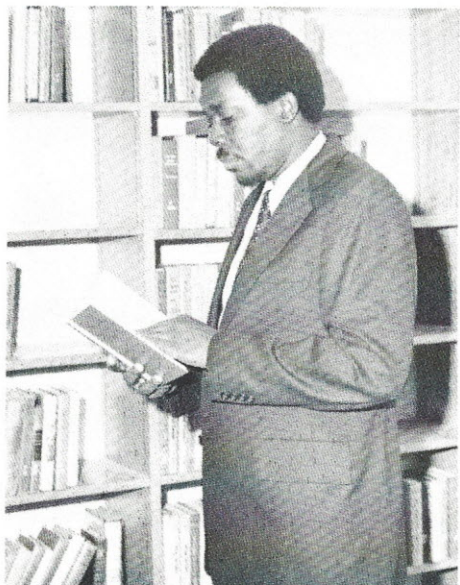


FACULTY HIGHLIGHTS



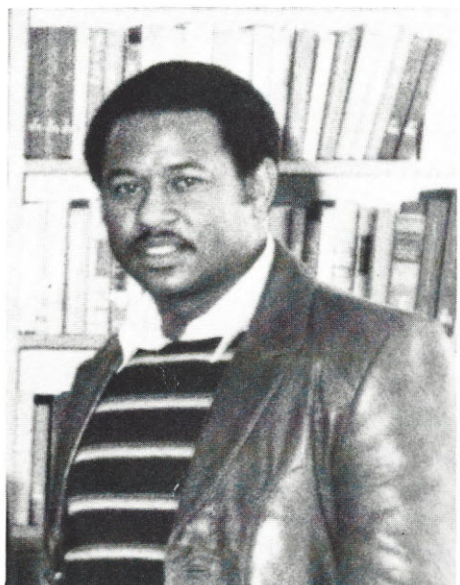
SINCLAIR SALTERS
M.A.T., University of South Carolina
Social Studies & Driver Education
Executive Committee.



ELIZABETH ANN SUTTON
B.S., Southern Illinois University
Science
Tenth Grade Adviser, and Science Club
Adviser.



FELICIA YOUNG TROWER
B.S., Benedict College
Business Education
FBLA Adviser, Student Government
Adviser, and Tenth Grade Adviser.



STEVE AARON WILSON
M.Ag.Ed., Clemson University
Agriculture
Student Government Chairperson, Student
Forum Adviser, FFA Adviser, Executive
Committee, and Refreshment Committee.



VICTORIA DRAGUN



MAMIE RABB YOUNG
B.A., Allen University
Social Studies
Eighth Grade Adviser, Junior National
Honor Club Adviser, School Advisory
Council, Athletics Committee, and Welfare
& Sympathy, Adv.