



Marian Douglas.

Best of luck  
always.  
Philip

You are a swell guy  
Ronnie

Luck, always,  
Frances

Luck to you  
Doris Barkman

Best of luck and happiness  
Dorinda  
Vellora

Luck to you  
Bob

You are very  
nice boy. Remember  
the days at Monticello  
Seabull Knight

We should had fun!  
Love  
Pat

Good luck always  
Bessie

you're one swell pal!  
Love U!  
Tommy

Best of luck,  
Pat  
Pat

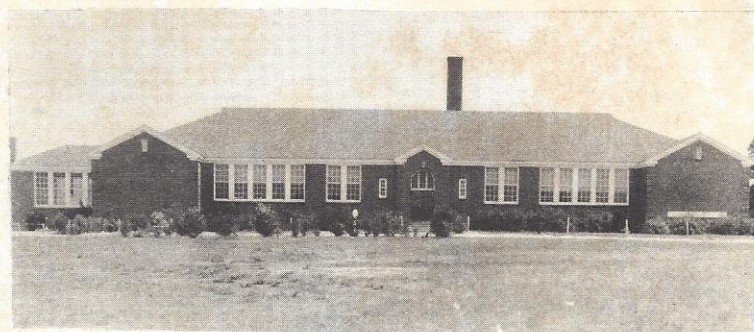
Best of luck always  
Doris Shover

Good luck to  
a swell guy.  
We had lots of fun  
Good times to father  
didn't we. Betty

Best of luck to  
a swell  
Martha guy.

Good to see you  
you next year. didn't you?  
had fun. Betty didn't you?

THE  
SENIOR CLASS  
OF  
MONTICELLO HIGH SCHOOL



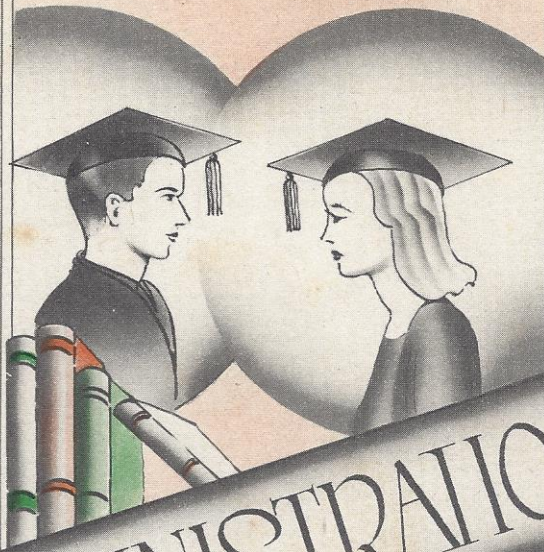
PRESENTS

**THE 1947  
BLUE & GOLD**



TO  
OUR  
FRIEND  
COUNSELOR  
SUPERINTENDENT  
MR. A. B. COOLEY  
THE SENIORS  
DEDICATE  
THE  
1947  
ANNUAL

# ADMINISTRATION



# T H E



J. W. WOOD  
Prin.-Math.



E. F. HOOVER  
Agriculture



A. B. COOLEY  
Superintendent



MRS. L. V. MAYER  
History



MRS. MYRTLE WILKES  
English

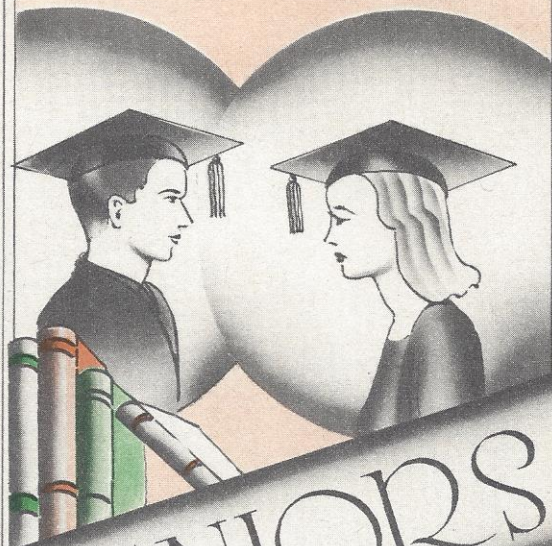


MISS CHRISTINE McMASTER  
Commercial



MRS. T. E. WHIP  
Science

# F A C U L T Y



# SENIORS





THE SENIOR CLASS OFFICERS

Ethel Cromer	President
Bobby Gregory	Vice-President
Essie Wilkes	Secretary
Blair Martin	Treasurer
Dewey Icard	Reporter





FRANK BOULWARE

"Frankie"...stubborn..conscientious worker  
biondie...sound thinker....prone to reason  
"it" out.

JEAN BURLEY

"Jeannie"..."beet-red" blushes..deep brown  
eyes...a happy laugh...well liked....plans  
to enter a business via commercial course.



BETTY CROMER

"Betsy"...cheerful...everybody's helper...  
good disposition....exceptionally neat....  
undecided about the future.

ETHEL CROMER

"Squeek"...plump...reliable....studious...  
dependable...rather quiet.....class pres-  
ident.





NANNIELENE CROMER

"Noots"....plump....peaches and cream complexion...retiring..pleasant smile..everything's always right.

MARY JULIA CLOWNEY

"Boots"....quiet but full of fun...sweet...friendly...agreeable...ambition: still uncertain.



BARNETTE GILLIAM

"Bonnie"....ivory tickler....attractive....tall and slender...always in a good humor. ambition: to be an artist and a nurse.

ROBERT LOUIS GREGORY

"Bobby"....bashful (except?)....eccentric love affair..."we just broke up"..dark and handsome...intellectual....ambition: to be a druggist.



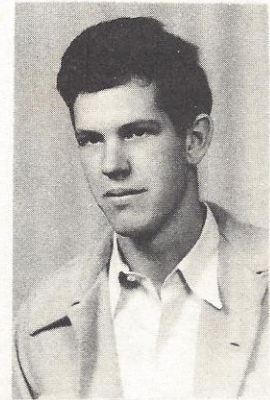


DEWEY ICARD, JR.

"Nooner"...sober?...old man...swing it....  
friendly brown eyes...good sport..what he'  
ll do in the future is still a mystery.

BLAIR MARTIN

Mixes well with boys....bashful with girls  
always says something when he speaks..con-  
scientious....cap'n....would like to spend  
his life fishing.



HAROLD PRICE

"Pete"....Ruth un-conscious...."A & P"....  
"Wanta buy an ad?"..well built..good look-  
ing.

CAROL RINGER

"Tad"...jokey...short and dark....baseball  
enthusiast...perfect example of good humor  
...ambition: to be president of this U. S.  
of America.



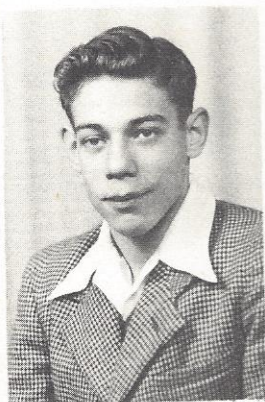


MADALYN STEPHENS

"Lynn"....popular.....excellent basketball player...genial personality..."Oh my goodness"....always neatly dressed..the perfect student.

JOHNNIE RUTH STEVENSON

"Johnnie"...basketball cap'n...all-state.. loves her man..."Hot dog"....laughing blue eyes.



CHESTER ARTHUR WEEKS

"Snookie"...witty...good sport..lady's man ...loves French?....an all round good fellow.....ambition: to sit on the river bank and fish.

ESSIE WILKES

"Becky"...quiet..."loves her John"..kind.. timid...intellectual...loyal.....always a friend to everyone.





A  
R  
T  
H  
U  
R  
W  
E  
E  
K  
S

M  
A  
D  
A  
L  
Y  
N  
S  
T  
E  
P  
H  
E  
N  
S

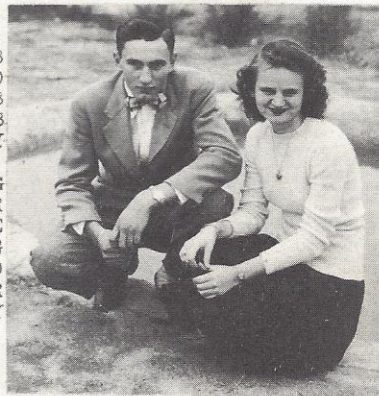
BEST ALL-ROUND



R  
U  
T  
H  
S  
T  
E  
V  
E  
N  
S  
O  
N

B  
L  
A  
I  
R  
M  
A  
R  
T  
I  
N

MOST ATHLETIC



B  
O  
B  
B  
Y  
G  
R  
E  
G  
O  
R  
Y

E  
S  
S  
I  
E  
W  
I  
L  
K  
E  
S

BEST INFORMED

Senior

Superlatives

MOST DEPENDABLE



R  
U  
T  
H  
S  
T  
E  
V  
E  
N  
S  
O  
N

P  
E  
T  
E  
P  
R  
I  
C  
E

MOST POPULAR



A  
R  
T  
H  
U  
R  
W  
E  
E  
K  
S

M  
A  
D  
A  
L  
Y  
N  
S  
T  
E  
P  
H  
E  
N  
S

# SENIOR STATISTICS

BURLEY, MARGIE JEAN----Glee Club, 1, 2, 3; President, 4H Club, 1, 2, 3, 4; J. H. A. 2, 3; Block M, 4; Basketball, 1, 3; Cheerleader 2; French Club, 4; Commercial Club, 3, 4; Panther Staff, 4; Associate Editor, 4; Band, 4.

BOULWARE, FRANK LESLIE---4H Club, 1, 2, 3, 4; Block M Club, 4; Basketball, 3, 4; Baseball, 4; Beta Club, 4; Commercial Club, 4; F. F. A., 2, 3, 4.

CLOWNEY, MARY JULIA-4H Club 1, 2, 3, 4; Basketball, 2, 3; J. H. A., 2, 3; Commercial Club, 3, 4; Panther Staff, 4.

CROMER, BETTY JEAN--Commercial Club, 3, 4; Panther Staff, 4; Glee Club, 2, 3; J. H. A., 2, 3.

CROMER, ETHEL ROBERTA----4H Club, 1, 2; J. H. A., 2; Beta Club, 3, 4, Secretary, 4; Commercial Club, 3, 4; Panther Staff, 4; Class-President, 4.

CROMER, NANNIELENE--4H Club 1, 2; J. H. A., 2; Glee Club, 2; Commercial Club, 3, 4; Panther Staff, 4.

GILLIAM, ANNIE BARNETTE--J. H. A. 2, 3; Commercial Club 3, 4; Panther Staff, 4; Glee Club, 2, 3.

GREGORY, ROBERT LOUIS-Class Vice-President, 3; Editor-in-Chief, BLUE AND GOLD, 4; Editor, Panther, 4; Basketball, 1, 2, 3, 4; Baseball, 1, 2, 3, 4; Captain, 4; Beta Club, 3, 4; Commercial Club 2, 3, 4; Block M, 4; Band, 4; Projector's Club, 4; Vice President, 4; Valedictorian.

ICARD, DEWEY JETHRO, JR.---Panther Staff, 4; Commercial Club, 3, 4; Baseball, 1, 2, 3; Block M, 4; F. F. A., 2, 3, 4; BLUE AND GOLD Staff, 4; Basketball, 1, 2, 3, 4; Captain, 4.

MARTIN, WILLIAM BLAIR--Panther Staff, 4; Commercial Club, 2, 3; Baseball, 1, 2, 3, 4; Basketball, 2, 3, 4; Captain, 4; Block M, 4; F. F. A., 2, 3, 4.

PRICE, HAROLD, JR.--Commercial Club, 3, 4; Panther Staff, 4; Advertising Manager, 4; Assistant Business Manager, BLUE AND GOLD, 4; F. F. A., 3; Block M, 4; Basketball, 3, 4; Baseball, 1, 2, 3, 4.

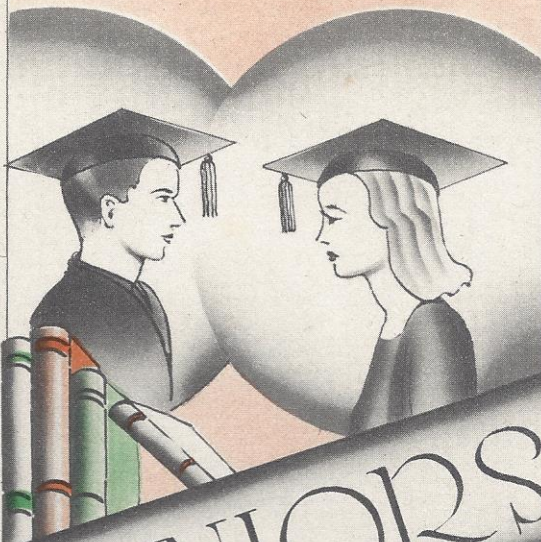
RINGER, ROBERT CAROL---Panther Staff, 4; Commercial Club, 3, 4; Baseball, 1, 2, 3, 4; Basketball Manager, 2, 3, 4; Block M, 4; F. F. A., 2, 3, 4.

STEPHENS, MADALYN ELIZABETH ---Transfer from Brookwood, Alabama, 4; Beta Club, 4; J. H. A., 3; Block M, 4; Secretary, 4; French Club, 4, President, 4; Commercial Club, 4; Circulation Manager, BLUE AND GOLD, 4; Panther Staff, 4; Basketball, 4.

STEVENSON, JOHNNIE RUTH----Basketball, 1, 2, 3, 4, Captain, 4; Block M, 4, President, 4; Glee Club, 1, 2, 3, 4; Sports Editor, Panther, 4; French Club, 4, Secretary, 4; Commercial Club, 3; BLUE AND GOLD Staff, 4.

WEEKS, CHESTER ARTHUR, JR.-Transfer from Holly Hill, 2; Baseball, 2, 3, 4; Basketball, 3, 4; Circulation Manager, Panther, 4; Commercial Club, 3; F. F. A. 2, 3; Block M, 4, Treasurer 4; Business Manager, BLUE AND GOLD, 4; French Club, 4, Treasurer, 4; Class Play, 3; Class Vice-President, 2.

WILKES, ESSIE MARIE-4H Club 1, 4, Vice-President, 2; Glee Club, 2; J. H. A., 2, 3; Beta Club, 3, 4, Treasure, 3, President, 4; Commercial Club, 3, 4; Panther Staff, 4, Society Editor, 4; Class Secretary, 4.



JUNIORS



# CLASS OFFICERS



## JUNIOR

Vallaree Faulkner	President
Clara Leagon	Vice-President
Frances Davis	Treasurer
Donald Traylor	Secretary



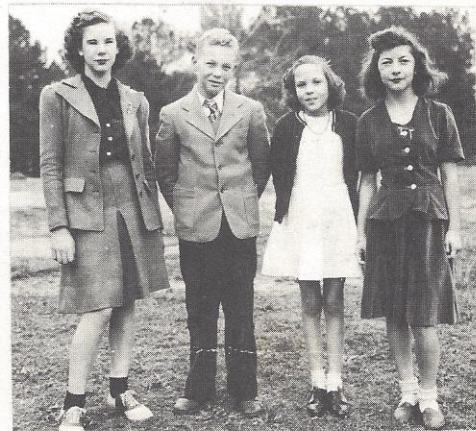
## SOPHOMORE

Isabel Wright	President
Marion Douglas	Vice-President
Bennie Tanner	Secretary
Emily Traylor	Treasurer



## EIGHTH

Florence Owens	President
Betty McDowell	Vice-President
Martha McMeekin	Secretary
Patricia Suber	Treasurer



## SEVENTH

Henrietta Rosson	President
Hayne McMeekin	Vice-President
Betty Ann Hood	Secretary
Virginia Davis	Treasurer



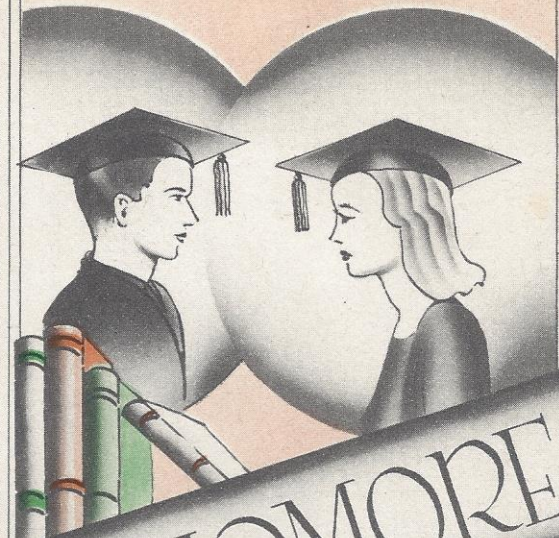


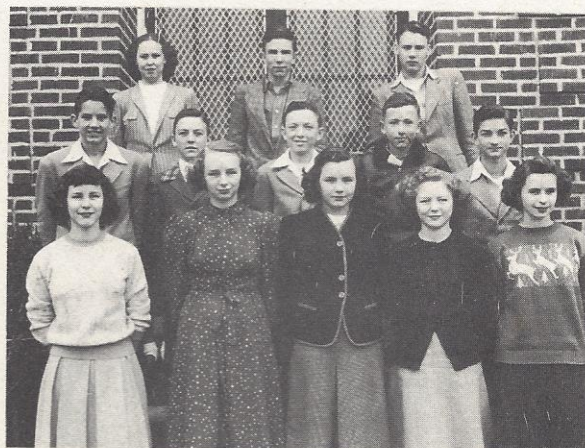
Troxel Berley  
Ernest Crawford, Jr.  
Vallaree Faulkner  
Dorothy Fuller  
Clara Leagon  
Hazeline Rawls  
Billy Shedd  
William Taylor  
Joel Turner

Doris Boulware  
Frances Davis  
Iris Florence  
James Fuller  
Wanda Price  
Irvin Robinson  
Luther Shuler  
Donald Traylor  
Nancy Wilkes

Bessie Wishert

SOPHOMORES



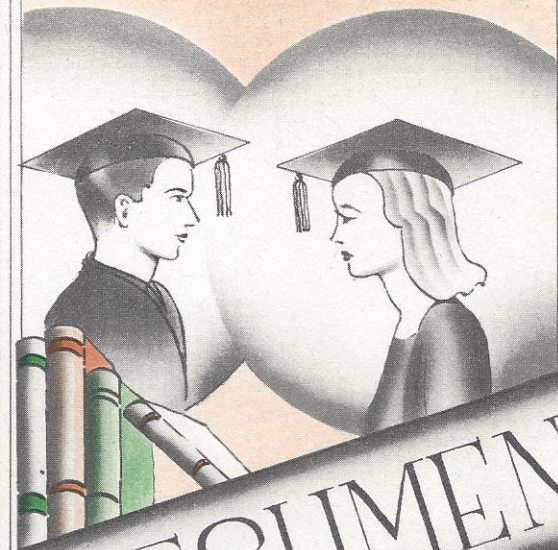


Patsy Blair  
Thomas Boulware  
Billy Clowney  
Doris Dickerson  
Marion Douglas  
Ronnie Johnston

Philip Lindler  
Wallace Martin  
Helen Stevenson  
Bennie Tanner  
Emily Traylor  
Isabel Wright

Kate Yongue

# FRESHMEN





EIGHTH GRADE

Betty Sue Davis  
Sybil Florence  
Betty McDowell  
Martha McMeekin  
Florence Owens  
Dorothy Parker  
Patricia Suber  
Louise Taylor

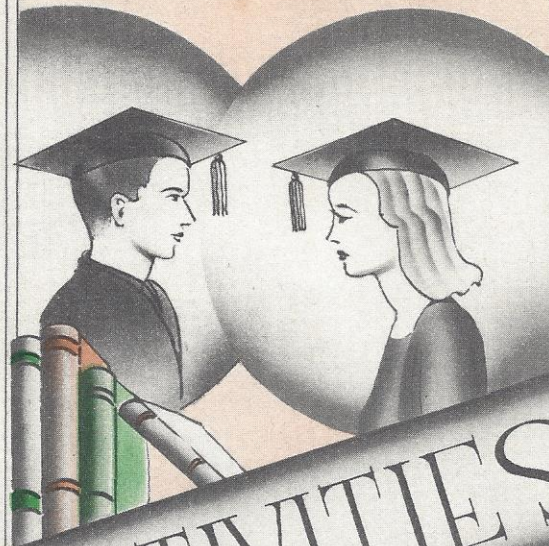
Betty Ruth Traylor  
Jeroline Wilson  
James Berry  
Larry Hunt  
Elridge McLandon  
Billy Tanner  
Fay Wilkes  
Olin Wilson



SEVENTH GRADE

Hillie Berley  
Gilda Cromer  
Grace Cromer  
Virginia Davis  
Ann Dickerson  
Mary Ann Douglas  
Raymond Feaster  
Joan Fee  
Thomas Fuller  
Thomas Gilliam

Betty Ann Hood  
Mack Lindler  
Hayne McMeekin  
Wayne Price  
Mitchell Rabb  
Gussie Reese  
Henrietta Rosson  
Josephine Shuler  
Lewis Turner  
Earl Wilkes



# ACTIVITIES



THE

# BLUE & GOLD



## THE STAFF

Editor-in-Chief

Assistant Editor-in-Chief

Business Manager

Assistant Business Manager

Circulation Manager

Assistant Circulation Manager

Sponsor

Sponsor

Sponsor

Bobby Gregory

Dewey Icard

Pete Price

Arthur Weeks

Madalyn Stephens

Ruth Stevenson

Mrs. L. V. Mayer

Miss Christine McMaster

J. W. Wood



# THE PANTHER



"Member, South Carolina Scholastic Press Association"

## THE STAFF

Editor	Bobby Gregory
Assistant Editor	Jean Burley
Society Editor	Essie Wilkes
Advertising Manager	Pete Price
Feature Editor	Dewey Icard
Sports Editor	Ruth Stevenson
Circulation Manager	Arthur Weeks
Alumni Editor	Mary Julia Clowney
Reporters: Betty Cromer, Lthel Cromer, Nannielene Cromer, Frank Boulware, Carol Ringer, Barnette Gilliam, Blair Martin.	
Sponsor	Miss Christine McMaster

BETA CLUB

Essie Wilkes            President  
Billy Shedd        Vice-President  
Ethel Cromer        Secretary  
Clara Leagon        Treasurer  
Mrs. L. V. Mayer    Sponsor

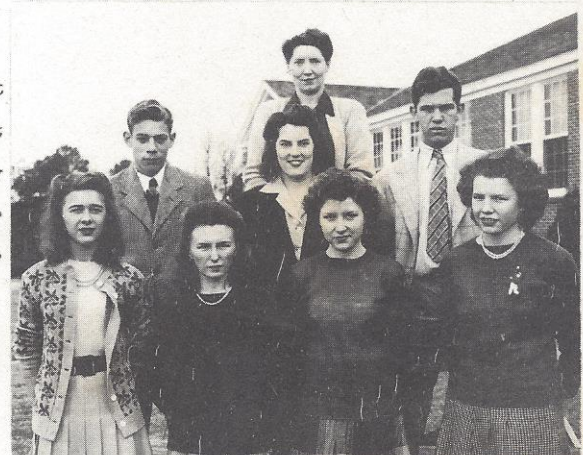


COMMERCIAL CLUB

Madalyn Stephens        President  
Billy Shedd            Vice-President  
Donald Traylor        Sec.-Tres.  
Miss Christine McMaster    Sponsor

FRENCH CLUB

Madalyn Stephens        President  
Blair Martin            Vice-President  
Arthur Weeks            Secretary  
Ruth Stevenson        Treasurer  
Mrs. L. V. Mayer        Sponsor



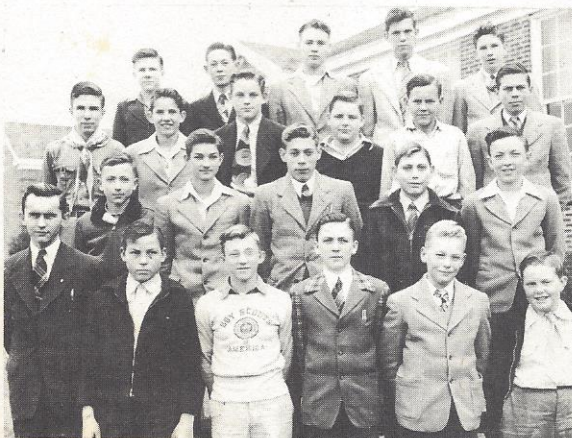


BLOCK "M" CLUB

Ruth Stevenson	President
Blair Martin	Vice-President
Madalyn Stephens	Secretary
"Snookie" Weeks	Treasurer

OPERATOR'S CLUB

Irvin Robinson	President
Bobby Gregory	Vice-President
Billy Shedd	Secretary
Harrietta Rosson	Reporter



BOY SCOUTS

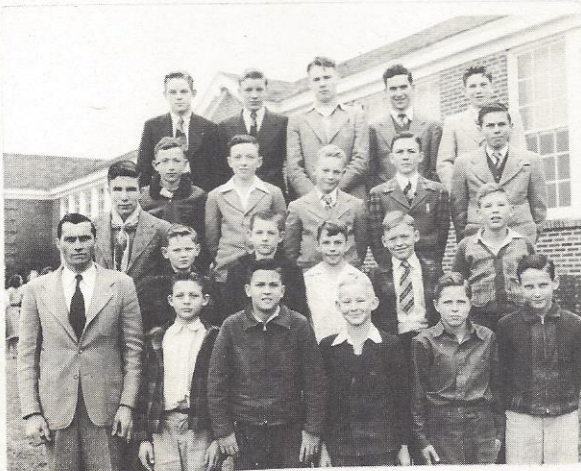
Marion Douglas Sr.	Patrol Leader
"Snookie" Weeks	Patrol Leader
Bennie Tanner	Patrol Leader
Billy Tanner	Patrol Leader
J. W. Wood	Scoutmaster

HEART

HEAD

4

Clara Leagon	President
Patsy Blair	Vice-President
Martha McMeekin	Secretary
Betty McDowell	Reporter
Mrs. T. E. Weir	Sponsor



H

Robinson	President
Shedd	Vice-President
Crawford	Secretary
McMeekin	Reporter
F. Hoover	Sponsor

HEALTH

HANDS

# J. H. A.

Frances Davis            President  
Iris Florence        Vice-President  
Vallaree Faulkner    Secretary  
Emily Traylor        Treasurer  
Mrs. T. E. Weir        Sponsor



# F. F. A.

Dewey Icard            President  
Carol Ringer        Vice-President  
Irvin Robinson        Secretary  
Ernest Crawford      Treasurer  
Billy Shedd            Reporter  
E. F. Hoover            Sponsor



BAND

MUSIC  
CLUB





LUNCH  
ROOM



CHEFS



BUS  
DRIVERS



"Cindy"



"Babe" Johnston



Clarence

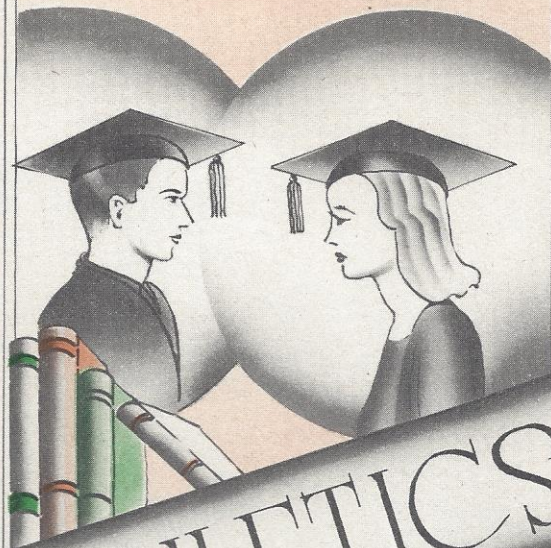


School is out



Going home





# ATHLETICS





BOY'S BASKETBALL

Blair Martin, Co-Capt.

Dewey Icard, Co-Capt.

Bobby Gregory

Billy Shedd

Arthur Weeks

Irvin Robinson

Philip Lindler

Frank Boulware

Luther Shuler

Ernest Crawford

Pete Price

Carol Ringer                      Manager

Betty McDowell              Cheerleader

Ronnie Johnston              Cheerleader

J. W. Wood                      Coach



GIRL'S BASKETBALL

Forwards:

Vallaree Faulkner  
 Emily Traylor  
 Frances Davis  
 Patsy Blair  
 Betty Ruth Traylor  
 Patricia Suber  
 Sybil Florence

Guards:

Ruth Stevenson, Capt.  
 Madalyn Stephens  
 Doris Bouliware  
 Isabel Wright  
 Helen Stevenson  
 Wanda Price

Martha McMeekin      Manager  
 Clara Leagon      Cheerleader  
 Donald Traylor      Cheerleader  
 Christine McMaster      Coach



THE BASEBALL TEAM

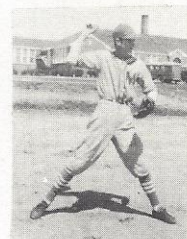
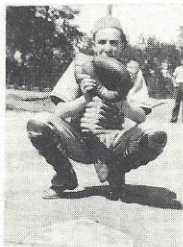
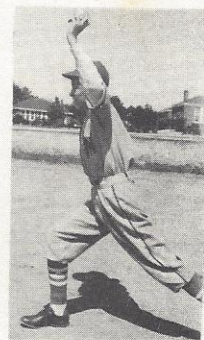
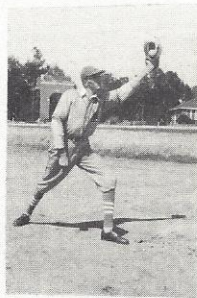
Varsity

Bobby Gregory  
 Elair Martin  
 Billy Sheed  
 Snookie Weeks  
 Pete Price  
 Carol Ringer  
 Ernest Crawford  
 Donald Traylor  
 Bennie Tanner  
 Irvin Robinson  
 Philip Lindler  
 Ronnie Johnston

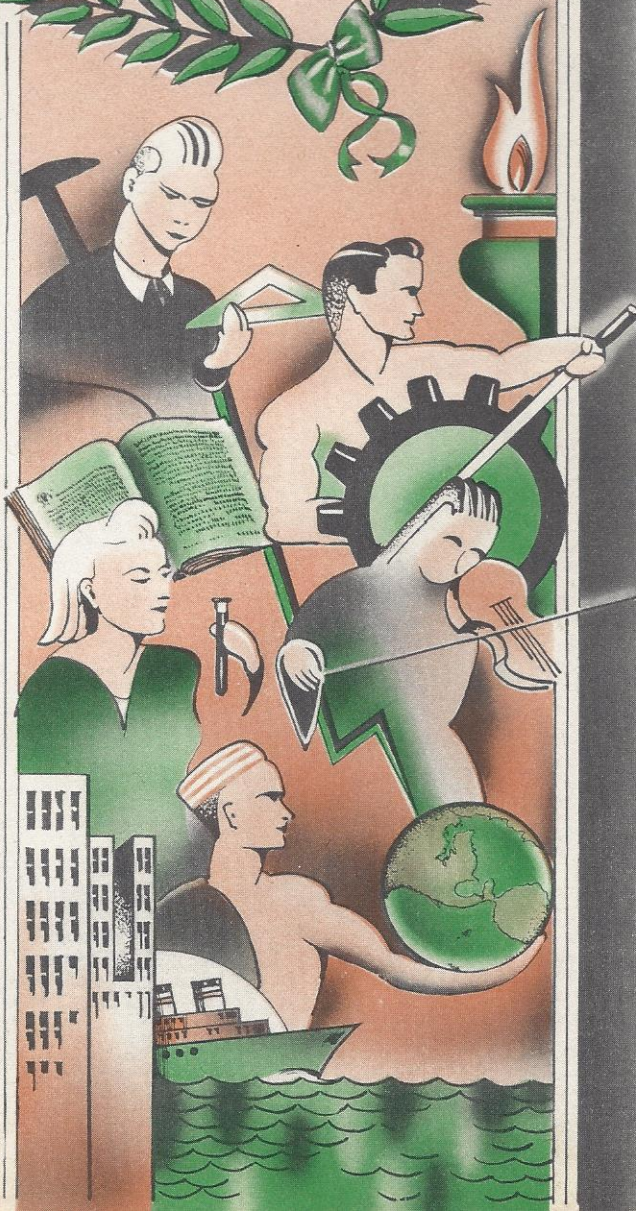
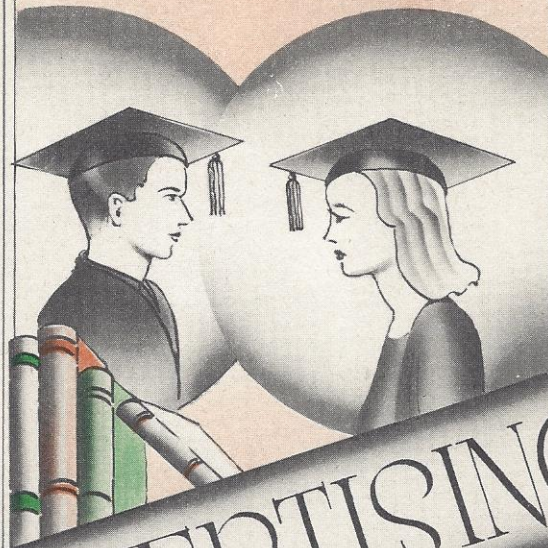
1b, Captain  
 2b  
 3b  
 ss  
 lf  
 cf  
 rf  
 c  
 c  
 p  
 p

Other Players

Frank Bouliware  
 Thomas Bouliware  
 Marion Douglas  
 James Fuller  
 Wallace Martin  
 Eldridge McLandon  
 Billy Tanner  
 William Taylor  
 Joel Turner  
 Olin Wilson



# ADVERTISING



**SHIVAR SPRINGS, Inc.**

*Shelton, S. C.*



**LIME COLA**



**GINGER ALE**

**"76"**

**BURLEY'S SERVICE STATION**



*Monticello, S. C.*

---

*Compliments of*

**SPARTAN GRAIN & MILL CO.**

*Newberry, S. C.*

*A. J. Briggs, Jr., Representative*

---

**SEARS ROEBUCK**

**BRANCH STORE**



*Newberry, S. C.*

---

*Compliments of*

**J. B. HAGER**

**THOMAS ESSO STATION**

*Winnsboro, S. C.*



**WINNSBORO'S MOST MODERN  
ONLY AAA STATION**

---

**NICHOLS STUDIO**



*Photographs For The Blue and Gold*



*Portraits — Commercial — Kodak Finishing  
Picture Frames — Copying — Enlarging*

---

**DesPORTES SUPER MARKET**

*Fancy Groceries — Best of Fresh Meats*  
PHONE 325

*Feedstuff — Hay — Farm Implements*  
PHONE 347

*The One Stop Store*

---

**FAIRFIELD MOTOR PARTS, Inc.**

*Winnsboro, S. C.*

*Nationally Advertised Auto Parts and Accessories*

*Tires — Tubes — Batteries*



**BRABHAM RADIO**  
**Sales and Service**

Winnsboro, S. C.

**Winnsboro Furniture**  
**Company**

Winnsboro, S. C.

**RITZ CAFE**

WINNSBORO, S. C.  
Home of Good Food  
No Alcoholic Beverages Permitted  
HAROLD DOUGLAS, JR.,  
—And—  
HAPPY McLENDON, Owners

**Farmers Exchange**

Winnsboro, S. C.

Compliments

—OF—

**Charlie Norman**

Winnsboro, S. C.

**Lyles and Lyles**

Winnsboro, S. C.

**Haynes' Shoe Shop**

Winnsboro, S. C.

**Ketchin Mercantile**  
**Company**

Winnsboro, S. C.

*COMPLIMENTS OF*  
**FAIRFIELD OIL CO.**



*"THAT GOOD GULF GASOLINE"*

---

*COMPLIMENTS OF*  
**WINNSBORO CHEVROLET CO.**

---

**BEST WISHES**

— *From* —

**McMASTER and**  
**THE COLONIAL DRUGS**

**J. W. LADD**  
*"The Store of Better  
Values"*

Strother, S. C.

Compliments of  
**B. C. MOORE &  
SONS, Inc.**  
*Ready-to-Wear - Shoes  
Dry Goods*

Winnsboro, S. C.

**MERCHANTS &  
PLANTERS BANK**

Winnsboro, S. C.

**Smith's Cut-Rate  
Drug Store**

*Quality Drugs  
Lowest Prices*

**PROPST'S**

Winnsboro, S. C.

Compliments of

**A. B. COOLEY**

**T. ROY SUMMER**  
*Men's Wear - Boys' Wear  
Hats and Shoes*

Newberry, S. C.

Compliments of  
**G. B. Summer & Sons**

Newberry, S. C.



DEMAND MORE THAN PRICE IN YOUR  
CAP AND GOWN

*Sample gladly sent upon request*

---

Address

CAPS *and* GOWNS

615 Wyandotte  
Kansas City

# SENIORS of 1947

## Do You Know

that you can purchase a very appropriate gift for your school—a gift that will perpetuate the memory of the class of '47 for as little as \$3.60?

## Our "School Gift Service"

catalog contains pictures and full descriptions with prices on more than 300 items which have been selected for their suitability as class gifts and which you can purchase at a saving at prices ranging from \$1.50 up.

## Write for Free Catalog Today

You will be pleased with the up-to-date suggestions offered thru this service.



### SCHOOL GIFT SERVICE

4925 GLENDALE

KANSAS CITY

