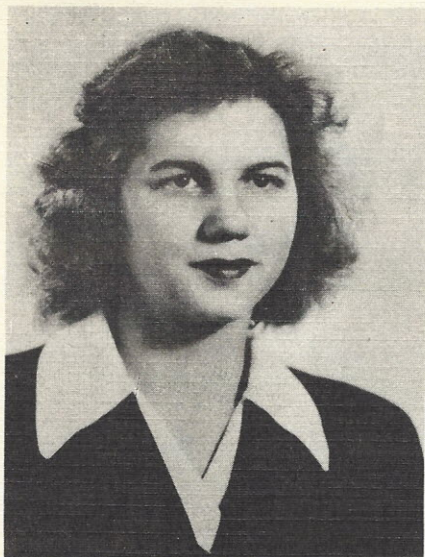


SENIORS



IRIS LEE FLORENCE
 "Always laughter, never sad,
 Sometimes naughty, but never
 bad."

Band 3, 4; Basketball 1, 2, 3, 4;
 "Panther" 3, 4; Circulation Man-
 ager 4; Beta Club 2, 3, 4; Class
 President 4; 4-H Club 1, 2, 3, 4;
 Class Play 2, 3, 4; Glee Club 2, 4;
 Editor in Chief of "Blue and Gold"
 4; J. H. A. 1; Block "M" 3.



VALLAREE FAULKNER
 "Ree Ree"

"A good sport always plays the
 game,
 No matter what happens she'll
 be the same."

Basketball 1, 2, 3, 4; Captain
 3, 4; Beta Club 2, 3, 4; President
 3, 4; Class Plays 2, 3, 4; Glee Club
 1, 2, 3, 4; Editor in Chief "Panther"
 3; Assistant Editor 4; Circulation
 Manager "Blue and Gold" 4; Stu-
 dent Council 4; Secretary 4; 4-H
 Club 1, 2; All District Basketball
 3, 4; Class President 1, 2; Miss Hi-
 Miss 4; Citizenship Medal 3; J. H.
 A. 1, 4.

JAMES FULLER
 "Jimmie"

"A pleasant companion for all"
 Band 2, 3, 4; 4-H Club 1, 2, 3;
 Typist "Blue and Gold" 4; Beta
 Club 2, 3; Class Play 2, 4.

4.

RUTH McCLINTOCK
 "Ruthie"

"Happy am I; from cares I'm free!
 Why aren't they all contented like
 me?"

Mt. Zion 1, 2; Class President 3;
 Secretary 4; Beta Club 4; Class Play
 4; Homecoming Queen 4; Glee
 Club 3, 4; 4-H Club 3, 4; Vice
 President 4; Cheerleader 4; Panther
 3, 4; Business Manager 4; Typist
 "Blue and Gold" 4; Citizenship
 Award 4; J. H. A. 4.

