

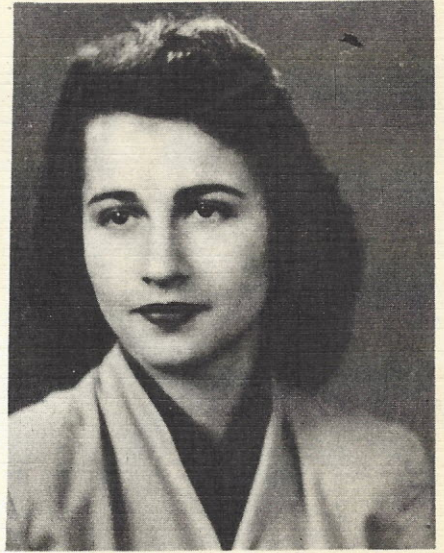
SENIORS

IRIS WANDA PRICE

"Tank"

"A glad heart maketh a cheerful countenance."

Beta Club 2, 3, 4; 4-H Club 1, 2; Glee Club 1, 2, 3, 4; The Panther 3, 4; Typist Blue and Gold 4; Class Plays 2, 3, 4; and J. H. A. 1.



HAZELINE RAWLS

"Baby"

"She's little, she's cute, she's spry, And there's mischief in her eyes."

Beta Club 3, 4; Glee Club 1, 2, 3, 4; "Panther" 3, 4; Assistant Circulation Manager "Blue and Gold" 4; 4-H Club 1, 2, 3, 4; Class Play 4; Music Club 4; J. H. A. 1.

LUTHER LEE SHULER

"Red"

"Once you have known him you will never forget him."

Basketball 2, 3, 4; F. F. A. 1, 2; Class Play 4; Assistant Business Manager of Blue and Gold 4; and Block M Club 3.

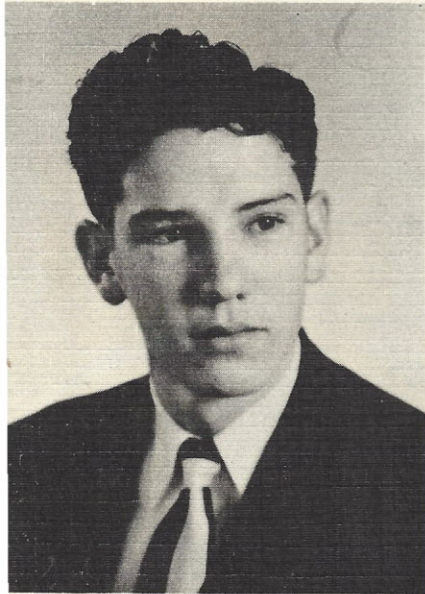


WILLOUGHBY B. SHEDD

"Billy"

"A good character is worth more than power or gold."

Student Council 4; President 4; Basketball 1, 2, 3, 4; Captain 4; Co-captain 3; Beta Club 2, 3, 4; Vice President 2; Secretary 3, 4; Band 2, 3, 4; Bus Driver 4; Class Play 2, 3, 4; "The Panther" 3, 4; Editor 4; Assistant Editor 3; Assistant Editor "Blue and Gold" 4; Class Vice President 1, 3, 4; 4-H Club 1, 2, 3, 4; President 4; Vice President 2, 3; F. F. A. 1, 2, 3.



*Well, Lsh, we have
d some Sweet
ies together haven't
? Wish I could
here next year, too!
tak after bills' ole
abell for me!
xks for everything-
5/18/49 a pal,
H. H.*