

TSY BLAIR

Basketball 1,2,3,4; Class Play 2,3,4; Homecoming
Men Attendant 4; Glee Club 1,2,3,4; Vice-Pres.
President 4; 4-H Club 1,2,3,4; Vice Pres. 2,
President 3; Class Secretary 2; Beta Club 2,3,4,
Treasurer 3, President 4; Band 2,3; Future
Teachers 3, Vice-Pres. 3; Editor of "The Panther"
Most Popular, Best All Around, Friendliest 4;
Student Council 3, Vice-Pres 3; Class President 3.

ELLY CLOWNEY

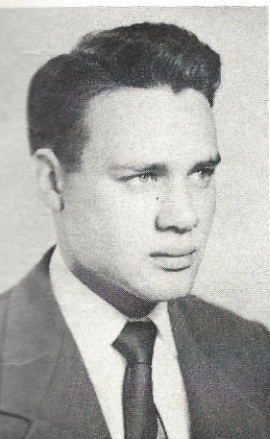
F.A. 1,2; 4-H Club 1,2,3,4; Class Play 2; Beta
Club 2,3,4.



DORIS DICKERSON

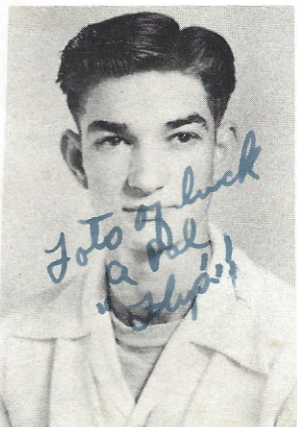
Band 1,2,3; Glee Club 1,2,3,4; 4-H Club 1,2,3,4;
J.H.A. 4; Class Play 2.

*Sweet
Pat
Pat*



MARION DOUGLAS

Band 1,2,3,4; Beta Club 2; 4-H Club 1,2,3,4;
President 2,4; Vice-President 3; Secretary 1;
Mixed Chorus 4; Class Play 2,4; F.F.A. 2;
"Panther" Bus. Mgr. 4; "Blue & Gold" Asst.
Bus. Mgr. 4; Class Vice-Pres. 2; Most De-
pendable, Neatest, Friendliest, Most Popular 4.



DOROTHY FULLER

4-H Club 1; Class Play 2; Glee Club 1,3,4;
"The Panther" Typist 4; J.H.A. 1,3; "Blue
& Gold" Typist 4.

PHILIP LINDLER

Basketball 1,2,3,4; Co-Capt. 3; Captain 4; All
Star Team 4; All District 3,4; Baseball 1,2,3,4;
Captain 3; Class Play 2,3,4; "Blue & Gold"
Bus. Mgr. 4; Most Athletic, Best All Around 4;
"Who's Who" 4.