



The Blue and Gold '50





SCHOOL
ZONE

THE
“BLUE AND GOLD”

of
1950

Published By
The Senior Class

of
Monticello High School
Strother, South Carolina



Standing, left to right: Mr. Tom Traylor, Mr. C. H. Ragsdale, Mr. R. H. Long.
Seated: Mr. A. H. McMeekin, Mr. W. B. McDowell.
Not Present: Mr. G. E. Yongue, Mr. J. B. Goodlet.

Dedication

TO OUR LOYAL FRIENDS,
OUR MOST COMPETENT TRUSTEES,
WHO HELPED MAKE IT POSSIBLE
FOR US TO GRADUATE,
WE, THE SENIORS OF 1950,
DEDICATE THIS ANNUAL.

FACULTY



B

Faculty



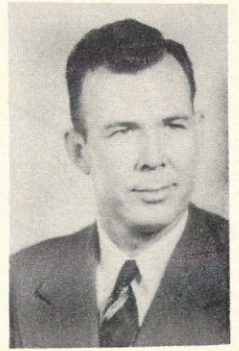
*Best wishes +
Luck to you always*

NORRIS



A. B. COOLEY, SUPT.

A. B. Cooley



WATSON



COOLEY



*Very best wishes
to you and luck
in the year ahead
D. Jones*

JONES



MELTON

*Best of luck to you
from H. B. B. B. B.*



STEELE

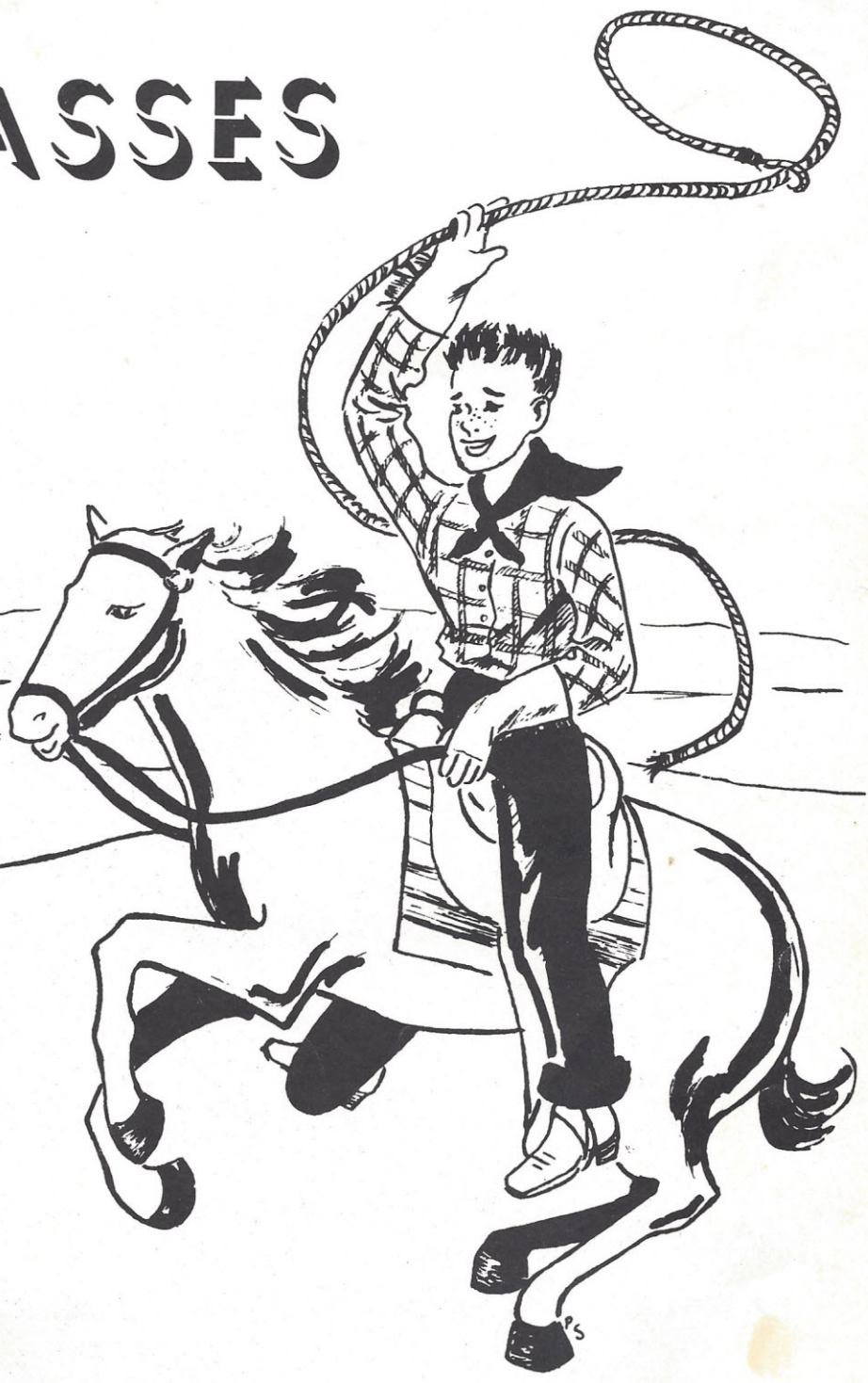
Kittie Lee Steele



UPTON

*Best wishes
Ann W.*

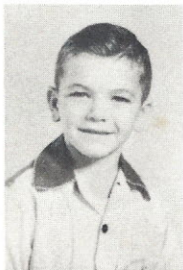
CLASSES



Seniors



President.....Isabelle Wright
Vice-President.....Emily Traylor
Secretary.....Kate Youngue
Treasurer.....Ray Price



EDDY ROBINSON

MASCOTS



MARY JO BURLEY

TSY BLAIR

Basketball 1,2,3,4; Class Play 2,3,4; Homecoming
Men Attendant 4; Glee Club 1,2,3,4; Vice-Pres.
President 4; 4-H Club 1,2,3,4; Vice Pres. 2,
President 3; Class Secretary 2; Beta Club 2,3,4,
Treasurer 3, President 4; Band 2,3; Future
Teachers 3, Vice-Pres. 3; Editor of "The Panther"
Most Popular, Best All Around, Friendliest 4;
Student Council 3, Vice-Pres 3; Class President 3.

ELLY CLOWNEY

F.A. 1,2; 4-H Club 1,2,3,4; Class Play 2; Beta
Club 2,3,4.



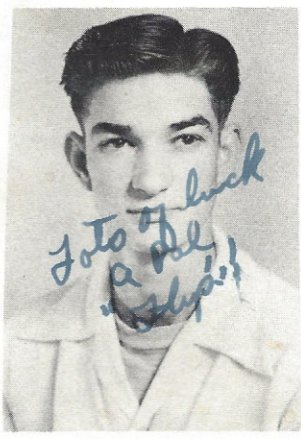
DORIS DICKERSON

Band 1,2,3; Glee Club 1,2,3,4; 4-H Club 1,2,3,4;
J.H.A. 4; Class Play 2.



MARION DOUGLAS

Band 1,2,3,4; Beta Club 2; 4-H Club 1,2,3,4;
President 2,4; Vice-President 3; Secretary 1;
Mixed Chorus 4; Class Play 2,4; F.F.A. 2;
"Panther" Bus. Mgr. 4; "Blue & Gold" Asst.
Bus. Mgr. 4; Class Vice-Pres. 2; Most De-
pendable, Neatest, Friendliest, Most Popular 4.



DOROTHY FULLER

4-H Club 1; Class Play 2; Glee Club 1,3,4;
"The Panther" Typist 4; J.H.A. 1,3; "Blue
& Gold" Typist 4.

PHILIP LINDLER

Basketball 1,2,3,4; Co-Capt. 3; Captain 4; All
Star Team 4; All District 3,4; Baseball 1,2,3,4;
Captain 3; Class Play 2,3,4; "Blue & Gold"
Bus. Mgr. 4; Most Athletic, Best All Around 4;
"Who's Who" 4.



WALLACE MARTIN

Class Play 2, 3, 4; Basketball 1, 2, 3, 4; Baseball 1, 2, 3, 4; Class Treasurer 3; Class Pres. 2; F. F. A. 1; Exchange Editor "The Panther" 4; "Blue and Gold" Editor 4; Best looking 4.

BETTY McDOWELL

Class President 1; 4-H Club 1, 3, 4; President 1; Beta Club 3, 4; Band 1, 3, 4; Sports' Editor "The Panther" 4; Sports' Editor "Blue & Gold" 4; Glee Club 1, 3, 4; Secretary 3; Future Teachers' Club 3; Class Play 3, 4; Basketball 3; Cheerleader 1; "Miss Hi Miss" 4; Most Intellectual, Most Dependable 4; J. H. A. 1, 3; Mixed Chorus 4; Who's Who 4; Student Council 3, 4; Pres. 4.



RAY PRICE

Ellenton High School 1; Beaufort High School 2; F. F. A. Delegate Kansas City 3; F. F. A. 3; Beta Club 3, 4; Future Teachers 3; Pres. 3; Class Play 3, 4; Class Treasurer 4; Student Council 4; Secretary 4; "Panther" Circulation Mgr. 4; Band 4; Mixed Chorus 4; Most Intellectual, Wittiest 4.

HELEN STEVENSON

Glee Club 1, 2, 3, 4; 4-H Club 1, 2, 3, 4; Secretary 4; Beta Club 4; J. H. A. 4; Basketball 1, 2, 3, 4; Class Play 2, 4; "Panther" Typist and Reporter 4; Wittiest 4.

Bank to back to you, Helen will miss you later love Helen 4/2

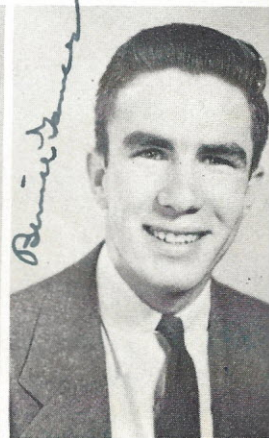


PAT SUBER

Basketball 1, 2, 4; Beta Club 2, 4; Band 1, 2, 4; Class Play 2, 3, 4; "Panther" Reporter 2, 4; "Blue and Gold" Assistant Editor 4; Glee Club 1, 2, 4; 4-H Club 1, 2, 4; Secretary 1; Class Secretary 1, 2; Class Treasurer 2; J. H. A. 1.

BENNIE TANNER

Basketball 3, 4; All Star Team 4; Baseball 1, 2, 3, 4; Class Play 2; F. F. A. 1, 2; 4-H Club 1, 2; "Blue and Gold" Circulation Manager 4.



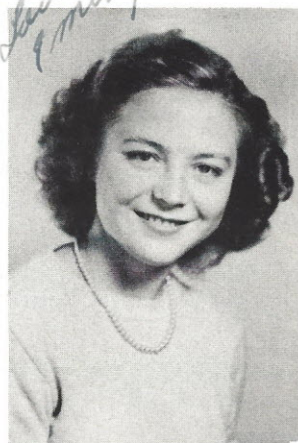
Love & luck always Pat 1/1

EMILY TRAYLOR

Basketball 1,2,3,4; Co-Captain 3; Captain 4; All District Team 3; All Star Team 4; Class Play 3; Homecoming Attendant 3; Glee Club 1,2,3,4; Vice President 4; 4-H Club 1,2,3,4; President of J.H.A., Treasurer 4; Class Treasurer 2; Secretary 3; Vice President 4; "The Panther", Feature Editor 4; "Blue and Gold" Snapshot Editor 4; Most Athletic, Prettiest 4.

Best of luck Emily

Wish me luck Miss Emily



SABELLE WRIGHT

Class President 1,4; Class Vice-President 3; 4-H Club 1,2,3,4; Beta Club 2,3,4; Treasurer 2; Vice President 3; Secretary 4; Band 1,2,3,4; News Editor "Panther" 4; Glee Club 1,2,3,4; Treasurer 3; Secretary 4; Future Teachers' Club 3; Class Play 2,3,4; Basketball 1,2,3,4; "Neatest" 4; DAR Citizen 4; J.H.A. 4; Mixed Chorus 4.



KATE YONGUE

Band 1,2,3; Beta Club 2,3,4; 4-H Club 1,2,3,4; Glee Club 1,2,3,4; J.H.A. 4; F.T.A. 3; Reporter "The Panther" 4; Club Editor "The Blue and Gold" 4; Class Play 2,3,4; Class Secretary 4; Treasurer Glee Club 4; Mixed Chorus 4.

Remember me Kate Yongue

Alma Mater

Hail to thee our Alma Mater
Where our thoughts will lie,
We shall ever love and cherish
All our precepts high.
Fond the memories that cluster
Round our dear school halls.
Naught shall ever dim the luster
That thy name recalls.

Refrain

Monticello sing we ever
Loud thy praises tell
Hail to thee our Alma Mater
Hail all Hail to thee.

Juniors



OFFICERS

President.....Martha McMeekin
Vice-President.....Florence Owens
Secretary.....Eldridge McLendon
Treasurer.....Sybil Florence

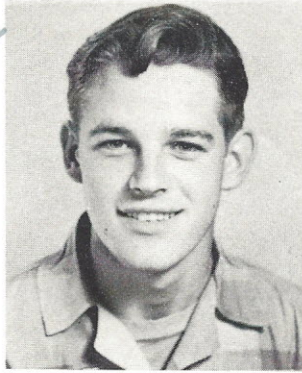


Martha McMeekin
MARTHA McMEEKIN

JAMES BERRY

SYBIL FLORENCE

*Best wishes
to a nice
girl
J.N.B.*



*Love,
Henrietta*

ELDRIDGE McLENDON

FLORENCE OWENS

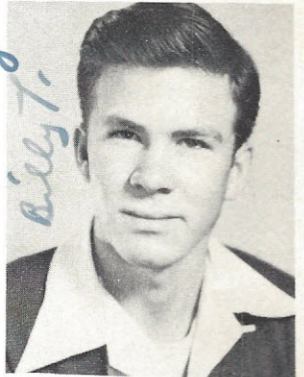
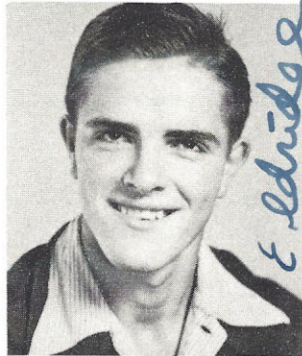


*Love you
Sybil*

*Best wishes,
Dollie*

DOROTHY ANN PARKER

HENRIETTA RÖSSON



Eldridge

Billy T.

DOLLIE SMITH

BILLY TANNER

Best of luck always!



*Love,
Blair*

Billy Tanner

BETTY RUTH TRAYLOR

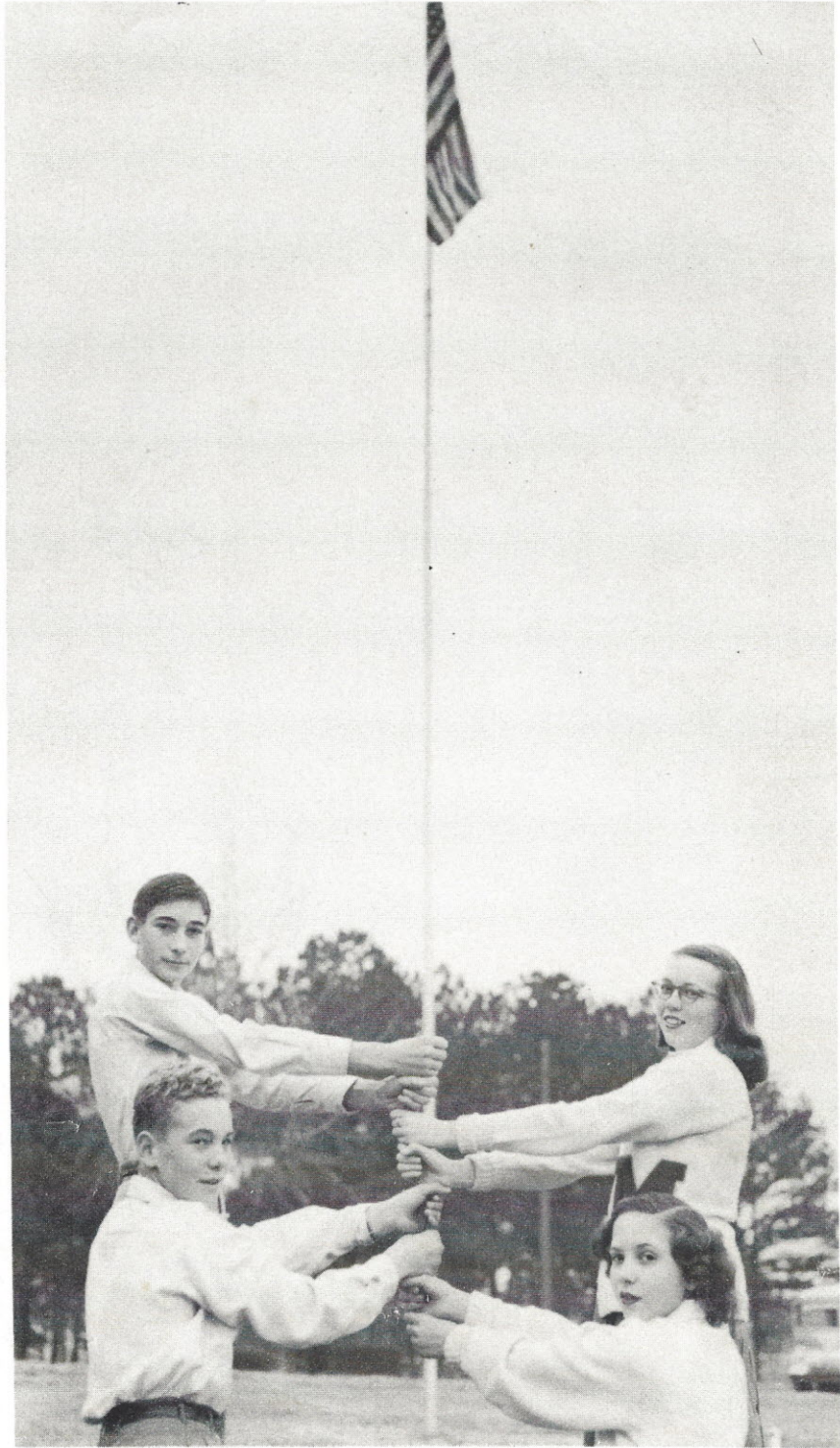
JEROLINE WILSON



*Love
Dollie*

*Love
Jeroline*

Sophomores



President.....Hayne McMeekin
Vice-President.....Mack Lindler
Secretary.....Betty Hood
Treasurer.....Marianne Douglas

BILLY BERLEY

Billy Berley



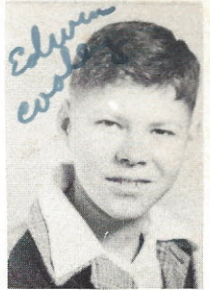
CAROL COOLEY

*Classmate
Carol*



EDITH COOLEY

*Edwin
Cooley*



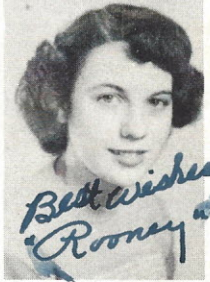
GILDA CROMER



GRACE CROMER



ANN DICKERSON

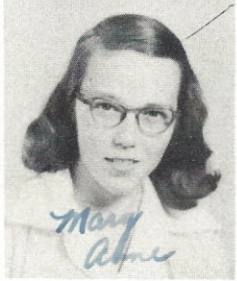


*Love,
Gilda*

*Love,
Grace*

*Best wishes
Rooney*

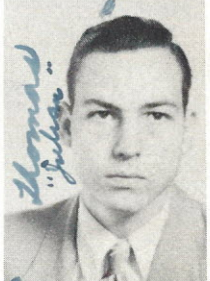
MARY ANN DOUGLAS



JOAN FEE



THOMAS FULLER

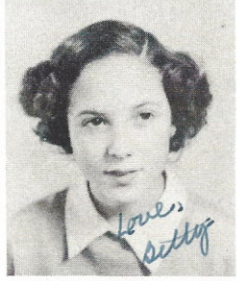


*Mary
Anne*

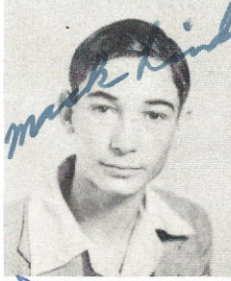
*Love,
Joan*

*Thomas
Fuller*

BETTY ANN HOOD



MACK LINDLER



HAYNE McMEEKIN

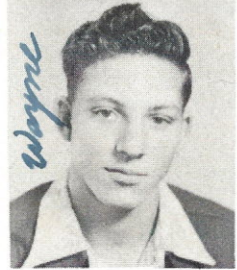


*Love,
Betty*

Mack Lindler

*Best of luck
to a cute gal. M. Name
Roy*

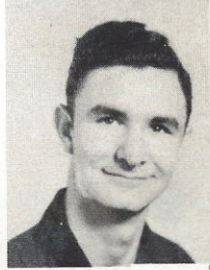
WAYNE PRICE



MITCHELL RABB



ROY SANE



Wayne

Mitchell

LEWIS TURNER

*an old
friend
Lewis*



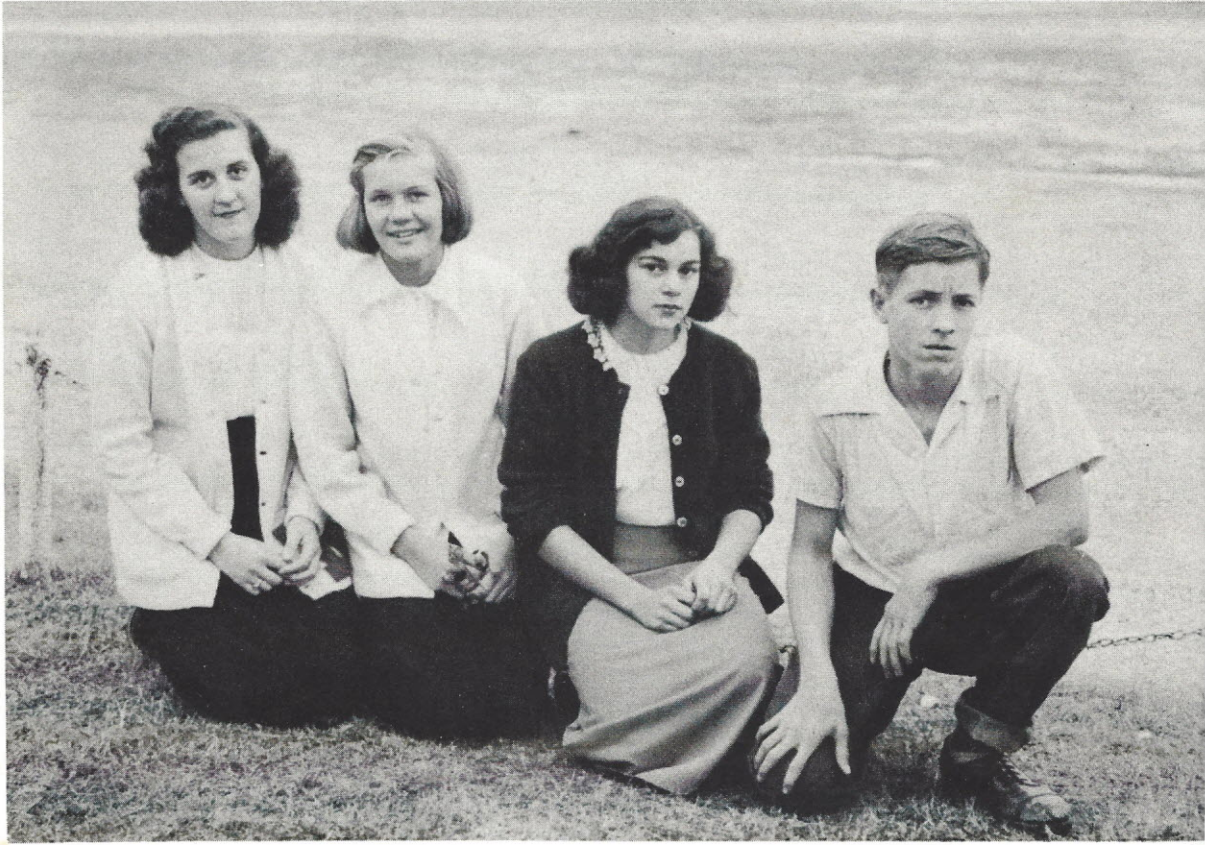
EARL WILKES



Earl Wilkes

Love Jr. A.

Freshmen

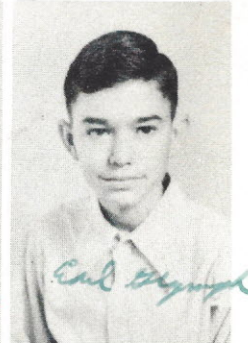
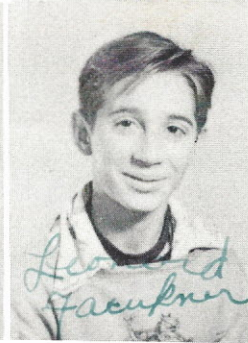


President.....Shirley Brown
Vice-President.....Margaret Parker
Secretary.....Caroline Miller
Treasurer.....Charles McLendon

SERLEY BROWN

LEONARD FAULKNER

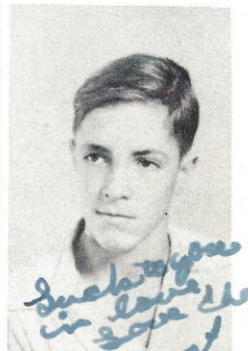
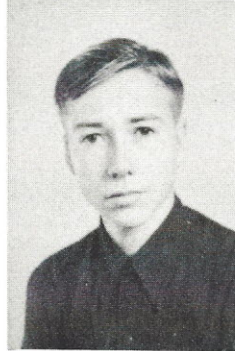
EARL GLYMPH



JAMES HOOD

CAROLINE MILLER

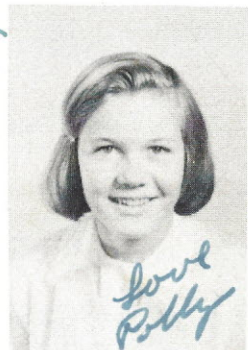
CHARLES McLENDON



JOHN OWENS

MARGARET PARKER

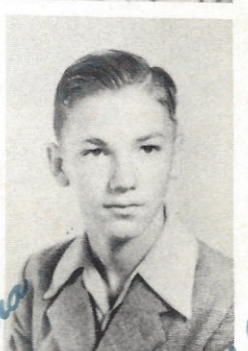
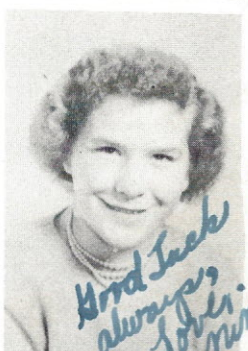
SHIRLEY SANE



BETTY JO SHIRLEY

NINA STEVENSON

HORACE STEWART



BETTY JO WIDNER



Eighth Grade

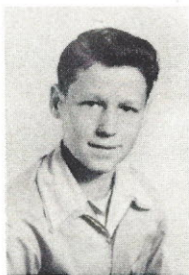


Front row, left to right: F. Tanner, P. Ragsdale, J. Tanner, L. Blair, J. Wilson, S. Doolittle, W. Traylor, S. Berley, R. Rawls.

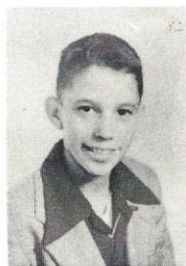
Back row: L. Glover, M. Owens, H. Goodlet, O. Faulker, L. Yongue, J. Wilson, S. Lindler, B. Balwin, E. Shirley, Miss Steel.



SHELVA DOOLITTLE - PRESIDENT



J. P. WILSON, - VICE-PRESIDENT



LARRY BLAIR - SECRETARY



TANNER
JEANETTE TANNER
TREASURER.

Love Jeanette

Seventh Grade



First row, left to right: Mrs. Upton, M. Faulkner, S. Reese, A. Mayer, J. Doolittle, C. Price, B. Glover, M. Robinson.
 Second row: M. Boulware, B. Icard, C. Boulware, E. Beeley, J. Chappell,
 Third row: R. Weaver, R. Smith, J. Dickerson, J. Taylor, R. Stevenson, W. Douglas, D. Cromer, B. Lindler.

President..... Sylvia Reese
 Vice-President..... Earl Florence
 Secretary..... Mamie Faulkner
 Treasurer..... Adam Mayer



S. REESE



M. FAULKNER



A. MAYER



ACTIVITIES



Student Council

OFFICERS

President.....Betty McDowell
Vice-President.....Martha McMeekin
Secretary.....Ray Price
Treasurer.....Betty Ruth Traylor
Advisor.....Mrs. C. L. Jones



B. MCDOWELL



Seated, left to right: C. McLendon, B. Hood, R. Price, M. McMeekin, B. McDowell, Mrs. Jones, B. Traylor, H. McMeekin, C. Miller.
Standing: J. Chappel, M. Boulware, L. Blair, W. Traylor.

Beta Club



OFFICERS

- President..... Patsy Blair
- Vice-President..... Florence Owens
- Secretary..... Isabelle Wright
- Treasurer..... Sybil Florence
- Advisor..... Mrs. J. M. Upton

P. BLAIR



The Panther



Editor-in-Chief.....Patsy Blair
 Assistant Editor.....Henrietta Rosson
 News Editor.....Isabelle Wright
 Sports Editor.....Betty McDowell
 Feature Editor.....Emily Traylor

Bus. Manager.....Marion Douglas
 Asst. Bus. Mgr.....Martha McMeekin
 Circulation Mgr.....Ray Price
 Exchange Editor.....Wallace Martin
 Advisor.....Mrs. C. L. Jones

*Remember
 all the hard
 stripes we
 went through
 in our
 paper days!*

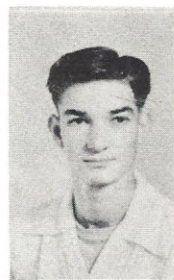


"Blue And Gold"



MARTIN

Editor-in-Chief.....	Wallace Martin
Assistant Editor.....	Patricia Suber
Business Manager.....	Philip Lindler
Asst. Bus. Mgr.....	Marion Douglas
Club Editor.....	Kate Youngue
Sports Editor.....	Betty McDowell
Photo Editor.....	Emily Traylor
Circulation Managers.....	Bennie Tanner Ray Price
Advisors.....	Mrs. J. M. Upton Mrs. C. L. Jones



LINDLER



SUBER



DOUGLAS

Band

TRUMPETS

Marion Douglas
Wilma Traylor
Blair Baldwin
Hayne McMeekin
Carol Cooley
Patricia Suber
Mitchell Rabb
Billy Burley

SAXOPHONES

Betty McDowell
Isabelle Wright
Edwin Cooley
Johnny Robinson
Pete Ragsdale
Frances Long

CYMBALS

Ann Dickerson



*Being in the band
was fun was it not??*

TRUMPETS

Tommy Burley
Eddie Robinson
Charles Youngue
David Traylor
Frances Stevenson

CLARINETS

Martha McMeekin
Joan Fee

TROMBONES

Henrietta Rosson
Carlton Boulware

DRUMS

Mary Ross Robinson
Roy Stevenson
Larry Blair
Jimmy Traylor
Thomas Fuller
David Stevenson
Ray Price

BASS HORN

Roy Sane

ALTO HORNS

Mary Anne Douglas
Betty Anne Hood

Piano Students



This is with
 genuine interest
 and a desire to succeed
 in music. You have been
 steadily progressing
 with it. My sincerest wishes
 for continued progress
 Love
 Mrs. Goddard



President.....Patsy Blair
 Vice-President.....Emily Traylor
 Secretary.....Isabelle Wright
 Treasurer.....Kate Youngue
 Director.....Mrs. A. B. Cooley

Glee Club



*Always remember
 our Glee Club
 As if we could
 forget them.*



J. H. A.

President.....Florence Owens
 Vice-President.....Shirley Brown
 Secretary.....Emily Traylor
 Treasurer.....Betty Hood
 Sponsor.....Mrs. Earl Melton

Being in the Home Ec. Club was worth hard work + forgot we're cooking days-ug!!

F.F.A.

President.....Hayne McMeek
 Vice-President..... Billy Berk
 Secretary..... Thomas Full
 Treasurer..... Earl Wilk
 Sponsor.....Mr. R. E. Norr





GIRLS

President..... Emily Traylor
 Vice-President..... Ann Dickerson
 Secretary..... Helen Stevenson
 Treasurer..... Mary A. Douglas

*It was
 wonderful
 being an officer & also
 being an 4-H*

BOYS

President..... Marion De
 Vice-President..... Hayne McM
 Sec-Treas..... Larry





MOST POPULAR



NEATEST



BEST LOOKING



MOST DEPENDABLE



MOST ATHLETIC



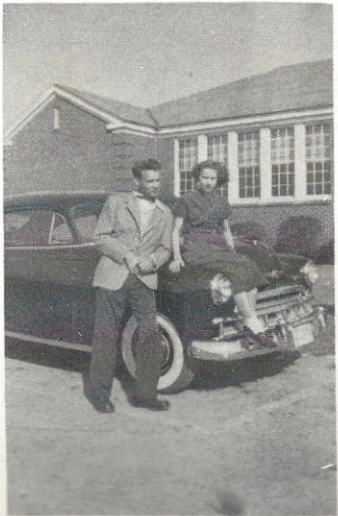
WITTIEST



BEST ALL ROUND



MOST INTELLECTUAL



FRIENDLIEST

S
e
n
i
o
r
c
l
a
s
s

S
u
p
e
r
l
a
t
i
v
e
s



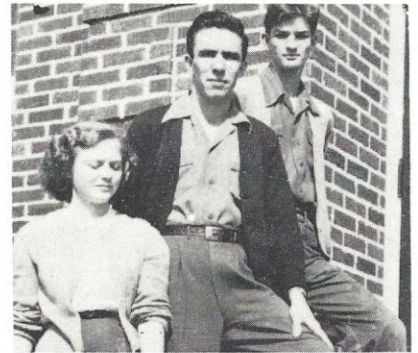
"WHO'S WHO"
Philip Lindler
Betty McDowell



BIBLE TEACHER
Rev. Ray Hook



"D.A.R. CITIZEN"
Isabelle Wright



"ALL-STARS"

Emily Traylor, B. Tanner,
Philip Lindler

HOMECOMING COURT

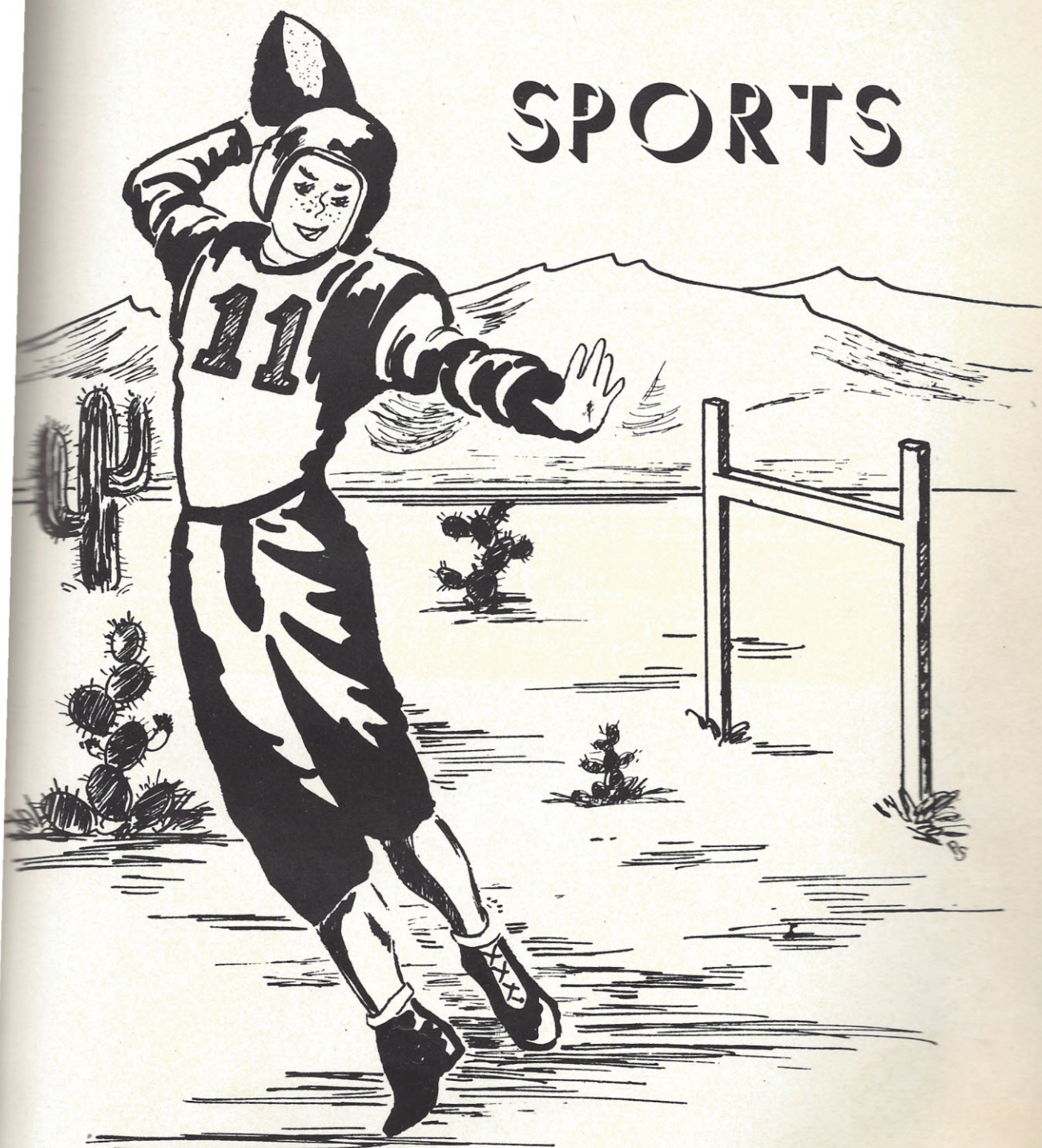
S. Brown M. McMeekin P. B.



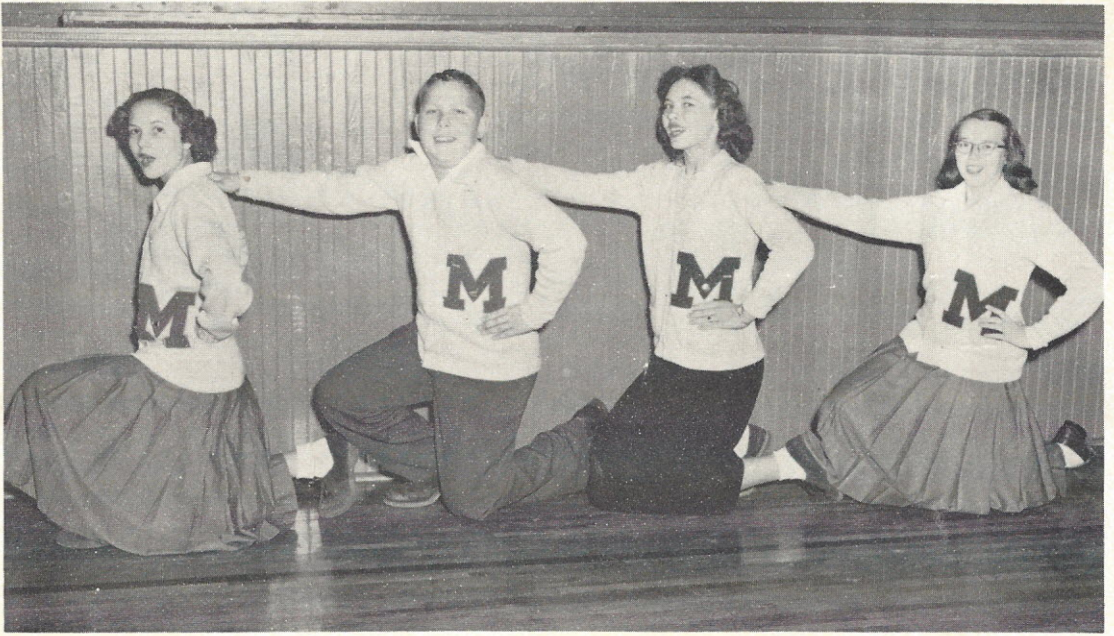
MISS H. MISS
Betty McDowell



SPORTS



Cheerleaders



Betty Anne Hood, Carol Cooley, Gilda Cromer, Mary Ann Douglas

Boys' Basketball Team



First row: Mack Lindler; Billy Tanner; Philip Lindler, Captain; Bennie Tanner; Wallace Martin.

Back row: Mr. R. V. Watson, Coach; Eldridge McLendon; Hayne McMeekin; Blair Baldwin; Larry Blair; Pete Ragsdale.

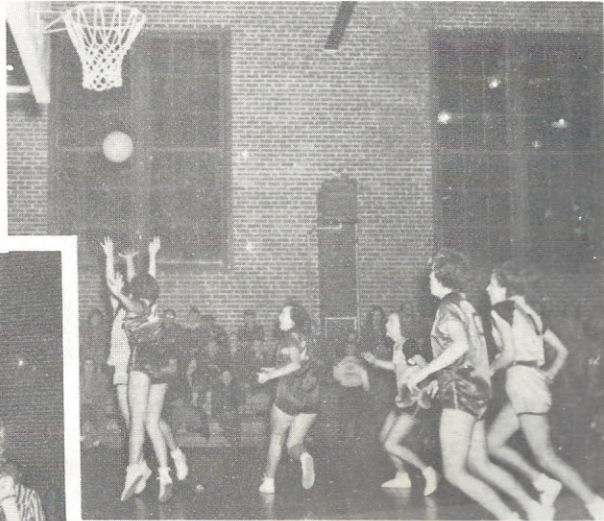
Girls' Basketball Team



First row: Patsy Blair; Sybil Florence; Helen Stevenson; Emily Traylor, Captain; Henrietta Rosson; Nina Stevenson; Isabelle Wright.

Second row: Caroline Millar; Ola Faulkner; Betty Jo Widener; Ann Dickerson; Betty Traylor; Pat Suber; Mr. R. V. Watson, Coach.

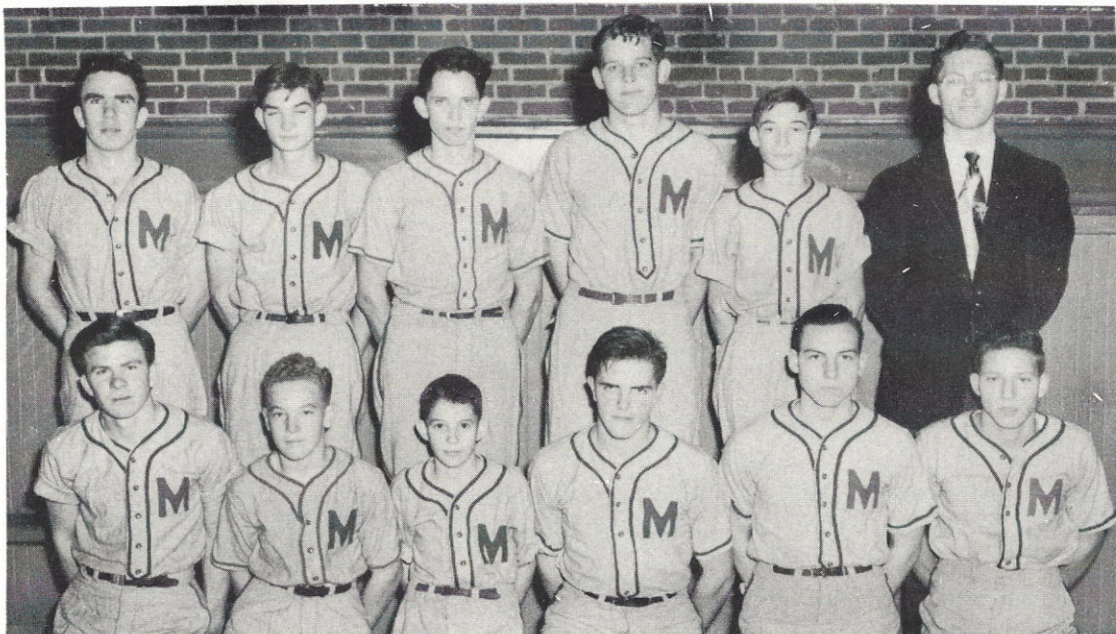
MONTICELLO



IN

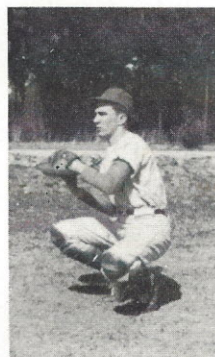
ACTION--

Baseball Team of '49



First row, left to right: Billy Tanner, Hayne McMeekin, Larry Blair, Eldridge McLendon, Thomas Fuller, Wayne Price.

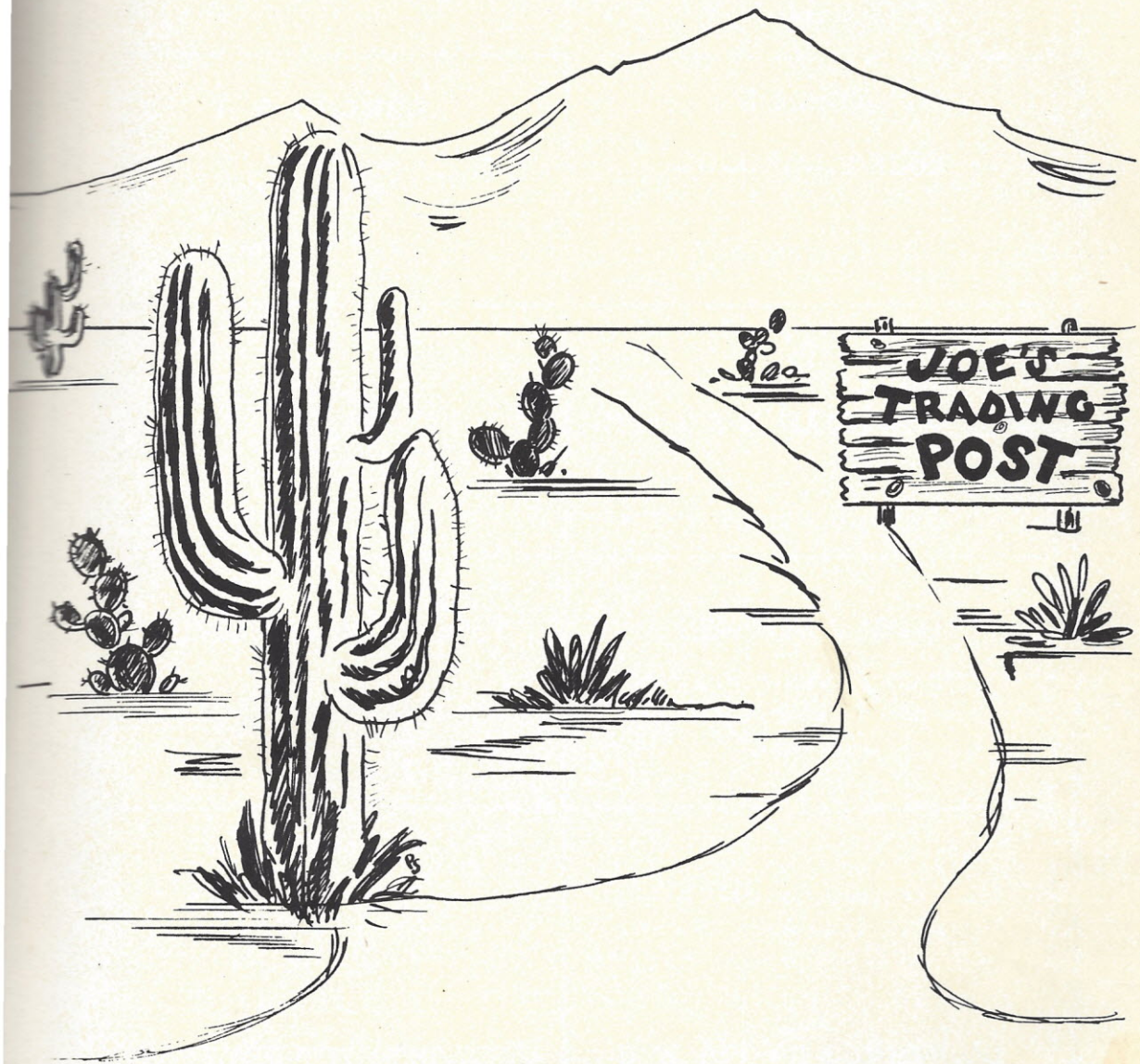
Back row: Bennie Tanner, Philip Lindler, Wallace Martin, James Berry Mack Lindler, Allen Cooley.



*The Mighty Panthers
On The Field*



ADVERTISING



Compliments
Of
REESE MERCANTILE CO.

Newberry, S. C.

BRABHAM RADIO-TELEVISION

Sales and Service

Winnsboro, S. C.

T. V. CROMER
Groceries, Gas, Oil
Pomaria, S. C.

McMASTER
COLONIAL DRUGS

Winnsboro, S. C.

J. L. DICKEY



Blairs, S. C.

Compliments
Of

CLAUDE H. RAGSDALE, JR.

Blairs, S. C.

WALDROP RADIO SERVICE

Radio-Television

Winnsboro, S. C.

THE MEN'S SHOP

"Exclusive Men's Wear"

Winnsboro, S. C.

Phone 432

Compliments
Of

THE NEWBERRY OBSERVER

Newberry, S. C.

Congratulations
Seniors!

H. H. BROWN LUMBER CO.

Strother, S. C.

T. A. LADD

General Merchandise

Strother, S. C.

A. E. DAVIS & CO.

"Your Checkerboard Store"

TERMINAL GRILL

Sandwiches - Short Orders

WESTERN UNION

B. F. Arnette, Agt.

U. G. DESPORTES CO.

"For A Better Fairfield"

Phone 325
Winnsboro, S. C.

WINNSBORO

MOTOR SALES CO.

"Your Chevrolet Dealer"

Winnsboro, S. C.

B. B. MARTIN

General Merchandise

Monticello, S. C.

Shop At

MONTICELLO

MERCANTILE CO.

Monticello, S. C.

A. H. McMeekin

HORN'S

"Red Goose Shoes for all
The Family"

Winnsboro, S. C.

Read

THE NEWS AND HERALD

Fairfield County Weekly

H. J. SUBER

Esso Service
General Merchandise
Strother, S. C.

BURLEY'S SERVICE STATION

Gas, Oils, Repairs
Strother, S. C.



JIM BUMGARDNER

Winnsboro, S. C.

"That Good Gulf Gas"



FAIRFIELD OIL CO.

Compliments
Of

WINNSBORO FURNITURE CO.

H. D. McMeekin

JOHNSON BUICK COMPANY

Winnsboro, S. C.
International Harvester
Repair Service

GERMANY-ROY-BROWN CO.

Produce Dealer
Columbia, S. C.

PALMETTO FROZEN FOOD

LOCKER CO.

Winnsboro, S. C.

POPE'S ESSO STATION

Winnsboro, S. C.

Compliments
Of

ROYAL CROWN

BOTTLING CO.

FAIRFIELD FLOWER SHOP

Winnsboro, S. C.

Columbia, S. C.

MERCHANTS and PLANTERS BANK

Winnsboro, S. C.
Safe - Sane - Sound

R. F. LONG

General Merchandise

Strother, S. C.

ICE CREAM SHOP

Carolina Theater Building

Winnsboro, S. C.

J. B. FRAZIER, JR.

Pulpwood Dealer
Blairs, S. C.

FAIRFIELD BUILDERS

SUPPLIES

Winnsboro, S. C.

Congratulations
Seniors

WINNSBORO PETROLEUM CO.

Winnsboro, S. C.

For Farm Fresh Dairy Products

EDISTO FARMS DAIRY

Stop At Our Dairy Store In Eau Claire
Locally Produced Dairy Products in Columbia

FRAZIER-STEVENSON MOTORS

Phone 390

Winnsboro, S. C.

LYLES AND LYLES

Super Market

Winnsboro, S. C.

Compliments
Of
L. C. HARDEN, JR.
Winnsboro, S. C.

BANK OF FAIRFIELD

Winnsboro, S. C.

JACKSON'S
Wayside Lunch
Winnsboro, S. C.

R. M. BLAIR

General Merchandise

Blairs, S. C.

Compliments
Of

BELK'S

Shoes - Hats - Dry Goods - Clothing
Winnsboro S. C.

UNITED STATES RUBBER CO.

Winnsboro Mills

Winnsboro, S. C.

"Serving Through Science"

Autographs

Mary Anne,
it has been a great pleasure
going to school with you these very
few years. I think you're a cute, and,
very sweet girl. You're tops with me.
May all the Luck, Success, Happiness,
and Health be yours, as you achieve one
of the most important goals in life -
your High School Education. Luck, and
the very Best of the Eating to you.
Just remain always as you
are now, and you will make life
a pleasure for yourself, and the
others around you.
Remember me -
Love ya' Always,
"Rooney"
Ann

Compliments
Of

SHIVAR SPRINGS, INC.

Shelton, S. C.

Manufacturers of Shivar Ginger Ale and Other

Quality Soft Drinks

UNIVERSITY SUPPLY
&
EQUIPMENT CO.

High School and College Annuals

1200-1204 Ayers Street

Fort Worth 5, Texas

PUBLISHERS OF THIS ANNUAL

Mary Ann, I have enjoyed
knowing you all these years.
I want to wish you the
very best of everything.
Love always,
Doris D.

Mary Ann, I hardly know
what to write, but here goes.
I think you're wonderful
sweet and nice, a little
on the stubborn side at
times, but I still think
you're swell! Lots of love
and luck!! (Little Willie)
Love ya always,
(Big Willie)
Betty

I will miss all of
you very much
Best of wishes.
Love,
Kate Younger

Mary Ann, I wish
you the best life
has to offer.
Keep 'em sweet!
Love,
Dollie Smith

Dear Mary Ann,
You do are as cute and
sweet little ole girl. I'm
always love you and don't
forget me when we move
Love
Shirley

Have enjoyed going
to school with you this
year and may you have
a good time going to school
next year
Benie Sawyer

don't forget me
I'll be
waiting

Best of
luck to a
small girl.
Billy Tanner

Best of luck to you
always. R. V. Watson

Luck to a good cheerleader

Leonard

as good cheerleader
and a better girl.

I wish you the best
in anything you do, especially
love. I have enjoyed knowing you.

Love always,

Charles (the boy that once was ours)

"Ditto"
Blair Baldwin

From the Future President of the island of Oahu
Best wishes, luck, and happiness to a well
girl love, forever

Best
of luck
always
mitchell Kabb

Those are Red, and violets are blue,

Peacans are nuts, and so are you.
Mark Tindler, President of U.S.

Best of luck, To a Powell classroom
Mark Tindler (President of United States of America) 1999-8





SCHOOL
ZONE



UNIVERSITY SUPPLY EQUIPMENT
ST. MICHAEL'S