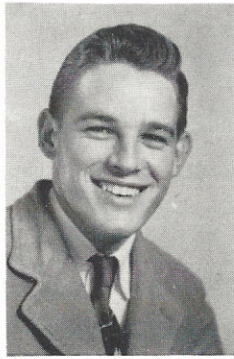


JAMES NEIL BERRY

"Dick" Handsome, a lady's man, particularly interested in Henrietta, speaks with a slow drawl, athletic. Pet expression: "Mind your daddy!"

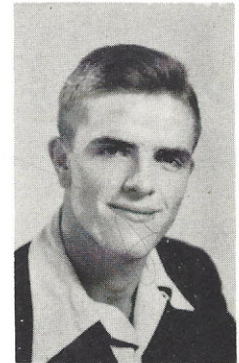


SYBIL GERDINE FLORENCE

"Monkey" Full of fun, athletic, bashful (?), cute, easy-going, pigeon-toed. Pet expression: "I declare."

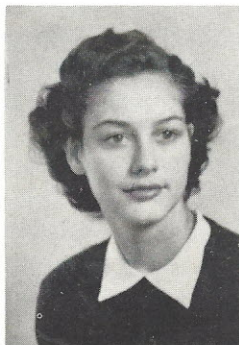
THOMAS ELDRIDGE McLENDON

"Mac" Witty, pesters everybody, friendly, pretended woman-hater, laughs heartily, athletic. Pet expression: "Hi Babe!"



MARTHA JO McMEEKIN

"Mart" Sweet, easy-going, very helpful, modest, intellectual, ambitious, immaculate. Pet expression: "Quit it now."



MARY FLORENCE OWENS

"Flossie" Sentimental, sweet, good natured, smart, poised, a true friend. Pet expression: "Yeah."

DOROTHY ANN PARKER

"Dot" Carefree, gay, plain spoken, tall and graceful, nice looking, Jack conscious? Pet expression: "Oh, land!"