

# Eighth Grade

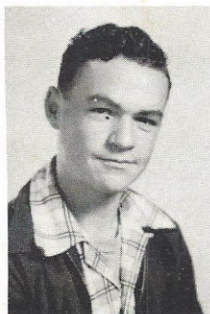


A. Mayer, M. Turner, W. Turner, L. Glover, B. Lindler, L. Lever, B. Glover, S. Reese, B. Icard, M. Boulware, J. Doolittle, J. Ramsey, J. Wilson, G. Anderson, H. Brice, M. Faulkner, M. Robinson, R. Weaver, D. Cromer, W. Douglas, E. Berley, Mr. M. E. Stevenson.



SYLVIA REESE

President



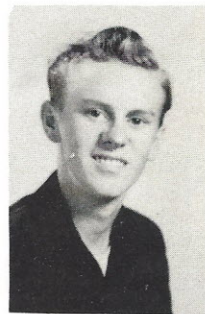
GENE ANDERSON

Vice-President



WILLIAM TURNER

Secretary



EDWARD BERLEY

Treasurer