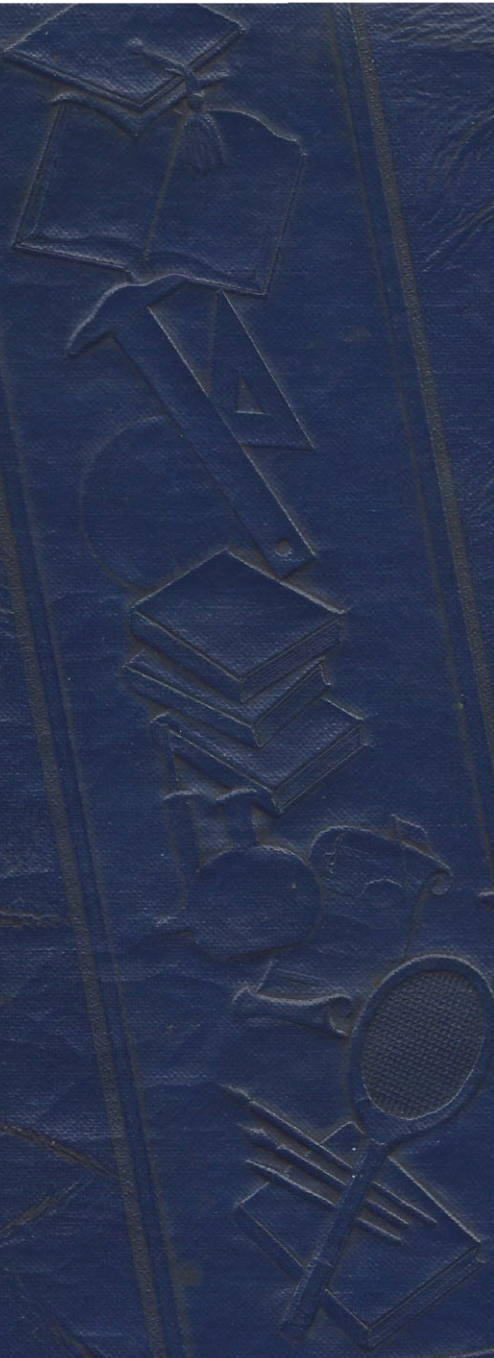




*The Blue and Gold*





Mary Ann  
Douglass Hay





MARY ANN DOUGLAS







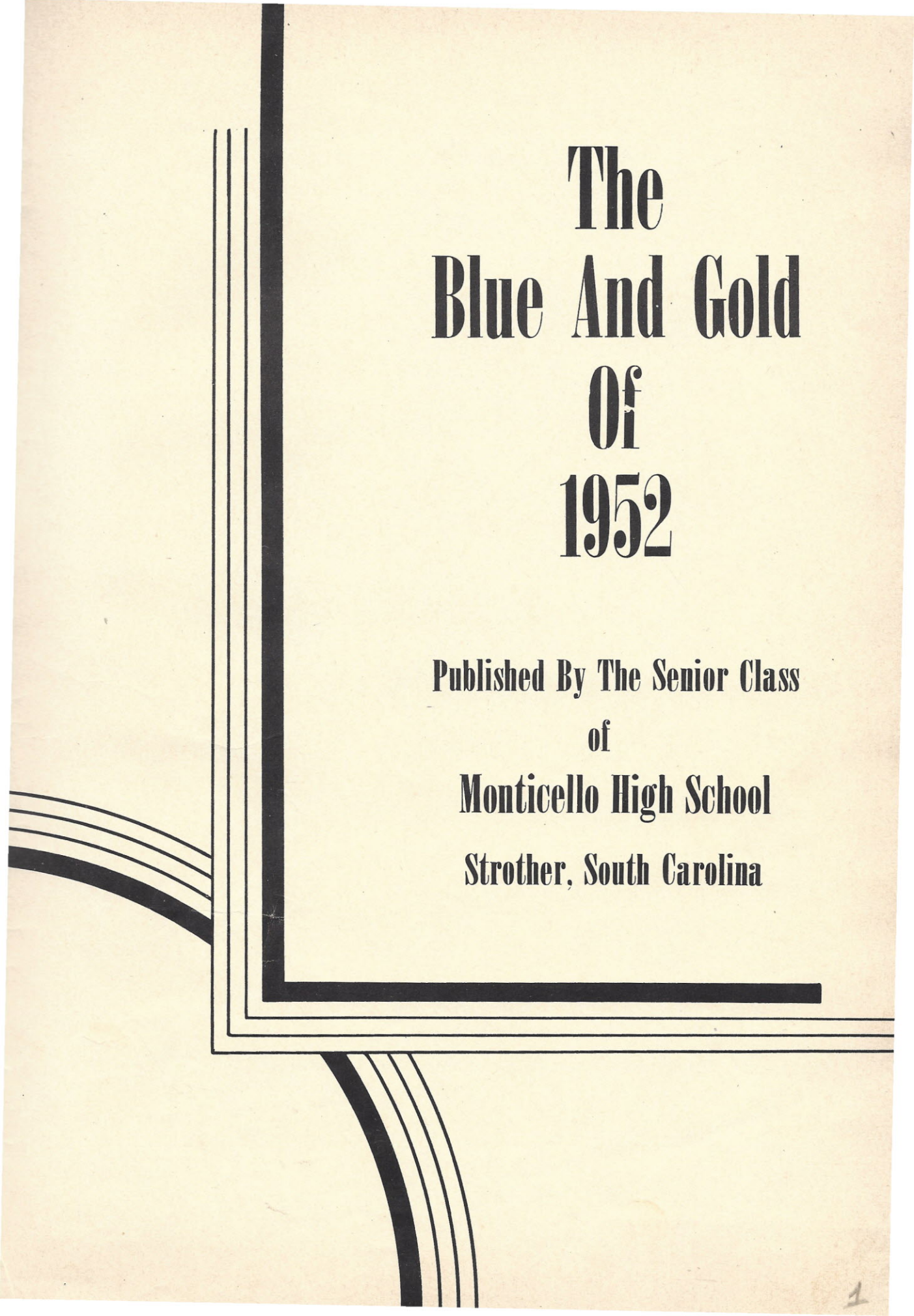












**The  
Blue And Gold  
Of  
1952**

**Published By The Senior Class  
of  
Monticello High School  
Strother, South Carolina**









DEDICATION

TO

PRINCIPAL M. E. STEVENSON

We, the Seniors of 1952, dedicate our Blue and Gold to  
Principal M. E. Stevenson, our coach, teacher and friend.







# Trustees



Front row, left to right: W. B. McDowell, Chairman; C. H. Ragsdale, R. R. Long, George Yongue.

Second row: T. C. Traylor, Julian Martin, H. E. Douglas, Ross Robinson, Albert Ladd.

## LUNCH ROOM WORKERS



Mrs. U. L. Burley, Mrs. S. Crowder, and Mrs. M. B. Burley.

## SENIOR BREAKFAST



Betty Hood, Grace Cromer, Mack Lindler





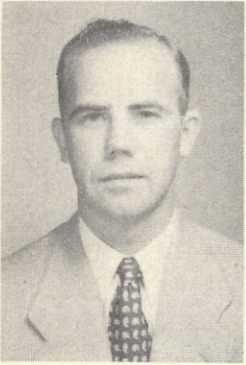




# FACULTY



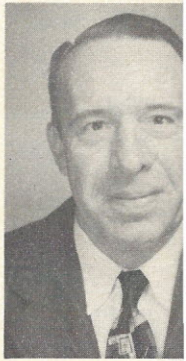
# FACULTY



FOSTER



R. V. WATSON  
Superintendent



STEVENS



THOMAS



STEELE



DRAFTS



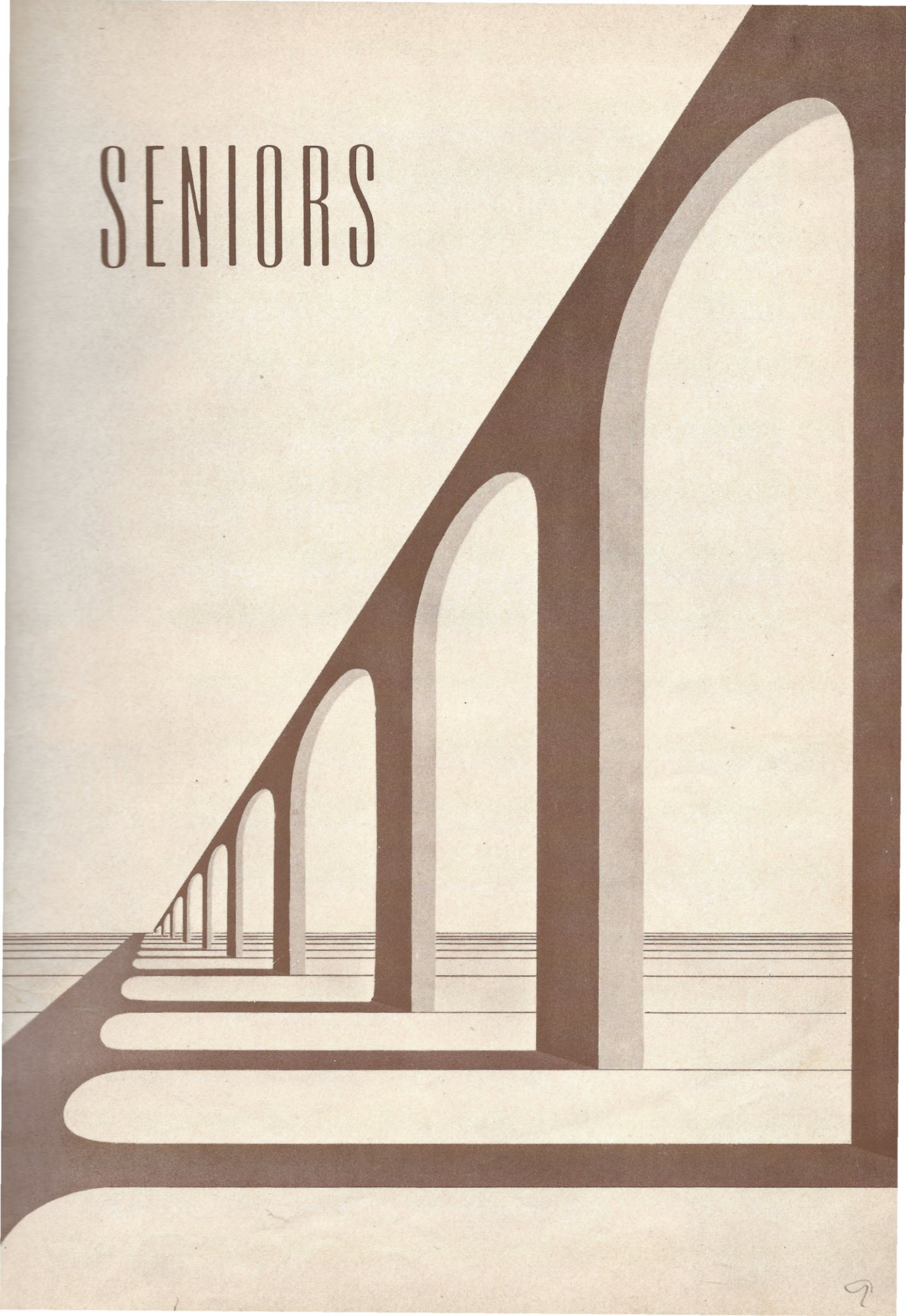
CAMPBELL



NORMAN



# SENIORS





# Senior Officers

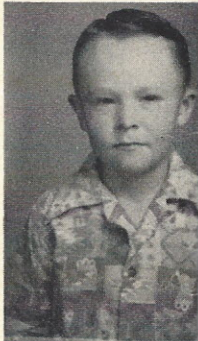


Mascot

Mascot

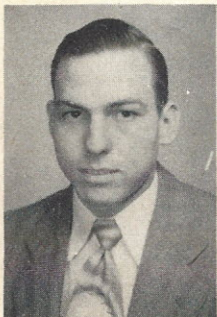


Karen Allen



David Marti

PRESIDENT.....THOMAS FULLER  
 VICE PRESIDENT.....EARL WILKES  
 SECRETARY.....BETTY HOOD  
 TREASURER.....MARY ANNE DOUGLAS



THOMAS JULIAN FULLER

"Tommy"...Witty...Friendly...Neat...Dark...Nice Looking  
 ...Dependable ..Mature...Pet Expression: "If I aint right,  
 I'll eat it"





L. B. ANDERSON, JR.

"Junior"...Witty...Friendly...Alert...Popular...Good Sport...Happy...Pet Expression: "Ahh!"

BILLY GENE BERLEY

"Barley"...Quiet...Modest...Short...Cute... Good Natured...Student Driver...Pet Expression: "Ah Shucks".



GILDA HARRIET CROMER

"Monkey"...Temper...Blue Eyes...Giggles ...Piano Player...Humorous...Good for a rainy day...Pet Expression: "I'll swarney".

MELVER GRACE CROMER

"Gracie"...Dependable...Congenial...Co-operative...Affable...Modest...Pet Expression: "Gee Whiz".



MARY ANNE DOUGLAS

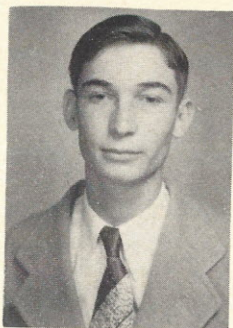
"Anne"...Happy...Carefree...Serious...Intellectual...Accurate...Capable...Home on the stage...Pet Expression: "I'll swigger".

JOSEPHINE ANN FEE

"Joan"... Ambitious ...Jovial ...Good Actress...Mischievous...Pianist...Conversationalist...Home Loving ... Generous ...Pet Expression: "I'll be".





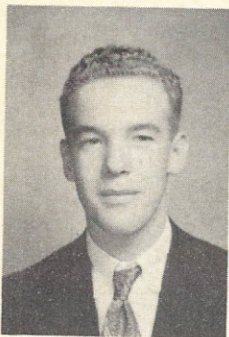


BETTY ANN HOOD

"Squirt"...Popular plus...Busiest person alive...Born leader...Works others...Energetic...Versatile...Happy...Wears honors.. Flower...Pet Expression: "Well daggone".

CARROL MACK LINDLER

"Tall and Slender"...Sought for wit...Likes Basketball and History...Intellectual...Pet Expression: "Ah".



ALBERT HAYNE MC MEEKIN

Curley Head Blond...Tall...Crosby Voice... A Capable Leader...Pet Expression: "Honey Chile".

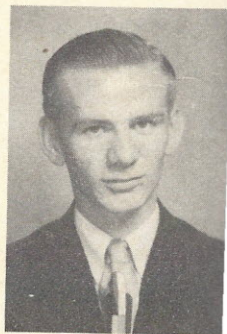
ROBERT KIRKPATRICK POPE

"Bobby"...Jocular....Good Sport.... Energetic..."Cute" ..Neat...Pet Expression: "Well I'll be blamed".



MITCHELL DONALD RABB

"Bud"...Buoyant in Spirit, Happy Go Lucky ...Indispensable to Teams... Accurate Score Keeper...Pet Expression: "Uh,Uh,Uh".



EARL DOUGLAS WILKES

"Ish"...Level headed..."Mathematical Shark"...Good Natured...Serious and knows how, but presumptuous...Pet Expression: "Hello Ole Boy".



## Senior Statistics



LUTHER BERRILL ANDERSON, JR.

Future Farmers of America 3, 4; Panther Staff--Exchange Editor; Annual Staff--Sports Editor; Class Plays 3, 4; Block "M" Club 4--Pres.; 4-H Club 1, 2, 3--Vice-Pres. 3, 4; Friendliest; Baseball 3, 4; Basketball 3, 4; Highest Magazine Salesman 4; Biggest Flirt.



BILLY EUGENE BERLEY

Future Farmers of America 1, 2, 3, 4; Class Play 4; Annual Staff--Art Editor; Quietest.



GILDA HARRIET CROMER

Piano 1, 2, 4; Sextette 4; Voice 4; Piano rating at Columbia College 1; Glee Club 1, 2, 3, 4; Mixed Chorus 2; Band 2, 3; J.H.A. 1, 2; Cheerleader 2, 3; 4-H Club 1, 2, 3, 4; 4-H Program Chairman 4; Class Play 3, 4; Block "M" Club 4; The Panther--News Editor 4; Blue and Gold--Club Editor 4; Most Original 4; DAR Citizen.



MELVER GRACE CROMER

Piano 1, 2, 3, 4; Class Play 3, 4; Glee Club 1, 2, 3, 4; Voice 4; Mixed Chorus 2; 4-H Club 1, 2, 3, 4; Secretary and Treasurer of 4-H 4; The Panther--Exchange Editor 4; Blue and Gold--Circulation Manager 4; J.H.A. 1, 2; Quietest; 2nd Highest Magazine Salesman 4.



MARY ANNE DOUGLAS

Class Officer--Vice-President 1; Treasurer 2, 3, 4; Class Plays 3, 4; Future Teachers 1, 3--Pres.; 4 Pres.; 4-H Club 1, 2, 3, 4; Beta Club 3--Treas., Sec. 4; J.H.A. 1; Pres. 2; Glee Club 1, 2, 3, 4; Piano 1, 2, 3, 4; Band 1, 2, 3, 4; Cheerleader 2; Orchestra 4; Mixed Chorus 2; Block "M" Club 4; The Panther Business Manager; The Panther Staff 1, 2, 3; Reporter 3; Friendliest; Most Athletic; Most Intellectual; Home-Coming Queen Attendant 4; Miss High Miss; Valedictorian.



JOSEPHINE ANN FEE

Class Play 3, 4; Glee Club 1, 2, 3, 4; Pianist for Glee Club 4; Sextette 4; Mixed Chorus 1, 2; Voice 3; Piano rating at Columbia College 1; Piano 1, 2, 3, 4; Band 1, 2, 3, 4; Orchestra 4; Beta Club 3; J.H.A. 1; 4-H Club 1, 2, 3, 4; Basketball 3, 4; The Panther--Feature Editor; Blue and Gold--Photo Editor; Wittiest; Biggest Flirt.



THOMAS JULIAN FULLER

Class Officer--Pres. 3, 4; Future Farmers of America 1, 2, 3, 4; Band 1, 2, 3, 4; Baseball 1, 2, 3, 4; Class Plays 3, 4; Block "M" Club 4; Future Teachers 4--Vice Pres.; Mixed Chorus 2; The Panther--Circulation Manager; Blue and Gold--Assistant Editor; Neatest; Most Dependable; Most Original.



# Senior Statistics



BETTY ANNE HOOD

Class Treas. 1; Class Sec. 2, 3, 4; The Panther--Reporter 2; Asst. Ed. 3; Editor-in-Chief 4; Student Council Sec. 2, 4; Vice Pres. 3; Beta Club 3, 4; Block "M" Club 4; FTA Club 3, 4; 4-H Club 1, 2, 3, 4; Vice Pres. 3; JHA 1, 2; Treas. 2; Glee Club 1, 2, 3, 4; Sextette 4; Mixed Chorus 2; Band 2; Piano 1, 2, 3, 4; Class Plays 3, 4; Head Cheerleader 2, 4; Homecoming "Queen" 4; "Miss Fairfield Jaycee" Queen Attendant 4; Neatest; Best Looking; Most Dependable; Most Popular; Most Interesting; Most Likely to Succeed; Best All Round; Salutatorian.



CAROL MACK LINDLER

Class Officer--Vice Pres. 2; Future Farmers of America, 1, 2, 3; Band 1; Basketball 2, 3, 4; Baseball 2, 3, 4; Class Plays 3, 4; Block "M" Club 4; Mixed Chorus 2; The Panther--Reporter 1, 2, 3; Sports Editor 4; The Blue and Gold--Editor; Most Athletic; Most Intellectual; Beta Club 3, 4; Pres. Beta Club 4.



ALBERT HAYNE McMEEKIN

Class Officer--Sec. 1; Pres. 2; 4-H Club 1, 2, Vice Pres. 3, Sec. and Treas. 4; Future Farmers of America, Vice Pres. 1, 3; Pres. 2; Band 1, 2, 3, 4; Student Council 1, 4; Pres. 4; Cheerleader 1; Beta Club 4, Vice Pres. 4; Basketball 3, 4; Mixed Chorus 2; Class Plays 3, 4; Orchestra 4; Block "M" Club 4; The Panther--Assistant Bus. Mgr. 3; Sports Editor 4; The Blue and Gold--Business Mgr. 4; Best Looking; Most Likely to Succeed; Most Popular; Best All Around; Salutatorian.



ROBERT KIRKPATRICK POPE

Future Farmers of America 1, 2, 3, 4; Class Plays 3, 4; 4-H Club 1, 2, 3, 4; Pres. 4-H 3, 4; The Blue and Gold--Assistant Circulation Manager 4; Most Interesting.



MITCHELL DONALD RABB

Future Farmers of America 1, 2, 3, 4; Band 2, 3; Class Plays 4; Manager of Basketball Teams 3, 4; Block "M" Club 4.



EARL DOUGLAS WILKES

Future Farmers of America, 1, 2, 3, 4; Class Plays 4; Student Council 1; 4-H Club 1, 2, 3, 4; The Blue and Gold--Assistant Business Manager 4; Class Officer--Vice Pres. 4; Beta Club 3.



# Superlatives



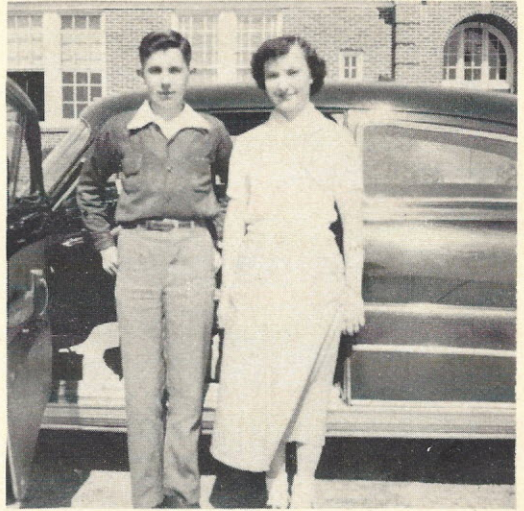
NEATEST



BIGGEST FLIRTS



MOST ATHLETIC



QUIETEST



MOST ORIGINAL



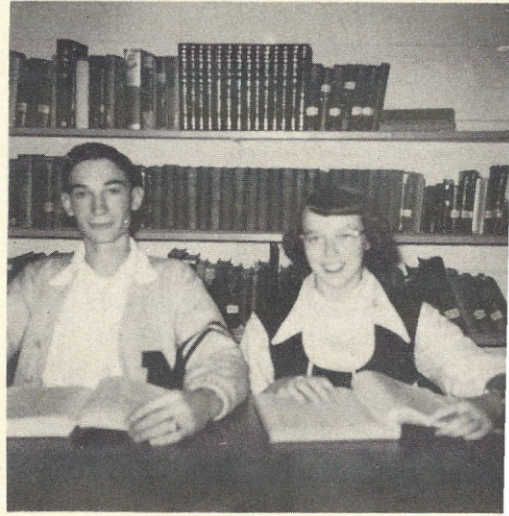
MOST POPULAR



# Superlatives



BEST LOOKING



MOST INTELLECTUAL



FRIENDLIEST



WITTIEST



MOST LIKELY TO SUCCEED



MOST DEPENDABLE



# Superlatives



MOST INTERESTING



BEST ALL ROUND



HIGHEST MAGAZINE SALESMAN; POET



TESTATOR



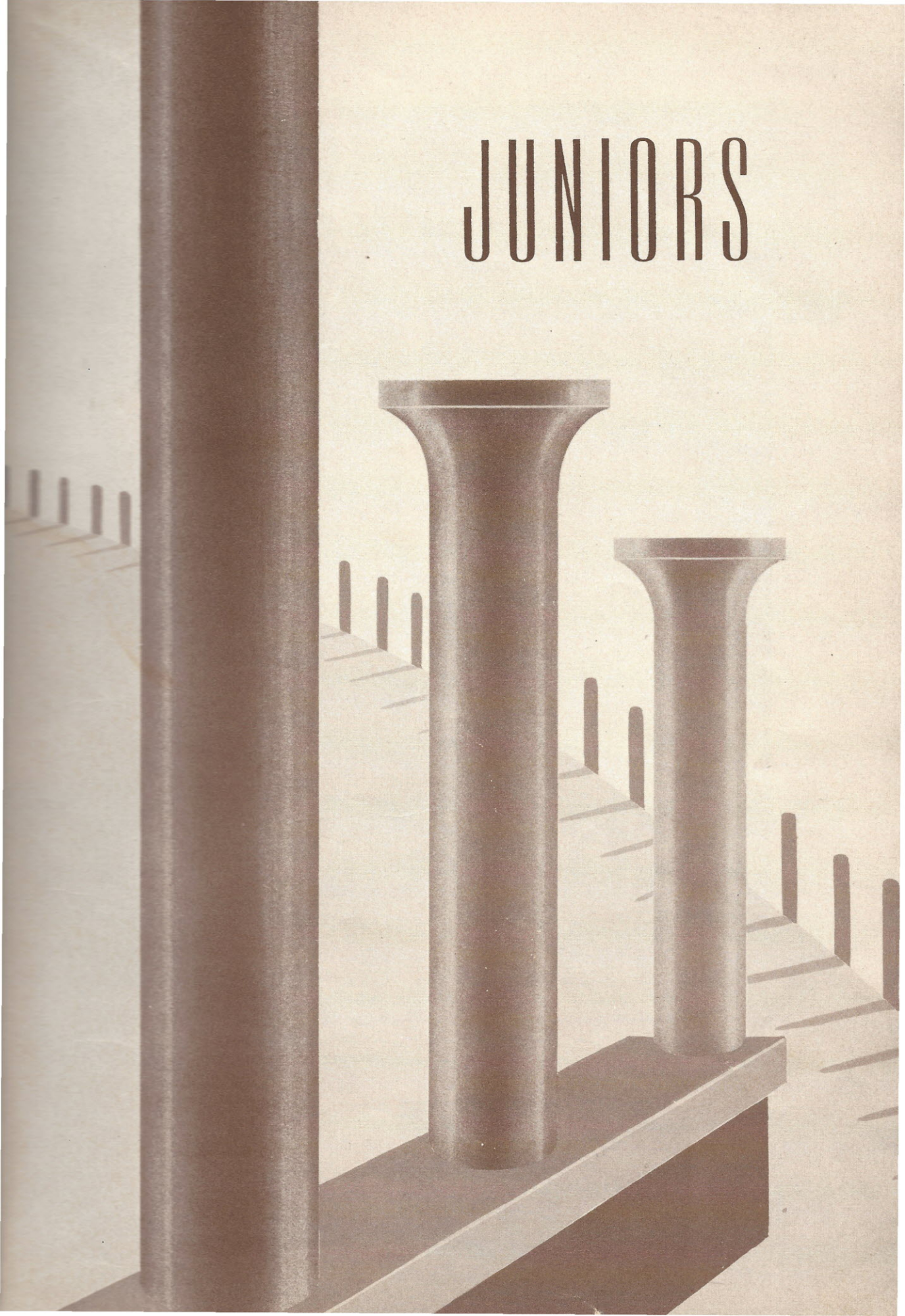
PROPHET







# JUNIORS





# Junior Officers



President.....Margaret Parker  
Vice President.....Betty Jean Shirley  
Secretary.....Horace Stewart  
Treasurer.....Charles McLendon

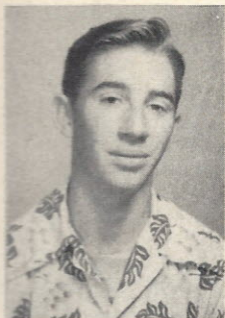


Margaret Parker

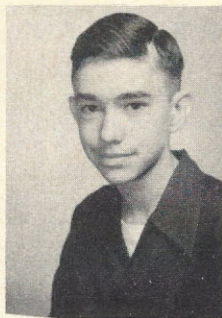




Shirley  
Brown



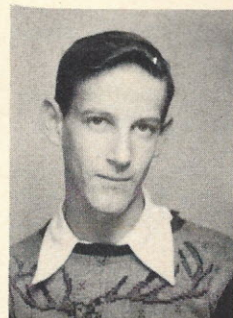
Leonard  
Faulkner



Earl  
Glymph



Caroline  
Miller



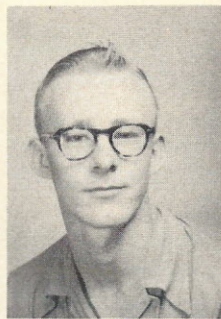
John  
Owens



Betty Jean  
Shirley



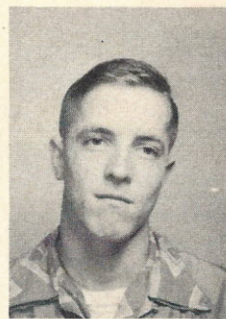
Horace  
Stewart



Royce  
Tanner



Anne  
Turner



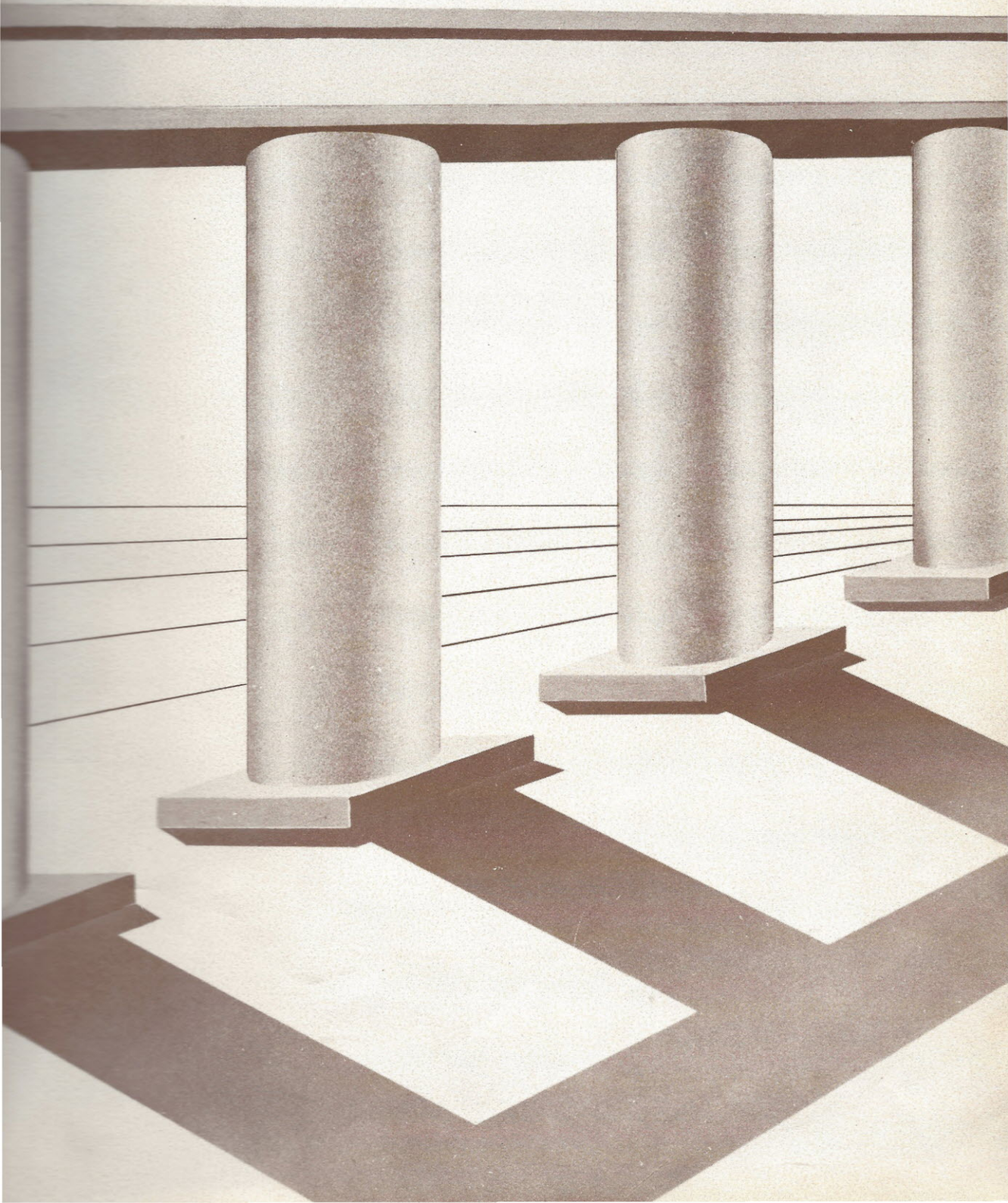
Charles  
McLendon







# SOPHOMORES









## Sophomore Officers



President.....Pete Ragsdale  
Vice President..... Sue Lindler  
Secretary.....Martha Owens  
Treasurer.....Larry Blair  
Reporter.....Ola Faulkner

### Alma Mater

Hail to Thee, our Alma Mater  
Where our thoughts will lie,  
We shall ever love and cherish  
All our precepts high.

Fond the memories that cluster  
Round our dear school halls,  
Naught shall ever dim the luster  
That Thy name recalls.

#### Refrain

Monticello sing we ever,  
Loud Thy praises tell  
Hail to Thee, our Alma Mater  
Hail, All Hail to Thee.





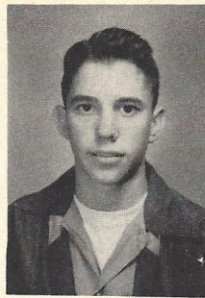




Blair Baldwin



Shirley Berley



Larry Blair



Claudette Dickerson



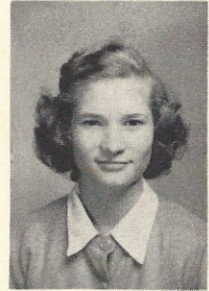
Shelva Doolittle



Ola Faulkner



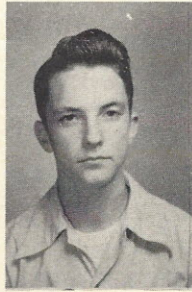
Hazel Goodlette



Sue Lindler



Martha Owens



Pete Ragsdale



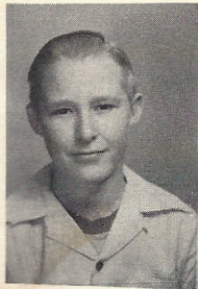
Renita Rawls



Emily Shirley



Jeanette Tanner



Floyd Tanner



Wilma Traylor



Louise Yongue





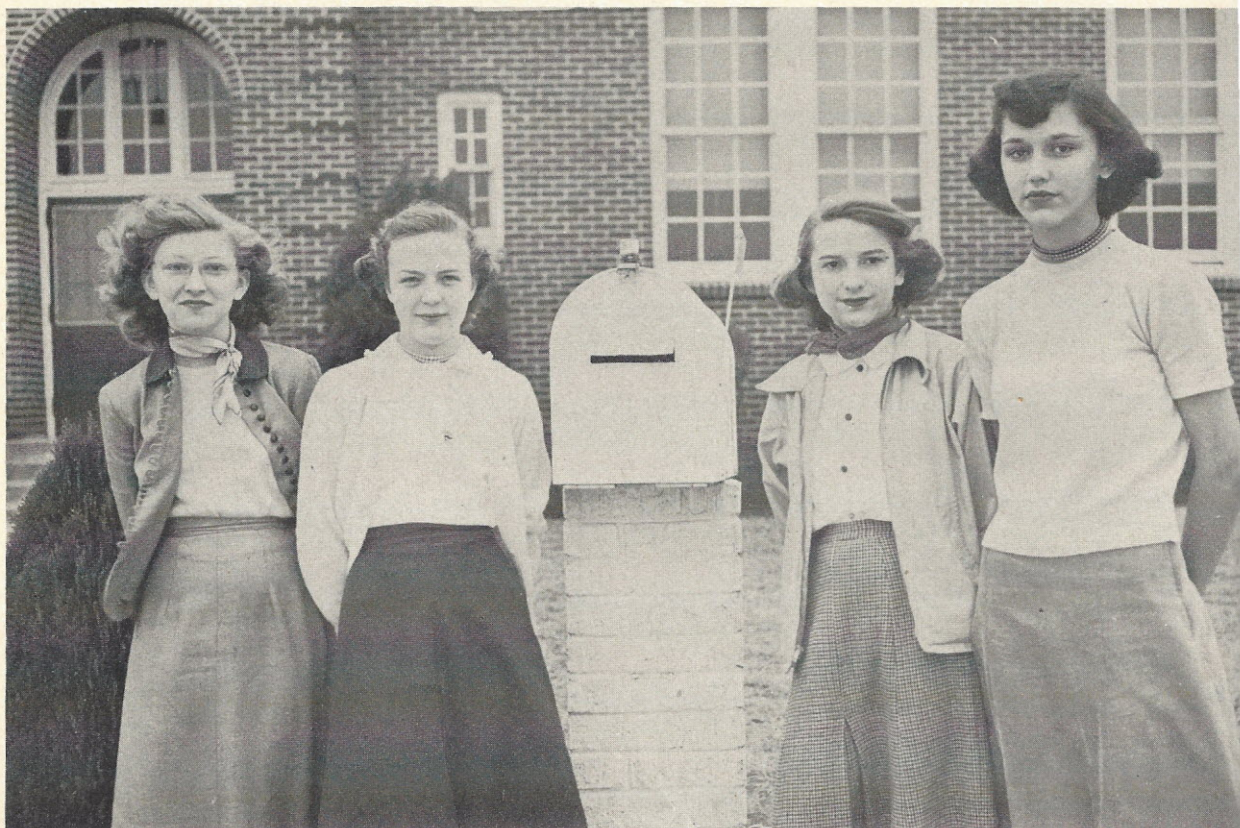


An abstract geometric design featuring a grid pattern of thin black lines on a light beige background. The grid is partially obscured by dark brown, three-dimensional-looking shapes that resemble stylized arches or columns. These shapes are arranged in a way that creates a sense of depth and perspective, with some appearing to recede into the background and others to come forward. The overall composition is clean and modern.

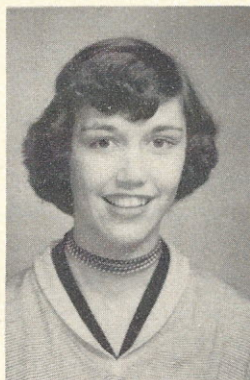
# FRESHMEN



FRESHMEN OFFICERS



President.....Mary Ross Robinson  
Vice President..... Sylvia Reese  
Secretary.....Josephine Doolittle  
Treasurer.....Mary Boulware



Mary Ross Robinson





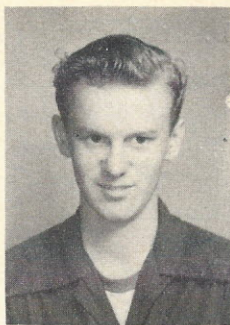
Gene Anderson



Mary Boulware



Hubert Brice



Edward Burley



David Cromer



Wallace Douglas



Josephine Doolittle



Mamie Faulkner



Betty Jean Glover



Lynn Glover



Bobby Icard



Lawrence Lever



Billy Lindler



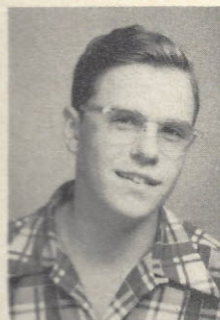
Adam Mayer



Jack Ramsey



Sylvia Reese



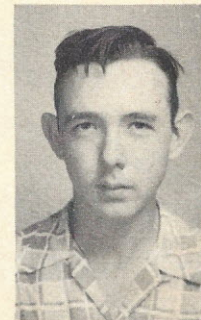
Raymond Smith



William Turner



Jessie Wilson



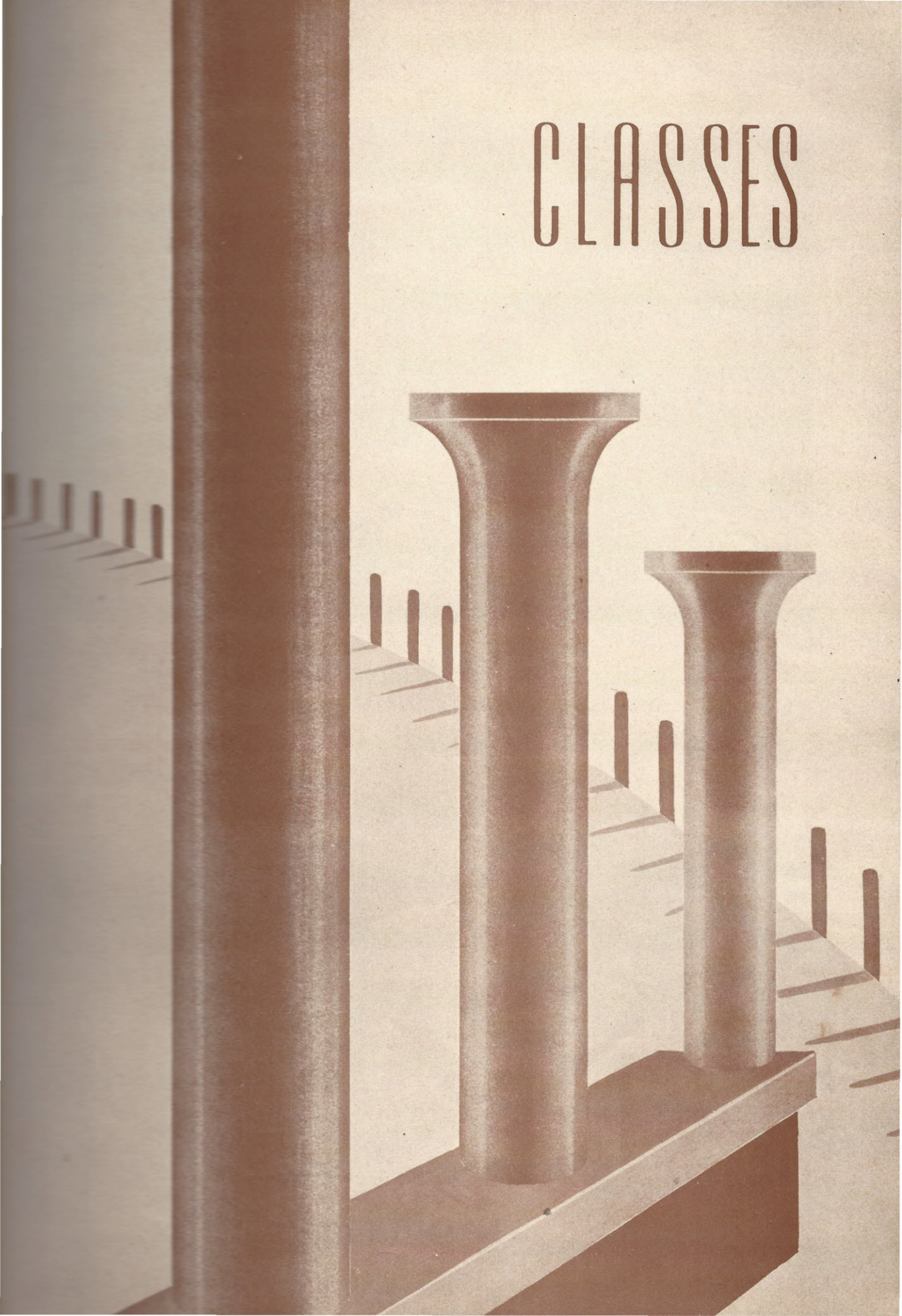
Ray Weaver







# CLASSES









# Eighth Grade

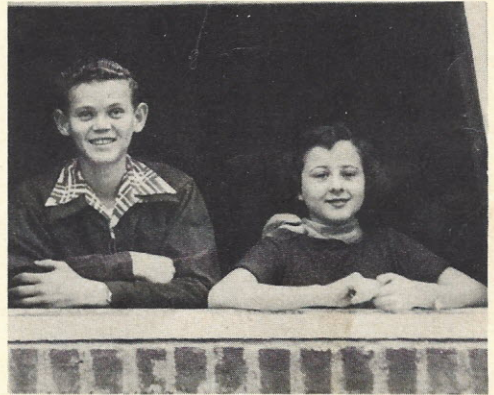
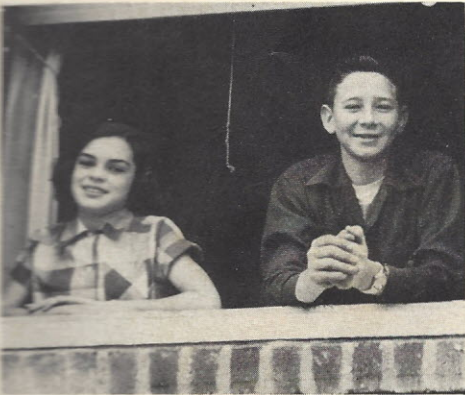


First row, left to right: Peggy Hood, Molly Doolittle, Polly Doolittle, Sandra Brown, Anne Martin.

Second row: Johnny Robinson, Frances Long, Carlton Boulware, Jane Clowney, David Wilson.

Third row: Robert Stewart, Tommy Widner, Earl Florence, Billy Burley, David Traylor.

Fourth row: Miss Kittie L. Steele.



President.....Sandra Brown  
Vice President.....David Traylor

Treasurer.....Earl Florence  
Secretary.....Anne Martin



# Seventh Grade



First row, left to right: Johnnie Stevenson, Chester Doolittle, William Lewis, J. C. Doolittle.

Second row: Emmie Lou Dickerson, Evelyn Douglas, Francis Stevenson, Carolyn Boulware, Ruth Robins.

Third row: David Stevenson, Nancy Blair, Harold Smith, Claire Holcomb, James Farmer.

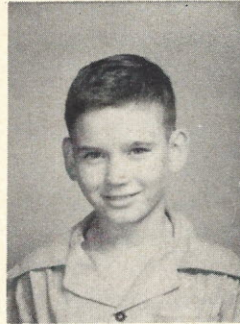
Fourth row: Richard Brice, Willie Taylor, Woodrow Levister, Miss Nora Norman.



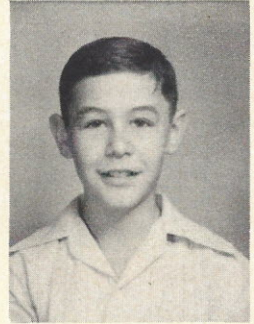
Nancy Blair  
President



Carolyn Boulware  
Vice President



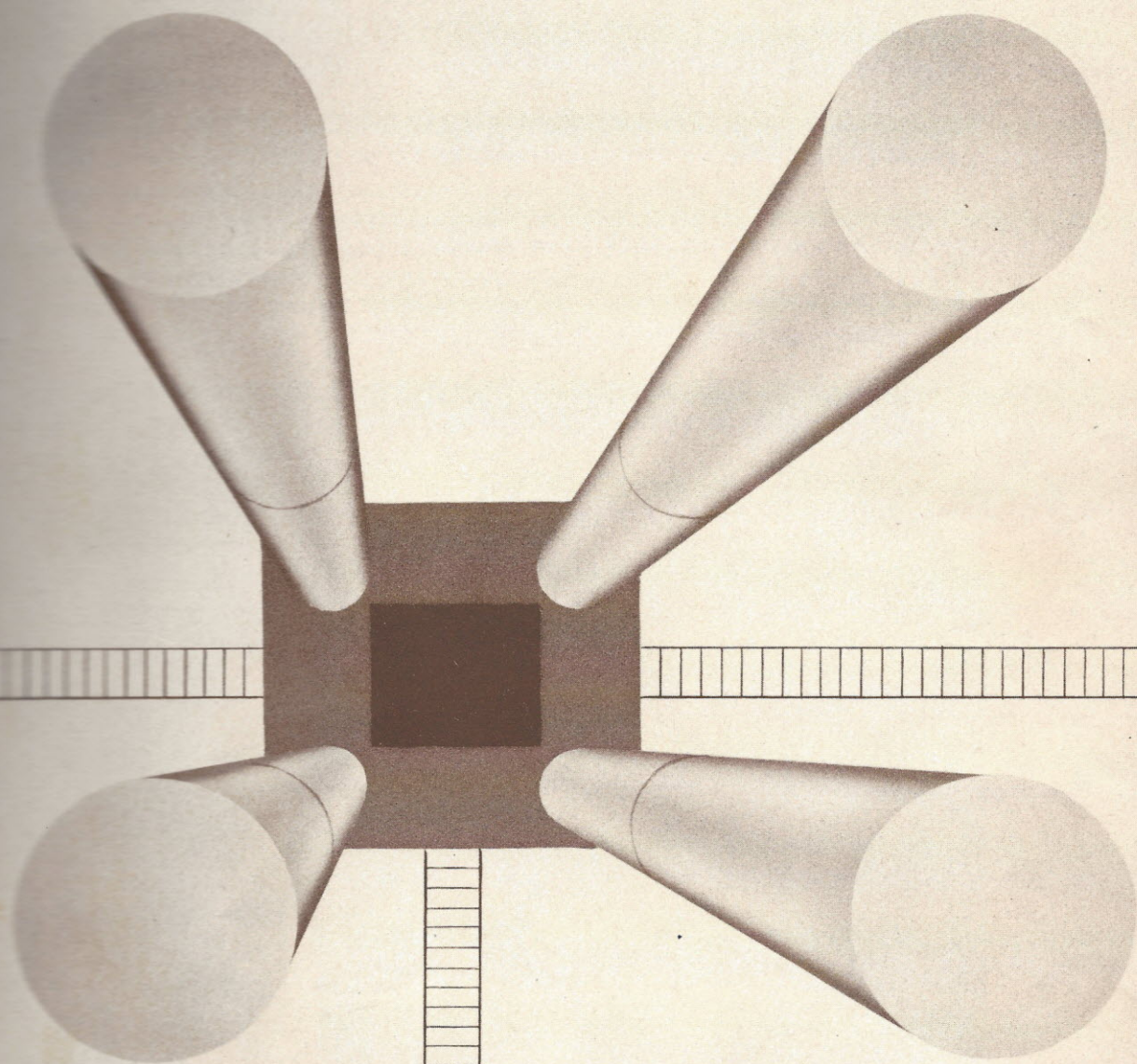
William Lewis  
Secretary



Johnnie Stevenson  
Treasurer



# ACTIVITIES





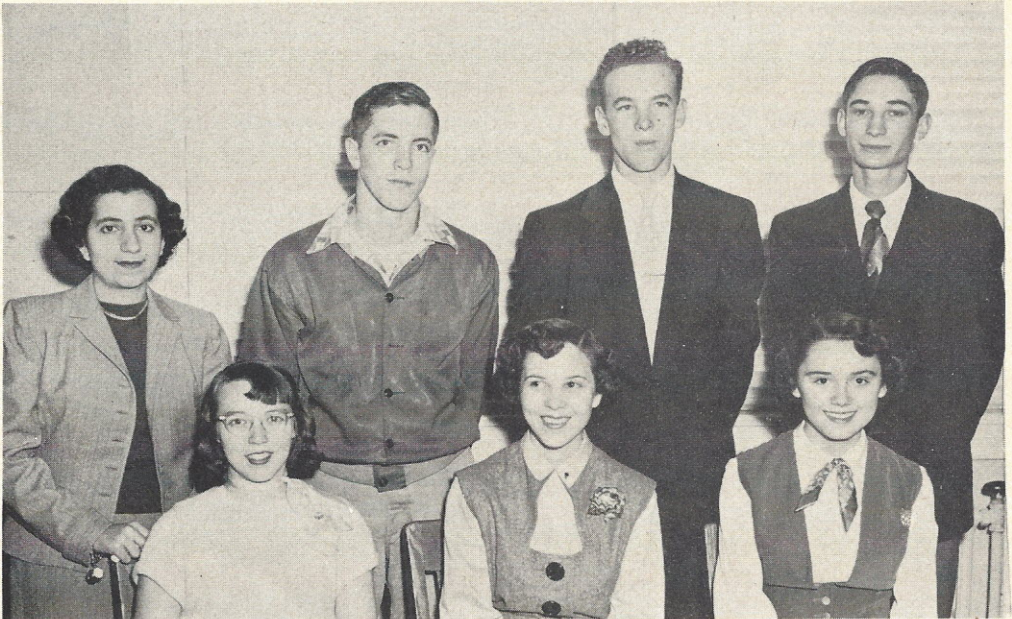
## Student Council



First row, left to right: Betty Hood, President; Hayne McMeekin, Vice President; Ann Turner, Treasurer; Charles McLendon.

Second row: Nancy Blair, Ann Martin, Mary Ross Robinson, Wilma Traylor, Billy Burley, William Turner, Johnnie Stevenson, Pete Ragsdale, Miss Kittie Steele, Sponsor.

## Beta Club



First row, left to right: Mary Ann Douglas, Secretary; Betty Hood, President; Ann Turner, Vice President.

Second row: Miss Nora Norman, Sponsor; Charles McLendon, Treasurer; Hayne McMeekin, Mack Lindler.



# The Panther Staff



First row, left to right: Margaret Parker, Mary Ann Douglas, Betty Hood, Horace Stewart, Miss Gertrude Thomas, Sponsor.

Second row: Grace Cromer, Mack Lindler, Hayne McMeekin, Junior Anderson, Joan Fee, Gilda Cromer, Thomas Fuller.



First row, left to right: Margaret Parker, Mary Ann Douglas, Betty Hood, Horace Stewart.

Second row: Mack Lindler, Hayne McMeekin, Gilda Cromer, L. B. Anderson, Jr., Grace Cromer, Joan Fee.

Third row: Claudette Dickerson, Ann Turner, Charles McLendon, Thomas Fuller, Miss Thomas, Sylvia Reese, Mary Ross Robinson, Caroline Miller, Wilma Traylor.



# The Annual Staff



First row, left to right: Earl Wilkes, Asst. Business Manager; Hayne McMeekin, Business Manager; Mack Lindler, Editor; Thomas Fuller, Asst. Editor; Bobby Pope, Asst. Circulation Manager.

Second row: Joan Fee, Photo Editor; Billy Berley, Art Editor; Gilda Cromer, Club Editor; L. B. Anderson, Jr., Sports Editor; Grace Cromer, Circulation Manager; Mitchell Rabb, Asst. Sports Editor; Miss Gertrude Thomas, Sponsor.

## Future Teachers



First row, left to right: Thomas Fuller, Vice President; Mary Anne Douglas, President; Anne Turner, Secretary; Horace Stewart, Treasurer;  
Second row: Wilma Traylor, Claudette Dickerson, Betty Hood, Mary Boulware, Miss Gertrude Thomas, Sponsor; Blair Baldwin, Mary Ross Robinson.





First row, left to right: H. Stewart, C. Boulware, J. Robinson, F. Long, M. R. Robinson, T. Fuller, C. Miller, R. Rawls.

Second row: P. Ragsdale, L. Yongue, J. Fee, E. Robinson, T. Burley, M. A. Douglas, H. McMeekin, B. Burley, W. Traylor.

## Glee Club



First row, left to right: Hood, Brown, Martin, Stevenson, Douglas, Boulware, Dickerson, Hood, Holcumb, Blair, Doolittle, Doolittle, Rawls, Doolittle.

Second row: Glover, Wilson, Turner, Doolittle, Faulkner, Berley, Tamer, Clowney, Boulware, Traylor, Douglas, Goodlette, Shirley, Reese.

Third row: Mrs. Drafts, Faulkner, Long, Lindler, Dickerson, Robinson, Yongue, Fee, Miller, Parker, Shirley, Cromer, Owens, Cromer.



## F.F.A.



Earl Wilkes, Charles McLendon, Thomas Fuller, Billy Berley, Bobby Pope, Jack Ramsey, Gene Anderson, Adam Mayer, Bobby Icard, Earl Glymph, David Cromer, Edward Berley, Wallace Douglas, Horace Stewart, Hubert Brice, Raymond Smith, Larry Blair, Blair Baldwin, L. B. Anderson, John Owens, Ray Weaver, Mitchell Rabb, Lynn Glover, Billy Lindler, William Turner, Lawrence Lever, Mr. R. R. Foster.

## J.H.A.



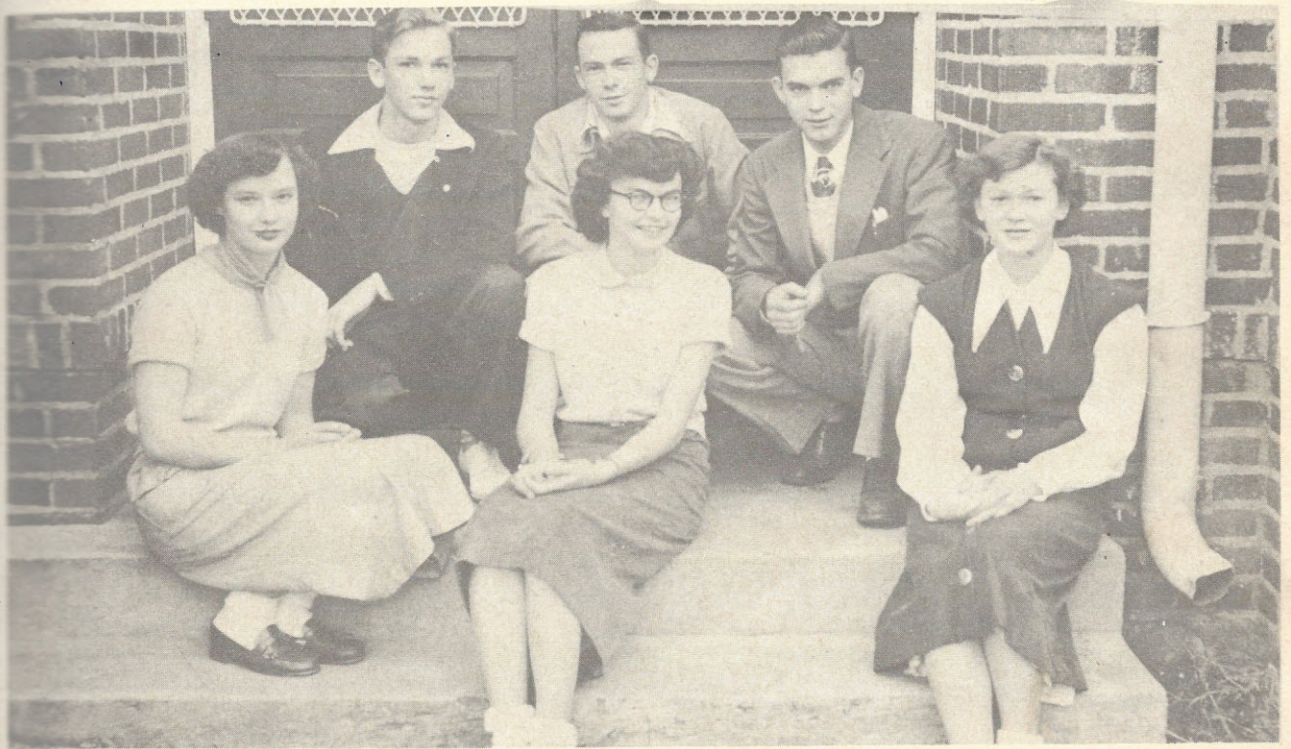
Sylvia Reese, Sandra Brown, Peggy Hood, Anne Martin, Polly Doolittle, Molly Doolittle, Francis Long, Josephine Doolittle, Mary Boulware, Mamie Faulkner, Jane Clowney, Betty Jean Glover, Jessie Wilson, Mary Ross Robinson, Miss Doris Jo Campbell.



# 4-H Club



## Officers



President.....Claudette Dickerson - Bobby Pope  
Vice-President..... Wilma Traylor - L. B. Anderson  
Secretary & Treasurer..... Grace Cromer - Horace Stewart



## Cheerleaders



CLAUDETTE DICKERSON

ANN TURNER

ROBERT STEWART

BETTY ANN HOOD (Chief Cheerleader)

## Homecoming Queen



Left to right: Mary Ann Douglas, attendant; Betty Hood, Queen; Mary Ross Robinson, attendant; Betty Scott Frazier, Crown-bearer.



# Basketball Teams



M. Douglas, W. Traylor, S. Doolittle, M. Boulware, M. Owens, J. Clowney, M. Faulkner, O. Faulkner, F. Long, L. Yongue, C. Miller, M. Parkner, M. Robinson, Coach Stevenson.



L. B. Anderson, C. McLendon, H. McMeekin, L. Blair, M. Lindler, J. Robinson, J. Owens, B. Baldwin, R. Weaver, B. Burley, P. Ragsdale, E. Florence, B. Lindler, Mgrs. M. Rabb, H. Stewart, Coach Stevenson. (not pictured: R. Tanner).



# Boys' Baseball Teams



## Block "M" Club

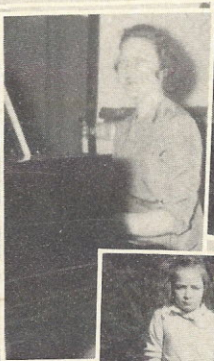


## Officers

President.....L. B. Anderson  
 Vice-President.....Margaret Parker  
 Secretary-Treasurer.....Claudette Dickerson



# Snap Shots





# Snap Shots







SALUTATORIAN

Betty Hood



D. A. R. CITIZEN

Gilda Cromer



VALEDICTORIAN  
and  
MISS HI MISS

Mary Ann Douglas



HISTORIAN

Mack Lindlon



SALUTATORIAN

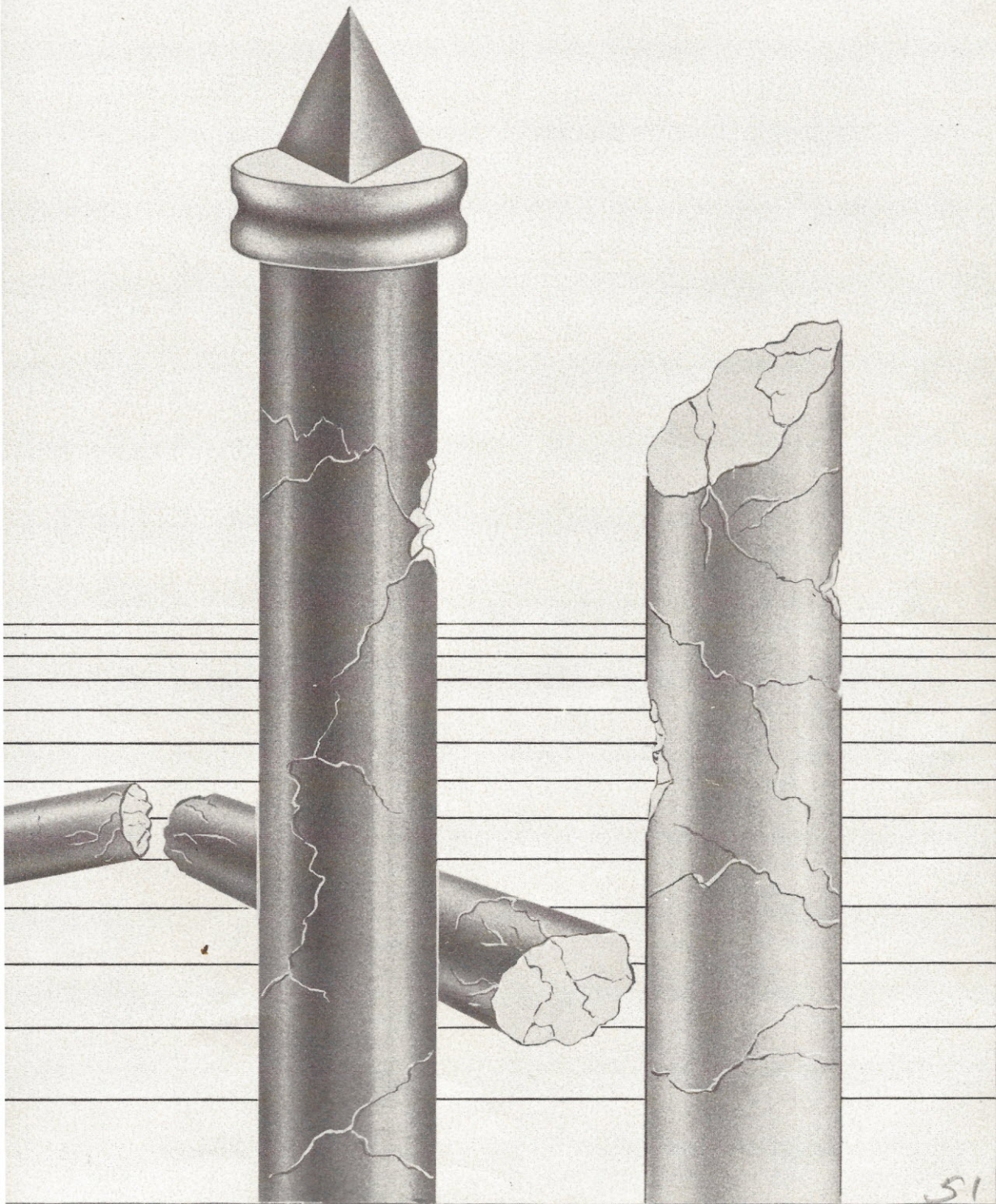
Hayne McMeekin







# ADVERTISING









**FAIRFIELD OIL CO.**

GOOD GULF GAS

"THERE'S A DEALER NEAR YOU"

WINNSBORO, S. C.

**McLEOD'S ESSO STATION**

GAS - OIL - TIRES - BATTERIES

SOUTH CONGRESS ST.

WINNSBORO, S. C.

**DOTY-TRUCK & TRACTOR CO.**

FARMALL TRUCKS - TRACTORS  
AND EQUIPMENT

WINNSBORO, S. C.

**LOMINICK'S DRUG STORE  
AND  
PROFESSIONAL DRUG STORE**

DEPENDABLE DRUGS

NEWBERRY, S. C.

**FAIRFIELD MOTOR PARTS,  
INC.**

U. S. ROYAL TIRES

WINNSBORO, S. C.

**A. E. DAVIS**

WINNSBORO, S. C.

SHOP AT

**MONTICELLO MERCANTILE COMPANY**

A. H. MCMEEKIN

MONTICELLO

SOUTH CAROLINA

**B. B. MARTIN**

GENERAL MERCHANDISE

MONTICELLO

**BUS TERMINAL GRILL**

SANDWICHES-LUNCH-SHORT ORDERS

WESTERN UNION

K. T. GLADDEN

READ

**THE NEWS AND HERALD**

FAIRFIELD COUNTY WEEKLY

WINNSBORO, S. C.

**JOHNSON BUICK CO.**

WINNSBORO, S. C.



REID LONG

STROTHER, S. C.

ROBINSON'S INC.

"BETTER STORES FOR WOMEN"

CHESTER, S. C.

COMPLIMENTS  
OF

**Belk's**

SHOES-HATS-DRY GOODS-CLOTHING

WINNSBORO

SOUTH CAROLINA

W. L. BURLEY

STROTHER

PROPST'S LADIES SHOP

"WHERE MOST EVERYBODY SHOPS"

WINNSBORO

L. C. HARDY, JEWELER

WINNSBORO, S. C.

108 S. CONGRESS ST.

THE TRIANGLE RESTAURANT

"WHEN IN WINNSBORO STOP  
AT THE TRIANGEL"

**United States Rubber Co.**

WHERE FIRST CLASS PEOPLE

MAKE FIRST CLASS PRODUCTS

WINNSBORO MILLS

WINNSBORO, S. C.



U. G. Des PORTES COMPANY

PHONE 325

WINNSBORO, S. C.

SUNRISE AUTO SUPPLY CO.

JOBBERs - DISTRIBUTORS

NEWBERRY, S. C.

POPE'S  
CREDIT JEWELERS

NEXT DOOR TO M. & P. BANK  
PHONE 6931

WINNSBORO

S.C.

COOPER FURNITURE CO.

"HOME OF BETTER VALUES"

WINNSBORO

PHONE 223

## Frazier-Coleman Motors Inc.

DODGE TRUCKS

DODGE

PLYMOUTH

SALES AND SERVICE

FIRESTONE TIRES

CHAIN SAWS

WINNSBORO, S. C.

WINNSBORO PETROLEUM  
COMPANY, INC.

SHELL PRODUCTS

WINNSBORO, S. C.

B. C. MOORE & SONS

NEWBERRY, S. C.

BUY FROM MOORE AND SAVE

MORE

RUFF MOTOR CO.

YOUR FORD DEALER

WINNSBORO, S. C.

FLOWER AND GIFT SHOP

WINNSBORO, S. C.

## Merchants' & Planters' Bank

SAFE, SOUND AND SANE

WINNSBORO, S. C.



BLAIR QUARRIES, INC.

BLAIR, SOUTH CAROLINA

BANK  
OF  
FAIRFIELD

STRENGTH-SAFETY-SERVICE

CONGRATULATIONS

SENIORS

CAROLINA FURNITURE CO.

HAROLD DOUGLAS, JR.

G. E. APPLIANCES & FURNITURE  
WINNSBORO, S. C.

FAIRFIELD LAUNDRY AND  
CLEANERS

PHONE 224

E. WASHINGTON ST. WINNSBORO

PROPST'S FLORIST

WINNSBORO

McMASTER AND COLONIAL DRUG

WINNSBORO

WINNSBORO VENEER COMPANY

VENEER PLYWOOD

WINNSBORO

SOUTH CAROLINA

PALMETTO FROZEN FOODS

HOME OF MARTINS' SAUSAGE  
WINNSBORO  
SOUTH CAROLINA

WINNSBORO MOTOR SALES  
CO.

CHEVROLET  
OLDSMOBILE

WINNSBORO

S. C.

POPE'S ESSO STATION

GAS - OIL - LUBRICATING

WINNSBORO

SOUTH CAROLINA



*University*

**SUPPLY and EQUIPMENT**

**COMPANY**

**6001 EAST ROSEDALE  
FORT WORTH, TEXAS**

**USECO**

**UNIVERSITY - SUPPLY - & EQUIPMENT CO.**

**Publishers of  
this Annual**

**Experience...not an Experiment**

























SCHOOL  
ZONE





UNIVERSITY SUPPLY & EQUIP. CO.  
725 NORTH TEXAS