

*Best wishes and good luck.
Marion E. Stevenson*



SUPERINTENDENT
Marion E. Stevenson

Administration And Faculty



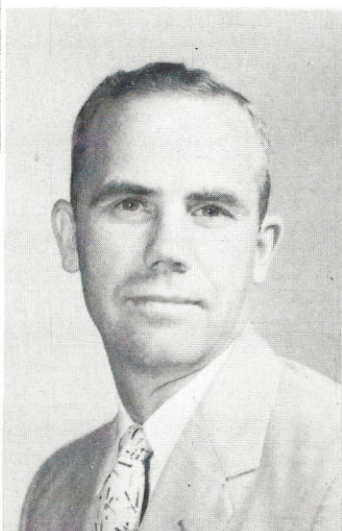
PRINCIPAL
Harold L. Saine

AGRICULTURE
R. R. Foster



COMMERCE
Mrs. J. M. Rawlinson

*sincere good wishes
Sue J. Rawlinson*



SCIENCE & MATH
Miss Kittie Lee Steele



MUSIC
Miss Martha E. Coleman
(Not pictured)



ENGLISH & FRENCH
Mrs. Myrtle H. Wilkes

*With best wishes
to a fine person
Myrtle Wilkes*

HOME ECONOMICS
Mrs. Susan Byrd
(Not pictured)