



*Administration
and
Faculty*

SUPERINTENDENT
Marion E. Stevenson



PRINCIPAL
Sam M. Botts



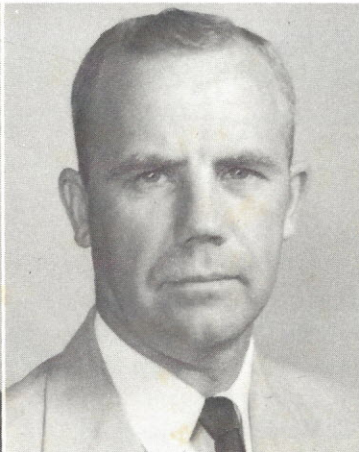
ENGLISH and FRENCH
Myrtle H. Wilkes



COMMERCE
Mrs. J. M. Rawlinson



SCIENCE and MATH
Miss Kitty Lee Steele



AGRICULTURE
R. R. Foster



MUSIC
Mrs. Leonard Gardner