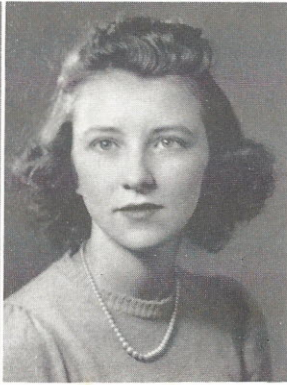


DAVID AMICK AIKEN
Band 1, 2, 3; Football 2, 3; Boxing 1.

JOE AMEEN
Latin Club 1, 2; French Club 4; Band 2, 3, 4.

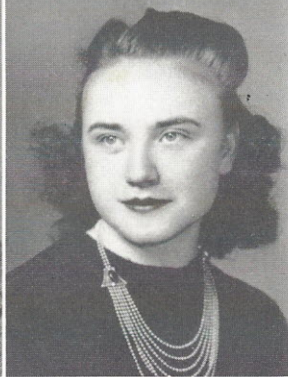
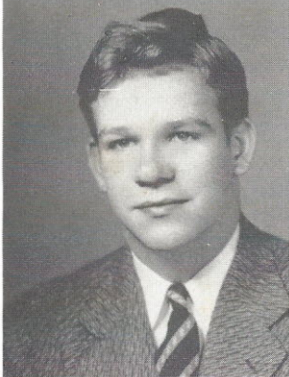
MARTHA BOLICK
Transfer from Monticello.

MARY BOULWARE
Beta Club 4; Latin Club 1, 2; French Club 3; Glee Club 1, 3, 4; Band 2, 3; Camera Club 4; J. H. A. 2; Class Play 3, 4; Historian *Tusitala*.



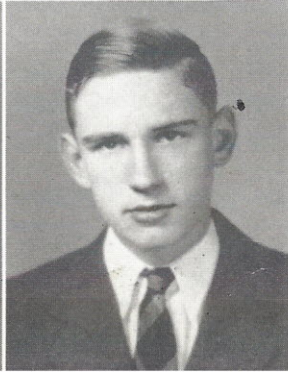
LUCY BEVERLY BRATTON
Latin Club 1, 2; French Club 3; Glee Club 1, 2, 3, 4; J. H. A. 2; Basketball 1, 2, 3.

ISABEL DUBOSE BRATTON
Latin Club 1, 2; French Club 3; Glee Club 1, 2, 3, 4; J. H. A. 2; Basketball 1, 2, 3, 4, Manager 4; Most Dependable 4; Assistant Business Manager *Tusitala*.



DEWEY GLENN CARTER
Band 1, 2, 3, 4; Camera Club 4; Basketball 4; Football 1, 2, 3, 4, Captain 4; Boxing Manager 2, 3; Class Play 3, 4; Most Athletic 4.

EVELYN CASSIDY
French Club 3; Glee Club 1, 2; J. H. A. 3.



MARTHA ELIZABETH CATHCART
Latin Club 1; J. H. A. 3.

DAVE CRAWFORD
Latin Club 1, 2; Band 1; Camera Club 3; Football 3, 4; Class Play 4.

