

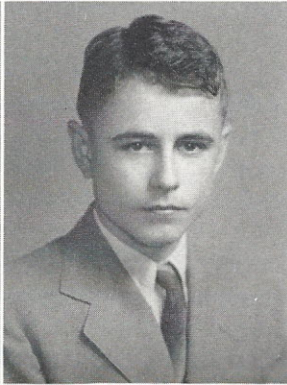
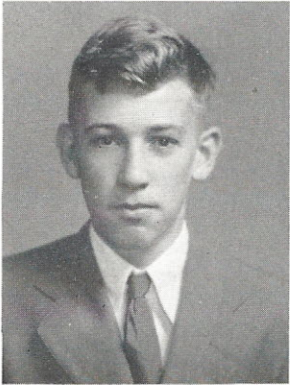


IMOGENE POPE

Latin Club, 1, 2; French Club, 4.

MARY LOUISE PORTER

Transfer from Newberry; Glee Club, 4.



WILLIAM ROBERTSON RABB

Latin Club, 1, 2; Band, 1; Football Manager, 3, 4;
Baseball, 3, 4.

HAROLD G. RISH

Transfer from Greenbrier; Boxing, 3.

LEONARD RUTLAND

Football, 3, 4; Basketball, 3, 4; Baseball, 3, 4.

DORIS NELL SHAW

J. H. A., 2; Basketball, 3, 4; Typing Staff TUS-
TALA, 4; Glee Club, 1, 4.

B. E. SITTON, JR.

Football, 2, 4; Baseball, 2; Boxing, 2; Camera Club,
3; Class Play, 3.

