

MITTIE STEVENSON

Latin Club, 1, 2; Beta Club, 3, 4, Secretary, 4;
French Club, 4; Class Play, 2; Class Vice-President,
2; Assistant Business Manager TUSITALA, 4; Basket-
ball Squad, 1, 2; Best All Around, 4.

REBEKAH KENNEDY TURNER

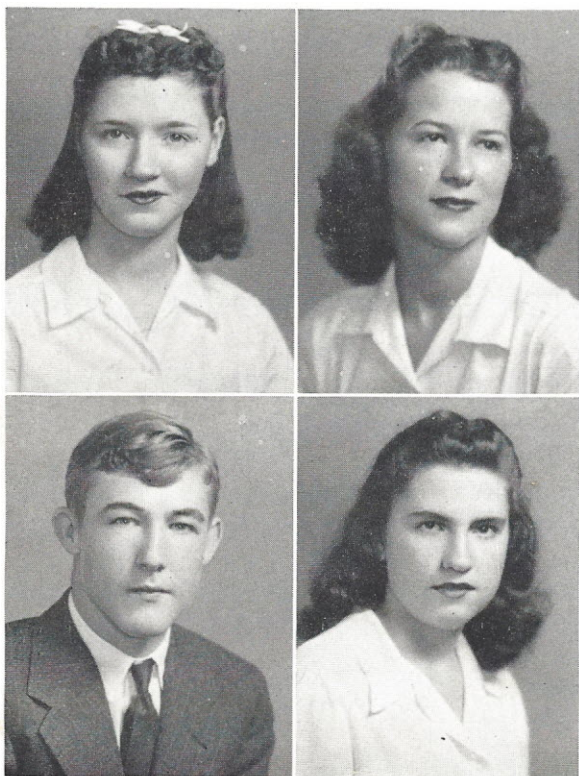
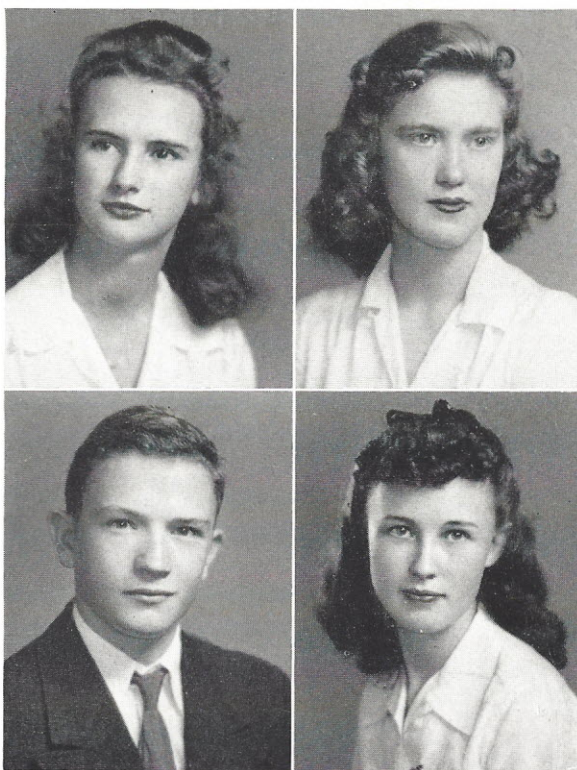
Latin Club, 1, 2, 3; French Club, 4; Beta Club, 3, 4;
Basketball, 1, 2; Historian TUSITALA, 4; Most Intel-
lectual, 4.

C. T. TRAYLOR

Transfer from Blackstock.

ANNIE LOUISE WALKER

J. H. A., 2; Glee Club, 4; Typing Staff TUSITALA,
4; Art Staff TUSITALA, 4.



MARGARET CLARA WALLING

J. H. A., 2.

RUTH WALSH

Basketball, 1, 2, 3, 4; Beta Club, 3, 4; J. H. A., 2;
Glee Club, 4; Class Vice-President, 1; Class Treas-
urer, 4; Typing Staff TUSITALA, 3, 4; Most Ath-
letic, 4.

OSBORNE E. WELLS, JR.

Basketball, 3, 4; Beta Club, 3, 4; Class Vice-Presi-
dent, 4; Baseball, 3, 4.

MARGIE WYLIE

Latin Club, 1, 2; Glee Club, 2, 3, 4; French Club,
4; Secretary and Treasurer, 4; Beta Club, 3, 4; Treas-
urer, 4; Basketball Squad, 2, 3; Assistant Editor-in-
Chief TUSITALA, 4; Class Play, 3.

