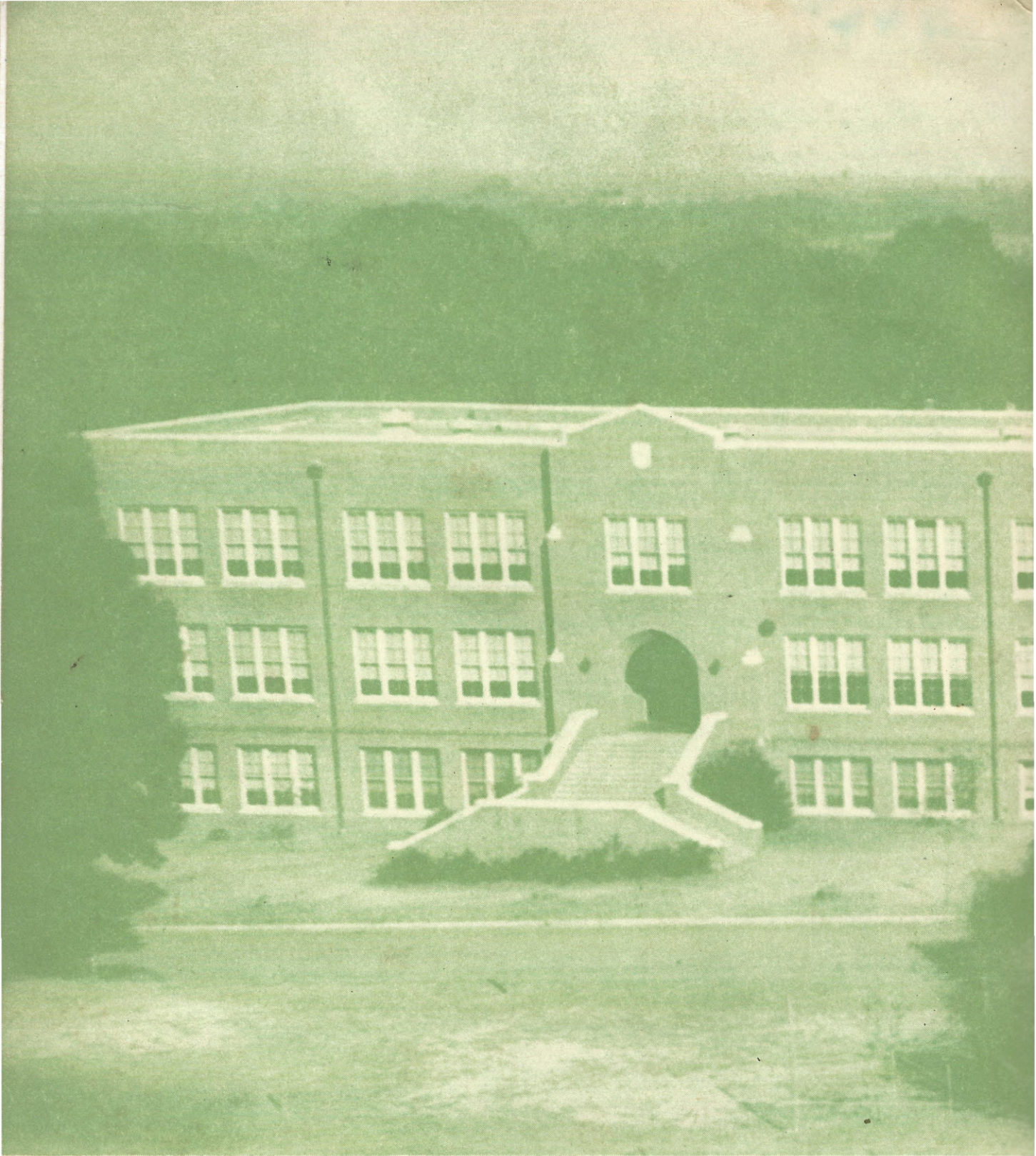


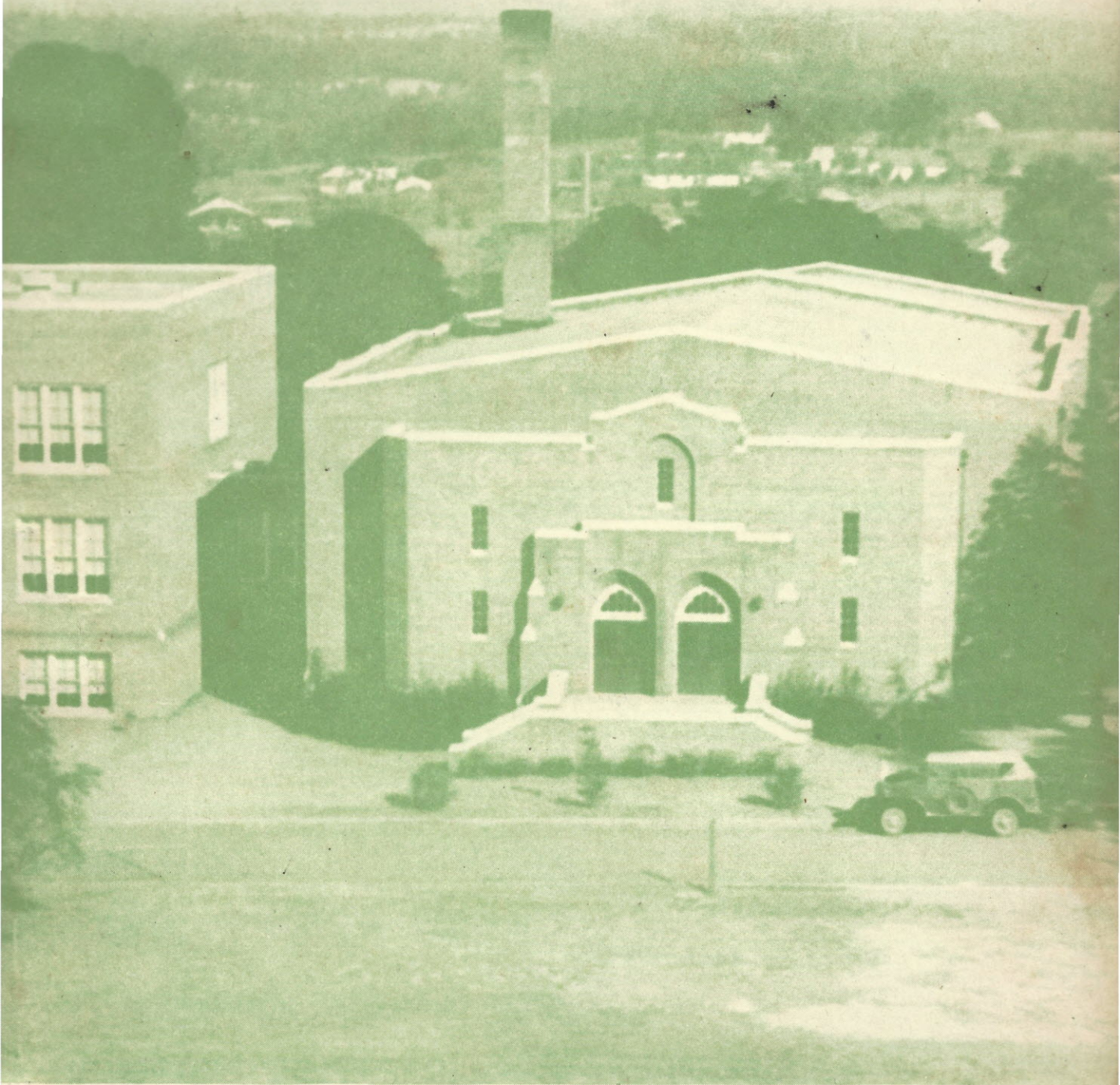


TUSITALA

1942



*On the hills of dear old Fairfield
Proudly stands our school;
All hail to thee, our Alma Mater,
Conquer and prevail.*



*Loyal students ever loving
Honor and obey,
All hail to thee, our Alma Mater,
Mount Zion, all hail!*

Tusitala



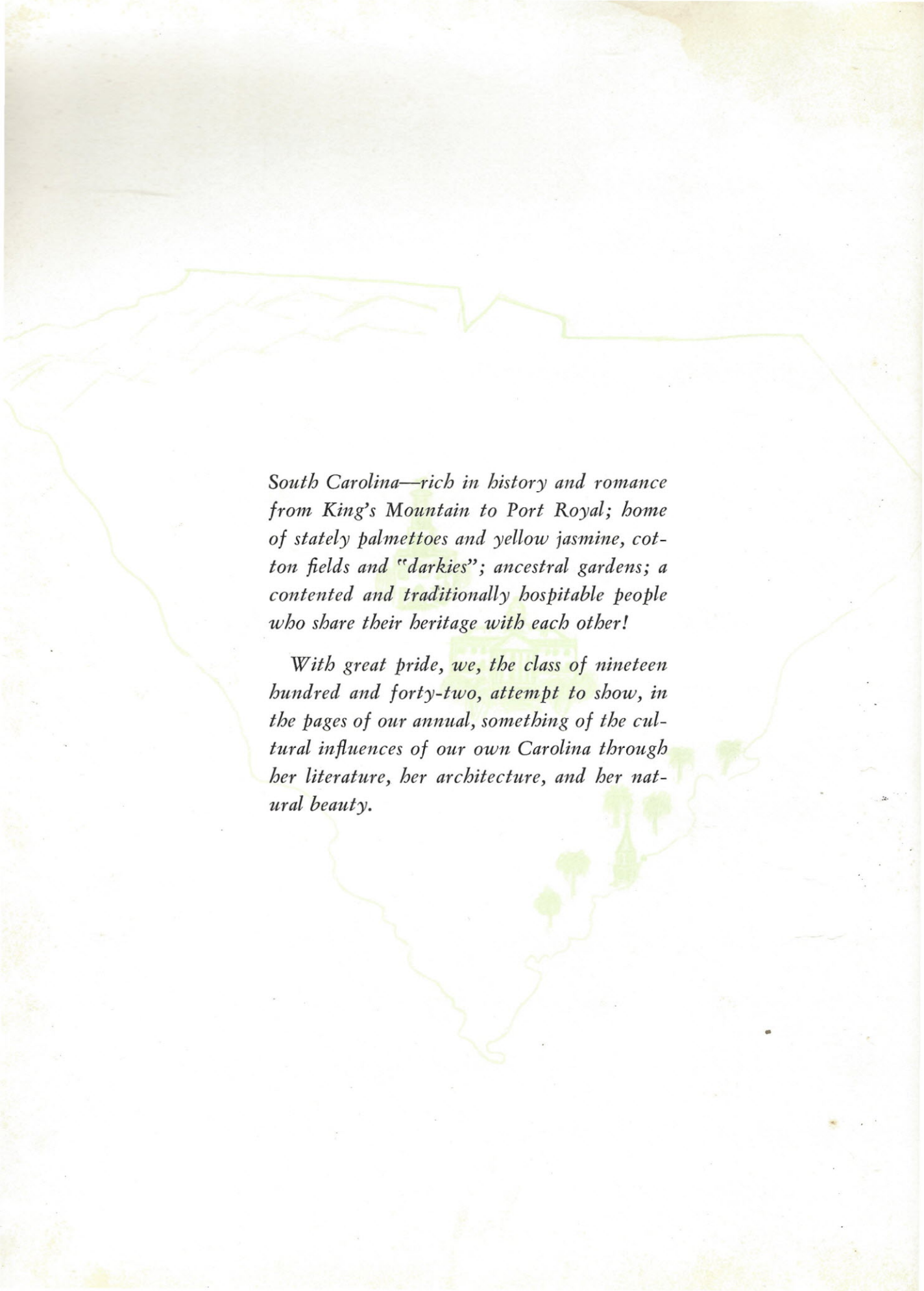
"Hallowed by gathered beauty of the years."

"Youth"—Archibald Rutledge

Saint Michael's—Charleston, South Carolina

PUBLISHED BY THE CLASS OF
NINETEEN HUNDRED AND
FORTY-TWO FOR THE
STUDENT BODY OF
MOUNT ZION INSTITUTE,
WINNSBORO, S. C.

Lusitana



South Carolina—rich in history and romance from King's Mountain to Port Royal; home of stately palmettoes and yellow jasmine, cotton fields and "darkies"; ancestral gardens; a contented and traditionally hospitable people who share their heritage with each other!

With great pride, we, the class of nineteen hundred and forty-two, attempt to show, in the pages of our annual, something of the cultural influences of our own Carolina through her literature, her architecture, and her natural beauty.

The background of the page features a very faint, light green illustration of a two-story house with a gabled roof and a front porch. To the right of the house, there is a faint outline of a vintage car. The overall tone is soft and nostalgic.

To Our Parents

*Because of their unselfish devotion to us,
their unshaken belief in us,
their aspirations for us,*

*we, the class of nineteen hundred and
forty-two, affectionately dedicate this,
the second volume of TUSITALA, to the
best friends we've ever known—our
Mothers and our Dads!*



GROVER FOLSOM PATTON

OUR SUPERINTENDENT





ROBERT PERRY WILDER

PRINCIPAL AND BOARD OF TRUSTEES



DR. C. S. McCANTS, *Chairman and Treasurer* (center)

A. E. DAVIS

T. K. McDONALD

RHETT SANDERS (not in picture)

R. M. FREW

MRS. T. H. KETCHIN

M. H. DOTY





MISS PATTIE PARKER
English and Dramatics

MRS. H. E. CALDWELL
English and Latin

MISS MARION RIDGEWAY
English and French

FACULTY

MISS IRMA BERRY
Mathematics

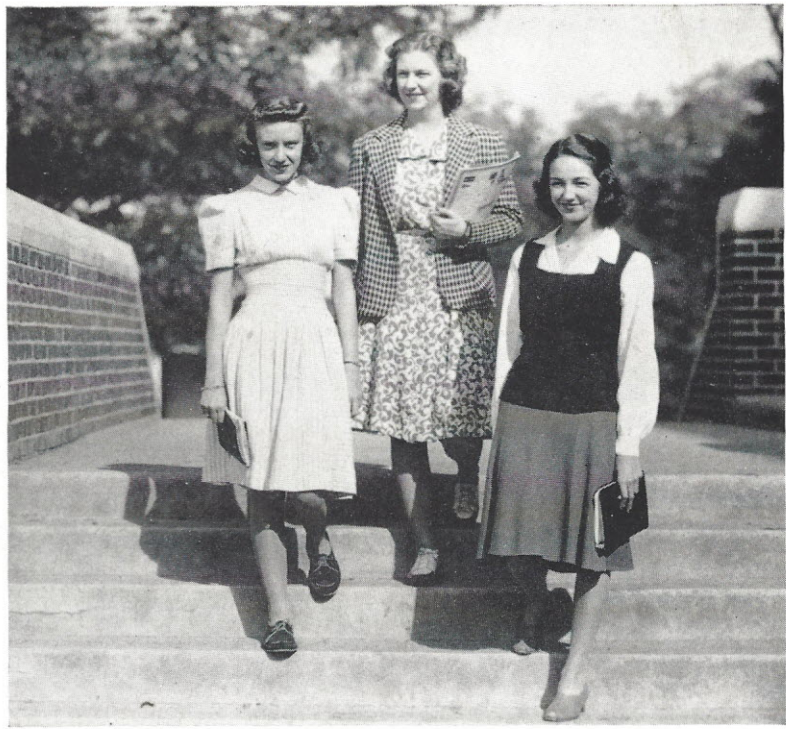
MRS. JOHN McSWAIN
Commercial Course



MISS SARA SYMMES
*Biology and Physical
Education*

MISS HELEN RILEY
Science and History

MISS MAREE OWENS
Home Economics



FACULTY

MISS ETHEL BRUCE
Social Science

MISS MARY GREY WITHERS
Librarian



VIEWS



Main Street



Court House and Town Clock



Community House





Classes

*"This portal marks a realm unruled by time
For here foregather men of every age;—"
"Legend for Library Door"—Dr. Chapman Milling*

Sword Gates—Charleston, South Carolina



SENIOR CLASS OFFICERS

OTIS AMEEN	<i>President</i>
OSBORNE WELLS	<i>Vice-President</i>
WESLEY BRAZIEL	<i>Secretary</i>
RUTH WALSH	<i>Treasurer</i>

CLASS HISTORY

All hail class of '42! Our goals have been reached, those mountains we sought to climb become as hills in retrospect; let us view the course which we have taken.

Four short years ago we entered high school, proud but somewhat awed by it all. Mere "readin' and writin' and 'rithmetic" faded into insignificance when compared with freshman Latin and Algebra.

After three months vacation we returned as the "wise guys" of the school. This year we began to find our bearings and take our real place among the students. School activities had begun to have a definite meaning for us, sophomores.

And then perhaps the happiest year of all high school dawned. Enough behind to feel secure—enough ahead to dispel any note of gloom. This year we were upper-classmen, accepting our pledges as Beta Club members, presenting our junior play—"Here Comes Charlie," and making plans for the glorious night when we should be hosts to the Senior Class.

And then, before we had fully realized it, we were seniors. We had begun to see "that labor conquers all things." One by one we enjoyed our Senior Class activities: the giving of our play, being guests instead of hosts at the Junior-Senior Banquet, publishing our annual—TUSITALA.

All these things have come and gone. Those of us who have been faithful to the end begin to realize that our work has not been a mere dream.

REBEKAH TURNER.



WILLIAM OTIS AMEEN

Beta Club, 4; Latin Club, 1, 2; Baseball, 2, 3, 4;
Class President, 4.

JOHN BECKHAM

Class Play, 3; Band, 1; Joke Editor TUSITALA, 4;
Boxing 1; Football Manager, 1; Latin Club, 1, 2;
Football, 4.

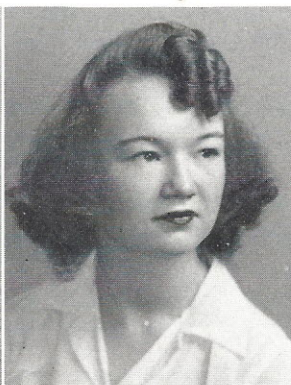
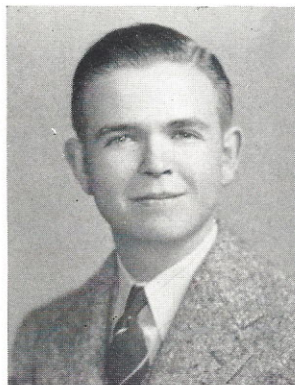
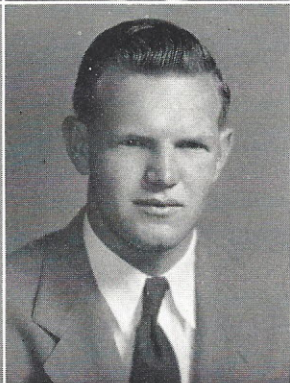
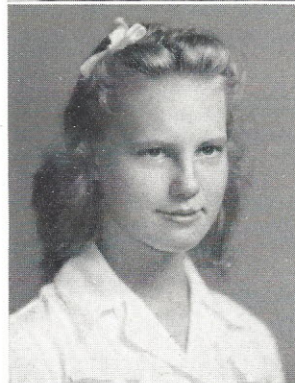
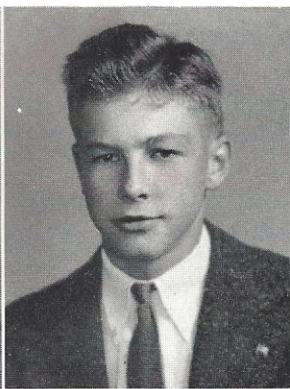
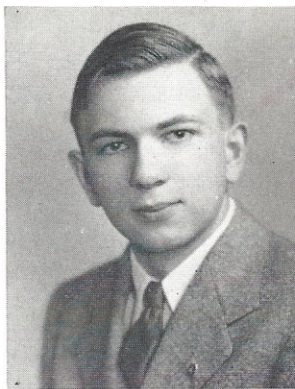
JESSIE CAROL BERTHOLD

President J. H. A., 2; Beta Club, 3, 4; Typing Staff
TUSITALA, 3; Literary Editor TUSITALA, 4; Assistant
Stage Manager Class Play, 3; Most Dependable, 4.

RANDOLPH BRATTON

(Withdrawn)

Football, 2, 3, 4; Class Treasurer, 3; Best All Around,
3, 4; Baseball, 3, 4; Boxing, 2; Boxing Manager, 3;
Athletic Editor TUSITALA, 4; Stage Manager Class
Play, 3.

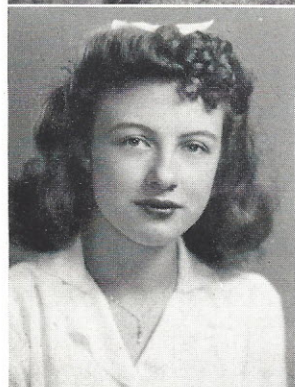


JAMES WESLEY BRAZIEL, JR.

Class Secretary, 1, 4; Beta Club, 3; Football, 4;
Basketball, 3, 4; Most Dependable, 4; Circulation
Manager TUSITALA, 4.

MILDRED LOUISE BRICE

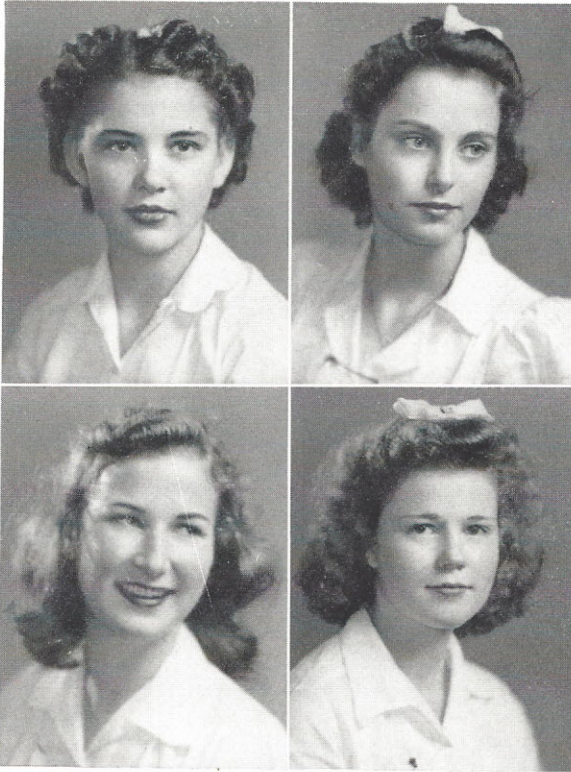
Latin Club, 1, 2.



JANE BROOME

J. H. A., 2.





NANCY JANE BRYCE

RUTH SAVILLE CATHCART

Beta Club, 3, 4; Glee Club, 3.

LILLIE MAE COOPER

(Withdrawn)

J. H. A., 2; Basketball, 2, 3, 4; Glee Club, 4; Class Play, 3; Art Editor TUSITALA, 4; Cheer Leader, 4; Most Talented, 4.

TWYLIA DORIS CROSLAND

(Withdrawn)

ROBERT THOMAS DOUGLASS, JR.

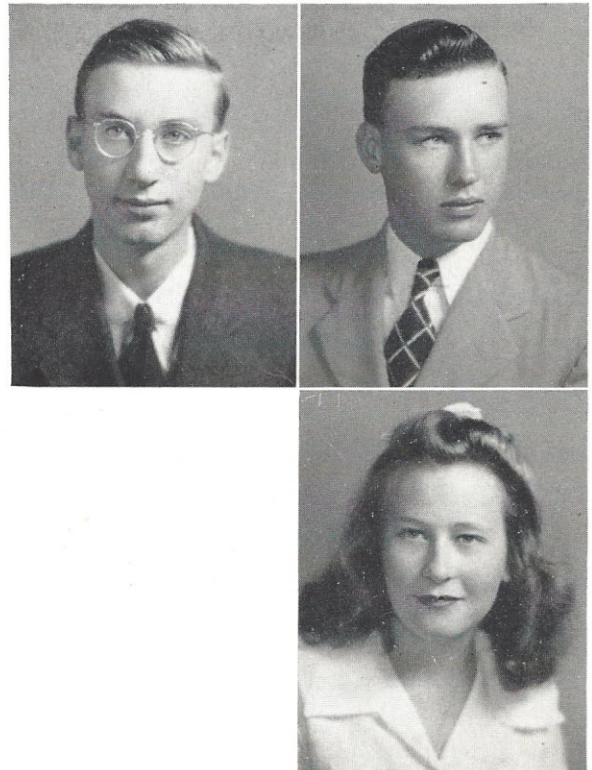
Latin Club, 1, 2; Beta Club, 4; Class Play, 3; French Club, 4.

LESLIE DOUGLAS

Transfer from Monticello.

ETHEL MIRIAM DOUGLAS

Basketball, 3.

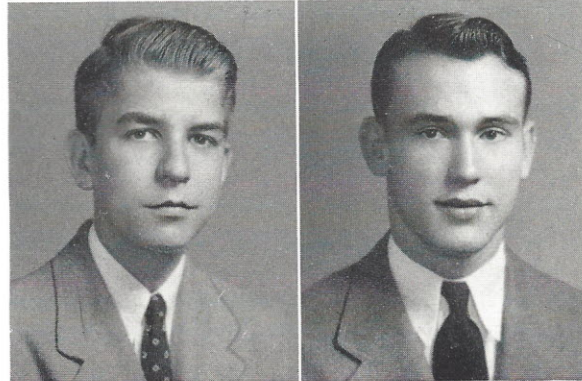
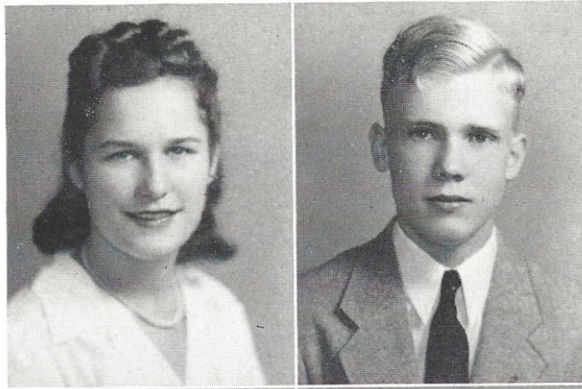


AUDREY SYLVIA ESTES

Secretary J. H. A., 2; Basketball, 2; Beta Club, 4; Typing Staff TUSITALA, 4; Glee Club, 4.

DICK FERGUSON

Latin Club, 1, 2, 3; Beta Club, 3, 4; Vice-President, 4; Class President, 3; Football, 3; Class Play, 3; Most Intellectual, 4.

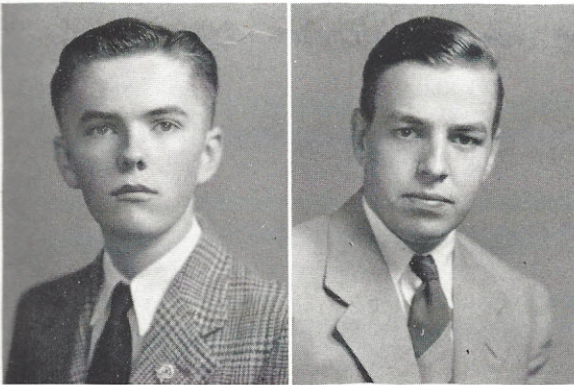


CHARLES FOSTER FREEMAN, JR.

Camera Club, 3; Cheerleader, 2; Baseball, 2.

RANDALL E. GRIFFIN, JR.

Camera Club, 2, 3; Football, 3, 4; Art Staff TUSITALA, 4; Basketball, 4; Baseball, 1, 2, 4; Class Play, 3; Boxing, 3; Assistant Stage Manager, 1, 2; Most Talented, 4.

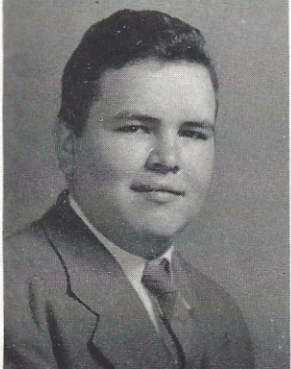


JOHN MEANS HARDEN, III

Latin Club, 1, 2; French Club, 4; Band, 1, 2, 3, 4; Beta Club, 4; Typing Staff TUSITALA, 4.

JOSEPH ALEXANDER HEUSTESS, JR.

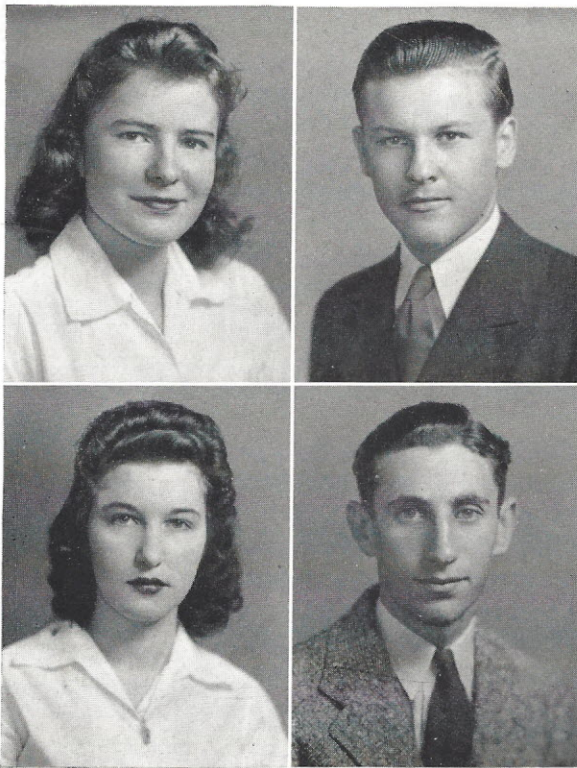
Basketball, 1, Manager, 3; Football, 2, 3, 4; French Club, 3.



WILLIAM HEUSTESS

Latin Club, 1, 2, 3, 4, Secretary, 2, 3; President, 4; Beta Club, 3, 4, President, 4; Class Vice-President, 3; Cheerleader, 4; Editor-in-Chief TUSITALA, 4; Class Play, 3; Most Popular, 4.





MARGARET HORNE

French Club, 4.

BENNIE HUDSON

HELEN ELOISE JOHNSON

J. H. A., 1; Latin Club, 1, 2.

HARRY LEVY

Football, 1, 2, 3, 4; Basketball, 2, 3, 4; Baseball, 2, 3;
Camera Club, 3; Most Athletic, 4.

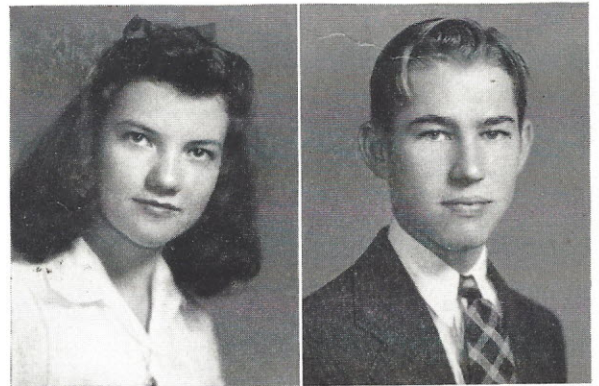
BERNICE VIRGINIA MATTOX

J. H. A., 2; Glee Club, 2; Class Play, 3.

JIMMIE McCLINTOCK

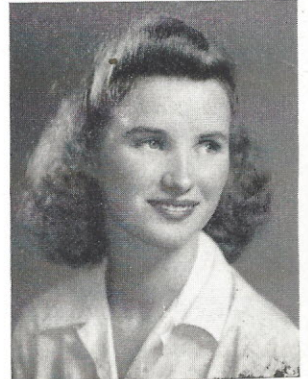
(Withdrawn)

Boxing, 2; Football, 2.



ELLERAINE McKAY

Basketball, 2; French Club, 4.



MARGARET McLENDON

Latin Club, 1, 2; Beta Club, 1, 2; French Club, 4.

CHRISTINE GOODING McMASTER

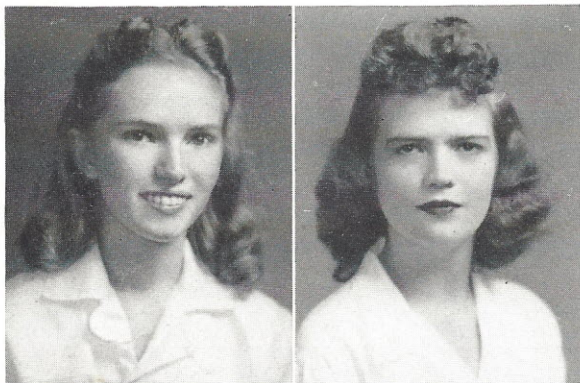
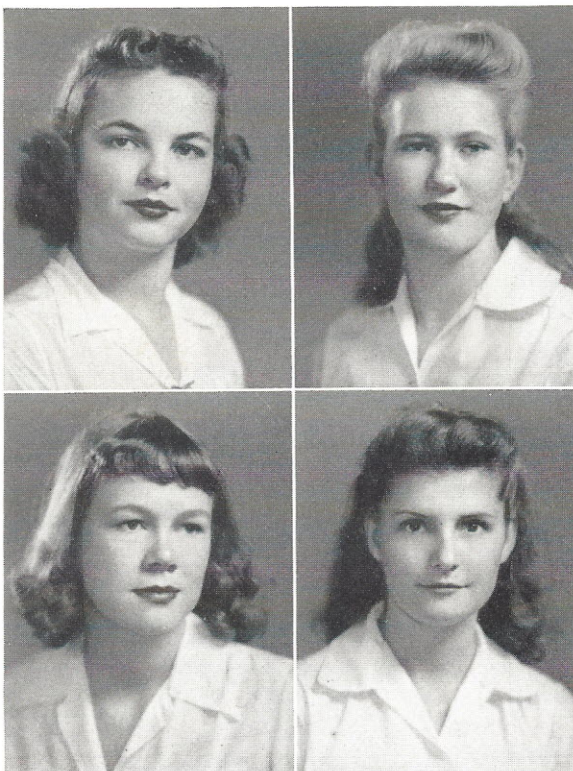
Latin Club, 1, 2; Stage Manager Class Play, 3; Beta Club, 4.

JEANNE McMASTER

Latin Club, 1, 2; French Club, 4, President, 4; Band, 4; Basketball, 1, 2, 4; Cheerleader, 4; Class Play, 3; Beta Club, 3, 4; Business Manager TUSITALA, 4; Band Secretary, 4; Most Popular, 4.

MILDRED EULALAH NEELEY

Basketball, 4; J. H. A., 2.



MARGARET ROSA PARK

Latin Club, 1, 2.

SARAH JANE PATRICK

Beta Club, 4; French Club, 4; Latin Club, 1, 2; Basketball, 1, 2; Glee Club, 2, 3, 4.

SARA PLYLER

Beta Club, 3, 4; French Club, 4.



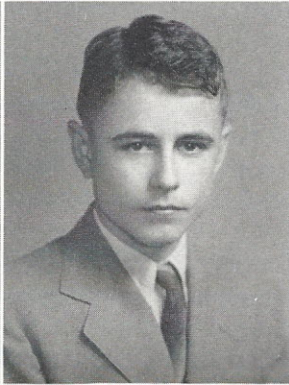
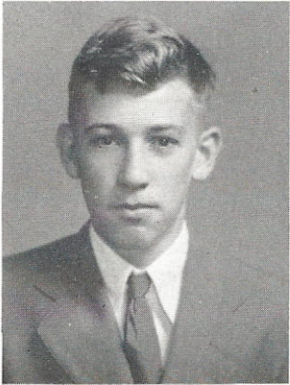


IMOGENE POPE

Latin Club, 1, 2; French Club, 4.

MARY LOUISE PORTER

Transfer from Newberry; Glee Club, 4.



WILLIAM ROBERTSON RABB

Latin Club, 1, 2; Band, 1; Football Manager, 3, 4;
Baseball, 3, 4.

HAROLD G. RISH

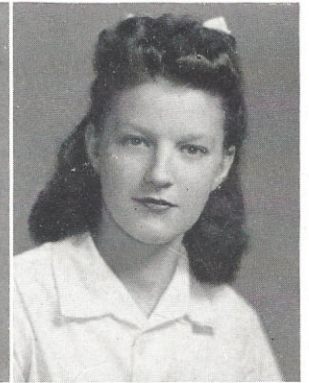
Transfer from Greenbrier; Boxing, 3.

LEONARD RUTLAND

Football, 3, 4; Basketball, 3, 4; Baseball, 3, 4.

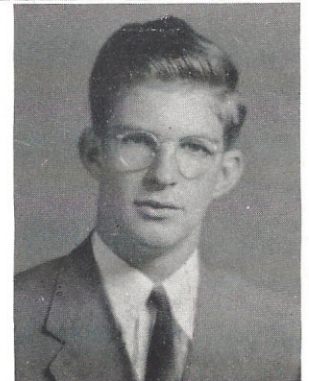
DORIS NELL SHAW

J. H. A., 2; Basketball, 3, 4; Typing Staff TUS-
TALA, 4; Glee Club, 1, 4.



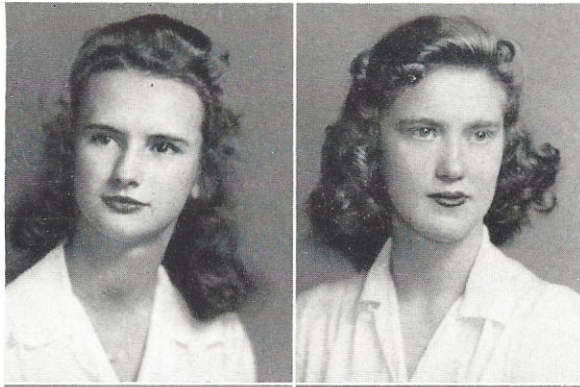
B. E. SITTON, JR.

Football, 2, 4; Baseball, 2; Boxing, 2; Camera Club,
3; Class Play, 3.



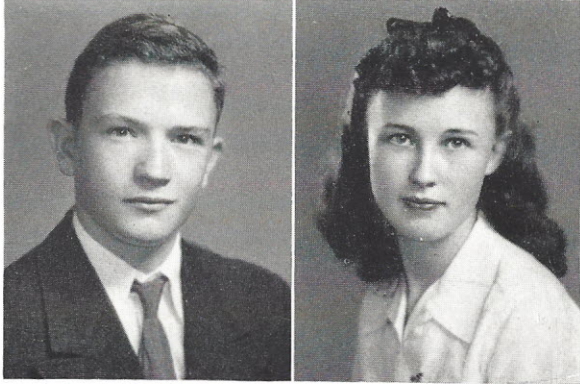
MITTIE STEVENSON

Latin Club, 1, 2; Beta Club, 3, 4, Secretary, 4; French Club, 4; Class Play, 2; Class Vice-President, 2; Assistant Business Manager TUSITALA, 4; Basketball Squad, 1, 2; Best All Around, 4.



REBEKAH KENNEDY TURNER

Latin Club, 1, 2, 3; French Club, 4; Beta Club, 3, 4; Basketball, 1, 2; Historian TUSITALA, 4; Most Intellectual, 4.

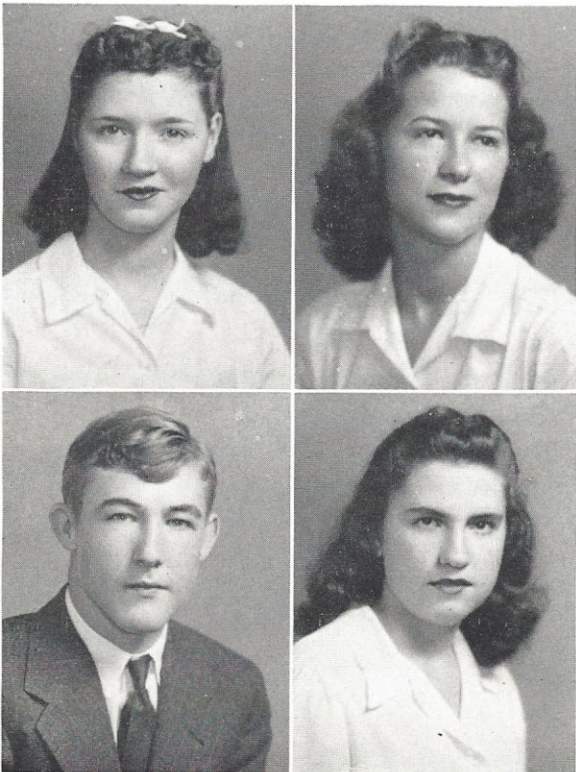


C. T. TRAYLOR

Transfer from Blackstock.

ANNIE LOUISE WALKER

J. H. A., 2; Glee Club, 4; Typing Staff TUSITALA, 4; Art Staff TUSITALA, 4.



MARGARET CLARA WALLING

J. H. A., 2.

RUTH WALSH

Basketball, 1, 2, 3, 4; Beta Club, 3, 4; J. H. A., 2; Glee Club, 4; Class Vice-President, 1; Class Treasurer, 4; Typing Staff TUSITALA, 3, 4; Most Athletic, 4.

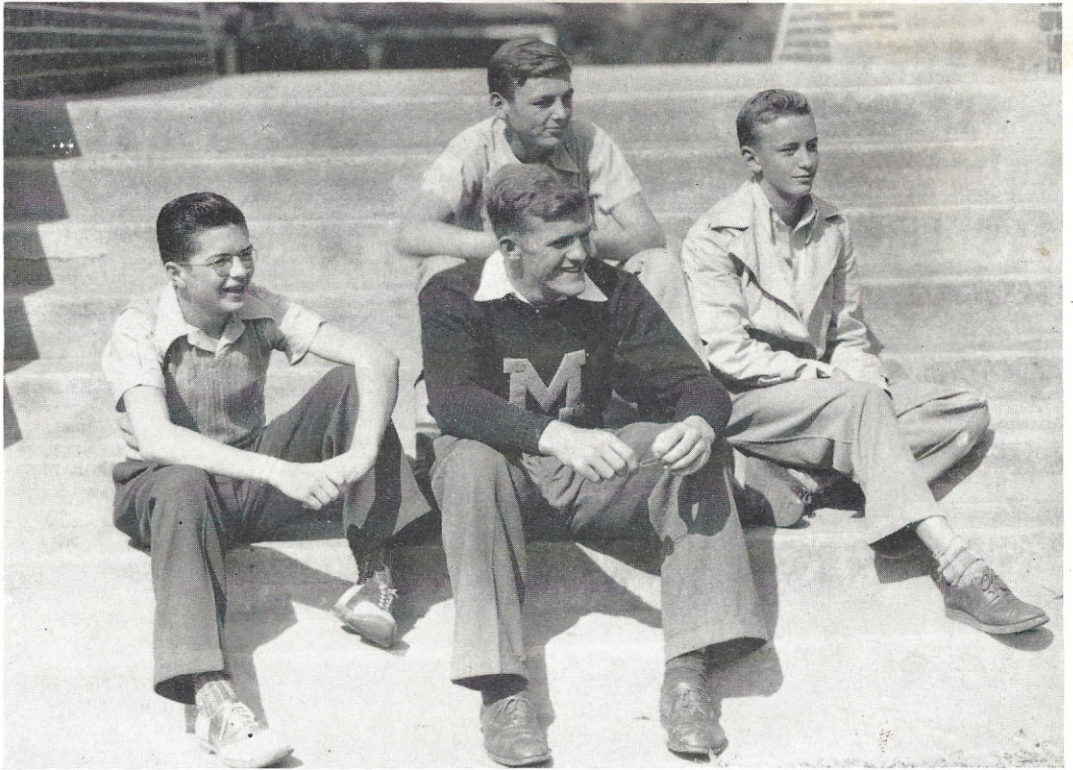
OSBORNE E. WELLS, JR.

Basketball, 3, 4; Beta Club, 3, 4; Class Vice-President, 4; Baseball, 3, 4.

MARGIE WYLIE

Latin Club, 1, 2; Glee Club, 2, 3, 4; French Club, 4; Secretary and Treasurer, 4; Beta Club, 3, 4; Treasurer, 4; Basketball Squad, 2, 3; Assistant Editor-in-Chief TUSITALA, 4; Class Play, 3.





JUNIOR CLASS OFFICERS

JACK ARNETTE	<i>President</i>
LINDSAY WYLIE	<i>Vice-President</i>
BILL SPIRES	<i>Secretary</i>
TALMADGE HAYNES	<i>Treasurer</i>

The principal activities of the Junior Class revolve around the Junior-Senior Banquet which is the high-light of the year. The various money-making projects begin in September as soon as the class elects officers. The outstanding event, other than the banquet for the seniors, is the Junior Play which takes place in early spring.





JUNIOR CLASS

ARNETTE, JACK
 BAGGOTT, BURNIDENE
 BOONE, GRADY
 BRABHAM, ANN M.
 BRANHAM, THELMA
 BRASWELL, MILDRED
 CENTER, KATHERINE
 CENTER, MIRIAM
 CROSLAND, ANN
 DARBY, ODELL
 DOVE, JUNIOR
 DRIGGERS, ELMER
 EDENFIELD, CHARLES
 ELLISON, KATE
 FLOYD, MAXINE
 FUNDERBURG, CAROLINE
 GOUDELOCK, BETTY
 GRESHAM, GAYNELLE

HALEY, EDNA
 HATCHELL, EDITH
 HAYNES, TAL
 HAYNES, JOHN
 HUDSON, VIRGINIA
 HUGHES, FOREST
 JACKSON, VIOLA
 JOHNSON, RALPH
 JONES, AUSTIN
 LEVINER, MARGARET
 McCLINTOCK, NINA
 McKAY, LORRAINE
 McMASTER, ELIZABETH
 McMASTER, NORVELLE
 McMASTER, RACHEL
 MERCER, ANNA
 MILLER, IRENE

NELSON, ELSIE
 PEARSON, DORIS
 PHILLIPS, BETTY JO
 PORTER, BILLY
 PULLEN, OSCAR
 RAGSDALE, BOB
 ROBERTSON, FRANCES
 SHARPE, RUTH
 SPIRES, BILL
 STEVENSON, ERLEEN
 THIGPEN, GENEVA
 TIMMS, FRANK
 TURNER, SARA
 WATERS, HAROLD
 WILKES, MARTIN
 WILLIAMS, JAMES
 WOODS, ETHEL
 WYLIE, LINDSAY





S O P H O M O R E C L A S S

AIKEN, MARSHALL
 ALLEN, WORTH
 ANDERSON, JOYCE
 BECKHAM, BILLY
 BENNETT, JEAN
 BERRY, W. C.
 BRADWELL, GUY
 BRANHAM, KATHLEEN
 BROWN, HELEN
 CARNELL, DORIS
 CATHCART, CHARLES
 CHERRY, TEDDY
 COLLINS, ALICE
 COOPER, VICTOR
 CRAWFORD, DAVID
 CRAWFORD, LILLY BELLE
 CRAWFORD, RETTA
 DAVIS, LUCY B.
 DesPORTES, BOBBY
 DOMINY, WALSTEEN
 DOTY, BILLY
 DOUGLAS, ED
 ESTES, BOBBY LEE
 FOWLER, CLARA BELLE

FREEMAN, MARIE
 GEORGE, HENDRIX
 GOODWIN, HORACE
 GOUDELOCK, ELLA V.
 GRESHAM, MILDRED
 HACKLE, ELDRED
 HALL, BETTY
 HICKS, BOBBY
 HOY, TOM
 HUTTO, HOMER
 JEFFCOAT, BILLY
 KIRKLAND, FREDERICA
 LEVY, EVA
 LOWE, DAVID
 MARTHES, CLAUDE
 MARTHES, ELOISE
 MATTOX, BETTY
 McCRIGHT, ELBERT
 McLENDON, KATHLEEN
 McMASTER, QUAY
 MILLER, PAT
 MORGAN, VIRGINIA
 MOLNAR, VIRGINIA

MORRIS, ELOISE
 NORMAN, HAMDY
 PADGETT, VIRGIL
 PARK, ARTHUR
 PATE, VIVIAN
 PITTMAN, MARY
 POPE, JOHN CARROLL
 PORTER, BOYD
 RAMSEY, LOUISE
 REYNOLDS, PETE
 RUTLEDGE, MARY BYRD
 SHAW, NATALIE
 SHEDD, GEORGE
 SIMS, MARGARET
 SMITH, J. C.
 SITTON, JACK
 SLATER, LOIS
 THIGPEN, RUTH
 TIMMS, EDWARD
 TRAYFOR, EARL
 TURNER, BOBBY
 TURNER, CARROLL
 WALKER, LEO
 WELCH, EARNESTINE



FRESHMAN CLASS

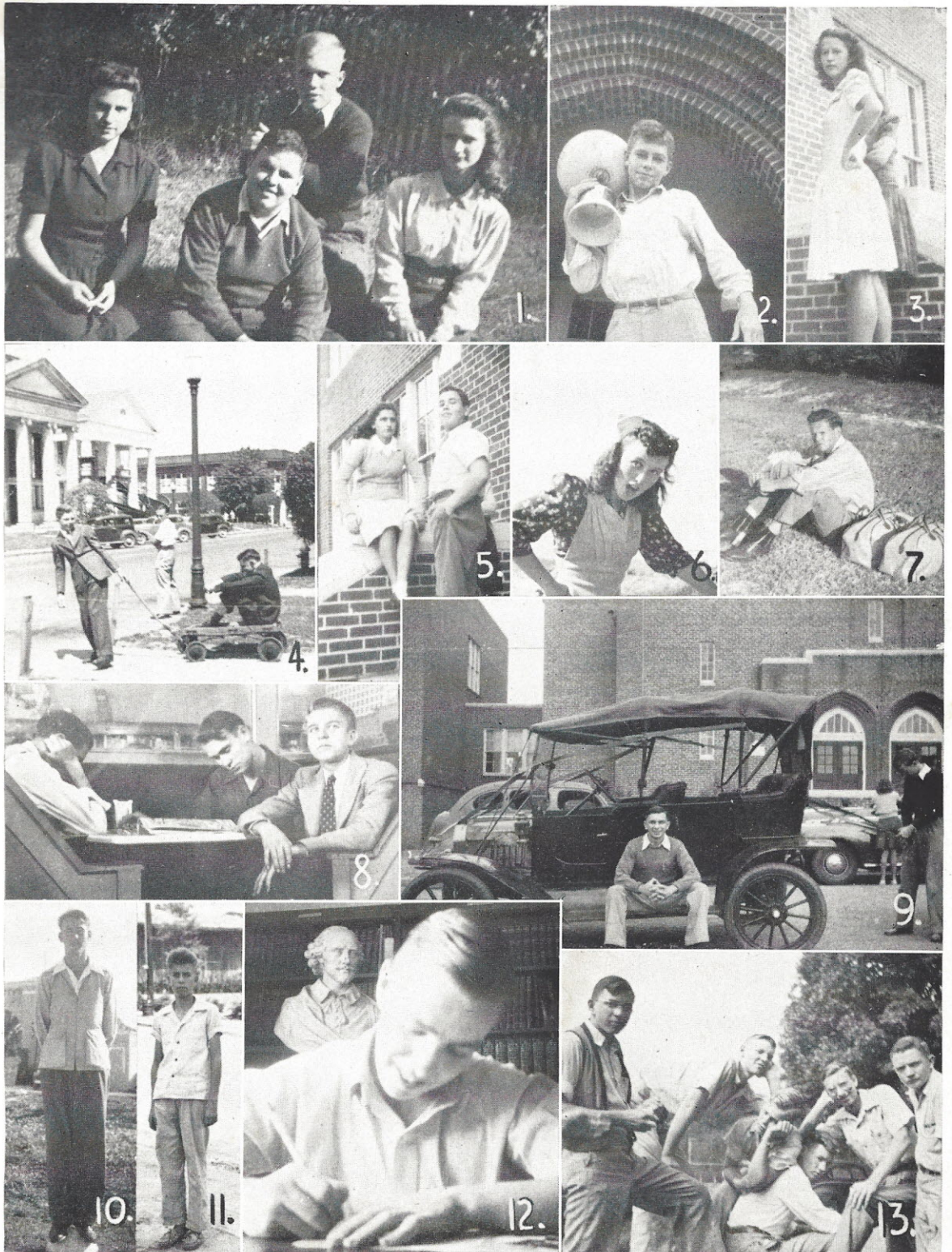
ARMSTRONG, BETTY JO
 ATKINSON, CLIFTON
 BENNETT, RAY
 BOULWARE, LOUISE
 BRABHAM, MARTHA
 BRANHAM, CLARA MAE
 BRICE, HAROLD
 BRICE, TOMMY
 CASSIDY, RAYMOND
 CATHCART, MARY EVELYN
 CHAMBERS, MARTHA REE
 CLAYTON, J. D.
 CLOWNEY, GEORGE M.
 COKER, JEAN
 COLEMAN, FINOUS
 CARNELL, VERNICE
 CROSLAND, EUNICE
 DAVIS, ELMER.
 DEAN, RUDY
 DOMINY, GORDON
 DOTY, ANNE
 DOUGLASS, GEORGE
 DOUGLAS, JUANITA
 DOVE, MANUEL
 DUCKETT, ALBERT
 ELLISON, GRACE

GARDNER, LEONARD
 HALL, CONRAD
 HAMLET, OTIS
 HORNSBY, PEGGY
 HENNESSEE, RAYE
 HEUSTESS, JOHN
 HICKS, JEANNE
 HAMES, WILLIE REID
 HOLSONBACK, VIVIAN
 HOOVER, YVONNE
 HUMPHRIES, FRANCES
 LOWE, JOSEPHINE
 LANGFORD, CATHERINE
 LOVETT, RUTH
 MARTHERS, EUNICE
 McCANTS, GLENN
 McCLINTOCK, ANNIE
 McCRIGHT, MARGIE
 McGINNIS, JAMES
 McKAY, BRADY
 McLENDON, OPHELIA
 McMURRAY, MARIE
 PARK, GEORGE
 PHILLIPS, PHIL
 PLYLER, BETTY LOU
 POPE, BETTY
 POPE, HAYES

POSTON, HATTIE
 PRICE, DOROTHY
 PRICE, PEARL
 PRIOR, EDWARD
 RABB, SADIE LEE
 REYNOLDS, LUCILLE
 RHODUS, BILLY
 RUTLAND, TOMMY
 SHOPE, MARGER Y
 SMITH, J. W.
 SMITH, MARIE
 SMITH, RUFUS
 SPIRES, CODY
 STEVENSON, DONALD
 STEVENSON, ELIZABETH
 STEVENSON, IRENE
 STEVENSON, KATHERINE
 SUMMERS, ROBBIE LOU
 THOMPSON, LOUIS
 TURNER, BETTY
 TURNER, CHARLES
 TURNER, HAROLD
 WATERS, THOMAS
 WEBB, GERALDINE
 WILKES, ERNESTINE
 YONN, GENEVA

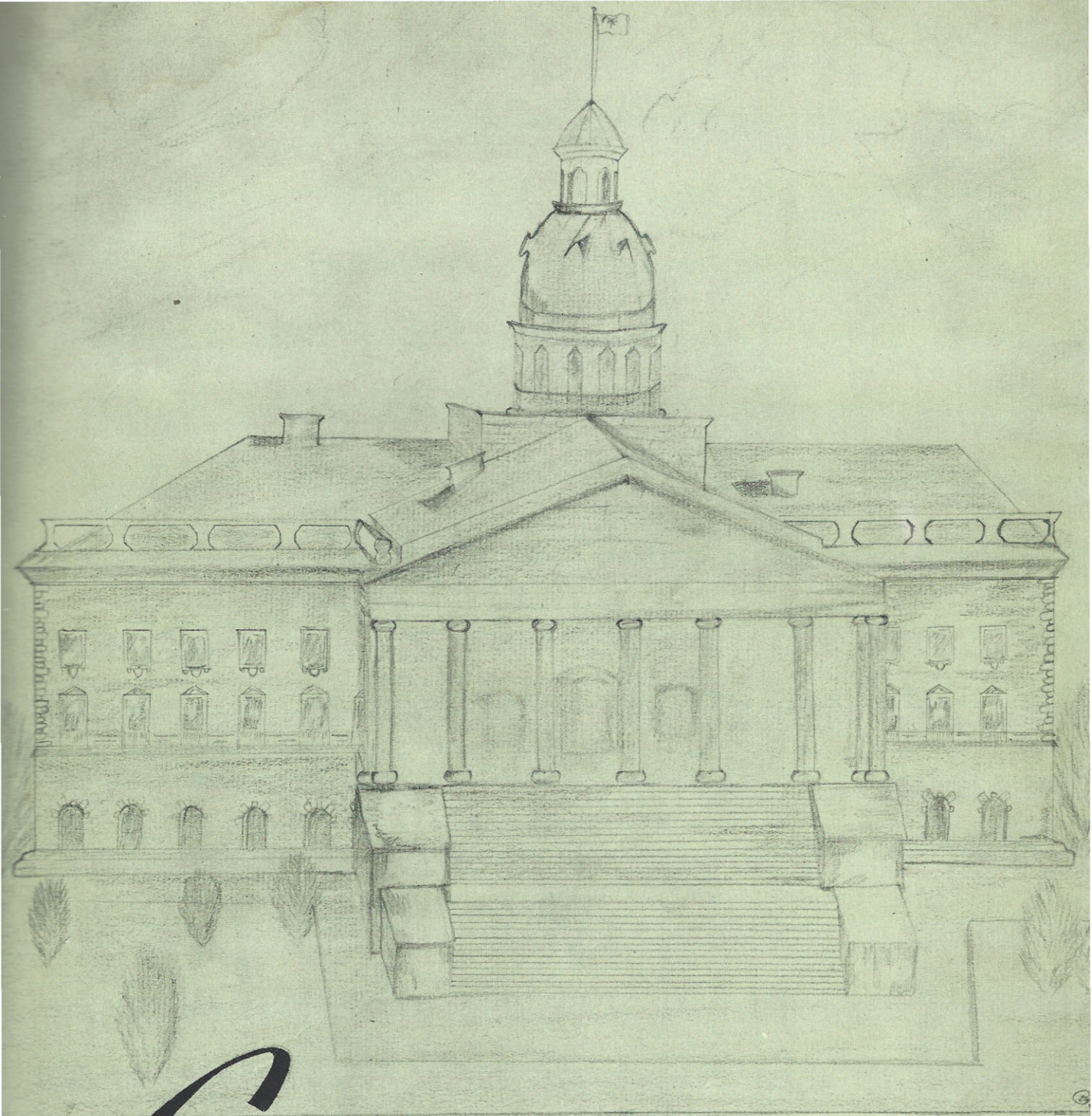


SENIOR SNAPS



(1) Watch the birdie! . . . (2) Atlas. . . (3) Ruth. . . (4) Just kids. . . (5) Highbrow. . . (6) What th'???? . . . (7) Off to join up. . . (8) Alert Seniors. . . (9) Off to a slow start. . . (10) Man or beast? . . . (11) Name it and you can have it! . . . (12) "Two heads are better than one." . . . (13) Dignified Seniors.



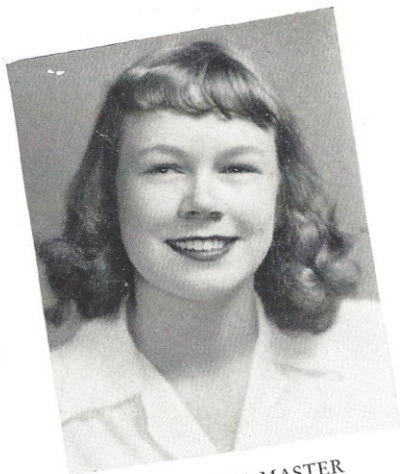


Activities

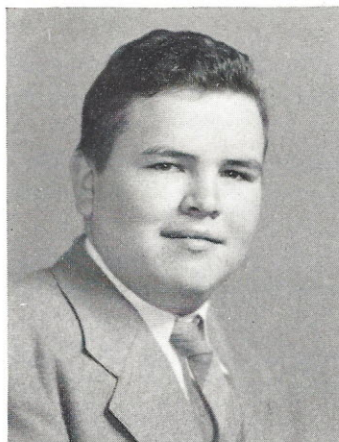
*"That which we are and shall be is made up
of what we have been . . .
Ourselves are our own records."*

"Lines to R. L."—Henry Tinrod

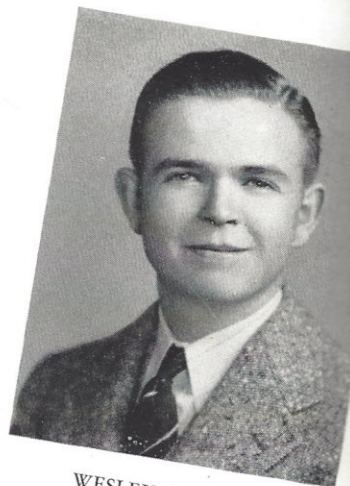
Capitol Building—Columbia, South Carolina



JEANNE McMASTER
Business Manager



WILLIAM HEUSTESS
Editor-in-Chief



WESLEY BRAZIEL
Circulation Manager

TUSITALA STAFF



EDITORIAL STAFF

- | | | | |
|----------------------------|-----------------------------------|--------------------------|-------------------------|
| REBEKAH TURNER | <i>Historian</i> | CAROL BERTHOLD | <i>Literary</i> |
| RANDOLPH BRATTON | <i>Athletics</i> | DICK FERGUSON | <i>Picture Manager</i> |
| MITTIE STEVENSON | <i>Assistant Business Manager</i> | MARGIE WYLIE | <i>Assistant Editor</i> |
| JOHN BECKHAM | <i>Snapshots</i> | | |



TYPING STAFF

ANNIE WALKER
DORIS SHAW
JOHN HARDEN
RUTH WALSH
AUDREY ESTES



TUSITALA STAFF



ART STAFF

R. E. GRIFFIN ANNIE WALKER LILLIE MAE COOPER
BOBBY TURNER VIRGINIA MORGAN





B E T A C L U B

Achievement, Character, Leadership

MEMBERS

AMEEN, OTIS
 BERTHOLD, CAROL
 CATHCART, RUTH
 CENTER, MIRIAM
 CROSLAND, ANN
 DOUGLASS, BOBBY
 ELLISON, KATE
 ESTES, AUDREY
 FERGUSON, DICK
 GOUDELOCK, BETTY

HARDEN, JOHN
 HAYNES, TAL
 HEUSTESS, WILLIAM
 McLENDON, MARGARET
 McMASTER, CHRISTINE
 McMASTER, ELIZABETH
 McMASTER, JEANNE
 McMASTER, NORVELLE
 McMASTER, RACHEL

PATRICK, SARA JANE
 PLYLER, SARA
 PHILLIPS, BETTY JO
 RAGSDALE, BOB
 ROBERTSON, FRANCES
 STEVENSON, MITTIE
 TURNER, REBEKAH
 WALSH, RUTH
 WELLS, OSBORNE
 WYLIE, MARGIE



OFFICERS

WILLIAM HEUSTESS
President
 DICK FERGUSON
Vice-President
 MITTIE STEVENSON
Secretary
 MARGIE WYLIE
Treasurer
 ETHEL BRUCE
Sponsor
 PATTIE PARKER
Sponsor

OFFICERS

WILLIAM HEUSTESS
President

RACHEL McMASTER
Vice-President

BETTY GOUDELOCK
Secretary

QUAY McMASTER
Treasurer

EMILIE H. CALDWELL
Sponsor



WINNSBORO LATIN CLUB

Organized 1927

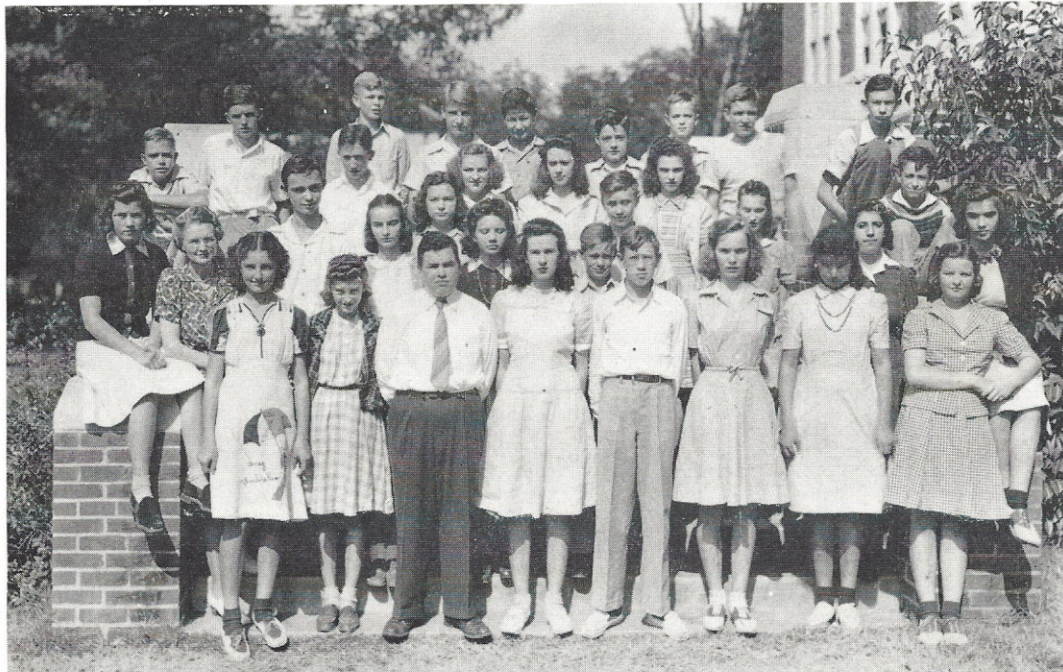
"Forsan et haec olim meminisse juvabit."

MEMBERS

ARMSTRONG, BETTY JO
BECKHAM, BILLY
CRAWFORD, ARTHURETTA
DAVIS, LUCY
DesPORTES, BOBBY
DOTY, ANNE
DOTY, BILLY
DOUGLASS, GEORGE
EDENFIELD, CHARLES
GEORGE, HENDRIX
GOUDELOCK, BETTY
GOUDELOCK, ELLA V.
HALL, BETTY

HALL, CONRAD
HAMLET, OTIS
HENNESSEE, RAY
HEUSTESS, WILLIAM
HICKS, BOBBY
HICKS, JEANNE
KIRKLAND, FREDERICA
McKAY, BRADY
McMASTER, QUAY
McMASTER, RACHEL
NORMAN, HAMDY
PARK, ARTHUR
PARK, GEORGE

PHILLIPS, PHIL
PLYLER, BETTY LOU
POSTON, HATTIE
PRICE, PEARL
RUTLEDGE, MARY BYRD
SHEDD, GEORGE
SHOPE, MARGERY
SITTON, JACK
TURNER, BOBBY
TURNER, CARROLL
TURNER, CHARLES
YONN, GENEVA





OFFICERS

JEANNE McMASTER
President

NORVELLE McMASTER
Vice-President

MARGIE WYLIE
Secretary and Treasurer

MARION RIDGEWAY
Sponsor

FRENCH CLUB

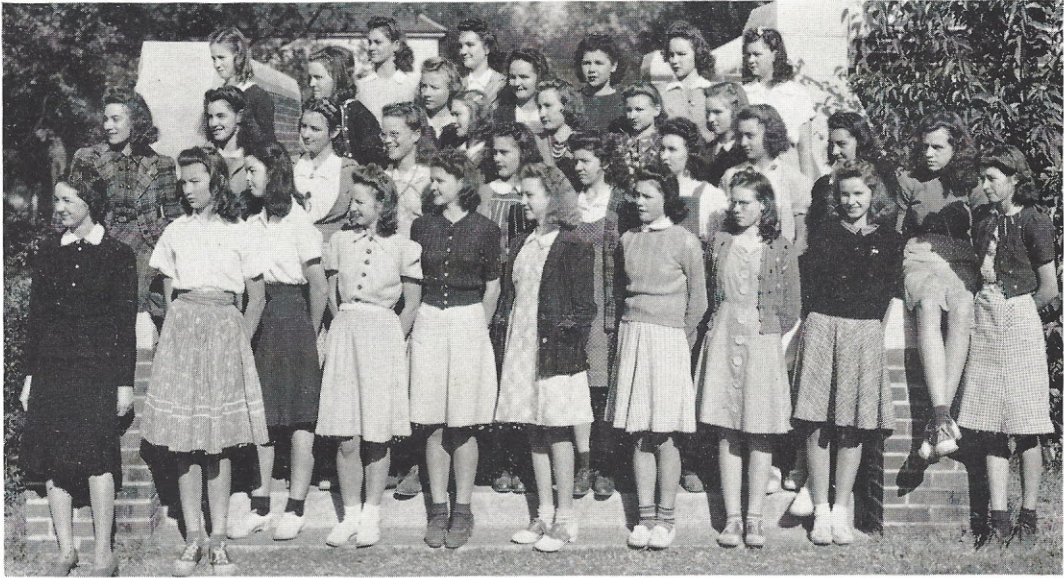
MEMBERS

BRABHAM, ANN MILDRED
BRASWELL, MILDRED
CROSLAND, ANNE
DOUGLASS, BOBBY
ELLISON, KATE
GOUDELOCK, BETTY
HARDEN, JOHN
HORNE, MARGARET

McKAY, ELLERAINE
McKAY, LORRAINE
McLENDON, MARGARET
McMASTER, ELIZABETH
McMASTER, JEANNE
McMASTER, NORVELLE
McMASTER, RACHEL
PATRICK, SARA JANE

PHILLIPS, BETTY JO
PLYLER, SARA
POPE, IMOGENE
RAGSDALE, BOB
STEVENSON, ERLEEN
STEVENSON, MITTIE
TURNER, REBEKAH
WYLIE, MARGIE





JUNIOR HOMEMAKERS

"A well rounded personality for every girl and a happy home for every family."

MEMBERS

ANDERSON, JOYCE
 BAGGOTT, BURNIDENE
 BENNETT, JEAN
 BOULWARE, LOUISE
 BRANHAM, KATHLEEN
 CARNELL, DORIS
 CHAMBERS, MARTHA REE
 COLLINS, ALICE
 CRAWFORD, LILLIE BELLE
 FLOYD, MAXINE
 FOWLER, CLARA BELLE
 GRESHAM, MILDRED
 HALEY, EDNA

HAMES, WILLIE REID
 HATCHELL, EDITH
 JACKSON, VIOLA
 JOHNSON, ELOISE
 LEVY, EVA
 McCLINTOCK, NINA
 McLENDON, KATHLEEN
 McMURRAY, MARIE
 MARTHERS, EUNICE
 MATTOX, BETTY
 MERCER, ANNA
 MOLNAR, VIRGINIA
 MORRIS, ELOISE
 PARK, MARGARET

PITTMAN, MARY
 RAMSEY, LOUISE
 REYNOLDS, LUCILLE
 SHARPE, RUTH
 SHAW, NATALIE
 SIMS, MARGARET
 SLATER, LOIS
 THIGPEN, GENEVA
 TURNER, BETTY
 WELCH, ERNESTINE
 WILKES, ERNESTINE
 WOODS, ETHEL
 YOUNG, DOROTHY

OFFICERS

NINA McCLINTOCK
President

MILDRED GRESHAM
Vice-President

LOIS SLATER
Secretary

DORIS CARNELL
Treasurer

NATALIE SHAW
Reporter

MAREE OWENS
Sponsor





MOUNT ZION GLEE CLUB

MEMBERS

AIKEN, MARSHALL
 ANDERSON, JOYCE
 ARMSTRONG, BETTY JO
 BAGGOTT, BURNIDENE
 BENNETT, JEAN
 BRABHAM, ANN MILDRED
 BRABHAM, MARTHA
 BROWN, HELEN
 COLLINS, ALICE
 COOPER, LILLIE MAE
 CRAWFORD, RETTA
 DAVIS, LUCY
 DOTY, ANNE
 ELLISON, KATE
 ESTES, AUDREY
 FLOYD, MAXINE
 FOWLER, CLARA BELLE
 FREEMAN, MARIE
 FUNDERBURG, CAROLINE

GOUDELOCK, BETTY
 GOUDELOCK, ELLA V.
 GRESHAM, MILDRED
 HAMES, WILLIE REID
 HICKS, JEANNE
 HORNSBY, PEGGY
 JOHNSON, ELOISE
 LOVETT, RUTH
 McCRIGHT, MARGIE
 McLENDON, OPHELIA
 McMASTER, ELIZABETH
 McMASTER, NORVELLE
 McMASTER, RACHEL
 McMURRAY, MARIE
 MERCER, ANNA
 MOLNAR, VIRGINIA
 MORRIS, ELOISE
 NORMAN, HAMDY
 PATRICK, SARAH JANE
 PLYLER, BETTY LOU

PORTER, MARY LOUISE
 POSTON, HATTIE
 PRICE, DOROTHY
 RAGSDALE, BOB
 REYNOLDS, LUCILLE
 RUTLEDGE, MARY BYRD
 SHAW, DORIS
 SHAW, NATALIE
 SHOPE, MARGERY
 SIMS, MARGARET
 STEVENSON, IRENE
 THIGPEN, GENEVA
 THIGPEN, RUTH
 TURNER, SARA
 WALKER, ANNIE
 WALSH, RUTH
 WEBB, GERALDINE
 WYLIE, MARGIE
 YONN, GENEVA

NELL McMASTER SPROTT *Director*



MOUNT ZION BAND

Organized 1935

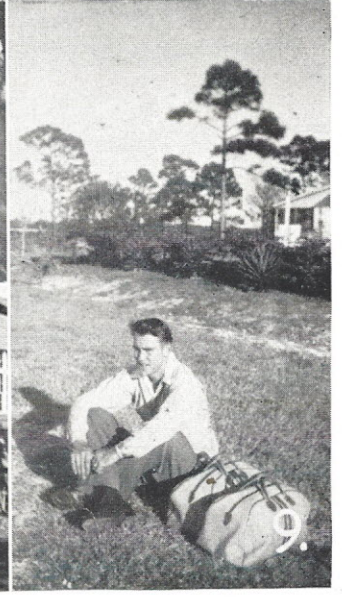
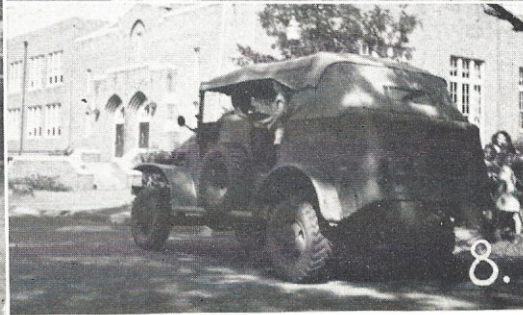
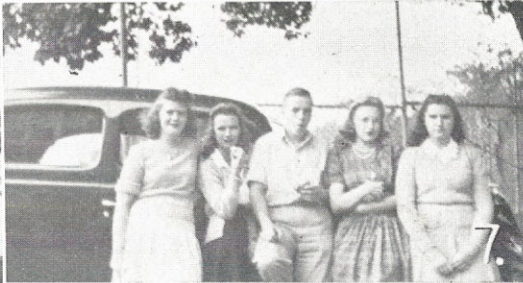
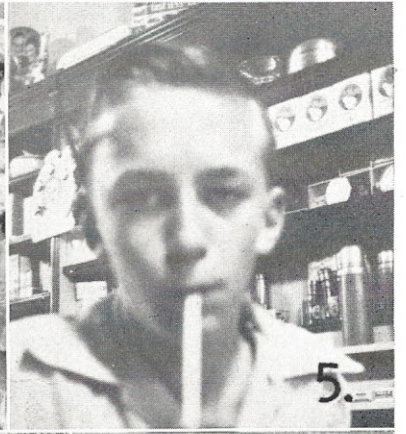
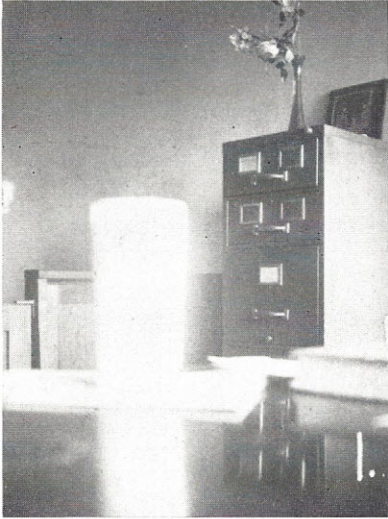
MEMBERS

BECKHAM, BILLY
BRABHAM, ANN MILDRED
BRABHAM, NEIL
CLOWNEY, GEORGE
EDENFIELD, CHARLES
ESTES, BOBBY LEE
GOUDELOCK, ELLA V.
HARDEN, JOHN
HICKS, BOBBY
McCANTS, GLENN

McDONALD, TOM
McMASTER, JEANNE
PHILLIPS, PHIL
PORTER, BOYD
RUTLEDGE, MARY BYRD
SUMMERS, ROBBIE LOU
TAYLOR, SONNY
TURNER, JAMES
TURNER, SARA
WYLIE, AMOS

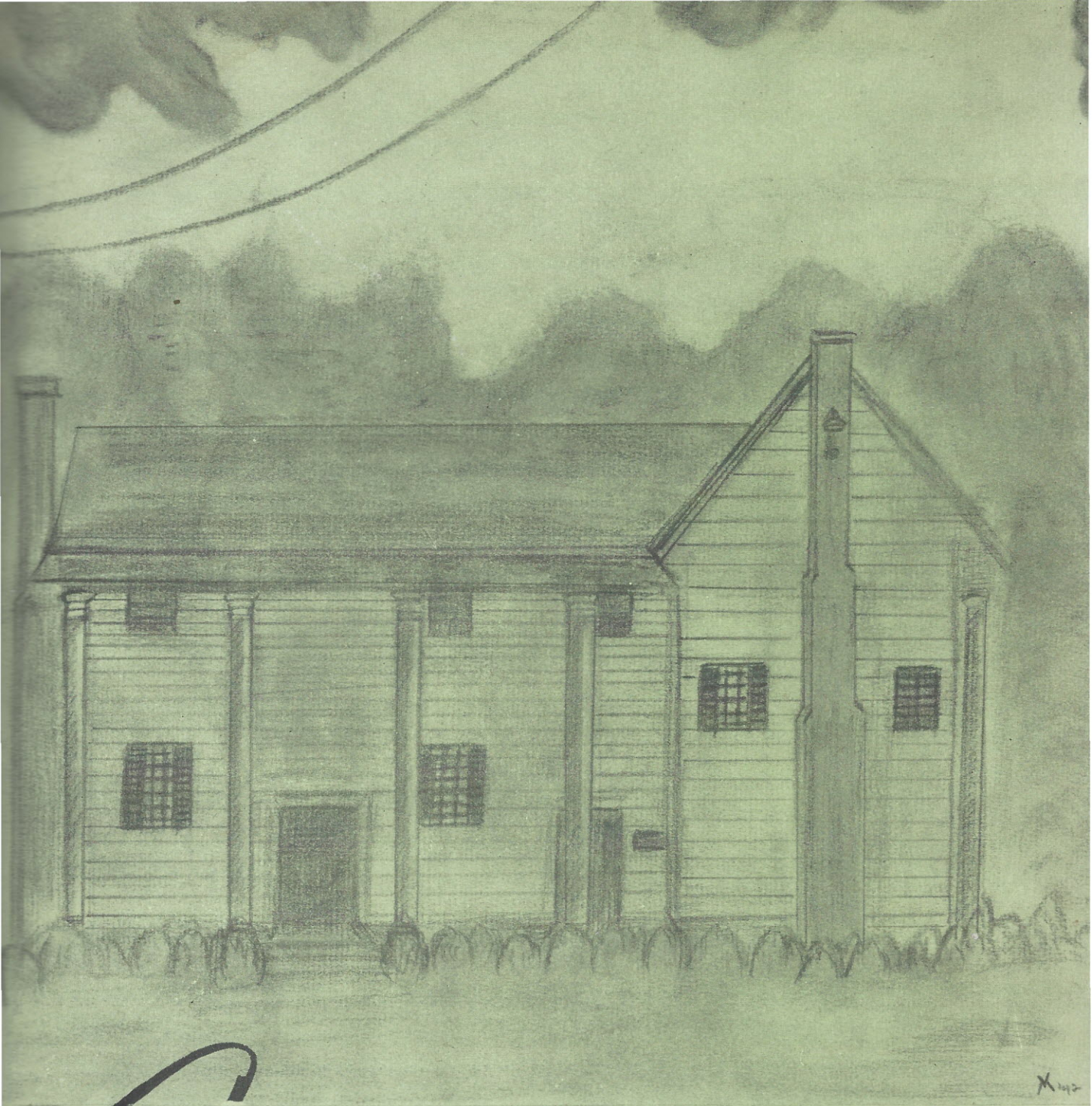
MR. JENKINS Director





(1) Vitamins for "Pat." . . . (2) We jus' foolin'! . . . (3) Simon . . . (4) Wanna' RIDE? . . . (5) "The pause that refreshes." . . . (6) Alma Mater . . . (7) Four roses—one thorn. . . (8) Memories of Maneuvers. . . (9) Between rides.





X 112

Athletics

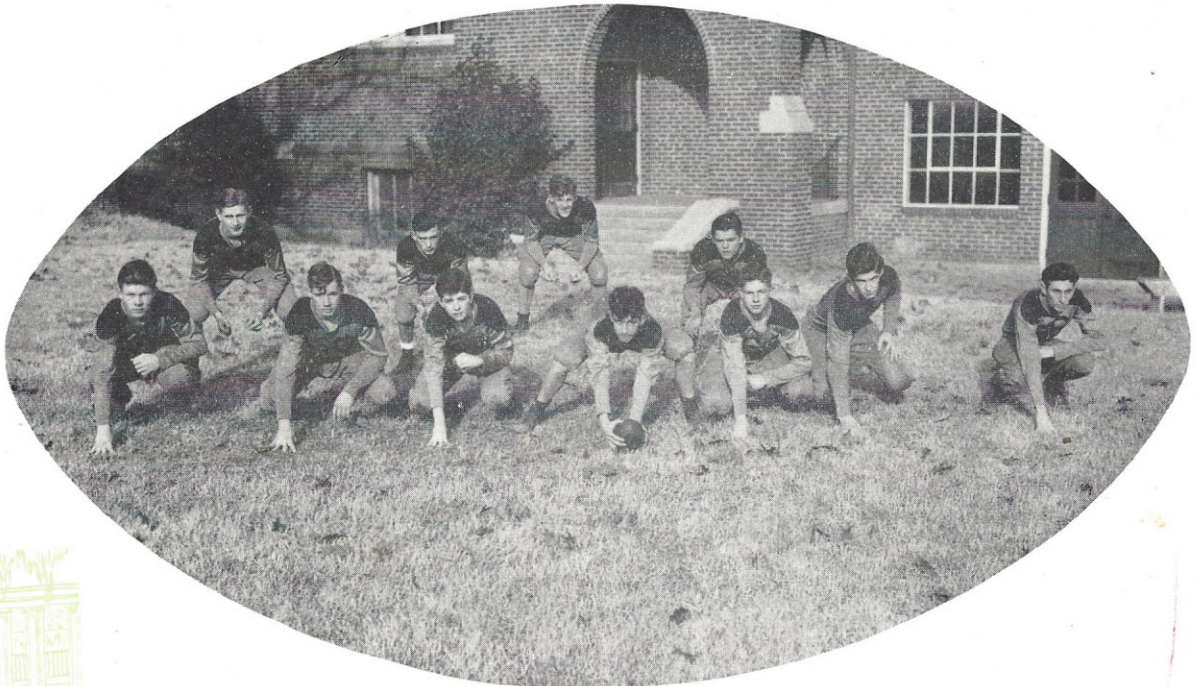
*"Not if I won or lost
Shall ever matter most
But rather how I bore the battle through;
Not if my might prevailed
But that my heart n'er failed;
Not that I triumphed, but that I was true."
"The Struggle"—Archibald Rutledge*

Calhoun's Mansion—Clemson, South Carolina



First Row: Wells, Hughes, Arnette, Porter, Smith, Hutto, Rabb (Manager). • Second Row: Rutland, Lowe, Levy, Haynes, Beckham, Spires, C., Berry. • Third Row: Bratton, Griffin, Spires, W., Jones, Boone, Sitton.

M Z I W I L D C A T S



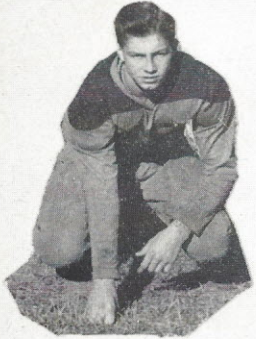
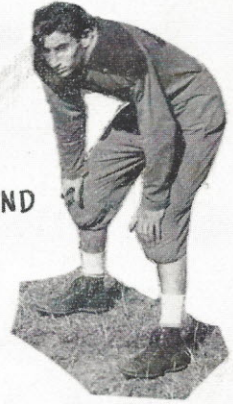


ARNETTE • GUARD



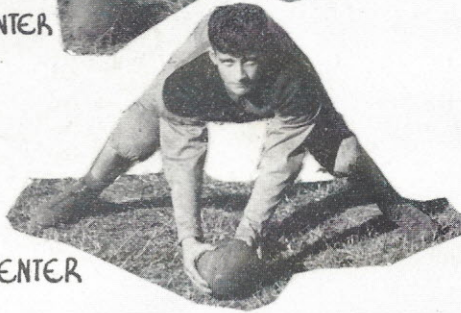
HUGHES • CENTER

LEVY • END



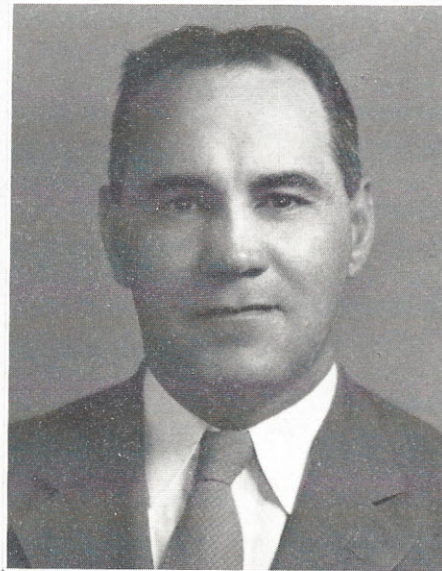
BECKHAM • GUARD

SPIRES, C. • CENTER

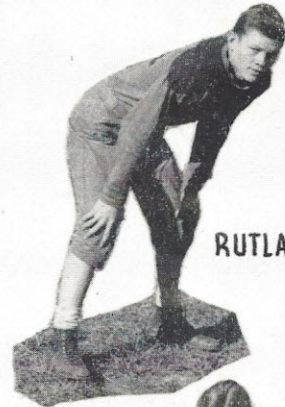


WELLS
END

HAYNES • GUARD



R. P. Wilder, Coach



RUTLAND • END

SITON
TACKLE



BOONE • BACK



BERRY • BACK

W. SPIRES • BACK



LOWE • BACK

GRIFFIN • BACK



JONES
TACKLE



First Row: Sitton, Levy, Berry, Spires, Driggers, Wells, O., Boone, R. P. Wilder (Coach). ● Second Row: Clowney, Rabb, Williams, Ferguson, Miller (Manager), Hicks, Porter, Wells, R.

VARSITY BASKETBALL

SCORES

Mount Zion	26—Jenkinsville	23
Mount Zion	23—Monticello	10
Mount Zion	41—Jenkinsville	39
Mount Zion	25—Ridgeway	23
Mount Zion	23—Monticello	22
Mount Zion	26—Ridgeway	31
Mount Zion	19—Rock Hill	13
Mount Zion	48—Newberry	12
Mount Zion	26—Whitmire	22
Mount Zion	45—Whitmire	18
Mount Zion	30—Union	26
Mount Zion	30—W. T. S.	19
Mount Zion	22—Great Falls	33
Mount Zion	13—Rock Hill	15
Mount Zion	39—W. T. S.	13
Mount Zion	21—Union	47
Mount Zion	16—Great Falls	28





First Row: Hackle, Anderson, Walsh, Hudson, Shaw, D. • Second Row: Shaw, N., Morris, McMaster, J., Thigpen, Leviner. • Third Row: Crawford, Davis, Rutledge, McMaster, R., McMaster, N. • Fourth Row: Neeley, Molnar, Miss Sarah Symmes (Coach).

VARSITY BASKETBALL

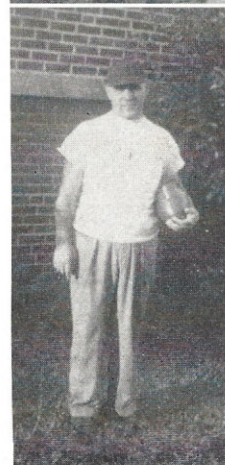
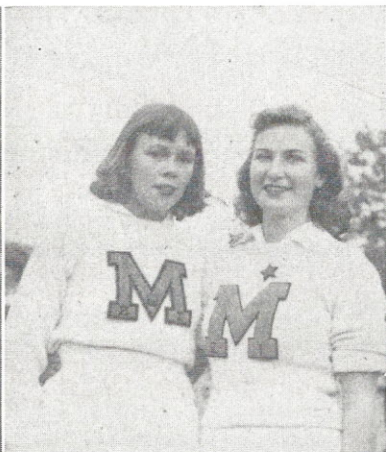
SCORES

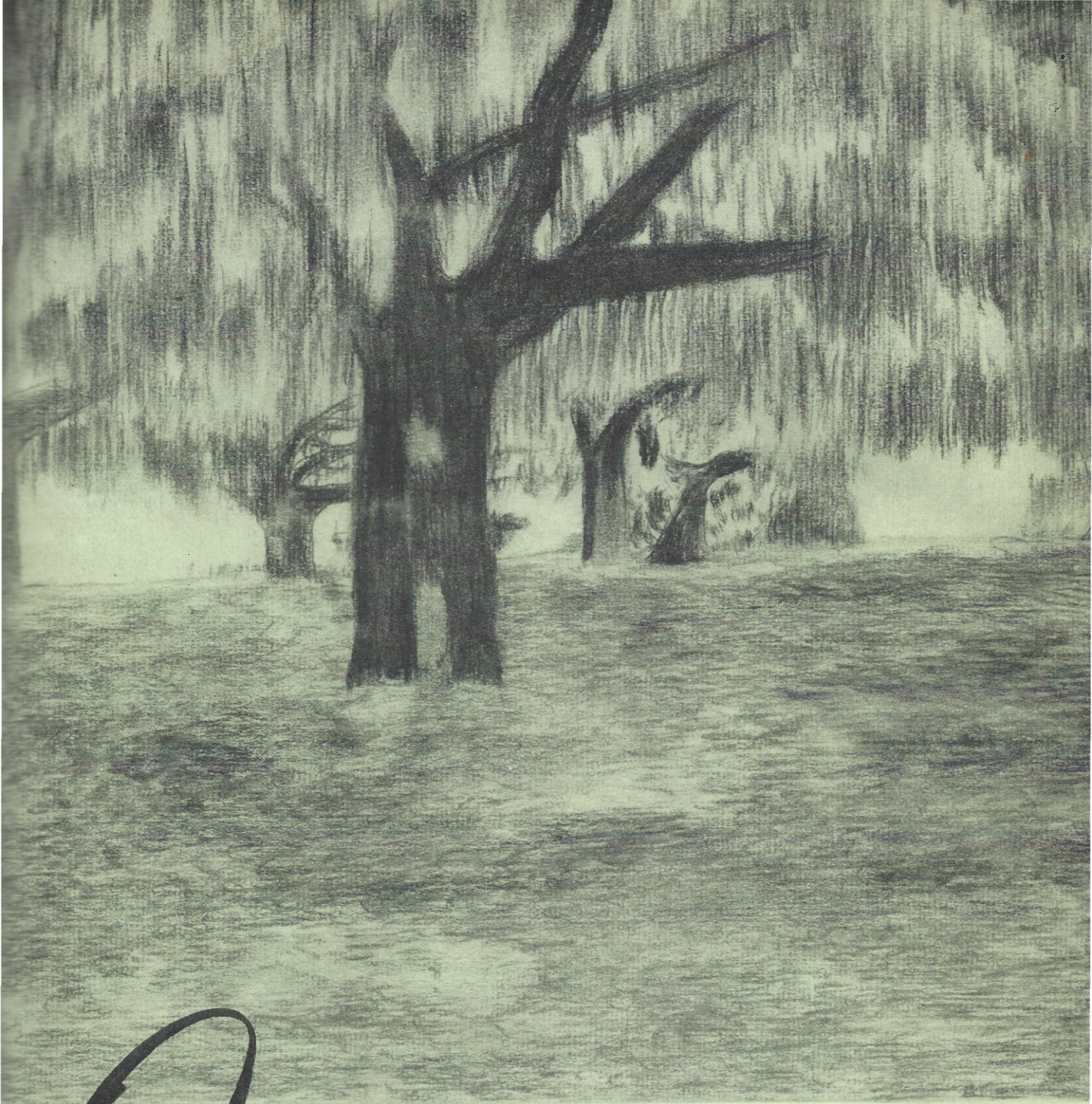
Mount Zion	33—Jenkinsville	49
Mount Zion	37—Monticello	13
Mount Zion	23—Jenkinsville	29
Mount Zion	27—Monticello	20
Mount Zion	21—Rock Hill High	32
Mount Zion	31—Newberry	11
Mount Zion	67—Whitmire	12
Mount Zion	55—Whitmire	9
Mount Zion	17—W. T. S.	33
Mount Zion	33—Great Falls	9
Mount Zion	20—Rock Hill High	25
Mount Zion	45—Jenkinsville	19
Mount Zion	22—W. T. S.	26
Mount Zion	33—Great Falls	14

Champions District 4; Champions Zone 2; State Semi-Finals



WILDCATS IN ACTION





Features

*"Ancestral ancient trees; skies, rivers, dawn,
And glimmering Evening's long-lashed mysteries."
"The Great of Heart"—Archibald Rutledge*

Brookgreen Gardens—Georgetown, South Carolina



Most Popular

JEANNE McMASTER

WILLIAM HEUSTESS

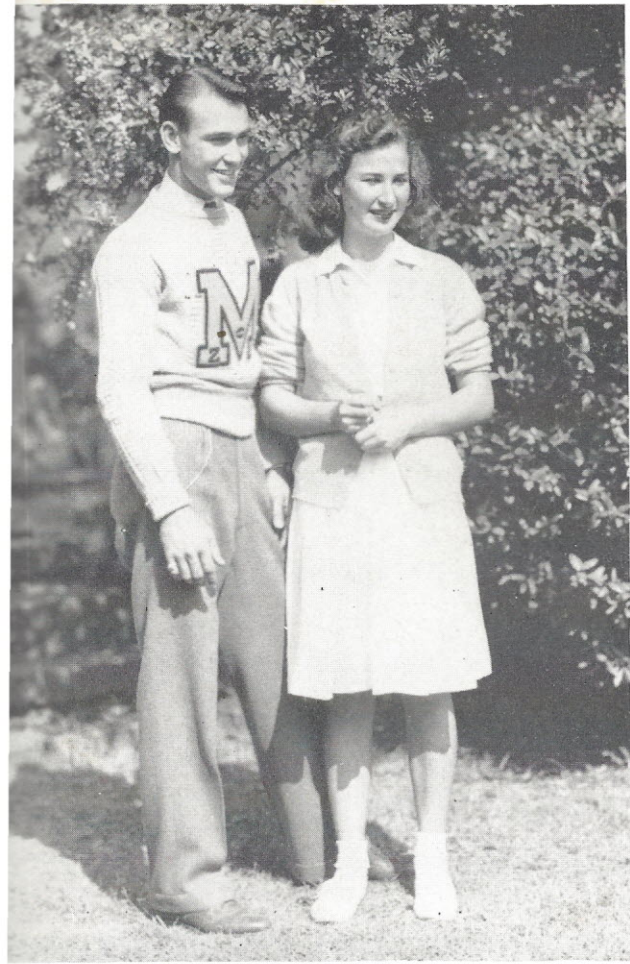
WHO'S WHO AT

Most Intellectual

REBEKAH TURNER

DICK FERGUSON





Most Talented

LILLIE MAE COOPER

R. E. GRIFFIN

MOUNT ZION



Most Dependable

CAROL BERTHOLD

WESLEY BRAZIEL





Best All-Round

MITTIE STEVENSON

RANDOLPH BRATTON

WHO'S WHO AT

Most Athletic

RUTH WALSH

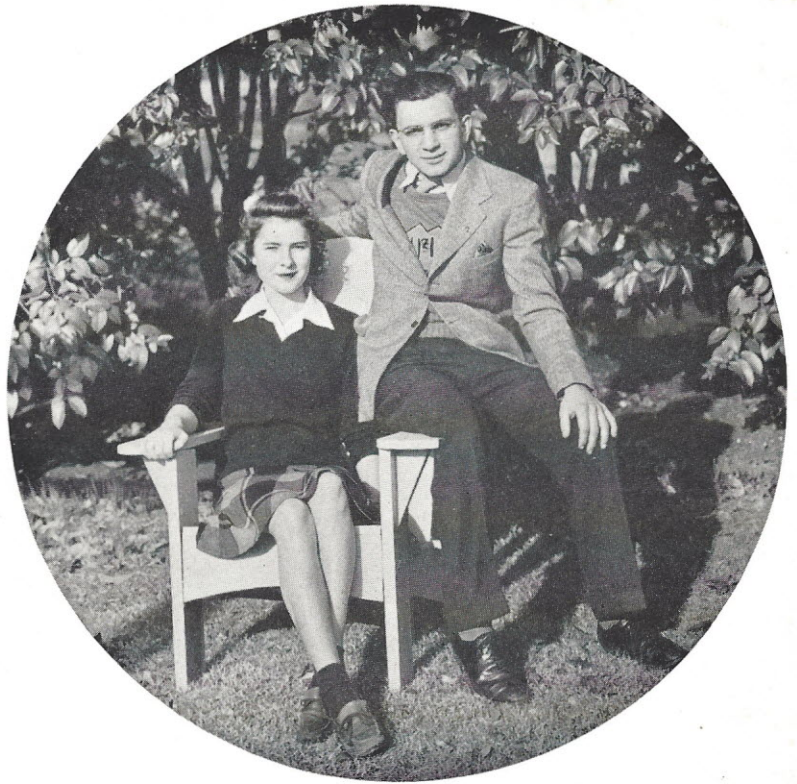
HARRY LEVY



Most Courteous

MARGARET HORNE

OTIS AMEEN



MOUNT ZION



Most Original

RUTH CATHCART

BOBBY DOUGLASS



ACKNOWLEDGMENTS

The staff of the 1942 TUSITALA wishes to express its appreciation to the following people and organizations for their co-operation with our annual:

To Our Faculty Advisers—

Miss Irma Berry

Miss Mary Grey Withers

Miss Pattie Parker

Miss Helen Riley

To Mrs. John McSwain and her Typewriting Department

To Virginia Morgan and Bobby Turner for their able assistance with the art work

To our Friends and to the Business Firms of Winnsboro, who through their contributions and advertisements have helped to make our annual possible

COMPLIMENTS

OF



WINNSBORO BLUE GRANITE

COMPLIMENTS

OF

The Fairfield Inn

WINNSBORO, S. C.

THE NEWS AND HERALD

Only Newspaper In Fairfield County

"Born 1844 — Still Going Strong"

SUBSCRIPTION \$1 PER YEAR

JOB PRINTING

OFFICE SUPPLIES

ECONOMY DRUG CO.

PRESCRIPTION DRUGGISTS

In Business for Your Health

DIAL 225

WINNSBORO, S. C.

Compliments

of

THE MEN'S SHOP

WINNSBORO, S. C.

FURMAN UNIVERSITY

Founded 1826

JOHN LANEY PLYLER, *President*

For Catalogue Write to

DEAN R. N. DANIEL
College for Men

DEAN VIRGINIA THOMAS
College for Women

BEST WISHES

to the

CLASS OF 1942

HORNES

HANNA & DOTY

CHRYSLER *and* PLYMOUTH

WINNSBORO, S. C.



SHELL PRODUCTS



Winnsboro Petroleum Co.

(HOME FOLKS)

Compliments

of

Bloodworth's Pharmacy

WINNSBORO MILLS

Compliments

of

L. C. HARDY, JEWELER

WINNSBORO, S. C.

Compliments

of

Fouché and Estes Furniture Co.

WINNSBORO, S. C.

Dial 373

MEADE-VILLA

"A Home Away From Home"

CLEANLINESS AND COURTEOUS
SERVICE

PLUS GOOD FOOD

BLAIR & CASTLES

ESSO STATION



WINNSBORO, S. C.

Compliments

of

Leitner's Beauty Salon

WINNSBORO, S. C.

Compliments

of

**Marthers and Boulware
Barber Shop**

WINNSBORO, S. C.

Compliments

of

Roddey's Candy Kitchen

WINNSBORO, S. C.

COLONIAL DRUG CO.

Thank You . . . It's a Pleasure to Serve You

We Carry a Complete Line of Nationally Advertised Products

DIAL 5221

WINNSBORO, S. C.

Congratulations

and

Best Wishes

MASTER ICE AND FUEL CO.

BELK'S
DEPARTMENT
STORE

•
HOME OF
BETTER VALUES

Congratulations

to

CLASS OF 1942

•
BANK OF FAIRFIELD

MEMBER F. D. I. C.

U. G. DESPORTES COMPANY

UNITED STATES TIRES

HAY AND FEED STUFF

HULLS AND MEALS

FARM IMPLEMENTS

Wholesale and Retail

Winnsboro

South Carolina

COMPLIMENTS

OF

Merchants & Planters Bank

SAFE . . . SANE . . . SOUND



Member Federal Deposit Insurance Corporation

COMPLIMENTS

OF

FAIRFIELD FOREMOST DAIRY

WINNSBORO, S. C.

COMPLIMENTS

OF

PHILLIPS' GRANITE CO.

A. E. DAVIS & CO.

WINNSBORO, S. C.



HARDWARE

MEATS

GROCERIES

CONGRATULATIONS!

CLASS OF 1942



FAIRFIELD OIL CO.

WINNSBORO, S. C.

Compliments

of



Roses 5-10-25c Store

Compliments

of



J. B. MINCEY

Compliments

of

ROYAL SERVICE

Station No. 1

DEALERS IN SHELL PRODUCTS

Compliments

of



Roddey Mercantile Company

WINNSBORO, S. C.

Congratulations and

Good Wishes

ERSKINE COLLEGE

DUE WEST, S. C.

R. C. GRIER, *President*

Winnsboro Cleaning Co.

WINNSBORO, S. C.

DIAL 224

Compliments

JOHN H. McMASTER & CO.

Prescription Druggists

"A Century of Service"

DIAL 228

Compliments

of

FATE THORNTON



Compliments

of

**WESTERN AUTO
ASSOCIATE STORE**

Compliments

of

CAROLINA THEATRE

"The Home of Better Pictures"

BOYD BROWN

"The Store Where You Get
Your Money's Worth"



FRANK NORMAN & BRO.

WINNSBORO, S. C.



CONGRATULATIONS!

MRS. A. B. BRASWELL



•
BEST WISHES!

DOTY & SON
•

ROYAL LUNCH

FOR BETTER SANDWICHES

AND

COLDER DRINKS

J. J. TURNER

Superior Granite Works

WINNSBORO, S. C.

For Better Monuments

WINNSBORO BLUE GRANITE

SILK OF THE TRADE

S. G. CLARK

Compliments

of

Winnsboro Chevrolet Co.

WINNSBORO, S. C.

Compliments

of

ROYAL SERVICE

Station No. 11

J. "HAPPY" McLENDON

Compliments

of

RILEY M. BRICE

Friends



SUCCESSFUL ANNUALS

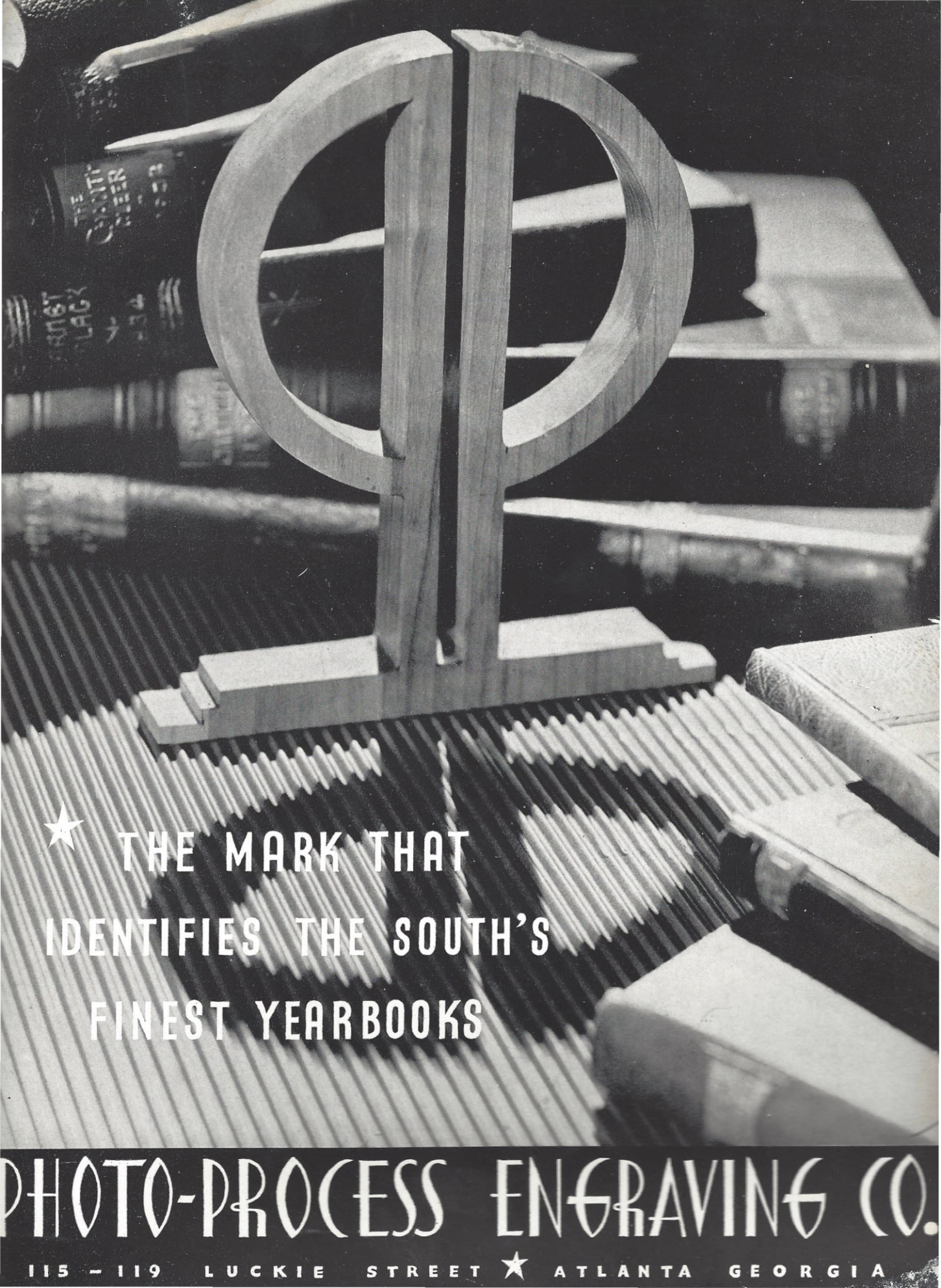
Require the services of experienced and expert craftsmen, trained in every detail of the processes of creating • planning layout and design • typesetting • printing lithographing and binding... Throughout half a century this company has pioneered in the production of the highest type of printing... Our services include a special college annual sales and service organization... Abundant equipment • modern and complete... Prices representing maximum in value



FOOTE & DAVIES

PRINTING • LITHOGRAPHING • ENGRAVING

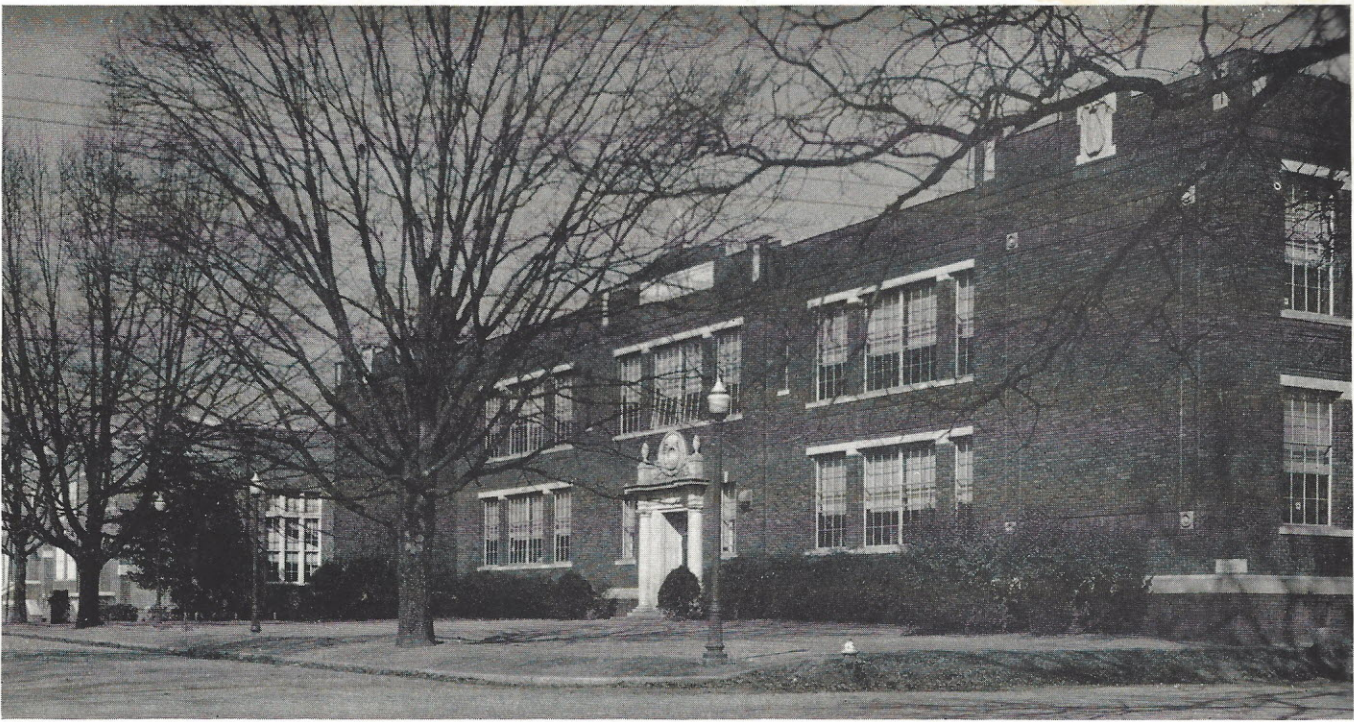
ATLANTA



★ THE MARK THAT
IDENTIFIES THE SOUTH'S
FINEST YEARBOOKS

PHOTO-PROCESS ENGRAVING CO.

115 - 119 LUCKIE STREET ★ ATLANTA GEORGIA

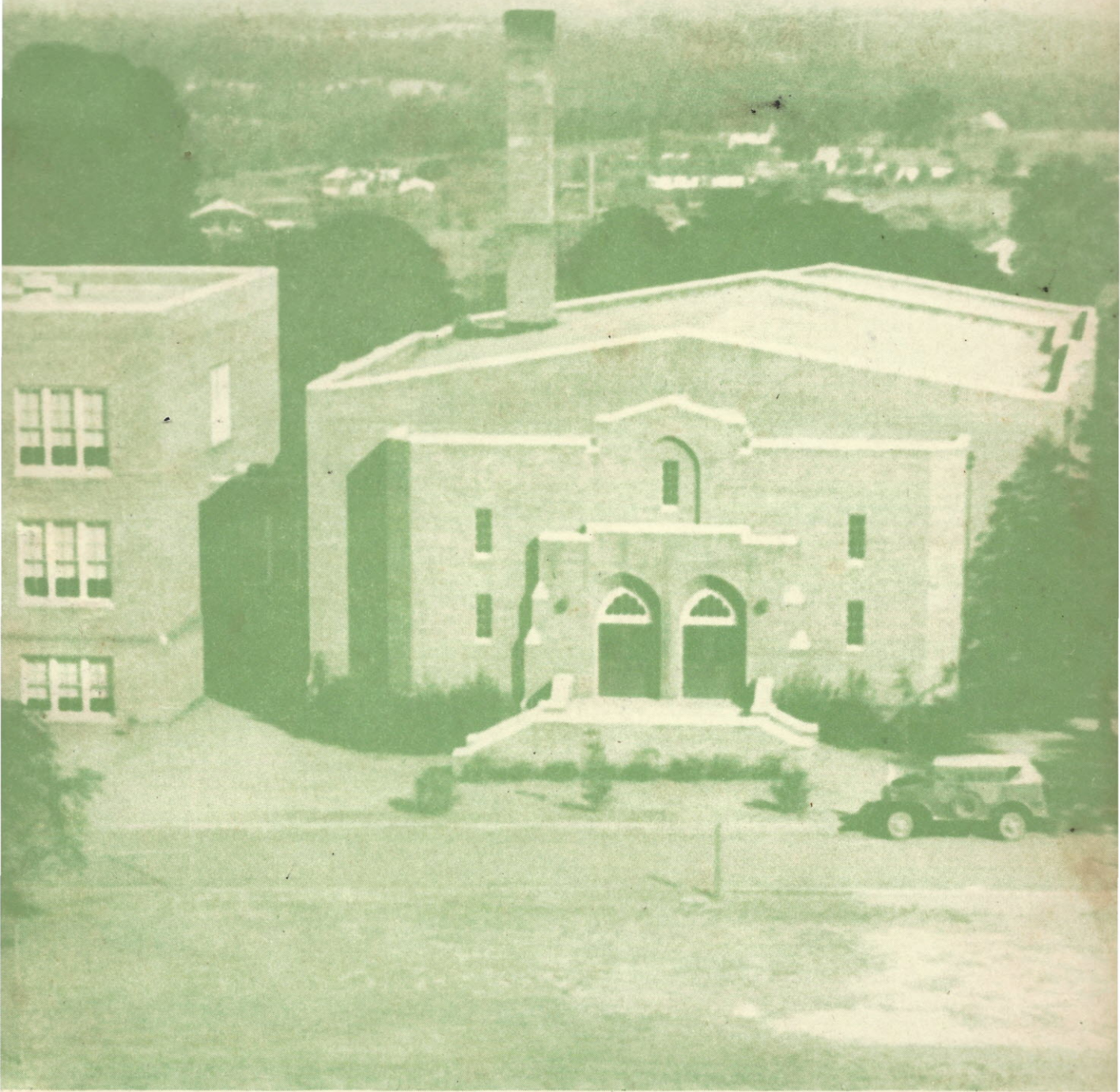


SCHOOL CALENDAR

September 1	School spirit creeps in—Football workouts begin
September 8	What a day!—School opens!—We're off to a good start!
September 19	Work—pleasure—class organization—election of Senior officers
September 19	Results of football workouts—Wildcats over Union—19-0
October 3	Annual under way—TUSITALA staff elected
October 3	Wildcats meet Epworth Orphanage—home gridiron—Results: 0-0
October 7	Financing the annual—we solicit ads.
October 8	Beta Club Installation
October 15	We learn "Who's Who" in the Senior Class to be featured in TUSITALA
October 17	Excitement—Football game with Great Falls—Results: 6-6
October 20, 21	Pictures taken for annual—Watch the birdie and smile!
October 21	Misery in school—misery at home—Report cards for first time
October 22	Mt. Zion bows to Olympia—19-0
October 23, 24	State Fair—Whoopie! Holidays
October 31	Lancaster is victor over Mt. Zion—42-0
November 7	More money for annual—Magician and his Magic!—show in auditorium
November 13	Batesburg "puts it on us"—19-7
November 20, 21	We catch up on our eating—Thanksgiving holidays
December 10	Used to it now—Reports again
December 5	Basketball game—first of season at Jenkinsville
December 9	Another game—this time at Monticello
December 17	A beautiful pageant— <i>The Other Wise Man</i> —by Beta Club
December 19	Jingle Bells!—Jingle Bells!—Christmas holidays begin!
January 5	Whistle while you work!—new day—new year
January 6	Boys are victors in basketball game with Rock Hill—19-13; Girls defeated—31-20
January 7	TUSITALA goes to press
January 21	Exams begin!—Students are gay (oh yeah?)
February 16	Teachers work for Uncle Sam—Students are glad!
February 28	Basketball Girls win Championship Zone 2
March 19, 20	We anticipate holidays!
April 17, 18	Beta Club Convention
April 24	Senior Play—"The Pennington Case"—Mystery! Thrills!
May	Junior-Senior—We are entertained
May	Senior party at the Pattons
May 29	We Graduate!—'Nuf said!



*On the hills of dear old Fairfield
Proudly stands our school;
All hail to thee, our Alma Mater,
Conquer and prevail.*



*Loyal students ever loving
Honor and obey,
All hail to thee, our Alma Mater,
Mount Zion, all hail!*

