

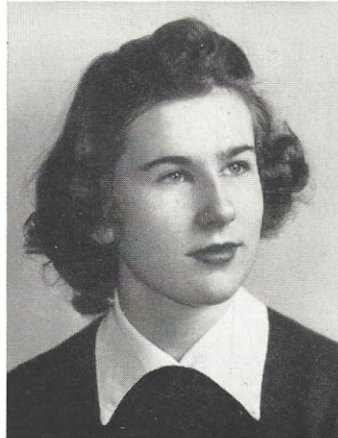
NORVELLE ATKINSON McMASTER

Latin Club, 1, 2; Glee Club, 1, 3, 4; Beta Club, 3, 4; Secretary, Beta Club, 4; French Club, 3, 4; Vice-President, French Club, 3; Basketball, 1, 2, 3; Class Play, 3, 4; Class Vice-President, 4; Best-all-round, 4; Literary Editor, TUSITALA, 4; "Miss High-Miss," 4; Salutatorian, 4.



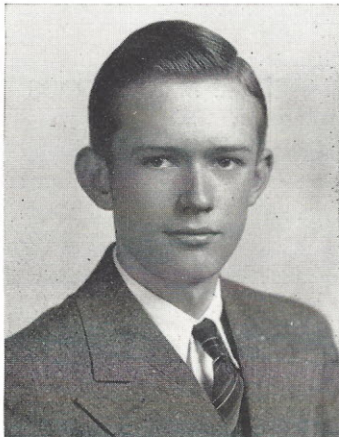
ANNA MARGARET MERCER

Latin Club, 1, 3; J. H. A., 2, 3; Glee Club, 1, 2, 3, 4; Beta Club, 4; Class Play, 4.



RACHEL DONALD McMASTER

Glee Club, 1, 2, 3, 4; Latin Club, 1, 2, 3, 4; Vice-President, Latin Club, 3; President, Latin Club, 4; Basketball, 1, 2, 3; French Club, 3, 4; Beta Club, 3, 4; Vice-President, 4; Most Dependable, 4; Most Intellectual, 4; Assistant Editor-in-Chief, TUSITALA, 4; Class Play, 3, 4; Valedictorian, 4.



BETTY JO PHILLIPS

Latin Club, 1, 2; French Club, 3; Beta Club, 3, 4; Basketball, 3; Class Historian, 4.

*Best wishes
to a sweet girl
Love, Betty*



OSCAR BEAMON PULLEN

*Retta,
I sure will
miss you next
year.
Be sweet!
Love,
"Bob"*

ELINOR GLENN RAGSDALE

Latin Club, 1, 2; Glee Club, 1, 2, 3, 4; Basketball, 2, 3; French Club, 3, 4; Beta Club, 3, 4; Treasurer, Beta Club, 4; Class Play, 3, 4; Class Secretary, 4; Most Popular, 4; Most Talented, 4; Snapshot Editor, TUSITALA, 4.