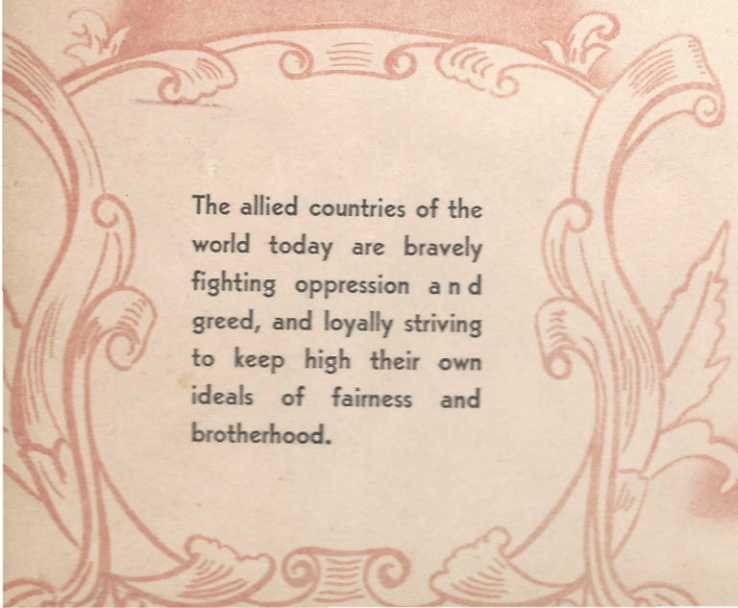


TUSITALA

1943



The allied countries of the world today are bravely fighting oppression and greed, and loyally striving to keep high their own ideals of fairness and brotherhood.



1943 TUSITALA



"Give me your tired, your poor,
Your huddled masses yearning to breathe free,
The wretched refuse of your teeming shore.
Send those, the homeless, tempest-tossed to me,
I lift my lamp beside the golden door."

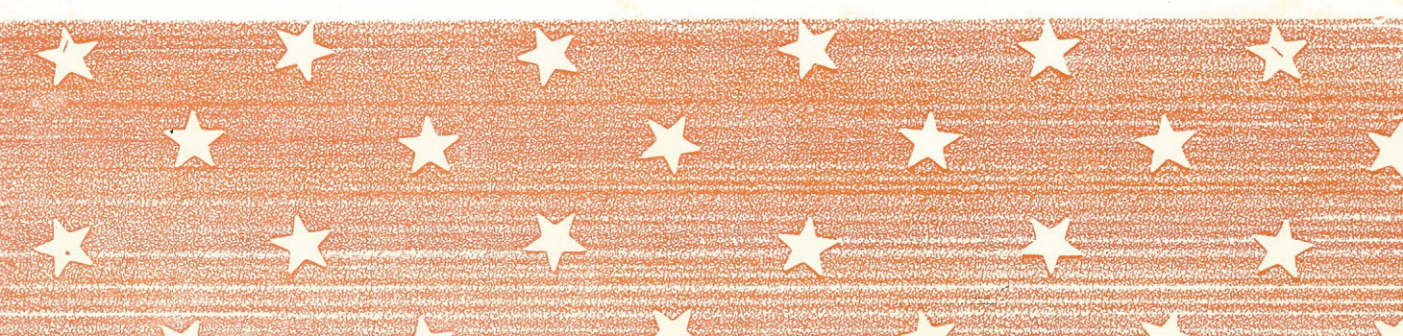
EMMA LAZARUS.



TUSITALA

1943

Published by the Class of
Nineteen Hundred and Forty-Three
for the
Student Body of
MOUNT ZION INSTITUTE,
WINNSBORO, S. C.





FOREWORD

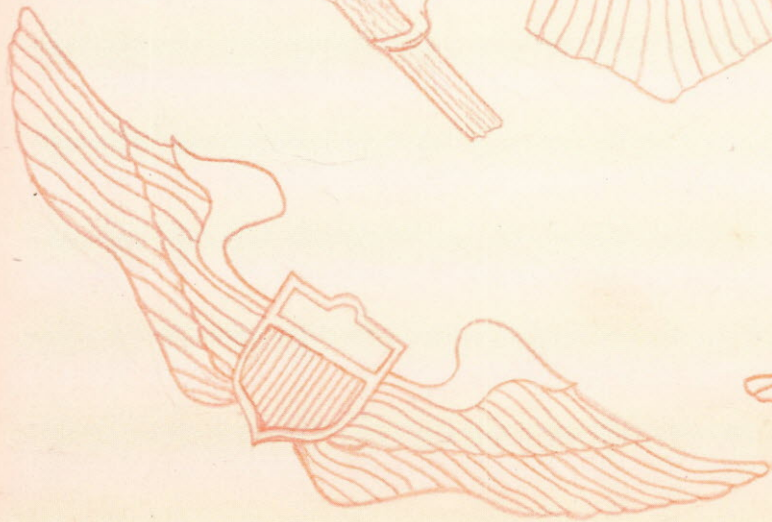
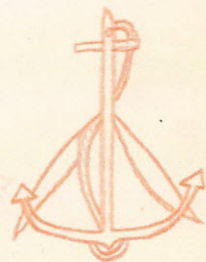
Through all the years since the beginning of our country's history, the name AMERICA has had deep meaning for people from every nation of the world. They have looked to her, our country, with a spirit of hope, for to them she has been the symbol of freedom—the dawn of new life—the land of promise.

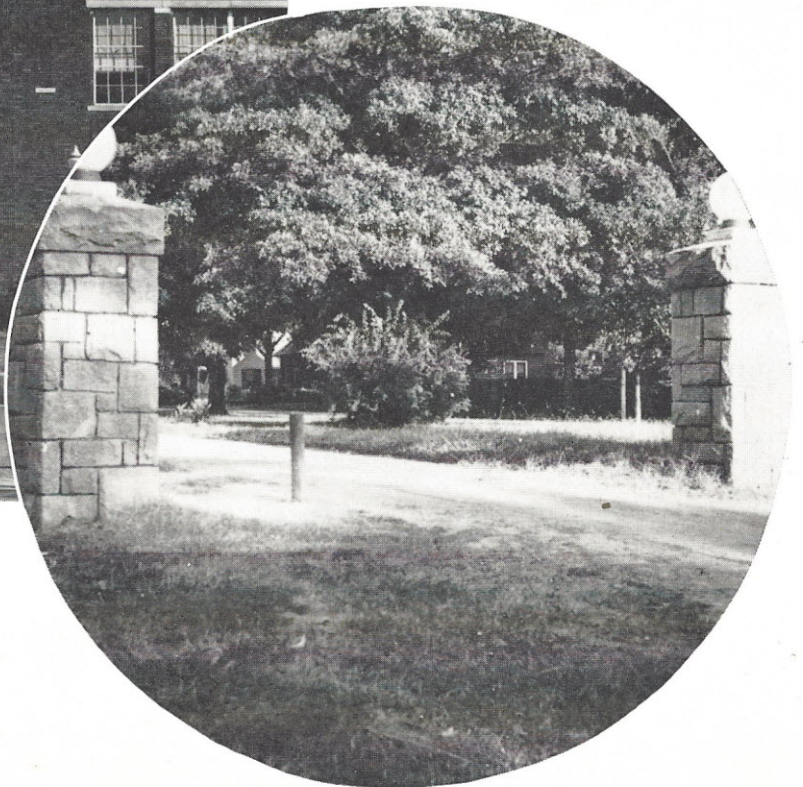
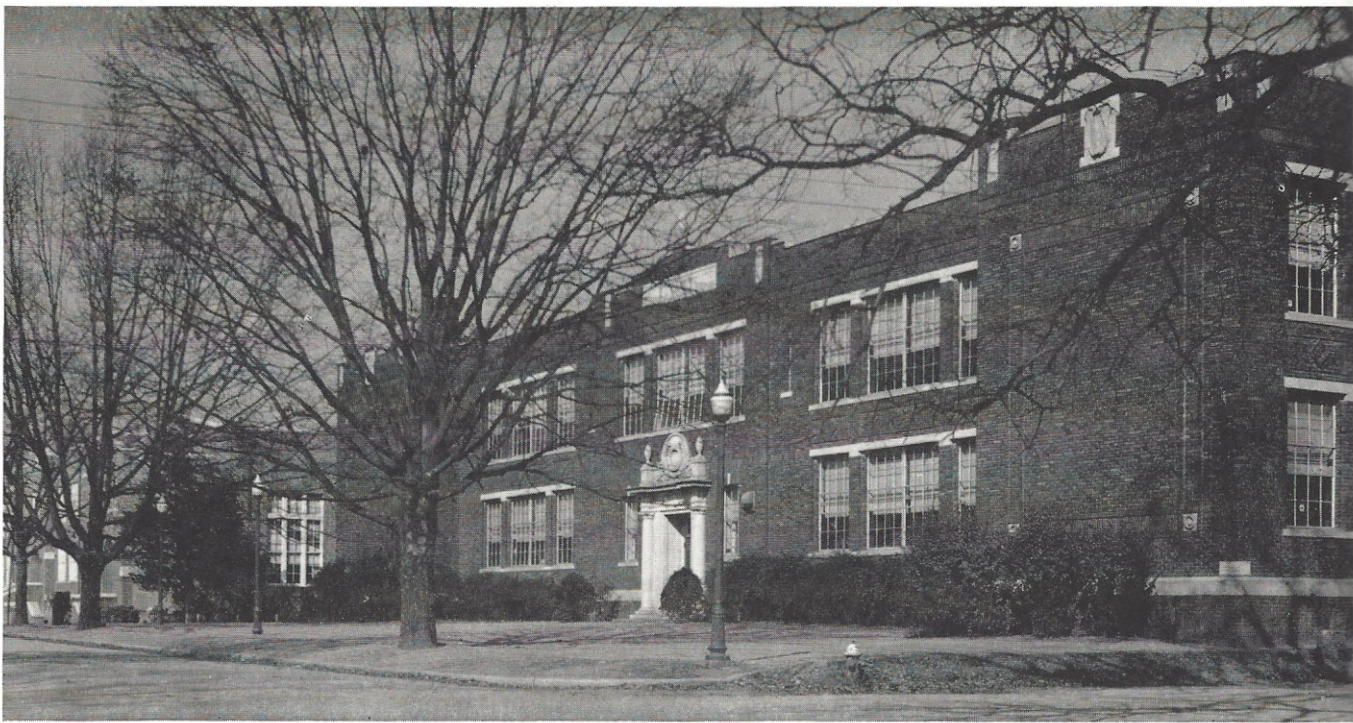
And now, we, too, children of America, are beginning to realize something of the place that is hers to fill—something of the hope that is hers to inspire. And because we are beginning to realize just how much we really love our country—"her purple mountain majesties, her amber waves of grain," above all, her great spirit of brotherhood—we, the Class of 1943, have chosen for the theme of our annual, our own land—"America the Beautiful."



DEDICATION

To those sons and daughters of Mount Zion, who through years past have served our great country—and to those who in more recent days have gone out from this institution and are giving of themselves in the great battle for Freedom—We, the Class of 1943, very proudly, yet very humbly, dedicate this the third volume of TUSITALA.





VIEWS



OUR ALMA MATER

On the hills of dear old Fairfield
Proudly stands our school;
All hail to thee, our Alma Mater,
Conquer and prevail.

Loyal students ever loving,
Honor and obey,
All hail to thee, our Alma Mater,
Mount Zion, all hail!

OUR SUPERINTENDENT

Twenty-four years ago, Grover Folsom Patton took over the duties as superintendent of Mount Zion Institute. He did not come as a stranger, for he had taught in the system some years before.

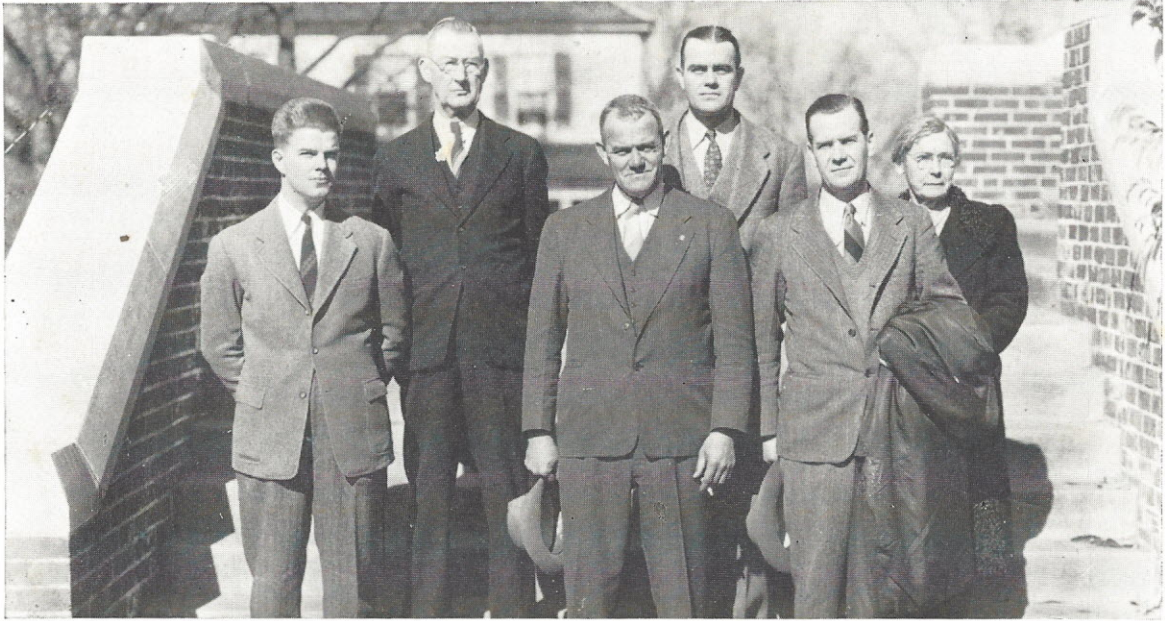
Through his years in historic Mount Zion, he has endeared himself both to those whom he has taught and to those with whom he has worked. His inspiring chapel talks have become part of the fine tradition of Mount Zion—and the "something fine," yet indefinable, that he has instilled in pupils of this institution will remain as splendid evidence of his achievement.

*affectionately
I shall remember
you always and
always with affection
G. F. Patton*

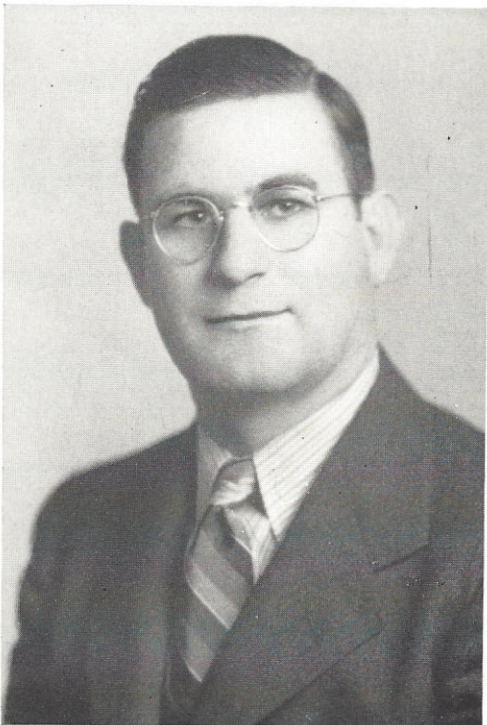
GROVER FOLSOM PATTON



The BOARD OF TRUSTEES



J. W. Jelks, A. E. Davis, Rhett Sanders, M. H. Doty, T. K. McDonald, Mrs. T. H. Ketchin, Dr. C. S. McCants, Chairman (not in picture), Mrs. S. R. McMaster (not in picture).



and the **PRINCIPAL**

ROBERT FRANKLIN HIGBE



MRS. J. C. FANT
History and Biology

MISS EDYTHE POPE
Science and Physical Education

MISS KATHLEEN LEMMON
Mathematics

MRS. R. F. HIGBE
Commerce

*Mathews Lemmon
Sorry I did not have
the privilege of teaching you.*

*Lots of luck!
Edith Pope*

*Ritta I am
glad that you
are going to be
in my room
next year but
B-c. Good-bye
Murdock*

FACULTY

Patricia... really... science... Mary... Grey...



MISS ETHEL BRUCE
Social Science

MRS. S. D. ELLISON, JR.
Home Economics

MRS. H. E. CALDWELL
English and Latin

MISS MARY GREY WITHERS
Librarian

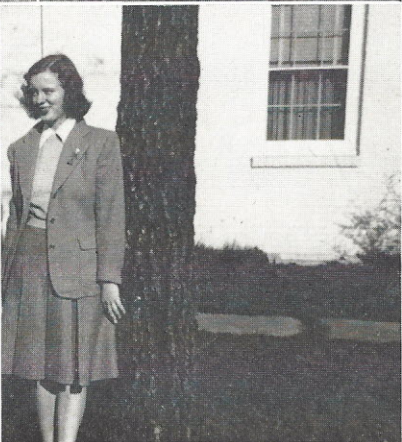
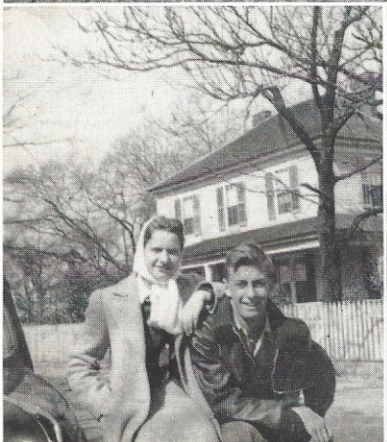
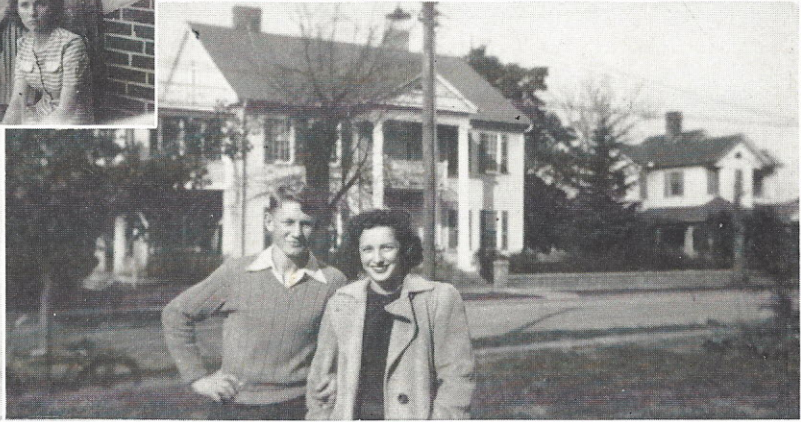
MISS PATTIE PARKER
English and Dramatics

MISS MARION RIDGEWAY
English and French

You deserve the best!

*Good wishes and love
for a good pupil.
Evelyn Caldwell*

FACULTY



Funny, ain't it? . . . Pals . . . Three heads are better than one! . . . Disgusted? . . . Three cute Seniors . . . "Et vous?" . . . Hay, there! . . . Wall flower . . . Anne . . . Mimi and Rudy . . . Betty Jo . . . Miriam.



"America! America!
God shed His grace on thee,
And crown thy good with brotherhood,
From sea to shining sea."

CLASSES



SENIOR CLASS OFFICERS

JACK ARNETTE	President
NORVELLE McMASTER	Vice-President
BOB RAGSDALE	Secretary
ODELL DARBY	Treasurer

CLASS HISTORY

Class of 1943! Seniors in a war-torn world! Let us review our high school days:

Seventy-six of us entered high school four years ago—proud to be Freshmen, yet bewildered by Algebra and Latin. Even the initiation by the Sophomores could not daunt our spirit, for as we lustily sang our Alma Mater we felt that we really belonged.

Then we were Sophomores! We felt much more at home in high school, and it was fun to order the Freshmen around! But we didn't forget our work—we were trying hard to make the Beta Club average.

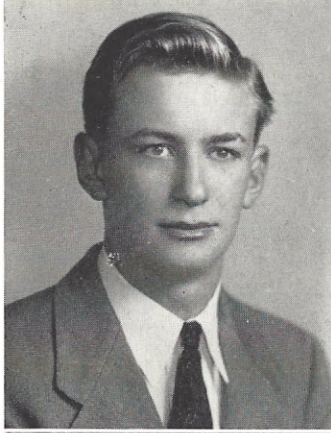
Juniors! This year we really had fun! Our theatrical career began with our production of "The Little Shepherd of Kingdom Come"—our social life had a wonderful lift with the much talked of Junior-Senior banquet and dance—and our scholastic achievement was rewarded with Beta Club membership and our entrance into the Senior Class.

Our goal was reached at last. We were Seniors! This year has been the highlight of our high school career. So many things to "keep in memory"—our sale of bonds and stamps; our class play, "Two Minutes to Go;" our Junior-Senior banquet, and commencement night, "the grand finale." Goodbye, Mount Zion! Hello, World!

BETTY JO PHILLIPS, Historian.

JOHN Q. ARNETTE

Latin Club, 1, 2; Treasurer, 2; Football, 3, 4; Class Play, 3; Class President, 1, 3, 4; Most Popular, 4; Best-all-round, 4; Beta Club, 4; Class Play, 4; Editor-in-Chief TUSITALA, 4.



MAVIS BURNIDENE BAGGOTT

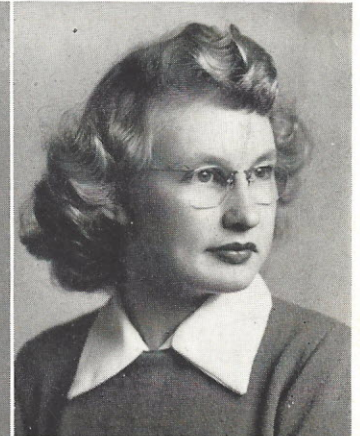
J. H. A., 2, 3; Glee Club, 2, 3; Class Play, 4.

Carry on for us next year. We sh^o will miss the old Institute.

ANN MILDRED BRABHAM

Latin Club, 1, 2; Glee Club, 1, 2, 3, 4; Basketball, 2; French Club, 3; Band, 3.

Love, Ann Mildred



MILDRED BRASWELL

Basketball, 1, 2; Latin Club, 1, 2; Glee Club, 1, 2; French Club, 3; Properties Manager, Class Play, 3; Cheerleader, 4; Beta Club, 4; Class Play, 4.

FRANCES KATHERINE CENTER

Basketball, 1; Typing Staff, TUSITALA, 4.

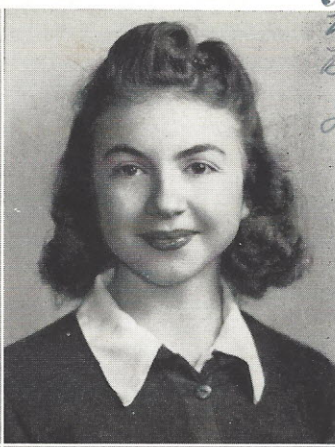
MIRIAM LOUISE CENTER

Latin Club, 1, 2; Beta Club, 3, 4; Typing Staff, TUSITALA, 4.

*Best of luck
Retha
Miriam*

*Best of luck
and happiness.
I am going
to miss you
next year.
Katherine*





*Job of such is a swell gal!
We have really had fun this
year. Be good, and take French next
year. Betta may you have the
best of everything.*

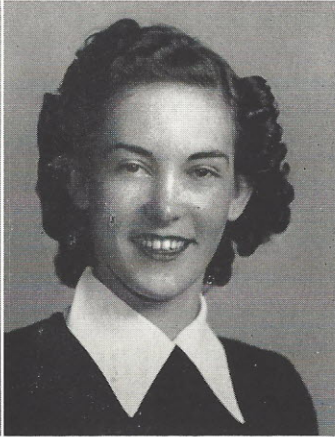
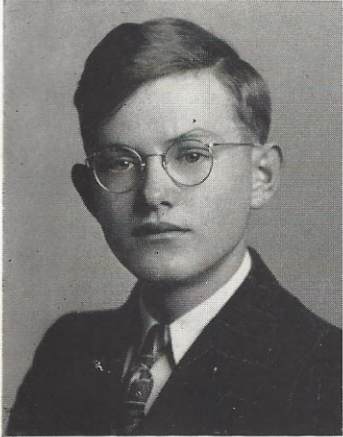
GENEVA ERNESTINE COOPER

Transfer from Williamsburg High School.

Ann

ANN ELIZABETH CROSLAND

Latin Club, 1, 2; Beta Club, 3, 4; French Club, 3, 4;
President, French Club, 4.



LUTHER ODELL DARBY

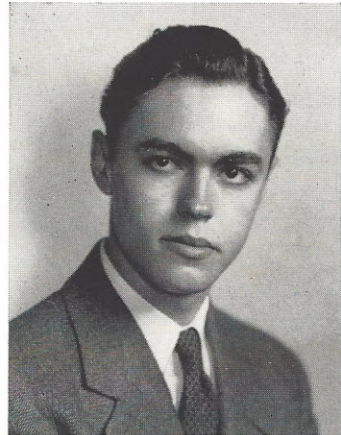
Manager, Football Team, 1; Class Treasurer, 4; Beta
Club, 4; Class Play, 4.

MRS. EDYTH HODGES DAWKINS

Transfer from Orangeburg High School; Art Staff,
TUSITALA, 4; Beta Club, 4.

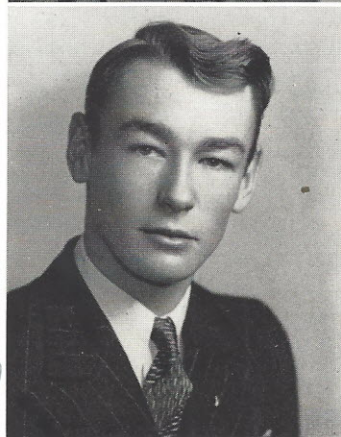
ELMER LINDSAY DRIGGERS

Latin Club, 1, 2; Basketball, 3.



CHARLES EVERETT EDENFIELD

Transfer from Dreher High School; Manager, Foot-
ball Team, 4; Beta Club, 4; Most Dependable, 4;
Assistant Business Manager, TUSITALA, 4; Class
Play, 4.

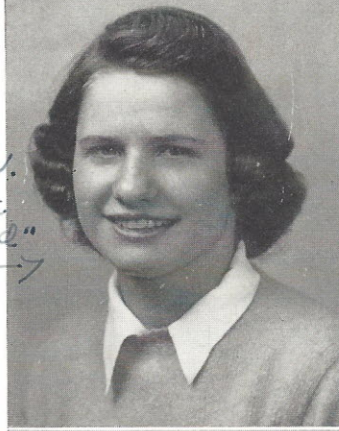


*Good Luck.
Betta, but
look out for Odell
'Charlie'*

I'm sure you have excelled in yours. It's been so much fun being with you. I'm gonna miss you lots next year.

KATE GAILLARD ELLISON

Latin Club, 1, 2; Glee Club, 1, 2, 3, 4; Basketball, 2, 3; Class Play, 3, 4; Beta Club, 3, 4; French Club, 3, 4; Secretary, French Club, 4.



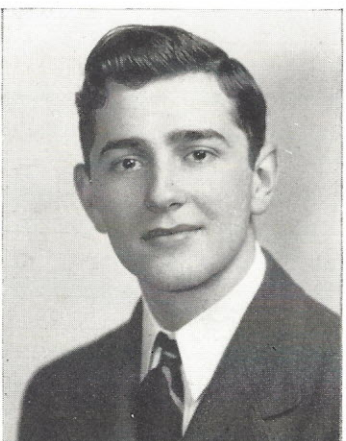
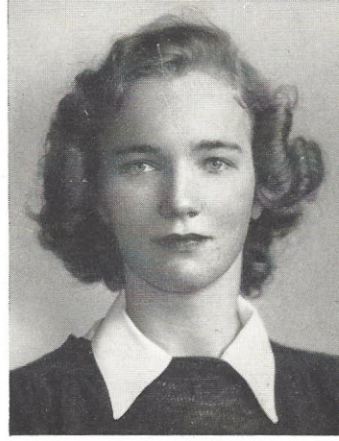
CAROLINE THORNE FUNDERBURG

Latin Club, 1, 2; Glee Club, 1, 2, 3; Basketball, 1, 2, 3; Class Play, 3; Typing Staff, TUSITALA, 4.

I'll surely miss you next yr. Good Luck - Betty

ELIZABETH FERGUSON GOUDELOCK

Latin Club, 1, 2, 3, 4; Secretary, Latin Club, 3; Vice-President, Latin Club, 4; Glee Club, 1, 2, 3; French Club, 4; Beta Club, 3, 4.



Lots of luck in the future John

EDNA EARL HALEY

J. H. A., 2, 3; Glee Club, 4.

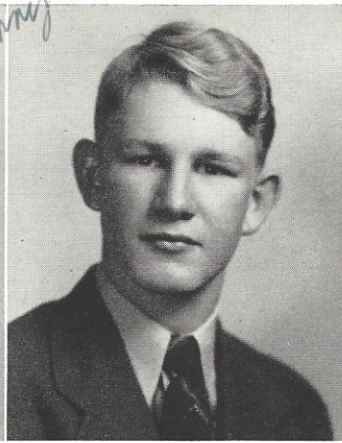
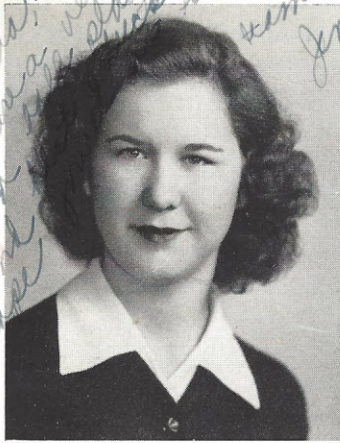
JOHN M. HAYNES

Basketball, 2; Camera Club, 2; Intramural Boxing, 2; Lieutenant, Cadet Corps, 4; Class Secretary, 3; Class Play, 3, 4; Business Manager, TUSITALA, 4; Beta Club, 4.



ROBERT TALMADGE HAYNES, JR.

Latin Club, 1, 2; Boxing, 2; Intra-mural Boxing, 2; Football, 3, 4; Lieutenant, Cadet Corps, 4; Class Treasurer, 3; Class Play, 3, 4; Beta Club, 3, 4, President, Beta Club, 4; Most Talented, 4; Most Intellectual, 4; Circulation Manager, TUSITALA, 4.



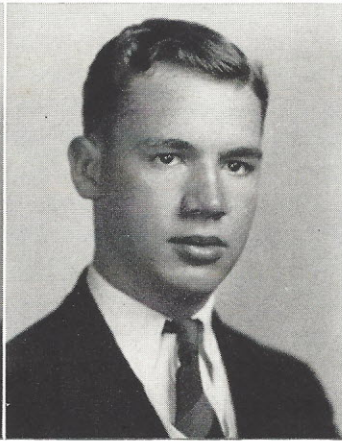
VIRGINIA HUDSON

Basketball, 1, 2, 3; J. H. A., 2; Class Play, 3, 4; Cheerleader, 4; Most Athletic, 4; Beta Club, 4; Typing Staff, TUSITALA, 4.

*Best of luck to a swell gal
Forest*

FOREST EARL HUGHES

Boxing, 1, 2; Boxing Manager, 3; Baseball, 2, 3; Manager, Football Team, 2; Football, 3, 4; Class Play, 3, 4.



VIOLA JACKSON

J. H. A., 2, 3; Glee Club, 4.

*Viola!
You are
a sweet girl
and don't forget
basketball. Love
Margaret.*

AUSTIN FREEMAN JONES

Latin Club, 1, 2; Boxing, 2; Football, 2, 3, 4; Captain, Football Team, 4; Most Athletic, 4; Athletic Editor, TUSITALA, 4.

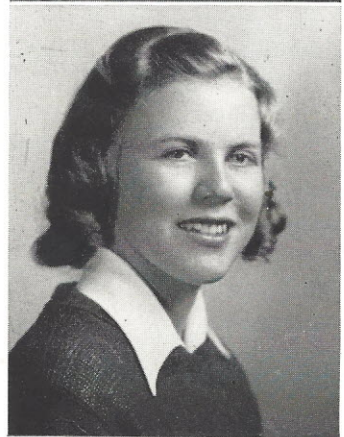
MARGARET ELIZABETH LEVINER

J. H. A., 2, 3; Basketball, 3; Beta Club, 4.



ELIZABETH MOORE McMASTER

Latin Club, 1, 2; Glee Club, 1, 2, 3; French Club, 3; Beta Club, 3, 4; Typing Staff, TUSITALA, 4.



*Best of luck
to a swell girl!
Love,
"Libber"*

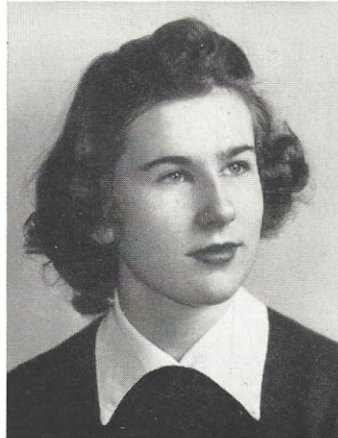
NORVELLE ATKINSON McMASTER

Latin Club, 1, 2; Glee Club, 1, 3, 4; Beta Club, 3, 4; Secretary, Beta Club, 4; French Club, 3, 4; Vice-President, French Club, 3; Basketball, 1, 2, 3; Class Play, 3, 4; Class Vice-President, 4; Best-all-round, 4; Literary Editor, TUSITALA, 4; "Miss High-Miss," 4; Salutatorian, 4.



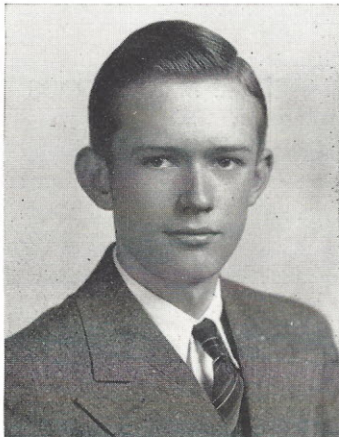
ANNA MARGARET MERCER

Latin Club, 1, 3; J. H. A., 2, 3; Glee Club, 1, 2, 3, 4; Beta Club, 4; Class Play, 4.



RACHEL DONALD McMASTER

Glee Club, 1, 2, 3, 4; Latin Club, 1, 2, 3, 4; Vice-President, Latin Club, 3; President, Latin Club, 4; Basketball, 1, 2, 3; French Club, 3, 4; Beta Club, 3, 4; Vice-President, 4; Most Dependable, 4; Most Intellectual, 4; Assistant Editor-in-Chief, TUSITALA, 4; Class Play, 3, 4; Valedictorian, 4.



*Best wishes
to a sweet girl
Love, Betty*

BETTY JO PHILLIPS

Latin Club, 1, 2; French Club, 3; Beta Club, 3, 4; Basketball, 3; Class Historian, 4.

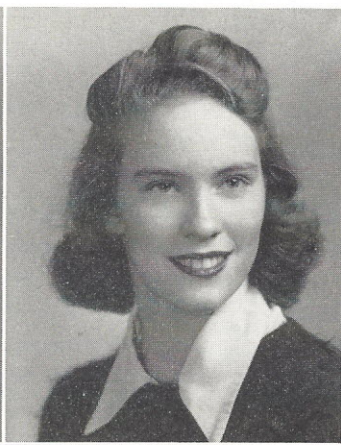


OSCAR BEAMON PULLEN

*Reckon
I sure will
miss you next
year.
Be sweet!
Love
"Bob"*

ELINOR GLENN RAGSDALE

Latin Club, 1, 2; Glee Club, 1, 2, 3, 4; Basketball, 2, 3; French Club, 3, 4; Beta Club, 3, 4; Treasurer, Beta Club, 4; Class Play, 3, 4; Class Secretary, 4; Most Popular, 4; Most Talented, 4; Snapshot Editor, TUSITALA, 4.

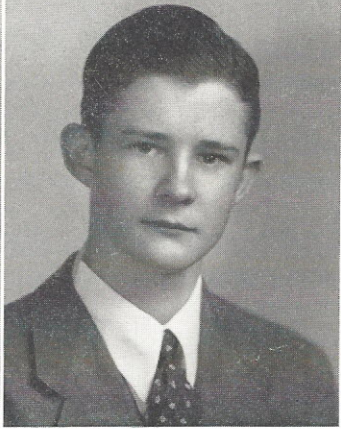
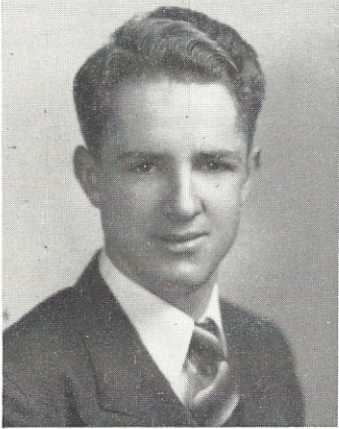


FRANCES PARNELL ROBERTSON

J. H. A., 2; Beta Club, 3, 4.

ERLEEN MAY STEVENSON

J. H. A., 2; Glee Club, 1; Basketball, 1; French Club, 3; Art Editor, TUSITALA, 4.

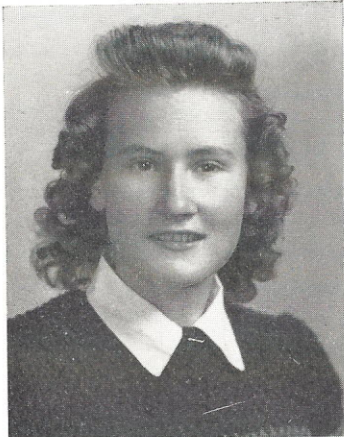


HAROLD EUGENE WATERS

Boxing, 1; Football, 4.

JAMES THOMAS WILLIAMS

Basketball, 3.

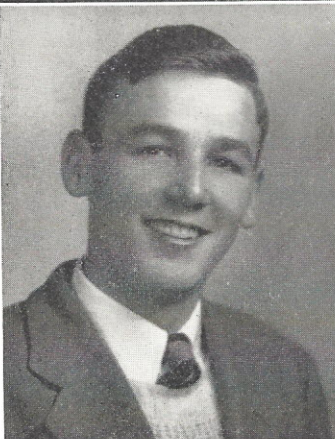


ETHEL MAE WOODS

J. H. A., 2, 3.

WILLIAM LINDSAY WYLIE

Latin Club, 1, 2; Band, 1; Intra-mural Boxing, 2; Class Vice-President, 3; Stage Manager, Class Play, 3; Beta Club, 4; Class Play, 4.

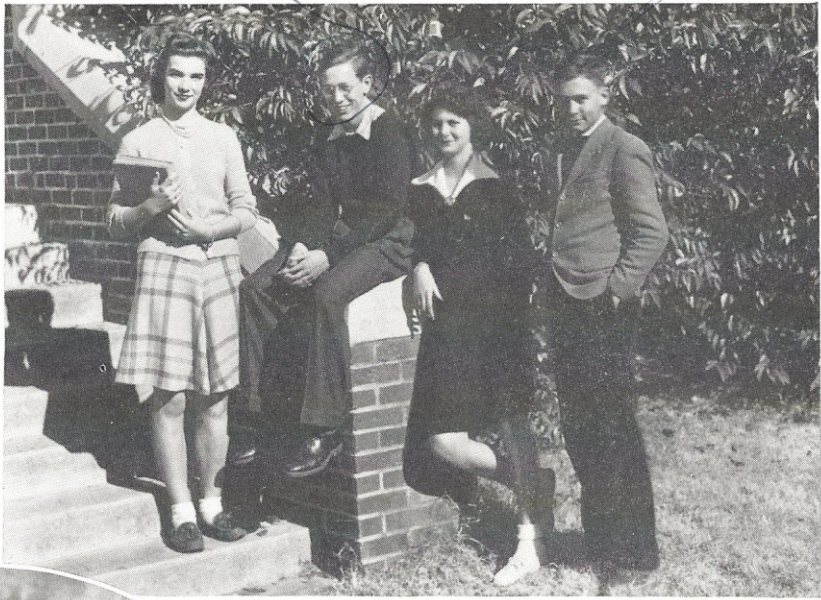


SARA KATHERINE TURNER

(No Picture)

Basketball, 1, 2, 3; Band, 1, 2, 3; Camera Club, 2; J. H. A., 2.

Funny ... O.K. date enough out of you. Lucy



JUNIOR CLASS

OFFICERS

- QUAY McMASTER . . . President
- GARY BASS . . . Vice-President
- ELLA V. GOUDELOCK . . . Secretary
- JOYCE ANDERSON . . . Treasurer

SOPHOMORE CLASS

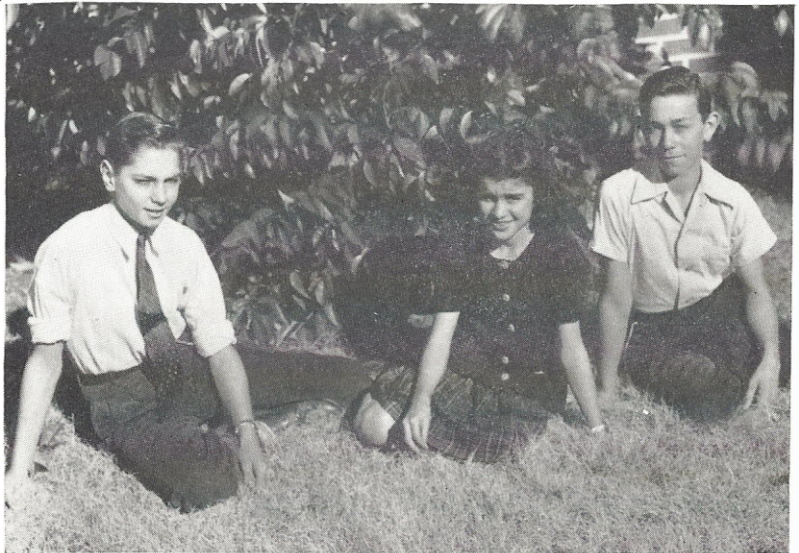
OFFICERS

- CHARLES TURNER . . . President
- TOMMY BRICE . . . Vice-President
- DAVID CRAWFORD . . . Sec.-Treas.

FRESHMAN CLASS

OFFICERS

- CREIGHTON McMASTER
President
- HAROLD BERTHOLD
Vice-President
- MILLIE JEAN COOPER
Secretary and Treasurer

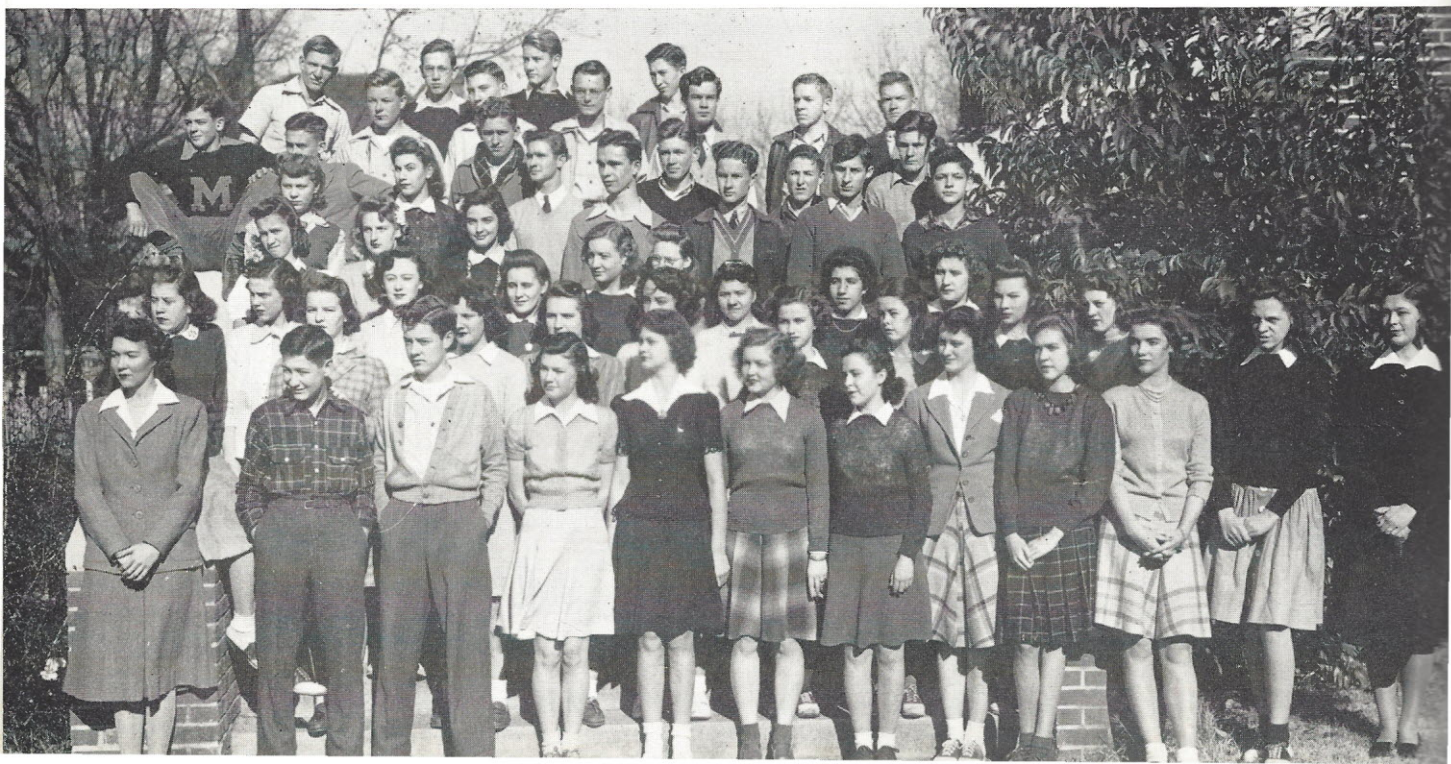


JUNIOR CLASS

AIKEN, MARSHALL
ANDERSON, JOYCE
BASS, GARY
BECKHAM, BILLY
BENNETT, JEAN
BERRY, W. C.
BRANHAM, KATHLEEN
BRANHAM, THELMA
BROWN, HELEN
COLLINS, ALICE
CRAWFORD, LILY BELL
CRAWFORD, RETTA
DAVIS, LUCY
DesPORTES, BOBBY
DOTY, BILLY
DOUGLAS, ED
ESTES, BOBBY LEE
FOWLER, CLARA BELLE
FREEMAN, MARIE
GEORGE, HENDRIX

GOUELOCK, ELLA V.
GRESHAM, MILDRED
HALL, BETTY
HICKS, BOBBY
HILL, DOROTHY
HUTTO, HOMER
KIRKLAND, FREDERICA
LEVY, EVA
MARTHES, CLAUDE
MATTOX, BETTY
McCREIGHT, ELBERT
McMASTER, QUAY
MILLER, PAT
MOLNAR, VIRGINIA
MORGAN, VIRGINIA
NORMAN, HAMDY
PARK, ARTHUR
PATE, VIVIAN
POPE, JOHN CARROLL
PORTER, BILLY

PORTER, BOYD
RAMSEY, LOUISE
RUTLEDGE, MARY BYRD
SHARPE, EVELYN
SHAW, NATALIE
SHEDD, GEORGE
SIMMS, MARGARET
SITTON, JACK
SPIRES, BILL
TANNER, CHARLOTTE
TRAYLOR, EARL
TURNER, BOBBY
TURNER, CARROLL
WELCH, ERNESTINE
WILKES, MARTIN
WELLS, REUBEN
WILSON, CHRIS
WYLIE, AMOS
YOUNG, BETTY
YOUNG, DOROTHY





SOPHOMORE CLASS

ALLEN, WORTH
 ARMSTRONG, BETTY JO
 ATKINSON, CLIFTON
 BENNETT, RAY
 BOULWARE, LOUISE
 BRANHAM, CLARA MAE
 BRABHAM, MARTHA
 BRICE, TOMMY
 CATHCART, MARY EVELYN
 CHAMBERS, MARTHA REE
 CHERRY, TEDDY
 CLOWNEY, GEORGE M.
 COKER, JEAN
 COLEMAN, FINOUS, JR.
 CRAWFORD, DAVID
 DOMINY, WALSTEIN
 DOTY, ANNE
 DOUGLASS, GEORGE
 DOUGLAS, JUANITA

GAINER, VERNON
 GOODWIN, HORACE
 GRAHAM, JOHN
 HALL, CONRAD
 HAMES, WILLIE REID
 HAMLET, OTIS
 HENNESSEE, RAY
 HEUSTESS, JOHN
 HICKS, JEAN
 HOLSONBACK, VIVIAN
 HOOVER, YVONNE
 LOVETT, RUTH
 LOWE, JOSEPHINE
 MARTHES, EUNICE
 McCANTS, GLENN
 McCLINTOCK, ANNIE
 McCRIGHT, MARGIE
 McKAY, BRADY
 McLENDON, OPHELIA

PARK, GEORGE
 PHILLIPS, PHIL
 PLYLER, BETTY LOU
 POPE, BETTY
 POSTON, HATTIE
 PRICE, DOROTHY
 PRICE, PEARL
 RABB, SADIE LEE
 SHOPE, MARJORIE
 SMITH, J. C.
 STEVENS, ANNIE RUTH
 STEVENSON, ELIZABETH
 STEVENSON, IRENE
 STRICKLIN, MARIE
 SUMMER, ROBBIE LOU
 THREATT, DONALD
 TURNER, BETTY
 TURNER, CHARLES

FRESHMAN CLASS

8th Grade

ADAMS, MAMIE LEE
ANDERSON, ARNOLD
BERTHOLD, HAROLD
BOYD, MYRELL
BRABHAM, NEIL
BRICE, HAROLD
BRICE, SARA
CARNELL, JOHNNY
CASSIDY, RAYMOND
COOPER, MILLIE JEAN
COTA, RUTH
DAVIS, OLA
DOMINY, CHARLES
DOMINY, GORDON
DOUGLAS, CARL
FAGAN, ALMA
FLOYD, BENNY
FLOYD, JOAN
FOWLER, NORRIS
GARDNER, LENORD
GARRICK, BILLY
GEDDINGS, MARY
GOODWIN, WILLIE B.
GOUDELOCK, BILLY
HALL, CHARLES
HENNESSEE, RUBY
HICKS, FRANK
HINSON, LESLIE
HOOVER, VON EVA

HORNSBY, JOE
HUGHES, JOHNNY
HUIETT, RAY
HUNT, LORETA
HUTTO, OTHELIA
JEFFCOAT, JOHN
KETCHIN, MARY JANE
KINGMAN, JIMMY
KNIGHT, BILLY
KYSE, ERSKINE
LADD, EDWIN
LANE, MINNIE RUTH
LANGFORD, KAVIE
LEVY, LOUIS
MARTIN, DORIS
MASON, JAMES
MATTHEWS, BILLY
McDONALD, MARY CARLISLE
McMASTER, CREIGHTON
McMASTER, MARIAN
McMASTER, MARY
MOSELEY, GRACE
NORMAN, JEANETTE
O'CONNELL, ISABELLE
PATRICK, HANNAH
PATRICK, IVOR
PEAKE, HAZEL
PERRY, TOM
POPE, HAYES
PORTER, BETTY

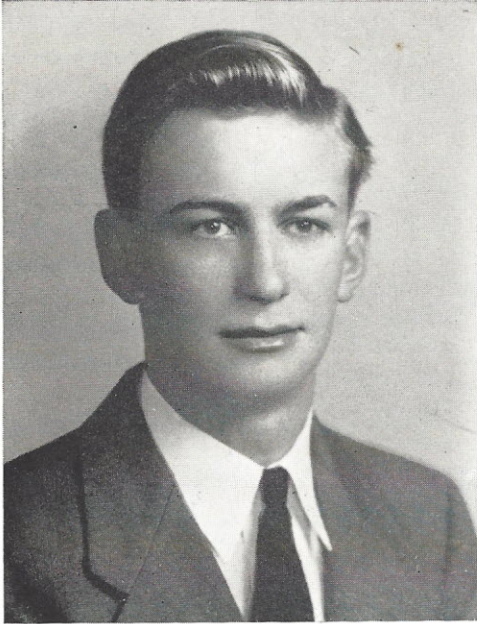
POSTON, BETTY
PYLANT, MADINE
RABB, ROGERS
RAINEY, BARBARA
REYNOLDS, CHRISTINE
RHODUS, BILLY
RUTLAND, DEETE
RUTLAND, NOMIE
RUTLAND, TOMMIE
SHARPE, CLEMMER
SHIRLEY, BEVERLY
SIMMS, ALVIN
SMITH, J. W.
SMITH, RUFUS
SPIRES, CODY
STEVENSON, DONALD
STEVENSON, JACK
STEVENSON, NAOMI
THORNTON, ELIZABETH
THORNTON, FLOYD
TRAYLOR, HAROLD
TURNER, HAROLD
WAITT, BERNETTE
WATERS, THOMAS
WEED, CHARLES
WELCH, HARVEY
WILLIAMS, MARY ALICE
WILSON, MILDRED
WYLIE, BARBARA
WYLIE, NELLE





"O, beautiful for spacious skies,
For amber waves of grain"

ACTIVITIES



JACK ARNETTE

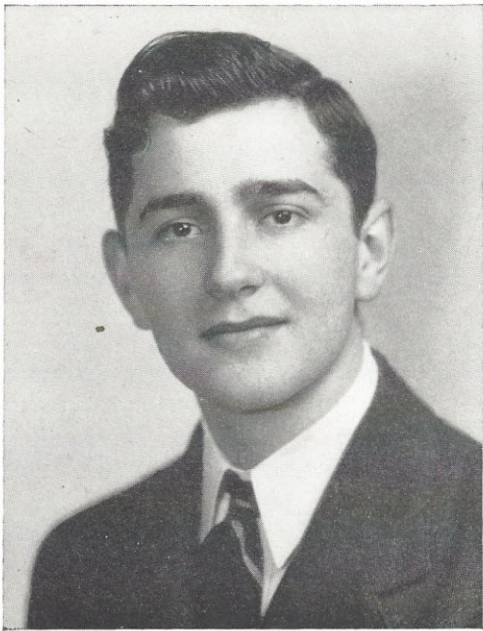
Editor-in-Chief

TUSITALA

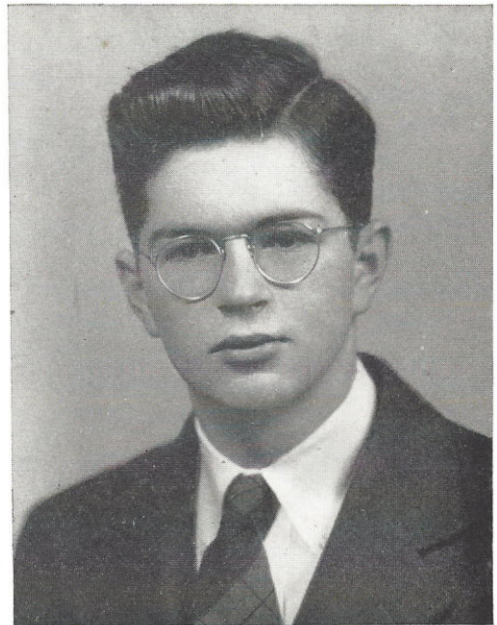


EDITORIAL STAFF

- | | |
|-------------------|-------------------------------|
| MILDRED BRASWELL | Assistant Circulation Manager |
| CHARLES EDENFIELD | Assistant Business Manager |
| BOB RAGSDALE | Snapshot Editor |
| RACHEL McMASTER | Assistant Editor-in-Chief |
| AUSTIN JONES | Athletic Editor |
| NORVELLE McMASTER | Literary Editor |
| BETTY JO PHILLIPS | Historian |



JOHN HAYNES
Business Manager



TAL HAYNES
Circulation Manager

STAFF



ART AND TYPING STAFFS

BILLY BECKHAM
VIRGINIA MORGAN
EDYTHE DAWKINS

ERLEEN STEVENSON
BOBBY TURNER
CAROLINE FUNDERBURG

ELIZABETH McMASTER
VIRGINIA HUDSON



BETA CLUB

Organized 1936

Achievement — Character — Leadership

ARNETTE, JACK
 BECKHAM, BILLY
 BRASWELL, MILDRED
 BROWN, HELEN
 CENTER, MIRIAM
 CROSLAND, ANN
 DARBY, ODELL
 DAWKINS, EDYTH
 EDENFIELD, CHARLES
 ELLISON, KATE

ESTES, BOBBY LEE
 FUNDERBURG, CAROLINE
 GOUDELOCK, BETTY
 HAYNES, JOHN
 HAYNES, TAL
 HUDSON, VIRGINIA
 LEVINER, MARGARET
 McCRIGHT, ELBERT
 McMASTER, ELIZABETH
 McMASTER, NORVELLE

McMASTER, RACHEL
 MERCER, ANNA
 PHILLIPS, BETTY JO
 RAGSDALE, BOB
 ROBERTSON, FRANCES
 RUTLEDGE, MARY BYRD
 SHAW, NATALIE
 TURNER, BOBBY
 WELLS, REUBEN
 WYLIE, LINDSAY

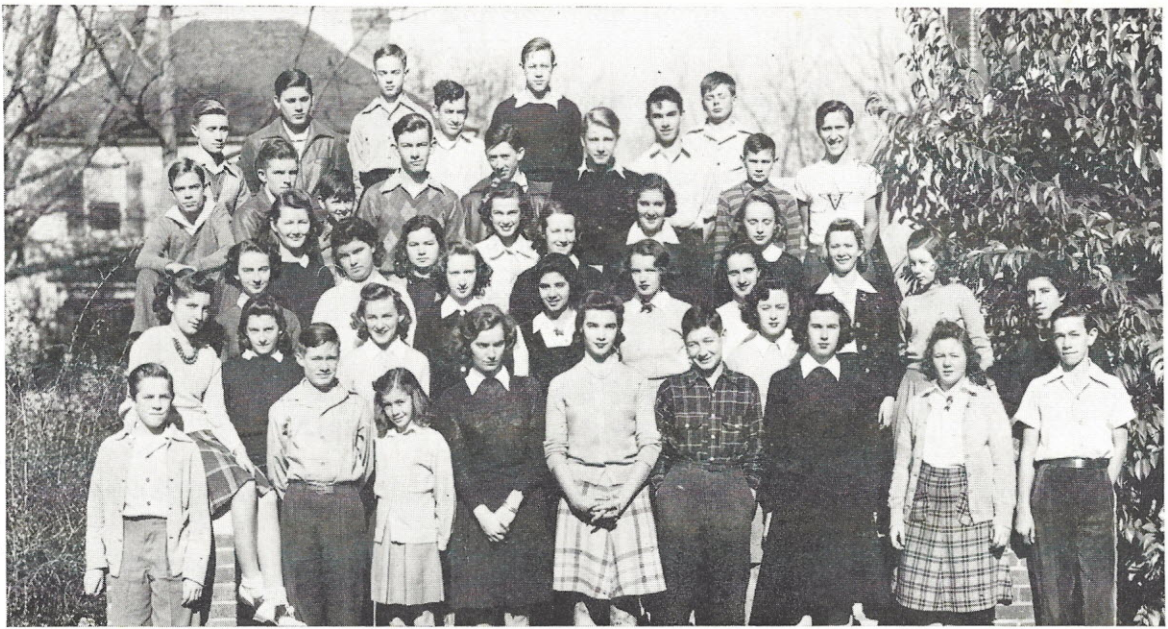


OFFICERS

TAL HAYNES	President
RACHEL McMASTER	Vice-President
NORVELLE McMASTER	Secretary
BOB RAGSDALE	Treasurer

SPONSORS

ETHEL BRUCE
 PATTIE PARKER



WINNSBORO LATIN CLUB

Organized 1927

"Forsan et haec olim meminisse juvabit"

ARMSTRONG, BETTY JO
 BECKHAM, BILLY
 BRABHAM, NEIL
 COTA, RUTH
 DOTY, ANNE
 DOUGLAS, CARL
 DOUGLAS, GEORGE
 GEORGE, HENDRIX
 GOUDELOCK, BETTY
 GOUDELOCK, ELLA V.
 HALL, CONRAD
 HAMLET, OTIS
 HENNESSEE, RAY
 HENNESSEE, RUBY

HUIETT, RAY
 HICKS, BOBBY
 HICKS, JEANNE
 KETCHIN, MARY JANE
 KINGMAN, JIMMY
 KIRKLAND, FREDERICA
 McDONALD, MARY CARLISLE
 McKAY, BRADY
 McMASTER, CREIGHTON
 McMASTER, MARIAN
 McMASTER, MARY
 McMASTER, RACHEL
 McMASTER, QUAY
 NORMAN, HAMDY

NORMAN, JEANETTE
 PARK, GEORGE
 PATRICK, HANNAH
 PATRICK, IVOR
 PHILLIPS, PHIL
 PLYLER, BETTY LOU
 POSTON, HATTIE
 PRICE, PEARL
 RABB, ROGERS
 RUTLEDGE, MARY BYRD
 TURNER, CHARLES
 WAITT, BURNETT
 WYLIE, BARBARA
 WYLIE, NELLE

OFFICERS

RACHEL McMASTER	President
BETTY GOUDELOCK	Vice-President
ELLA V. GOUDELOCK	Secretary
QUAY McMASTER	Treasurer
MRS. H. E. CALDWELL	Sponsor

Sponsor
 MRS. H. E. CALDWELL





*Always be an angle
as you have been before!
Love, Bobby Turner*

FRENCH CLUB

BECKHAM, BILLY
CRAWFORD, RETTA
CROSLAND, ANN
DAVIS, LUCY BROWN
ELLISON, KATE
ESTES, BOBBY LEE
FREEMAN, MARIE

GOUDELOCK, BETTY
GOUDELOCK, ELLA V.
HALL, BETTY
McCRIGHT, ELBERT
McMASTER, NORVELLE
McMASTER, RACHEL
NORMAN, HAMDY

PORTER, BOYD
RAGSDALE, BOB
RAMSEY, LOUISE
RUTLEDGE, MARY BYRD
TURNER, BOBBY
TURNER, CARROLL

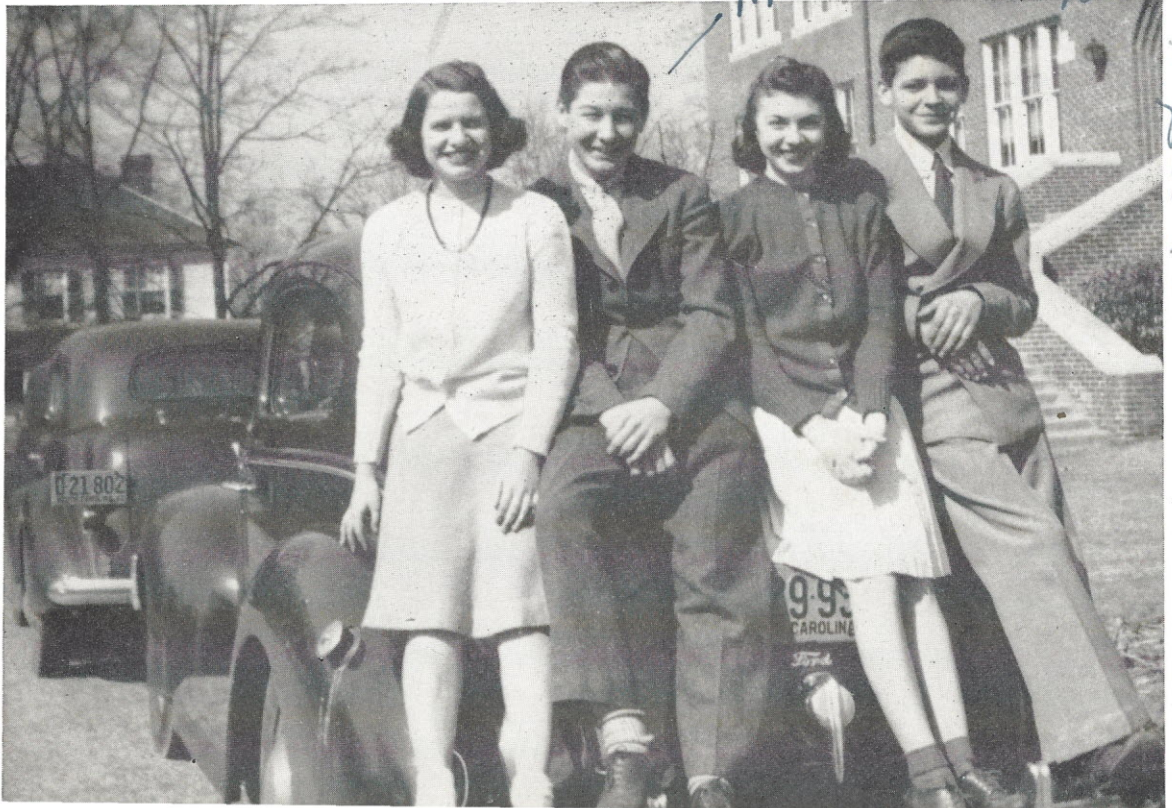
OFFICERS

ANN CROSLAND
BILLY BECKHAM
KATE ELLISON
BOYD PORTER

President
Vice-President
Secretary
Treasurer

Sponsor
MARION RIDGEWAY

*Monsieur Drill aunt
Beckham*



*just
plain
ole'
"Stin"
to go*



JUNIOR HOMEMAKERS ASSOCIATION

MOTTO: A live wire never gets stepped on.

ANNIE McCLINTOCK	President
WILLIE READ HAMES	Vice-President
LOUISE BOULWARE	Secretary
MARY GEDDINGS	Treasurer

Sponsor
MRS. S. D. ELLISON, JR.



BOULWARE, LOUISE	McDONALD, CARLISLE
BRABHAM, MARTHA	McMASTER, MARIAN
CATHCART, MARY EVELYN	McMASTER, MARY
CHAMBERS, MARTH REE	NORMAN, JEANNETTE
COTA, RUTH	O'CONNELL, ISABEL
FLOYD, JOAN	POSTON, BETTY
GEDDINGS, MARY	PRICE, DOROTHY
HAMES, WILLIE READ	RABB, SADIE LEE
HENNESSEE, RUBY	RUTLAND, DEETTE
HILL, DOROTHY	RUTLAND, NOMIE
HUTTO, OTHELIA	STEVENSON, ELIZABETH
KETCHIN, MARY JANE	TANNER, IDA DREW
LEWIS, MARGARET	TURNER, BETTY
LOWE, JOSEPHINE	WILSON, MILDRED
MARTHERS, EUNICE	WYLIE, BARBARA
MOSELY, GRACE	WYLIE, NELLE
McCLINTOCK, ANNIE	



MT. ZION GLEE CLUB

AIKEN, MARSHALL
 ANDERSON, JOYCE
 ARMSTRONG, BETTY JO
 BRABHAM, ANN MILDRED
 BRABHAM, MARTHA
 BROWN, HELEN
 COLLINS, ALICE
 DOTY, ANNE
 ELLISON, KATE
 FOWLER, CLARA BELLE

FREEMAN, MARIE
 GOUDELICK, ELLA V.
 GRESHMAN, MILDRED
 HALEY, EDNA
 HAMES, WILLIE REID
 HICKS, JEANNE
 JACKSON, VIOLA
 LEVY, EVA
 McMASTER, NORVELLE
 McMASTER, RACHEL

MERCER, ANNA
 MOLNAR, VIRGINIA
 NORMAN, HAMDY
 PLYLER, BETTY LOU
 POSTON, HATTIE
 RAGSDALE, BOB
 RUTLEDGE, MARY BYRD
 SHAW, NATALIE
 SIMS, MARGARET
 TANNER, CHARLOTTE

Director
 MRS. W. T. SPROTT



"For purple mountain majesties
Above the fruited plain."

ATHLETICS



First row: R. F. Higbe (Coach), Porter, Arnette, DesPortes, Waters, Estes, Hicks, Sitton, McMaster.
 . . . Second row: George, Thornton, Hughes, Haynes, Jones (Captain), Spires, C., Hall, Hornsby,
 Edenfield (Manager).

MZI WILDCATS





SPIRES, B.
CO-CAPTAIN



HIGBE
COACH



JONES
CAPTAIN

AMERICAN
P.P. GEORGE



GEORGE
BACK



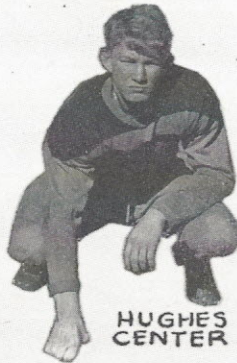
McMASTER
BACK



SITTON
BACK



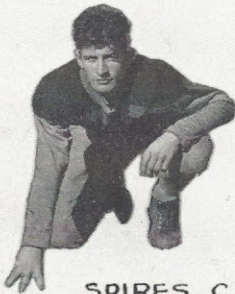
ARNETTE
GUARD



HUGHES
CENTER



HAYNES
GUARD



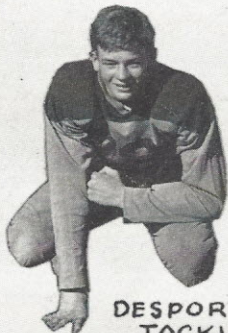
SPIRES, C.
END



HICKS
TACKLE



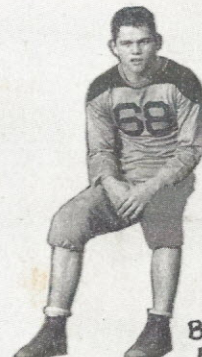
ESTES
END



DESPORTES
TACKLE



WATERS
GUARD



BERRY
BACK

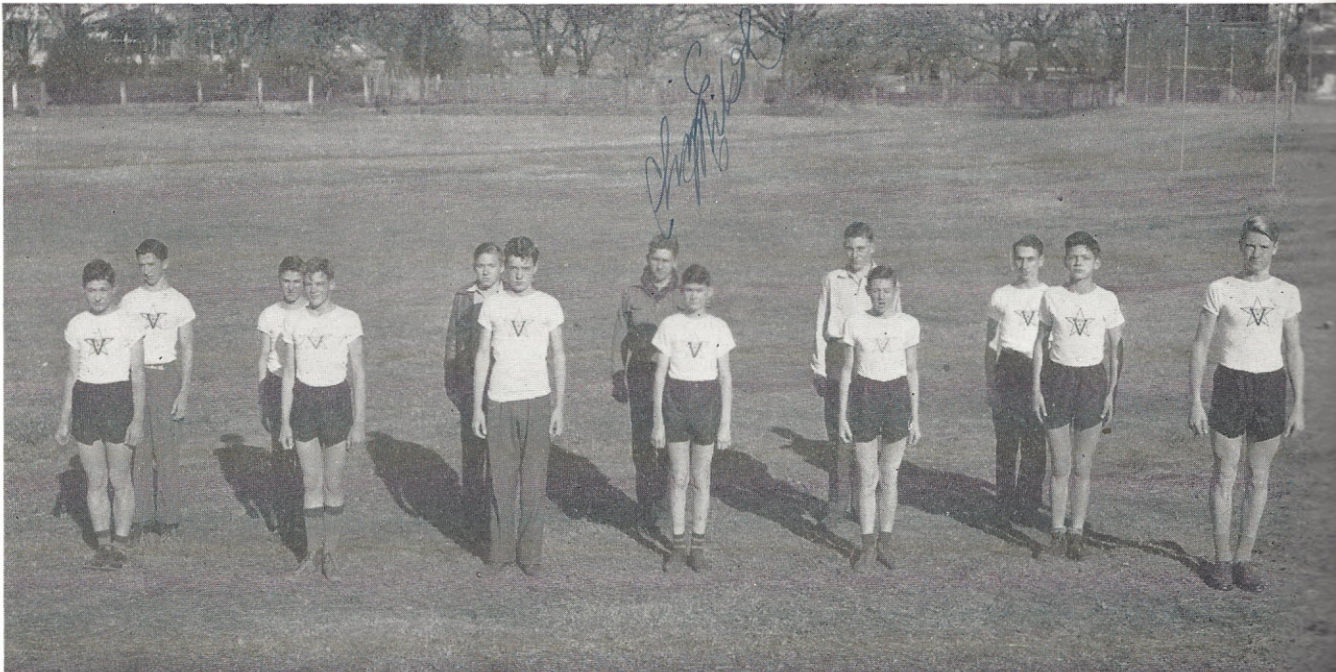
*It's been swell knowing you
 this year. Good luck. Remember the armory.
 Martin Wilke*



FIRST PLATOON
 LINDSAY WYLIE Lieutenant

CADET

SECOND PLATOON
 BOBBY HICKS Lieutenant





THIRD PLATOON
 TAL HAYNES Lieutenant

CORPS

FOURTH PLATOON
 JOHN HAYNES Lieutenant





Twins . . . A big catch! . . . Looking for someone? . . . Hold that pose! . . . Time out. . . Let's go, Wildcats! . . . Over the top in the scrap drive! . . . Town Clock . . . Mutt and two Jeffs! . . . Two of a kind! . . . Tornado hits Winnsboro.



"O, beautiful for patriot dream
That sees beyond the years;
Thine alabaster cities gleam
Undimmed by human tears."

FEATURES

Most Intellectual

RACHEL McMASTER
TAL HAYNES



Most Popular

BOB RAGSDALE
JACK ARNETTE



Most Athletic

VIRGINIA HUDSON
AUSTIN JONES

Most Dependable

RACHEL McMASTER
CHARLES EDENFIELD



Best-all-round

NORVELLE McMASTER
JACK ARNETTE



Most Talented

BOB RAGSDALE
TAL HAYNES



The Kirkpatrick home—one of the oldest in Winnsboro.



"Flirtation Walk."



The Ellison Home.



A shady lane.

ACKNOWLEDGMENTS

The staff of the 1943 TUSITALA wishes to express its appreciation to the following people and organizations for their co-operation with our annual:

To our Faculty Advisers—

Mrs. H. E. Caldwell

Miss Pattie Parker

Miss Mary Grey Withers.

To Virginia Morgan, Bobby Turner, and Billy Beckham for their able assistance with the art work.

To our friends and to the business firms of Winnsboro, who, through their contributions and advertisements, have helped to make our annual possible.

ECONOMY DRUG COMPANY

PRESCRIPTION DRUGGISTS

IN BUSINESS FOR YOUR HEALTH

Dial 225

Winnsboro, S. C.

COMPLIMENTS

OF

**Fouche and Estes
Furniture Co.**

WINNSBORO SOUTH CAROLINA

Dial 373

FURMAN UNIVERSITY

FOUNDED 1826

JOHN LANEY PLYLER, *President*

For Catalogue Write To

Dean R. N. Daniel . . . College For Men

Dean Virginia Thomas College For Women

CONGRATULATIONS

HAYNES' SHOE SHOP

Winnsboro, S. C.

*"The Store Where You Get
Your Money's Worth"*

Frank Norman & Bro.

WINNSBORO SOUTH CAROLINA

HANNA'S GARAGE

CHRYSLER AND PLYMOUTH

WINNSBORO SOUTH CAROLINA

COMPLIMENTS

OF

HORNES

Winnsboro, S. C.

CONGRATULATIONS

Class of 1943

FAIRFIELD OIL CO.

WINNSBORO

SOUTH CAROLINA

ROYAL HOTEL

AND

RESTAURANT

Prop. — Fate Thornton

Quick Lunches

Sandwiches

Steaks

Drinks

Ice Cream

PRIVATE DINING ROOM

COMPLIMENTS

OF

PHILLIPS' GRANITE COMPANY

COMPLIMENTS

OF

THE MEN'S SHOP

WINNSBORO

SOUTH CAROLINA

COMPLIMENTS

OF

Rose's 5-10-25c Store

Winnsboro, S. C.

COMPLIMENTS

OF

ROCK GRILL

Winnsboro, S. C.

H. D. Betenbaugh, Prop.

COMPLIMENTS

OF

Leitner's Beauty Salon

WINNSBORO

SOUTH CAROLINA

U. G. DESPORTES COMPANY

UNITED STATES TIRES

HAY AND FEED STUFF

HULLS AND MEALS

FARM IMPLEMENTS

WHOLESALE AND RETAIL

WINNSBORO

SOUTH CAROLINA

COLONIAL DRUG CO.

*Thank you — It's a Pleasure
To Serve You*

We Carry a Complete Line
of
Nationally Advertised Products
DIAL 5221 WINNSBORO, S. C.

COMPLIMENTS

OF

**Western Auto Associate
Store**

WINNSBORO, S. C.

COMPLIMENTS

OF

**RODDEY'S CANDY
KITCHEN**

WINNSBORO, S. C.

HOME STORES

MAIN STREET

Meats and Groceries

Fresh Vegetables

COMPLIMENTS

OF

Winnsboro Cleaning Co.

WINNSBORO, S. C.

Dial 224

Compliments

of

L. C. HARDY, Jeweler

WINNSBORO, S. C.

COMPLIMENTS

OF

FAIRFIELD FOREMOST DAIRY

WINNSBORO

SOUTH CAROLINA

ESSO DEALER

T. N. THOMAS

DIAL 420

WINNSBORO'S MOST MODERN
SERVICE STATION

COMPLIMENTS

OF

Eagle's 5-10-25c Store

WINNSBORO, S. C.

COMPLIMENTS

OF

George R. Lauderdale

Winnsboro, S. C.

CONGRATULATIONS

CLASS OF 1943

Mrs. A. B. Braswell

COMPLIMENTS

OF

**Winnsboro Chevrolet
Company**

COMPLIMENTS

OF

**Winnsboro Beauty
Shoppe**

COMPLIMENTS

OF

CAROLINA THEATER

"The Home of Better Pictures"

BOYD BROWN

COMPLIMENTS

OF

HAYNE McMEEKIN

THE NEWS AND HERALD

ONLY NEWSPAPER IN FAIRFIELD COUNTY

"Born 1844 — Still Going Strong"

Subscription \$1.50 Per Year

JOB PRINTING

OFFICE SUPPLIES

BELK'S

DEPARTMENT

STORE

HOME OF

BETTER VALUES

"HOME FOLKS"

WINNSBORO PETROLEUM COMPANY

DISTRIBUTORS

POSTAL SERVICE STATION

ROYAL SERVICE STATION Nos. 1 & 2

COMPLIMENTS

OF

WINNSBORO BLUE GRANITE

COMPLIMENTS

OF

MERCHANTS & PLANTERS BANK

SAFE . . . SANE SOUND

Member Federal Deposit Insurance Corporation

A. E. DAVIS & CO.

WINNSBORO, S. C.

HARDWARE
PURINA FEEDS

MEATS
GROCERIES

Fairfield Motor Parts Inc.

Wholesale and Retail

AUTOMOTIVE PARTS
ACCESSORIES

Dial 214

WINNSBORO

SOUTH CAROLINA

COMPLIMENTS

OF

PROPST'S

"The Home of

Better Values for Women."

CONGRATULATIONS

TO

CLASS OF 1943

BANK OF FAIRFIELD

Strength Safety Service

MEMBER F. D. I. C.

Compliments

of

Maxwell Bros. & Bolen

Winnsboro, S. C.

Meade-Villa

THE HOME OF GOOD FOOD

Highway 21

3 Miles North Winnsboro

A Clean Respectable Place To Eat

Compliments

of

**Bloodworth's
Pharmacy**

WINNSBORO MILLS

COMPLIMENTS

OF

Winnsboro Bus Station



Winnsboro Business Section as seen from the air.

Winnsboro, county seat of Fairfield, is one of the most historic towns in South Carolina. The above photograph shows the business section as seen from the air. Near the center left is the historic town clock and almost opposite is the equally famous Court House.

CONGRATULATIONS

AND

BEST WISHES

Master Ice and Fuel Co.

COMPLIMENTS

OF

FRIENDS

COMPLIMENTS

OF

WINNSBORO MILLS

Compliments

of

JOHN H. McMASTER & CO.

Prescription Druggists

"A CENTURY OF SERVICE"

Dial 228

RUFF MOTOR CO.

SALES & SERVICE

WRECKER SERVICE

Dial 215



SUCCESSFUL ANNUALS

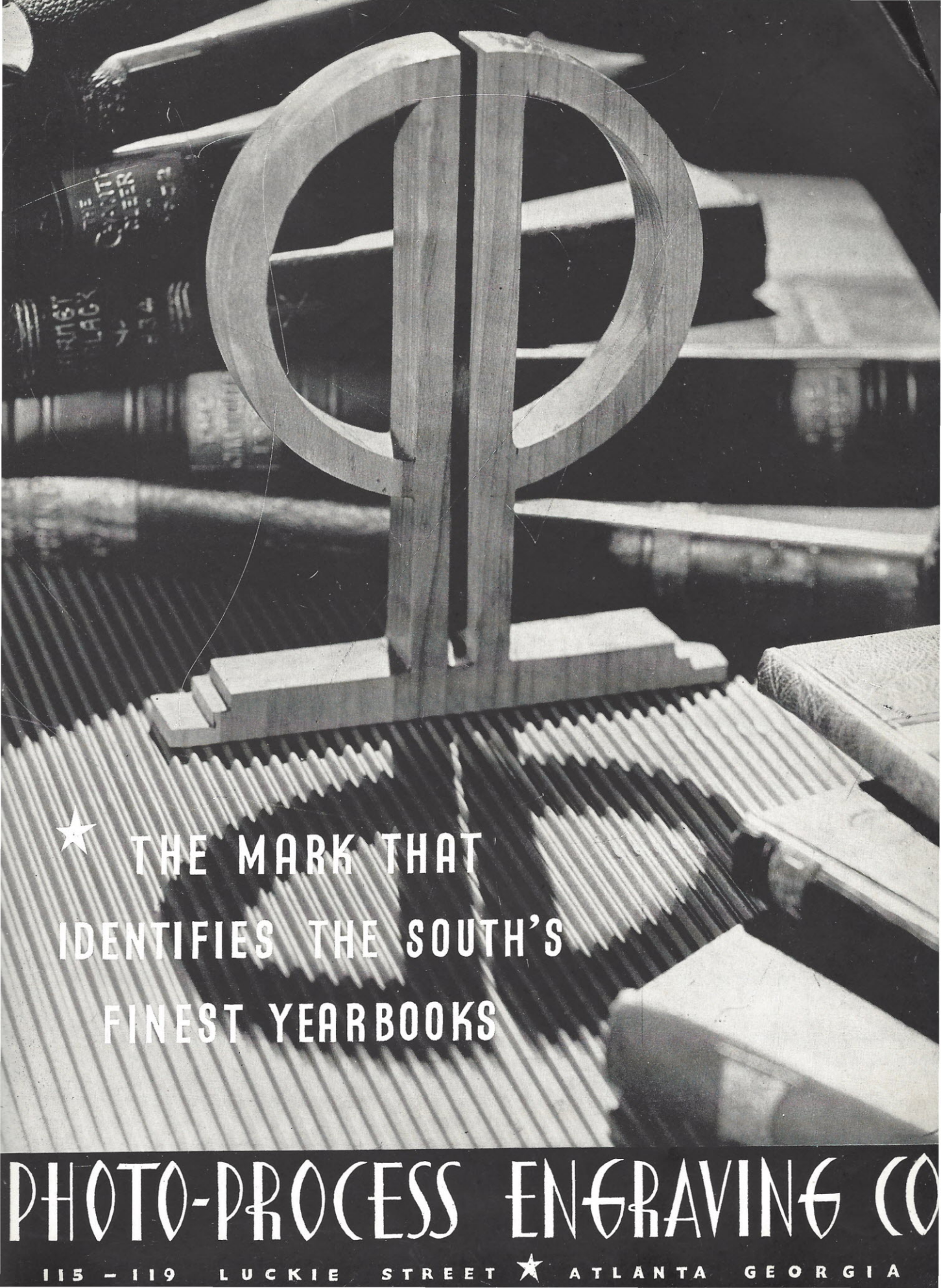
Require the services of experienced and expert craftsmen, trained in every detail of the processes of creating • planning layout and design • typesetting • printing lithographing and binding ... Throughout half a century this company has pioneered in the production of the highest type of printing ... Our services include a special college annual sales and service organization ... Abundant equipment • modern and complete ... Prices representing maximum in value



FOOTE & DAVIES

PRINTING • LITHOGRAPHING • ENGRAVING

ATLANTA



★ THE MARK THAT
IDENTIFIES THE SOUTH'S
FINEST YEARBOOKS

PHOTO-PROCESS ENGRAVING CO

115 - 119 LUCKIE STREET ★ ATLANTA GEORGIA





