

Well Crawford.
 It's about over, but we
 we had all these years. The nights we spent at each other's
 houses & the trips we taken
 here do hate for it to end
 but we write
 lots next
 year!

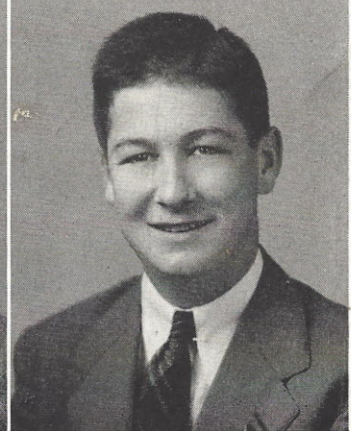
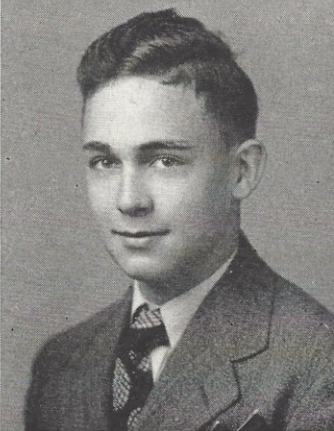
MARSHALL AIKEN

Latin Club 1; French Club 5; Treasurer 5; Glee Club
 1, 2, 3, 4, 5; Basketball 3, 5; Advertising Manager,
 Class Play 4; Cadette Corps 5; Snapshot Editor
 Class Play 5; TUSITALA 5.



NELLIE JOYCE ANDERSON

J. H. A. 2, 3; Beta Club 4; Basketball 1, 2, 3; Glee
 Club 1, 2, 3, 4; Librarian 4; Class Treasurer 3;
 Class Play 3; Cadette Corps 4; Most Athletic 4;
 Circulation Manager TUSITALA 4.



GARY FRANKLIN BASS

Boxing 1; Basketball 1; Class Vice-President 3;
 Cadet Corps 3, 4; Class Play 4.

Gosh! I wish we were
 having the play over.
 will old girl I will be
 looking at ya. Love.
 Gary



WILLIAM D. BECKHAM

Latin Club 1, 2, 3; French Club 3, 4, Vice-President
 3; Beta Club 3, 4, President 4; Band 1, 2; Art Staff
 TUSITALA 3, 4; Cadet Corps 3, 4; Sergeant 3;
 Cheerleader 3; Class Play 3, 4; Editor-in-Chief TUSI-
 TALA 4; Most Dependable 4.

JEANNE ISABELL BENNETT

J. H. A. 2, 3; Glee Club 1, 4; Cadette Corps 4;
 Typing Staff TUSITALA 4.



KATHLEEN OLIN BRANHAM

J. H. A. 2, 4; Cadette Corps 4.

Love wishes
 Kathleen Branham

SENIORS