

Seniors

MARTHA REE CHAMBERS

Fat . . friendly . . sarcastic . . Army Air Corps
 . . loves to tease . . always answers remarks
 thrown her way.

TEDDY LOUIS CHERRY

Likes to play with girls' hair . . flirty . . favorite
 expression: "Now lis'n, Babe, away wicha!" . .
 "Michaelangelo Uregeliski."

GEORGE M. CLOWNEY, JR.

"Fox" . . Wolf! . . Betty! . . "Football hero?"
 . . "Killer" . . "Moses" . . "No studying wanted
 —fun wanted."

DORIS JEAN COKER

Serious . . milk-maid in lunchroom . . dotes on
 brother Don . . jitterbug . . pet expression:
 "Aw, shoot!"

FINOUS COLEMAN, JR.

"Salty" . . egotistical Romeo . . pigskin enthusi-
 ast . . favorite expression: "Oh, me!" . . thinks
 he's got all the girls fooled.

ANNE CHAFFIN DOTY

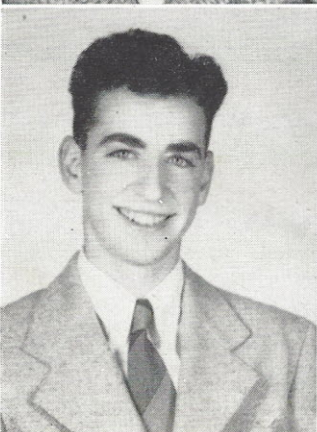
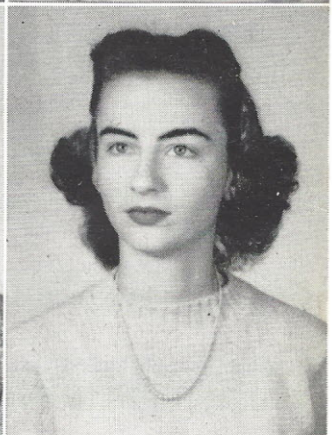
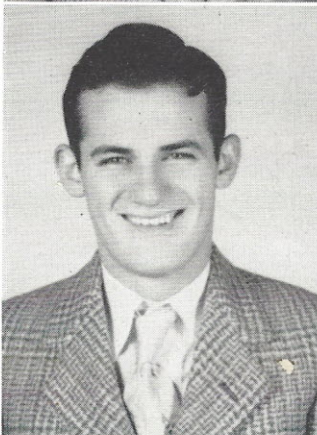
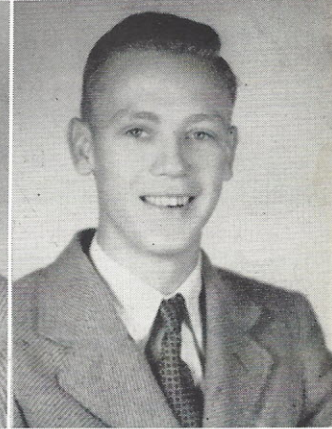
"Pianist" . . loves chocolate milk shakes . . cute
 . . poised . . swoon crooner . . ambition: to sing
 like Dinah Shore . . "Carry Me Back to Old
 Virginny."

GEORGE GREGG DOUGLAS

Frowns . . curly hair . . timid . . plays Jeff to
 Conrad's Mutt . . good sport . . "Pistol Packing
 Papa."

MELBA JUANITA DOUGLAS

Flirtatious . . University of S. C. . . petite . .
 "Miss Priss" . . chatterbox . . Carroll conscious.



George Gregg Douglas, Finous Coleman, Jr., George M. Clowney, Jr., Martha Ree Chambers, Anne Chaffin Doty, Teddy Cherry, Juanita Douglas, Doris Jean Coker