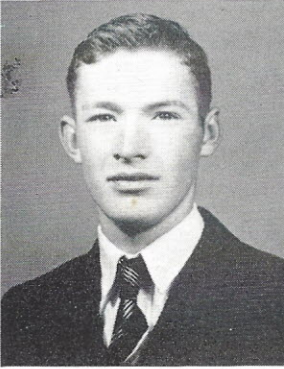
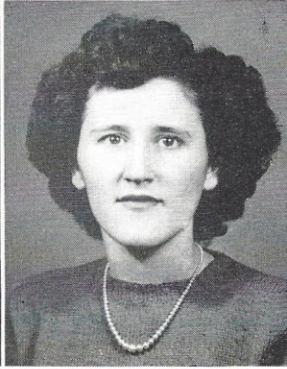


HAZEL PEAKE  
*Editor-in-Chief*

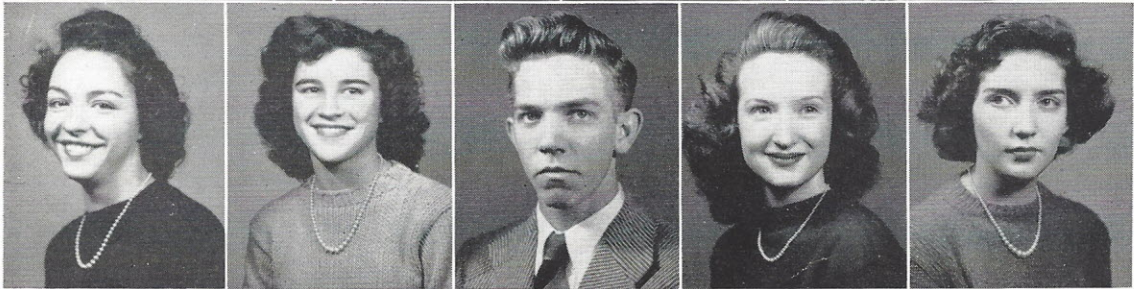
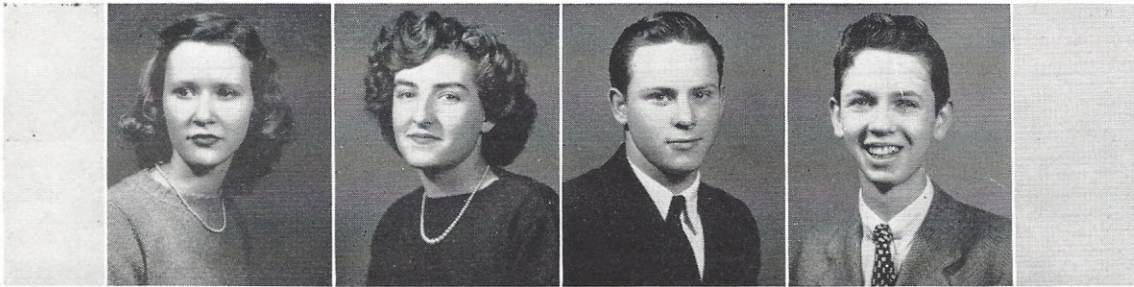
# 1946 TUSITALA STAFF



HAROLD TRAYLOR  
*Assistant Editor-in-Chief*



BEVERLEY SHIRLEY  
*Business Manager*



*Top row:* Mary McMaster, Art Editor; Minnie Ruth Lane, Athletic Editor; James Mason, Athletic Editor; Bennett Waitt, Assistant Business Manager. . . . *Second row:* Betty Porter, Circulation Manager; Millie Jean Cooper, Assistant Circulation Manager; Billy Goudelock, Literary Editor; Ivor Patrick, Assistant Literary Editor; Barbara Wylie, Snapshot Editor. . . . *Third row:* Miss Charlotte Plowden, Art Adviser; Miss Emma Hope, Business Adviser; Miss Nina Young, General Adviser; Miss Joann Woods, Literary Adviser; Miss Sara Frances Lee, Snapshot Adviser.