



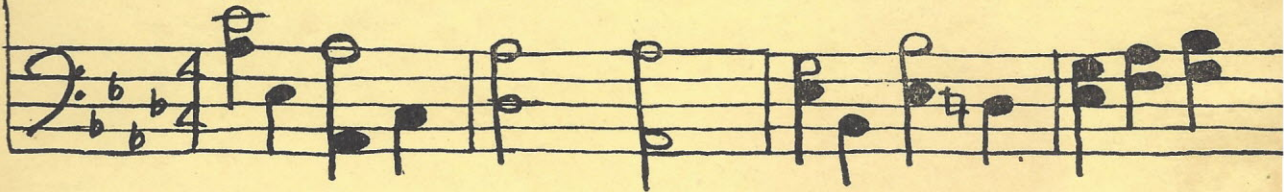
TUSITALA

1946





ON THE HILLS OF DEAR OLD FAIR-FIELD PROM-ly STANDS OUR SCHOOL



HAIL, HAIL TO THEE OUR ALMA-MATER CON-QUER AND PRE-VAIL.



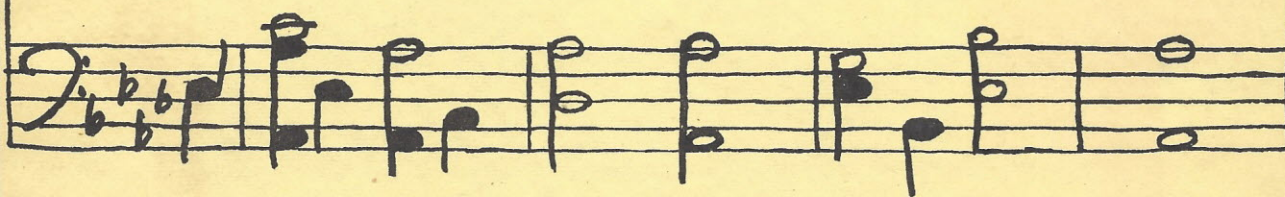




Lo-yal stu-dents ev-er lov-ing Hon-our and o - bey



All Hail to thee our al-ma-mater, Mount Zion, all Hail.









# THE SENIOR CLASS

*of*

MOUNT ZION INSTITUTE  
WINNSBORO, SOUTH CAROLINA

*Presents . . .*

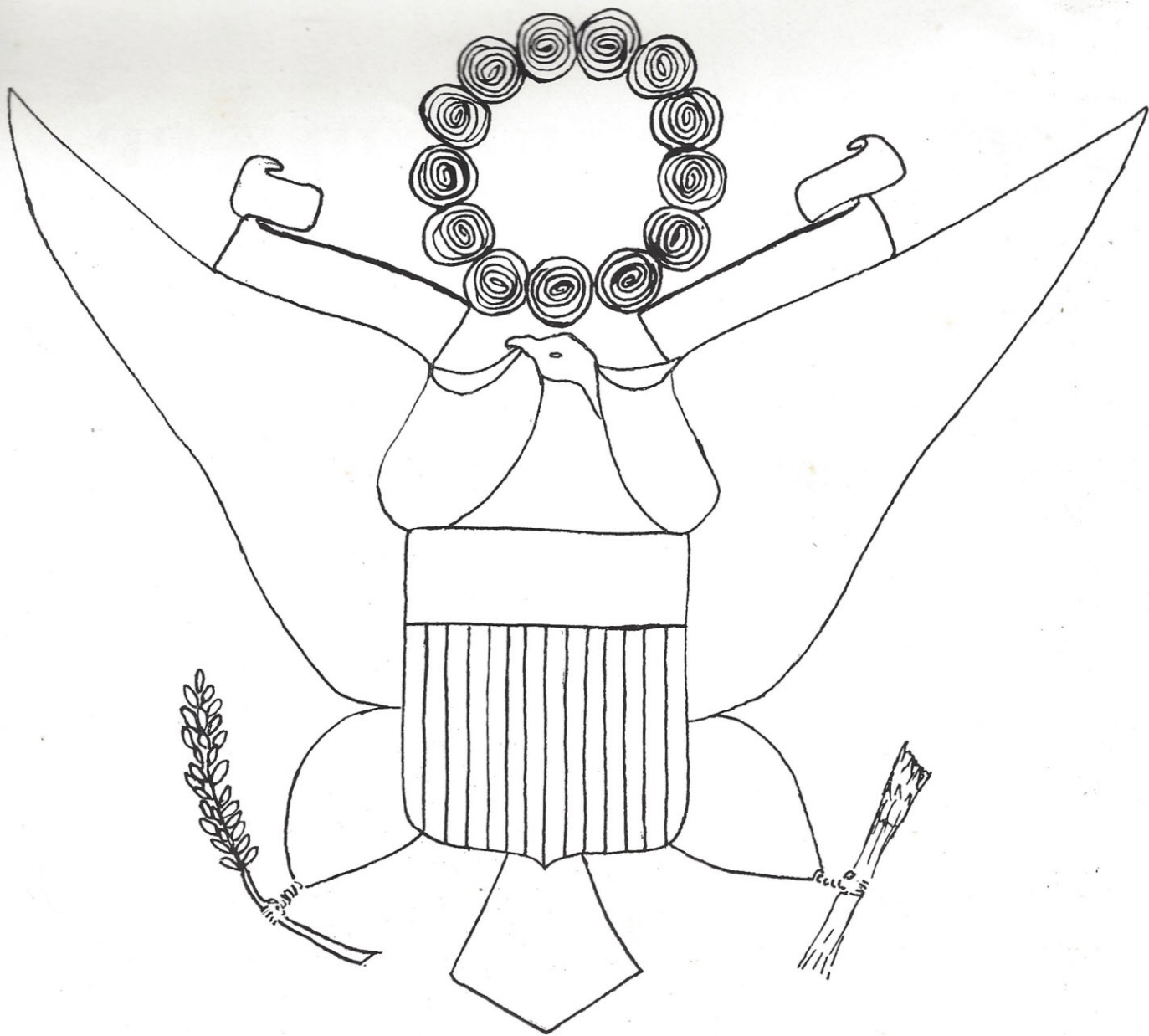
# THE TUSITALA

*of*

1946

HAZEL PEAKE . . . . . *Editor*  
BEVERLEY SHIRLEY . . . . . *Business Manager*





## IN MEMORY OF

Those former students of Mount Zion who in this war have so courageously given their time, their service, and their lives for our country, that we might be free.



## DEDICATION

We dedicate this, THE TUSITALA of 1946, to Peace, for which so many have fought and died, that it might come to all the world and be preserved throughout the coming years.



# Hello

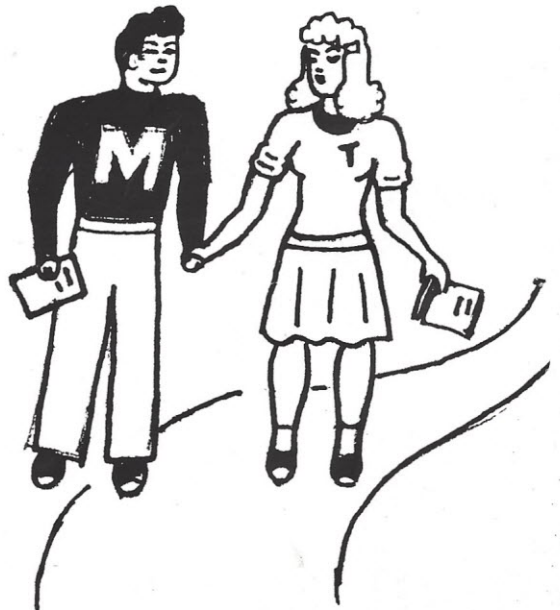
Have you met TUSI 'N TAL? Well, we want you to know them—because they represent typical Mount Zion students, and it is through them that we want to picture high school life as we have experienced it.

TUSI 'N TAL will show you that friendships, club activities, athletic contests, and hours of hard work in the class rooms are just a few of the things we will remember longest after we have left this campus.

We, the Seniors, consider that it is definitely an honor to have the opportunity to publish this yearbook. This TUSITALA will enable each of us, and every other student to relive later the joyous days at MZI.

We hope you like them—

Here are TUSI 'N TAL . . . . .



*"Proudly Stands*

*Our*

*School . . ."*

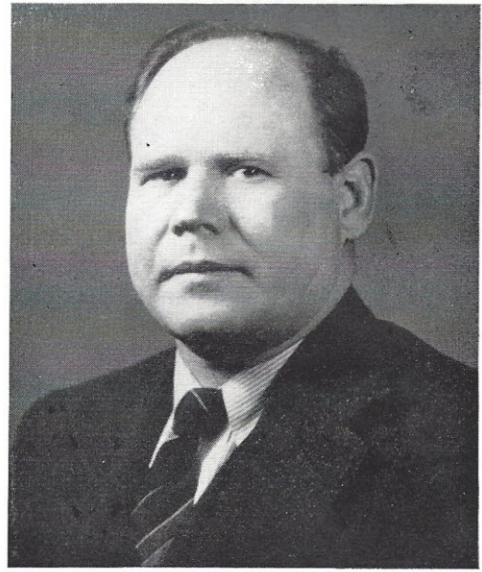




# "Honor and Obey . . ."



WILLIAM BROADUS SOUTHERLIN  
*Superintendent*



WILLIAM RUSSEL PRICE  
*Principal*

## *Board of Trustees*

For their years of co-operation and service toward making Mount Zion what it is today, we take this opportunity to honor our trustees — Messrs. M. H. Doty, Chairman; J. W. Jelks, A. E. Davis, F. R. Sanders, T. K. McDonald, J. R. McMaster, Dr. S. C. Byrd, Mrs. S. R. McMaster, and Mrs. J. S. Ketchin.

*Bill Knight*

*"In she came  
Down she sat  
She laid an egg  
and up she sat."*



Miss Louise Busch, Commerce; Mrs. Gordon Dominy, Administration Secretary; Miss Emma Hope, Social Science, Distributive Education, and Physical Education; Miss Helen Keistler, Home Economics; Miss Sara Frances Lee, English and French; Miss Kathleen Lemmon, Mathematics; Miss Mabel Merchant, Science; Miss Rae Pattishall, Bible.



Miss Charlotte Plowden, Librarian; Mrs. Coleman Stevenson, Science; Miss Mary Annelle Stuckey, Public School Music; Miss Evelyn Warner, Mathematics and Vocational Guidance; Mrs. John Wertz, Dietitian; Miss Doris Wiggins, History; Miss Joann Woods, English and Dramatics; Miss Nina Young, English and Latin.

*Joann Woods*

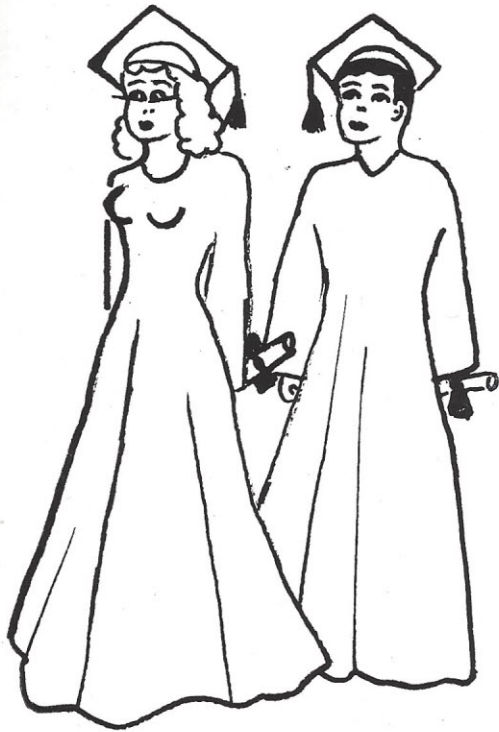




→ Luck always,  
love ya  
marie

“Loyal Students  
Ever Loving . . .”





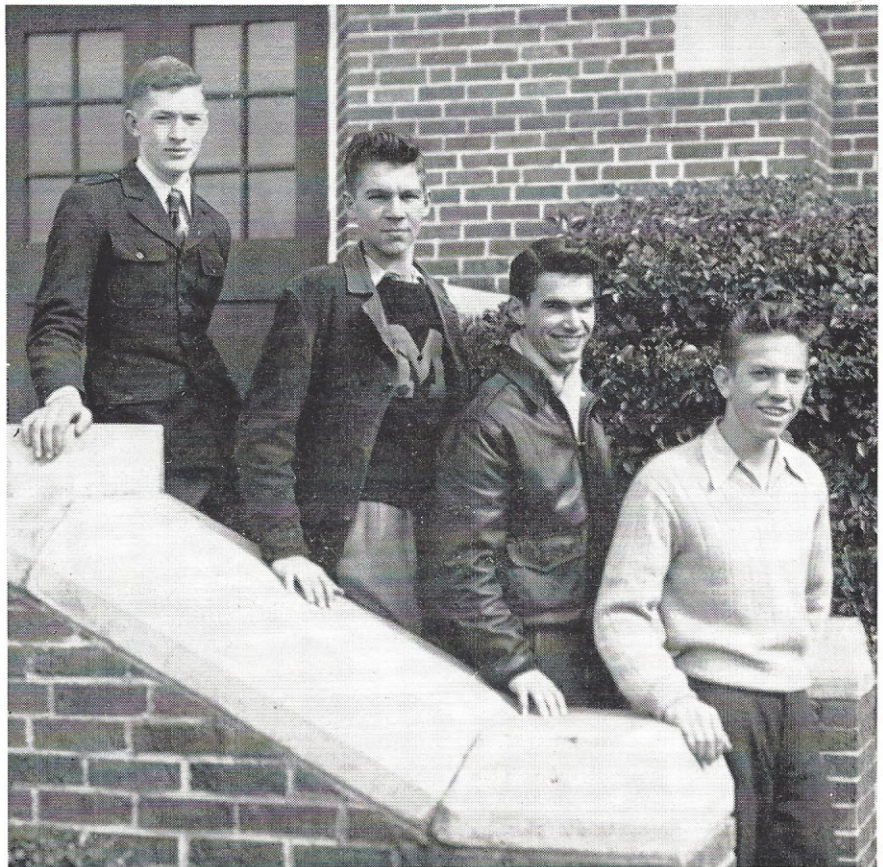
*“Serious  
Seniors”*

BILL GOUDELCK  
*President*

JIMMY KINGMAN  
*Vice-President*

HAZEL PEAKE  
*Secretary*

HAROLD TRAYLOR  
*Treasurer*





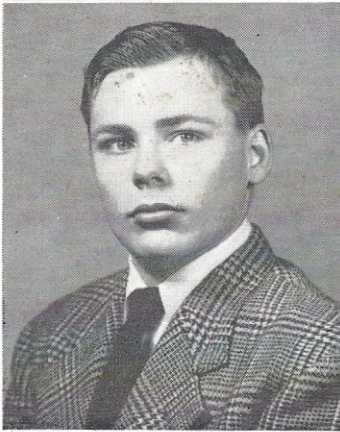


MAMIE LEE ADAMS

"Lee" . . . friendly . . . attractive . . . likes to have her way . . . likes diamonds, sailors, Georgia, "Jake" . . . "Well, I declare."

LAURA MYREL BOYD

Neat . . . quiet . . . black hair . . . slow drawl . . . very demure . . . likes Columbia and banana splits . . . "Roy" or "Samuel?" . . . "Oh, Brother!" . . . ambition: nurse.



LEWIS CORNELIUS BRABHAM, JR.

Short and stocky . . . loves to argue . . . always talking about the Austin . . . ambition: to own a radio shop.

SARAH GREGG BRICE

"Blimp" . . . short . . . blonde . . . plump . . . talks quite a bit . . . laughs unexpectedly . . . likes to do good deeds . . . Carey . . . ambition: to be a grammar school teacher.

THOMAS ALEXANDER BRICE

"Black" . . . tall and dark . . . likes to work in his shop . . . doesn't go to the show much . . . quick tempered . . . no love life, but awful willing . . . ambition: to be a mechanic.

ILA MAE CLAMP

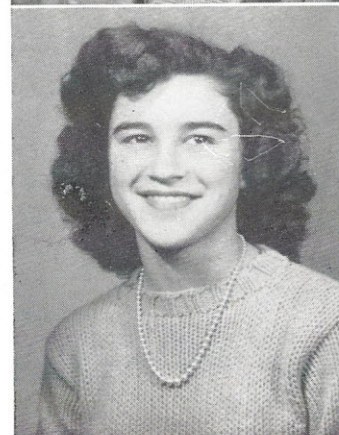
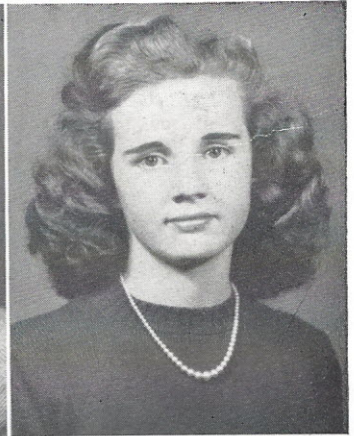
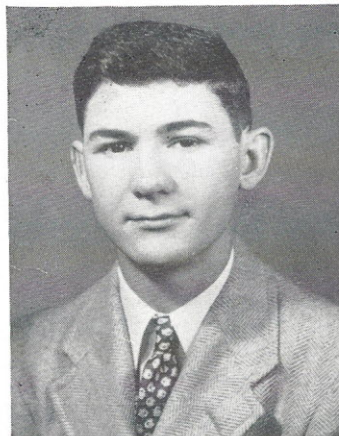
Blonde . . . blue-eyed . . . dark eyebrows . . . likes the Citadel and the Navy . . . Hollywood walk . . . love life: varied . . . dislikes being rushed . . . "Is that the truth?"

MILLIE JEAN COOPER

"Jack" . . . small but loud . . . dark brown eyes . . . quick laugh . . . likes cheer leading, football, "37," sloppy sweaters, "Croke" . . . talkative.

RUTH ELIZABETH COTA

"Ruthie" . . . bright eyes . . . brown hair . . . "You crazy nut" . . . energetic . . . friendly . . . Carl . . . likes boxers and boy scout rings.





CARL MACY DOUGLAS

"Big Sam" . . . sleepy brown eyes . . . lazy  
 . . . very quiet . . . likes to hunt and fish  
 . . . "Oh, my goodness."

JOAN NACOLA FLOYD

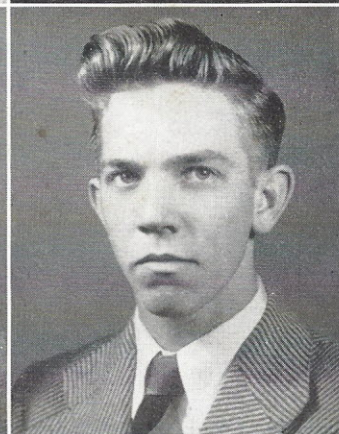
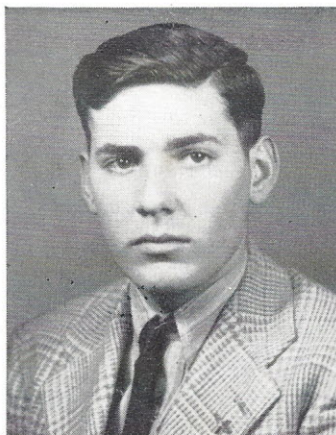
Light brown hair . . . very neat . . . shy  
 . . . ambition: to travel around . . . "Oh,  
 Barbara."

WILLIE BEATRICE GOODWIN

"Little Bit" . . . tiny and sweet . . . "dark  
 angel" . . . musical minded . . . always ready  
 to help . . . "Oh, my goodness!" . . . ambi-  
 tion: to be a singer . . . love life: Lloyd.

WILLIAM FERGUSON GOUDELOCK

"Bill" . . . "Goldie" . . . love life . . . active  
 . . . persistent . . . mumbles incessantly  
 . . . "My aching back" . . . likes wine, wom-  
 en, and song . . . studious . . . draws . . .  
 crooked grin . . . ambition: to grow up.



CHARLENE HALL

"Charlie" . . . neat . . . constant talker . . .  
 likes anything you can ride in or on . . .  
 Bert . . . flirty . . . ambition: "M.R.S. degree"  
 . . . "Oh, Brother."

LOIS VON EVA HOOVER

"Johnny" . . . curly brown hair . . . friendly  
 . . . likes to visit Columbia . . . dislikes Bing  
 Crosby . . . Hank, Jr. . . Lindsey.

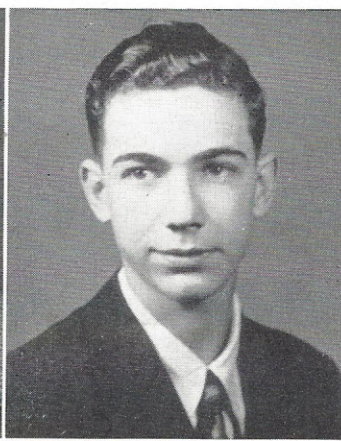
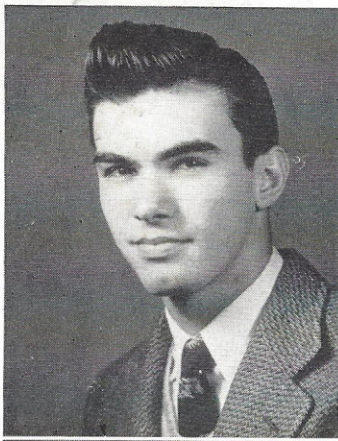
LORETTA HUNTT

"Retta" . . . cute . . . blonde . . . green  
 eyes . . . soda jerk . . . likes the Navy,  
 Myrtle Beach, pretty clothes, gray cars . . .  
 "I swanie" . . . love life: "Fox."

MARY JANE KETCHIN

"Janie" . . . friendly . . . sarcastic . . . likes  
 anything tall in the opposite sex . . . versatile  
 . . . decided ideas . . . generous . . . unpre-  
 dictable . . . talkative . . . witty.





JAMES ELMORE KINGMAN

"Jake" . . . "Doc" . . . unpredictable . . . tall, dark, and Hubba, Hubba . . . neat . . . football captain . . . Casanova at his best . . . Tennessee rambler . . . likes 'em "beautiful but dumb" . . . love life: "Toots," Bobbie . . . What a voice! . . . conceited!

ERSKINE JEREMIAH KYZER

Tall and lanky . . . likes to hunt . . . dislikes getting up early . . . likes to skip school . . . "Doggone."



EDWIN OSMOND LADD

"Shank" . . . "Mopey" . . . big laugh . . . fifty-cent words . . . corny jokes . . . "Pinocchio" in reality . . . likes women's wrestling matches . . . sandwich peddler . . . LaVerne . . . "Don't let it worry you."

MINNIE RUTH LANE

"Star" . . . cute . . . blonde . . . good basketball player . . . likes dancing, the Navy . . . dislikes to be rushed . . . "By George" love life: who knows???

MARY CARLISLE McDONALD

"Pop" . . . "All good things come in small products" . . . likes Woodberry products . . . McMaster's drug store . . . worry bird . . . crosses her bridges before she comes to them . . . love life: Frank.

MARIAN ELISE McMASTER

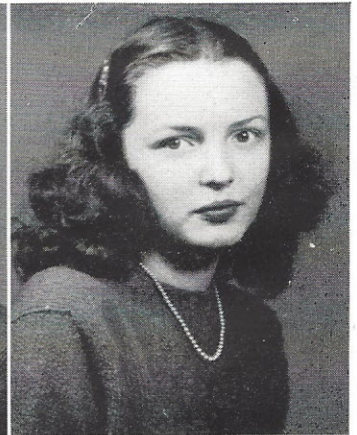
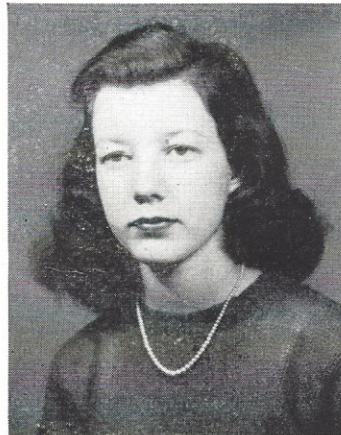
"Lise" . . . southern beauty . . . swaying walk . . . loves music . . . subject to moods . . . likes beach, air corps!! . . . ambition: to be a great musician.

MARY CARLISLE McMASTER

"Doc" . . . a striking picture in any setting . . . out-spoken . . . quick tongue . . . wise beyond her years . . . versatile . . . news bureau . . . "I told you so" . . . a future M.D.

JAMES LUTHER MASON

"Snag" . . . "Little Feet" . . . likes girls, football, and Mary . . . dislikes work . . . ambition: to play in an Army-Navy game . . . "I live for football."





JEANETTE NORMAN

"Jan" . . . sparkling eyes . . . very neat . . . friendly . . . Winthrop bound . . . dependable . . . bus trouble---Union! . . . "C.S." . . . to gain something with that smile.

LYDIA ISABEL O'CONNELL

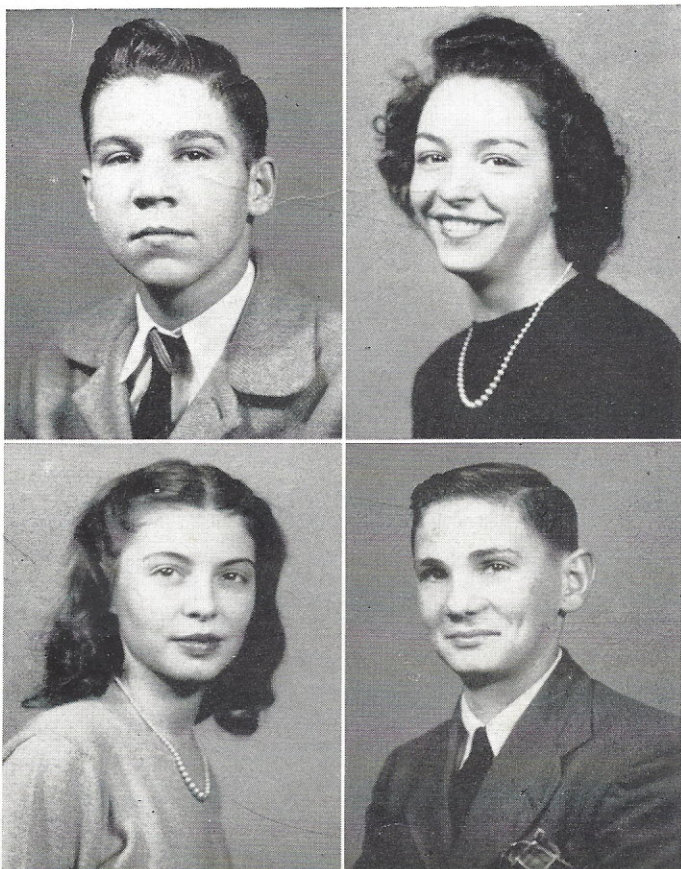
"Izzy" . . . blonde . . . quick tempered . . . talkative . . . likes lemon pie, J. E. . . . jitterbug . . . dislikes "catty people."

HANNAH BROWN PATRICK

Vivacious brunette . . . friendly . . . frolicsome . . . likes "Bo," navy wings . . . flirtatious . . . fickle . . . on the intellectual side . . . mischievous eyes . . . talkative . . . "Lefty" . . . loves mail and male.

IVOR BROWN PATRICK

"Pat" . . . forever smiling . . . quiet . . . easy-going . . . intelligent . . . blushes incessantly . . . friendly . . . changeable . . . likes bracelets, white fur mittens, football games, "Jim," "Kentucky Knights" . . . different but "defl!"



HAZEL LEE PEAKE

"Skeet" . . . dresses snazzy . . . likes to loaf . . . dislikes getting up early . . . "Never Be" . . . Nelle . . . laziness personified . . . dislikes lights on buses.

BETTY FRANCES PORTER

Big brown eyes . . . gay laugh . . . "Sarge" . . . talkative . . . likes returned veterans, athletics, dancing, basketball, bright colors.

BETTY SANDERS POSTON

"Short change" . . . short . . . dark eyes . . . pretty . . . likes football players . . . Heyward . . . "Oh, my cow."

ROGERS LITTLE RABB

"Ra-Little" . . . "Dynamite comes in small packages" . . . merry as the day is long . . . twinkling eyes . . . fun-loving . . . witty . . . likes the finer things of life, the main street of White Oak . . . "Very funny."





**BARBARA VERNETTIE RANEY**

Long brown hair . . . promotes the taxi business . . . Beta brains . . . quietly efficient . . . neat . . . willing to help . . . always busy.

**BEVERLEY JUNE SHIRLEY**

"Becky" . . . cute grin, starry-eyed . . . incessant talker . . . likes Navy, "Van," "Bud," football games, basketball and dancing . . . dislikes sad shows . . . ambition: to destroy all shorthand books . . . "That's tough."

**MARGARET LOUISE SMITH**

"Trigger" . . . short . . . baby face . . . likes black Ford . . . "Well, whad'ya' know" . . . love life: discharged sailor!

**VIRGINIA NAOMI STEVENSON**

"Nay" . . . cute, red-haired . . . freckles . . . likes marines . . . love life: Jr. . . . blushes . . . ambition: to get a man! . . . "My cow!"

*Best of every thing to you in the future. Bennett*

**GEORGE HAROLD TRAYLOR**

"Red" . . . red hair plus freckles . . . bashful . . . "Silence is golden" . . . Mary . . . disarming smile . . . likes to think he is a good bus driver . . . ambition: to be a forest ranger.

**BERNETT MONROE WAITT**

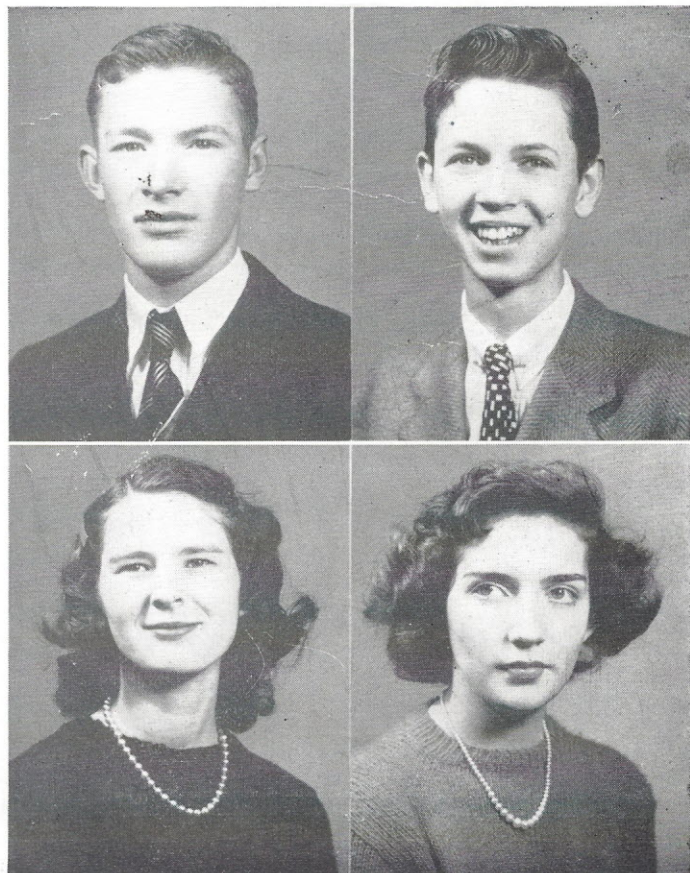
Weight: "Flea" . . . small of stature . . . large of mouth . . . likes food, music, and blondes . . . ambition: to be editor of the News and Herald . . . Georgia Peach . . . "Gee, thanx Lou."

**MARY ALICE WILLIAMS**

Tall, skinny, baby-blue eyes . . . reserved . . . studious . . . likes red heads . . . love life: WHO KNOWS???

**BARBARA GENE WYLIE**

"Bob" . . . feather-bob . . . Gay's nurse . . . afraid of chickens . . . "imple" . . . shuffling walk . . . quick wit . . . domestic . . . silent laugh . . . friendly . . . "Three cheers for the Navy" . . . easy-going . . . "Raw."







LOIS ANNELLE WYLIE

Two-tone hair . . . numerous clothes . . . likes Chopin . . .  
love life: "Variety is the spice of life" . . . competent . . .  
"Very funny" . . . Betty Grable legs.

*Not pictured:*

TRAYWICK SEVESTA BROOKS

WILLIAM HENRY PORTER

CHRISTOPHER DANIEL WILSON

## CLASS HISTORY

Four years ago, we, the senior class of 1946, began our high school days as all poor freshmen do. Greeted with the inevitable disdain, mockery, and the paddle-and-barrel ritual, we lost any previous self-confidence as we became the target for numerous sophomore pranks. In time, the sophomores, having exhausted their abundant supply of jokes and impossibilities, began to consider us fairly acceptable human beings, and we gradually became a part of high school life.

The beginning of our next year brought sighs of relief as we "wise fools" took the whip into our hands, promptly forgetting the sympathy that we had felt for all freshmen. Our days became routines of studying . . . marching . . . studying . . . marching — until spring brought the traditional Junior-Senior Banquet and an exciting glimpse of the life of upperclassmen.

Slipping quietly into our junior year, we soon discovered that being upperclassmen was no picnic. With a minimum of sleep, studying, and the other minor things of life, we found our days crowded with classes, extra-curricular activities, and treks behind the ole' yellow bus loaded with the Wildcats. And were we proud of that "Junior-star-studded-football team!" About the middle of February our headaches had only begun as we started rehearsals for our first exhibition of class talent, and began our harassed plans for Junior-Senior. The night of March 2, 1945, proved that our efforts were more than rewarded. And, incidentally, we were more than relieved to discover that "The Ready-Made Family" had made us financially able to give the seniors one last fling at their Junior-Senior! Then, at last, when we could

order our class rings, we suddenly realized that our "dignified senior" year was soon to become a reality.

We began our senior year with lighter and more care-free hearts; for during the wonderful preceding summer, World War II had come to an end. Our school life continued to be a rush of club meetings, athletics, and class meetings to settle those issues of "senior importance." Enthusiastically working toward a larger post-war TUSITALA, we could hardly realize that it was our time to give the school its annual. With the completion of our work on the annual, we started looking forward to the production of our senior play. Proceeds from the play, presented early in May, helped to make this TUSITALA possible.

Senior activities, climaxed by our Junior-Senior, brought the realization that our high school days were nearing an end. Amazing as it seemed, no sense of joy came with this realization.

Our last days at Mount Zion were never-to-be-forgotten ones. All the things that make a high school graduation wonderful were part of them — invitations, gifts, Class Day, and then, half-dreaded and half-anticipated — the highlight of our high school careers — Graduation!

And now looking back upon those first hectic days we see them as only stepping stones to the glorious ones which were to follow. As we leave Mount Zion, we know that our memories of days spent here will forever endear it to us.

NELLE WYLIE, *Historian*



# Best All Round



JIMMY KINGMAN  
MILLIE JEAN COOPER

**Service**



# Most Intellectual



**Learning**

IVOR PATRICK  
BILL GOUDELOCK



# Most Popular



HAZEL PEAKE  
NELLE WYLIE

**Friendliness**



# Most Athletic



**Co-operativeness**

JAMES MASON  
MINNIE RUTH LANE



# Most Versatile



BERNETT WAITT  
HANNAH PATRICK

**Efficiency**



# Most Dependable



**Honesty**

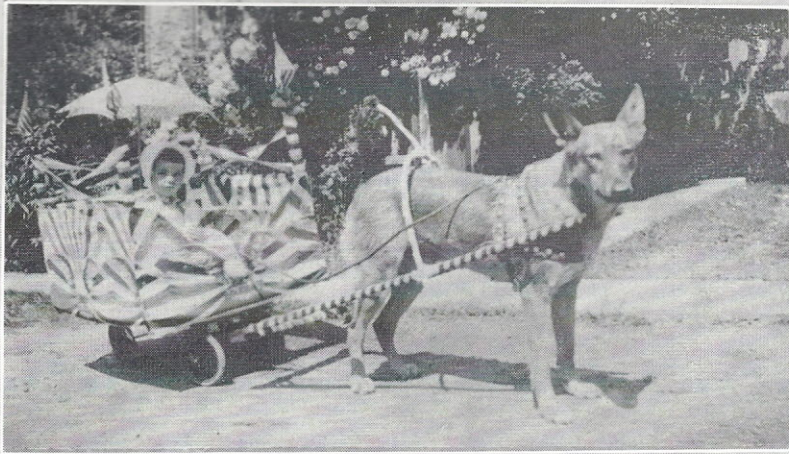
HAROLD TRAYLOR  
BEVERLEY SHIRLEY



# As We Were



1



2



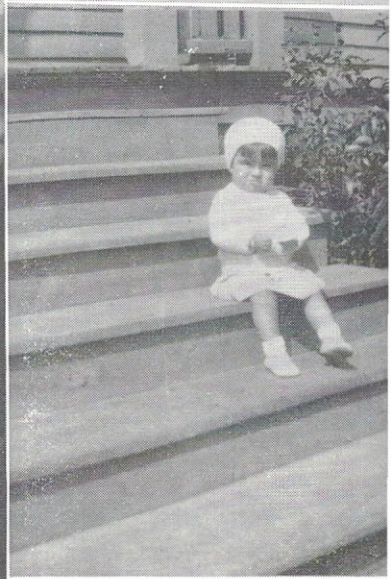
3



4



5



6



7



8



9

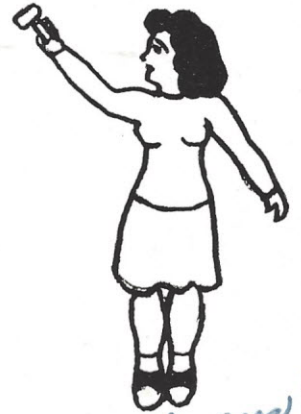
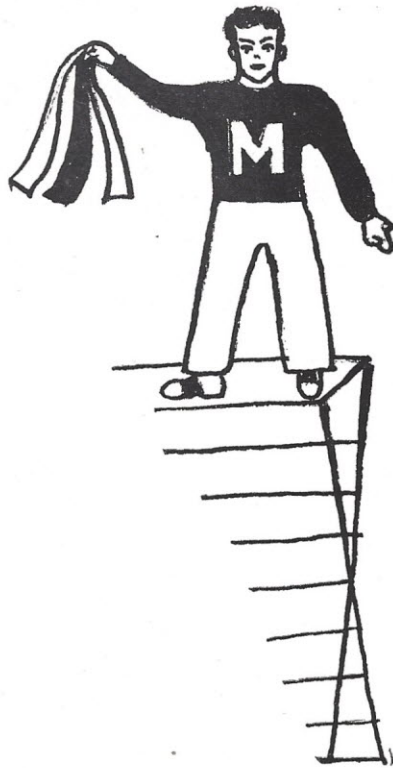
1. Mary McMaster  
2. Ruth Cota  
3. Nell Wylie

4. Carlisle McDonald  
5. Hannah and Ivor Patrick  
6. Nellie Jean Cooper

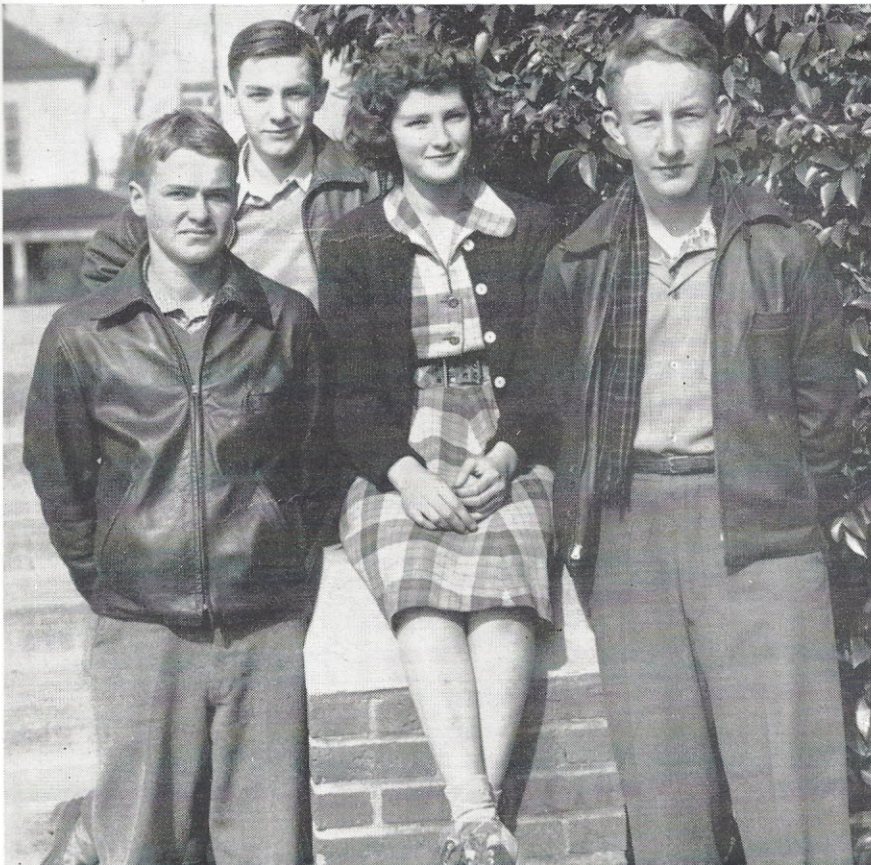
7. Betty Porter  
8. Barbara Wylie  
9. Marian McMaster



“Jolly  
Juniors”



*Best of luck always!  
You deserve it!  
Love,  
Sara!*



SARA SHAW  
President

LUTHER DUNN  
Vice-President

JIMMY STEPHENSON  
Secretary

JOHN DARBY  
Treasurer



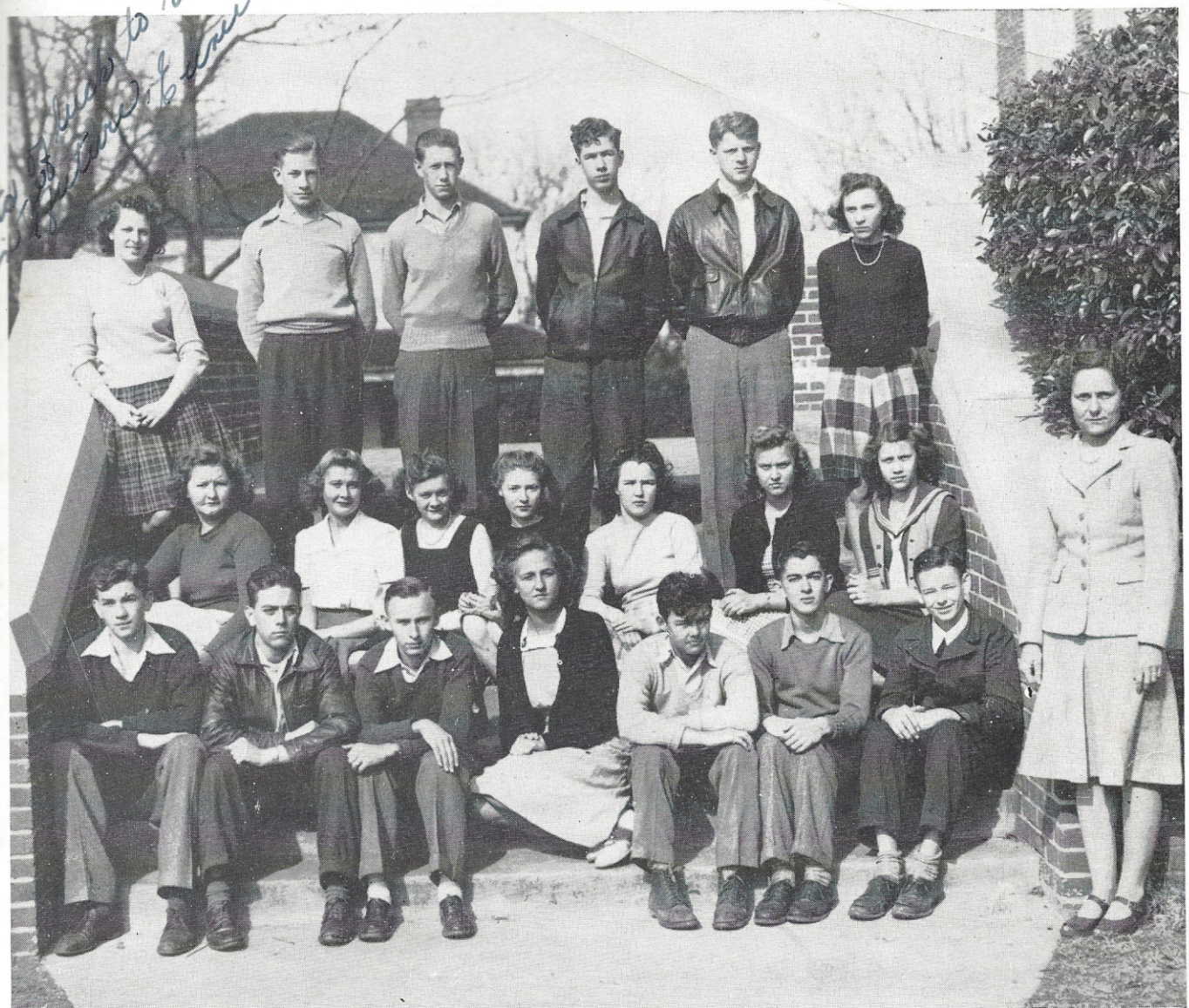


EDDIE ARMSTRONG  
 ROBERT ATKINSON  
 PAUL BAZEMORE  
 LILLIAN BOWEN  
 JOHN DARBY  
 BOBBY HAYGOOD  
 DOROTHY HAYGOOD  
 BILLY KELLY  
 CARLEEN LATHAN  
 FAY MINCEY  
 INEZ MCCRIGHT

JAMES MCLENDON  
 ANDREW PRICE  
 BRYAN ROBERTS  
 MAEDEE RUTLAND  
 HARRY SANDIFER  
 SARA SHAW  
 ALVIN SIMS  
 JIMMY STEPHENSON  
 JACK STEVENSON  
 JEROME SYKES  
 ALVIN TAYLOR

MISS LOUISE BUSCH, *Teacher*





DOUGLAS ARNETTE  
 WORTH BALLARD  
 JAMES DRIGGERS  
 EUNICE EDENFIELD  
 MARY ELLEN GAY  
 MARGARET GUNTER  
 WOODWARD HOLLIS, JR.  
 ALTHEA JONES  
 BETTIE MAE JONES  
 MARION KYZER  
 PEARL LIVINGSTON  
 JAMES MATTOX

KATHLEEN McCULLOUGH  
 WILLETTTE MOSLEY  
 ORA LEE NEELY  
 J. C. PULLEN, JR.  
 ERNEST RABB  
 JAMES REYNOLDS  
 BETTIE RUTLAND  
 JOYCE SHARPE  
 HELEN WALLING  
 JOE WILKES  
 LAVERN WILSON  
 ALBERT YOUNG

MISS EMMA HOPE, Teacher

*May you and Joe  
 have loads of luck  
 through the year.*

*I wish you  
 all the luck  
 in the world  
 Joe Wilkes*





MILDRED ATKINSON  
 MARY ELLA BRICE  
 JOAN BROOKS  
 JOHN BUCHANAN  
 WILLIAM CRAWFORD  
 DAVID DOUGLAS  
 LUTHER DUNN  
 JOE HARDEN  
 BETTIE HARDY  
 JAMES LEE  
 MARY RICE McMASTER  
 CHARLES MINCEY

NORA NORMAN  
 ROBERT YOUNG PARK  
 SOPHIE PARK  
 ROBERT PATRICK  
 BILLY POSTON  
 JOHN RABB  
 CODY SPIRES  
 ANN STEVENSON  
 DEMPSEY SIKES  
 REBA TURNER  
 ROSA YOUNG

MISS NINA YOUNG, *Teacher*





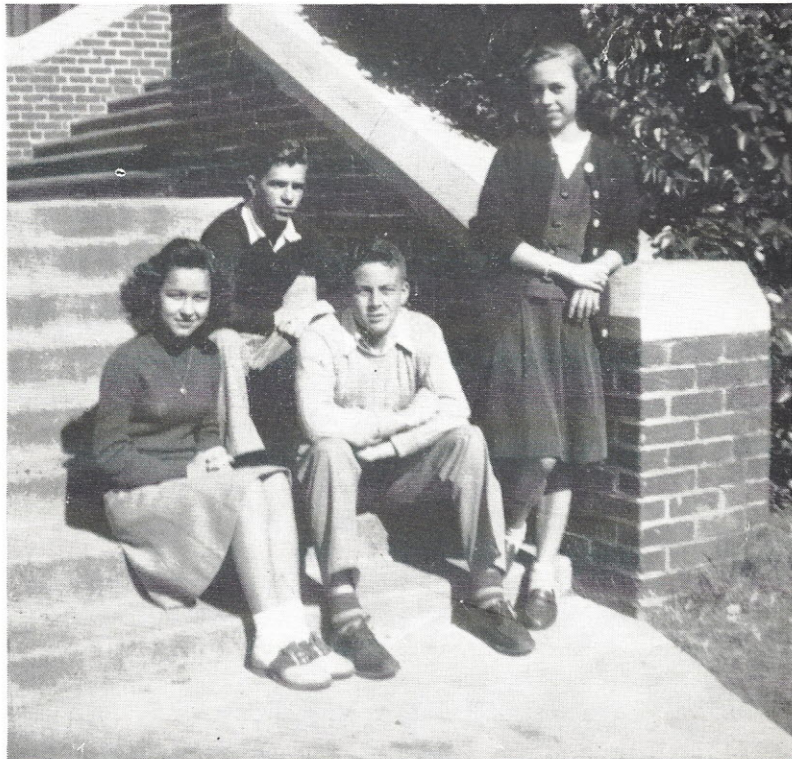
# "Silly Sophomores"

ANETTE COOPER  
*President*

JAMES MCGILL  
*Vice-President*

GENE PATE  
*Secretary*

MARY BABB CANNON  
*Treasurer*







*Best 2 Squad  
"Beck!"*

JOYCE BASS  
 CLIVIE BEASLEY  
 JERRY BENNETT  
 LUCY ANN BOULWARE  
 BETTY BOWEN  
 BETTY SUE BRABHAM  
 GRADY BRANHAM  
 RILEY BRICE  
 JACQUELINE BROWN  
 MARY BABB CANNON  
 CATHERINE CATHCART  
 MELVILLE CATHCART  
 ANNETTE COOPER  
 MERLYN COOPER  
 DORIS CHRISTIE  
 JACQUELINE DEES  
 BERTHA DRIGGERS  
 DU PRE DOMINY  
 JULIA DOMINY

ALBERT EDENFIELD  
 ALICE EDENFIELD  
 PEARL EDENFIELD  
 BETTY JEAN ENLOE  
 LAVERNE GEDDINGS  
 ALLEN GEORGE  
 CHRISTINE GEORGE  
 JOHN GIBSON  
 LUTHER GUNTER  
 DOROTHY HALL  
 DORIS HARDY  
 BETTY HARTIN  
 JACKIE HERNDON  
 BILLY HICKS  
 MARY HOLLIS  
 REVONNE HUNTT  
 CHARLES JENNINGS  
 BENNETT KIRKPATRICK





BETTY LOFTIN  
 HELEN McCANTS  
 NELL McCANTS  
 RUTH McCLINTOCK  
 TOMMY McDONALD, JR.  
 ALLIE McFADDEN  
 JAMES MCGILL  
 DINNY LOU McMASTER  
 HUGH McMASTER  
 WILLIAM MIKELL  
 BONNIE SUE PATE  
 GENE PATE  
 AUDREY PEAKE  
 SIMMY PLYLER, JR.  
 TURNICE ANN POPE  
 ELIZABETH RAMSEY  
 FARRIS RANDALL  
 BOBBY JEAN REYNOLDS  
 MARY RHODUS  
 SARA RHODUS

ALAN SHEDD  
 SUZANNE SHEDD  
 LUTHER SHULER  
 HAZEL SMARR  
 REBECCA STARNES  
 BETTY SURRETT  
 JOAN TATE  
 SONNY TAYLOR  
 HAROLD TIMMS  
 TWEEDIE TIMMS  
 ELIZABETH TRAYLOR  
 LLOYD TURNER  
 ZAN TURNER  
 RUTH VANDERFORD  
 KATHERINE WELLS  
 MYRIA WILSON  
*Teachers:*  
 MISS KATHLEEN LEMMON  
 MISS MABEL MERCHANT  
 MISS EVELYN WARNER



*“Fearful”*  
*“Freshman”*



CATHERINE MCGILL  
*President*

JOE STEPHENSON  
*Vice-President*

GENE MOLNAR  
*Secretary*

HOWARD COLLINS  
*Treasurer*





Colleen Atkins, Barbara Atkinson, Eleanor Baggott, Geneva Branham, Patsy Brown, Betty Cogdill, Patricia Coleman, Barbara Dean, Beverley Drawdy, Sara Frances Fowler, Sara Ann Gladden, Beatrice Hendrix, Lillie Mae Hickerson, Mildred Holsonback, Catherine McGill, Veneria Moseley, Vera Fay Nelson, Dorothy Sharpe, Annie Laura Stevenson, Dorothy Terry, Patsy Waters, Miss Helen Keistler, teacher.



Wilbur Collins, Chesley Enloe, Steve Goudeock, Carl Jeffcoat, Sam Jeffers, Gene Molnar, Dallas Murphy, Jr., Herman Price, James Shaw, Clarence Sims, Joe Stevenson, Odell Tanner, J. D. Tarte, Jr., John Turner, George Wells, Miss Sara Frances Lee, teacher.





Jerry Branham, Malloy Cameron, Roland Davis, Roger Lee Fowler, Evon Gartman, Phebedine Gartman, Billy Glisson, Billy Glover, Billie Jean Groomes, Rhetta Heustess, George Heyward, Mavis Hickerson, Juanita Hudson, Marie Kelly, Ruth Livingston, Jackie Mackey, Ernestine Mincey, Anne Phillips, Bonnell Pylant, Gloria Jean Roddey, Bobbie Jean Rutland, Miss Charlotte Plowden, teacher.



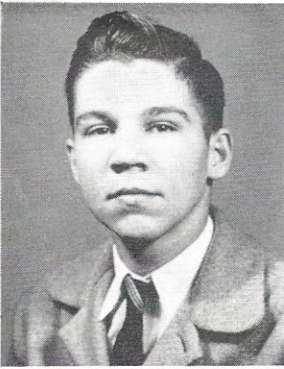
Alva Beckham, Dorothy Branham, Berrie Ann Brice, Frances Broome, John Jesse Bryce, Margaret Anne Cathcart, Howard Collins, Lois Collins, Walter Gay, Virginia Hicks, Junior Holbrook, Elma Jackson, Nancy Miller, Nadine Nelson, Jelexie Norman, Marguerite O'Connell, Marion Smith, Joyce Terry, Vincent Thompson, Dorothy Turner, Faye Watson, Martha Peavy, Mrs. Coleman Stevenson, teacher.





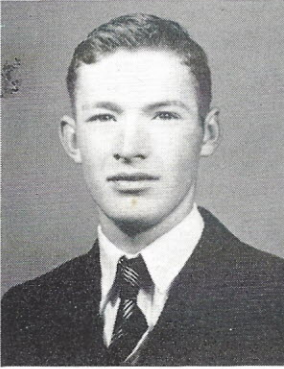
*“Conquer  
and  
Prevail . . .”*



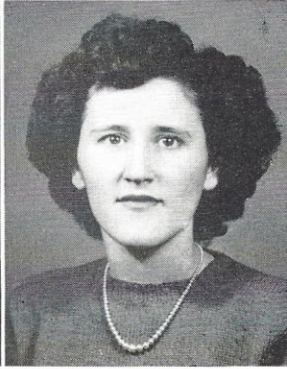


HAZEL PEAKE  
*Editor-in-Chief*

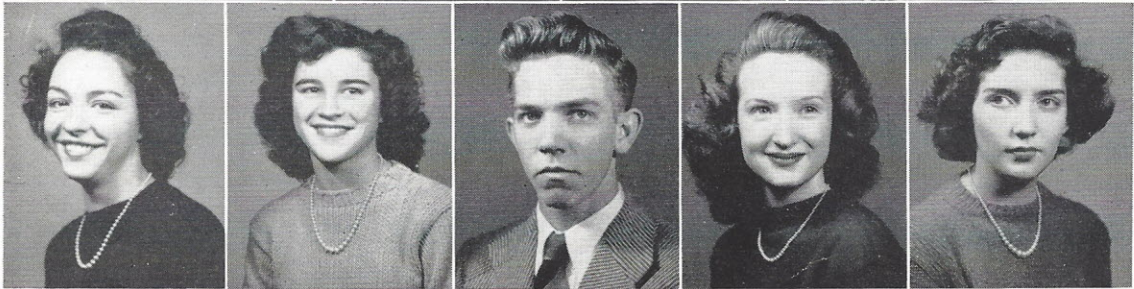
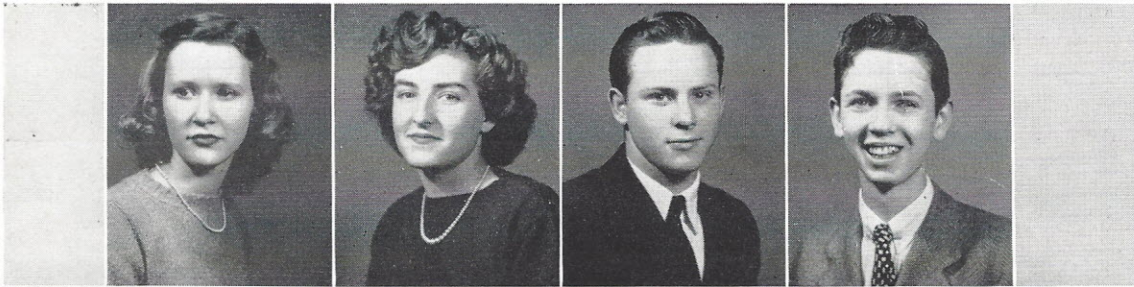
# 1946 TUSITALA STAFF



HAROLD TRAYLOR  
*Assistant Editor-in-Chief*



BEVERLEY SHIRLEY  
*Business Manager*



*Top row: Mary McMaster, Art Editor; Minnie Ruth Lane, Athletic Editor; James Mason, Athletic Editor; Bennett Waitt, Assistant Business Manager. . . . Second row: Betty Porter, Circulation Manager; Millie Jean Cooper, Assistant Circulation Manager; Billy Goudelock, Literary Editor; Ivor Patrick, Assistant Literary Editor; Barbara Wylie, Snapshot Editor. . . . Third row: Miss Charlotte Plowden, Art Adviser; Miss Emma Hope, Business Adviser; Miss Nina Young, General Adviser; Miss Joann Woods, Literary Adviser; Miss Sara Frances Lee, Snapshot Adviser.*



# JUNIOR AND SENIOR ASSISTANTS



James Driggers, Junior Art Assistant; Luther Dunn, Junior Business Assistant; Bettie Hardy, Junior Snapshot Assistant; Mary Jane Ketchin, Senior Art Assistant; Hannah Patrick, Senior Snapshot Assistant; Sara Shaw, Junior Literary Assistant; Jerome Sykes, Junior Circulation Assistant.

# TYPING STAFF



MAMIE LEE ADAMS  
MINNIE RUTH LANE

MILLIE JEAN COOPER  
ISABEL O'CONNELL

LORETTA HUNTT  
BEVERLEY SHIRLEY



# STUDENT COUNCIL



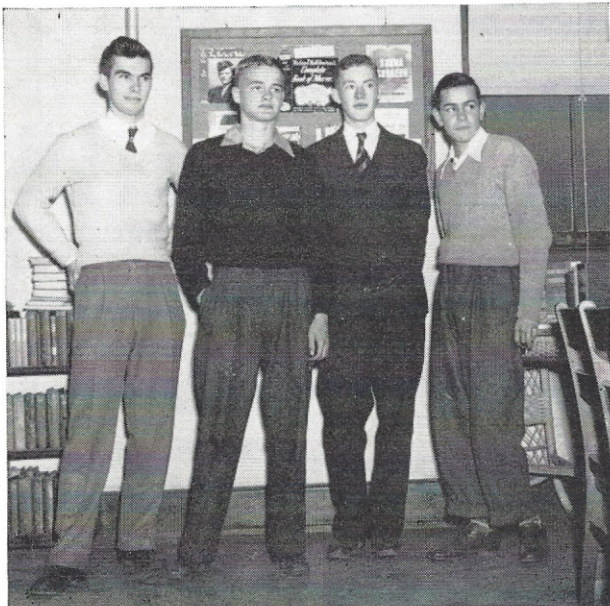
DOUG ARNETTE  
 PAT COLEMAN  
 ALICE EDENFIELD  
 BETTY JEAN ENLOE

EVON GARTMAN  
 BILLY GOUDELICK  
 JACKIE HERNDON  
 JIMMY KINGMAN  
 CATHERINE MCGILL

MARGUERITE O'CONNELL  
 ROBERT PATRICK  
 SARA SHAW  
 JIMMY STEPHENSON

## OFFICERS

JIMMY KINGMAN	. . . . .	<i>President</i>
JIMMY STEPHENSON	. . . . .	<i>Vice-President</i>
HAROLD TRAYLOR	. . . . .	<i>Secretary</i>
DOUG ARNETTE	. . . . .	<i>Treasurer</i>



SPONSORS  
 MISS EMMA HOPE  
 MR. W. R. PRICE  
 MR. W. B. SOUTHERLIN



# BETA CLUB

Organized 1936

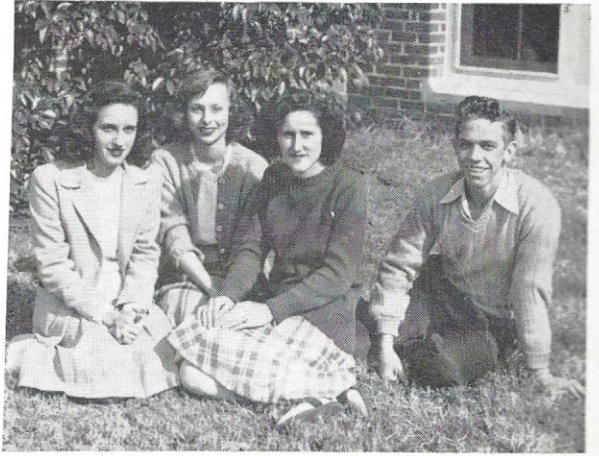
ACHIEVEMENT – CHARACTER – LEADERSHIP

## OFFICERS

NELLE WYLIE . . . . . *President*  
 BEVERLEY SHIRLEY . . . . . *Vice-President*  
 BILLY GOUDELOCK . . . . . *Secretary*  
 MARY JANE KETCHIN . . . . . *Treasurer*

## SPONSORS

MISS DORIS WIGGINS  
 MISS NINA YOUNG



EDDIE ARMSTRONG  
 MILRED ATKINSON  
 ROBERT ATKINSON  
 RUTH COTA  
 JOHN DARBY  
 LUTHER DUNN  
 BILLY GOUDELOCK  
 DOROTHY HAGOOD  
 BETTIE HARDY

MARY JANE KETCHIN  
 CARLEEN LATHAN  
 INEZ MCCREIGHT  
 MARIAN McMASTER  
 MARY McMASTER  
 JEANNETTE NORMAN  
 NORA NORMAN  
 SOPHIE PARK  
 HANNAH PATRICK  
 IVOR PATRICK

ROBERT PATRICK  
 BARBARA RANEY  
 BRYAN ROBERTS  
 MAEDEE RUTLAND  
 SARA SHAW  
 BEVERLEY SHIRLEY  
 JEROME SYKES  
 ALVIN TAYLOR  
 HAROLD TRAYLOR

HELEN WALLING  
 MARY ALICE WILLIAMS  
 NELLE WYLIE  
*Not pictured:*  
 MYREL BOYD  
 TOMMY BRICE  
 LORETTA HUNTT  
 HAZEL PEAKE  
 BARBARA WYLIE



*Best of the  
 Sophi*





## COMMERCIAL CLUB



### OFFICERS

MINNIE RUTH LANE . . . . . *President*  
 LORETTA HUNTT . . . . . *Vice-President*  
 SARA SHAW . . . . . *Secretary*  
 MILLIE JEAN COOPER . . . . . *Treasurer*

### SPONSOR

MISS LOUISE BUSCH

MAMIE LEE ADAMS  
 MILDRED ATKINSON  
 MILLIE JEAN COOPER  
 EUNICE EDENFIELD  
 DOROTHY HAGOOD  
 LORETTA HUNTT  
 ALTHEA JONES  
 MINNIE RUTH LANE

CARLEEN LATHAN  
 ISABEL O'CONNELL  
 BETTY PORTER  
 SARA SHAW  
 BEVERLEY SHIRLEY  
 HELEN WALLING  
 MARY ALICE WILLIAMS  
 ROSA YOUNG





## DISTRIBUTOR'S CLUB



LILLIAN BOWEN  
 MYREL BOYD  
 JAMES DRIGGERS  
 JOAN FLOYD  
 BOBBY HAYGOOD  
 VON EVA HOOVER

BILLY KELLY  
 JAMES MATTOX  
 JAMES MCLENDON  
 JAMES REYNOLDS  
 ALVIN SIMS  
 ALBERT YOUNG

### OFFICERS

BOBBY HAYGOOD . . . . . *President*  
 BILLY KELLY . . . . . *Vice-President*  
 MYREL BOYD . . . . . *Secretary*  
 JAMES DRIGGERS . . . . . *Treasurer*

### SPONSOR

MISS EMMA HOPE



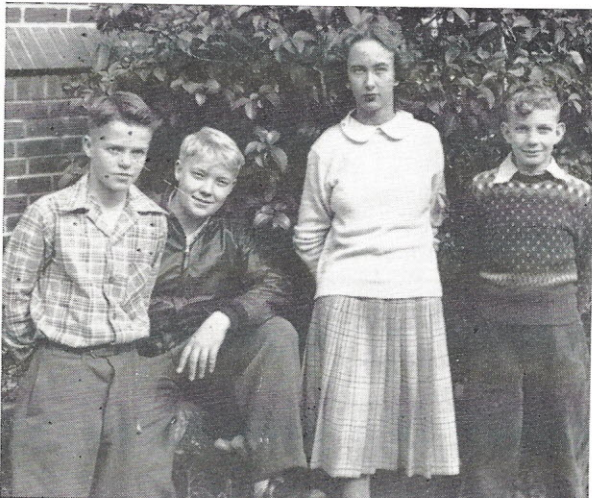
# EIGHTH ENGLISH CLUB



BARBARA ATKINSON  
 ALVA BECKHAM  
 DOROTHY BRANHAM  
 BETTIE ANNE BRICE  
 ANNE CATHCART  
 LOIS COLLINS  
 EVON GARTMAN  
 SARA ANNE GLADDEN  
 STEVE GOUDELOCK

RETTA HEUSTESS  
 GEORGE HEYWARD  
 ELMA JACKSON  
 MARIE KELLY  
 RUTH LIVINGSTON  
 JACQUELINE MACKEY  
 NANCY MILLER  
 NADINE NELSON  
 JELELY NORMAN

MARGUERITE O'CONNELL  
 ANNE PHILLIPS  
 GLORIA JEAN RODDEY  
 MARION SMITH  
 JOE STEPHENSON  
 VINCENT THOMPSON  
 DOROTHY TURNER  
 JOHN TURNER  
 FAYE WATSON



## OFFICERS

JOE STEPHENSON	President
STEVE GOUDELOCK	Vice-President
ANNE PHILLIPS	Secretary
JOHN TURNER	Treasurer

## SPONSOR

MISS SARA FRANCES LEE



# FRENCH CLUB



EDDIE ARMSTRONG  
 ROBERT ATKINSON  
 JOAN BROOKS  
 JOHN BUCHANAN  
 RUTH COTA  
 JOHN DARBY  
 LUTHER DUNN  
 BILLY GOUDELOCK  
 JOE HARDEN

BETTIE HARDY  
 MARY JANE KETAHIN  
 MARIAN McMASTER  
 MARY McMASTER  
 INEZ McCREIGHT  
 JEANETTE NORMAN  
 NORA NORMAN  
 HANNAH PATRICK  
 IVOR PATRICK

ROBERT PATRICK  
 JOHN RABB  
 BRYAN ROBERTS  
 ANN STEVESON  
 JIMMY STEPHENSON  
 HAROLD TRAYLOR  
 HELEN WALLING  
 NELLE WYLIE  
 ROSA YOUNG



## OFFICERS

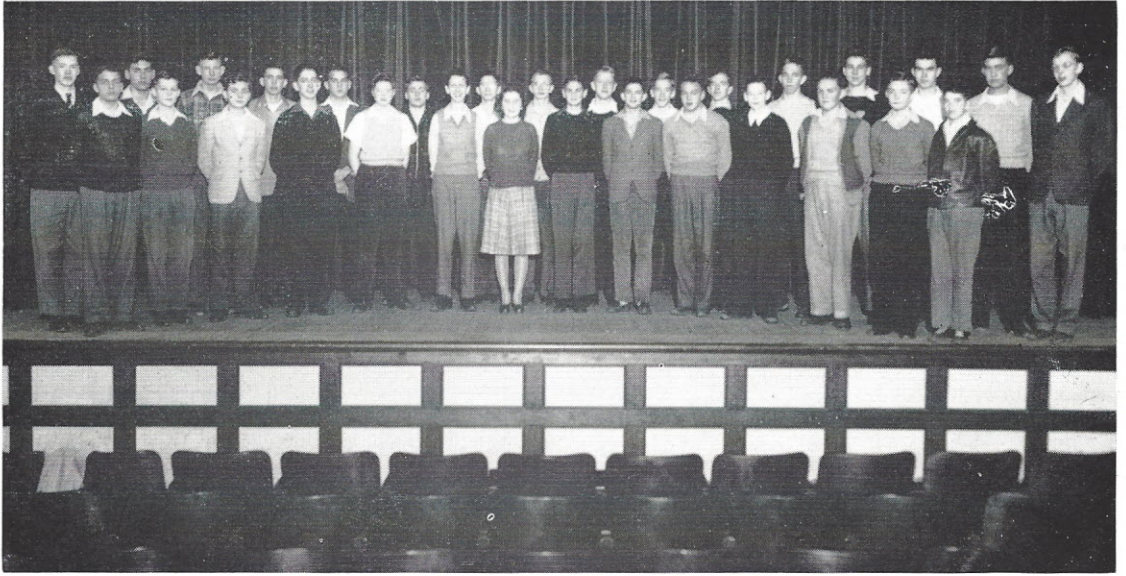
BILLY GOUDELOCK . . . . . *President*  
 ROBERT ATKINSON . . . . . *Vice-President*  
 JIMMY STEPHENSON . . . . . *Secretary*  
 JOHN DARBY . . . . . *Treasurer*

## SPONSOR

MISS SARA FRANCES LEE



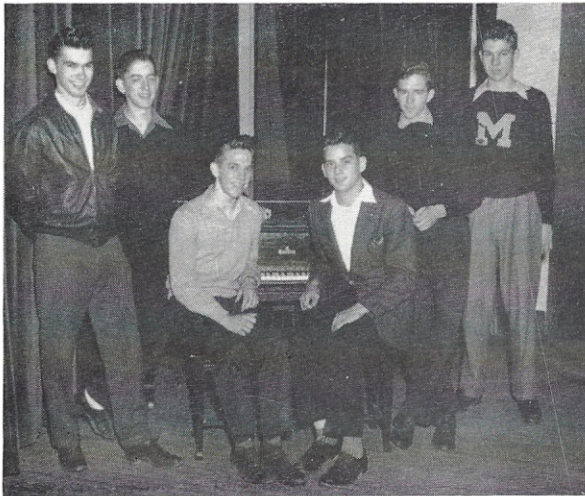
# BOYS' GLEE CLUB



EDDIE ARMSTRONG  
 PAUL BAZEMORE  
 JERRY BENNETT  
 NEIL BRABHAM  
 CARL DOUGLAS  
 ALLEN GEORGE  
 BILLY GOUDELICK  
 BILLY HICKS  
 REVONNE HUNTT

CHARLES JENNINGS  
 BILLY KELLY  
 JIMMY KINGMAN  
 EDWIN LADD  
 TOM McDONALD  
 JAMES MCGILL  
 WILLIAM MIKELL  
 GENE PATE

ROBERT PATRICK  
 HAZEL PEAKE  
 SIMMY PLYLER  
 BILLY POSTON  
 BRYAN ROBERTS  
 ALAN SHEDD  
 ZAN TURNER  
 BERNETT WAITT  
 JOE WILKES



## DIRECTOR

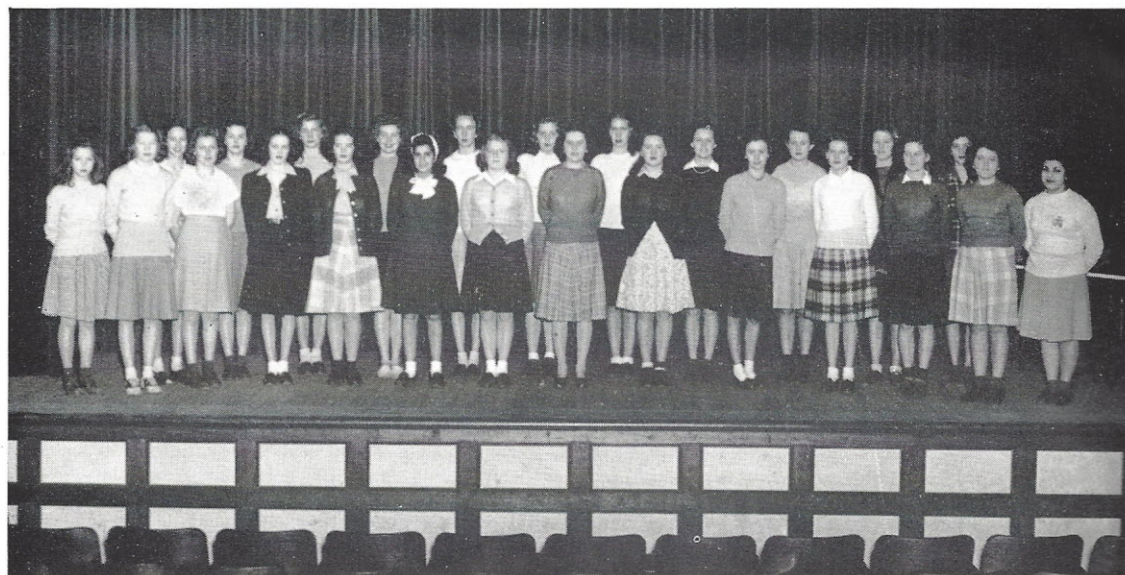
MISS MARY ANNELLE STUCKEY

## OFFICERS

HARRY SANDIFER . . . . . *President*  
 BILLY GOUDELICK . . . . . *Vice-President*  
 JAMES MCGILL . . . . . *Secretary*  
 EDDIE ARMSTRONG . . . . . *Treasurer*  
 HAZEL PEAKE . . . . . *Librarian*  
 JIMMY KINGMAN . . . . . *Assistant Librarian*



# JUNIOR GIRLS' GLEE CLUB



BARBARA ATKINSON  
 JACQUELINE BROWN  
 ANNE CATHCART  
 PAT COLEMAN  
 MERLYN COOPER  
 LAVERNE GEDDINGS  
 DORIS HARDY

RETTA HEUSTESS  
 MARY HOLLIS  
 MARIE KELLY  
 HELEN MCCANTS  
 NELL MCCANTS  
 NANCY MILLER  
 JELELY NORMAN

ANNE PHILLIPS  
 GLORIA JEAN RODDEY  
 SUSANNE SHEDD  
 HAZEL SMARR  
 DOROTHY TURNER  
 KATHERINE WILKES  
 MYRIA WILSON



## DIRECTOR

MISS MARY ANNELLE STUCKEY

## OFFICERS

NELL MCCANTS . . . . . *President*  
 ALVA BECKHAM . . . . . *Vice-President*  
 LAVERNE GEDDINGS . . . . . *Secretary*  
 DINNY LU MCMASTER . . . . . *Treasurer*  
 MERLYN COOPER . . . . . *Librarian*





## SENIOR GIRLS' GLEE CLUB

MAMIE LEE ADAMS  
 MILDRED ATKINSON  
 MARY ELLA BRICE  
 SARAH BRICE  
 JOAN BROOKS  
 ILA MAE CLAMP  
 MILLIE JEAN COOPER  
 RUTH COTA  
 EUNICE EDENFIELD  
 WILLIE B. GOODWIN  
 BETTIE HARDY  
 LORETTA HUNTT

ALTHEA JONES  
 BETTY MAE JONES  
 MARY JANE KETCHIN  
 MINNIE RUTH LANE  
 INEZ MCCRIGHT  
 KATHLEEN MCCULLOUGH  
 MARIAN McMASTER  
 MARY RICE McMASTER  
 FAY MINCEY  
 JEANNETTE NORMAN  
 ISABEL O'CONNELL  
 SOPHIE PARK  
 HANNAH PATRICK

IVOR PATRICK  
 BETTY PORTER  
 BETTY POSTON  
 BETTY RUTLAND  
 MAEDEE RUTLAND  
 SARA SHAW  
 BEVERLEY SHIRLEY  
 ANNE STEVENSON  
 NAOMI STEVENSON  
 BARBARA WYLIE  
 NELLE WYLIE  
 ROSA YOUNG



### DIRECTOR

MISS MARY ANNELLE STUCKEY

### OFFICERS

BETTY PORTER . . . . . *President*  
 MINNIE RUTH LANE . . . . . *Vice-President*  
 SARA SHAW . . . . . *Secretary*  
 MILLIE JEAN COOPER . . . . . *Treasurer*  
 BEVERLEY SHIRLEY . . . . . *Librarian*





# JUNIOR HOMEMAKERS' ASSOCIATION

CLIVIE BEASLEY  
 LUCY ANN BOULWARE  
 BETTY SUE BRABHAM  
 CATHERINE CATHCART  
 JACQUELINE DEES  
 ALICE EDENFIELD

LAVERNE GEDDINGS  
 CHRISTINE GEORGE  
 DORIS HARDY  
 MARY HOLLIS  
 BETTY LCFTIN  
 HELEN MCCANTS  
 NELL MCCANTS

RUTH McCLINTOCK  
 DINNY LOU McMASTER  
 FARRIS RANDALL  
 TWEEDIE TIMMS  
 SUSANNE SHEDD  
 HAZEL SMARR

*May you always be  
 happy & successful  
 always a friend!*

## OFFICERS

LAVERNE GEDDINGS . . . . . *President*  
 NELL MCCANTS . . . . . *Vice-President*  
 DORIS HARDY . . . . . *Secretary-Treasurer*  
 HAZEL SMARR . . . . . *Pianist*

## SPONSOR

MISS HELEN KEISTLER







## OFFICERS

IVOR PATRICK . . . . . *President*  
 DOUG ARNETTE . . . . . *Vice-President*  
 HANNAH PATRICK . . . . . *Secretary*  
 INEZ MCCREIGHT . . . . . *Treasurer*

## SPONSOR

MISS NINA YOUNG

# LATIN CLUB



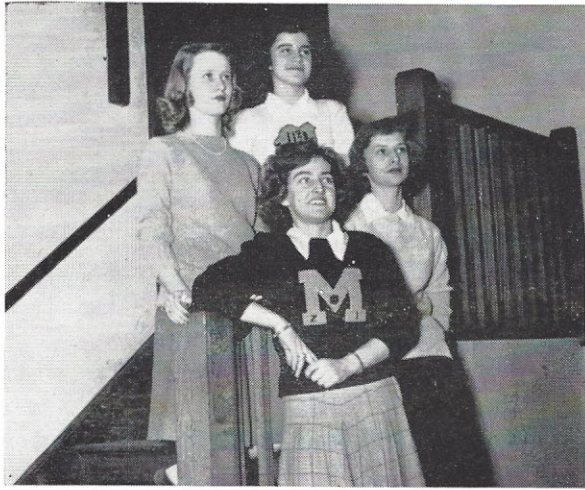
EDDIE ARMSTRONG  
 DOUG ARNETTE  
 MILDRED ATKINSON  
 WORTH BALLARD  
 JOYCE BASS  
 JERRY BENNETT  
 LUCY ANN BOULWARE  
 NEIL BRABHAM  
 MARY ELLA BRICE  
 MARY BABB CANNON  
 DORIS CHRISTIE  
 ANNETTE COOPER  
 MERLYN COOPER  
 RUTH COTA  
 JOHNNY DARBY  
 JAQUELINE DEES

DAVID DOUGLAS  
 CARL DOUGLAS  
 LUTHER DUNN  
 ALICE EDENFIELD  
 PEARL EDENFIELD  
 BETTY JEAN ENLOE  
 MARY ELLEN GAY  
 CHRISTINE GEORGE  
 BILLY GOUDELICK  
 DOROTHY HALL  
 JOE HARDEN  
 JACKIE HERNDON  
 REVONNE HUNTT  
 CHARLES JENNINGS  
 MARY JANE KETCHIN  
 JIMMY KINGMAN  
 EDWIN LADD

JAMES MATTOX  
 HELEN MCCANTS  
 NELL MCCANTS  
 INEZ MCCRIGHT  
 CARLISLE McDONALD  
 TOM McDONALD  
 DINNY LOU McMASTER  
 MARIAN McMASTER  
 MARY McMASTER  
 JEANETTE NORMAN  
 NORA NORMAN  
 BOBBIE PARK  
 SOPHIE PARK  
 BONNIE SUE PATE  
 GENE PATE  
 HANNAH PATRICK  
 IVOR PATRICK

AUDREY PEAKE  
 SIMMY PLYLER  
 TURNICE ANN POPE  
 ROGERS RABB  
 ELIZABETH RAMSEY  
 MARY RHODUS  
 BRYAN ROBERTS  
 SUSANNE SHEDD  
 HAZEL SMARR  
 JOAN TATE  
 ELIZABETH TRAYLOR  
 ZAN TURNER  
 RUTH VANDERFORD  
 BERNETT WAITT  
 BARBARA WYLIE  
 NELLE WYLIE





### OFFICERS

MARY JANE KETCHIN . . . . . *President*  
 MILLIE JEAN COOPER . . . . . *Vice-President*  
 MINNIE RUTH LANE . . . . . *Secretary*  
 MARY McMASTER . . . . . *Treasurer*

### SPONSORS

MISS CHARLOTTE FLOWDEN  
 MISS JOANN WOODS

## SENIOR LITERARY CLUB



MAMIE LEE ADAMS  
 NEIL BRABHAM  
 SARAH BRICE  
 TOMMY BRICE  
 ILA MAE CLAMP  
 MILLIE JEAN COOPER  
 RUTH COTA  
 CARL DOUGLAS  
 JOAN FLOYD  
 WILLIE B. GOODWIN  
 LORETTA HUNT  
 MARY JANE KETCHIN

ERSKINE KYZER  
 EDWIN LADD  
 MINNIE RUTH LANE  
 MARIAN McMASTER  
 MARY McMASTER  
 JEANETTE NORMAN  
 ISABEL O'CONNELL  
 HANNAH PATRICK  
 IVOR PATRICK  
 HAZEL PEAKE  
 BETTY POSTON

BETTY PORTER  
 ROGERS RABB  
 BARBARA RANEY  
 BEVERLEY SHIRLEY  
 MARGARET SMITH  
 NAOMI STEVENSON  
 HAROLD TRAYLOR  
 BERNETT WAITT  
 MARY ALICE WILLIAMS  
 CHRIS WILSON  
 BARBARA WYLIE  
 NELLE WYLIE



# MATHEMATICS CLUB



EDDIE ARMSTRONG  
 ROBERT ATKINSON  
 JOYCE BASS  
 BETTY SUE BRABHAM  
 RILEY BRICE  
 TOMMY BRICE  
 JOAN BROOKS  
 MARY BABB CANNON  
 DORIS CHRISTIE  
 MERLYN COOPER  
 JOHN DARBY  
 JACK DEES

LUTHER DUNN  
 ALICE EDENFIELD  
 BETTY JEAN ENLOE  
 LAVERNE GEDDINGS  
 CHRISTINE GEORGE  
 LUTHER GUNTER  
 DOROTHY HALL  
 BETTIE HARDY  
 JACKIE HERNDON  
 REVONNE HUNTT  
 CHARLES JENNINGS  
 BENNETT KIRKPATRICK

HELEN MCCANTS  
 NELL MCCANTS  
 ALLIE MCFADDEN  
 NORA NORMAN  
 SOPHIE PARK  
 GENE PATE  
 ROBERT PATRICK  
 AUDREY PEAKE  
 HAZEL PEAKE  
 SIMMY PLYLER  
 ELIZABETH RAMSEY  
 FERRIS RANDALL

BRYAN ROBERTS  
 SUSANNE SHEDD  
 HAZEL SMARR  
 ANN STEVENSON  
 TWEEDIE TIMMS  
 RUTH VANDERFORD  
 KITTY WELLS  
 LAVERNE WILSON  
*Not pictured:*  
 LORETTA HUNTT  
 BILLY POSTON  
 BERNETT WAITT



*Best of luck  
 to you always  
 Love,  
 "Net"*

## OFFICERS

LUTHER DUNN . . . . . *President*  
 EDDIE ARMSTRONG . . . . . *Vice-President*  
 ANNETTE COOPER . . . . . *Secretary*  
 ROBERT ATKINSON . . . . . *Treasurer*

## SPONSORS

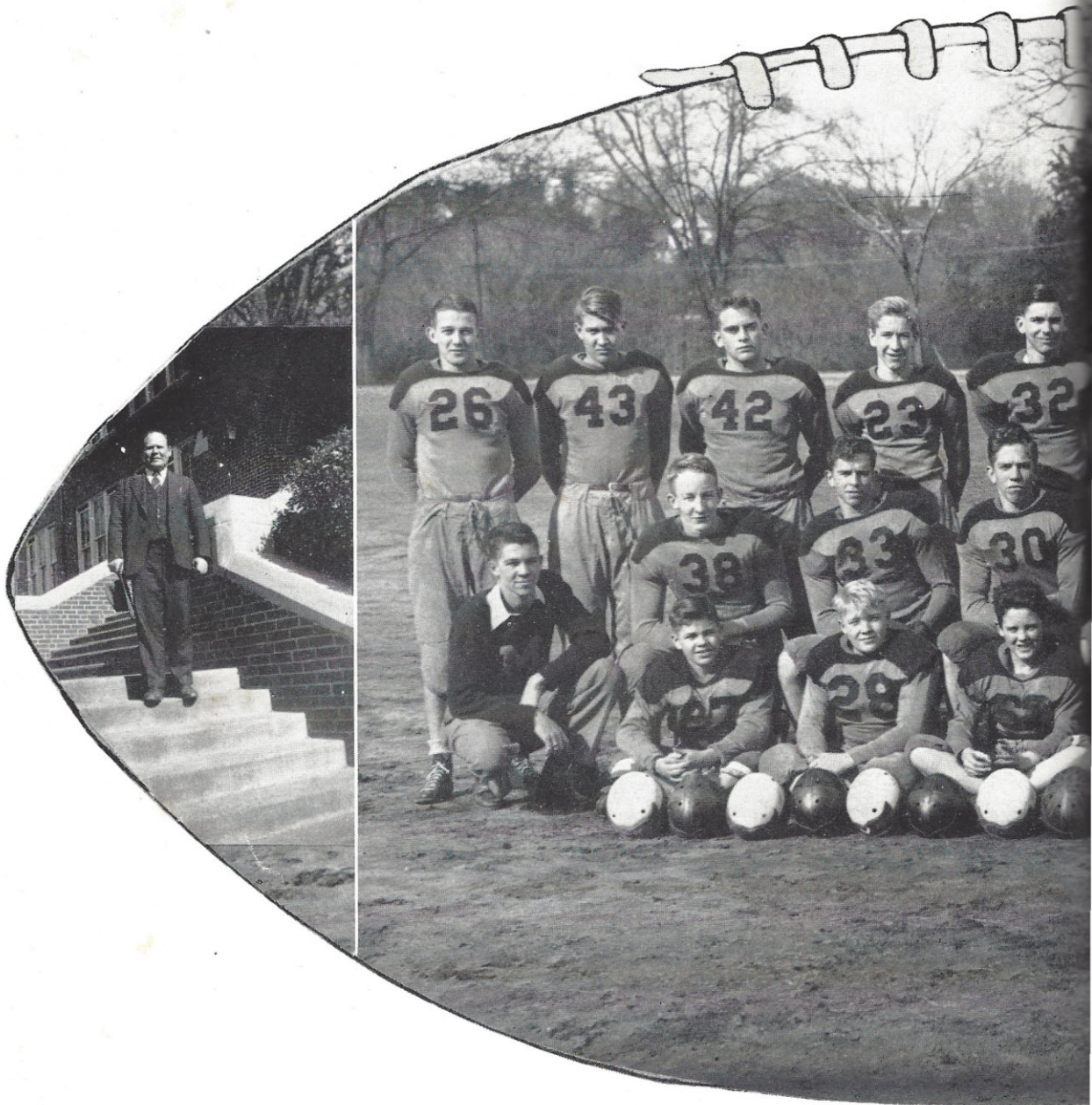
MISS KATHLEEN LEMMON  
 MISS EVELYN WARNER





# *Athletics*

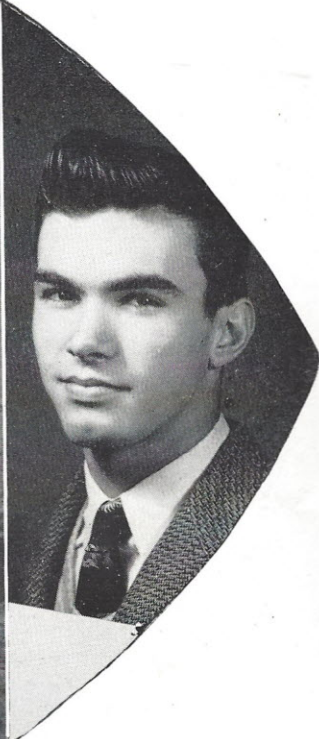




## MZI WILDCATS

Robert Atkinson . . . . .	Fullback	Hugh McMaster . . . . .	Tackle
Neil Brabham . . . . .	Tackle	Kenneth Martin . . . . .	End
John Buchanan . . . . .	Guard	James Mason . . . . .	End
Howard Collins . . . . .	End	Gene Molnar . . . . .	End
Heyward Cooper . . . . .	Left Halfback	Gene Pate . . . . .	Right Halfback
John Darby . . . . .	Quarterback	Robert Patrick . . . . .	Left Halfback
Luther Dunn . . . . .	Center	Hazel Peake . . . . .	End
Allen George . . . . .	Right Halfback	Harry Gene Sandifer . . . . .	Tackle
Billy Goudelock . . . . .	Tackle	Alan Shedd . . . . .	Tackle
Steve Goudelock . . . . .	Guard	Jimmy Stephenson . . . . .	Guard
Bobby Haygood . . . . .	Guard	Jack Stevenson . . . . .	Left Halfback
Revonne Huntt . . . . .	Center	Jerome Sykes . . . . .	End
Billy Hicks . . . . .	Tackle	Vincent Thompson . . . . .	End
Jimmy Kingman (Captain) . . . . .	Quarterback	W. R. Price . . . . .	Coach
James McGill . . . . .	Guard	Eddie Armstrong . . . . .	Manager

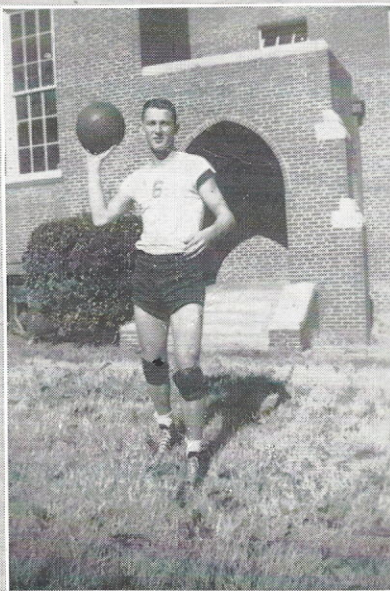
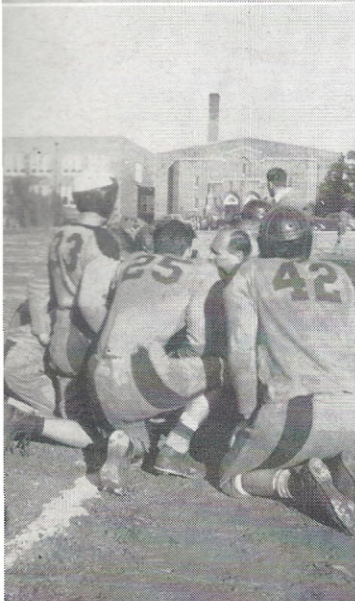
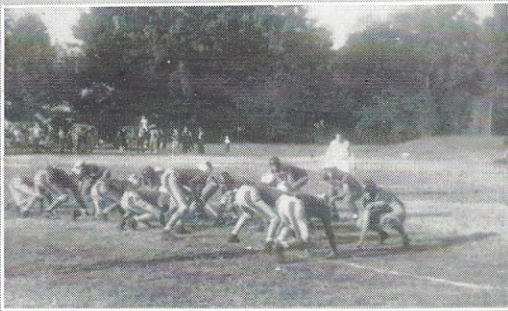
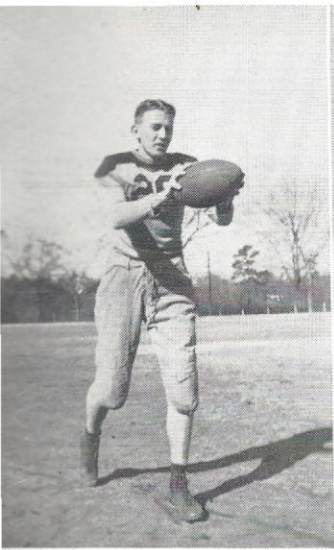




## SCHEDULE

Clover . . . . .	14	Mount Zion . . . . .	0
Newberry . . . . .	7	Mount Zion . . . . .	26
Great Falls . . . . .	19	Mount Zion . . . . .	14
Winthrop Training School . . . . .	7	Mount Zion . . . . .	21
Bamberg . . . . .	6	Mount Zion . . . . .	19
Kershaw . . . . .	0	Mount Zion . . . . .	21
York . . . . .	0	Mount Zion . . . . .	7
Union . . . . .	13	Mount Zion . . . . .	0







# BOYS' BASKETBALL TEAM

Eddie Armstrong, Guard; Robert Atkinson, Guard; Luther Dunn, Guard; Allen George, Forward; Revonne Hunt, Forward; Edwin Ladd, Forward; James McGill, Guard; Gene Molnar, Forward; Robert Patrick, Center; Hazel Peake, Forward; Cody Spires, Forward; Jack Stevenson, Captain, Center; Jerome Sykes, Guard; George Wells, Forward; W. R. Price, Coach.



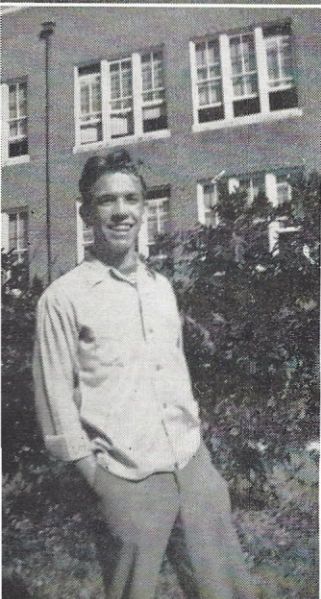
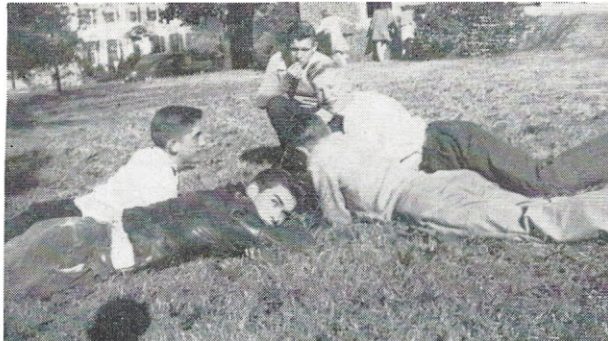
# GIRLS' BASKETBALL TEAM

*Lots of luck and happiness to you and Joe because you really deserve it.*  
*Jaye*



Jacqueline Brown, Forward; Merlyn Cooper, Forward; La Verne Geddings, Forward; Minnie Ruth Lane, Guard; Faye Mincey, Forward; Vera Faye Nelson, Guard; Jeanette Norman, Guard; Betty Porter, Forward; Maedee Rutland, Forward; Sara Shaw, Guard; Beverley Shirley, Captain, Guard; Naomi Stevenson, Guard; Katherine Wells, Forward; Miss Emma Hope, Coach.





## THROUGH THE

October 5—Football Season Open—Clover here

October 12—Football—Newberry here

October 19—Football—Great Falls here

October 24—Carolina Assembly Program

October 29—Reports

November 1—Football—Winthrop Training at Rock Hill

November 9—Football—Bamberg at Bamberg

November 15—Commercial Club Program

November 16—Football—Kershaw at Kershaw

November 21—Football—Union at Union

November 22-23—Thanksgiving Holidays

November 26-28—Six weeks tests

November 30—Football—York here

December 6—Reports

December 13—Christmas Program at High School

December 18-31—Christmas Holidays

January 4—Basketball—University High at Columbia

January 8—Basketball—Fort Mill at Fort Mill

January 11—Basketball—Jenkinsville here

January 15—Annual pictures made. Basketball—Blythewood here.  
Carolina Assembly Program

January 18—Basketball—Swansea here

January 21-23—Examinations







# YEAR

- January 25—Basketball—Swansea at Swansea
- January 29—Basketball—Great Falls at Great Falls
- January 31—Reports
- February 1—Basketball—Jenkinsville at Jenkinsville
- February 8—Basketball—Great Falls here
- February 12-16—District Basketball Tournament at Lancaster
- February 19—Basketball—Fort Mill here
- February 26—Forestry Quiz
- March 4-6—Six weeks tests
- March 22—Junior play
- March 29—State Teachers Meeting
- April 12—District Debates
- April 15-17—Six weeks tests
- April 19—Easter
- April 20—Reports
- April 25-27—Music Festival at Rock Hill
- May 3—Junior-Senior
- May 20-22—Senior Examinations
- May 28-30—Regular Examinations
- June 2—Commencement Sermon
- June 3—Class Night
- June 4—Graduation





# SENIOR DIRECTORY

ADAMS, MAMIE LEE . . . French Club, 3; Cadette Corps, 2, 3, 4; Commercial Club, 4; Typing Staff, TUSITALA, 4; Glee Club, 2, 3; Literary Club, 4.

BOYD, MYREL . . . Distributor's Club, 4, Secretary, 4; Cadette Corps, 2, 3, 4; Literary Club, 4.

BRABHAM, NEIL . . . Latin Club, 1, 2, 3, 4; Cadet Corps, 1, 2, 3, 4; French Club, 3; Glee Club, 2, 3, 4; Football, 4; Literary Club, 4.

BRICE, SARAH . . . Literary Club, 4; Junior Homemakers' Association, 1; Glee Club, 3, 4; Basketball, 3; Cadette Corps, 2, 3, 4.

BRICE, TOMMY . . . Mathematics Club, 4; French Club, 3, 4; Literary Club, 4; Cadet Corps, 1, 2, 3, 4.

BROOKS, TRAYWICK . . . Veteran of World War II.

CLAMP, ILA MAE . . . Transfer from Greenbrier, 4; Basketball, 4; Glee Club, 4; Cadette Corps, 4; Literary Club, 4.

COOPER, MILLIE JEAN . . . Assistant Circulation Manager, TUSITALA, 4; Typing Staff, TUSITALA, 4; Cadette Corps, 2, 3, 4; French Club, 3, Treasurer, 3; Class Play, 3; Glee Club, 4, Treasurer, 4; Commercial Club, 4, Treasurer, 4; Cheerleader, 4; Class Secretary-Treasurer, 1; Class Secretary, 2; Beta Club, 3; Literary Club, 4, Vice-President, 4; Best All-Round, 4.

COTA, RUTH . . . Beta Club, 3, 4; Latin Club, 1, 2, 3, 4; French Club, 3, 4; Junior Homemakers' Association, 1, 2; Glee Club, 1, 2, 3, 4; Cadette Corps, 2, 3, 4; Literary Club, 4; Junior Play, 3; Basketball, 3.

DOUGLAS, CARL . . . Latin Club, 1, 2, 3, 4; French Club, 3; Literary Club, 4; Glee Club, 3, 4; Cadet Corps, 1, 2, 3, 4.

FLOYD, JOAN . . . Junior Homemakers' Association, 1; Cadette Corps, 2, 3, 4; French Club, 3; Distributor's Club, 4; Literary Club, 4.

GOODWIN, WILLIE B. . . French Club, 3; Commercial Club, 4; Glee Club, 1, 2, 3, 4; Literary Club, 4; Cadette Corps, 2, 3, 4.

GOUDELOCK, BILL . . . Latin Club, 1, 2, 3, 4; Beta Club, 3, 4, Secretary, 4; French Club, 3, 4, Vice-President, 3, President, 4; Class Play, 3; Class Secretary, 3; Class President, 4; Student Council, 4; Literary Editor, TUSITALA, 4; Literary Club, 4; Most Intellectual, 4; Glee Club, 1, 2, 3, 4, Vice-President, 4; Football, 3, 4; Cadet Corps, 1, 2, 3, 4.

HALL, CHARLENE . . . French Club, 3; Literary Club, 4; Glee Club, 4; Cadette Corps, 2, 3, 4.

HOOVER, VON EVA . . . Distributor's Club, 4; Literary Club, 4; Glee Club, 1, 2, 3; Cadette Corps, 2, 3, 4.

HUNTT, LORETTA . . . Beta Club, 4; Mathematics Club, 4; Cadette Corps, 2, 3, 4; Class Treasurer, 2; French Club, 3; Commercial Club, 4, Vice-President, 4; Glee Club, 4; Typing Staff, TUSITALA, 4; Literary Club, 4.

KETCHIN, MARY JANE . . . Beta Club, 3, 4, Treasurer, 4; French Club, 3, 4; Latin Club, 1, 2, 3, 4, Vice-President, 3; Glee Club, 1, 2, 3, 4, President, 2; Junior Homemakers' Association, 1, 2, President, 2; Cheerleader, 3, 4; Cadette Corps, 2, 3, 4; Class Play, 3; Assistant Art Editor, TUSITALA, 4; Literary Club, 4, President, 4.

KINGMAN, JIMMY . . . Latin Club, 1, 3, 4; French Club, 3, Secretary, 3; Cadet Corps, 1, 2, 3, 4, Lieutenant, 3, 4; Class Play, 3; Football, 1, 2, 3, 4, Captain, 4; Class President, 3; Class Vice-President, 4; Student Council, 4, President, 4; Best All-Round, 4; Glee Club, 2, 3, 4, Librarian, 3, Assistant Librarian, 4; Double Quartet, 3.

KYZER, ERSKINE . . . Cadet Corps, 1, 2, 3, 4.

LADD, EDWIN . . . Latin Club, 4; French Club, 3; Cadet Corps, 1, 2, 3, 4; Glee Club, 3, 4; Literary Club, 4; Basketball, 3, 4.

LANE, MINNIE RUTH . . . French Club, 3; Glee Club, 2, 3, 4, Vice-President, 4, Treasurer, 3; Most Athletic, 4; Basketball, 3, 4; Cadette Corps, 2, 3, 4; Commercial Club, 4, President, 4; Literary Club, 4, Secretary, 4; Typing Staff, TUSITALA, 4, Sports Editor, 4; Beta Club, 3.

McDONALD, CARLISLE . . . Latin Club, 1, 3, 4; French Club, 3; Glee Club, 1, 2, 3; Junior Homemakers' Association, 1, 2; Cadette Corps, 2, 3, 4; Literary Club, 4.

McMASTER, MARIAN . . . Latin Club, 1, 2, 3, 4; Junior Homemakers' Association, 1, 2; French Club, 3, 4; Glee Club, 2, 3, 4; Beta Club, 3, 4; Cadette Corps, 2, 3, 4; Class Play, 3; Literary Club, 4.



# SENIOR DIRECTORY

McMASTER, MARY . . . Junior Homemakers' Association, 1, 2, Vice-President, 2; Latin Club, 1, 2, 3, 4, Secretary, 3; French Club, 3, 4; Beta Club, 3, 4; Cadette Corps, 2, 3, 4; Art Editor, TUSITALA, 4; Literary Club, 4, Treasurer, 4; South Carolina Literary Yearbook, 3; Best Citizen, 4.

MASON, JAMES . . . Cadet Corps, 1, 2, 3, 4, Lieutenant, 4; Football, 2, 3, 4; Athletic Editor, TUSITALA, 4; Basketball, 4; Most Athletic, 4.

NORMAN, JEANNETTE . . . Latin Club, 1, 2, 3, 4; French Club, 3, 4; Beta Club, 3, 4; Class Treasurer, 3; Glee Club, 3, 4; Junior Homemakers' Association, 1; Literary Club, 4; Basketball, 2, 3, 4; Cadette Corps, 2, 3, 4.

O'CONNELL, ISABEL . . . Commercial Club, 4; French Club, 3; Glee Club, 1, 4; Typing Staff, TUSITALA, 4; Junior Homemakers' Association, 1; Literary Club, 4; Cadette Corps, 2, 3, 4.

PATRICK, HANNAH . . . Beta Club, 3, 4; Latin Club, 1, 2, 3, 4, Secretary, 4; French Club, 3, 4; Glee Club, 1, 2, 3, 4, Secretary-Treasurer, 3; South Carolina Literary Yearbook, 3; Assistant Snapshot Editor, TUSITALA, 4; Literary Club, 4; Most Versatile, 4.

PATRICK, IVOR . . . Beta Club, 3, 4; Latin Club, 1, 2, 3, 4, President, 4; French Club, 3, 4; Glee Club, 1, 2, 3, 4, Librarian 2; Cadette Corps, 2, 3, 4; South Carolina Yearbook, 3; Assistant Literary Editor, TUSITALA, 4; Literary Club, 4; Most Intellectual, 4.

PEAKE, HAZEL . . . Editor-in-Chief, TUSITALA, 4; Beta Club, 4; Literary Club, 4; Most Popular, 4; Glee Club, 2, 3, 4, Librarian, 4; Cadet Corps, 1, 2, 3, 4, Lieutenant, 4; Basketball, 2, 3, 4; Football, 2, 4; Class Play, 3; Mathematics Club, 4; Class Secretary, 4.

PORTER, BETTY . . . Student Council, 3, Secretary, 3; Cheerleader, 3, 4; Glee Club, 4, President, 4; Commercial Club, 4; Circulation Manager, TUSITALA, 4; Basketball, 4; Literary Club, 4; Cadette Corps, 2, 3, 4; Platoon Sergeant, 4.

PORTER, BILLY . . . Veteran of World War II.

POSTON, BETTY . . . French Club, 3; Glee Club, 4; Junior Homemakers' Association, 1; Literary Club, 4; Cadette Corps, 2, 3, 4.

RABB, ROGERS . . . Latin Club, 1, 3, 4; French Club, 3; Class Play, 3; Football, 3; Literary Club, 4; Glee Club, 2, 3, 4; Cadet Corps, 1, 2, 3, 4.

RANEY, BARBARA . . . French Club, 3; Beta Club, 3, 4; Literary Club, 4; Cadette Corps, 2, 3, 4.

SHIRLEY, BEVERLEY . . . Glee Club, 2, 3, 4, Secretary, 3, Librarian, 4; French Club, 3; Literary Club, 4; Beta Club, 3, 4, Vice-President, 4; Business Manager, TUSITALA, 4, Typing Staff, 4; Cadette Corps, 2, 3, 4; Class President, 2; Commerce Club, 4; Basketball, 2, 3, 4, Co-Captain, 3, Captain, 4; Most Dependable, 4.

SMITH, MARGARET . . . Cadette Corps, 2, 3, 4; Literary Club, 4.

STEVENSON, NAOMI . . . Glee Club, 2, 3, 4; French Club, 3; Basketball, 3, 4; Cadette Corps, 2, 3, 4; Literary Club, 4.

TRAYLOR, HAROLD . . . French Club, 3, 4; Beta Club, 4; Glee Club, 4; Class Treasurer, 4; Student Council, 4, Secretary, 4; Assistant Editor, TUSITALA, 4; Literary Club, 4; Most Dependable, 4; Cadet Corps, 1, 2, 3, 4.

WAITT, BERNETT . . . Latin Club, 1, 3, 4; Cadet Corps, 1, 2, 3, 4; Glee Club, 2, 3, 4; Assistant Business Manager, TUSITALA, 4; Commercial Club, 4; Mathematics Club, 4; Literary Club, 4; Most Versatile, 4.

WILLIAMS, MARY ALICE . . . Beta Club, 3, 4; Cadette Corps, 2, 3, 4; Commercial Club, 4; Literary Club, 4.

WILSON, CHRIS . . . Veteran of World War II.

WYLIE, BARBARA . . . Latin Club, 1, 2, 3, 4; Junior Homemakers' Association, 1, 2; French Club, 4; Cadette Corps, 2, 3, 4; Glee Club, 2, 3, 4; Snapshot Editor, TUSITALA, 4; Literary Club, 4; Beta Club, 4.

WYLIE, NELLE . . . Latin Club, 1, 2, 4; French Club, 3, 4; Junior Homemakers' Association, 1, 2, Treasurer, 1; Beta Club, 3, 4, President, 4; Cadette Corps, 2, 3, 4; Glee Club, 2, 3, 4; Class Play, 3; Class Historian, 4; Literary Club, 4; Most Popular, 4.



COMPLIMENTS

...OF...

MERCHANTS AND PLANTERS BANK



SAFE

SANE

SOUND



WINNSBORO

SOUTH CAROLINA

*Member Federal Deposit Insurance Corporation*



CONGRATULATIONS AND BEST WISHES

**RUFF MOTOR COMPANY**

SALES AND SERVICE

*Your FORD Dealer*

WRECKER SERVICE

Dial 215

Winnsboro, South Carolina

*Best Wishes*

**SYLVAN BROTHERS**

CLASS RINGS AND INVITATIONS

HERFF-JONES COMPANY

Columbia

South Carolina

*Honoring...*

The Seniors of Mount Zion Institute

**MCKAY GROCERY AND  
MARKET**

Dial 439

WINNSBORO

SOUTH CAROLINA

*Compliments of*

**WESTERN AUTO  
ASSOCIATE STORE**

WINNSBORO

SOUTH CAROLINA

**BEST REGARDS**

**W. A. ROBINSON**

WINNSBORO

SOUTH CAROLINA



We Honor the Seniors of '46

**VILLAGE SERVICE STATION**

"HOME OF GOOD EATS"

G. F. Bass, *Manager*

Winnsboro

South Carolina

*Compliments  
...of...*

**GEORGE R. LAUDERDALE**

WINNSBORO

SOUTH CAROLINA

*A Welcome Awaits You At*

**KOHN'S**

HOME OF CAROLYN CLOTHES

Columbia

South Carolina

*Best Regards To ...*

THE CLASS OF 1946

**HORNE'S**

WINNSBORO

SOUTH CAROLINA

*Compliments of*

**RITZ GRILL**

"No Beer Sold Here"

WINNSBORO

SOUTH CAROLINA

CONGRATULATIONS TO THE CLASS  
OF 1946

**WINNSBORO CHEVROLET COMPANY**

Dial 243

Winnsboro, South Carolina



CONGRATULATIONS TO  
THE SENIORS OF 1946  
**BELK'S DEPARTMENT STORE**

*"THE HOME OF BETTER VALUES"*



*COMPLIMENTS*  
*...OF...*  
**M. W. DOTY & SON**

DIAL 245



Winnsboro

South Carolina



Compliments of

**THOMAS & HOWARD**

WHOLESALE GROCERS

*"We Appreciate Your Business"*

Phone 174

Chester, South Carolina

**CHARLIE NORMAN**

DRY GOODS  
AND NOTIONS

*"It's a Pleasure to Serve You"*

WINNSBORO

SOUTH CAROLINA

*Saluting...*

THE SENIORS

**BLOODWORTH'S  
PHARMACY**

Winnsboro Mills

COMPLIMENTS

...OF...

**J. R. GOUDELOCK**

Winnsboro

South Carolina



# YOUR TABLE REFLECTS YOUR PERSONALITY

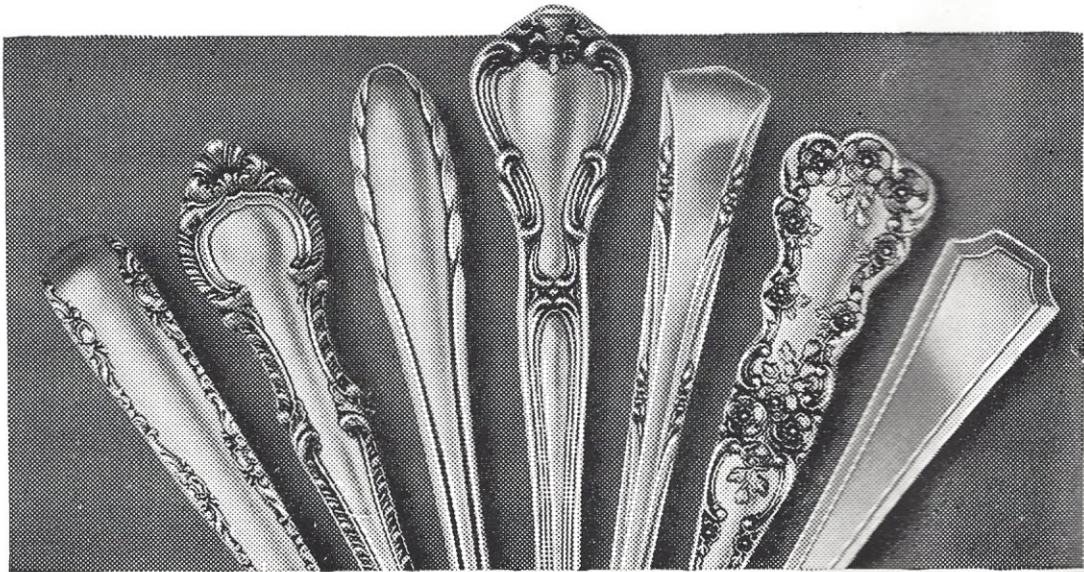
*To Select Sterling with a Reputation!*

SEE THESE GORHAM PATTERNS AT

L. C. HARDY  
JEWELER  
Winnsboro, South Carolina

PATTERNS SHOWN are representative of our excellent selection and six-piece Place Settings average about \$23 including the 20% Federal Tax.

Items available are ample to serve a four-course dinner and other desirable match-ups are guaranteed that you may complete your service. Come in and see this outstanding sterling which costs no more than the ordinary kind.



Left to Right: — CAMELLIA, ENGLISH GADROON, LYRIC, CHANTILLY, GREENBRIER, BUTTERCUP, FAIRFAX



*We Salute . . .*

THE SENIORS OF '46

**FAIRFIELD MOTOR  
PARTS, INC.**

*Wholesale and Retail*

AUTOMOTIVE PARTS  
ACCESSORIES

Dial 214

WINNSBORO

SOUTH CAROLINA

IN HONOR OF THE SENIORS  
OF 1946

**FOUCHE-ESTES  
FURNITURE CO.**

Dial 373

WINNSBORO

SOUTH CAROLINA

*Compliments  
. . . of . . .*

**EAGLE'S 5-10-25C STORE**

ELISE GROOMES  
*Manager*

WINNSBORO

SOUTH CAROLINA

WE CONGRATULATE THE  
SENIORS OF 1946

**THE  
MEN'S  
SHOP**

WINNSBORO

SOUTH CAROLINA



GROCERIES—MEATS  
**LYLES & LYLES**

Dial 475



PURINA FEEDS—HARDWARE



Winnsboro

South Carolina

COMPLIMENTS

...OF...

**LADY FAIRFIELD**

Winnsboro

South Carolina

BEST REGARDS TO THE SENIORS OF '46

**ROSE'S 5-10-25c STORE**

MISS ROBERTA DOVE, *Manager*

Winnsboro

South Carolina



BEST WISHES  
TO  
THE CLASS OF 1946  
**BANK OF FAIRFIELD**

•  
*STRENGTH*

*SAFETY*

*SERVICE*  
•

Member Federal Deposit Insurance Corporation



CONGRATULATIONS  
TO  
THE CLASS OF 1946  
**UNITED STATES RUBBER  
COMPANY**

•

•

•

Winnsboro

South Carolina



*Compliments of*

**ROYAL HOTEL AND  
RESTAURANT**

FATE THORNTON, *Proprietor*

QUICK LUNCHES

STEAKS

SANDWICHES

DRINKS

ICE CREAM

Dial 374

WINNSBORO

SOUTH CAROLINA

*Saluting...*

THE SENIORS  
**WINNSBORO  
CLEANING  
COMPANY**

WINNSBORO

SOUTH CAROLINA

HONORING THE SENIORS

**WINNSBORO BLUE GRANITE**

*"The Silk of the Trade"*



*Best Wishes*

**L. D. DUNN**  
JEWELER

"Fine Watch Repairing a Specialty"

*Compliments of*

**MAXWELL BROTHERS &  
BOLEN**

WINNSBORO

SOUTH CAROLINA

*Congratulations!*

**L. C. BRABHAM**

RADIO AND  
ELECTRIC SERVICE

Dial 259

WINNSBORO

SOUTH CAROLINA

**ECONOMY  
DRUG  
COMPANY**

PRESCRIPTION  
DRUGGISTS

*In Business For Your Health*

Dial 225

WINNSBORO

SOUTH CAROLINA

WE SALUTE  
THE SENIORS  
**PROPST'S**

WINNSBORO

SOUTH CAROLINA

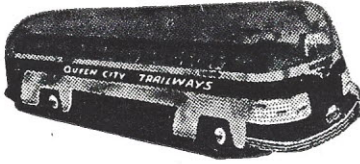
*"The store where you get your  
money's worth"*

**FRANK NORMAN &  
BROTHERS**

WINNSBORO

SOUTH CAROLINA





SERVING  
North Carolina, South Carolina,  
Tennessee and Georgia  
with

UNEXCELLED MOTOR BUS SERVICE

**QUEEN CITY COACH COMPANY**

417 West Fifth Street

Charlotte 1, N. C.

*SENIORS...*

*Best Wishes for a Successful Future*

**WINNSBORO PETROLEUM COMPANY**

*"Home Folks"*

DISTRIBUTORS

Postal Service Station

Royal Service Stations 1 and 2

Winnsboro, South Carolina



*BEST WISHES*

**THE COLONIAL DRUG AND SUNDRIES COMPANY**

*We carry a complete line of nationally advertised drug sundries.*

THANK YOU . . .

IT'S A PLEASURE TO SERVE YOU

Dial 279

Winnsboro, South Carolina

**GOODRICH TIRES AND TUBES**

*BEST WISHES*

**WINNSBORO RECAPPING COMPANY**

HAROLD M. RENWICK, Manager



*COMPLIMENTS*

*...OF...*

**PEARCE-YOUNG-ANGEL COMPANY**



Chester

South Carolina

**MCMASTER'S**

Since 1843

**DRUGS**

*"The World's Finest People Pass Through Our Doors — OUR CUSTOMERS."*

Winnsboro, South Carolina



U. G. DESPORTES & COMPANY

GOODYEAR TIRES  
HAY AND FEED STUFF  
HULLS AND MEALS  
FARM IMPLEMENTS

•  
*RETAIL*  
•

Winnsboro

South Carolina



CONGRATULATIONS

COOPER'S  
FURNITURE  
COMPANY

WINNSBORO

SOUTH CAROLINA

PEOPLE EXPECT  
MORE  
AT  
AND GET IT!

*Bridges*  
FURNITURE CO.

Columbia, South Carolina

HONORING... THE SENIORS OF '46

PHILLIPS GRANITE COMPANY

MONUMENTS OF WINNSBORO GRANITE

RION, SOUTH CAROLINA



COMPLIMENTS  
...OF...

**MARTIN'S  
SERVICE  
STATION**

Dial 436

WINNSBORO

SOUTH CAROLINA

Paul Dove, Manager

COMPLIMENTS  
...OF...

**WINNSBORO  
FURNITURE  
COMPANY**

WINNSBORO

SOUTH CAROLINA

Hayne McMeekin, Owner

OFFICE SUPPLIES

JOB PRINTING

*Only Newspaper in Fairfield County*

**THE NEWS & HERALD COMPANY**

"Born 1844 – Still Going Strong"

SUBSCRIPTION RATES – \$1.50 PER YEAR

Dial 335

Winnsboro

South Carolina



## ACKNOWLEDGEMENT

Here's your 1946 TUSITALA — a part of your school life at Mount Zion — to take with you wherever you go in the life for which Mount Zion has prepared you.

We hope that in its pages you will find words and pictures which will remind you of the "good ole' days at M. Z. I." — of the people, of the studies, and of the various activities which made up your high school days.

An annual like this does not just happen — it is a product of the united efforts of hard-working staff members, and faculty advisors —

Miss Emma Hope  
Miss Sarah Francis Lee  
Miss Charlotte Plowden  
Miss Joann Woods  
Miss Nina Young

whose ever-ready suggestions helped to make this edition possible.

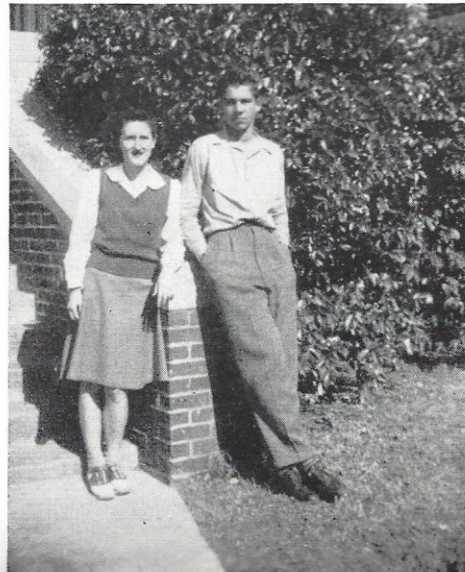
Definitely not to be overlooked is the co-operation and interest of the student body, whose strong support inspired the staff to publish an annual of which each student could be proud.

Finally, to our advertisers, we extend our deep appreciation for their interest in our school and in our book.

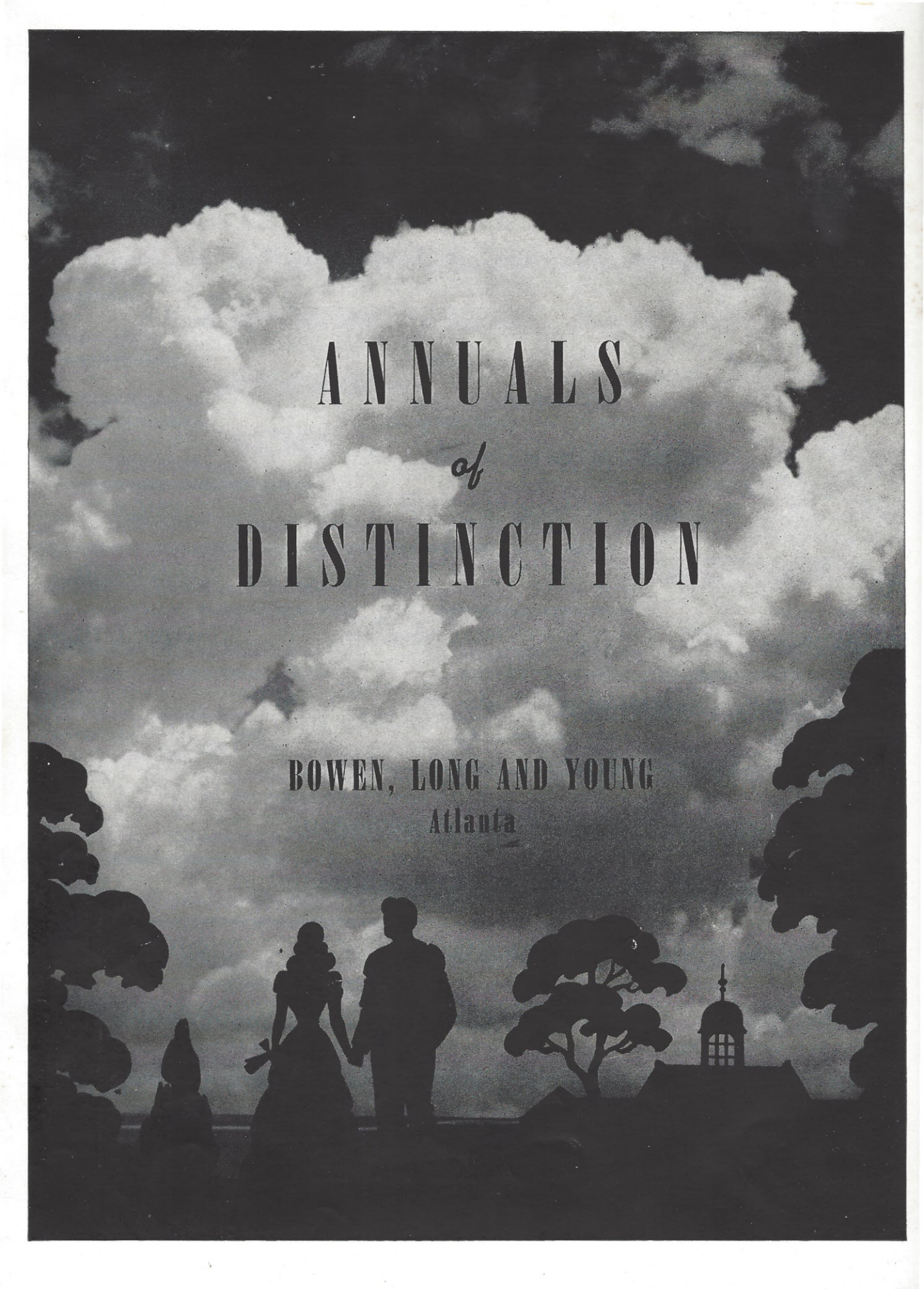
To all of these people which we have mentioned, and many other contributors, we take this means of expressing our sincere thanks. We assure you that your co-operation was appreciated.

Editor-in-Chief — "*Skeet*"

Business Manager — "*Becky*"





The background of the entire page is a black and white photograph of a sky filled with large, fluffy clouds. At the bottom of the image, there are dark silhouettes of trees and a building with a dome. The text is overlaid on the sky.

ANNUALS  
*of*  
DISTINCTION

BOWEN, LONG AND YOUNG  
Atlanta

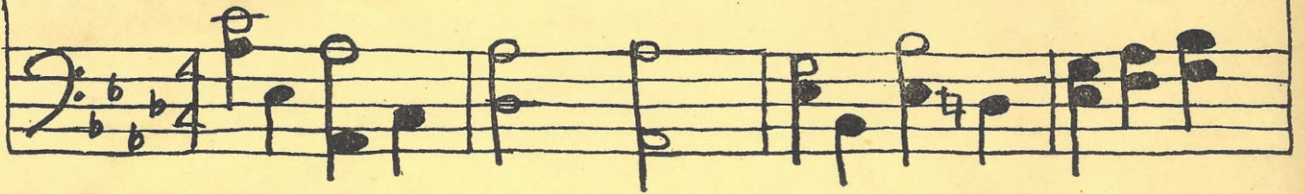








ON THE HILLS OF DEAR OLD FAIR-FIELD PROUDLY STANDS OUR SCHOOL



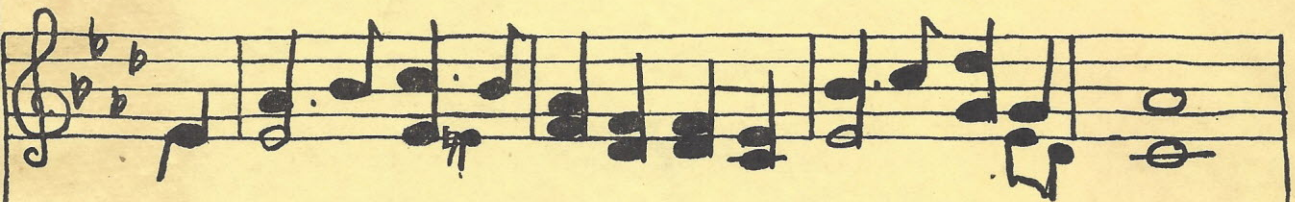
HAIL, HAIL TO THEE OUR ALMA-MATER CON-QUERORS PRE-VAIL.







Lo-yal stu-dents ev-er lov-ing Hon-OR and o - Bey



All Hail to thee our al-ma-ma-ter, Mount Zion, all Hail.





