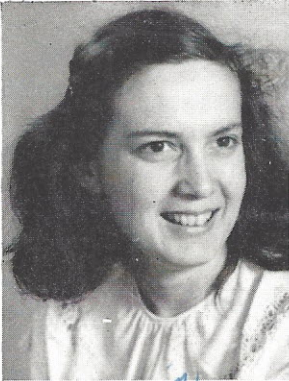
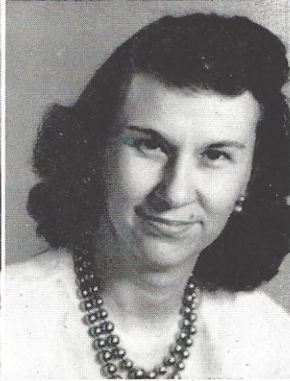


FACULTY

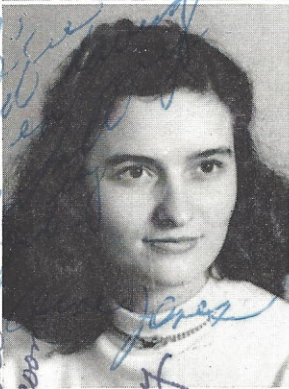


MILDRED MILLIGAN HARRISON
NEWBERRY COLLEGE, B.S.
Math, Science



CLAUDIA SCHUMPERT HINSON
NEWBERRY COLLEGE, B.A.
Latin, English, History

*Colleen, I have really enjoyed teaching you this year.
Valerie C. Hinson*



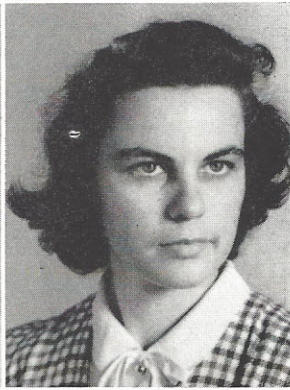
ANNE RICHARDSON JONES
COLUMBIA COLLEGE, B.A.
English, History



JOHN THOMAS HARRISON
NEWBERRY COLLEGE, B.S.
Science, Citizenship



LUGENIA MORGAN RAY
WINTHROP COLLEGE, B.A.
Science, Biology



EVELYN LUCILE WARNER
WINTHROP COLLEGE, B.A.
Math, Geometry



KATHLEEN LEMMON
WINTHROP COLLEGE, B.A.
GRADUATE WORK
UNIVERSITY OF S. C.
Algebra, Arithmetic



EDMOND E. TILLER
UNIVERSITY OF SOUTH CAROLINA, B.A.
History

*Dear Colleen,
It certainly has been nice knowing you.
Anne Richardson Jones*

"Thou canst not say I did it;