

# FACULTY

SARAH FAIRBANKS BULL  
UNIVERSITY OF SOUTH CAROLINA, B.A.  
*English*



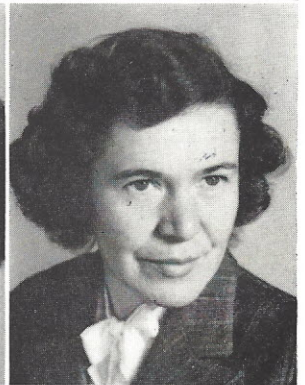
JANE ELIZABETH ROBERTSON  
COLUMBIA COLLEGE, B.S.  
*Home Economics*

ELAINE EWING  
COLUMBIA COLLEGE, B.A.  
*Business English, French, Glee Club*

NANCY CAROLINE WYLIE  
WINTHROP COLLEGE, B.A.  
GRADUATE WORK  
UNIVERSITY OF VIRGINIA, UNIVERSITY OF CALIFORNIA, DUKE UNIVERSITY  
*English*

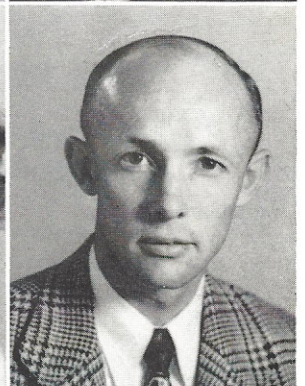


FRANCES V. SMITH  
WINTHROP COLLEGE, B.S.  
*Commerce*



MILDRED ALFRED A ALLEN  
WINTHROP COLLEGE, B.A.  
*Librarian*

LELIA OATES  
ERSKINE, B.A.  
*Bible*



THOMAS W. GLADDEN  
CLEMSON, B.S.  
*Agriculture*

*Cullen, you are a very sweet girl & I have enjoyed returning you this past year. Please stop her. Feb.*

*Cullen, I wish I could have taught you this year 'cause you're so smart and please I'll miss you very much Elaine Ewing*

*You have been on my heart lately. Love*

*Nancy C. Wylie*

*never shake Thy gory locks at me"*