

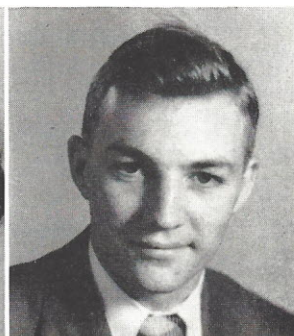
SENIORS

CONSTANCE JOYCE BASS "JOY"

Math Club 1; Basketball 1; Latin Club 1, 2; Glee Club 2, 3, 4; Class Play 2, 3; Beta Club 2, 3, 4; Sextet 2, 3; French Club 3; J. H. A. 3; Octet 4; Typing Staff of TUSITALA 3; Future Teachers Club 4; Typing Staff of *Campus Comments* 4; Photo Editor of TUSITALA 4.

JERRY BENNETT

Glee Club 1, 2, 3, 4; Quartet 1, 2, 3; Latin Club 1; Football 3; Typing Staff TUSITALA 3; *Campus Comments* 4, Reporter 4; Friendliest 4; Junior Class Play 3.

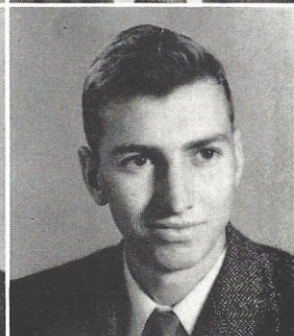


LUCY ANN BOULWARE "PUGGY"

Glee Club 1; Latin Club 2, Vice-President 2; Math Club 1; French Club 3, 4; Beta Club 3, 4; Basketball 2; Cheerleader 4; *Campus Comments* 4, Sports Editor 4; TUSITALA Staff 3, Advertising 3; Class Play 3; Girls' State 1947; J. H. A. 1.

TALMADGE THOMAS BOULWARE "TAL"

Latin Club 1; Football 3, 4; F. F. A. 2, 3.

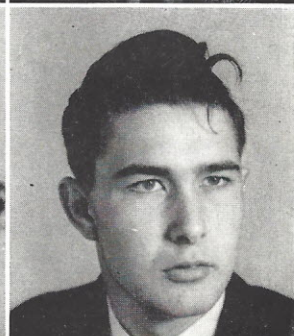
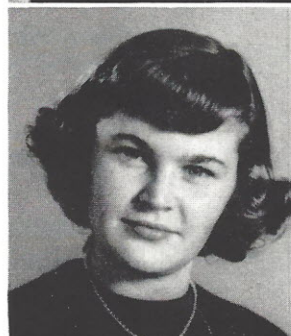


BETTYSUE BRABHAM "BET"

Latin Club 1, 2; French Club 3, 4; Beta Club 2, 3; Glee Club 2, 3, 4; Sextet 2, 3; Octet 4; Math Club 1; Future Teachers Club 4; J. H. A. 1.

GRADY CLINTON BRANHAM "CHICKEN"

Football 3, 4; Glee Club 4.



RILEY McMASTER BRICE, JR.

Class Play 2, 3; Canteen 3, Assistant Manager 4; Math Club 1; TUSITALA Staff 3, Assistant Editor 3, Business Manager 4; Mental Contest 3; Most Likely to Succeed 4.

MARY BABB CANNON

Latin Club 1, 2; French Club 3, 4; Math Club 1, 3, President 3; Beta Club 2, 3, 4; Glee Club 3, 4, Vice-President 4; Sextet 2, 3; Octet 4; Basketball 2, 3; Freshman Class Treasurer 1; Junior Class Secretary 3; Student Council 2, Treasurer 2; TUSITALA Staff 3, Art Editor 3, 4; Art Editor *Campus Comments* 4; Mental Contest 2, 3; Best All-Round 4; Girls' State 1948; Marshal 2, 3.

