

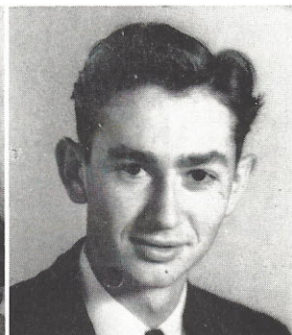
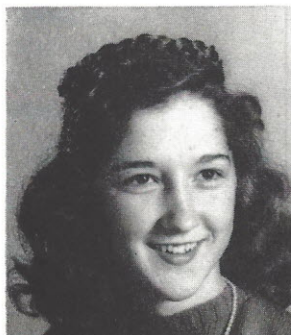
CLASS

DOROTHY CHRISTINE GEORGE "CHRIS"

Latin Club 1; Math Club 1, 3; J. H. A. 1; Basketball 1, 2, 3, 4; Class Play 2; French Club 3, 4; Future Teachers Club 4; Reporter *Campus Comments* 4, Athletic Editor 4; Most Athletic 4; Science Club 2.

JOHN CORNWELL GIBSON "GIP"

French Club 3, 4.



MARTIN LUTHER GUNTER "LUKE"

French Club 3; Football 4; Basketball 2, 3; Baseball 3, 4; Math Club 3; Glee Club 4; Typing Staff 4; Most Talented 4.

DOROTHY CREIGHTON HARDY "DORIS"

Glee Club 1, 2, 3, 4; J. H. A., Secretary 1; Beta Club 2, 3; French Club, Treasurer 3; Band 3, 4.



BETTY BEATRICE HARTIN "BOOTS"

J. H. A. 1, 2.

JACK BERKELEY HERNDON "JACKIE"

Student Council 1, 2; Latin Club 1, 2; Beta Club 2; French Club 3, 4; Football 2, 3, 4; Baseball 3, 4; Class Vice-President 3; Class Treasurer 4; Math Club 1, 2, Treasurer 2; Mental Contests 3; Glee Club 4.



MARY LOIS HOLLIS "HOLLY"

J. H. A. 1; Glee Club 1, 2, 3, 4, Secretary 3; Science Club 2; Speech Club 2; Sextet 2, 3; Math Club 3; French Club 3, 4; Octet 4; Future Teachers Club 4; Friendliest 4.

REVONNE CLIFTON HUNT "VONNIE"

Student Council 1, 2, Vice-President 2; Beta Club 2, 3, 4, Treasurer 3, 4; French Club 3, 4, President 4; Latin Club 1; Math Club 1; Football 1, 2, 3, 4, Co-Captain 4; Basketball 1, 2, 3, 4; Glee Club 1, 3, 4; Class Play 2, 3; *TUSITALA* Editor-in-Chief 3; Cutest 4.

