

SENIOR



WALKER BENNETT KIRKPATRICK

Student Council 1; Math Club 1, 2; Glee Club 1, 4; Cheerleader 1, 3; Beta Club 4, Assistant Business Manager 4; Class Play 2.

BETTY LOFTIN

Glee Club 1; Basketball 1, 2, 3, 4; Math Club 1, 2; J. H. A. 1; TUSITALA Staff, Photo Editor 3, Typing Staff 3.

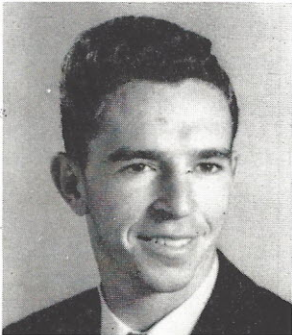


HELEN WARDLAW McCANTS

Glee Club 1, 2, 4; J. H. A. 1; Math Club 1; Latin Club 1, 2; Basketball 2, 3; Band 3; TUSITALA Staff, Circulation 3; Science Club 2.

NELLE ELLIOTT McCANTS

Glee Club 1, 2, 3, 4, President 1; Latin Club 1, 2, Secretary 2; Math Club 1; J. H. A. 1, Vice-President; Basketball 2, 3 (B Squad); Beta Club 2, 3, 4, President 4; Band 3, 4; Class Play 2, 3; D. A. R. Medal 4; French Club 3, President 4; Student Council 4; TUSITALA Staff 3, Circulation Assistant 4, Circulation Manager; Wittiest 4; Octet 4; Girls' State 1947.



RUBY ALLIE McFADDEN "WILDCAT"

Math Club 1; J. H. A. 1, 2; Beta Club 2, 3.

JAMES FURMAN MCGILL "MAC"

Football 1, 2, 3, 4, Captain 4; Basketball 1, 2; Glee Club 1, 2, 3, 4; Baseball 3, 4; Typing Staff *Campus Comments* 4; Most Athletic 4; Shrine Bowl 4.



LUCY VIRGINIA McMASTER "DINNY"

Glee Club 1, Treasurer 4; J. H. A. 1; Latin Club 1, 2; French Club 3, 4; Beta Club 3; Class Play 2, 3; Girls' State 1948; *Campus Comments* 4.

BONNIE SUE PATE "BONA"

Latin Club 1; Math Club 1, 2; Glee Club 1; Basketball 1, 2, 3, 4.