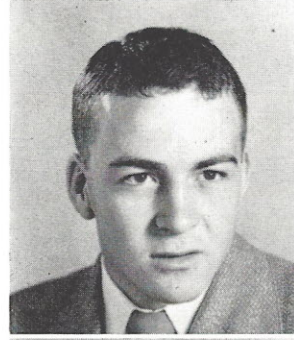


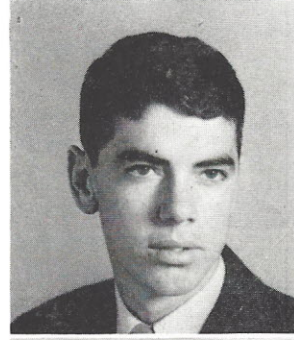
CLASS

Best of everything to a sweet girl!
Gene
 ↓

MILTON EUGENE PATE "GENE"
 Latin Club 1, 2; Math Club 1; Football 1, 2, 3, 4, Captain 3; Glee Club 3, 4; Shrine Bowl 4; Most Valuable Player Award 4; Beta Club 2, 3, 4, President 3; Basketball 2, 3, 4; Class Play 2, 3; State Mental Contest 2, 3; French Club 3, 4; Band 3, 4; Student Council 2, 3, 4, Secretary 2, President 3; Class President 2, 4; Boys' State 1948; Best All-Round 4; Athletic Editor 4.

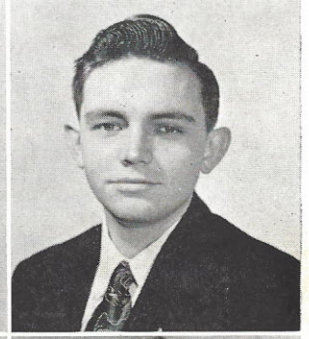


AUDREY JEAN PEAKE "SIS"
 Latin Club 1, 2; Math Club 1; J. H. A. 2; Class Play 3; Typing Staff, TUSITALA 3; Beta Club 2, 3, 4; Associate Editor TUSITALA 4; Student Council 4, Secretary 4; Glee Club 4.



SIM HARRIS PLYLER, JR. "SIMMY"
 Latin Club 1, 2; Math Club 1; Basketball 4; Baseball 4; Typing Staff TUSITALA 4; Glee Club 1.

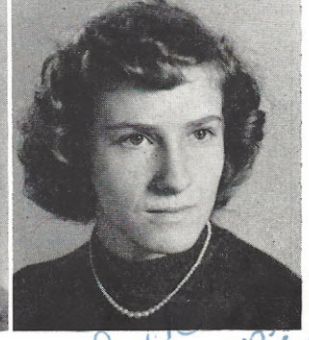
TURNICE ANNE POPE "TEENE"
 Latin Club 1, 2; Beta Club 2, 3, 4; Glee Club 2, 4; French Club 3; Math Club 1; Future Teachers 4.



LAWRENCE EDWARD POSTON "FLAGPOLE"
 Basketball Manager 3; Typing Staff *Campus Comments* 4; Cheerleader 3.

CLIFFORD CHENEY POWELL "BRAIN"
 Transferred from Union Point High School, Metter, Ga.; Beta Club 4.

MARTHA ELIZABETH RAMSEY "LIBBA"
 Latin Club 1, 2; Basketball 3, 4; Beta Club 2, 3, 4; French Club 3, 4; Math Club 2; Business Manager TUSITALA 3; Glee Club 1.



FARRIS WANDA RANDALL
 Glee Club 1; Math Club 1, 2.

*Best of Luck + Love
 always - Libba*

*Love + Luck
 to "u" always
 Farris*