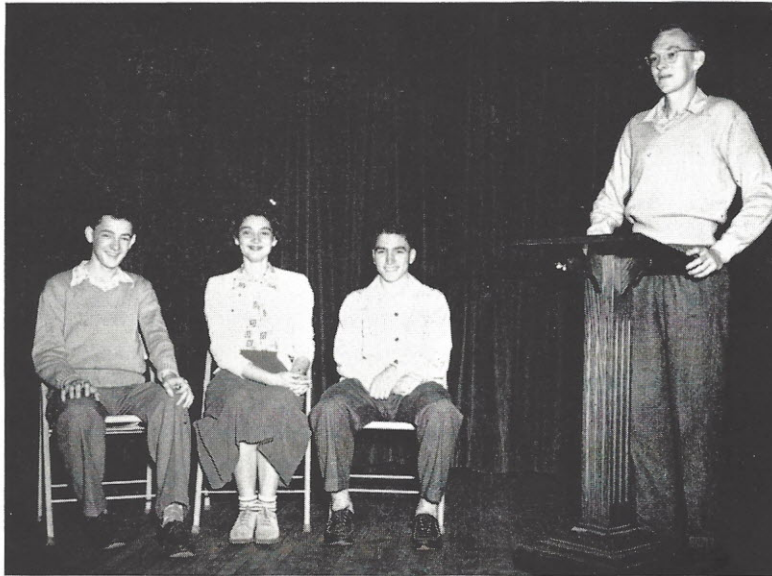


STUDENT COUNCIL



"ZAN" TURNER *President*
 HERMAN PRICE *Vice-President*
 AUDREY PEAKE *Secretary*
 "BUD" SHAW *Treasurer*



Miss Nancy Wylie, *Faculty Advisor*; Bobby Stephenson, Edward Lathan, Jerry Walsh, Barbara Christie, Nelle McCants, Gene Pate, James Shaw, Zan Turner, Audrey Peake, George Wells, Herman Price, Joan Watts, Mary Miller, Peggy Mincey, Maxine Shaw.