

SENIORS

ATKINSON, BARBARA CAROL "BOB"
 Science Club 1; Math Club 1; Glee Club 4; J. H. A. 1.

BAGGOTT, ELEANOR GLENN
 J. H. A. 2; Latin Club 1; Band 2; Glee Club 4; Drama Club 4.

BECKHAM, ALVA "BECK"
 J. H. A. 1, 2, President 1; Speech Club 2; Glee Club 1, 2, 3, 4, Vice-President 1; Cheerleader 2, 3, Head Cheerleader 3; Majorette 3, 4; Drama Club 4; Class Play 2, 3; Distributive Education Club President 4; *Campus Comments* Reporter 2; "Friendliest" 4; Harvest Queen 4; "Miss Senior" 4.

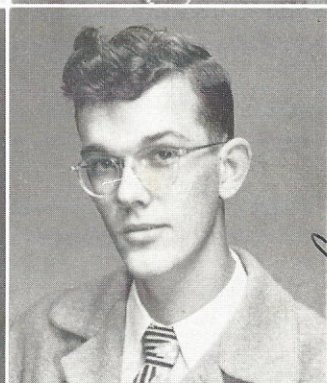
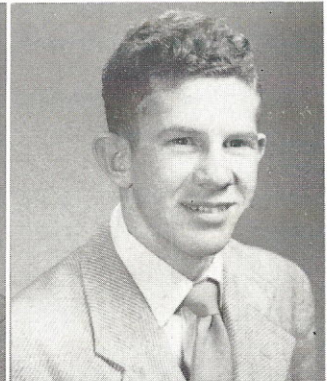
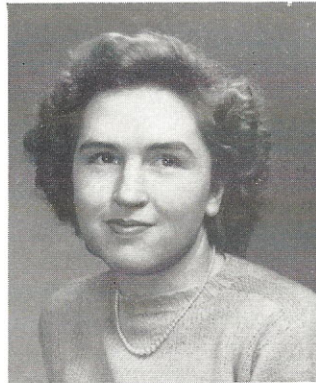
BRANHAM, THOMAS JEROME "RED"
 Football 2, 3, 4; Basketball 1, 2, 3, 4; Baseball 2, 3, 4; Glee Club 2, 3; Band 2, 3, 4; *Campus Comments* Sports Editor 4; Distributive Education Club 4, Vice-President 4; "Wittiest" 4.

BROOME, FRANCES RUBY
 J. H. A. 1, 2; Drama Club 4.

BRICE, BETTIE ANN
 J. H. A. 1, 2, 4; Glee Club 4; Drama Club 4.

BROWN, PATTY SUE "PATSY"
 J. H. A. 1, 2; Basketball 1; Glee Club 4; Drama Club 4; Class Play 2.

CAMERON, SPENCER MALLOY
 Football 1, 2; Science Club 1; French Club 3.



*BOB of Lunch
 to my favorite teacher...
 Malloy Cameron*