

SENIORS

*Best of luck
Always & never
Have enjoyed being in
your Business Math class.
Love
Catharine*



CATHCART, MARGARET ANNE
Basketball 1, 2; J. H. A. 1, 2; Glee Club 1, 4; Drama
Club 4.



CATHCART, CATHERINE GREER "CAT"
J. H. A. 1; Basketball 1, 2; Glee Club 1.

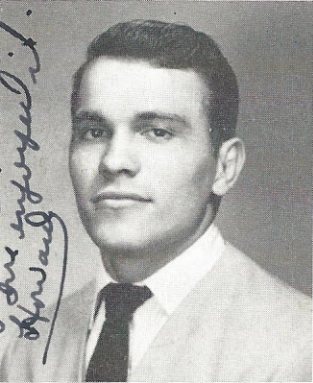


COGDILL, BETTY AUBREY
J. H. A. 1, 4; Drama Club 4; Glee Club 4; Science
Club 1; Math Club 1.

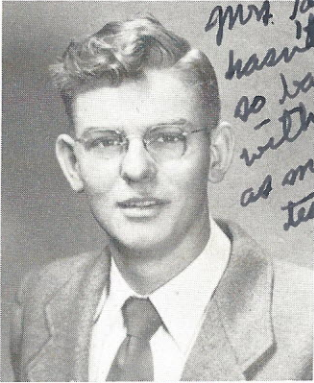


COLEMAN, PATRICIA LUENA "PAT"
Latin Club 1; J. H. A. 2; Band 1, 2, 3; Glee Club
2, 3, 4; Drama Club 4; Cheerleader 1; Basketball
1, 2, 4.

*I don't think I've ever
had a teacher as good
as you are.
I've enjoyed it.
Howard*



COLLINS, HOWARD ROCKWELL
Class Treasurer 2; Football 1, 2, 3, 4, Captain 4;
Glee Club 3; Math Club 2; Vice-President of Class
4; Secretary and Treasurer of Distributive Education
Club 4.



*Mrs. Taylor, school
hasn't been
so good
with you
as my
teacher.
Willson*

COLLINS, JAMES WILBUR
Distributive Education Club 4.



CRECELIUS, JOAN NELSON
Latin Club 1; Math Club 1, 2, 3, 4; Beta Club 3, 4;
TUSITALA Staff, Art Editor 4, Assistant Art Editor 3;
Campus Comments Art Editor 4; Basketball 4; "Most
Talented" 4; Harvest Queen 3.



CROXTON, ANNIE MAE "MAE"
Basketball 1, 2, 3, 4; Glee Club 4; Drama Club 4;
Science Club 1; Math Club 1.