

DOUGLAS, LEONARD

“HEAD”

Beta Club 3, 4; French Club 3, 4; TUSITALA Business Manager 4; Drama Club 4; Class Play 3; State Mental Contest 3; Future Teachers Club 4; “Most Dependable” 4.

DRAWDY, BEVERLY

“BECKY”

Glee Club 4; Drama Club 4.

ENLOE, THOMAS CHESLEY

“CHENA”

Football Manager 2.

FOWLER, SARA FRANCES

“SIS”

J. H. A. 1; Glee Club 4; Drama Club 4; Science Club 1; Math Club 1.

GARTMAN, JANETTE EVON

Math Club 2; Class Play 2, 3; Glee Club 4; Drama Club 4.

GOUDELOCK, DANIAL STEVENSON

“PUNEY”

Glee Club 2, 3, 4, President 2; Quartet 2, 3; Band 1, 2, 3, 4; “Volunteers” 2, 3, 4; French Club 3, 4, Treasurer 4; Latin Club 1; Science Club, President 1; Beta Club 3, 4, Treasurer 4; Student Council, Vice-President 2; Class Treasurer 2, Class Vice-President 3; Football 2, 3, 4, Captain 4; TUSITALA Staff, Assistant Sports Editor 3; Class Play 2, 3; State Mental Contest 1, 2, 3; Speech Club 1; Marshal 3; “Best All-Round” 4; Future Teachers Club 4; Drama Club President 4; Horse Bowl, Most Valuable Player 4.

GROOMS, BILLIE JEAN

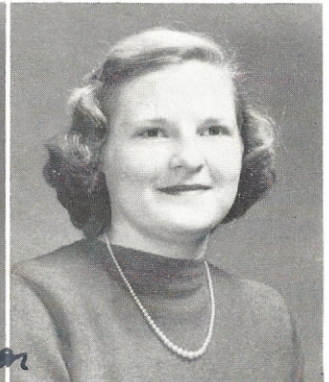
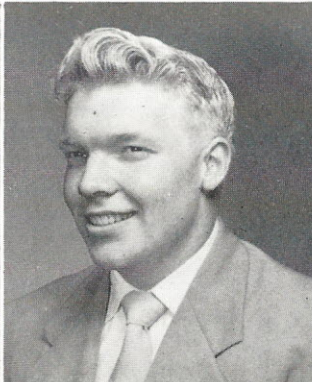
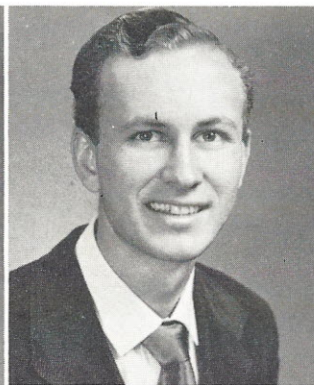
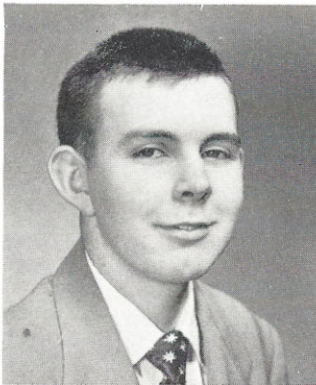
“BILLIE”

Glee Club 4; Drama Club 4; Distributive Education Club 4.

HEUSTESS, MARY LORETTA

“RETTA”

Basketball 2; Glee Club 1, 4; Latin Club 1; Math Club 1, 2, 3, Vice-President 3; French Club 3, 4; Future Teachers Club 3, 4, Vice-President 3, President 4; Beta Club 3, 4, Vice-President 4; Band 2, 3, 4; “Volunteers” 2, 3, 4; Class Play 2, 3; Marshal 3; State Mental Contest 1, 2; *Campus Comments*, Club News Editor 4; “Palmetto Girls’ State 1949”; TUSITALA Staff 3, 4, Assistant Literary Editor 3, Editor-in-Chief 4; “Best All-Round” 4.



*The very best a
luck to me by
the nicest person
I have ever
known. I have
enjoyed being student
of by your student
and will always remember
you.
Billie Jean*