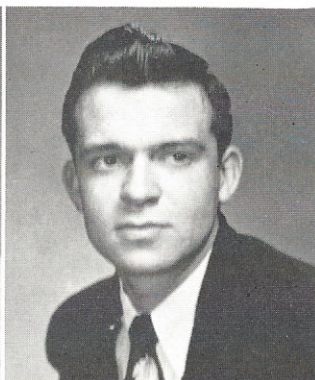
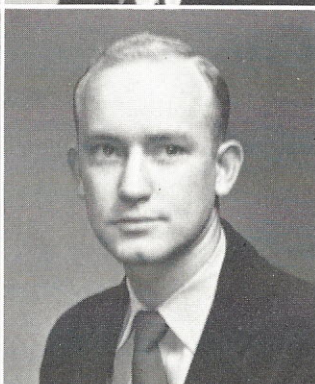
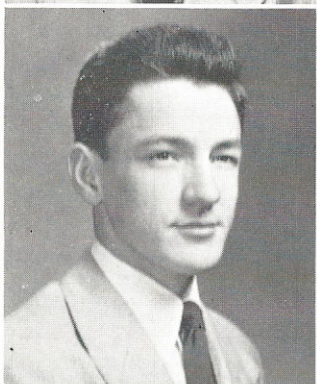


# SENIORS



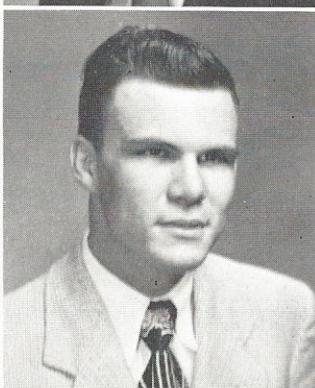
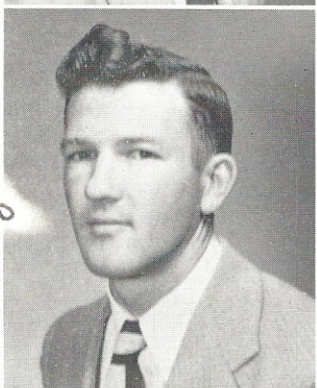
PRICE, HERMAN PRESTON "TEENY"  
 Student Council Vice-President 3; State Mental Contest 3; Basketball 2, 3, 4, Captain 3; Baseball 2, 3, 4, Co-Captain 4; Football 4; Drama Club 4; Science Club 1.

REYNOLDS, BOBBY GENE  
 Baseball 2, 3, 4.



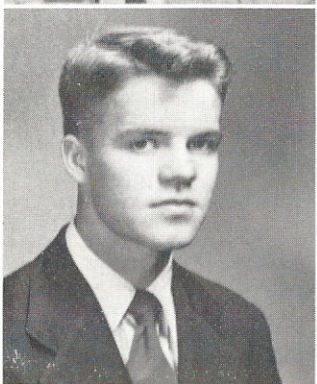
SHAW, JAMES LEAGON "BUD"  
 Football Manager 3; Basketball 3, 4; Cheerleader 1, 4; Band 3, 4; Glee Club 3, 4; Student Council 1, 2, Treasurer 3; Beta Club 3; Class Play 3; Science Club 1; Future Teachers Club 4; Drama Club 4.

SIMS, WILLIAM CLAUDE "BILL"  
 Football 2, 3, 4; Glee Club 3; Baseball 2, 3; F. F. A. Treasurer 4.



SIMS, GRADY CLARENCE "SHORTY"  
 Distributive Education Club 4; Baseball Manager 3.

SMITH, MARION CURLETTE  
 Football 1, 2, 3, 4; Glee Club 3, 4; French Club 3, 4; Math Club 4; Science Club 1.



STEPHENSON, JOE JOHN "LITTLE JOE"  
 Latin Club 1; Band 2, 3, 4; Glee Club 2, 3; Football 4; Assistant Business Manager of TUSITALA 4; Circulation Manager of *Campus Comments* 4; "Volunteers" 2, 3, 4; Class Play 2; Student Council 4; Drama Club 4; Class President 4; "Boys' State 1949"; "Cutest" 4.

STEVENSON, ANNIE LAURA "PEE WEE"  
 Latin Club 1; J. H. A. 2; Band 1, 2; Glee Club 3, 4; Drama Club 4; Basketball 2, 3, 4.

*I have enjoyed being one of your students. Clarence*