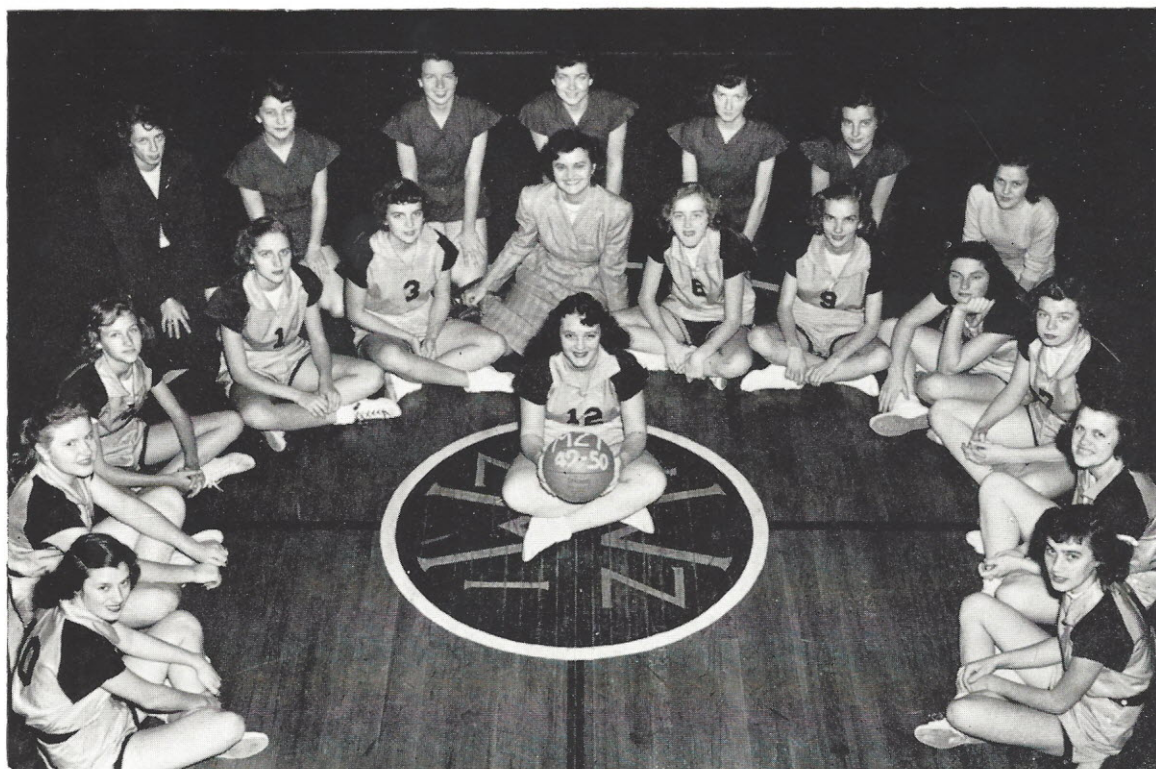


# BASKETBALL



"Mickey" Shaw, F.; Annie Mae Croxton, G.; Peggy Mincey, F.; Loretta Mincey, F.; Dorothy Jane Sandifer, G.; Miss Maner, *Coach*; Lucy Ann Robinson, F.; "Tina" Stevenson, G.; Betty Macfie, G.; Susanne Crawford, F.; "Pat" Coleman, G.; Annie Laura Stevenson, F.; "Boots" Holsonback, *Captain*. *Second Row*: Mary Alice Crawford, *Manager*; Virginia Ruth Davis, Glenda Hackle, Mary Ella Raley, Georgie Mae Willing, Willie Mae Bonds, Joan Watson.



MARY ALICE CRAWFORD, *Manager*  
MISS MANER, *Coach*  
"BOOTS" HOLSONBACK, *Captain*

## GIRLS' BASKETBALL RESULTS

Mt. Zion . . .	36	Jenkinsville . . .	43
Mt. Zion . . .	48	Newberry . . .	31
Mt. Zion . . .	28	Eau Claire . . .	14
Mt. Zion . . .	40	Jenkinsville . . .	38
Mt. Zion . . .	21	Camden . . .	46
Mt. Zion . . .	37	B.-C. . . . .	34
Mt. Zion . . .	28	Lancaster . . .	46
Mt. Zion . . .	26	University H. . .	40
Mt. Zion . . .	31	Camden . . .	52
Mt. Zion . . .	29	Newberry . . .	24
Mt. Zion . . .	34	Olympia . . .	30
Mt. Zion . . .	37	Chester . . .	15
Mt. Zion . . .	34	B.-C. . . . .	42
Mt. Zion . . .	31	Chester . . .	23
Mt. Zion . . .	38	Eau Claire . . .	18
Mt. Zion . . .	26	Olympia . . .	35
Mt. Zion . . .	26	Lancaster . . .	41

## TOURNAMENT

Mt. Zion . . .	30	Chester . . . . .	22
Mt. Zion . . .	39	York . . . . .	52
Won 10—Lost 9			