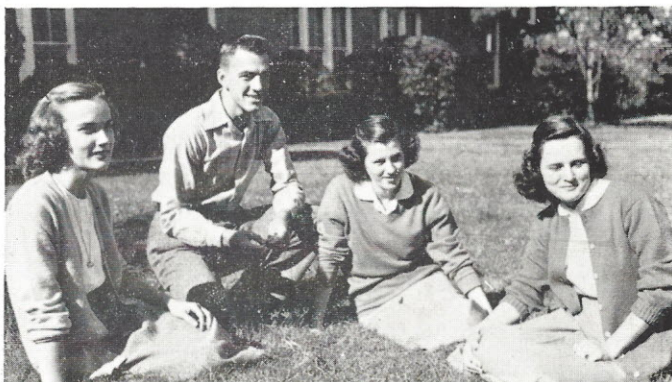


# Math Club

## OFFICERS

MARY HELEN CHRISTIE . . . *President*  
 "MICKEY" SHAW . . . *Vice-President*  
 "TINA" STEVENSON . . . *Secretary*  
 JOEL PATE . . . . . *Treasurer*  
 MISS LEMMON . . . . . *Sponsor*



"TINA" STEVENSON, JOEL PATE, "MICKEY" SHAW, MARY HELEN CHRISTIE.



"Jiggs" Jeffers, Mary Helen Christie, Barbara Hollis, Joan Watson, Jeanette Watson, Miss Lemon, Leon Hunt, Andy Turner, "Mickey" Shaw, Barbara McFadden, Loretta Mincey, Peggy Mincey, Dorothy Jane Sandifer, "Stokes" Martin, George Wells, Joan Rutledge, "Tina" Stevenson, Julia Ann Wilkes, Mary Alice Crawford, Colleen Dean, Betty Macfie, Louise Dunn, "Bobby" Jean Reed, Mary Frances Pope, Louise Raley, Charles Gibson, Marion Jennings, Lucy Ann Robinson, Ann Smarr, Claudette Sims, Ed Jordan, "Rip" Lane, Joel Pate, Miriam Stevensons, Carolyn Weed, Mary Catherine McMaster, Loretta Brinson, Mary Ann Meng, Johnnie Mae Cameron, Jean Farthing, Tommy Ruff, Furman Walker.