

The
1950

Jusitola

THE 1950

Tusitala

Dedication



To our annual adviser, Mrs. Claudia Hinson, whose cooperative spirit, inspiring enthusiasm, and sincere interest in the students of Mount Zion and their activities has endeared her to our hearts, we dedicate with gratitude this, our 1950 TUSITALA.

CLASS OF '50.

Administration



MR. LORAMER MCKNIGHT
Superintendent



MR. WILLIAM R. PRICE
Principal



MR. J. W. JELKS, MR. W. A. SINGLETERRY, MRS. J. S. KETCHIN, MR. T. K. McDONALD, DR. S. C. BYRD, MR. J. RILEY McMASTER. *Absent from Picture:* M. H. DOTY, *Chairman*; MRS. S. R. McMASTER, MR. A. E. DAVIS.



Faculty

CLAUDIA SCHUMPERT HINSON

NEWBERRY COLLEGE, B.A.

Latin, English

ANNE RICHARDSON JONES

COLUMBIA COLLEGE, B.A.

English

JOHN THOMAS HARRISON

NEWBERRY COLLEGE, B.S.

Science, Citizenship

KATHLEEN LEMMON

WINTHROP COLLEGE

UNIVERSITY OF SOUTH CAROLINA, B.A.

GRADUATE WORK, UNIVERSITY OF SOUTH CAROLINA

Algebra, Geometry

NANCY CAROLINE WYLIE

WINTHROP COLLEGE, B.A.

GRADUATE WORK, UNIVERSITY OF VIRGINIA
UNIVERSITY OF CALIFORNIA, DUKE UNIVERSITY

English

FRANCES V. SMITH

WINTHROP COLLEGE, B.S.

Commerce

MILDRED ALFREDA ALLEN

WINTHROP COLLEGE, B.A.

Librarian

THOMAS W. GLADDEN

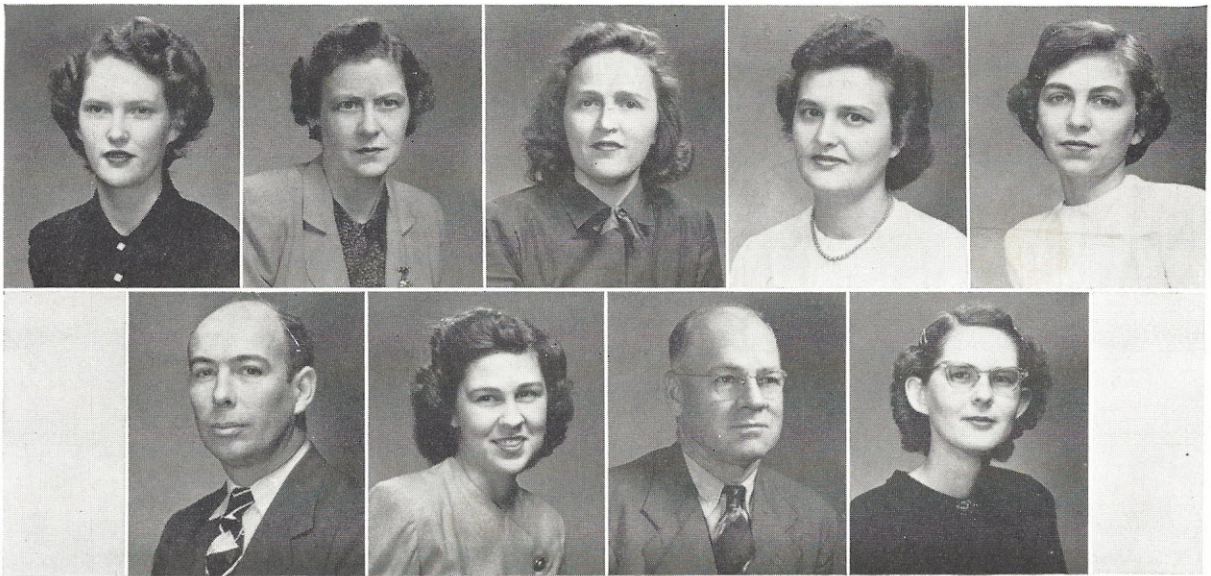
CLEMSON COLLEGE, B.S.

Agriculture

LOUISE BUFORD

COLUMBIA COLLEGE, B.A.

Math



Faculty

KATIE L. JOHNSON
 WINTHROP COLLEGE, B.A.
History, Math

HELEN R. TAYLOR
 LANDER COLLEGE, B.A.
 GRADUATE WORK, UNIVERSITY OF SOUTH CAROLINA
Science, Business Arithmetic, Distributive Education

MILDRED WOOD
 LIMESTONE COLLEGE, B.S.
 GRADUATE WORK, WINTHROP COLLEGE
Home Economics

MARY M. MANER
 WINTHROP COLLEGE, B.S.
Biology, Physical Education

ETHEL LANCASTER
 WINTHROP COLLEGE, B.A.
English, French

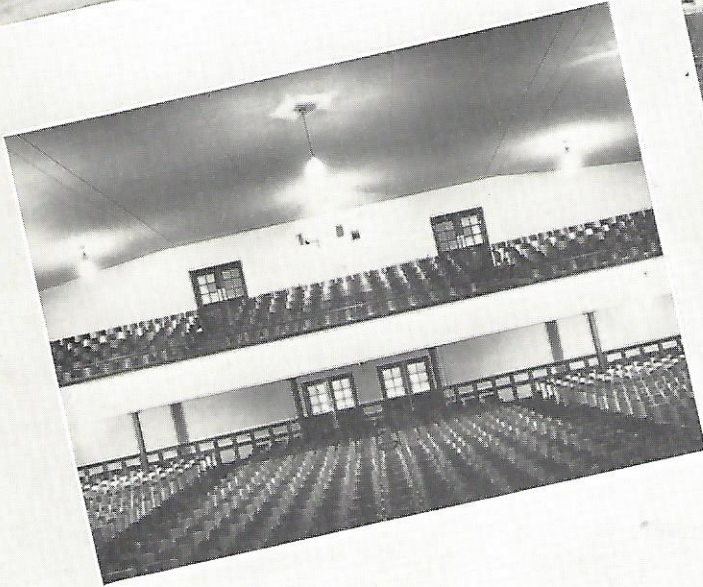
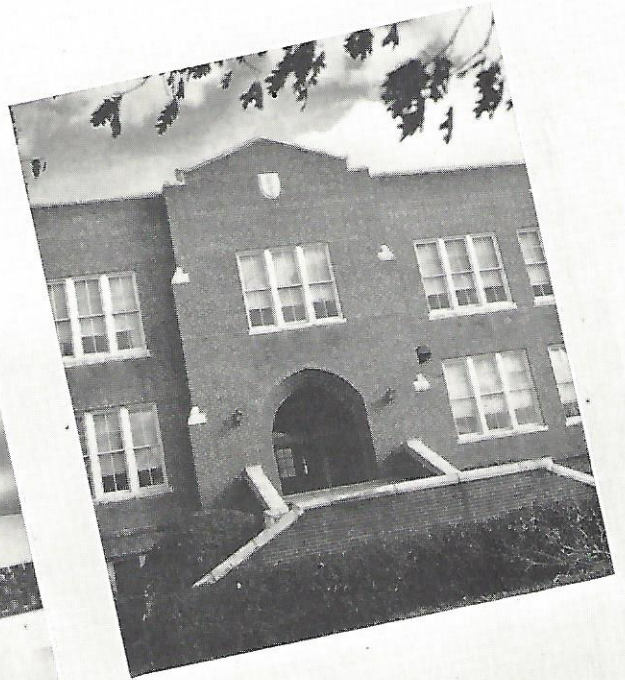
HAROLD K. WARD
 WOFFORD COLLEGE, M.A.
 GRADUATE WORK, UNIVERSITY OF NORTH CAROLINA
History

PAULINE BELL
 QUEENS COLLEGE, B.A.
Bible

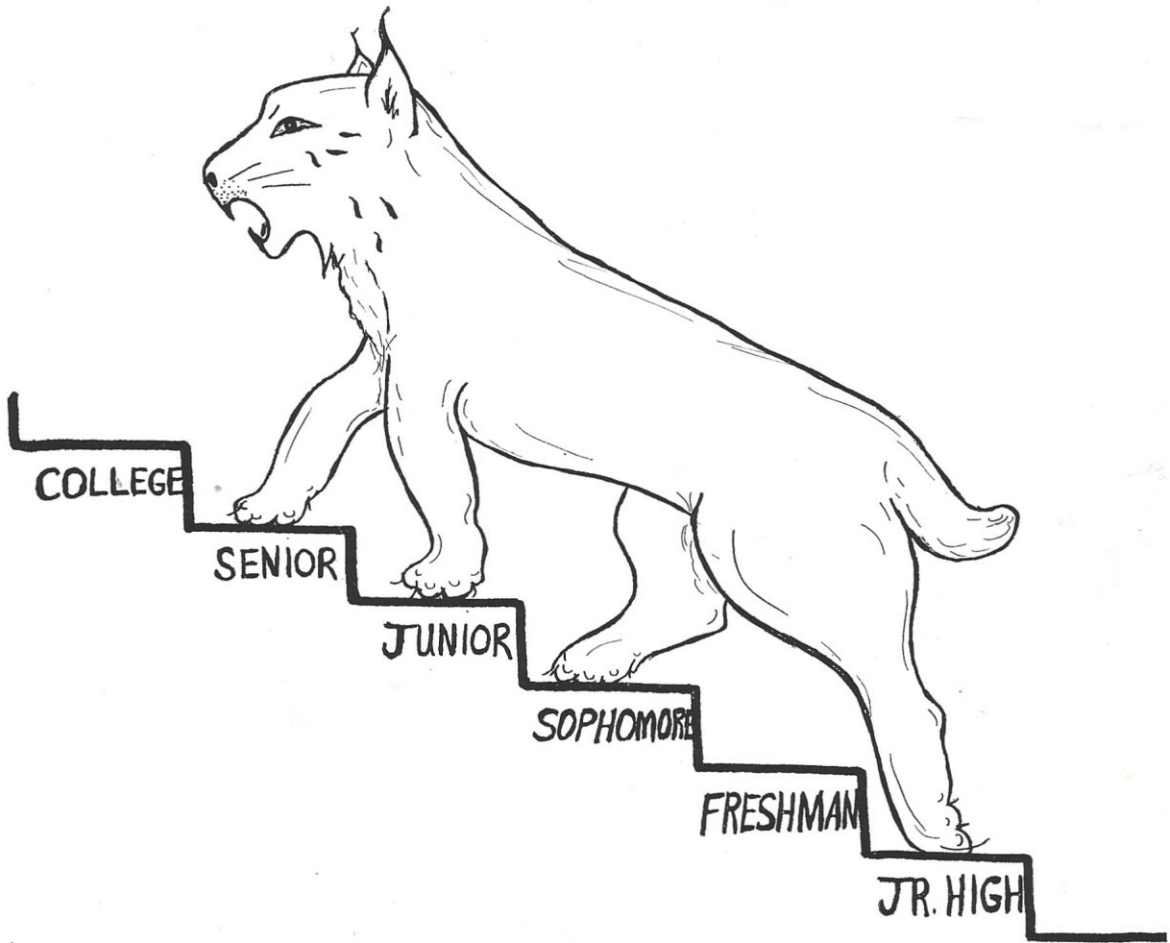
D. S. HENDERSON
 GEORGIA TECH
Electric Shop

MARY ALICE WILLIAMS
Secretary

Hail, Hail To Thee

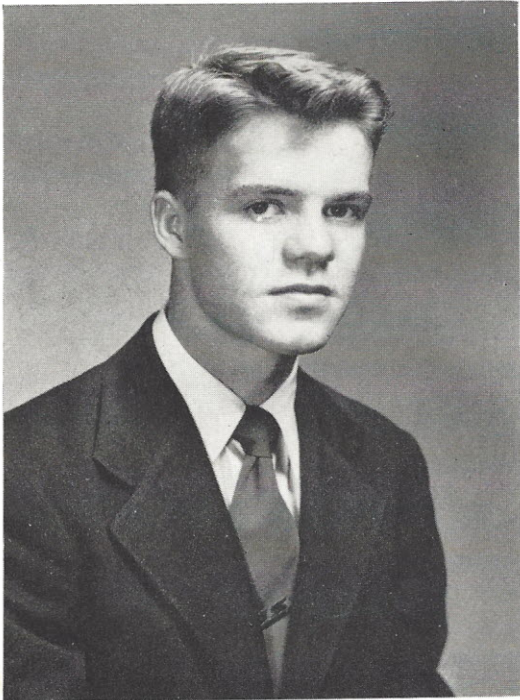


Our Alma Mater



CLASSES

SENIOR CLASS OFFICERS



JOE STEPHENSON

JOE STEPHENSON *President*

HOWARD COLLINS *Vice-President*

JELELIE NORMAN *Secretary*

PATSY WATERS *Treasurer*



HOWARD COLLINS, PATSY WATERS, JELELIE NORMAN, JOE STEPHENSON

SENIORS

ATKINSON, BARBARA CAROL "BOB"
 Science Club 1; Math Club 1; Glee Club 4; J. H. A. 1.

BAGGOTT, ELEANOR GLENN
 J. H. A. 2; Latin Club 1; Band 2; Glee Club 4; Drama Club 4.

BECKHAM, ALVA "BECK"
 J. H. A. 1, 2, President 1; Speech Club 2; Glee Club 1, 2, 3, 4, Vice-President 1; Cheerleader 2, 3, Head Cheerleader 3; Majorette 3, 4; Drama Club 4; Class Play 2, 3; Distributive Education Club President 4; *Campus Comments* Reporter 2; "Friendliest" 4; Harvest Queen 4; "Miss Senior" 4.

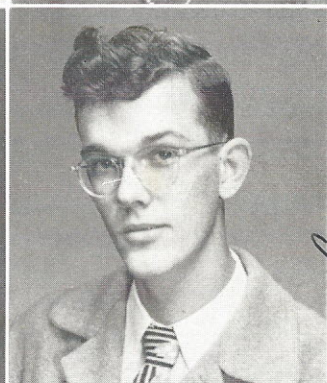
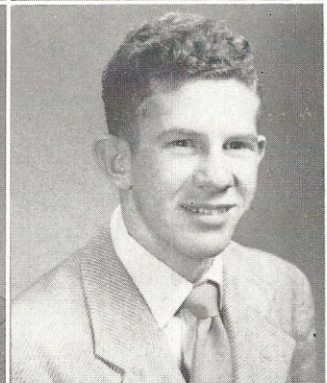
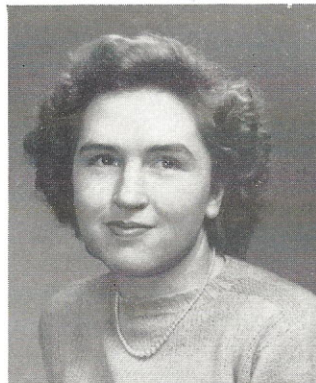
BRANHAM, THOMAS JEROME "RED"
 Football 2, 3, 4; Basketball 1, 2, 3, 4; Baseball 2, 3, 4; Glee Club 2, 3; Band 2, 3, 4; *Campus Comments* Sports Editor 4; Distributive Education Club 4, Vice-President 4; "Wittiest" 4.

BROOME, FRANCES RUBY
 J. H. A. 1, 2; Drama Club 4.

BRICE, BETTIE ANN
 J. H. A. 1, 2, 4; Glee Club 4; Drama Club 4.

BROWN, PATTY SUE "PATSY"
 J. H. A. 1, 2; Basketball 1; Glee Club 4; Drama Club 4; Class Play 2.

CAMERON, SPENCER MALLOY
 Football 1, 2; Science Club 1; French Club 3.



*BOB of Lunch
 to my favorite teacher...
 Malloy Cameron*

SENIORS

*Best of luck
Always & never
Have enjoyed being in
your Business Math class.
Love
Catharine*



CATHCART, MARGARET ANNE
Basketball 1, 2; J. H. A. 1, 2; Glee Club 1, 4; Drama
Club 4.



CATHCART, CATHERINE GREER "CAT"
J. H. A. 1; Basketball 1, 2; Glee Club 1.

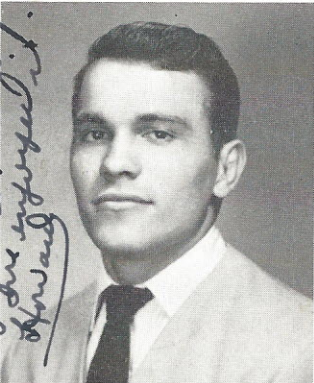


COGDILL, BETTY AUBREY
J. H. A. 1, 4; Drama Club 4; Glee Club 4; Science
Club 1; Math Club 1.

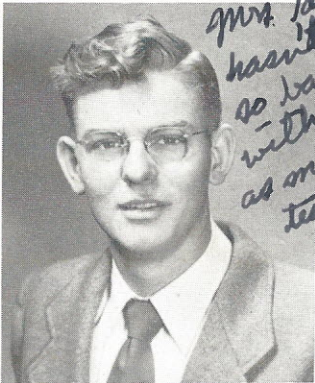


COLEMAN, PATRICIA LUENA "PAT"
Latin Club 1; J. H. A. 2; Band 1, 2, 3; Glee Club
2, 3, 4; Drama Club 4; Cheerleader 1; Basketball
1, 2, 4.

*I don't think she ever
had a teacher as good
as you are.
I've enjoyed it.
Howard*



COLLINS, HOWARD ROCKWELL
Class Treasurer 2; Football 1, 2, 3, 4, Captain 4;
Glee Club 3; Math Club 2; Vice-President of Class
4; Secretary and Treasurer of Distributive Education
Club 4.



*Mrs. Taylor, school
hasn't been
so good
with you
as my
teacher.
Willson*

COLLINS, JAMES WILBUR
Distributive Education Club 4.



CRECELIUS, JOAN NELSON
Latin Club 1; Math Club 1, 2, 3, 4; Beta Club 3, 4;
TUSITALA Staff, Art Editor 4, Assistant Art Editor 3;
Campus Comments Art Editor 4; Basketball 4; "Most
Talented" 4; Harvest Queen 3.



CROXTON, ANNIE MAE "MAE"
Basketball 1, 2, 3, 4; Glee Club 4; Drama Club 4;
Science Club 1; Math Club 1.

DOUGLAS, LEONARD

“HEAD”

Beta Club 3, 4; French Club 3, 4; TUSITALA Business Manager 4; Drama Club 4; Class Play 3; State Mental Contest 3; Future Teachers Club 4; “Most Dependable” 4.

DRAWDY, BEVERLY

“BECKY”

Glee Club 4; Drama Club 4.

ENLOE, THOMAS CHESLEY

“CHENA”

Football Manager 2.

FOWLER, SARA FRANCES

“SIS”

J. H. A. 1; Glee Club 4; Drama Club 4; Science Club 1; Math Club 1.

GARTMAN, JANETTE EVON

Math Club 2; Class Play 2, 3; Glee Club 4; Drama Club 4.

GOUDELOCK, DANIAL STEVENSON

“PUNEY”

Glee Club 2, 3, 4, President 2; Quartet 2, 3; Band 1, 2, 3, 4; “Volunteers” 2, 3, 4; French Club 3, 4, Treasurer 4; Latin Club 1; Science Club, President 1; Beta Club 3, 4, Treasurer 4; Student Council, Vice-President 2; Class Treasurer 2, Class Vice-President 3; Football 2, 3, 4, Captain 4; TUSITALA Staff, Assistant Sports Editor 3; Class Play 2, 3; State Mental Contest 1, 2, 3; Speech Club 1; Marshal 3; “Best All-Round” 4; Future Teachers Club 4; Drama Club President 4; Horse Bowl, Most Valuable Player 4.

GROOMS, BILLIE JEAN

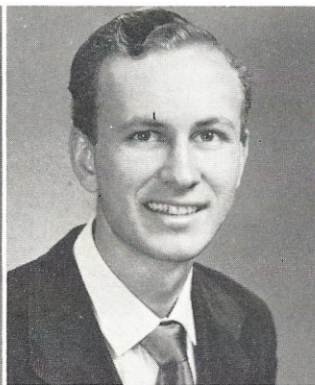
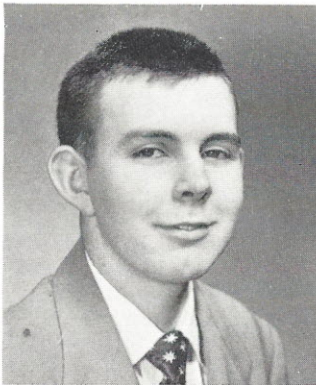
“BILLIE”

Glee Club 4; Drama Club 4; Distributive Education Club 4.

HEUSTESS, MARY LORETTA

“RETTA”

Basketball 2; Glee Club 1, 4; Latin Club 1; Math Club 1, 2, 3, Vice-President 3; French Club 3, 4; Future Teachers Club 3, 4, Vice-President 3, President 4; Beta Club 3, 4, Vice-President 4; Band 2, 3, 4; “Volunteers” 2, 3, 4; Class Play 2, 3; Marshal 3; State Mental Contest 1, 2; *Campus Comments*, Club News Editor 4; “Palmetto Girls’ State 1949”; TUSITALA Staff 3, 4, Assistant Literary Editor 3, Editor-in-Chief 4; “Best All-Round” 4.



*The very best a
luck to me by
the nicest person
I have ever
known. I have
enjoyed being student
of by your student
and will always remember
you.
Billie Jean*

SENIORS



HICKERSON, MAVIS

"IKE"

Basketball 2; Glee Club 4; Drama Club 4.

HICKS, VIRGINIA DARE

"JENNY"

J. H. A. 4; French Club 4; Drama Club 4; Basketball 2.



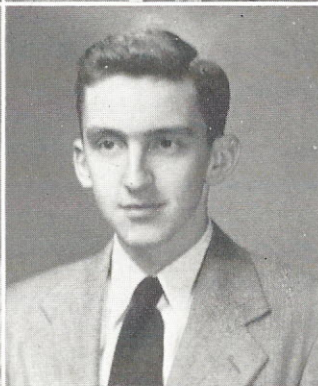
HOLSONBACK, MILDRED

"BOOTS"

Basketball 1, 2, 3, 4, Captain 3, 4; Majorette 3, 4; *Campus Comments* Sports Editor 4; Glee Club 1, 2, 3; Band 3; Latin Club 1; "Most Athletic" 4.

HOOD, JOHN, JR.

Transferred from Ridgeway High School.



JEFFERS, ALVIN, JR.

"SAM"

Distributive Education Club 4; "Friendliest" 4.

JORDAN, EDWARD POLLOCK

"POOKY"

Football 2, 3, 4; Basketball 2, 4; Baseball 2, 4; Beta Club 3, 4, President 4, State Vice-President 4; Glee Club 3; French Club 3, 4; Student Council 4; *Campus Comments* Reporter 4; Class Play 3, 4; Drama Club 4; State Mental Contest 3.



KELLY, JANE MARIE

"RISKI"

J. H. A. 1, 2; Glee Club 1, 4; French Club 3, 4, Secretary 4; Basketball 1; Math Club 3; Distributive Education Club 4; Assistant Photo Editor of TUSITALA 3, Photo Editor of TUSITALA 4; Drama Club 4.

MACKAY, MARGARET JACQUELINE

"JACKIE"

J. H. A. 1; Glee Club 4.

... I can really enjoy you teaching me, they do love to hear you in the years to come "Sam Jeffers"

MCGILL, CATHERINE ELIZABETH "CAT"

Latin Club 1; Math Club 1, 2, Vice-President 2; French Club 3, 4; Future Teachers Club 3; Student Council 2, Secretary 2; Beta Club 3, 4, Secretary 4; Band 3, 4; "Volunteers" 3, 4; Glee Club 3; J. H. A. 3; *Campus Comments* Editor-in-Chief 4; Class Play 2, 3; State Mental Contest 1, 2; Marshal 3; "Miss D. A. R." 4.

MILLER, NANCY JANE "NANNIE"

French Club 3, 4, Vice-President 4; Glee Club 1, 2, 3, 4; Sextette 1, 2; Octette 3; J. H. A. 1, 2; Drama Club 4; Class Play 2, 3; Latin Club 1; "Cutest" 4.

MOLNAR, GEORGE EUGENE "GENE"

Football 3, 4; Basketball 1, 2, 3, Captain 4; Baseball 2, 3, 4; French Club 3, 4; Latin Club 1; Glee Club 3, 4; Band 1, 2, 3, 4; Beta Club 3, 4; Class Play 2; Student Council 2, Treasurer 4; Drama Club 4.

MOSLEY, VENERIA "STEAMBOAT"

Cheerleader 2, 3; Distributive Education Club 4; Drama Club 4; Band 3.

NELSON, NADINE

Science Club 1; J. H. A. 1, 2, 4; Drama Club 4; Glee Club 4; *Campus Comments* Business Manager and Typist 4; Literary Editor of *TUSITALA* 4; Beta Club 3, 4; Future Teachers Club 4.

NORMAN, JELELIE

Latin Club 1; Science Club 1; French Club 3, 4; Band 1, 2, 3, 4; Glee Club 1, 3, 4; Octette 3; Basketball 1, 2; Drama Club 4; Math Club 1, 2; Beta Club 3, 4; Future Teachers Club 3, 4; Secretary of Class 4; Secretary and Treasurer of Class 3; "Most Dependable" 4.

O'CONNELL, MARGUERITE THERESA

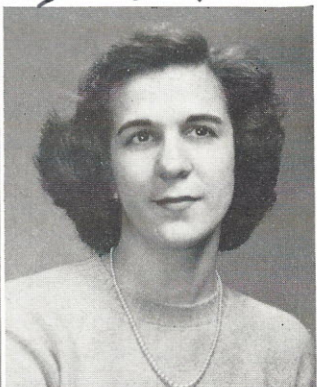
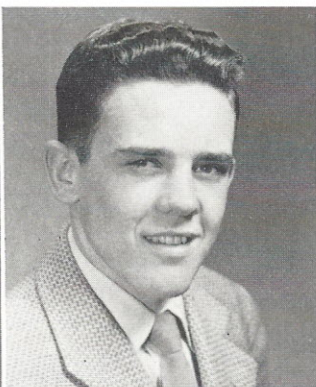
"MOE"

J. H. A. 1, 2; Glee Club 3, 4; Beta Club 3, 4; Drama Club 4; Student Council 1, Secretary 4; *Campus Comments* Typist 4; "Most Likely to Succeed" 4; Science Club 1; *TUSITALA* Typist 4.

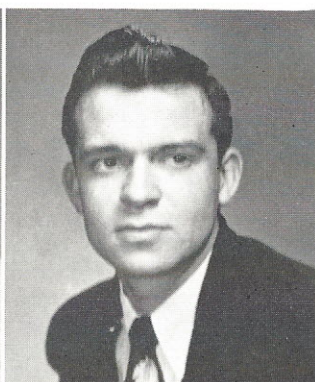
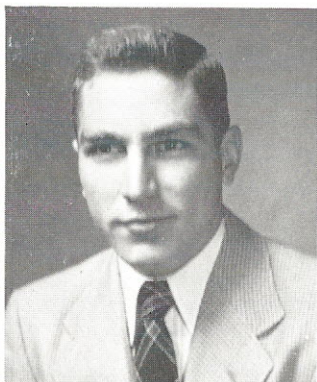
PEAVY, MARTHA MAE

J. H. A. 1; Drama Club 4.

*Mrs. Taylor,
I have enjoyed
being in your classes,
I will always
remember you
I love you, Veneria Mae*

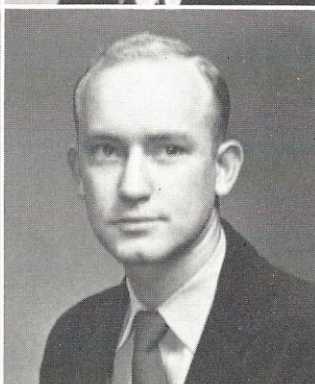
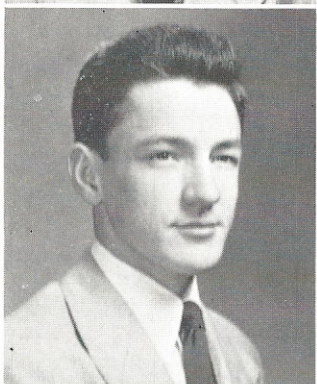


SENIORS



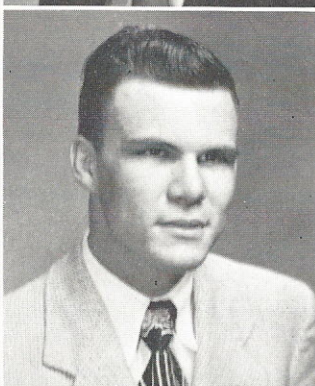
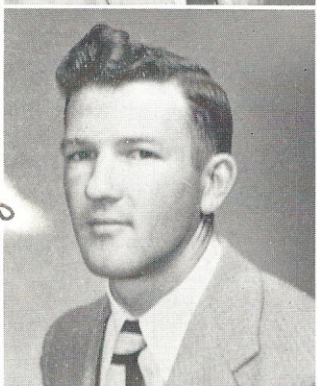
PRICE, HERMAN PRESTON "TEENY"
 Student Council Vice-President 3; State Mental Contest 3; Basketball 2, 3, 4, Captain 3; Baseball 2, 3, 4, Co-Captain 4; Football 4; Drama Club 4; Science Club 1.

REYNOLDS, BOBBY GENE
 Baseball 2, 3, 4.



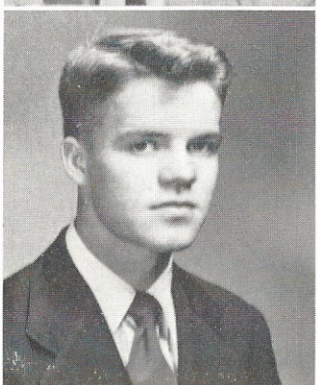
SHAW, JAMES LEAGON "BUD"
 Football Manager 3; Basketball 3, 4; Cheerleader 1, 4; Band 3, 4; Glee Club 3, 4; Student Council 1, 2, Treasurer 3; Beta Club 3; Class Play 3; Science Club 1; Future Teachers Club 4; Drama Club 4.

SIMS, WILLIAM CLAUDE "BILL"
 Football 2, 3, 4; Glee Club 3; Baseball 2, 3; F. F. A. Treasurer 4.



SIMS, GRADY CLARENCE "SHORTY"
 Distributive Education Club 4; Baseball Manager 3.

SMITH, MARION CURLETTE
 Football 1, 2, 3, 4; Glee Club 3, 4; French Club 3, 4; Math Club 4; Science Club 1.



STEPHENSON, JOE JOHN "LITTLE JOE"
 Latin Club 1; Band 2, 3, 4; Glee Club 2, 3; Football 4; Assistant Business Manager of TUSITALA 4; Circulation Manager of *Campus Comments* 4; "Volunteers" 2, 3, 4; Class Play 2; Student Council 4; Drama Club 4; Class President 4; "Boys' State 1949"; "Cutest" 4.

STEVENSON, ANNIE LAURA "PEE WEE"
 Latin Club 1; J. H. A. 2; Band 1, 2; Glee Club 3, 4; Drama Club 4; Basketball 2, 3, 4.

I have enjoyed being one of your students. Clarence

TANNER, CLEVELAND ODELL

French Club 3, 4; Science Club 1.

WATERS, PATSY RUTH

Math Club Secretary 1; Marshal 3; "Palmetto Girls' State 1949"; Glee Club 4; Drama Club 4.

TERRY, DOROTHY LEE

"DICK"

Campus Comments Reporter 3; Glee Club 4; Distributive Education Club 4; Drama Club 4.

TURNER, DOROTHY LA DELL

"Dot"

J. H. A. 1, 2; Drama Club 4; Distributive Education Club 4; Class Play 3; Campus Comments Reporter 4; Glee Club 4.

WATSON, DORIS FAYE

Glee Club 3, 4; Class Play 2, 3; Latin Club 1; Speech Club 2; Drama Club 4; Majorette 3, 4; Band 2; Science Club 1.

TURNER, JOHN

"JOHNNY"

Band 1, 2, 3, 4; Class Play 2, 3; Math Club 1, 2, 3, President 3; Latin Club 1; Glee Club 3; Student Council 1; State Mental Contest 3; Feature Editor of Campus Comments 4; Cheerleader 3, 4; Assistant Editor of TUSITALA 4; "Volunteers" 3, 4; "Most Likely to Succeed" 4; Basketball 4; Baseball 4; Science Club 1.

WELLS, GEORGE WILLIAM

Football 1, 2, 3, 4; Basketball 1, 3, 4; Student Council 3; Athletic Editor of TUSITALA 4; Baseball 2, 3, Co-Captain 4; President of Class 1; Math Club 1.

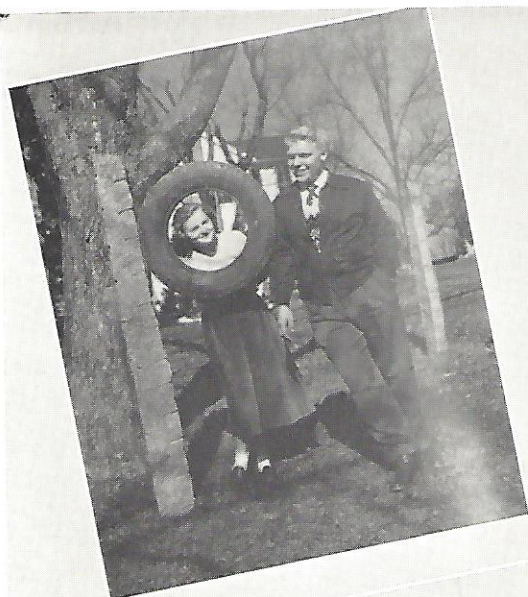
I am glad that you taught me W.E. Always, Dick



Senior

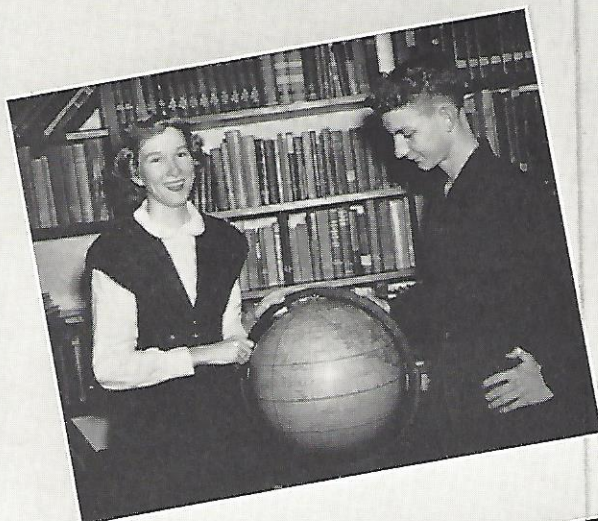
Best All-Round

STEVE GOUDELOCK, "RETTA" HEUSTESS



Most Likely to Succeed

JOHNNY TURNER, MARGUERITE O'CONNELL



Most Dependable

LEONARD DOUGLAS, JELELIE NORMAN

Most Talented

HOWARD COLLINS, JOAN CRECELIUS

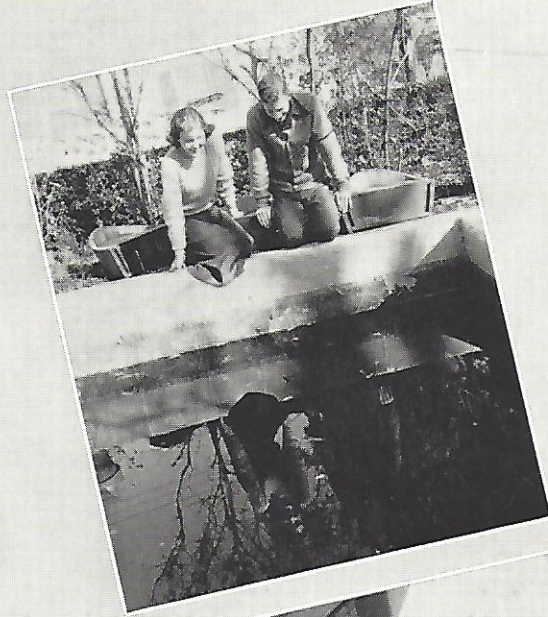
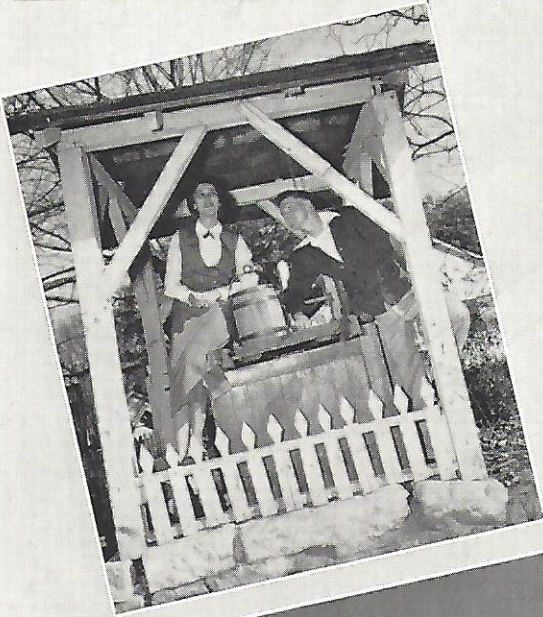
Superlatives

Cutest

JOE STEPHENSON, NANCY MILLER

Wittiest

JERRY BRANHAM, PATSY BROWN



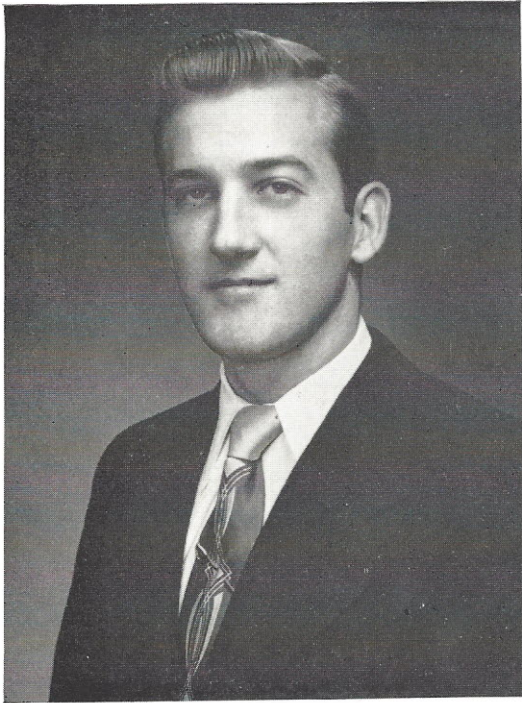
Most Athletic

GEORGE WELLS, "BOOTS" HOLSONBACK

Friendliest

SAM JEFFERS, ALVA BECKHAM

JUNIOR CLASS OFFICERS



HAROLD GOODWIN *President*

RAY COOPER *Vice-President*

MARY HELEN CHRISTIE *Secretary*

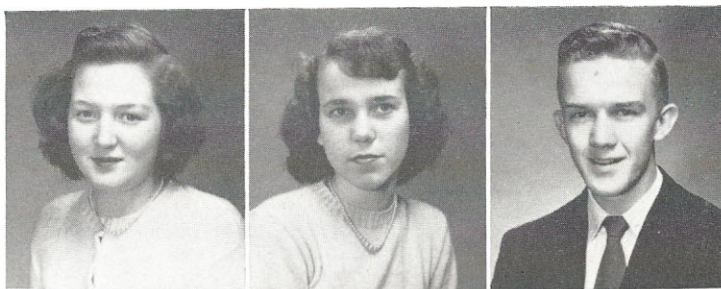
LORETTA MINCEY *Treasurer*

HAROLD GOODWIN, MARY HELEN CHRISTIE, LORETTA MINCEY, RAY COOPER.

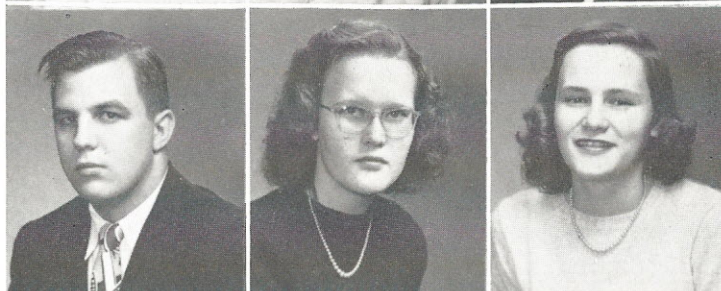


JUNIORS

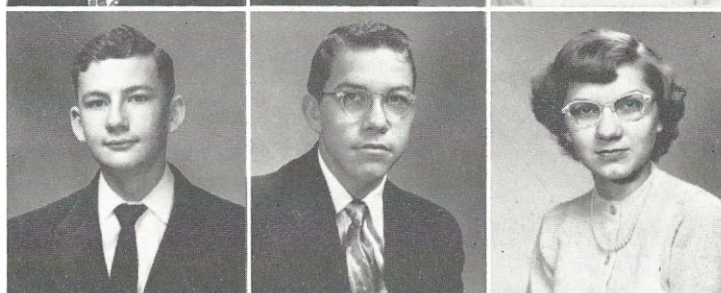
DORIS ADDISON
BLANCHE BARRS
LAVONNE BAZEMORE



CARROLL BOYD
JOHNNIE MAE CAMERON
MARY HELEN CHRISTIE



EDWIN CLARK
RAY COOPER
BETTY SUE DAVIS



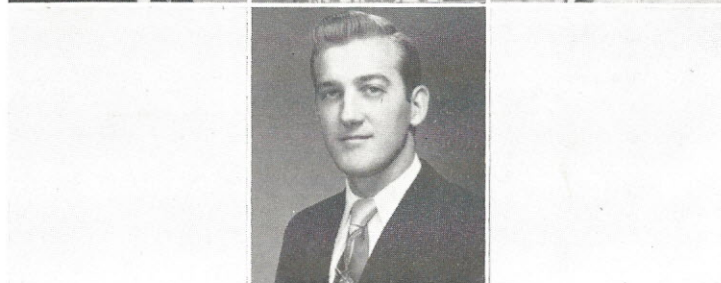
MYRTLE DEAN
JACQUELINE DOMINY
LOUISE DUNN



BERNIE ENLOE
PATSY FARTHING
ROBERT GAY

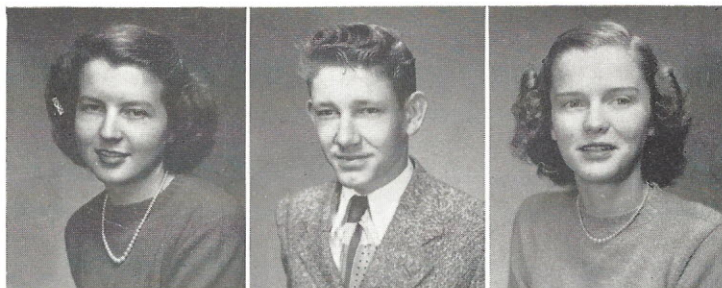


HAROLD GOODWIN

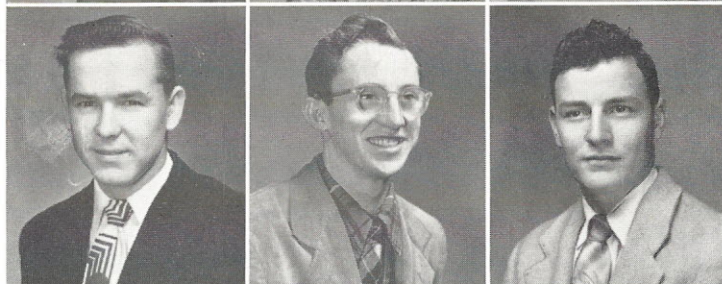


*Tomy best Math Teacher,
Wm Broome*

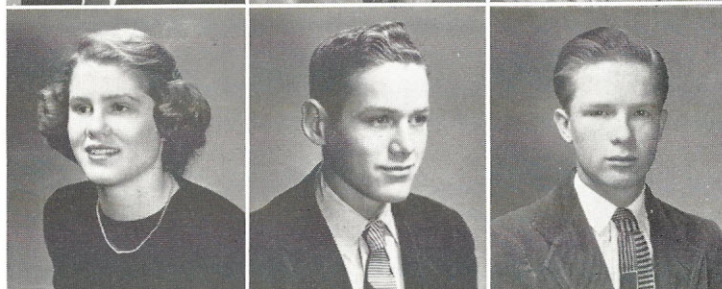
JUNIORS



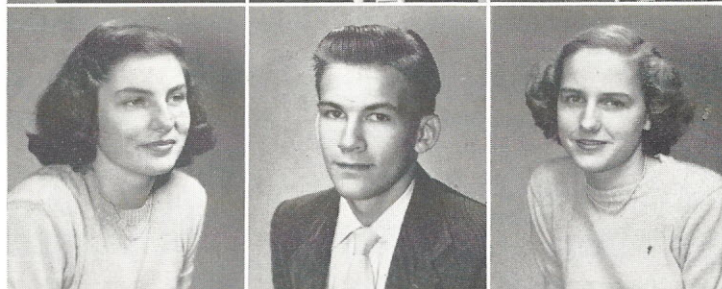
GLEND A HACKLE
HORACE HAYGOOD
BARBARA HOLLIS



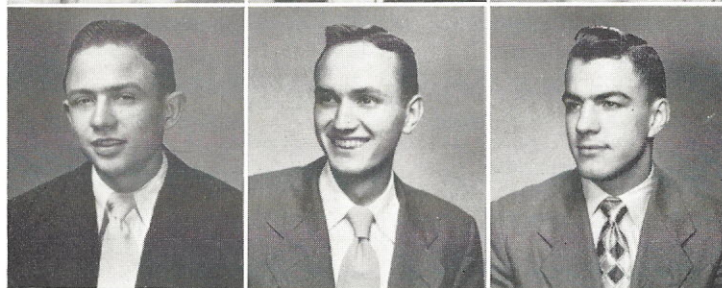
BILLY HUDSON
LARRY HUNT
BERNIE JEFFCOAT



MARION JENNINGS
MARVIN JENNINGS
BOBBY LUTZ



BETTY MACFIE
STOKES MARTIN
LORETTA MINCEY

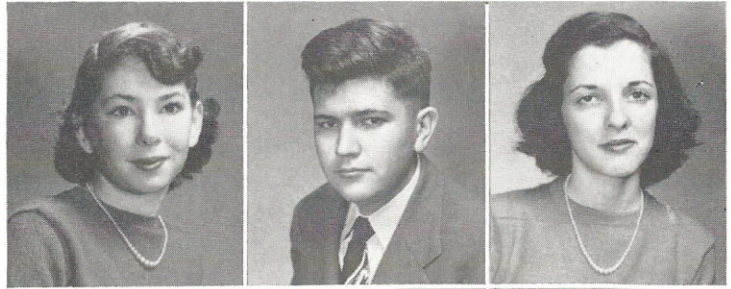


JIMMY MIXON
JASPER MORGAN
JOEL PATE

*To one fine teacher
Clyde*

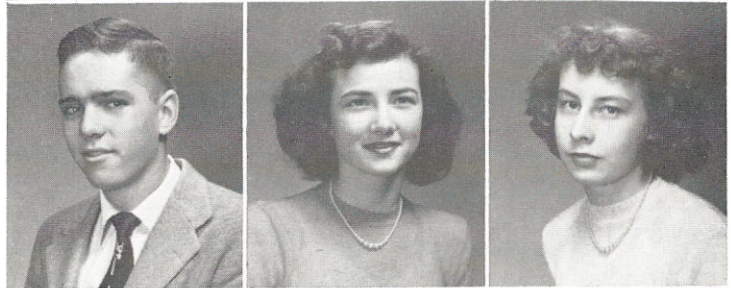
JUNIORS

MARY EVELYN PATRICK
FRED PORTER
HELEN POSTON



*The best of luck to a
very nice teacher.
"Oscar"*

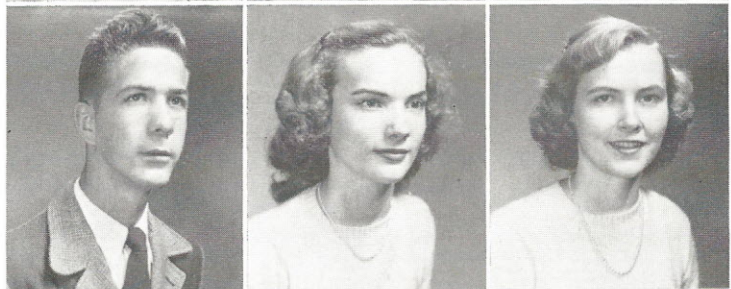
OLAN PULLEN
LOUISE RALEY
BARBARA JEAN REED



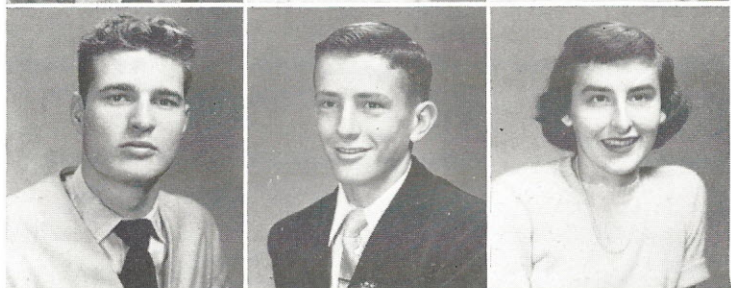
LENORA SENTERFEIT
DOVEREEN SHARPE
MAXINE SHAW



JAMES SMITH
ERNESTINE STEVENSON
MIRIAM STEVENSON

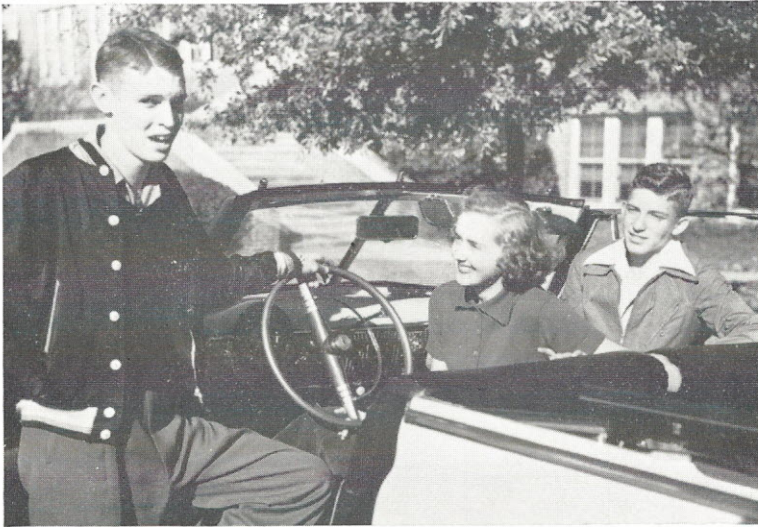


BOBBY TOLBERT
JERRY WALSH
JULIA ANN WILKES



SOPHOMORE

CLASS



ANDY TURNER, LUCY ANN ROBINSON, LEON HUNT.

ANDY TURNER *President*

LEON HUNT *Vice-President*

LUCY ANN ROBINSON *Secretary*

*I hope your next year students enjoy having you as their teacher as much as I have. I have enjoyed being in your class this year
Helen*



Sabie Cathcart, Morris Davenport, Jimmie Douglas, Franklin Edenfield, Pete Gustafson, "Rudy" Hall, Jack Hinson, "Rip" Lane, Joe Looper, Arthur Martin, Charles Randall, Tommy Ruff, "Sonny" Skipper, Junior Stevenson, Andy Turner, Mary Alice Crawford, Isabel Douglas, Jo Margaret Enloe, Gena Fant, Betty Jane Hall, May LeGrande, Peggy Mincey, "Gerry" Player, Mary Frances Pope, Dorothy Jane Sandifer, Helen Varnadore, Jeanette Watson, Joan Watson, Abbie Wilson, Frances Wilson, Joan Rutledge, Virginia Ruth Davis, Sara Bartley, Loretta Brinson, Colleen Dean, Annette Edenfield, Jean Farthing, Barbara McFadden, "Mazie" McMaster, Mary Ann Meng, Mary Miller, Lucy Ann Robinson, Claudette Sims, Ann Smarr, Carolyn Weed, Joan Welsh, Leon Brooks, George Dean, Lamar Edenfield, Jackie Gandy, Charles Gibson, Leon Hunt, "Jiggs" Jeffers, "Cotton" Lathan, Shelton Mincey, Bobby Pope, Wilbert Pullen, Jerry Reynolds, Charles Smith, Kenneth Tanner, Furman Walker.

FRESHMAN

CLASS

BOBBY STEPHENSON *President*

JIMMY MARTIN *Vice-President*

MARGARET McMASTER *Secretary*

MARY ELLA RALEY *Treasurer*

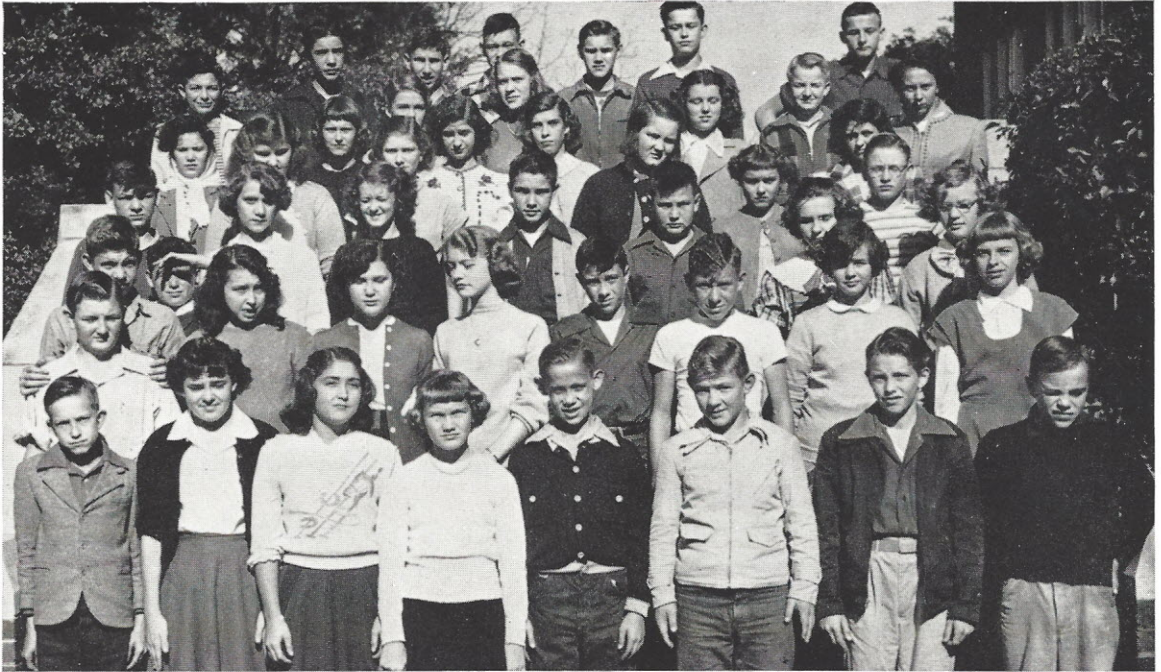


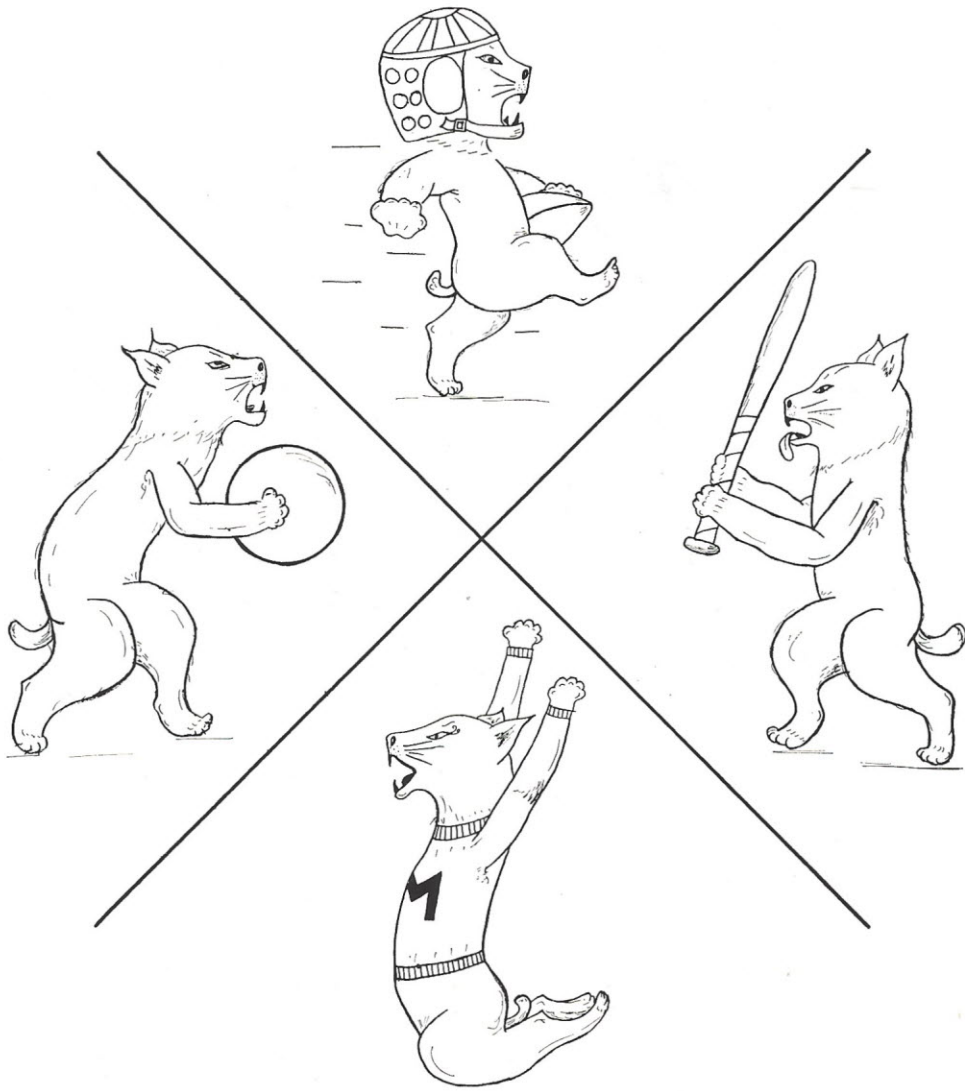
JIMMY MARTIN, MARY ELLA RALEY, BOBBY STEPHENSON,
MARGARET McMASTER.



Billy Ray Bryant, Leon Geddings, Jimmy Martin, Bobby Price, Bobby Stephenson, Larry Tolbert, Freddie Walsh, Charles Whitman, Bobbie Nell Banks, Willie Mae Bonds, Shirley Ann Branham, Melba Carey, Cathryn Cathcart, Margaret Coleman, Susanne Crawford, Merrill Jennings, Alice Plyler, Theresa Plyler, Barbara Robinson, Verna Rutland, Dorothy Shaw, Barbara Stames, Grace Taylor, Clara Truesdale, Jo Ellen Truluck, Mary Faye Young, Jerry Armstrong, Raymond Brown, Harold Geddings, Jimmy Haynes, Billy Melton, A. C. Reed, Revon Tanner, Nell Branham, Barbara Christie, Geraldine Collins, Betty Emerson, Anne Macfie, Katherine Martin, Martha McDonald, Esther Powers, Jackie Robinson, Virginia Sharpe, Mary Ann Snowden, Shirley Sykes, Ruth Timms, Anne Turner, Jackie Branham, Mark Doty, Howard Hinson, Harold McGinnis, Leon Park, Charles Price, Lawton Smith, Jewel Faye Bennett, Evelyn Buchanan, Mary Lee Carter, "Boots" Coker, Betty Dixon, Sylvia Estes, Minnie Gladden, Margaret McMaster, Annette Proctor, Sarah Quattlebaum, Mary Ella Raley, Marliese Robinson, Mary Anne Sims, Freda Stames, Claudie Thomas, Georgie Mae Walling, Jean Waters, Joann Watts.

SUB-FRESHMEN





SPORTS

Cheerleaders

FIRST SEMESTER

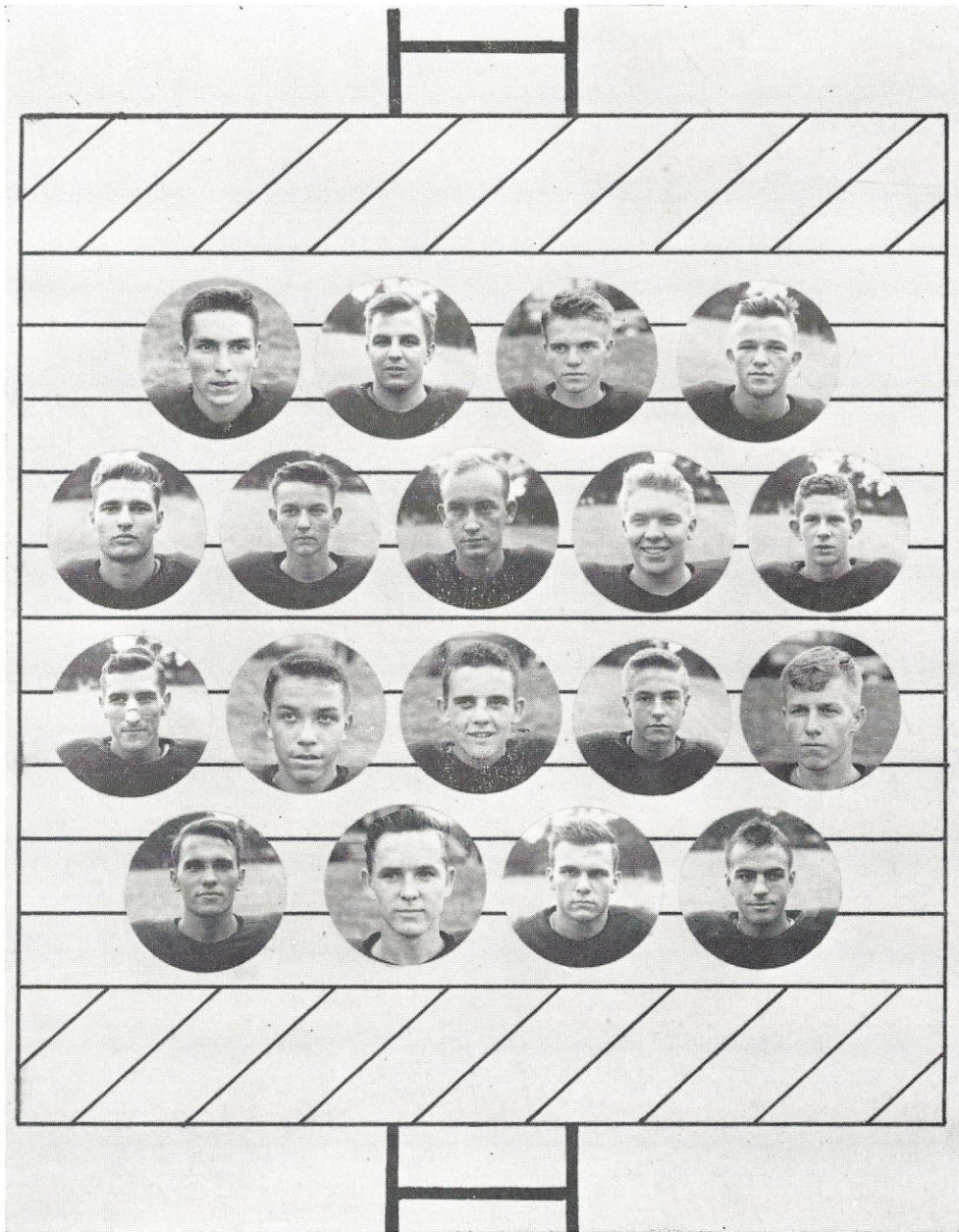
JOAN WATSON, *Head Cheerleader*; "BUD" SHAW, MARY ELLA RALEY, JOHNNY TURNER, JEANETTE WATSON.



SECOND SEMESTER

MAZIE McMASTER, PATSY FARTHING, WILLIAM POPE, MIRIAM STEVENSON, *Head Cheerleader*; NANCY MILLER.

Starters



Herman Price, *Center*; Carroll Boyd, *Guard*; Joe Stephenson, *Back*; "Rudy" Hall, *Back*; Bobby Tolbert, *Guard*; Larry Tolbert, *Back*; Billy Sims, *Tackle*; Steve Goudelock, *Tackle*; Jerry Branham, *End*; George Wells, *Back*; Ray Cooper, *Back*; Gene Molnar, *Tackle*; "Rip" Lane, *Back*; "Cotton" Lathan, *Back*; Howard Collins, *End*; Billy Hudson, *End*; Marion Smith, *Guard*; Joel Pate, *Back*.



W. R. PRICE
Coach

J. T. HARRISON
Assistant Coach

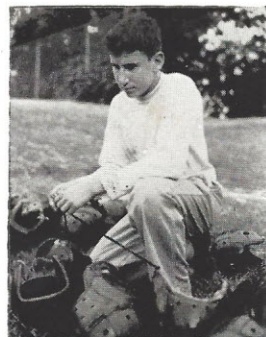


Football Scores

M. Z. I. . . . 28	HARTSVILLE . . . 6
M. Z. I. . . . 27	B.-C. . . . 14
M. Z. I. . . . 6	DREHER . . . 14
M. Z. I. . . . 7	OLYMPIA . . . 14
M. Z. I. . . . 6	UNION 0
M. Z. I. . . . 18	CLOVER 19
M. Z. I. . . . 39	YORK 14
M. Z. I. . . . 6	BEAUFORT . . . 6
M. Z. I. . . . 19	LANCASTER . . 12
M. Z. I. . . . 6	CHESTER 48

W. R. Price, Ed Jordan, George Wells, Herman Price, Leon Hunt, Joel Pate, "Rip" Lane, Bernie Jeffcoat, "Cotton" Lathan, Jerry Walsh, Joe Stephenson, Robert Gay, Billy Sims, "Rudy" Hall, Arthur Martin, Jasper Morgan, Edwin Clark, Larry Hunt, Junior Stevenson, Charles Gibson, Jiggs Jeffers, Jack Hinson, Billy Price.

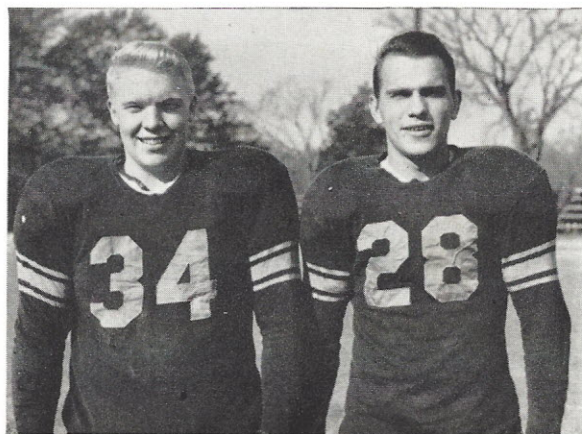
BALL



"MUSH" LEVY
Manager



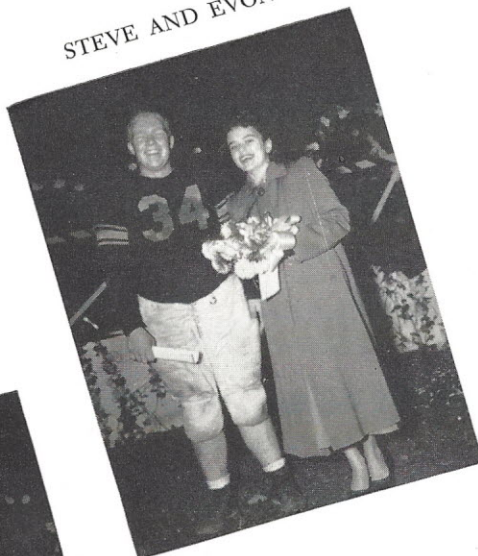
STEVE GOUDELICK, HOWARD COLLINS
Co-Captains



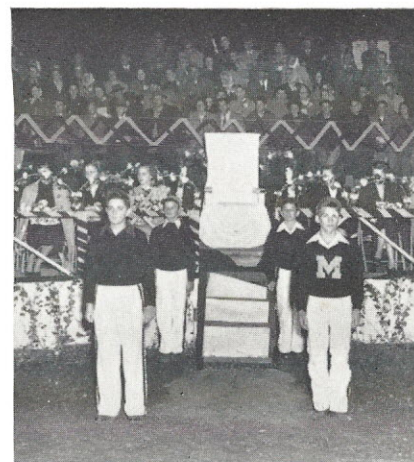
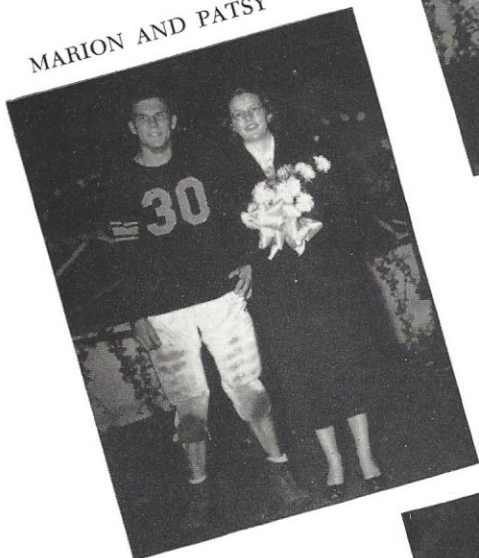
Steve Goudelock, Howard Collins, Billy Hudson, Bobby Price, Bobby Tolbert, J. T. Harrison, Marion Smith, Larry Tolbert, "Red" Branham, Gene Molnar, Carroll Boyd, Jackie Gandy, George Dean, Billy Ross, Leon Geddings, Bobby Pope, Fred Porter, Andy Turner, Leon Brooks.

HOME

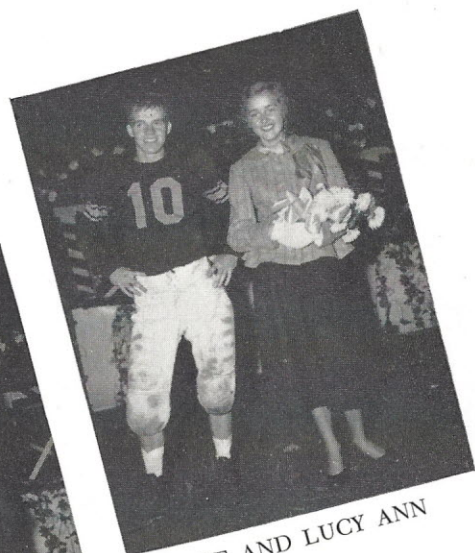
STEVE AND EVON



MARION AND PATSY



QUEEN'S THRONE



JOE AND LUCY ANN



ED AND MARY HELEN

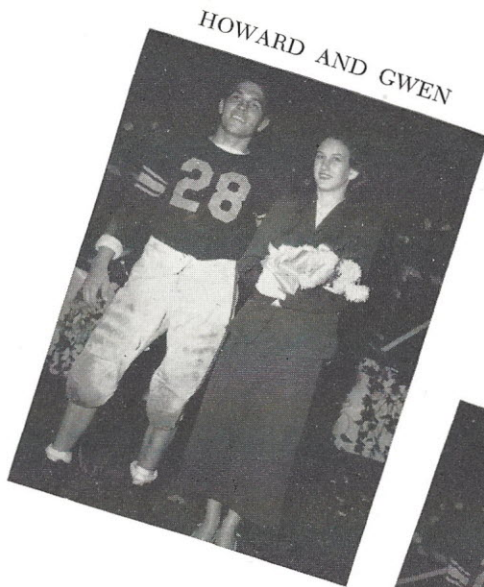


MR. AND MRS. HARRISON

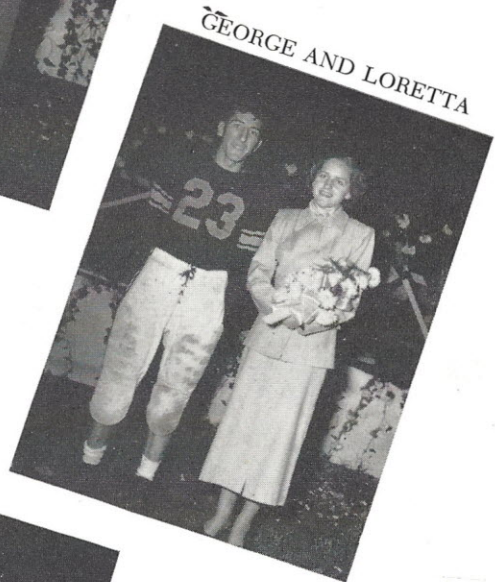
COMING



QUEEN ANNIE LAURA



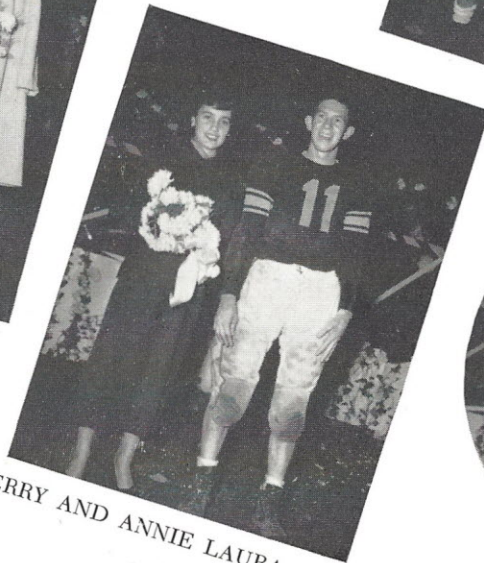
HOWARD AND GWEN



GEORGE AND LORETTA



MR. AND MRS. PRICE

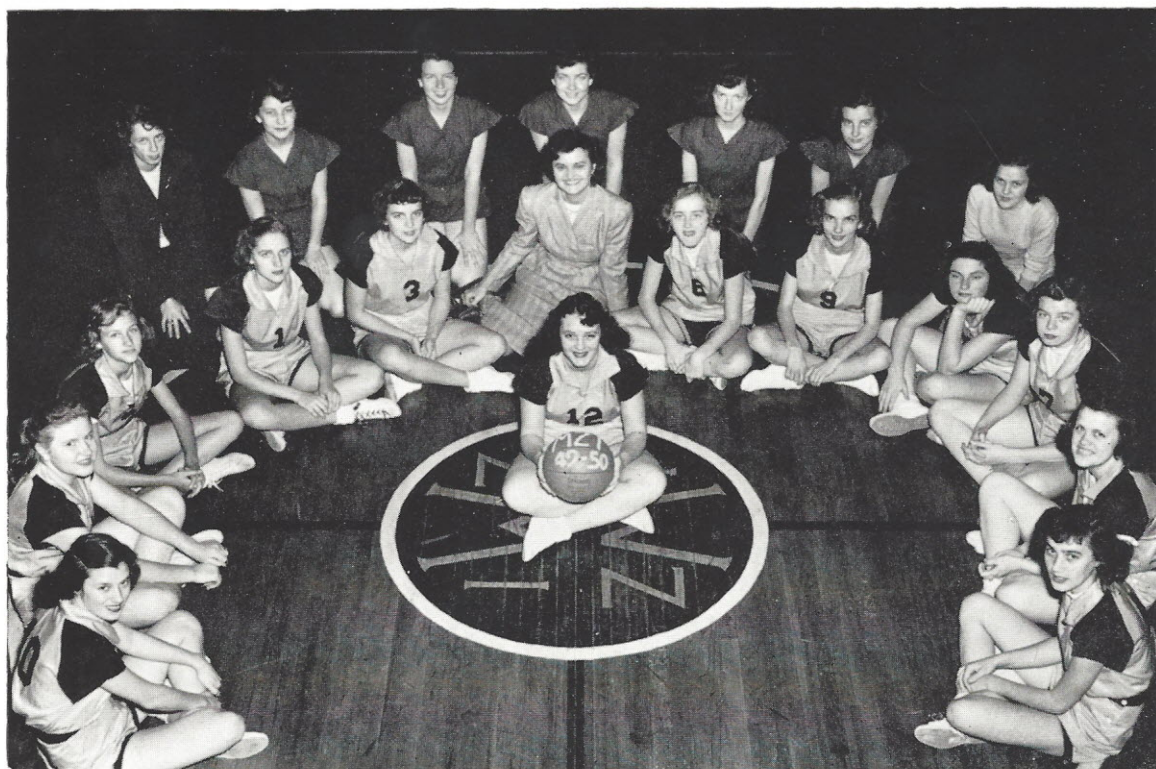


JERRY AND ANNIE LAURA



BILL AND JACKIE

BASKETBALL



"Mickey" Shaw, F.; Annie Mae Croxton, G.; Peggy Mincey, F.; Loretta Mincey, F.; Dorothy Jane Sandifer, G.; Miss Maner, *Coach*; Lucy Ann Robinson, F.; "Tina" Stevenson, G.; Betty Macfie, G.; Susanne Crawford, F.; "Pat" Coleman, G.; Annie Laura Stevenson, F.; "Boots" Holsonback, *Captain*. *Second Row*: Mary Alice Crawford, *Manager*; Virginia Ruth Davis, Glenda Hackle, Mary Ella Raley, Georgie Mae Willing, Willie Mae Bonds, Joan Watson.



MARY ALICE CRAWFORD, *Manager*
MISS MANER, *Coach*
"BOOTS" HOLSONBACK, *Captain*

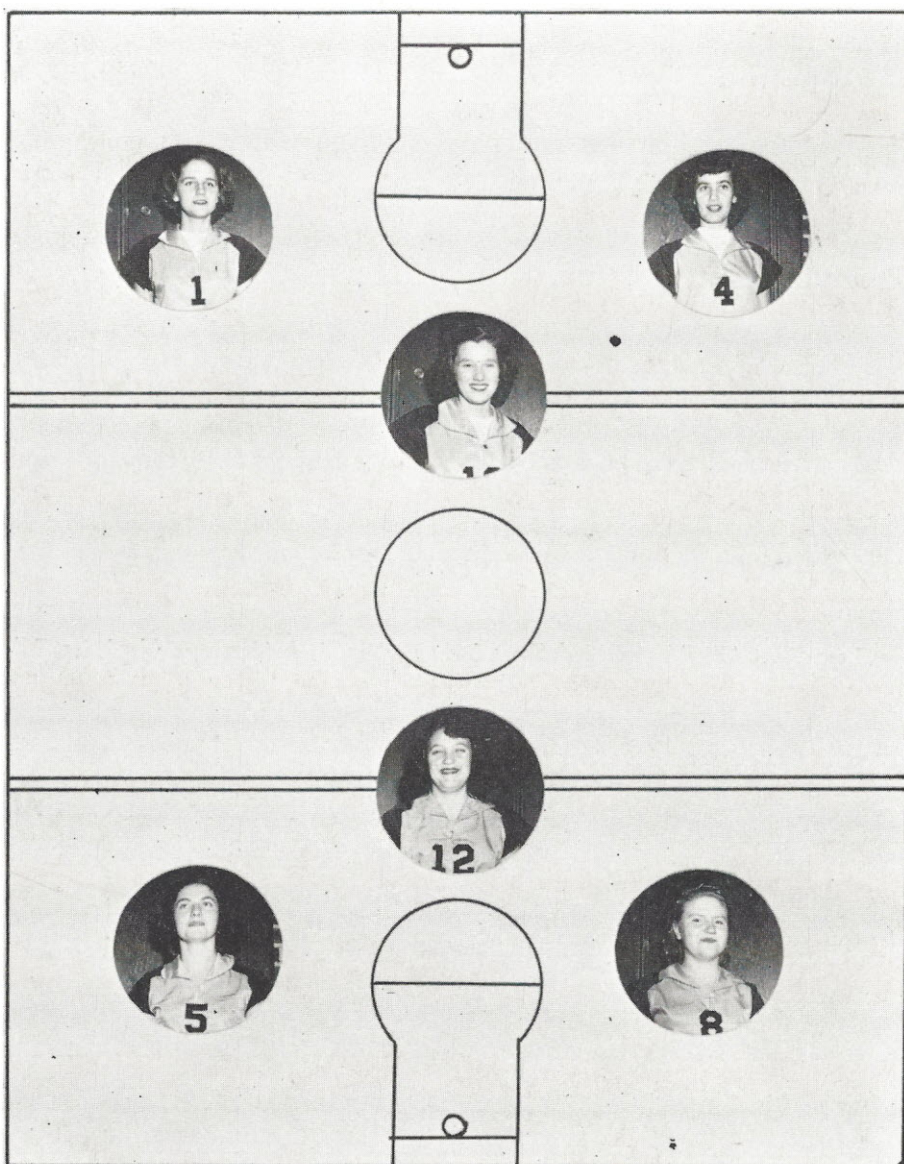
GIRLS' BASKETBALL RESULTS

Mt. Zion . . .	36	Jenkinsville . . .	43
Mt. Zion . . .	48	Newberry . . .	31
Mt. Zion . . .	28	Eau Claire . . .	14
Mt. Zion . . .	40	Jenkinsville . . .	38
Mt. Zion . . .	21	Camden . . .	46
Mt. Zion . . .	37	B.-C. . .	34
Mt. Zion . . .	28	Lancaster . . .	46
Mt. Zion . . .	26	University H. . .	40
Mt. Zion . . .	31	Camden . . .	52
Mt. Zion . . .	29	Newberry . . .	24
Mt. Zion . . .	34	Olympia . . .	30
Mt. Zion . . .	37	Chester . . .	15
Mt. Zion . . .	34	B.-C. . .	42
Mt. Zion . . .	31	Chester . . .	23
Mt. Zion . . .	38	Eau Claire . . .	18
Mt. Zion . . .	26	Olympia . . .	35
Mt. Zion . . .	26	Lancaster . . .	41

TOURNAMENT

Mt. Zion . . .	30	Chester . . .	22
Mt. Zion . . .	39	York . . .	52
Won 10—Lost 9			

Starters



"MICKEY" SHAW
Forward

LORETTA MINCEY
Forward

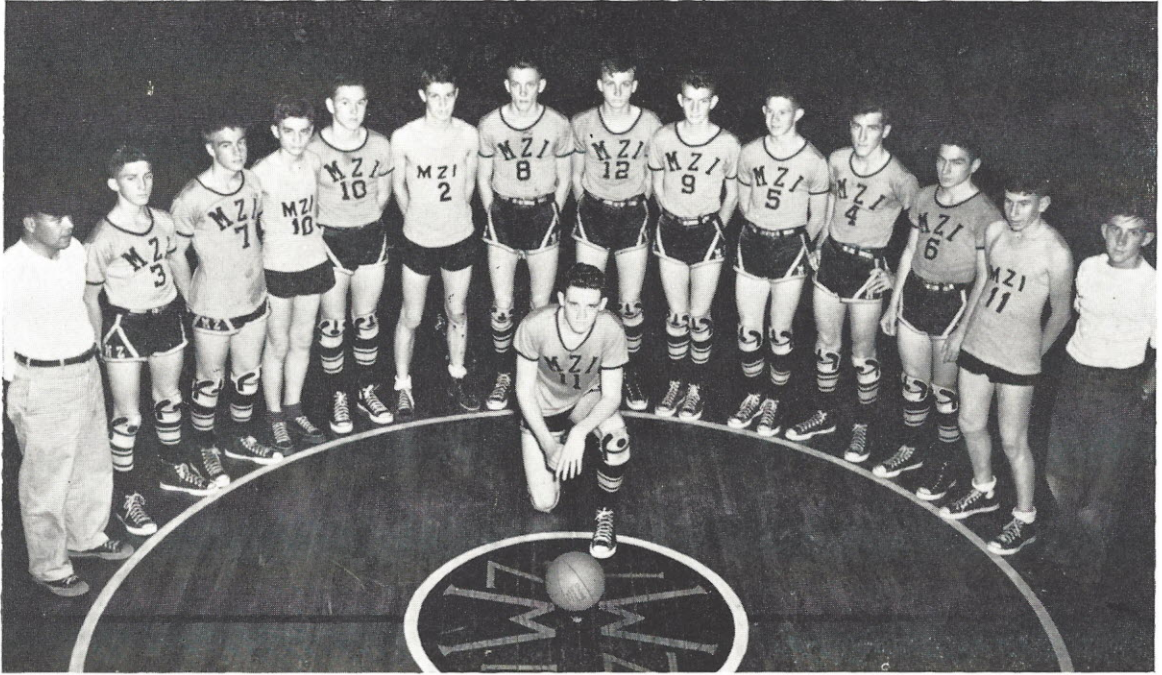
ANNIE L. STEVENSON
Forward

"BOOTS" HOLSONBACK
Guard

BETTY MACFIE
Guard

ANNIE M. CROXTON
Guard

BASKETBALL



Coach Harrison, Leon Hunt, "Rip" Lane, Mark Doty, Billy Hudson, Andy Turner, Bobby Price, Billy Price, Gene Molnar, *Captain*; Johnny Turner, "Red" Branham, George Wells, Herman Price, "Mush" Levy, "Sonny" Skipper, *Manager*.



Coach HARRISON
GENE MOLNAR
Captain

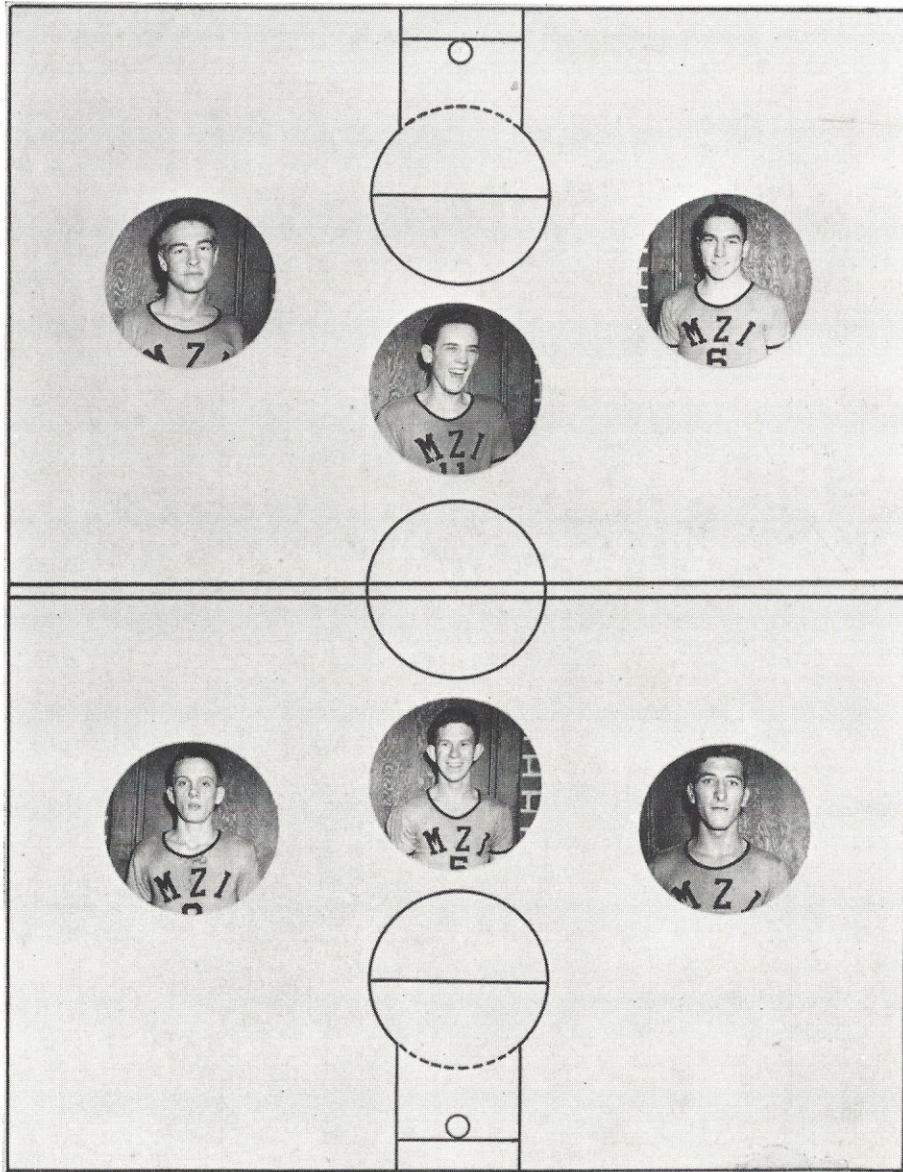
BOYS' BASKETBALL RESULTS

Mt. Zion . . . 35	Jenkinsville . . . 35
Mt. Zion . . . 46	Newberry . . . 44
Mt. Zion . . . 40	Dreher . . . 35
Mt. Zion . . . 37	Eau Claire . . . 18
Mt. Zion . . . 44	Jenkinsville . . . 17
Mt. Zion . . . 51	Camden . . . 38
Mt. Zion . . . 46	B.-C. . . . 13
Mt. Zion . . . 35	Lancaster . . . 43
Mt. Zion . . . 45	University H. . . 50
Mt. Zion . . . 63	Camden . . . 53
Mt. Zion . . . 63	Newberry . . . 47
Mt. Zion . . . 50	Olympia . . . 31
Mt. Zion . . . 62	Chester . . . 28
Mt. Zion . . . 63	B.-C. . . . 45
Mt. Zion . . . 31	Chester . . . 18
Mt. Zion . . . 46	Eau Claire . . . 18
Mt. Zion . . . 28	Olympia . . . 36
Mt. Zion . . . 49	Columbia High . . 40
Mt. Zion . . . 33	Lancaster . . . 51
Mt. Zion . . . 45	Dreher . . . 41
Mt. Zion . . . 50	University H. . . 49
Mt. Zion . . . 66	Fairfield Co. All-Stars 37

TOURNAMENT

Mt. Zion . . . 53	Clover 37
Mt. Zion . . . 27	Lancaster . . . 45
Total . . . 1,098	869
Won 18—Lost 6	

Starters



GENE MOLNAR
Center

"RIP" LANE
Forward

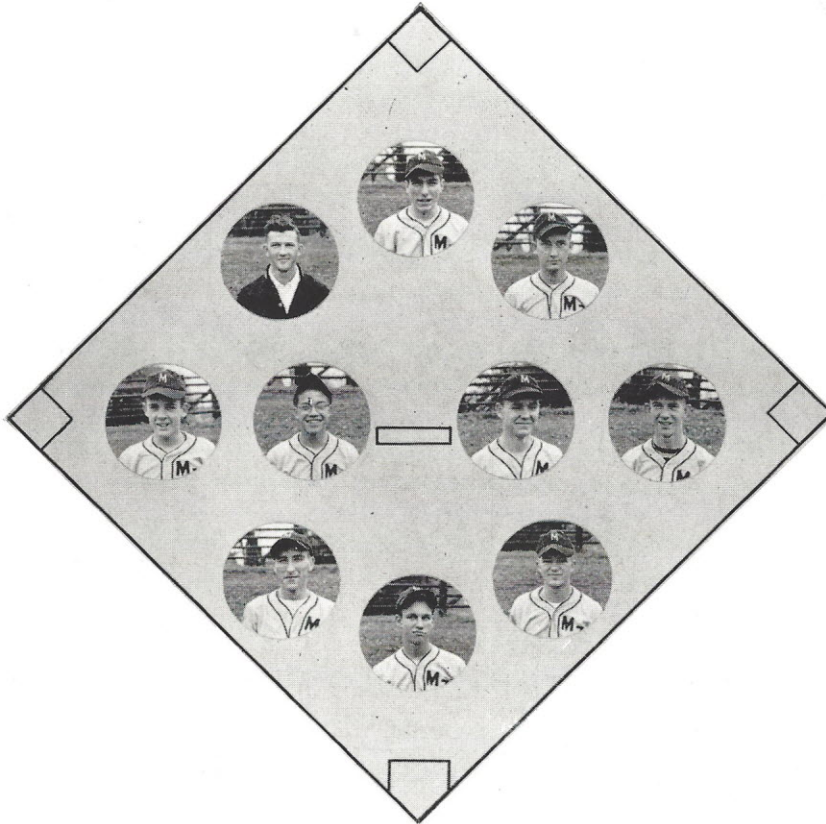
HERMAN PRICE
Forward

"RED" BRANHAM
Forward

BOBBY PRICE
Guard

GEORGE WELLS
Guard

BASEBALL



"Shorty" Sims, *Manager*

Herman Price, C

Billy Sims, OF

Gene Molnar, FB

Ray Cooper, SB

Billy Hudson, OF

"Red" Branham, OF

George Wells, IF

Harold Geddings, P

"Rudy" Hall, C

Absent from Picture:

Jack Herndon, TB

Gene Pate, SB

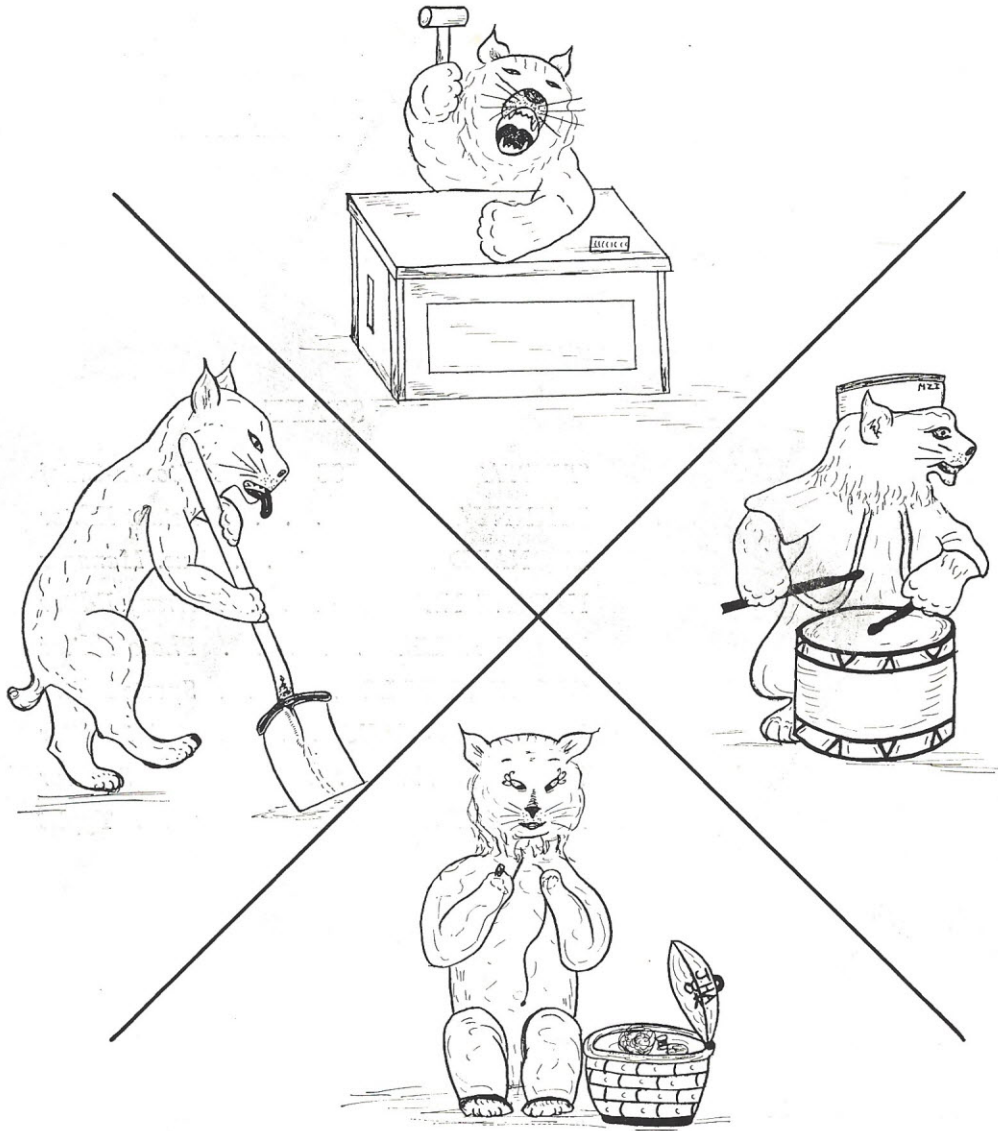
Bobby Gene Reynolds, OF

Revonne Hunt, OF

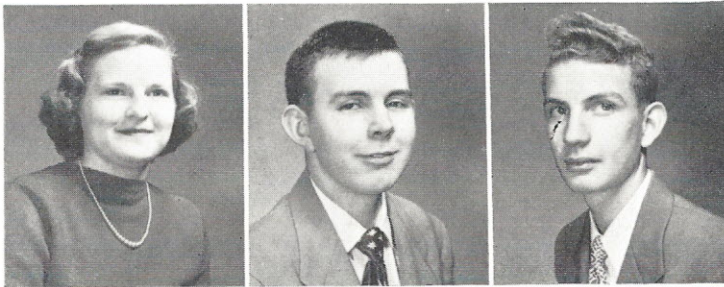
A. J. Mincey, C

1949 SCORES

Mt. Zion . . . 2	B.-C. 9
Mt. Zion . . . 7	Clover 8
Mt. Zion . . . 10	York 2
Mt. Zion . . . 6	Clover 7
Mt. Zion . . . 8	Lancaster 6
Mt. Zion . . . 7	Chester 8
Mt. Zion . . . 4	Dreher 9
Mt. Zion . . . 5	Bishopville 3
Mt. Zion . . . 10	Chester 1
Mt. Zion . . . 5	Dreher 3
Mt. Zion . . . 3	Bishopville 4
Mt. Zion . . . 7	B.-C. 6



ACTIVITIES



"RETTA" HEUSTESS
Editor-in-Chief

LEONARD DOUGLAS
Business Manager

JOHNNY TURNER
Assistant Editor



STAFF

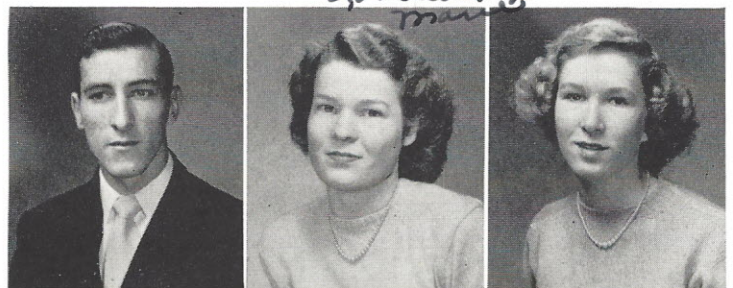
- "RETTA" HEUSTESS . . . *Editor-in-Chief*
 JOHNNY TURNER . . . *Assistant Editor*
 LEONARD DOUGLAS . . . *Bus. Manager*
 NADINE NELSON . . . *Literary Editor*
 MARIE KELLY *Photo Editor*
 GEORGE WELLS *Sports Editor*
 JOAN CRECELIUS *Art Editor*
 MRS. HINSON *Sponsor*
 MARGUERITE O'CONNELL . . . *Typist*

*Mrs. Taylor
 I sure have enjoyed
 being in your P.E. class. I
 hope you get that job in
 the lab. I hope I can see
 you again sometimes.
 Love always
 Mary*

GEORGE WELLS
Sports Editor

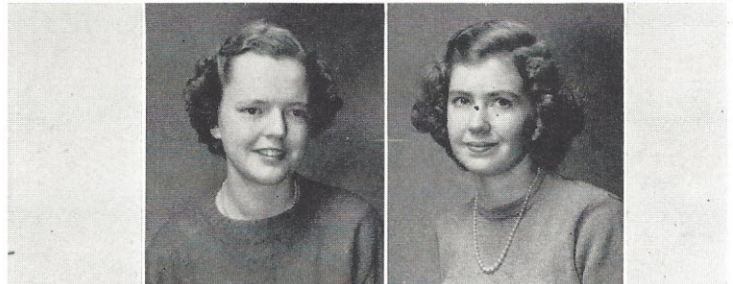
MARIE KELLY
Photo Editor

MARGUERITE O'CONNELL
Typist



NADINE NELSON
Literary Editor

JOAN CRECELIUS
Art Editor



Beta Club



Ed Jordan, *President*; "Retta" Heustess, *Vice-President*; Catherine McGill, *Secretary*; Steve Goude-lock, *Treasurer*; Jasper Morgan, Joel Pate, Leonard Douglas, Jelelie Norman, Nadine Nelson, Marguerite O'Connell, Johnnie Mae Cameron, Jackie Dominy, Olan Pullen, Mary Helen Christie, Loretta Mincey, "Mickey" Shaw, "Tina" Stevenson. Mary Evelyn Patrick, Louise Raley, Barbara Hollis, Betty Sue Davis, Betty Macfie, Gene Molnar, Joan Crecelius, Marion Jennings, Mrs. Hinson, Miss Maner, *Sponsors*.

Student Council



GENE MOLNAR, STEVE GOUDELOCK, MARGUERITE O'CONNELL. Absent from Picture: RAY COOPER.

- STEVE GOUDELOCK *President*
- RAY COOPER *Vice-President*
- MARGUERITE O'CONNELL . . . *Secretary*
- GENE MOLNAR *Treasurer*
- MISS NANCY WYLIE *Sponsor*

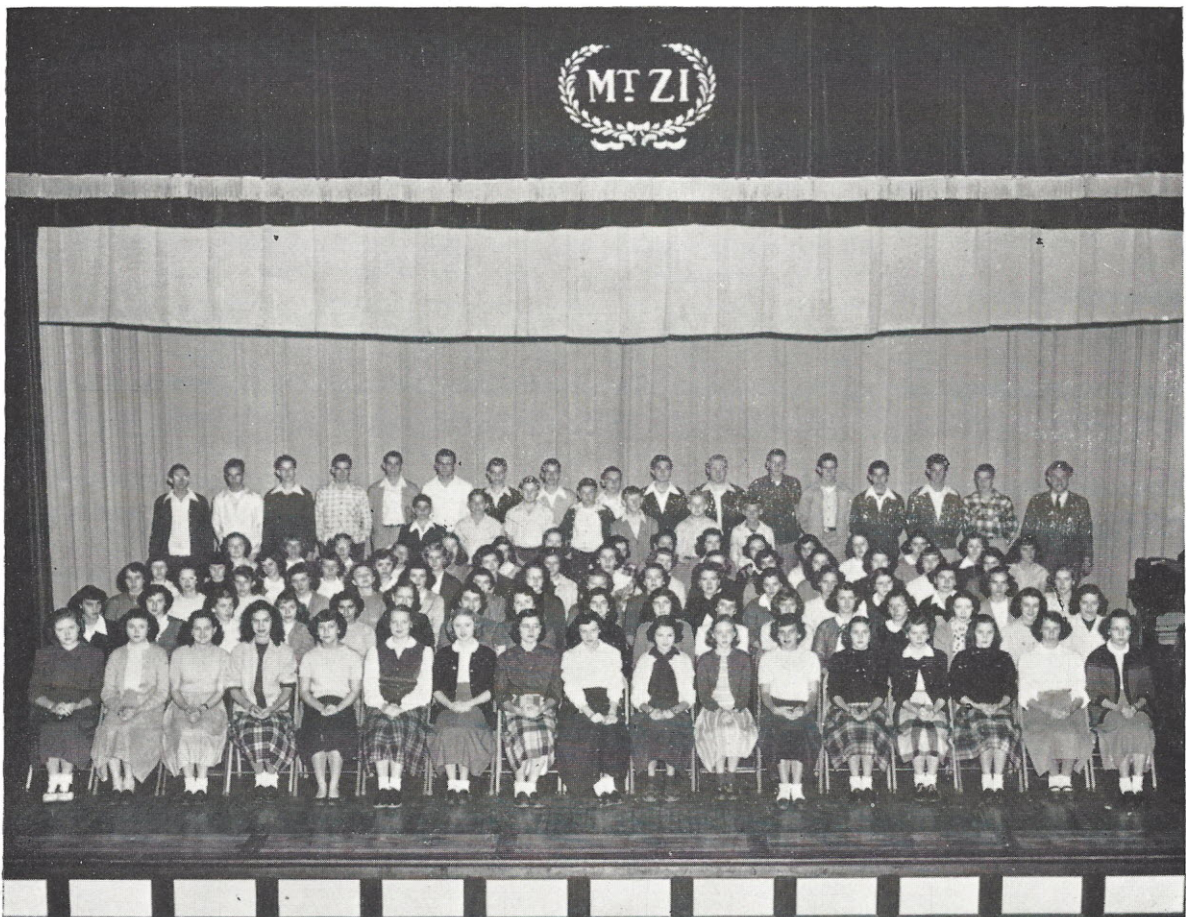


Jasper Morgan, Joe Stephenson, Marvin Haygood, Colleen Dean, Ray Cooper, Jeannette Watson, Gene Molnar, Marguerite O'Connell Steve Goudelock, Marion Jennings, Ann Turner, Virginia Townsend, Mary Ann Raines, Bobby Stephenson, Margaret McMaster, Miss Wylie, *Sponsor*; Ed Jordan.

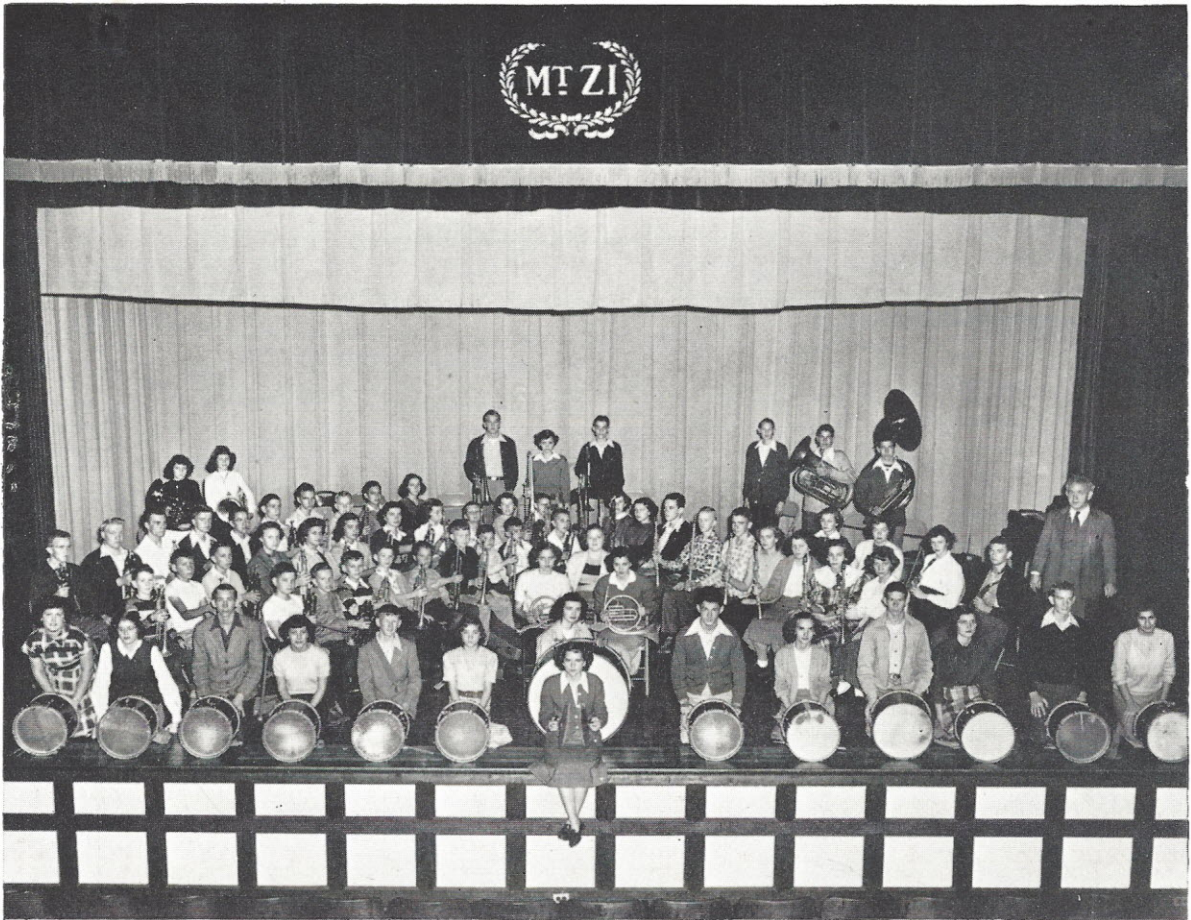
Glee Club



MR. W. E. MILLER
Director

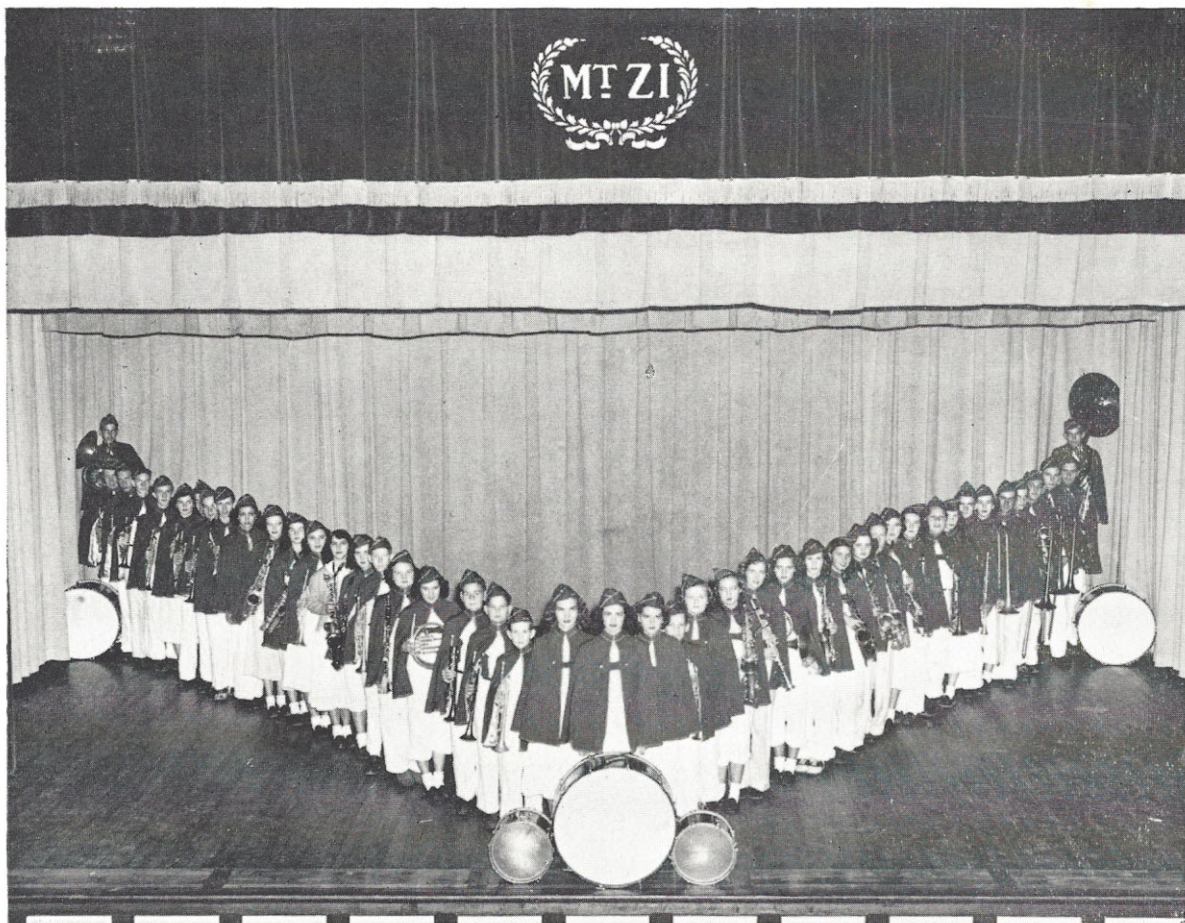


Band



Lavonne Bazemore, Steve Goudelock, Joe Stephenson, Johnny Turner, Betty Macfie, Marion Smith, Ray Cooper, Hugh Dunn, Verna Rutland, Willie Mae Bonds, Faye Dominy, A. C. Reed, Gene Bass, Edward Bartley, "Bud" McKnight, Robert Gay, Mary Ella Raley, Shirley Sykes, Jack Gandy, Bobby Daniels, Morris Dunn, Billy McDonald, Laughlin McDonald, "Buck" Owens, Joe Patrick, Tommy Smith, Junior Bradwell, Harry Shealy, Betty Crawford, Voncile Compton, Bobby Brice, Jimmie Stevenson, Spencer Kelly, Don Stamps, Bobby Lee, Harold Goodwin, Mark Doty, Billy Timms, Marion Hagood, Betty Sue Davis, Virginia Townsend, "Boots" McMaster, Miriam Stevenson, Gena Fant, Leon Parks, Barbara Robinson, Gene Molnar, Gene Branham, Buddy Reynolds, Mary Ann Raines, Mazie McMaster, Edwin Clark, Suzanne Crawford, Jo Margaret Enloe, Billy Melton, Loretta Mincey, "Mickey" Shaw, "Retta" Heustess, Jelee Norman, "Tina" Stevenson, Betty Smith, Virginia Ruth Davis, "Jiggs" Jeffers, Marvin Jennings, "Bud" Shaw, "Red" Branham, Betty Jean Jackson, Freddy Walsh, Louise Raley, Catherine McGill, Marlene Hutson, Mary Lou Beckham, Arthur Martin, Jimmie Martin.

Fairfield County Volunteers



Lavonne Bazemore, Steve Goudelock, Joe Stephenson, Betty Macfie, Johnny Turner, Marion Douglas, Hayne McMeekin, Billy McDonald, Laughlin McDonald, "Buck" Owens, Mitchell Rabb, Loretta Lewis, Carroll Cooley, Tommy Edmunds, Everett Rabon, Ray Cooper, Janie Rae Ashford, Harold Walsh, Mark Doty, Harold Goodwin, Henrietta Ronson, "Sonny" Taylor, "Mickey" Shaw, Loretta Mincey, Jimmie Martin, Arthur Martin, "Retta" Heustess, Miriam Stevenson, Jane Edmunds, Billy Melton, Martha Jo McMeekin, Martha Ann Castles, Jimmie Shealy, Nancy Miner, Harold Ray Brooks, Mannie Edmunds, "Mazie" McMaster, Elaine Stroke, Janis Glenn, Bernett Waitt, Betty McDowell, Isabel Wright, Lois Rutland, Madge Lewis, Louise Bradley, Doris Hinson, Paul Bazemore, Mary Robinson, Irvin Robinson, "Tina" Stevenson, Louise Raley, Catherine McGill.

Campus Comments

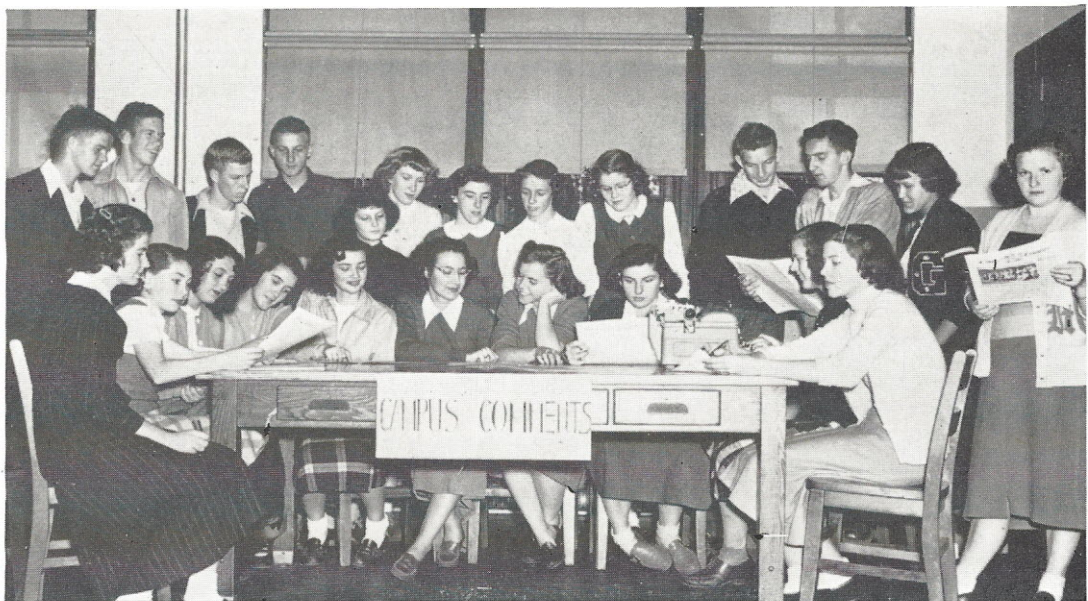


NADINE NELSON
CATHERINE MCGILL
LOUISE RALEY

STAFF

CATHERINE MCGILL . . . *Editor-in-Chief*
 LOUISE RALEY *Assistant Editor*
 NADINE NELSON . . . *Business Manager*
 MARION JENNINGS . . . *Asst. Bus. Mgr.*
 JOHNNY TURNER *Feature Editor*
 JERRY BRANHAM,
 "BOOTS" HOLSONBACK . . *Sports Editors*
 RETTA HEUSTESS *Club Editor*
 JOAN CRECELIUS,
 SARA QUATTLEBAUM . . . *Art Editors*
 JOE STEPHENSON . . . *Circulation Mgr.*
 NADINE NELSON,
 MARGUERITE O'CONNELL . . . *Typists*
 ED JORDAN, MARY ALICE CRAWFORD,
 SUSANNE CRAWFORD, BILLY MEL-
 TON, EDWARD LATHAN, CLAUDINE
 BEASLEY, BETTY MACFIE, MARY
 EVELYN PATRICK, MARY LOU BECK-
 HAM, ANNETTE PROCTOR, DORO-
 THY TURNER, BILLY PRICE—

Reporters



Joan Crecelius, Mary Evelyn Patrick, "Boots" Holsonback, Claudine Beasley, Louise Raley, Miss Smith, *Sponsor*; Catherine McGill, Betty Macfie, Nadine Nelson, Dorothy Turner, Retta Heustess, Annette Proctor, Ed Jordon, Johnny Turner, Marion Jennings, Mary Alice Crawford, Sara Quattlebaum, Marguerite O'Connell, Billy Price, Edward Lathan, Jerry Branham, Joe Stephenson.

Future Farmers of America

OFFICERS

BOBBY LUTZ *President*
 "COTTON" LATHAN *Vice-President*
 BOBBY POPE *Secretary*
 BILLY SIMS *Treasurer*
 JACKIE GANDY *Sentinel*
 JUNIOR STEVENSON *Reporter*
 MR. TOM GLADDEN *Sponsor*



JACKIE GANDY, BILLY SIMS, BOBBY POPE, "COTTON" LATHAN, JUNIOR STEVENSON, BOBBY LUTZ, MR. GLADDEN.



Charles Whitman, Freddie Walsh, Clyde Johns, Junior Stevenson, Bobby Price, Bobby Lutz, Charles Randal, Leon Brooks, "Sonny" Skipper, George Dean, Kenneth Tanner, Bobby Pope, Revon Tanner, Charles Smith, Jerry Reynolds, Raymond Brown, Mr. Gladden, Jackie Gandy, Sabie Cathcart, Larry Tolbert, Jack Hinson, "Cotton" Lathan, Billy Sims, Leon Geddings, John Hood.

Junior Homemakers Association



CAROLYN WEED, VIRGINIA DAVIS, GERRY PLAYER, CLAUDETTE SIMS, MISS WOOD, ANN SMARR, COLLEEN DEAN.

OFFICERS

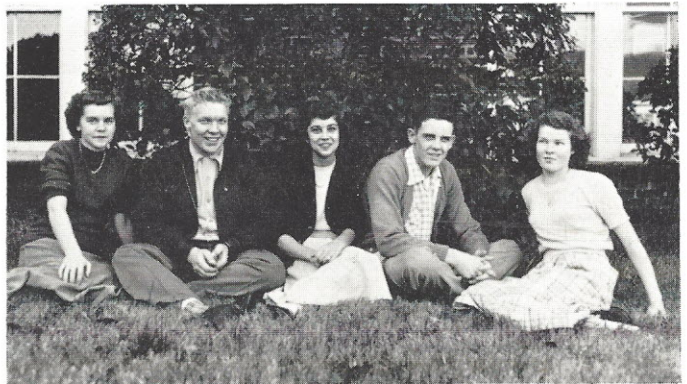
- CLAUDETTE SIMS *President*
 VIRGINIA DAVIS *Vice-President*
 GERRY PLAYER *Secretary*
 CAROLYN WEED *Treasurer*
 ANN SMARR *Reporter*
 COLLEEN DEAN *Record Book*
 MISS WOOD *Sponsor*



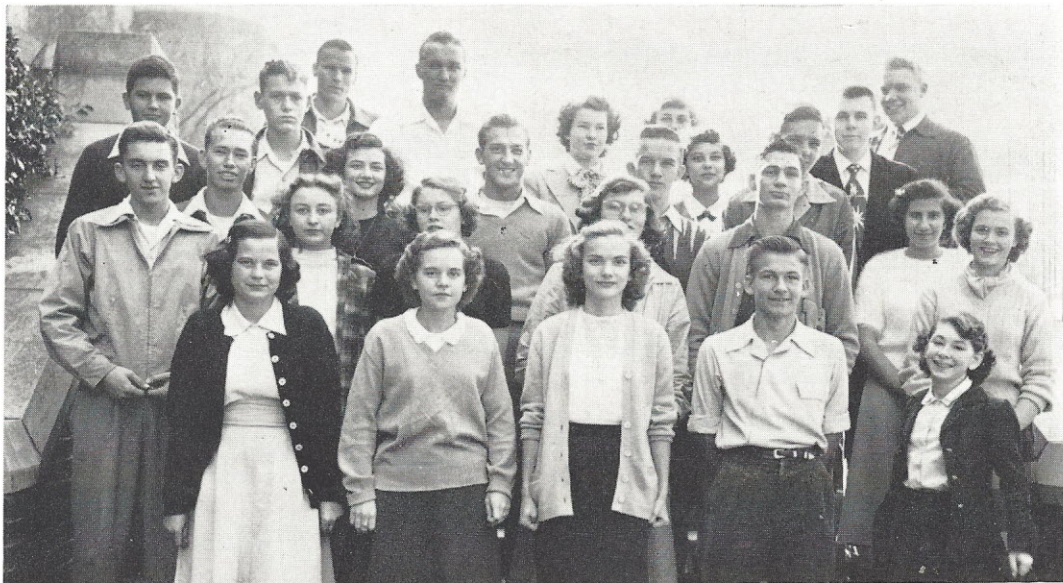
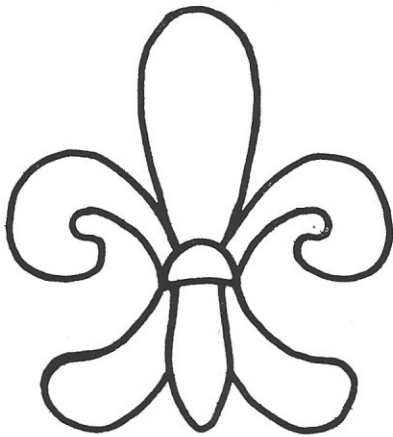
French Club

OFFICERS

GENE MOLNAR *President*
NANCY MILLER *Vice-President*
MARIE KELLY *Secretary*
STEVE GOUDELICK *Treasurer*
CATHERINE MCGILL *Social Chm.*
MISS ETHEL LANCASTER *Sponsor*



CATHERINE MCGILL, STEVE GOUDELICK, NANCY MILLER, GENE MOLNAR, MARIE KELLY.



Virginia Hicks, Catherine McGill, "Tina" Stevenson, "Stokes" Martin, Mary Evelyn Patrick, Miriam Stevenson, Robert Gay, Betty Macfie, Marion Jennings, Louise Dunn, Ed Jordon, Bernie Enloe, Louise Raley, Harold Goodwin, Lavonne Bazemore, Olan Pullen, Jeletie Norman, Leonard Douglas, Nancy Miller, Marie Kelly, Billy Ross, Marvin Jennings, Fred Porter, Odell Tanner, Miss Lancaster, *Sponsor*; Steve Goudelock, Gene Molnar, Marion Smith.

Drama Club



OFFICERS

STEVE GOUDELOCK . . . *President*
 "TINA" STEVENSON . . . *Vice-President*
 PATSY FARTHING *Secretary*
 PATSY WATERS *Treasurer*
 JOE STEPHENSON *Publicity*
 MISS JONES *Sponsor*

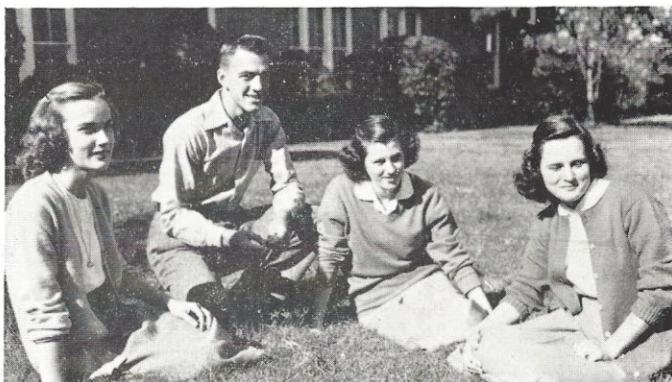


Marie Kelly, Marguerite O'Connell, Dorothy Turner, Veneria Mosley, Alva Beckham, "Boots" Holsonback, Evon Gartman, Mary Evelyn Patrick, Barbara Hollis, Loretta Mincey, Mary Helen Christie, "Mickey" Shaw, Herman Price, Nadine Nelson, "Red" Branham, Ed Jordon, Blanche Barrs, Annie Laura Stevenson, Patsy Waters, "Bud" Shaw, Joe Stephenson, Leonard Douglas, Steve Goudelock, Gene Molnar, Louise Dunn, Harold Goodwin, Glenda Hackle, "Bobbie" Jean Reed, Billie Jean Groomes, Sara Fowler, Betty Cogdill, Frances Broome, Annie Mae Croxton, Martha Peavy, Mavis Hickerson, Patsy Farthing, Anne Cathcart, Jeletie Norman, Myrtle Dean, Virginia Hicks, Billy Hudson, Marion Smith, Catherine Cathcart, Nancy Miller, Faye Watson, "Tina" Stevenson, Miriam Stevenson, Louise Raley, Julia Wilkes, Betty Macfie, Eleanor Baggott, "Pat" Coleman, Betty Ann Brice.

Math Club

OFFICERS

MARY HELEN CHRISTIE . . . *President*
 "MICKEY" SHAW . . . *Vice-President*
 "TINA" STEVENSON . . . *Secretary*
 JOEL PATE *Treasurer*
 MISS LEMMON *Sponsor*



"TINA" STEVENSON, JOEL PATE, "MICKEY" SHAW, MARY HELEN CHRISTIE.



"Jiggs" Jeffers, Mary Helen Christie, Barbara Hollis, Joan Watson, Jeanette Watson, Miss Lemon, Leon Hunt, Andy Turner, "Mickey" Shaw, Barbara McFadden, Loretta Mincey, Peggy Mincey, Dorothy Jane Sandifer, "Stokes" Martin, George Wells, Joan Rutledge, "Tina" Stevenson, Julia Ann Wilkes, Mary Alice Crawford, Colleen Dean, Betty Macfie, Louise Dunn, "Bobby" Jean Reed, Mary Frances Pope, Louise Raley, Charles Gibson, Marion Jennings, Lucy Ann Robinson, Ann Smarr, Claudette Sims, Ed Jordan, "Rip" Lane, Joel Pate, Miriam Stevensons, Carolyn Weed, Mary Catherine McMaster, Loretta Brinson, Mary Ann Meng, Johnnie Mae Cameron, Jean Farthing, Tommy Ruff, Furman Walker.

Latin

Junior Classical League



MARY MILLER, ARTHUR MARTIN, ANN SMARR.

OFFICERS

- ARTHUR MARTIN *President*
- ANN SMARR *Vice-President*
- MARY MILLER *Secretary-Treasurer*
- MRS. HINSON *Sponsor*

Best of Luck for Looper



Shirley Branham, Evelyn Buchanan, Margaret Coleman, Mary Alice Crawford, Colleen Dean, Gena Fant, Anne Macfie, Martha Louise McDonald, Barbara McFadden, Margaret McMaster, Mary Catherine McMaster, Mary Miller, ary Frances Pope, Sara Quattlebaum, Lucy Ann Robinson, Marlise Robinson, Joan Rutledge, Virginia Sharpe, Ann Smarr, Mary Ann Snowden, Freda Stames, Ann Turner, Georgia Mae Walling, Carolyn Weed, Mary Faye Young, Jerry Armstrong, Mark Doty, Jimmy Haynes Joe Looper, Arthur Martin, Jimmy Martin, Billy Melton, Leon Park, A. C. Reed, Bobby Stephenson, Andy Turner.

Mrs. Taylor, But
 It's about over - I ever forget
 how could I ever forget
 such a wonderful teacher
 and friend - Love + Miss
 Always to a
 wonderful person!!
 "Dot"

I'll always
 Remember!!
 Veneria
 Moseley

Distributive Education Club

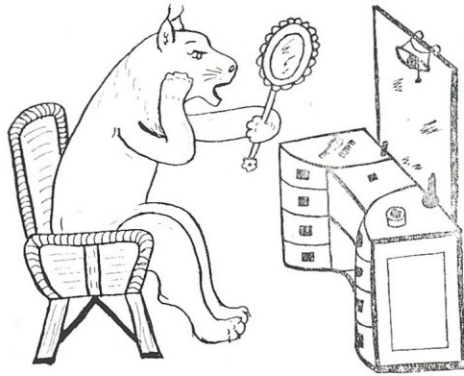
Dorothy Turner, Dorothy Terry, Alva Beckham, *President*; Veneria Moseley, Marie Kelly, Sam
 Jeffers, Clarence Sims, Mrs. Taylor, *Sponsor*; Jerry Branham, *Vice-President*; Howard Collins,
Secretary-Treasurer. Absent from Picture: Billie Jean Groomes, Wilbur Collins.



Louise Raley, Miriam Stevenson, "Bud" Shaw, Harold Goodwin, Retta Heustess, *President*;
 Miss Lemmon, *Sponsor*; Marion Jennings, Nadine Nelson, George Wells, "Jo" Margaret Enloe,
 Betty Macfie, *Secretary*; Mary Evelyn Patrick, Steve Goudelock, *Vice-President*; "Mickey"
 Shaw, *Treasurer*; Leonard Douglas, Jelelie Norman.

Future Teachers Club





FEATURES

I sure have enjoyed being in your
D. E. Class this year. Will miss you
next year.

Love,
Alva



Miss Senior and Harvest Queen

ALVA BECKHAM

Miss Hi-Miss

PATSY WATERS



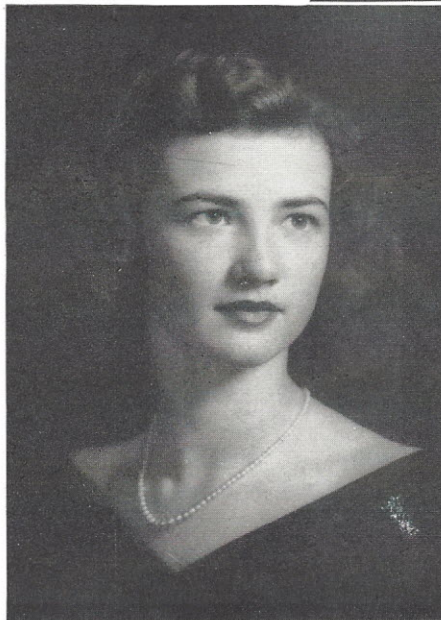
Miss D. A. R.

CATHERINE MCGILL



Miss Junior

LOUISE RALEY





Miss Sophomore

LUCY ANN ROBINSON



Miss Freshman

MARGARET McMASTER



Miss Sub-Freshman

VIRGINIA TOWNSEND

Memoirs



Sponsors

NELLE McCANTS
For Assistant Editor

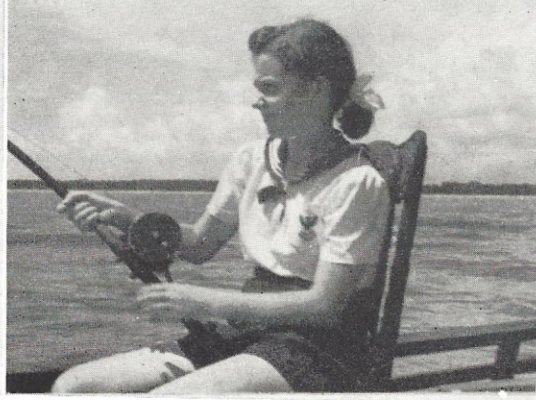
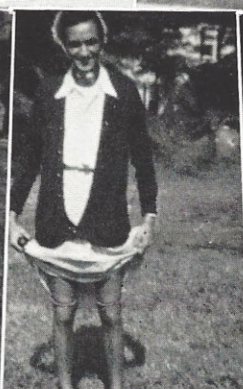


"JOSIE" WILLIAMS
For Editor-in-Chief

TOMMIE SANDERS
Literary Editor



MRS. C. E. McDONALD
For Art Editor



COMPLIMENTS OF
**NU-IDEA
SCHOOL SUPPLY CO.**
SUMTER, S. C.

Complete Line of
SCHOOL SUPPLIES AND
SCHOOL EQUIPMENT
Established 1921

COMPLIMENTS OF
**PEARCE - YOUNG - ANGEL
CO.**
WHOLESALE FOODS
FRESH - FROZEN - CANNED - DRIED
Service Wholesalers
CHESTER, S. C.

CONGRATULATIONS TO THE
SENIOR CLASS

**BELK'S
DEPARTMENT STORE**

Home of Better Values

WINNSBORO
SOUTH CAROLINA

SHIVAR SPRINGS, INC.

*SHIVAR SPRING
MINERAL WATERS
SHIVAR GINGERALE
SHIVAR PALE DRY
GINGERALE*

SHELTON
SOUTH CAROLINA

COMPLIMENTS OF

**SANCKEN'S
ICE CREAM**

COLUMBIA
SOUTH CAROLINA

OFFICE PHONE: 5134
RESIDENCE PHONE: 4-1766

COMPLIMENTS TO
SENIOR CLASS OF 1950



McLEOD'S
ESSO SERVICENTER

COMPLIMENTS OF
COLONIAL DRUG STORE
PHONE 279
WINNSBORO, S. C.

COMPLIMENTS OF
COLUMBIA BAKING CO.
COLUMBIA, S. C.

U. G. DESPORTES
COMPANY

"Yours for a Finer Fairfield"

WINNSBORO
PETROLEUM COMPANY

"Home Folks"

CONGRATULATIONS TO
OUR FRIENDS AT MOUNT ZION
**PEARCE - YOUNG - ANGEL
CO.**
WHOLESALE FOODS
COLUMBIA, S. C.

*Distributors of "Birds Eye"
Frozen Foods*

SHELL
PHONE 483
WINNSBORO, S. C.

**RUFF MOTOR COMPANY
INCORPORATED**

SALES AND SERVICE

**PHONE 215
WINNSBORO, S. C.**

COMPLIMENTS OF

S. GUMPERT CO., INC.

OZONE PARK 16, N. Y.

"JUST INSIST ON LANCE"

LANCE, INC.

BEST WISHES FROM

CHARLIE NORMAN

COMPLIMENTS OF

**THOMAS AND HOWARD
COMPANY**

**CHESTER
SOUTH CAROLINA**

*"We Appreciate Your
Business"*

PHONES: 174 - 175

TODD

**SPORTING GOODS
COMPANY**

Wholesale and Retail

**937 S. MAIN STREET
COLUMBIA 1, S. C.**

COMPLIMENTS OF
ECONOMY DRUG STORE
HORNE'S
LAUDERDALE GROCERY
CAROLINA AND
BOYD THEATRES

COMPLIMENTS TO
THE SENIOR CLASS
WINNSBORO
MOTOR SALES
COMPANY, INC.

WINNSBORO, S. C.

COMPLIMENTS OF
COMMUNITY
FEDERAL SAVINGS AND
LOAN ASSOCIATION
OF WINNSBORO

HONORING THE SENIORS
OF '50

HANNA AND DOTY
MOTOR CO.

Sales and Service

WINNSBORO, S. C.

COMPLIMENTS OF
HAYNE D. McMEEKIN

COMPLIMENTS OF
FARMER'S EXCHANGE
RILEY M. BRICE, PROPRIETOR

MEATS • GROCERIES

FEED • SEED

BEST WISHES TO
THE SENIORS OF '50



M. W. DOTY AND SONS



COMPLIMENTS OF
A. E. DAVIS & CO., INC.
GROCERIES • MEATS
PRODUCE
PURINA CHOWS • SEEDS
FARM SUPPLIES

DIAL 411

BEST WISHES TO
THE SENIORS

From

L. D. DUNN, JEWELER
107 CONGRESS ST. DIAL 249
WINNSBORO, S. C.

COMPLIMENTS OF
McMASTER'S
DRUG STORE

COMPLIMENTS OF
UNION BUS TERMINAL
WESTERN UNION
TERMINAL GRILL

PHONE 494

COMPLIMENTS OF
RENWICK
PONTIAC & TIRE CO.

Sales and Service

PHONE 486

READ
THE NEWS AND HERALD

Fairfield County Weekly

WINNSBORO, S. C.

EST. 1844

\$2.00 YEARLY

CONGRATULATIONS TO
THE CLASS OF 1950



UNITED STATES
RUBBER COMPANY



WINNSBORO, SOUTH CAROLINA

COMPLIMENTS OF
THE MEN'S SHOP
WINNSBOBO, S. C.

★
COMPLIMENTS OF
BANK OF FAIRFIELD
WINNSBORO, S. C.
★

COMPLIMENTS OF
THE ICE CREAM SHOPPE
CAROLINA THEATRE BUILDING
WINNSBORO, S. C.

★
**MERCHANTS AND
PLANTERS BANK**
CAPITAL \$ 50,000.00
SURPLUS \$100,000.00
SAFE — SANE — SOUND
★

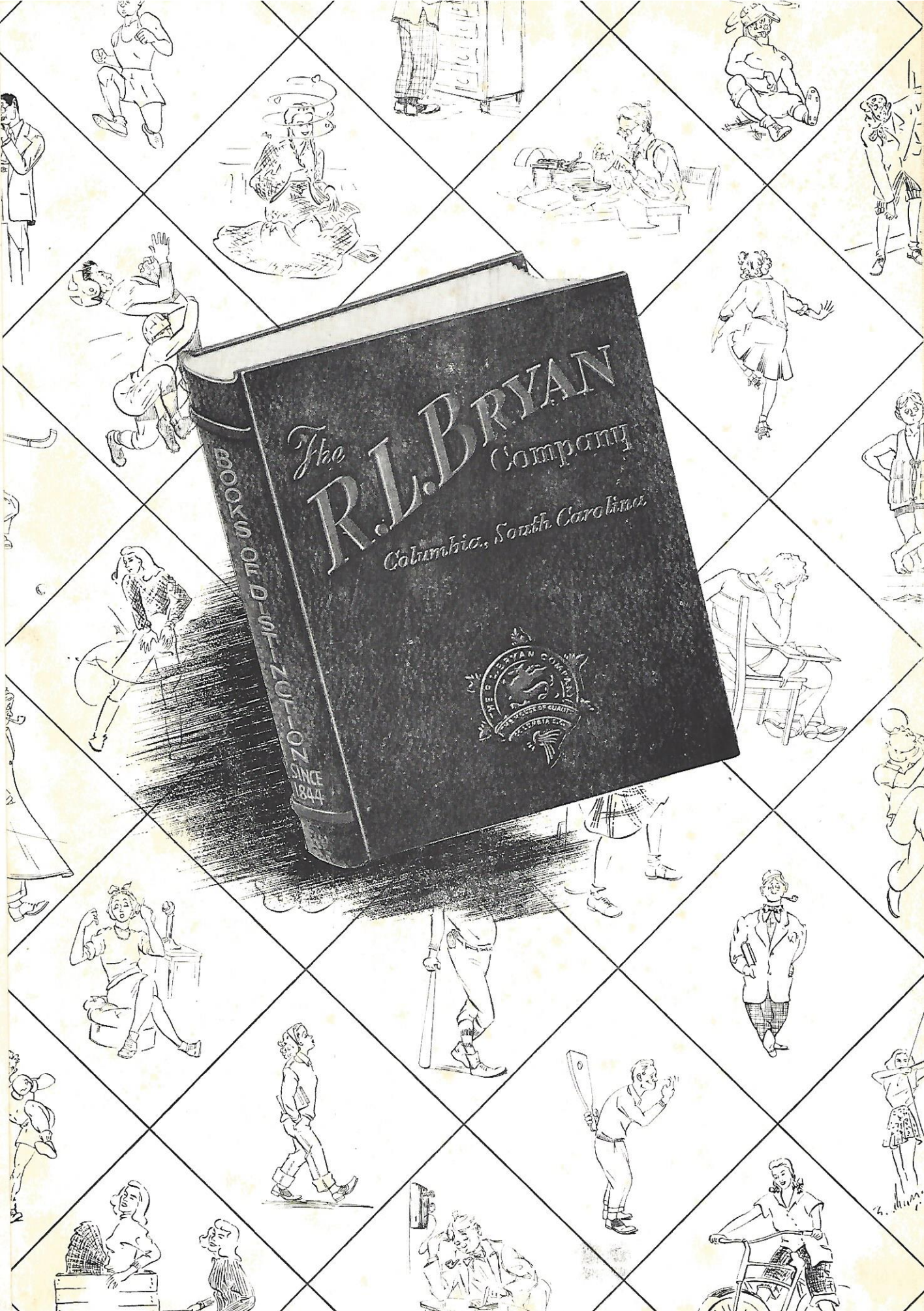
COMPLIMENTS OF
**FAIRFIELD LAUNDRY
AND CLEANERS**
WINNSBORO, SOUTH CAROLINA
PHONE 224

POPE'S ESSO STATION
PHONE 420
CONGRESS AND HIGHWAY STREETS

COMPLIMENTS OF
GOUDELOCK'S GROCERY

COMPLIMENTS
TRIANGLE RESTAURANT

COMPLIMENTS OF
**GERMANY—ROY—BROWN
COMPANY**
and
JOHNSON BUICK COMPANY



The
R.L. BRYAN
Company

Columbia, South Carolina

BOOKS OLD - NEW - ZEPHYRUS - SINCE 1844



412
R. L. BRYAN COMPANY
COLUMBIA
SOUTH CAROLINA
KINGKRAFT