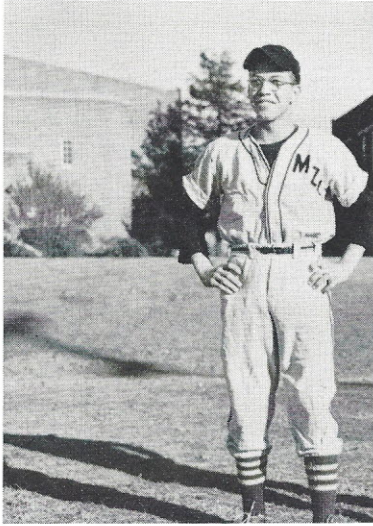


# BASEBALL



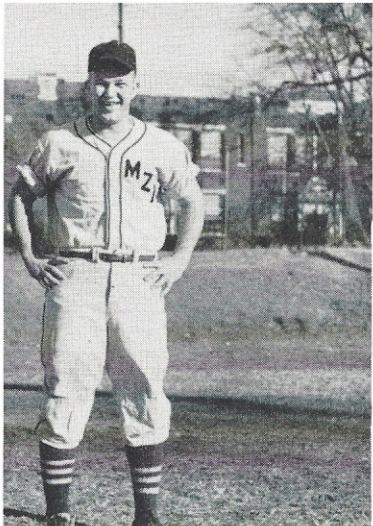
RAY COOPER  
Second Baseman



JERRY WALSH  
Left Fielder

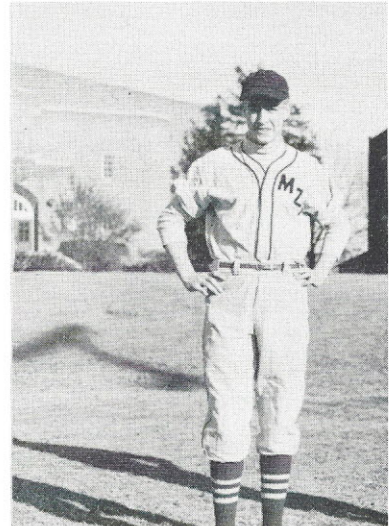
## SCORES FOR 1949-1950

M.Z.I. . . . .	9	York . . . . .	6
M.Z.I. . . . .	9	Clover . . . . .	10
M.Z.I. . . . .	5	Lancaster . . . . .	2
M.Z.I. . . . .	7	York . . . . .	3
M.Z.I. . . . .	3	Clover . . . . .	5
M.Z.I. . . . .	4	Chester . . . . .	5
M.Z.I. . . . .	7	Lancaster . . . . .	11
M.Z.I. . . . .	0	Chester . . . . .	2
M.Z.I. . . . .	4	Olympia . . . . .	0
M.Z.I. . . . .	6	Olympia . . . . .	5



RUDY HALL  
Catcher

*Not Shown:*  
JOHN T. HARRISON  
Coach



"RIP" LANE  
First Baseman