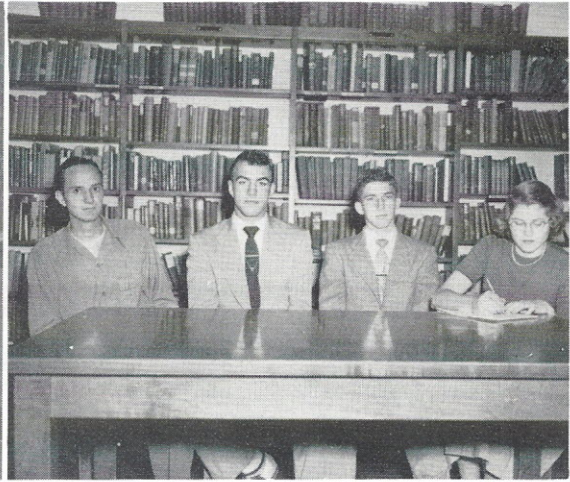


STUDENT COUNCIL



John T. Harrison, Sponsor; Nancy Caroline Wylie, Adviser; W. R. Price, Adviser.



Jasper Morgan, Treasurer; Joel Pate, President; Leon Hunt, Vice President; Marion Jennings, Secretary.



Second Row, left to right: Jerry Walsh, Jimmy Martin, Billy Melton, Felicia Turner, Mary Evelyn Patrick, Joanne Watson, Mary Lou Beckham, Joan Rutledge, Genevieve Wilson, Laughlin McDonald, Ray Cooper, George Bass, Joy Jennings. *Backs Turned:* Jasper Morgan, Joel Pate, Leon Hunt, Marion Jennings.