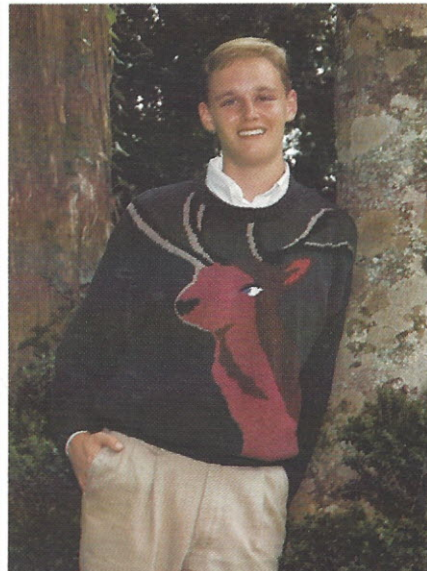
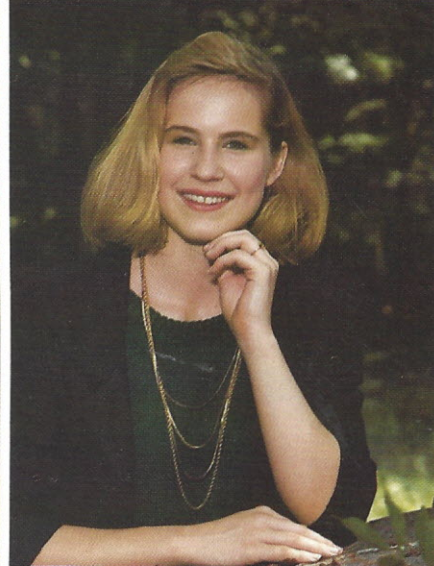
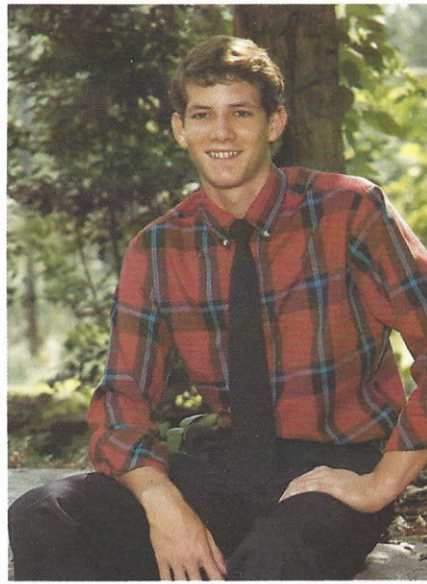


*Doug Raley  
Gina Robinson  
Belinda Surratt*

*Matthew Rambo  
Elizabeth Shedd  
Allan Turner*

*Beverly Rice  
Janet Spencer*



*But you can't tell him  
much  
You can tell a  
Senior*

*You can tell a Senior:  
by their disregard of rules  
by the cloud of dust in the parking  
lot at the beginning of lunch  
by the college applications in the  
mail  
by his order pad and pencil always  
ready to sell something  
by their superior knowing attitude  
Yes, you can tell a Senior . . . but  
you can't tell him much!*