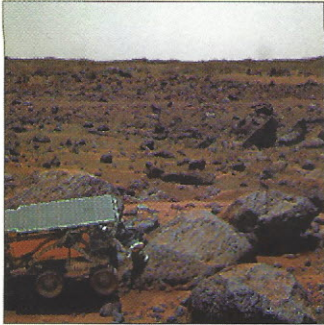


Science

NEWS



NASA

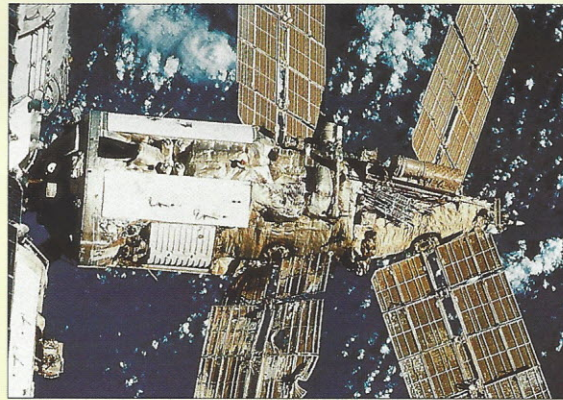
▶ Russia's aging *Mir* space station collides with an unmanned supply vehicle in June and is seriously damaged. This is only one in a series of crises casting doubt on the viability of the station.

◀ Viewers worldwide see the first-ever high-resolution color pictures of Mars when the *Pathfinder* spacecraft lands July 4. The lander and its rover, *Sojourner*, collect and transmit extraordinary data for three months.

AP/Wide World



▶ For \$8.36 million, Chicago's Field Museum of Natural History buys "Sue," the most complete *Tyrannosaurus rex* fossil yet discovered. The sale occurs October 4 at Sotheby's in New York.



NASA



Reuters/Archive Photos



Reuters/Archive Photos

◀ In September, CAT scans of petrified dinosaur eggs found in China reveal a dinosaur embryo.

▶ Scottish scientists in February 1997 announce the world's first cloning of an adult mammal. The sheep, named Dolly, fuels controversy over possible misuse of the technology.

flash

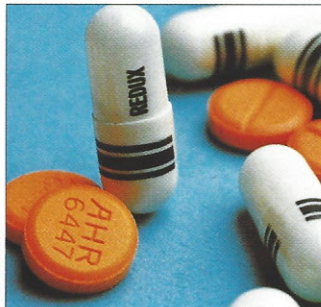
Fuel cells that convert a fuel's energy directly into electricity are being developed for use in cars, making possible an efficient, low-emission car of the future.

The first prescription pill for male-pattern baldness is approved by the Food and Drug Administration in December. The drug Propecia is made by Merck and Company.



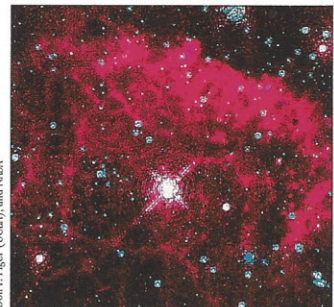
©Ted Horowitz, The Stock Market

▶ Research produces medical breakthroughs, including a genetically engineered "bullet" molecule being tested to fight cancer and new drugs to control or prevent Parkinson's disease, osteoporosis and congestive heart failure.



Matt Mendelsohn

▶ The popular diet regimen fen-phen is pulled off the market in September. The combination of fenfluramine and phentermine is shown to cause heart valve disorders, as is the diet drug Redux, also recalled.



Don F. Figer (UCLA), and NASA

▶ Aided by the Hubble Space Telescope, astronomers discover the Pistol Star—the brightest star yet observed in the Milky Way. The Pistol Star is 25,000 light years from Earth.