

SC.041 RECORDS FROM THE COUNCIL JOURNAL DURING THE EARLY COLONIAL DAYS OF SOUTH CAROLINA REGARDING LAND GRANTS.

Entered in September 1990 by Robert R. Hill Sr. of Brandon, Florida.

Source: My research at S.C. Archives, Researching Land grants & Deeds, Book by G. A. Hill entitled "Hill-Hill Mobley Connections of Fairfield County and information from Mrs. Jeannette Christopher of Carlisle, S.C.

CHARLES HILL LAND GRANT OF NOVEMBER 1749.

Note by Robert HillSr: This Charles Hill later proves to be Charles Hill Sr., father to William Augustus Hill & Charles C. Hill Jr., both of Fairfield County, South Carolina.

This was Charles Hill's first land grant. Those prior to 1749 was for Charles Hill Esquire of Charleston.

Charles Hill Sr. applied for another land grant (his second) on 6th December 1768, but apparently died very shortly afterwards, because on 25th February 1769 the 100 acres was granted, but in May of 1769 the grant was ordered to be given to his heir and son, William Augustus Hill. Thus Charles Hill died either in late December 1768 or January or early February of 1769.

Source for following: Minutes of the Council Journal

QUOTE: "The Petition of Charles Hill
The Humble Petition of Charles Hill setting forth that the Petitioner (was-or?) from Pensilvinia (sic) in order to settle in this Province, has wife and seven children, under ages, desirous of settling on the North side of the Broad River, running into Santee (River) and never has had any land granted to him, THEREFORE, Humbly prayed his Excellency & their Honors order to the Surveyor General to run out to him 450 acres of land as aforesaid and the Petitioner, as is duly bound should ever pray of council.
signed/ CHARLES HILL
2nd October 1749." (Monday)

Tuesday, 3rd October 1749: QUOTE "The Petitioner appearing and being sworn & examined to thereto wit of what is set forth on his said petition, the Prayer thereof was granted and it was accordingly ORDERED that the Deputy Secretary make out a Warrant to the Surveyor General to admeasure and lay our for the said CHARLES HILL 450 acres of land on the Northside of Broad River as prayed for.

In the Council Chamber, this 3rd October 1749.

Present:

His Excellency the Governor; also there was a name
that was not legible, along with Edmund Askin,
Charles Pinckney, H.B. deRsaufain (Esquires) "
(End of Quote).

Based on the above information, and the letter below from the
District Surveyor, the Council ordered the Deputy Secretary
to issue an order to the Surveyor-General on Tuesday, 3rd
October, 1749 in Charleston. Action was very fast because on
the very next day, (Wednesday) 4th October 1749, George
Hunter Esquire (Surveyor General) apparently had been
notified by the Deputy Secretary and had notified the
District Surveyor (John Fairchild) of the order to make the
survey for Charles Hill's petition. The actual survey by
Fairchild was dated 20th November 1749.

(The Surveyor-General then laid out the following Plat)

Plat for Charles Hill

This line runs from NE corner to SE corner

Dogwood Tree (3 pine trees) white oak white oak
x-----x-----x-----x-----x-----x
| NE Corner SE Corner / |
West | |
| |
a x Pine Red Oak x\
l | :\
l | :/
x Red Oak X elm
v | The Zig Zag Line / |
a | represents a | :
c l | 450 acre tract wandering creek \ :
a a | that runs along the X\elm
n n x Red Oak Eastern Boundary,the : |
t d | creek empties into :/
____| Broad River at the / :
/ :\
/ c _ : \
/ r /xx:\ c \ (Lower left corner or SW ash x\
e /xxx:x\ r \ corner is a large island) : |
e /xxxx:xx\ e \
k/xxxxx:xxx\ e \
corner x____\ k \ CORNER-->__x/
____BROAD_RIVER____-->____

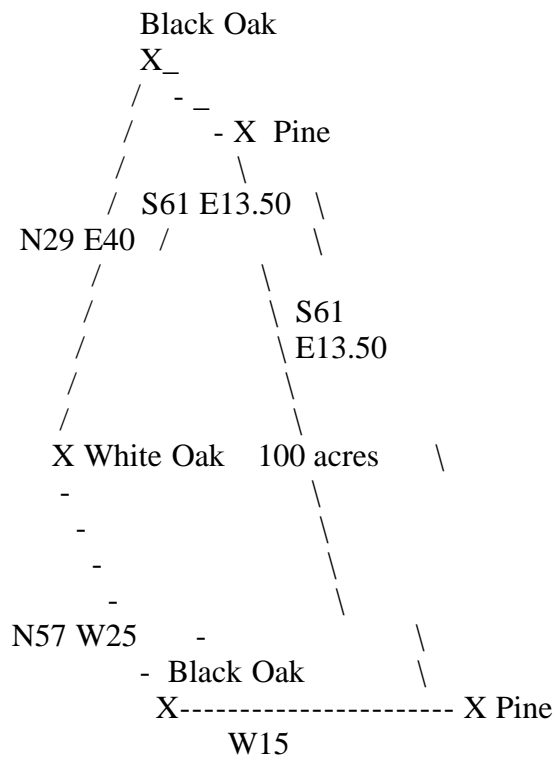
Note by Robert Hill Sr: It is hoped that the reader will not be
confused, but in reality, the land had it's boundaries
tilted...On the West side, the boundary was the Broad River,

which actually flowed or ran from the Northwest corner towards the Southeast corner (almost South corner). From there the boundary ran from the Southeast corner somewhat northward towards the Northeast corner, where, a creek was wandering in and out of the boundary. From that corner, where a white oak marked the Eastern corner of the tract, the line ran Northward to a Dogwood tree, from which the line then dropped Westward until it reaches the Broad River, which was the Southwest Boundary and which actually was flowing from the Northwest towards the Southeast (left to right).

20th November 1749 Pursuant to a Receipt directed under the hand and seal of George Hunter Esquire, Surveyor General, dated 4th October 1749, I have measured and laid out unto CHARLES HILL, a tract of land containing Four Hundred & Fifty Acres (450), Situate and being on the North side of Broad River, butting and bounding to the Southwestward (side) on said river and on all other sides vacant lands and hath such shape form and marks as the above plat represents. GIVEN UNDER MY HAND THIS 20th DAY OF NOVEMBER 1749.

signed/ John Fairchild, District Surveyor

LAND GRANT TO ABLE HILL 15TH DECEMBER 1772.



South Carolina)
Pursuant to a receipt from John Breman Esquire, Deputy

Secretary General, dated 1st day of December 1772, I have admeasured and laid out unto ABLE HILL a tract of land containing One Hundred Acres of land, situate in Craven County and on a branch of Turkey Creek, beginning at a Black Oak (bordering) on vacant land, S 61 E 13.50 to a Pine (tree) and George Rutlege's line, (then) S 40 to a pine (Tree) on S line (Then) W 15 to a Black Oak (on) Robert Cowen's corner (then) N 57 W 25 to a White Oak on Cowen's line (then) N 29 E 40 to the beginning, bounded on all side by vacant lands, except on the SE and hath such shape and marks as the above plat represents.

Surveyed this 15th day of December 1772.

Jas. Pinkerton
District Surveyor

CHARLES HILL LAND GRANT CERTIFIED 25TH FEBRUARY 1769

South Carolina)

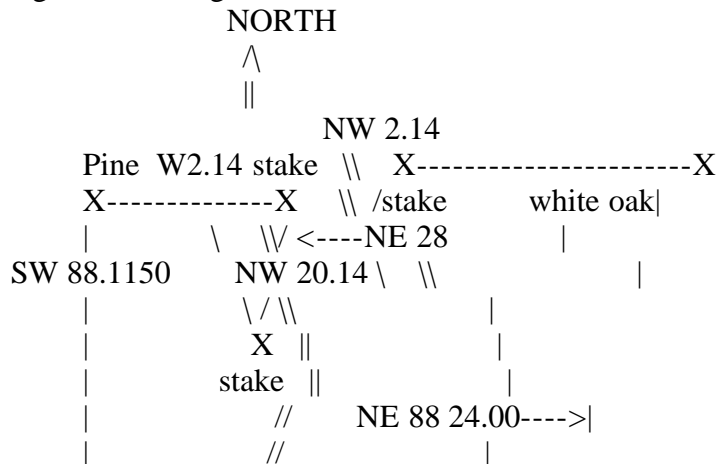
Pursuant to a receipt directed by Breman, Deputy Secretary General, dated December 6th 1768, I have surveyed for CHARLES HILL a tract of land containing One Hundred Acres in Craven County, situated on the North Fork of Wateree Creek, it being five foot wide and four inches (in) depth, bounded (on) NW by land laid out unto WILLIAM HILL, SW by land surveyed for CHARLES HILL SR., (decsd), this may read due East (and?) the other sides vacant and hath such shapes forms and marks as the plat below represents.

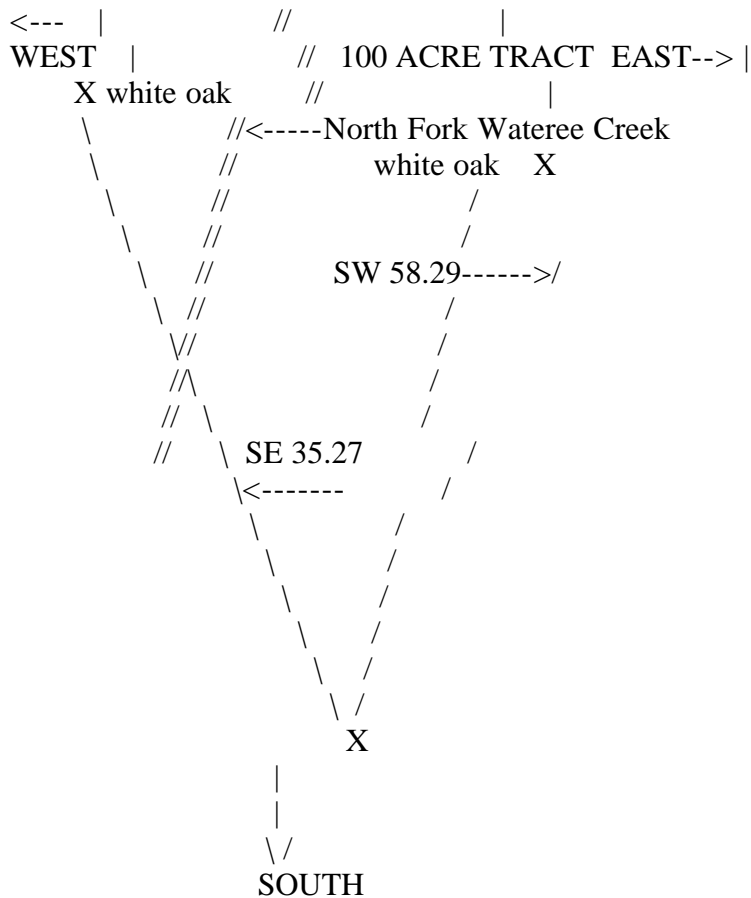
Certified February 25th 1769

Richard Winn
District Surveyor

Ord. (ordered?) 30 October 1771

The plat is drawn below and the reason for this spacing is so that the plat can be printed on one page and not split. True North as well as the entire plat is inclined by about 2 degrees to the right.



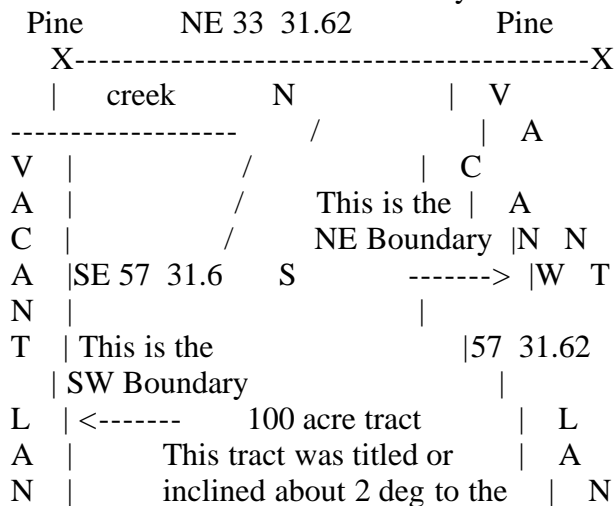


LAND GRANT FOR CHARLES HILL (HAS TO BE CHARLES C. HILL JR.)
DATED 14TH APRIL 1773.

South Carolina)
Pursuant to a receipt directed by James Purcell, Deputy
Secretary General, dated 6th April 1773, I have surveyed for
Charles Hill One Hundred Acres of land, situate on the
Branches of Wateree Creek in Craven County, bounding on the
SE (by) Joseph Bradley's land, the other side vacant lands
and hath such shapes forms and marks as the above (it's
below) plat represents.

Surveyed 14th April 1773. Richard Winn D.S.

This is the NW Boundary



D		left, the bottom actually		D
		being the SE Boundary.		
		NE 33 31.60		
X	-----			X
Pine				Pine

Land of Joseph Bradley

Note by Robert Hill Sr: This apparently was actually Charles Hill Jr., a son of Charles Hill Sr. This was actually the same man named in the old Moses Hill Bible Page, who's wife was named Mary (Heyll) Hill and who's full name was listed as Charles C. Hill. In my opinion he was the cousin of our Moses Hill.

END OF SC.041 DATA