



# Fairfield County Genealogy Society

## 3<sup>rd</sup> Quarter NEWSLETTER

---

 Volume 27 Number 3, <sup>32nd</sup> Year
 

---



---

 3<sup>rd</sup> Quarter 2016
 

---

### TABLE OF CONTENTS

Fairfield County Genealogy Society Board of Directors, Officers and Support Personnel .....	2
Fairfield County Books Available .....	2
President's Message .....	3
Mission Statement.....	5
Volunteers needed .....	5
Meetings/Events/Announcements .....	6
Historic Freedmen's Bureau Project Completed .....	9
A Noble and Gallant Soldier to the Last .....	11
"Well That Settles It" .....	12
95 Years Ago - Sgt. Fritz Max Kreutzer, US Army (Murder in Mossy Dale) .....	13
Family Stories and Articles in the Fairfield County Genealogy Society Newsletters .....	17
Fairfield County Genealogy Contact Information .....	17
News at the Fairfield County Historical Museum .....	18
Historical Sketches of Fairfield County .....	19
Cemetery Committee Reports .....	21
A Fairfield County Man Badly Used Up in Atlanta .....	24
Reunions/Family Celebrations .....	25
Social Media Committee Reports .....	26
DNA Testing .....	27
Autosomal DNA Report .....	28
Chester District Genealogical Society Annual Meeting .....	28
Interesting New Web Site Finds .....	28
From the 2014 Trivia Calendar .....	29, 30
Recent Member Queries and Answers .....	31
Books Donated to the Fairfield County Genealogy Society .....	47
Pedigree Chart for Jefferie Ray, daughter of Ethel Anne Harvey .....	49
Members and Surnames .....	53
Fairfield County Genealogical Society <b>2014 Trivia Calendar (History Trivia You Don't Want to Miss)</b> ...	57
Membership Renewal .....	57
Membership Application/Renewal form .....	58
Queries Index .....	59
Index .....	62

### \*\*\*\*\* MEMBERSHIP RENEWAL TIME! \*\*\*\*\*

Please note that if you choose to receive newsletters by USPS vs. email, that the rate is \$25.00/year.

#### Disclaimer:

All newsletters that are being made available for your viewing and use are not copyrighted. Our use of any original work submittals contained within these newsletters such as articles, compiling, photographs or graphics, are given by permission, have become the property of the Fairfield County Genealogy Society to be disseminated freely to the public and conform to Fair Use Doctrine & Copyright guidelines.

**FAIRFIELD COUNTY GENEALOGY SOCIETY  
BOARD OF DIRECTORS, OFFICERS AND SUPPORT PERSONNEL**

**Executive Board of Directors**

President:	Eddie Killian
Vice-President/Program Director:	Frances Lee O'Neal
Recording Secretary:	Suzanne P. Johnson
Treasurer:	Larry Ulmer
Corresponding Secretary:	(open)
Member at Large:	Ben Hornsby
Immediate Past President:	Bill Wall

**Ex Officio Board of Directors**

Liaison Committee Chair:	Pelham Lyles
Cemetery Committee Chairman:	Jon Davis
DNA Committee Chairman:	James W Green III
Social Media Committee Chairman:	Eddie Killian
Newsletter Editor:	(open)

**Committee Members & Genealogy Research Volunteers**

Liaison	- Community Outreach	Rev. Eddie Woods
	- Community Outreach	Janie Price
Cemetery	- Cemetery Research	John Hollis
	- Cemetery Research	Green Giebner
DNA	- Fairfield Co. SC Project	Nancy Hoy
Social Media	- Webmaster	Larry Ulmer
	- Facebook	Frances Lee O'Neal
	- Newsletter	Linda Frazier
	- LinkedIn	Open
Research	-Volunteers	Jon Davis, Nancy Hoy (via email)
Digitalization	-Volunteers	Ken Shelton (microfilm)
		Larry Ulmer (oversized documents, yearbooks, scrapbooks)
		Brenda Carol Thompson (family files)

**Fairfield County Family Books Available**

Confederate Pension Records	\$15.00
Death Notices from Fairfield Herald	\$35.00
Equity Court Records 1807-1870	\$35.00
Fairfield Adjacent Cemeteries Vol. 4 (white)	\$30.00
Fairfield Cemeteries Vol. 3 (yellow)	\$30.00
Fairfield Eastern Cemeteries Vol. 2 (pink)	\$30.00
Fairfield Remembers Sherman	\$30.00
Fairfield Western Cemeteries Vol. 1 (green)	\$30.00
Fairfield Winnsboro Cemeteries Vol. 5	\$30.00
Family & Abandoned Cemeteries Vol. 3 (white)	\$30.00
Marriages from Fairfield Herald 1866-1911	\$30.00
Old Brick Church/1788	\$12.00
The Mobley's and Their Connections, W.W. Dixon	\$25.00
1876 Fairfield County (Black & White)	\$10.00
1876 Fairfield County (Color)	\$15.00

[Woodard Footprints: Tracing the Footsteps of the Viking Woodward in Normandy to England to Jamestown, Virginia, and Onward to Settlement in South Carolina and Alabama By Merle Woodard Safford](#)

Paperback: \$36.50

Order from:

<https://www.lulu.com/shop/search.ep?keyWords=merle+safford&type=>

## From the President, Robert Edward "Eddie" Killian, Jr.



Lifetime member Robert Hill (right) and his wife, Janice (left) brought us his dad's lifelong research collection (20 boxes) up from Florida for the Fairfield County Family Resource & Research Library located on the 2<sup>nd</sup> floor of the Fairfield County Museum. Thank you very much!

We have begun to process through Robert Hill Sr.'s collection, digitize and catalog. It has been great to look, read and enjoy your dad's hard work. It is a valuable addition to our research collection. We hope to have some of the digitized records on the FCGS web site soon for your enjoyment.

Hello everyone!

Hope all is well with you and you have had many successes in finding your family genealogy and DNA roots over the last quarter. As mentioned above we have received an exciting new collection, we are calling it the Robert Hill Sr. Collection. This collection contains books, letters, charts, maps, and much more and should assist us in helping researchers and expedite inquiries, especially Hill family inquiries. Check out the list so far from this collection and other books donated by Kathleen Hart, Jacqueline Broom LaFreniere and Ken Baldwin to be added to our library collection later in this newsletter. We continue to enjoy meeting and assisting our new and old genealogy research friends and old and new members. Members, thank you for all the faithful support and generosity in giving toward the society and supporting the efforts of our board and other local members. We have continued to enjoy meeting new friends and members from many states, this quarter as far as Louisville, Kentucky. Through all our efforts, I believe we have met our mission and goals to bring success in growing each one's family trees and giving out a dose of old time, friendly Southern Hospitality.

This quarter has continued to be very busy with the new scanners as time permits, but as you all know, walk-in visitors and researchers get priority over back office work like digitizing our collection. Our focus is on digitizing our library family collections to enable our members to do much of their research from the comforts of their own homes. Betty Carol Thompson has been digitizing the family vertical files. She has just about finished with all of the "A" family names. She has been a tremendous help and is keeping me behind adding this digitized information to our "Families" web site pages. This past quarter we have added additional family file information (mostly "A"), additional church information, thanks to Larry Ulmer additional Mt. Zion College yearbooks (have 1945- 1947, 1950-1955, need to at least borrow other years if you have them, so we can digitize them) and some additional scrapbooks from Sara Bolick Scrapbook Collection, and thanks again to Ken Shelton additional microfilm digitized, all of the current digitized information has been put up on our web site. We apologize that Zoom search engine has been not working very well the past couple of months. Zoom search engine has been fixed and is working very well, thanks to Larry Ulmer. You need try the search option on the Members Only pages again. As stated last quarter, we are focusing this year on digitizing our collection as much as possible. We will still keep up with email requests and researcher demands as well as we can.

Thank you executive board officers: Frances O'Neal (vice-president, program director, FACEBOOK coordinator), Suzanne Johnson (recording secretary, museum archives collection manager), Linda Frazier (corresponding secretary, newsletter editor), Larry Ulmer (treasurer, membership director, web master), Ben Hornsby (board member at-large) for keeping our society working like a well-oiled machine; keeping others informed and helping us meet our mission. We all appreciate all of the support and committee members work. Thank you board committee members: the Cemetery Committee continues to research, investigate new locations, document (updating our cemetery information, 22,000+ tombstone pictures, over 50,000+ entries in our spreadsheet database) and updating FindAGrave. Jon Davis (chairman) and his committee members, Green Geibner & John Hollis do an outstanding job with this committee; the DNA Committee continues to research, document by building family trees and assisting members with their DNA request and results. James W. Green III (chairman) and his committee member Nancy Hoy are also doing a great job with this committee. Nancy Hoy (chairwomen for Fairfield Families Project) has with her building family trees, maintaining DNA results and GEDCOM's has help this project grow very fast over the last few months. Those of you that have done or would like to do DNA need to join the Fairfield Families DNA Project. You can email Nancy or James for assistance. Thanks for the feedback liking the newsletter. We have a wonderful volunteer (Linda Frazier, Newsletter Editor) that works very hard at getting a quality newsletter out to you each quarter. Pelham Lyles (chairwoman), Rev. Eddie Woods African-American activities and Janie Price-Woods Chester County happenings. Thank you Liaison Committee for keeping us informed with other societies activities in Fairfield & Chester Counties.

Please continue to send us an email letting us know your feedback or items you would like us to discuss at Board meetings or see in our upcoming newsletters. Local members thank you and please continue to come and give us a hand as you can.

Thank you once again everybody, for your patience with us and your many ways of support for our/your society!

Humbly in your service, Eddie

#### **KITH and KIN**

Submitted by Pelham Lyles

If you could see your ancestors all standing in a row,  
 Would you be proud of them or not,  
 or don't you really know.  
 Some strange discoveries are made in climbing family trees,  
 And some of them you know,  
 Do not particularly please.  
 If you could see you ancestors all standing in a row,  
 There might be some of them perhaps  
 You wouldn't care to know.  
 But there's another question which requires a different view,  
 If you could meet your ancestors  
 Would they be proud of you.  
 Author Unknown

## MISSION STATEMENT

The mission of the Fairfield County Society is to:

- promote genealogy through education of its members and the general public;
- improve access to genealogical information in Fairfield County by maintaining an educational research center;
- foster collaboration among members;
- assist those researching their Fairfield County ancestors;
- conduct periodic educational programs and conferences to explore cultural, genealogical, and historical topics;
- disseminate cultural, genealogical, historical and biographical information to members and to the general public.

Thank you for your support in helping us in meeting our mission:

- Your time volunteered for various duties often behind the scenes to help in keeping members and others informed: researching requests, documenting cemeteries, producing informational programs, producing society newsletters, documenting meetings, sending correspondence and emails, updating other social media (FACEBOOK, website);
- Your monetary support by way of memberships, gifts and donations helps defer any of our costs to enable the society to make available in multiple venues information about the families of Fairfield County;

Your suggestions, constructive feedback, prayers and words of encouragement, all will be very much appreciated!

We are a 501-C3 non-profit organization, all donations will be acknowledged and will be tax deductible. If you would like to give your support monetarily in helping us meet our mission, there are several ways:

- send a check to FCGS, PO Box 93, Winnsboro, SC 29180-0093,
- donate online by way of our [Square Online Store](#),
- donate online by way of our [GoFundMe Page](#).

We appreciate your support!

Some other areas of support; contributions to the Resource & Research Library Collection:

- Any Family Information, Family Books or Scrapbooks
- Published Books such as:
  - Jean (John) Gaston Genealogy CD - \$35.00
  - Colonial Families of the United States of America [7 vols.] - \$450.00
  - Colonial Families of the United States of America, Volume I - \$70.00
  - Colonial Families of the United States of America, Volume II - \$85.00
  - Colonial Families of the United States of America, Volume III - \$70.00
  - Colonial Families of the United States of America, Volume IV - \$65.00
  - Colonial Families of the United States of America, Volume V - \$65.00
  - Colonial Families of the United States of America, Volume VI - \$60.00
  - Colonial Families of the United States of America, Volume VII - \$60.00
- EAS Library Book Anti-theft security system with tags - \$500.00
- Microfilm Reader/[Printer](#) Project - estimate \$9,800.00
- Large Map/Book Friendly Scanner Project – estimate \$6,500.00
- Smaller Book Friendly Scanners – estimate \$700.00 to \$2,000.00
- **Volunteers always needed**

All volunteers are trained and spend on-the-job time with a trained volunteer. The research rooms are small, comfortable and easily accessible. If you can give even three hours a month, please let us know!

**MEETINGS/EVENTS/ANNOUNCEMENTS/DATES TO REMEMBER**

We are pleased to announce the dates for our monthly programs and meetings. Meetings are normally held in the Fairfield County Resource & Research Library, 2<sup>nd</sup> floor of the Fairfield County Museum located at 231 S. Congress Street, Winnsboro, SC. **Please check the announcement page on our web site for more information.** (For those without email addresses, announcements will be mailed to you.)

**September, 2016**

Workshop on Saving Family Stories  
SC State Library on Senate Street, Columbia, SC  
More Info TBA

**Sunday, November 20, 2016** at 1:00 PM, lunch included  
Fairfield County Genealogy Society Annual Business Meeting  
+ Report on StoryCorp  
More Info TBA

**Sunday, December 4, 2016** at 4:30 PM-7:30 PM, light refreshments  
Christmas Gala  
Fairfield County Museum - Historical Society - Genealogy Society - Winnsboro Garden Club  
Fairfield County Museum  
231 South Congress Street, Winnsboro, SC 29180  
More Info TBA

For more information, please contact:

Frances Lee O'Neal at email: francesleeoneal@gmail.com or call (803) 635-3027 (leaving a message)

**2016-2017 Genealogy Conference Announcements / Reminders****Federation of Genealogical Societies Conference 2016**

August 31 - September 3, 2016 Springfield, Illinois



[Conference Information](#)

**36th IAJGS International Conference on Jewish Genealogy**

August 7-12, 2016 ♦ Seattle, Washington

Local Host: Jewish Genealogical Society of Washington State

[Conference Information](#)



**Great Canadian Genealogy Summit**

October 21 - 23, 2016 - Courtyard Marriott - Brampton, Ontario, Canada

Early Bird Pricing Ends Soon

[Conference Information](#)

**Old Zion St. Paul  
Halsellville Cemetery  
Association (OZSPHCA)**

Sixth (6th) Annual Old Zion Revival Reunion/Camp Meeting  
Sunday, September 18, 2016 3:00 P.M.

2223 West End Road, Chester, South Carolina 29706

Contact: [Janie Woods](mailto:Janie.Woods@allmifaith@yahoo.com) [allmifaith@yahoo.com]

**SALT LAKE INSTITUTE OF GENEALOGY**

**Elevate Your Genealogical Education to New Heights**

LEARN	OBTAIN	NETWORK	CONSULT	RESEARCH
from the field's top educators	in-depth instruction	with respected experts	with successful researchers	at the Family History Library

**SLIG**

- Advanced Genealogical Methods
- The Family History Law Library
- Taking Your Research to the Next Level
- Diving Deeper into New England
- Virginia from the Colonial Period to the Civil War: Her Records, Her People, Her Laws
- Researching in Washington, D.C., without Leaving Home
- Utilizing a Full Array of Sources for Researching Your Norwegian, Danish, and Icelandic Ancestors
- Settlers in the New World and Immigrants to a New Nation: Researching Ancestors from Overseas
- DNA Boot Camp: Practical Application
- Refining Internet and Digital Skills for Genealogy
- Adding Social History to Your Genealogy
- You be the Judge: A Practicum Using Standards to Evaluate Genealogical Work
- The Coaching Lab: Forensic Genealogy from Inquiry to Affidavit
- Advanced Evidence Analysis Practicum

Speakers:

- Thomas W. Jones, PhD, CG, CGL, FASG, FUGA, FNGS
- Judy G. Russell, JD, CG, CGL and Richard G. Sayre, CG, CGL, FUGA
- Paula Stuart-Warren, CG, FUGA, FMGS
- D. Joshua Taylor MA, MLS
- Barbara Vines Little, CG, FNGS, FVGS
- Pamela Boyer Sayre, CG, CGL, FUGA
- Elaine Hasleton, AG and Jeffrey M. Svare, AG
- John Philip Colletta, PhD, FUGA
- CeCe Moore
- Cyndi Ingle
- Gena Philibert-Ortega, MA, MAR
- Jeanne Larzalere Bloom, CG
- Catherine B. W. Desmarais, CG and Amber Goodpaster Tauscher
- Angela Packer McGhie, CG

**January 22-27, 2017**  
Registration opens July 9, 2016, 9:00 AM MDT  
[SLIG.ugagenealogy.org](http://SLIG.ugagenealogy.org)



-- For Immediate Release --  
Elevating Genealogical Education  
Salt Lake Institute of Genealogy

The Salt Lake Institute of Genealogy is pleased to announce that several scholarship opportunities are available for students planning to attend the Salt Lake Institute of Genealogy (SLIG) in January 2017.

**SLIG Jimmy B. Parker Scholarship – Deadline June 1, 2016**

Named in honor of Jimmy B. Parker, whose legacy of service to the genealogical community covered more than 50 years, this full-tuition scholarship will be awarded to an individual who has “demonstrated commitment to genealogical excellence and community involvement.”

**ASG Scholar Award, American Society of Genealogists – Deadline August 31, 2016**

This award provides “financial assistance for a developing scholar to attend one of five academic programs in American genealogy.”

**The Genealogy Fairy – Genealogy Grants Program – Awarded monthly**

This program, created by Thomas MacEntee, gives “back to the genealogy community through a series of grants to organizations and individuals . . .” Awards up to \$500 are given for qualifying projects, including genealogy continuing education programs.

**New SLIG Scholarship Fund – Deadline October 1, 2016**

This fund, opened at SLIG 2016, was created to enhance scholarship opportunities for SLIG students. This year’s award will provide partial tuition to a transitional genealogist attending an institute for the first time. Further details about scholarship opportunities may be found at [slig.ugagenealogy.org](http://slig.ugagenealogy.org). The 22nd annual institute will be held at the Hilton Salt Lake City Center hotel, January 22-27, 2017. Fourteen courses of in-depth study on a wide array of genealogical topics, including methodology, geographical specialties, special topics, and technology are being offered to help students “elevate [their] genealogical education to new heights”! All courses are taught at an intermediate to advanced level; detailed course outlines and prerequisites will be posted online as they become available. Registration fees include selection of the course of choice (based on availability at the time of registration), participation in special events such as the reception and banquet, networking opportunities, and time to research at the nearby Family History Library.

Registration opens July 9, 2016 at 9:00 am MDT.

Further information may be found at [slig.ugagenealogy.org](http://slig.ugagenealogy.org).

Contact: Peg A. Ivanyo, Director Salt Lake Institute of Genealogy  
[director@slig.ugagenealogy.org](mailto:director@slig.ugagenealogy.org) 801-515-6644

Mary Jane Saylor, Marketing Coordinator, [marketing@slig.ugagenealogy.org](mailto:marketing@slig.ugagenealogy.org)



News Release  
20 JUNE 2016 - SALT LAKE CITY

## Historic Freedmen's Bureau Project Completed

Nearly 2 million Civil War-era records indexed



“Now that the names are indexed, we will focus our efforts on teaching African Americans how to search the new digital records to discover and reunite with their families,” said Thom Reed, marketing manager of [FamilySearch](#), the largest genealogy organization in the world, which is sponsored by The Church of Jesus Christ of Latter-day Saints. FamilySearch has announced completion of the [Freedmen’s Bureau Project](#), indexing the names of millions of African Americans collected directly following emancipation.

The unprecedented [indexing](#) effort will allow African Americans to digitally search for their ancestors who were previously lost to history. The project was completed almost a year to the day after it was announced in a nationwide news conference at the California African American Museum on the 150th anniversary of Juneteenth, the celebration of Emancipation Day.



### [Freemen's Bureau](#)

Over the past year, about 19,000 volunteers participated in the project across the U.S. and Canada to extract nearly 1.8 million names of former slaves and immigrants from Civil War-era records.

Key to the project's success were the [Afro-American Historical and Genealogical Society's](#) (AAHGS) nationwide chapters, the Smithsonian and local Mormon congregations who partnered in over 100 indexing events to bring the project to a successful conclusion.

FamilySearch also partnered with [HISTORY®](#) in May to give the project a final push through a social media campaign to coincide with the premiere of the television series "Roots."

"In addition to our valuable partners, the project was embraced by dedicated genealogists, religious groups, universities and even was the focus of Eagle Scout projects," added Reed. "We all sensed an urgency to bring this important chapter in history to life and shine a light on this courageous generation of African Americans."

William Durant from the AAHGS Metro Atlanta Chapter said, "Indexing Freedmen's Bureau records puts you 'up close and personal' with ancestors and their struggles to begin life anew after slavery. It helps prepare you for your own research and saves time because you become familiar with the records, their format and wording, and [you] already know where to look for names."

The project's completion coincides with the September 2016 opening of the Smithsonian [National Museum of African American History and Culture](#) (NMAAHC) in Washington, D.C. A symbolic handover of the records will take place later this year. At that time, all of the records will also be available to the public to search online at no cost.

"The genealogical community is fully embracing these records," said Hollis Gentry, genealogy specialist at NMAAHC. "You'll find African American genealogists are quite excited about the Freedmen's Bureau Project. It offers a tremendous potential for them to find their ancestors in this large group of federal records that may bridge the gap between freedom and slavery in the records."

"The Freedmen's Bureau Project will change the very fabric of genealogy for African Americans," said Sherri Camp, president of the Afro-American Historical and Genealogical Society.

The Freedmen's Bureau, organized under an 1865 Congressional order at the conclusion of the Civil War, offered assistance to freed slaves. Handwritten records of these transactions include records such as marriage registers, hospital or patient registers, educational efforts, census lists, labor contracts and indenture or apprenticeship papers and others. The records were compiled in 15 states and the District of Columbia.

Although the project is completed, it will be few more months before all of the records will be available to the public because they still need to go through an arbitration process.

"To ensure the accuracy of the indexed information, two volunteers index each document. Any differences between the entries of these two volunteers are reviewed by a third, experienced volunteer called an arbitrator," explained Michael Judson of FamilySearch. "The arbitrator chooses the correct indexed data or adds their own information when neither appears to be correct."

Project organizers report that even more records have been discovered as a result of the original indexing project. The additional records will be available for indexing on [DiscoverFreedmen.org](http://DiscoverFreedmen.org). Once completed, they too will be added to the collection at the Smithsonian and will be available online.

“One of our key beliefs is that our families can be linked forever and that knowing the sacrifices, the joys and the paths our ancestors trod helps us to know who we are and what we can accomplish,” said [Elder D. Todd Christofferson](#) of the Church’s [Quorum of the Twelve Apostles](#), who spoke a year ago at a news conference in Los Angeles to launch the Freedmen’s Bureau Project.

---

The Fairfield Genealogy Society wants to mention that our Fairfield Central High School students and the local Church of Jesus Christ of Latter-day Saints were involved with this indexing of the Freedmen’s Bureau Project.

### **A NOBLE AND GALLANT SOLDIER TO THE LAST**

The Story of Heroic Deeds of John B. McGraw— A Young Carolinian who Died in the Last Battle

*Messrs. Editors:* Will you kindly publish the following clipping from the Greenville News. They will furnish interesting information to the few in the county who remember John Bunyan McGraw. He was the son of the late Rev. Marshall McGraw and a native of our county. In his early youth, nearly fifty years now, he essayed his fortune in other lands, and I have lost sight of him, but I retain a lively recollection of him as one of my favorite schoolmates. It is highly gratifying to me to learn that in his brief career he gave such a good account of himself.

Hayne McMeekin

While Chief Kennedy was in Shreveport, La., a few days ago, he made the acquaintance of Capt. W. F. Dewing, who commanded Co. A., Austin’s Battalion of Louisiana troops. In a conversation, Captain Dewing alluded to the fact that he had in his command a young South Carolinian, John B. McGraw, who joined the Continental Guards in 1861.

He spoke of McGraw as a man of enthusiastic courage, seeking the front and always in gleeful spirits when in most dangerous positions. He said he never knew a braver man, one so cool and it was the talk of the company that McGraw never threw away a shot. He aimed his gun with care as if shooting at a squirrel and every shot told, for it was always said that when McGraw fired, one of the enemy fell.

McGraw was something of a fatalist. One night sitting by the camp fire, he sat smoking his pipe. He seemed to be looking away off apparently gazing at nothing – just thinking. Taking his pipe from his mouth, he turned and said:

“Captain Dewing, I am going to fight through this war, will not get a wound or scratch; but when the end comes, when the last battle is fought and the thing is over, when you and these gallant boys will be ready to start to meet your wives, mothers and sweet hearts, the roll will be short, at least one man, and I am that man. I saw it all tonight.”

He quietly arose, knocked the ashes out of his pipe, went a few yards from the fire, laid down, and in a few minutes was asleep.

His prediction was correct. At the closing of the war he was killed at the Spanish Fort at Mobile, Alabama.

Captain Dewing, with the remnant of his command, returned to their mothers, wives and sweethearts, but the young South Carolinian sleeps far away from home and loved ones.

“A noble and gallant soldier from first to last” said Captain Dewing.

Captain Dewing said that McGraw enlisted in New Orleans in 1861 and was from Columbia, South Carolina.

Any relatives of McGraw can learn all the particulars of his army life and death, by writing to Captain W. T. Dewing, Shreveport, La., who buried him and can point out his grave.

To the editors of the Greenville News: In your issue of Saturday, the 3<sup>rd</sup>, my attention was called to an account given of the death of J. B. McGraw, from Columbia, S. C. Bunyan McGraw, as he was called, was born, reared and educated near Horeb Church, in Fairfield, about twelve miles southwest from Winnsboro. He was the only son of the Rev. Marshall McGraw, of hard-shell Baptist persuasion, and was educated by Jeremiah McCarthy, a noted country school teacher in that day and time.

I have no doubt but that he can be remembered by Capt. Hayne McMeekin, Washington Mason, Robt. Jennings and others, who were his school mates.

Many years ago, the writer of this, left school and went with him to Buena Vista, Chickasaw County, Mississippi. He was at that time principal of an academy, at which were educated some of the leading men of Mississippi today. Judge Thomas Buchanan, Col. A. J. Pulliam and others were among his pupils.

Several years of my early life were spent with him, and I have never met a more kind, gentle or noble spirit than his. I did not know what had become of him, until I saw the published account of his death; and it is a satisfaction to his friends to learn of his gallant life and death.

Captain Kennedy says that this commanding officer refers to his memory even to this day with tears. – Greenville News

#### **From the February 13, 1857 Issue of the Memphis Daily Appeal**

Article submitted by Jon Davis

Mr. John Cathcart, a merchant from Winnsboro, South Carolina, was stabbed in Charleston on the 5<sup>th</sup> inst., and it is feared the wound will prove fatal.

#### **From the February 14, 1894 Issue of the Newberry Herald and News**

Article submitted by Jon Davis

### **“WELL THAT SETTLES IT”**

#### **Major Woodward Enquires What Representative Johnson Intends to do About It.**

Columbia, February 7 – Major W. T. Woodward, of Rockton, and Representative Johnson, of Winnsboro, came near having a shooting match here today as a result of a political controversy in a newspaper. Johnson sent a note to Woodward, who was at dinner, saying that he was wanted, and Woodward responded. Johnson asked for an apology and Woodward told him he was not making apologies today. Johnson stood with his hand in his overcoat pockets and when he insisted on an apology, Woodward quickly jerked a pistol, stuck the muzzle in Johnson’s face and said: “What are you going to do about it?”

Johnson replied: “Nothing” and Woodward walked away, saying: “Well, that settles it.”

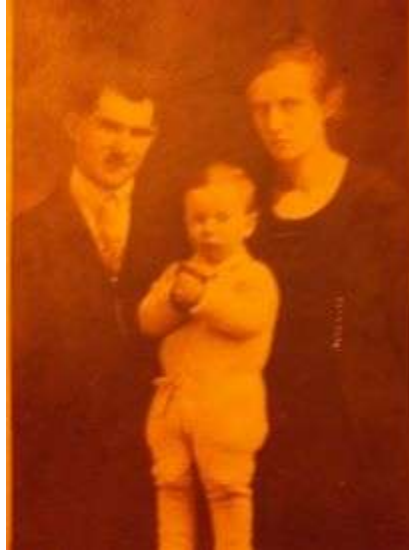
----- 95 Years Ago -----

### Sgt. Fritz Max Kreutzer, US Army

Story submitted by Pelham Lyles



Fritz Max Kreutzer and  
Maggie Smith Kreutzer - 1917



Fritz, Maggie and  
Fritz Max Kreutzer, Jr. - 1920

Sgt. First Class Fritz Max Kreutzer  
1917



*"They hurried home and told their father who returned to the lake with them and found that it was the body of a white man dressed in soldier's clothes. The man had been shot through the heart, the bullet having passed clear through the body. There was also a bullet hole in the back of the neck. His hands were fastened together with wire and an anvil was wired around his neck." From the Winnsboro, SC News and Herald March 31, 1921*

### MURDER IN MOSSY DALE

By Charles W. Smith

According to one witness he was just "Too German for Fairfield County" in 1920. According to others he was a notorious wife-beater, although there is no evidence to corroborate the claim. What is known is that on Christmas Eve 1920 Sgt. Fritz Max Kreutzer, a naturalized American citizen born in Germany who became a wartime Sergeant in the US Army during WWI, was invited to a Christmas party in the Mossy Dale Community of Fairfield County, South Carolina. What he did not know was that there was to be no party that evening. He had been invited by someone whom he obviously trusted to dress in his military uniform for the occasion of his own execution. At some point during that Christmas Eve he was abducted by a large group of local men, bound with a plow line and shot through the heart and neck. An anvil was wired to his neck before his body was dropped into the lake near Brown's Bridge on Little River near the Richland County line. It is not known whether Kreutzer was alive or dead at the time that he was dropped into the lake.

His body was discovered three months later on March 26, 1921 by Fred and Walker Leitner, local boys who were fishing in the lake. They reported the body to their father and who joined them in reporting the matter to the Magistrate and to the Coroner in Winnsboro. The next day, March 27, 1921, Coroner J.H. Gibson issued a warrant for six men to participate in an inquest into the death of the person found

in the lake at Brown's Bridge. This procedure normally required fourteen men, but for some reason Gibson reduced the number to just six. The warrant stated that the inquest would be held at Brown's Bridge, but the Coroner's report indicates that it was held at T.W. Mann's store on March 27th between 4 and 5 o'clock in the afternoon. The six men determined that the decedent "*...came to his death by pistol shot wounds through the heart and anvil attached to body by unknown parties and buried in lake at Brown's Bridge*".

Dr. Amos C. Estes, M.D. examined the body and found it to be dressed in full military uniform and partially decomposed. The face was decomposed beyond recognition. Underwear worn by the decedent bore the initials F.M.K. Tattoos on the forearms showed an image of the Statue of Liberty on the left and a heart and anchor superimposed over a soldier on the right. Dr. Estes was particularly intentional in describing the soldier in the tattoo as being "German".

According to one witness the body was brought to Bethel Methodist church where it was identified by Sgt. Kreutzer's wife as being that of her husband. Shortly afterwards the body was interred under cover of darkness in the church cemetery where it remained in an unmarked grave for the next eighty-three years.

Three statements were taken by Coroner J. H. Gibson during the 1921 inquest; one from Mrs. Kreutzer and one each from the Leitner boys who discovered the body. Mrs. Kreutzer stated that her husband was known to place his initials on his underwear like the ones found on the body. She was also asked if her husband had made any threats to anybody. She responded that he had made a threat to her on the evening of December 21, 1920 when he came home from working at the Mill. She reported that he had told her that he would "blow her brains out." She stated that she did not know why he would have made this threat. She also stated that he had no enemies who were known to her and that he had had a pistol in his possession when he had left home on the morning of December 22, 1920. Interestingly enough the jurors selected by Gibson to conduct the inquest specifically state that the death was from "pistol wounds"...not the more generic "gunshot wounds". No attempt was ever made to recover the murder weapon, which was likely Sgt. Kreutzer's own pistol...and is likely still at the bottom of the lake.

Given these statements, why is it that for ninety-three years no one has ever asked the obvious questions about this case...who did it and why? The picture that is coming into view as a result of these statements and new information from witnesses is that everyone involved in the inquest already knew who did it...and why.

The first witness I spoke to about this told me as soon as I mentioned the name Kreutzer that what had happened to Fritz Kreutzer was the worst thing that had ever happened in Fairfield County. I asked why that was the case and was told point blank that Kreutzer was NOT a wife-beater and that the reason he was killed was because he was "too German for Fairfield County" in 1920. The wife-beater story was concocted after the murder by those involved to shield themselves from prosecution. Family members were told over the years that the local people were convinced that Kreutzer was a German spy... something that had never seemed of concern to Kreutzer's Commanding Officer during the six years that he served in the US Army or during the time he fought for the US in Germany. Kreutzer received an honorable discharge from the US Army at Camp Jackson in Columbia in late April of 1920. By the end of December 1920 he was dead at the hands of a mob.

Another person with peculiar knowledge of the incident stated in 1999 that the anvil that had been tied around Kreutzer's neck could still be found in the workshop of the family who had been most responsible for the plot to murder the Sergeant. This person also stated that the one individual most

associated with the murder was shortly thereafter forced to leave South Carolina and that he had died a gruesome and untimely death not long after leaving South Carolina. Others involved were mentioned who had also met untimely deaths.

What is clear in this case is that Kreutzer's German-ness was a major factor in how people in his community viewed him. Dr. Estes, who examined the body, stated that a tattoo on the man's forearm was that of a "German soldier". He makes no statement as to how he came to that conclusion and in fact had difficulty with the wording of his statement about it, scratched out his first attempt at describing the tattoo and overwrote it. Also interesting is that while Kreutzer had been in the US since 1909 serving six years in the US Army from 1914-1920, he did not become a naturalized U.S. citizen until 1917 during WWI. On his Naturalization Petition, the tattoo on his right forearm was described in detail. Nothing on the petition indicated anything "German" about the soldier in the tattoo and there was absolutely no concern about it from Federal officials at the time that he became a U.S. citizen. ...a time when we were still at war with Germany.

Also interesting is that the Statue of Liberty tattoo on his left forearm was not present at the time that he petitioned for naturalization in 1917. It was added later. He seems to have been very proud to have become an American citizen in September of 1917. It is also important to realize that Sgt. Kreutzer probably spoke with a German accent that was different from the speech of his neighbors. This lynching occurred during the time when the French and other like-minded former US allies felt that Germany should have been severely punished for having caused "The Great War". If there were people in the Mossy Dale community who felt this way, Kreutzer would have been a constant reminder that Germany "got off light".

The fact that Kreutzer was a US Army officer was apparently something deemed worthy of mockery, as indicated by the fact that the person who invited Kreutzer to his own execution under the guise of inviting him to a Christmas party had specifically asked him to wear his full military uniform...and then murdered him in it while his hands were tied with a plow line. They clearly felt that Kreutzer's German-ness was a desecration of the US Army uniform or they would not have asked him to wear it for his execution.

One major inconsistency in the Coroner's report is the indication given by Mrs. Kreutzer that she had last seen her husband on the morning of December 22, 1920. An article in the News and Herald on March 31, 1921 clearly states that Kreutzer was seen on Christmas Eve 1920 two days after Mrs. Kreutzer said she had last seen him. Did he really go AWOL and totally unnoticed and unreported in Winnsboro for two entire days? Did he not show up for work at the mill? Or was Mrs. Kreutzer covering something up?

If wife-beating was a truthful factor in the lynching of Fritz Max Kreutzer, why is it NEVER mentioned before, during or after the incident? Given the later charges that her husband had been murdered because he was a known wife-beater, why did Mrs. Kreutzer never mention his alleged wife-beating reputation to the Coroner? She did not hesitate to tell the Coroner that he had threatened her on December 21, 1921. If there was enough of a groundswell in the community against this alleged wife-beater to rally a group of townspeople to murder Kreutzer, wouldn't you think the victim of the wife-beating would mention the abuse in her statement?

The townspeople had only known him for eight months. Mrs. Kreutzer says nothing about any prior abuse incident beyond the alleged threat made to her on December 21, 1920.

**Other questions of interest would be:**

Why did the Coroner cut the number of men needed for the inquest from the standard 14 to 6 when the body was reported at the lake? How were the members of the inquest panel chosen and why? The foreman was E.G. Fridy and the other members were J. M. Jones, L. A. Harman, E. S. Clark, E. H. Vann and T. W. Mann. What was special about them?

It was clear that if Kreutzer told his wife on December 21, 1920 that he would "blow her head off", that he was angry about something. She alleges that he left the next morning armed with a pistol, which indicates he was also fearful of something other than what he faced at home...a place which he shared with his wife and her parents. How could he have been a wife-beater while living under the same roof with his wife's parents?

At the time of this incident it had only been five years since a vigilante mob had ambushed the Fairfield County Sheriff and his deputies who were protecting a black prisoner in their custody for a trial. In the end, Sheriff Adam D. Hood, rural policeman Rawley Boulware, vigilante Clyde Isenhower and prisoner Jules Smith were all killed. Deputy Sheriffs R. B. Beckham, R. L. Kelly and Earl Stevenson and the Rev. Mr. Morrison and D. F. Smith all lay wounded. Lynching's were common enough in Fairfield County at this time that it had even become acceptable to murder the Sheriff if need be.

What was it in the eyes of the white citizens there that made Sgt. Kreutzer "less than" other white people of the community and worthy of extreme mockery, torture and murder? I believe that he WAS simply too German for Fairfield County in 1920...which is pretty ironic considering the Germanic last names of so many families in this area and Kreutzer's service to the US Army AGAINST his native Germany.

The more important question today is what happens to the soul of a community when it supports lawless citizens in the commission of a vicious hate crime? What does it do to a community when that community decides as a group to participate in the cover up of that crime for the next 93 years? Only the people of Mossy Dale can answer that question, but I'm guessing that it has not been a particularly positive experience.

I hope those who read this will decide that it's time for Mossy Dale to begin healing this wound. Christmas Eve at Bethel Church on the 93rd anniversary of the lynching might be the right place to start. Fritz Max Kreutzer, a son, husband, father and an American by choice deserved better than this from us in 1920...and he deserves better from us now.

His service to our country deserves to be honored and the atrocity that was committed against him should be etched in the memory of all of us as a reminder of how far from justice and compassion we can be led as a community when prejudice and bigotry are allowed to prevail.

\*\*\*\*\*

If you care to pay Sgt. Fritz Max Kreutzer a visit, you'll find him in Bethel Churchyard in Fairfield County, South Carolina along the wall to the right as you face into the cemetery about three quarters of the way to the back of the property. His son, grandson, granddaughter and widow are buried nearby.

*Charlie Smith is the grand-nephew of Fritz Max Kreutzer, Jr. and Vivian LaBorde Smith Kruetzer. He is a social justice advocate and Realtor in Charleston, South Carolina*

I have long been in touch with members of our family who were descendants of John Herman Kinsler's slaves...and likely JHK himself. We have had a great friendship and talk often. I think Brenda Kinsler might have actually come up there a time or two. She is a school principal from DC.



I haven't heard anything more on Kreutzer. The Sheriff was supposed to get back to me, but I suspect the file went in the trash. I would like very much to know if there was any record of Kreutzer being in the Sheriff's custody from December 22-25, 1920. I was told that the Sheriff had handed him over to a mob of Free Masons. Apparently the actual site of the lynching is still in existence. The Bethel Pond story proved to be incorrect. Ben Hornsby said it was another pond that is still referred to as Kreutzer's pond. I also heard that Kreutzer's brother came to Winnsboro from Germany to find out what had happened to his brother and actually probably stayed with the people who had participated in the lynching. Weird stuff!

### Family Stories and Articles in the FCGS Newsletters

Newsletter	Family Story or Article
2016 1 <sup>st</sup> Qtr	Sgt. Webster Anderson
2016 1 <sup>st</sup> Qtr	Early Scots-Irish Families In Back Country SC
2016 1 <sup>st</sup> Qtr	Pedigree Chart – Robert George Marshall
2016 1 <sup>st</sup> Qtr	Pedigree Chart – Isabel Ernestine Stevenson
2016 1 <sup>st</sup> Qtr	Black Confederates of the Civil War from Fairfield County
1999 1 <sup>st</sup> Qtr	Confederates in Brazil
More to come	

### Fairfield County Genealogy Society Contact Information

Mail:	Fairfield County Genealogy Society P.O. Box 93 Winnsboro, SC 29180-0093
Location:	Fairfield County Museum (2nd Floor) 231 S. Congress St. Winnsboro, SC
Email:	<a href="mailto:fairfieldgenealogy@truvista.net">fairfieldgenealogy@truvista.net</a>
Phone:	(803) 635-9811
Fax:	(803) 815-9811
Website:	<a href="http://www.fairfieldgenealogical.org">www.fairfieldgenealogical.org</a>
Facebook:	<a href="#">Fairfield County Genealogy Society</a>
Library Hours:	Tuesday – Friday 10:00AM-5:00PM Closed for Dinner/Lunch (usually 12:30PM-1:30PM) Closed Saturday, Sunday & Monday Volunteer staffed, please call ahead

## News at the Fairfield County Historical Museum:

### Display of Daguerreotypes, Tintypes, Cartes de Visite, Ambrotypes, Stereopticon views and other Nineteenth Century Photographic Images

Fairfield County Museum volunteer Ed Gates has assembled downstairs several display cases of 19<sup>th</sup> and early 20<sup>th</sup> Century photographic images from the museum archives and other private collections. If you ever wondered why portrait sitters from early times look so uncomfortably stiff, this is your opportunity to learn about the equipment and techniques that debuted on the scene after the heralded discoveries that “captured the sun” on chemically coated surfaces.

Techniques for “fixing” images that have been projected through a lens have been around since the early 1800s. Visitors may be interested in sharing copies of their own family heirlooms or learning how to care for old daguerreotypes and other photographs.

An ongoing exhibit on second floor is **The Country Store**. Nearly two hundred objects and documents are featured in the exhibit which focuses on several late 19<sup>th</sup> to early 20<sup>th</sup> Century mercantile stores in Fairfield County.

Mr. Isaac C. Thomas, whose extant store is now converted to the Thomas Tea Room in Ridgeway, also served farmers as a cotton merchant and there are many interesting receipts and ledger entries for purchases, charges, and bills for service.

The Kennedy Mercantile and Banking Company, founded by George L. Kennedy, and later known as G.L. Kennedy & Co., was located in Blackstock. The original cotton scale, stock certificates, and miscellaneous memorabilia and building hardware from the Kennedy store are displayed.

The Shivar Springs Company was established in the early 1900s by Nathaniel Frank Shivar in the Shelton Community. A wide variety of bottles from Shelton's Shiver Springs are part of the display. Bottle collectors will enjoy knowing more about this old bottling company, remnants of which still stand abandoned in the woods around the Broad River ghost town of Shelton.

The pot-bellied stove from Winnsboro's J.M. Harden hardware store on Congress St. is a centerpiece of the exhibit. The stove was a focal point of this turn-of-the-century store, drawing shoppers on a cold day to its warmth, to share news or play a game of checkers. The store sold coffins and eventually evolved into the Harden Funeral Home.

A work of art is the mahogany and polished brass cash register from the J. M. Beatty store, located in the building now occupied by Carolina Furniture Company.

Visitors are invited to view both exhibits during regular Museum hours, Monday through Friday from 10:00 to 5:00. (The Museum is closed for lunch between 12:30 and 1:30.)

Please mark Dec. 4 on your calendars for the Museum's annual **Christmas Open House** at its 231 S. Congress St. location in Winnsboro on December 6 from 4 to 6 PM. The museum is decorated in period finery by local garden clubs and local musical talent is featured in the parlor around the 1854 rosewood piano.

From the July 3, 1866 Issue of The Tri-Weekly News-Winnsboro, S. C.  
Contributed by Jon Davis

## Historical Sketches of Fairfield County

BY D. B. M'CREIGHT  
No. 2

When the Cherokee and Catawba Indians made the hills and valleys of Fairfield their hunting grounds, there was game of various kinds. Chief among the objects of their pursuit was the buffalo which spread over what are now bleak and barren grounds in herds. The Cherokees called the buffalo *yanasa*, "the very great bull" or the "Bull of God". From the hair of this animal the women manufactured a kind of cloth of great comfort and durability.

In 1760 a Mr. Graves, an old man, crossed the Wateree at Grave's Ford and formed a settlement in the present territory of Fairfield. One Reuben Harrison was one of the party; and as old man Graves had discovered tracks of buffalo in the paths leading up from the river into the woods, Harrison and some others in the pioneer party sallied forth in search of game, and were not long in securing three fat buffaloes. These were carried to camp, and skinned and cut up, and the pieces put upon logs to cool during the night. But as wolves abounded in the deep dense forests, and got a scent of the meat spread out, they too came in for spoils, and by morning a great deal of the game had disappeared. Pearson, in his manuscript, tells of one Mr. Bushby who lived to the age of one hundred and ten years, and who related that he had often seen, at one time, three thousand buffaloes on the Long Meadows of Little Rover.

(Have any of the readers of the Herald ever heard of any fossils remains being found in that section of the District)

It is difficult for us now to realize that we dwell where the buffalo was hunted by the wild Indian of the forest; and that the only weapon used were the bow and the spear. Ad all this hunting too was done afoot. Those pointed flints which are scattered here and there over our hills, and which are occasionally found to this day, could a tale unfold had they the gift of speech. Doubtless many of us have picked up one which had more than once been driven into the life-blood of some fleet or fierce denizen of the dark forest. They were used to point the arrow, but the arrows have all moulded into dust and left only the imperishable fling. How the Indian reduced such hard stone to the desirable shape, passes our comprehension.

But the nimble deer added to the list of game in the primitive days of this District. Herds of sixty or seventy head were visible all over the country, and so numerous did the first settlers in this section report them, that they could be seen at any time from their huts. The licks were favorite resorts for both buffalo and deer. These licks are not entirely forgotten yet. There is one not far from Winnsboro, towards the east, near the head waters of Indian Creek, a branch of Little Wateree Creek, and on land now owned by Mr. Jno. Wylie. The existence of the lick somewhere in that immediate quarter gave rise to the name of the little stream running nearby, that is "Lick Branch". For the benefit of the young it is well to say that these licks to which the wild animals resorted were salty places where they were found of licking their tongues on the clay to get a taste of the saline moisture.

But there were also bears, panthers, catamounts and wild cats found here. The beaver, the muskrat and the otter, the fox, opossum and raccoon abounded, all these except the beaver still being more or less found.

The bear afforded both sport and sustenance to the early English settlers. Bear's oil was highly prized by the aborigines, and both the warriors and the women kept their hair always shining with it. In preparing it for use the Indians performed it with sassafras and wild cinnamon. They also prepared it in

another way to be used as a healing ointment, and this they regarded as a sure remedy for strains, aches and old pains. The priests and prophets were inducted into office by the unction of bear's oil. They also anointed the bodies of living and dead with it.

Logan, in his History of Upper South Carolina, expresses the doubt that perhaps not one specimen of the bear can be found east of the Blue Ridge. But this is entirely a mistaken idea. Bears are much more numerous in the lower part of this State yet, than many persons suspect. It has only been a few weeks since we published in the News an account of a very large one killed on the Santee in Williamsburg District. The gentleman who bagged the monster bear is well known to the writer. The writer saw a part of another large bear that was killed on Black River in 1858, not before the old animal had killed and devoured several old sows, which he seemed always to prefer to the fatter shoats.

The wildcat was another common animal in this section in primitive days. Though a rare sight, if ever seen, here now, yet there are a great many in some parts of the State to this day. It is very destructive on young pigs, and with its long and powerful claws will tear a dog frightfully when brought to bay.

The beaver, though numerous once, has entirely disappeared. The history of this harmless animal is intimately associated with the advancement of industrial enterprise. What is more common, or used to be, than to see and hear of a "beaver Hat". Once the beaver existed in England, on the continent of Europe, in Asia, and all along the Atlantic slope of America. Unluckily for this ingenious animal, some began to use its fur for covering gentlemen's hats. With the spread of fashion kept pace the hunting of the beaver for his skin and fur. And not until the species had been exterminated in all the above countries, did the war upon the beaver cease. The remaining beavers which abound on the Pacific slope of America may thank the silk worm for drawing off the fire of civilization. The best fur however for hats and "beaver cloth", is taken from a species of beaver found in Chili, somewhat different in its characteristics from the beaver originally found in this country.

Twenty years ago, as many of the young men of Winnsboro may remember, there was a place called "Beaver Dam" not more than three quarters of a mile from town, down on the Aiken's Mill Branch, at the head of what as familiarly known as the "meadow field" – now the property of Mr. Charles Cathcart.

As one of the common sights long ago, it may be well to give a brief description of what a beaver dam is. When the beavers were about to construct a dam, which they did in June and July, they would assemble together, as many as two hundred sometimes. They live under the ground near the edge of the stream, and where the water is not subject to rising and falling, they build no dam. But as most streams do this, these colonies of workers generally found it necessary to build one. The first operation was to cut down a tree near the margin of a stream, and let it fall into the water. This cutting was done with their teeth. And they would cut through the trunk of one from twelve to fifteen inches in diameter. Upon this tree as a basis they would arrange other smaller trunks of trees, placing them one end on the upper side of it; and the other end down in the bottom of the stream. These would be arranged so as to form an inclined plane just as men build dams. All this frame work would then be filled in with clay, sand and muck, and patted down firmly with their paddle-shaped tails and their broad fore feet.

The Indians understood tanning the deer skins, as well, it appears, as the negroes in the low country do. That beautiful buck skin used so often by our merchants and watchmakers was not unknown to them. They used the brains of the deer to tan his skin, just as is done to this day in those parts of our State where this animal is found. It is a singular fact that the brain of any animal is sufficient to tan its own hide. Even the rat's skin can be made beautifully white and clear of all hair in five minutes, just by rubbing its brains over the flesh side, holding it for a few minutes before the fire, and then rubbing it briskly in the hands.

**CEMETERY COMMITTEE REPORTS**

**Jon Davis**

**Where in the World is Jesse Havis?**

A gravestone for Jesse Havis can be found in following three cemeteries:

**Bethel ARP Cemetery in Winnsboro**



**First United Methodist Church Cemetery in Winnsboro**



**Jesse Havis Cemetery next to Highway 200 northeast of Winnsboro**

Through the research of Ed Gates, a member of the Fairfield County Historical Society, the reason for the three gravestones has been uncovered. Jesse was buried in the Jesse Havis Cemetery. His gravestone was removed and used as a picnic table. When found, the original gravestone was placed in the Bethel ARP Cemetery for preservation. In 2015, his descendants along with the Fairfield County Historical Society had a marker made and placed where he was buried. Shortly after, a memorial marker was placed in the First United Methodist Church Cemetery.

**James Ashford Cemetery**

The Cemetery Committee is not only locating new cemeteries to document, but often return to cemeteries previously documented in an effort to check and see if any graves were missed and try to get better pictures. One of these is the James Ashford Cemetery. It was located and pictures of the gravestones taken several years ago. As can be seen by the picture, the cemetery is over grown with trees and vines and some of the wall has fallen over. We plan to return this winter when the serpents are dormant and resurvey the cemetery and get better pictures.

## Blizzard Cemetery



This cemetery is located in what was Fairfield County, but is now in Richland County. We need to thank Bill Bauer who got permission from the land owner and led the committee to the cemetery. It was encouraging to see that the land owner had cleaned the cemetery and placed railroad ties around it. The following are buried in the cemetery: Arthur Blizzard, October 18, 1847 – December 18, 1920; Elizabeth Blizzard, January 20, 1810 – February 26, 1891; John Blizzard, June 23, 1886 – December 9, 1914; Voluntine Blizzard, July 27, 1811 – February 28, 1889; Mary Jane Gladden, January 12, 1836 – August 8, 1910; Nicklos Gladden, February 24, 1843 – August 22, 1910 and several unknown graves

### Cemeteries that have been located and will be documented this winter

Jarvis Barnwell has again led us to two additional cemeteries, the Barber Cemetery and the Kiernahan Cemetery. The Barber Cemetery is a cemetery that has not previously been located or documented. The Kiernahan Cemetery was documented around 25 years ago but the location was not known and pictures of the gravestones are not available. These two cemeteries will be documented this winter once hunting season is over in January.

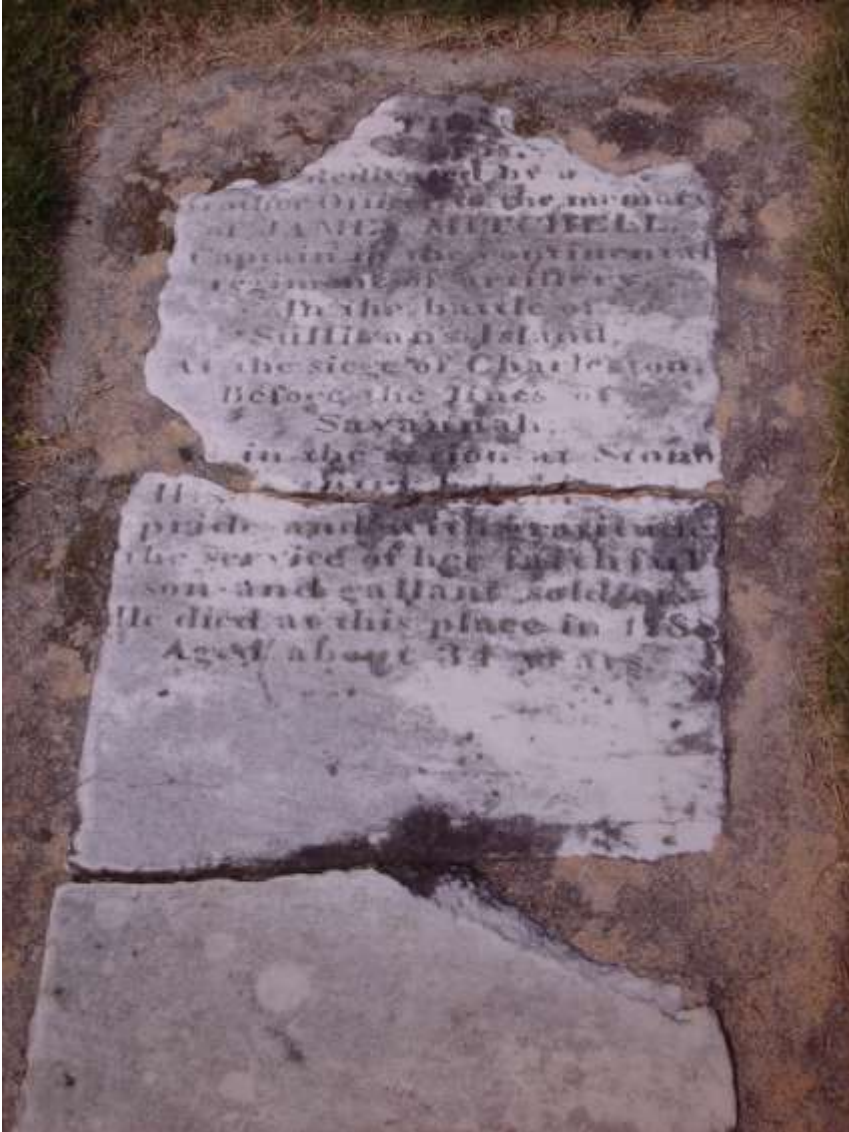
We place pictures we take on Findagrave. You can go that web site and see pictures or you can request a picture from our web site. As noted above we are constantly reviewing our pictures and trying to upgrade them.

### Obituary – Mr. Geo. Brown

Submitted by:

Charlie Smith

DEATH.—Mr. Geo. Brown, an old and respected citizen of the Rock City neighborhood, died on Saturday night after a long and painful sickness, with cancer of the face. His remains were buried on Sunday in the old Alston and McKinstry grave yard. He leaves a family all of whom are grown.



## Captain James Mitchell

### Tombstone

Revolutionary War  
Oaklawn Cemetery,  
Winnsboro, S.C.

From the October 27, 1887 Issue of the Newberry Herald and News  
Article submitted by Jon Davis

### A Fairfield County Man Badly Used Up In Atlanta

WINNSBORO, October 22 – Robert H. Means, of this county, went to the Piedmont Exposition at Atlanta. While sitting in the lobby of the Kimball House, a man sitting next of him asked him if he wanted a place to stay that night, as all the hotels were full. The man proposed to show him a place to sleep, and Means accompanied him. While walking up the stairs of the house to which they had gone, a drunken man came down, and when just above Means gave him a violent kick under the chin with his foot. Means, being somewhat under the influence of whisky, cursed the man severely, when he jerked out his knife and cut four long gashed in his throat, besides two others in his body. The man was not arrested. Means was taken to a drug store and his wounds were attended to. He is still in Atlanta in a precarious condition.



---

**REUNIONS/FAMILY CELEBRATIONS**

---

If you are planning a reunion or family event, please contact the Genealogy Room (803) 635-9811 or email [fairfieldgenealogy@truvista.com](mailto:fairfieldgenealogy@truvista.com). It would be our privilege to join you in the celebration of your family to assist future generations searching for answers to their family heritage. We set up a booth with research materials, various cemetery/marriage/death and other books from the Fairfield County area. Do you have questions or have you hit a brick wall in your research? Perhaps we can help you.

**Details of reunions can be found on our reunions page of our website.**

**2016 Qualls Family Reunion**

Friday, August 5 through Sunday, August 7

Embassy Suites Hotel, North Charleston, SC

Please bring a copy of your photos and documents to share or email them.

Be sure to write your name on the back of them as well as the people in the pictures, the date and place of the photo.

For Information Contact: by email: [Valeria Prophet](mailto:Valeria.Prophet@truvista.com), or by phone: (404) 358-2457

**2016 New Camp Welfare Tent Holders Camp Meeting**

Wednesday, August 17 through Sunday, August 28

New Camp Welfare Tent Holders, Camp Welfare Road, Fairfield County, SC

Please bring a copy of your photos and documents to share or mail them to Bertha.

Be sure to write your name on the back of them as well as the people in the pictures, the date and place of the photo.

For Information Contact: Bertha Boulware Gladden, P.O. Box 72, Great Falls, SC 29055. (803) 801-0657

**2016 Old Zion St Paul Halsellville Cemetery Association 6th Annual Reunion/Camp Meeting**

Sunday, September 18, 2016 - 3:00 PM

Old Zion St. Paul, Halsellville, 2231 West End, Chester, SC 29706

[Details](#) Call: (803) 581-1545 Email: [Jannie Price-Woods](mailto:Jannie.Price-Woods@truvista.com)

**Taylor - Gen. Edward Taylor Descendants Family Annual Reunion**

Saturday, September 26, 2015 - 1:00 PM - 3:00 PM

Charlie E. Taylor's Home, SC Hwy #215, North of Cool Branch Baptist Church, Feasterville Community

Details Email: [Eddie Killian](mailto:Eddie.Killian@truvista.com)

**Coleman, Feaster, Mobley Family Association Annual Reunion**

Friday, September 30, 2016 – Sunday, October 2, 2016

Feasterville Academy Grounds, SC Hwy #215, Feasterville

Details Email: [Eddie Killian](mailto:Eddie.Killian@truvista.com) or call: (803) 635-9811 (M-F, 10 AM-5:00 PM)

**Killian - "Pop" Claude Tresvan Killian Descendants Family Reunion**

Saturday, October 8, 2016 - Noon until

Pine Island Picnic Shelter, Lake Murray, Lexington, SC

Meal will be provided for \$8 adult & \$5 for children

Details Email: [Eddie Killian](mailto:Eddie.Killian@truvista.com) or call (803) 635-9811

---

Let us know about your reunion, we will be glad to post your reunion information for you on our web site.

---

## SOCIAL MEDIA COMMITTEE REPORTS

### 1. FAIRFIELD COUNTY GENEALOGY SOCIETY– WEB SITE

All web pages that are being made available for your viewing and use are not copyrighted. It's believed that the usage of any original work submittals contained within these web pages such as articles, compiling, photographs or graphics, conform to Fair US Doctrine & Copyright guidelines. Many thanks to Eddie Killian for his dedication and hard work keeping this updated!

Public Web Pages Updated: Announcement Page; Newsletter Page; Reunions Page; and By-Laws Page.

“Members Only” Web Pages or Information Added/Updated:

- Zoom Search Engine Fixed
- Books Page: added additional Mt. Zion College Yearbooks; added additional Sara Bolick Scrapbooks.
- Churches Pages: added Beaver Creek Baptist; added Bethsalem Presbyterian; added Concord Presbyterian; added Crooked Run Baptist; added Fairfield Baptist.
- Families Pages: added Carroll; added Hamiter; added Macon; added McKinstry; and added Turnipseed. (FYI: All of the “A” family files will be digitized very soon and will be added as soon as possible to the website.)
- Maps Pages: [Carolina Places](#) hosted by Rootsweb an Ancestry.com community; [SC ArchSite Public Web Map](#); and [ACME Mapper](#) by Google Maps.
- Microfilm Land Deeds Pages (by Ken Shelton): QQ, WW, AB, AC, AD are only ones remaining to be completed; added MM Old.
- Newsletter Archives Pages: 2<sup>nd</sup> Qtr. Newsletter added.
- Society Information Pages Updated: Meeting & Program Agendas; Meeting Minutes; Treasurer’s Reports; Membership.

### 2. FACEBOOK

Please check our Facebook page at <http://www.fairfieldgenealogysociety.org/> (Fairfield County Genealogy Society) and “like” us! This will enable us with monitoring and getting assistance from Facebook that will help us with presentations and better reporting. Thanks!

Note: You can only post your queries to the Fairfield County Genealogy Society email address: [fairfieldgenealogy@truvista.net](mailto:fairfieldgenealogy@truvista.net). **We do not monitor FACEBOOK for queries.**

### 3. NEWSLETTER CONTRIBUTIONS

#### **FROM OUR MEMBERS!**

**RECENT MEMBERS QUERIES AND ANSWERS YOU MAY BE ABLE TO HELP THEM OUT TOO, IF SO CONTACT US! WHEN SUBMITTING QUERIES, PLEASE PROVIDE AS MUCH INFORMATION AS POSSIBLE TO INCLUDE: YOUR NAME AND CONTACT INFORMATION, FULL NAMES OF PEOPLE YOU ARE RESEARCHING, BIRTH/DEATH/MARRIAGE DATES (DATES ARE VERY IMPORTANT!)**

Please email: [fairfieldgenealogy@truvista.net](mailto:fairfieldgenealogy@truvista.net) or U.S.P.S.: P.O. Box 93, Winnsboro, SC 29180.

4. **LINKEDIN** Open (Volunteer needed before FCGS will participate in this network.)

## From the DNA Committee Chair, James Walker Green III

### DNA TESTING

In regard to DNA testing, every male who has done autosomal DNA, whether at Ancestry.com, 23andMe, or Family Tree DNA (FTDNA), needs to do at least a Y-DNA37 test which is best done (and perhaps only done) at FTDNA.com. If you did your autosomal test at Ancestry.com before Jan. 2016, you can download your results from Ancestry.com then upload your results to FTDNA for free then unlock your FTDNA kit for \$39. That is a bargain since autosomal tests are generally \$99 + S&H. With the transfer, there is no S&H charge.

Once a male has his autosomal test (called Family Finder) at FTDNA, FTDNA will lower the price (in his kit) for Y-DNA37 from \$149 to \$139 which is \$10 off. If you did a transfer, you have no DNA at FTDNA so will be charged about \$12 for S&H added to the \$139. During sales Y-DNA37 (Y37) is only \$10 or \$20 off the regular price, so by doing Family Finder (FF) first, you do not need to wait for a sale unless you want to wait for a \$20 off sale. There should be a sale Labor Day or at any time now. If there is no summer sale & no Labor Day sale, the next sale will start at Thanksgiving & run to the end of the year. Not everything is on sale during sales, so waiting may not be worthwhile.

A male does Y do see which set of men of his surname he matches. Then only those men's genealogies are relevant. That saves you from working on irrelevant genealogies of that surname.

If you are female and interested in your maiden surname, you need to test a close male relative 1st with FF then Y37. You would do your father, his brothers, or one of your brothers. You would not do your son, because he has Y of you husband. Later you may want to do your husband if you are working on your children's ancestry. In selecting who to do Y37 on, select your paternal grandfather or his sibling. If all are dead, then do your father or one of his brothers. If they are all dead, then do one of your brothers. Then do FF so all his male line matches for 5 generations out (his male & female 4th cousins) can see which set of the surname is his set.

You do not need to do mtDNA. Talk to me or Nancy Hoy if you are considering doing mtDNA. I am not against mtDNA. We just need to talk and I do not want to make this article too long. After you get a kit, please log into it and join the "Fairfield Co, SC" DNA project so Nancy Hoy & I can help you.

James W. Green-R-S16701 III  
285 Agnew Road  
Winnsboro SC 29180-6975  
803-635-9236 Home (Can't see missed calls, so always leave a message)  
803-402-0224 Cell (does not work when I'm home due to "tin" roof)  
[BroomDNA@Juno.Com](mailto:BroomDNA@Juno.Com)

## **FAMILY FINDER** - *DNA TESTS ON SALE*

Our signature autosomal DNA test that automatically finds DNA matches within five generations in our massive database includes **myOrigins**, a unique mapping tool that gives users a detailed ethnic and geographic breakdown of where your ancestors came from.

ONLY \$69<sup>USD</sup>

Save \$30 (Reg. \$99) GO TO THE WEB SITE FOR MORE INFORMATION AND OTHER SALES:

<http://familyreedna.com/>

### Autosomal DNA Report

We are happy to report that the DNA project has grown by leaps and bounds since the last report. We now have 162 members of which 83 have yDNA tests. Most of this increase is probably due to my adding a list of surnames from my tree for Fairfield County families at Ancestry. Family Tree DNA (FTDNA), now suggests our project to anyone that has any of the surnames in the list who is looking for a project join. While growth is good, Mr. Green and I have discussed that we may need to add a join request so that we know that everyone joining does have some connection to Fairfield County. We were recently contacted by one member who has absolutely no connection to Fairfield Co, or South Carolina as one of her parents is from England. Needless to say she does not match anyone in project. The join request would also give us some basic information about the ancestors of the person joining so we can better help them if they have matches to others in the group. We currently have several new members that the administrators do not know their family history and I am planning to send a bulk email asking everyone to please let us know something about their ancestor and their connection to Fairfield County. The purpose of the project, after all, is to create a subset of DNA tests from this area to help the members determine their relationships to their matches. That said, there are instances where we need and welcome tests with only limited connection to our county. For instance, those of you with yDNA tests, we would encourage you to invite your closest yDNA matches to the group even if their ancestor did not pass through Fairfield County. The yDNA matches will help us to determine migration paths of the surname in question. We also are interested in tests for people in counties surrounding Fairfield County who may have intermarried with Fairfield County families. If you need more information about DNA testing or help with compiling and analyzing your matches, please feel free to contact me.

Nancy S. Hoy  
Co-administrator,  
Fairfield County, SC, DNA project  
[Nachalink@yahoo.com](mailto:Nachalink@yahoo.com)  
[Nacha.Link@gmail.com](mailto:Nacha.Link@gmail.com)

### Interesting New Web Site Finds

**[www.MyGenealogyHound.com](http://www.MyGenealogyHound.com) – A free website provided by Hearthstone Legacy Publications.**

<https://csidixie.org/> About CSI: Dixie

Coroners' inquests are some of the richest records we have of life and death in the nineteenth century South. As mortals, we all die, but we do not die equally. Race, place, gender, profession, behavior, and good and bad luck play large roles in determining how we go out of the world. Collecting extant coroners' inquests for the state of South Carolina between 1800 and 1900, "CSI: Dixie" provides rare glimpses into Victorian-era suicide, homicide, infanticide, abortion, child abuse, spousal abuse, master-slave murder, and slave on slave violence.

A project of the [Center for Virtual History](#) at the University of Georgia, CSI: Dixie is delighted to thank the [American Council of Learned Societies](#) and the [Willson Center for Humanities and Arts](#) for their steadfast support

News Release

The Chester District Genealogical Society annual meeting will be held 1 p.m. Aug. 13 at the Wagon Wheel Restaurant, 5724 Lancaster Highway, Fort Lawn. Cost is \$20. James Gill Knox III, a past president of the Chester District Genealogical Society, will speak on the history of Richburg. A native of Chester County, he is the principal of Lewisville High School. Mail checks check for reservations to Chester District Genealogical Society, PO Box 336, Richburg, SC 29729. Deadline is Aug. 8. Late notice you probably should send an email very soon to Chester District Genealogical Society email: [Research@ChesterSCGenealogy.org](mailto:Research@ChesterSCGenealogy.org). See newspaper release online at [Herald Online](#).

## [CanadianHeadstones.com now Exceeds 1.5 Million Records](#)

### **From: Eastmans Online Genealogy Newsletter**



The folks at CanadianHeadstones.com (CH) sent a note announcing that the online web site has now surpassed 1.5 Million records. The announcement states, "CH was founded in 2009 as a completely FREE archive of headstone photographs. As a Canadian non-profit corporation, CH is staffed and controlled by unpaid-volunteer Directors. As a corporation, its longevity does not depend on a single person or private control. CH is the only fully Canadian site which indexes every name on the headstones, provides the complete transcription and is fully searchable on multiple levels including the text of the transcription.

"Hundreds of volunteers and volunteer groups are submitting over 800 records per day!" You can learn more or even submit your own headstone photos for others to enjoy at <http://www.CanadianHeadstones.com>.

### **15 Years of the Raeford News-Journal now Available on DigitalNC**

from Dick Eastman's Online Newsletter, July 2016

Thanks to a partnership between the University of North Carolina at Chapel-Hill and the Raeford News-Journal, 15 more years of the Raeford News-Journal are now available on DigitalNC. With this addition, more than 1,000 issues of the paper are now online, dating back to 1943.

You can check out all of DigitalNC's digitized community newspapers of the North Carolina Newspapers Collection at <http://www.digitalnc.org/collections/newspapers/>.

#### **From the 2014 Trivia Calendar**

July 24, 1974 – Jimmy Porter, Don Reid and Marcus Steele found a cannon shell in the woods behind Woodland Terrace. A demolition squad from Fort Jackson was called and they carried the shell back to the Fort. Word was sent back that the shell may still be intact. The boys report that they dropped it while trying to get it to the Steele House.

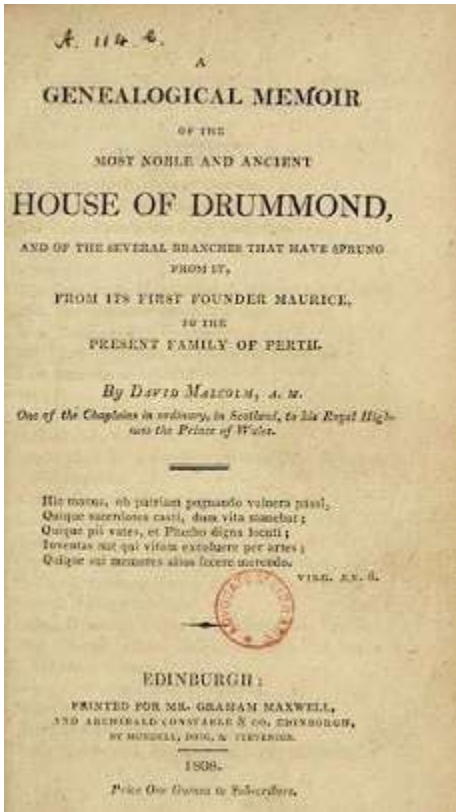
August 4, 1960 -The 19<sup>th</sup> annual meeting of the Coleman, Feaster, and Mobley Family Association was held at the Liberty Universalist Church in Feasterville on Sunday. Frank R. Coleman of Dallas, Texas is the president of the association and there were about 200 in attendance.

August 9, 1871 – Washington Mason while cleaning up some bottom land a few days ago, killed 191 moccasins in two days with ten hands. This is the biggest snake killing that has ever occurred in the county.

September 13, 1871 – The Mt. Zion Society has started rebuilding the institution. The brick for its reconstruction is being made on Capt. J.P. Macfie's farm. They plan to finish the building by February 1<sup>st</sup>.

## National Library of Scotland Adds Almost 400 Digitized Books relating to the Histories of Scottish Families

From: Dick Eastman's Online Newsletter, June, 2016



The National Library of Scotland has recently digitized a selection of almost 400 printed items relating to the histories of Scottish families, and you can read them all in the Library's Digital Gallery at <http://goo.gl/jzKD4M>.

You can search the text of the books for particular words or phrases. All areas of Scotland are included, from Dumfries to Shetland, and many different families and places are represented – in fact many more than the titles might suggest, as a keyword search by place or name will reveal.

Many of the books cover multiple families, so even if your family name is not listed in a book's title, it's worth performing an electronic search for that name anyway.

### From the 2014 Trivia Calendar

August 10, 1961 – The Dr. Carroll A. Pinner Bridge, which joins Parr in Fairfield County and Peak in Newberry County was opened. The Parr-Peak Bridge was named for Dr. Pinner who served the area for many years. He left an automobile on each side of the river and walked the railroad trestle to tend to his patients in Fairfield and Newberry Counties.

September 1, 1922 – While digging the foundations for the new Mt. Zion Institute, an old brass bell was unearthed. It is the bell that hung in the building that was destroyed by fire in 1868.

September 5, 1866 -Mrs. D.B. McCreight informs the ladies of Winnsboro that she may be found at James McCreight house. There she is prepared to repair, refit or trim hats and bonnets at reasonable rates.

September 16, 1954 – The McCrorey-Liston near Salem Cross Roads and the new elementary school at Ridgeway were opened last week. About 900 students will attend McCrorey-Liston and about 400 students will attend Ridgeway.

<u>Member</u>	<u>Query / Answer</u>
Bryan Scott Andrews	<p>Q. Do you know where James Andrews came from?</p> <p>A. We have been unable find where James Andrews came from. From his probate records that were recorded on July 23, 1798 James had the following family: Wife-Priscilla, Children-Mathew, Pateance, Enoch, James, Edward, John, William, Owen and Mary who married a McGraw Owen in listed in the 1790 Census for Fairfield County with 2 males over 16, 1 male under 16 and 3 females in his household. We did not find an Owen again until the 1830 Census; has him in Gwinnett Co., Ga., it shows Owen being between 70 and 80 and a female in the house being between 50 and 60. There was another Owen living in Gwinnett Co., Ga. in 1830 with 1 male under 5, one male between 30 and 40 and a female between 20 and 30, this could be the son of the above Owen. In Find-A-Grave we found a record for Owen Andrews that was buried in the Andrews Cemetery in Liborn, Gwinnett Co. Ga., born 1753 and died September 5, 1847, there was no picture of a tombstone. There is one land record of James Andrews conveying some land to Owen in 1794, but the land records do not show what Owen did with this land. There are no probate records for Owen Andrews, you may be able find some in Gwinnett County, Ga.</p>
Phyllis Vaughan	<p>Q. I sent several items to the museum some time ago regarding the Dunbar's who were members of the Concord Presbyterian Church for a period of time around 1850. According to some members of the church, the Session Minutes of that time period were "borrowed" from The Clerk of the Session and never returned. My question is , Do you suppose if it was published on Facebook some person might have discovered it in their attic etc.</p> <p>Just a thought because I believe that information regarding my family's move from a church in Northern Ireland might be in the minutes.</p> <p>A. I have created PDF files and attached them to our web site for all the Concord Presbyterian Church records that we have in our files. After logging into Members Only Links, then select Churches, then select Concord Presbyterian. You should see a list of PDF files for Concord Presbyterian.</p>
Brenda Cromer Miller	<p>Q, Do you have any information for John Groce or Nimrod Mitchell in Fairfield County?</p> <p>A. We were not able to find anything in Fairfield County. However, we confirmed that John (Joseph) Groce and his wife are buried in Spartanburg County. Also were able to confirm that Nimrod Mitchell was born in Edgecombe County, N.C. and died in Laurens County, S.C.</p>
Julia Palmer Hesler	<p>Q. I'm a new member, and I just have started poking around in the Member's Only section. Of course, I was drawn to the Families page, and started clicking links right away. It took a while for me to get back up to the top to see the note, "(We have begun to digitize our family information and make them available to members. You can request your Surname to uploaded ahead of schedule, otherwise Family information will be loaded in alphabetical sequence.)" Is there any way to easily determine if there is any information that will be added in the future for Macon and Woodward?</p> <p>A. I have been updating information for the Macon family as time permits to our Members Only pages on our web site. Click on this direct link: <a href="#">Macon Information</a> This should take some time for you to look over, in the meantime I am still loading additional information as time permits. Also,</p>

Julia Palmer Hesler	<p>Bob may be someone you may want to touch base with about the Macon's. Mr. Moore's Macon connections western Fairfield families: Macon, Lyles, Gist, Rice. Henry was born in VA circa 1774, and is believed to have come to SC (Camden area with 1 of 2 Macon families on the 1790 (not named as he was only 16, or so) Henry and Hartwell were the heads of households named in 1790. Hartwell was on the 1800 Census, but no Henry Isham who had gone to NC, where he married CA 1799, one Lucy Ward, daughter of Capt Benjamin Ward, and Elizabeth Hill. Benj.'s first wife was Martha Lyles aunt of the Lyles family who eventually settled near the Macons in Fairfield District.</p>
Greg Delleney	<p>Q. Thank you for your last information which related back to John Delleney and Catherine Delleney. In the recent Fairfield County Genealogy Society newsletter on page 45 you indicated along with the Delleney name Nelson and Woodward. I had someone do some preliminary research concerning my possible relationship to Thomas "The Regulator" Woodward. They provided me with this sketch indicating that my great great great great grandmother was Margaret Woodward who was married to James Nelson whose daughter was Catherine Nelson who married my three great grandfather John Delleney. It appears from their research that Margaret Woodward was the daughter of Thomas Woodward and Elizabeth Stokes.</p> <p><b>Question 1:</b> Can you verify for me, as best you can, that I am a descendant of Thomas Woodward through his daughter Margaret Woodward who married James Nelson? In your email of October 27, 2015, you indicated to me that in Bill 1831-1: William, Mary, Isabella and Elizabeth Delleney were siblings and that in 1838 Isabella left a will leaving everything to Mary and Elizabeth. You also indicated that John Delleney was the executor of her estate and William Delleney was a witness. It is family legend that the last one of Mary or Elizabeth which I believe to be Mary died leaving the remaining family land in Rion or Greenbrier to Stark Gaines Delleney, a minor, skipping their nephew Jesse Robert Delleney who was the father of Stark Gaines Delleney.</p> <p><b>Question 2:</b> My question is does either of the wills of Mary or Elizabeth Delleney clarify their relationship to John Delleney who I believe was their brother?</p> <p><b>Question 3:</b> Is there any record as to who was the father of William, Mary, Isabella and Elizabeth Delleney? I believe he was William Delleney who was a private in the Continental Army and was on the muster at the Battle of Camden. The reason there may be a want of probate records for male Delleney is that family legend has it sometime in the early 1800s the Delleney men left South Carolina and went West first settling in Mississippi and one James Delleney eventually settled in Texas where there are Delleney descendants today. I would appreciate any information you could give me in this regard.</p> <p>A. Question #1 – Try to find proof of your relationship to Thomas Woodward. We searched our records and found that Margaret, a daughter of Thomas Woodward did marry James Nelson, but she must have died before 1788. The reason for this is that on March 28, 1846, Jesse Nelson a son of James Nelson appeared in open court and stated that James married Margaret Daniel Turner on 1788. From James' estate papers we know that he was married to a Margaret, this would have been Margaret Turner, and their daughter Catherine married John Delleney. In Fairfield County Equity Court Bill 1847-13, the settling of the estate of Samuel Nelson: states that Samuel was the half-brother of Daniel and John Nelson. In Fairfield County Equity Court Bill 1852-26, a dispute between Daniel and John Nelson with John and Jesse Delleney, children of John and Catherine Delleney and William Shedd who married Harriet Nelson. This bill shows that John Nelson, son of James Nelson had died and he had the following siblings: Jesse, Catherine who married John Delleney, Harriet who married William Shedd, and Daniel. So it looks like you are not a descendant of Thomas Woodward but of James Nelson and Margaret Daniel who was the widow of a Turner.</p>



Greg Delleney	<p>Question #2 – Does the will of Elizabeth Delleney show and relationship with John Delleney?  A. Question #2 – Does the will of Elizabeth Delleney show and relationship with John Delleney?  We were unable to find any information that connects John Delleney with Elizabeth. We did find in Fairfield County Equity Court Bill 1831-1 that John, William, Elizabeth and Isabella were siblings.  Question #3 – Were not able to find the parents of William, Mary, Elizabeth and Isabella were.  Also, I have sent via our printer about 24 pages of information from our files.</p>
Paula Hamiter Baird	<p>Q. Would you have family files on McKinstry, Hamiter and Turnipseed? Would you know if there is a copy of the North of the Broad Rivers: the land and the people (Vol. 1 &amp; 2) available?  Anyway to contact any of the McKinstry family mentioned in the current newsletter?  A. Yes, we have a copy of the North of the Broad books volume 1 and 2. We do not have any for sale at this time. Yes, we can pass along snail mail address, email address, or phone numbers based upon the Y/N checked on their membership application. For the McKinstry, Hamiter and Turnipseed information; on our web site, go to member login and enter password, then go to Families, then go to Hamiter or McKinstry or Turnipseed. I have the family file and tombstone pictures loaded to the web site. I checked all of the links, however, please let me know if you find a link not working. Check out the rest of the site. Please give me a call or email me if you need any assistance with the site.</p>
Darell White	<p>Q. Surname is: "HOOPER". My maternal great-grandmother's name: "Alice Pratt" of BLACKSTOCK, SC. She was born a slave there about 1855. I believe the "Pratt Family" had land in or around that area. She married Allen HOOPER from around that same area. They migrated to Arkansas in about 1869. She died in Fordyce, Arkansas in 1952 at the age of about 97 around the same area.  A. I am sorry to report that I could not find anything in our records for Allen Hooper or Alice Pratt. I was able to find a delayed birth record online for their son Alex, filled out by Alice, October 9, 1943 in Arkansas. Also sent some census and death records. This information gave some light to why I could not find information in Fairfield County. Some of this information you already knew. From the Delayed Birth Record: Son, Alex Hooper born August 19, 1879, Chester, Chester County, South Carolina. Father Allen Hooper born in North Carolina, dead about 23 years, making his year of death about 1920, (according to census he was born about 1842, at least lived in Chester, Chester County, South Carolina between late 1878, about age 36 and early 1885, about age 43). Mother Alice Pratt Hooper born, Chester, Chester County, South Carolina, age last birthday 84, (making her birth about 1854, and her death was reported by you to be 1952, at age 97). According to 1900 census: Son Alex born in South Carolina August 1879 (Chester August 1879 according to delayed birth record), sister Florence born in South Carolina, July 1884, (probably Chester), sister Viola born in Arkansas, June 1886. This indicates that the family moved from South Carolina (probably Chester) between late 1884 and early 1885. I will email you from our printer the delayed birth record mentioned above. I hope Chester County Genealogical Society, Chester County Historical Society or Chester County Court House (which still houses a ton of early records and probate records) can assist you with Alice. Allen will be a little harder being born in North Carolina; not sure where to start there. I would continue with Alice and maybe something will turn up for Allen. Also, the Freedman's Bureau Records are being indexed and are suppose to be made available in July of this year by Ancestry.com. This will be very helpful in finding ex-slaves after the war because it is one of the first sources that list freed slaves by first and last name after the war.  Yes, I already know most of the info; including the delayed birth certificate of Alex Hooper, my great uncle. Alice was conceived by her Slave master. I am desperate to find more about her as a child. She was born in BLACKSTOCK. I will be in your area this Sept. To experience "By The Sweat</p>

Darell White	<p>Of Our Brow" presented by "Historic Brattonsville". I hope to gather more info by then. Perhaps, if I could access old records of the Pratt family that lived in your area in about the 1800's. Frankie said that she knows where the old Pratt land is. There was a gentleman by the name Hooper that purchased property with a Mr. Degrafenreid; (something regarding the railroad in BLACKSTOCK), perhaps this may be a big clue.</p>
Brenda Kinsler	<p>Q. The African American Kinsler descendants' family reunion will take place July 28-30, <b>2017</b>. We will be based in Columbia but plan to spend time in Blythewood, Winnsboro, Ridgeway and Simpson. A few years ago, I visited Winnsboro with Diane Taylor. We had the opportunity to talk to Mr. Eddie Killian who provided information about Kinsler Town. Myself and possibly several cousins are planning a fact finding/planning trip this fall. We would appreciate any additional information that Mr. Killian may have regarding Kinsler Town or maybe have information of a long time resident who may be willing to talk to us. We are also interested in possibly having a picnic as one of our reunion activities in the aforementioned areas where we plan to spend some time. We would appreciate your identification of possible picnic sites that we may visit.</p> <p>A. We will update web site put query for finding someone to talk with them in the next genealogy newsletter. I wonder if the crowd of folk who frequent the old J. H. Kennedy Store (has a new name now) at the fork of Syrup Mill and #34 would have suggestions---perhaps the congregants of St. Matthews Baptist just up the road from the store. Allan Watkins might have some ideas for the Simpson area as he loves the local history of his wife's family (Belton) and community. Does she have any suggestions of family churches in the areas? We could try to find some key persons connected to the churches. There is a nice lakeside park at Lake Monticello. Information on that plus map would be on <a href="http://www.fairfieldsc.com/secondary.aspx?pageID=189">http://www.fairfieldsc.com/secondary.aspx?pageID=189</a> I think Blythewood has a community center which could be googled. It seems that churches would be the best place to look first, but not all the rural churches have contact information readily available.</p>
Bobbie Jean Cannon	<p>Q. Hope you can use some of this info if you do not already have it. <a href="http://www.georgiaroyal.net/genealogy/royal.htm">http://www.georgiaroyal.net/genealogy/royal.htm</a> I can find my great- grandmothers name on the list Augustus Royal but I do not know how to go backwards to find any other relatives. Any clues or help? This information was forwarded to me. My mother's mother Mina Royal Powell . Mina's parents were: father: Moses Royal 1811-1879, Mother: Augustus Ann "Gussie" Royal 5/1/1841-1897.</p> <p>A. I could not find anything on this Royal family in our collection. I did figure out some of the information you provided for you and would like to work with a family tree for you for the Royal family to do some verification. Ancestry is requiring me to start with a living person to create a tree. Bobbie Jean Cannon (you), Father: (need at least name), Mother: (need at least name), Grandfather: (can obtain this info probably), Grandmother: Mina Royal Powel. Or you can update your tree with this information and either make it public or share it with email <a href="mailto:fairfieldgenealogy@truvista.net">fairfieldgenealogy@truvista.net</a> and I can assist you: Minnie "Mina" Royal Powell b. 14 Dec 1873 d. ? (6<sup>th</sup> child of John Powell &amp; Gussie Royal) Augustus "Gussie" Ann Royal b. 1 May 1841 d. 1897 (2<sup>nd</sup> child of Moses Royal &amp; Eliza Broxton) m. 12 Jun 1860 John Powell b 1842 (C.S.A.) d. ? Moses Royal b. 11 Aug 1811 d. 16 Jun 1879 (7<sup>th</sup> child of Samuel Royal Jr. &amp; unknown wife) m. 27 Jan 1839 Eliza Broxton b. 1815 d. 4 Dec 1884 Samuel Royal Jr. b. ca 1775 in Burke County, GA d. by 1850? (7<sup>th</sup> child of Samuel Royal Sr. &amp; Verlinda Godbee (widow)) m. unknown wife Samuel Royal Sr. b. 1729 d. after 1783 &amp; before 1791 (4<sup>th</sup> child of Charles Royal &amp; Sarah Powell) m. 1<sup>st</sup> 8 Mar 1759 Esther Williams 2<sup>nd</sup> 27 Mar 1774 in Effingham County, GA Verlinda Godbee widow of Henry Godbee Charles Royal b. ca 1686 in NC d. 1756 (5th child of Thomas Royal &amp; Isabel Hardy) m. Sarah Powell b.? 1st reference 1737 Onslow County, NC Thomas Royal b. ca 1648 arrived 14 May 1666 in Surrey / Isle of Wright Counties, VA d. 26 May 1709 Surrey / Isle of Wright Counties, VA</p>

Bobbie Jean  
Cannon

m. Isabel Hardy w. named his wife Isabel Hardy and sons.  
I do not have a family tree on line. I have everything printed out and placed in a binder. Anything you need I just make copies of what I have and send it to you as I have in the past. Proceed anyway you deem best. PS sent picture of headstones in Camden of grandparents and Mina's death certificate. Sent invitation to Bobbie Jean to visit her family tree:  
<http://trees.ancestry.com/tree/10169909/recent>

Julia Palmer Hesler

Q. The most interesting thing I've found was in the Conveyor-to-Conveyee-Gifts PDF, and I think you may have known that it would be (hence the star by John Macon). This looks like an index page. *Dare I hope that in book P, page 255 there might be more information?* We have a working theory (that I may have mentioned before, so pardon me if I'm repeating myself), based on the below deed book reference from Supplement to South Carolina Marriages, 1688-1820 that Thomas Woodward Macon is the son of John and Charlotte Woodward Macon, so you can see why an additional deed book entry 2 years later with the same parties would be of interest.

**Macon, John & Charlotte Woodward, 29 Oct 1803; William Woodward, Ezekiel Sanders, wit. Fairfield Deed Book O, p. 399**

We *think* Thomas Woodward Macon was born around 1811. Charlotte Woodward wound up marrying William Turner around 1812 and their first child Margaret Daniel Turner was born in 1813. Unfortunately, we haven't found any documentation of TW's birth, John Macon's death or the Turner marriage, but we're very interested and sorting it all out. Are the actual deed books available in your library? Any help you could provide would be greatly appreciated.

#### GIFTS

Conveyer	to	Conveyee	Year	Bk.	Page	Comment
Leightner, George		Church, Methodist E. S. Mt. Bethel	1818	Z	52	Deed Gift
Lewis, William Sr.		Lewis, Littleton R.	1841	NN	400	In Trust
Lewis, William Sr.		Lewis, Edward	1841	NN	423	Deed Gift
Lewis, William Sr.		Lewis, Edward	1841	NN	425	Deed Gift
Lewis, William Sr.		Lewis, William W.	1841	NN	426	In Trust
Lewis, William Sr.		Lewis, John	1841	NN	429	Deed Gift
Lewis, William Sr.		Lewis, John	1841	NN	430	Deed Gift
Long, James Sr.		Long, Charity	1816	X	224	Deed Gift
Long, James Sr.		Long, Izeet & Vary	1816	X	225	Deed Gift
Long, James Sr.		Long, Vary & Izeet	1816	X	225	Deed Gift
Long, John Jr.		Long, John Sr. & wife	1807	R	85	Deed Gift
Lowry, Agness		Boyd, Susanah	1818	Z	520	Deed Gift
Lowry, James		Galloway, Mary	1823	DD	324	Deed Gift
Lowry, James		Lowry, Elizabeth	1826	HH1	12	Deed Gift
Macon, Hatwell		Macon, Hamble	1813	W	115	Deed Gift
* Macon, John		Woodward, William	1805	P	255	In Trust

Julia Palmer Hesler

A. You can actually look at a great deal of the deed microfilm pages that have been digitized by a FCGS volunteer Ken Shelton in St. Louis, Missouri. I checked and books O, P & W have been digitized and are available. When you find information on these pages, note book and page number and then click on "click here" at bottom of page: Go to Members Only, Go to Deed Microfilm Information Available, [Go to Bond & Deed Books](#) (Tip: Note Book & Page)

Deed Surname Index - Conveyee to Conveyer - Fairfield County 1785-1842

Surnames Beginning With: [A](#) [B](#) [C](#) [D](#) [E](#) [F](#) [G](#) [H](#) [I](#) [J](#) [K](#) [L](#) [M](#) [N](#) [O](#) [P](#) [Q](#) [R](#) [S](#) [T](#) [U](#) [V](#) [W](#) [X](#) [Y](#) [Z](#)

Deed Surname Index - Conveyer to Conveyee - Fairfield County 1785-1842

Surnames Beginning With: [A](#) [B](#) [C](#) [D](#) [E](#) [F](#) [G](#) [H](#) [I](#) [J](#) [K](#) [L](#) [M](#) [N](#) [O](#) [P](#) [Q](#) [R](#) [S](#) [T](#) [U](#) [V](#) [W](#) [X](#) [Y](#) [Z](#)

[Index of Implied Families 1785-1841](#)

[Index of Bonds and Mortgages 1785-1841](#)

[Index of Misc Items - Bonds Conveyee to Conveyer 1785-1842](#)

[Index of Misc Items - Bonds Conveyer to Conveyee 1785-1842](#)

[Index of Misc Items - Gifts Conveyee to Conveyer 1785-1842](#)

[Index of Misc Items - Gifts Conveyer to Conveyee 1785-1842](#)

[Index of Misc Items - Guardian Conveyee to Conveyer 1785-1842](#)

[Index of Misc Items - Guardian Conveyer to Conveyee 1785-1842](#)

[Index of Misc Items - Marriages by Bride 1785-1842](#)

[Index of Misc Items - Marriages by Groom 1785-1842](#)

[Index of Misc Items - Misc Conveyee to Conveyer 1785-1842](#)

[Index of Misc Items - Misc Conveyer to Conveyee 1785-1842](#)

[Index of Misc Items - Mortgages Conveyee to Conveyer 1785-1842](#)

[Index of Misc Items - Mortgages Conveyer to Conveyee 1785-1842](#)

[Index of Misc Items - Power of Attorney Conveyee to Conveyer 1785-1842](#)

[Index of Misc Items - Power of Attorney Conveyer to Conveyee 1785-1842](#)

[Index of Misc Items - Receipts Conveyee to Conveyer 1785-1842](#)

[Index of Misc Items - Receipts Conveyer to Conveyee 1785-1842](#)

[Index of Misc Items - Relinquish Conveyee to Conveyer 1785-1842](#)

[Index of Misc Items - Relinquish Conveyer to Conveyee 1785-1842](#)

[Index of Misc Items - Separations 1785-1842](#)

[Index of Misc. Records 1785-1841](#)

To Look Up Bond or Deed Record - [Click Here](#) - Page Down to Bond or Deed Book

(Tip: Search - Press Ctrl-F, Find Window Appears, Enter search Term, Depress Enter)

Mary Morgan

Q. In Volume 27, Number 2, 32<sup>nd</sup> year Newsletter, 2<sup>nd</sup> quarter 2016, in answering my letter, you mentioned that you have lots of tombstone pictures and might have some for Arledge and Featherston(e). When you have time, could you please check to see if you have pictures for any of the following: Isaac Arledge (or possibly Aldrich) who died before 8 Nov 1790; Wife Anna or Hannah – died after 5 Jan 1790. She may have been a 2<sup>nd</sup> wife, so maybe there was a previous wife whose name I don't know. According to DAR record, he died in, "Fairfield Dist, Camden Dist, SC." Clement Arledge, died before 23 Jan 1822; His Wife – name unknown – probably died before 19 Sep 1821. DAR record says he died in Fairfield Co SC. Lucey Featherston, will written 1797, probated in 1799. Her Husband – name and dod unknown (probably parents of John, Sr and grandparents of John Jr listed below. Lucey's and John Jr's wills were both probated in Chester Co. John Featherston [Sr] – dod unknown; His Wife – Willey Colston Featherston – dod unknown - (both probably died after 1811) John Featherston [Jr] – will probated 1811 (their son, who mentioned them in his will, so I presume he died before they did)

Mary Morgan	<p>A. When people are deceased and buried that early they are usually at Family Burial Grounds. It is our mission to find and document as many of these burial grounds as possible. We do not have tombstone pictures for the Arledge and Featherston people requested. These are the oldest Arledge and Featherston graves we are aware of to date. You can go to FindAGrave and find Arledge at (click on link) <a href="#">Old Mount Zion Baptist Church</a> in Chester County, SC. Also, you can find Arledge and Featherston at (click on link) <a href="#">Bethesda United Methodist Church</a> in Fairfield County.</p> <p>I'm not surprised that there are no records from so long ago, but the information you sent was interesting, anyway. It's always good to rule things out, and you never know what you might find. The names are familiar, but the dates are too late, so probably these were descendants named after the people I'm looking for. They certainly believed in carrying on the family names. I noticed that there were some Nichols and Nickels in the listings for both cemeteries, and thought perhaps the information might be of interest to member Audrey A. Garland, if she doesn't already have it. Linda had sent me a request on May 31, asking if it was OK to give her my email address, since she had some questions about the Arledge and Nichols families.</p>
Marsha Ulmer	<p>Q. Do you have any Patrick family information?</p> <p>A. This is from the Fairfield County Family Histories book: Patrick's in Fairfield</p> <p>T.G. Patrick was the first of this clan to settle in Fairfield. He came to this county in 1872. He came as depot agent for Southern Railway and postmaster for White Oak. He had just finished a course in business administration in Atlanta Business College. He was all business and he meant to make good. He was ambitious and he had complete confidence in his ability to succeed. But he had no capital. To get capital to open a business he formed a partnership with his older brother, R. A. They opened T. G. Patrick and Company and began a mercantile company that was to have remarkable success. Soon he had his father, John Robert Patrick, come down from the Sharon Bullocks Creek area of York County to look the Situation over. He was impressed and decided to sell some of his holdings in York County and invest in lands near White Oak. This was just six or seven years after the end of the Civil War. Fairfield had been dominated by slave holders and they were having a very difficult time managing their business which was mostly farming with free labor. Actually, the owners had never worked themselves. They had lost everything during the war. They were broke. To farm at all they were required to mortgage their property; to try, under very difficult circumstances to make a living by the only means they knew, farming. Actually, they were not well equipped at all to do this as they had always depended upon overseers to do this for them, and the outcome was disastrous. The Patrick's had been brought up to work themselves and from a very meager start accumulated quite a sizeable acreage in Fairfield. John Robert Patrick was a son of Thomas C. Patrick, who came to this country from Ireland in the early 1800s. J. R. soon realized that he could not support and educate his family on the poor land alone. He invested in portable machinery, being mechanically inclined, and did most of the threshing and ginning in his section of York County. He had five sons, Robert Alexander, Thomas Gilfilling, John Blair, Samuel Ross and William Minter. His daughters were Eliza Jane and Sarah (Sally). From R.A., as he was known, there were one son and one daughter, Robert Erskine and Mrs. Hannah Wylie, and several grandchildren: Robert E., Jr., R.A. II, Johnston T., David M. and William Wylie, still living in the county. There are also two great-grandchildren, Amelia and Johnny, son and daughter of Johnston T. Patrick. Three of T.G.'s grandchildren still reside in Fairfield; they are Thomas Patrick Matthews and his wife Mary Clair Ivey; and twins, Hannah and Ivor. Hannah is Mrs. H.G. Phillips, Jr., and Ivor is Mrs. James W. Stephenson. W.M. Patrick had two sons who made their homes in Fairfield. William Banks died just recently, and Michael T. lives at the home place at Woodward. William Banks' son, Harmon, is in a medical practice in Winnsboro, and lives at White Oak. We also have two other books specifically on Patrick's.</p>

Ken Peay	<p>Q. I have some questions regarding both the Peay genealogy and the ladies who married into the family. We are looking for any information on: - Malvern Hall - Flint Hill – Melrose - records listing all the children of Austin Ford Peay and Elizabeth Cunningham Peay - details/ records about the Brawley family which immigrated in the 1880s from County Antrim In Northern Ireland. One of the daughters, Jennie May Brawley, married William Cunningham Peay - documents re: marriage of Jennie May Brawley.</p> <p>A. Email sent: Attached are articles I have stored in my digital files. The piano was given to Eliza Peay by her father Austin Peay as a wedding present when she married Thomas Minter Lyles, written in his will in 1834. The portrait of Austin Peay belongs to a cousin of mine who has said that his will leaves it to the museum here. I find his hair style very interesting! I went to Salem College which was an academy for young girls in the 19<sup>th</sup> C. The Peay cousins are listed in the correspondence I have attached. The story about my experiences there finding out about the Peay girls is attached here. The Peay family visited the museum and we were able to give the some additional information and an obituary that they have been looking for.</p>
Valeria Prophet	<p>Q. I am in the process of planning our “Qualls” family reunion, for the first time, in Charleston, South Carolina, on Friday, August 5, through Sunday, August 7, at the Embassy Suites hotel in North Charleston, South Carolina. I have been able to trace our family roots back to Fairfield County, South Carolina, via the 1880 Census records. I am requesting your help to find out more about our family while they lived in South Carolina (and later migrated to Arkansas), maybe the plantation they lived on, other family members, where they lived before, marriage certificate, death certificates, etc. Attached is a spreadsheet that captures the various spellings, dates of birth, etc. for Roseborough and Qualls as a reference, along with a copy of the 1880 Census record view. Also, please announce/publish our family reunion in your Fairfield County communications. Please contact me with any questions or if need more information. My contact information is listed below. <b>Valeria Prophet Qualls Family Reunion Coordinator- Charleston, South Carolina Cell: 404-358-2457 <a href="mailto:vprophet5@gmail.com">vprophet5@gmail.com</a></b></p> <p>Searching for three (3) family members that were in Township 5, Fairfield County, South Carolina, in 1880: Emma Rodgers / Emma Rosebury / Emma Roseborough; Mary G. Quales / Mary J. Quarles / Jane Qualls; Robert Quales / Robert Quarles.</p> <p>A. Below are the Quarles, Quales, and Qualls records that volunteer Jon Davis has compiled:  Johnson Lena Quarles North Carolina Death Certificate Born-March 9, 1895-South Carolina Died-April 11, 1972-Charlotte, N. C. Father-Jeff Quarles Mother-Hattie Green Buried in Ridgeway  Lamar James Marvin North Carolina Death Certificate Born-March 11, 1965-Charlotte, N. C. Died January 20, 1988-Charlotte, N. C. Father-Joseph Lamar Mother-Mary Qualles Buried in Ridgeway  Lamar Joseph North Carolina Death Certificate Born-November 23, 1929-South Carolina Died July 8, 1972-Charlotte, N. C. Husband of Mary Qualls Father-Tom Lamar Mother-Maggie Hunter Buried in Ridgeway  Martin John Newspaper Married Miss Quarles-daughter of Rev. John Quarles Married a few days ago March 4, 1879 Issue  Outen Dicie Death Certificate Fairfield County-4128 Born in S. C. Died-March 10, 1923 @ about 68 years-Township # 7 Father-Geo. Quarles-S. C. Mother-K. Quarles-S. C.  Quails Charles Newspaper Killed at Amick Brothers saw mill in Lexington January 25, 1888 Issue  Qualis Eliza Newspaper Died on the 6th at the home of her son-in-law, James Martin of Flint Hill February 22, 1888 Issue  Qualls Alonzo SSN Index Born-July 7, 1921 Died-January 1981  Qualls Chester E. Mt. Olive Baptist (Ridgeway) Born-January 6, 1960 Died-May 23, 2006 SSN Index Born-January 6, 1960 Died-May 23, 2006  Qualls Dank Mt. Olive Baptist (Ridgeway) Born-1938 Died-1994 North Carolina Death Certificate</p>

Valeria Prophet	<p>Born-April 22, 1938-Fairfield County Died-April 26, 1994-Charlotte, N. C. Husband of Peggy Ruth Bell Father-David Qualls Mother-Emma Brunson Buried in Ridgeway</p> <p>Qualls David Mt. Olive Baptist (Ridgeway) Born-1896 Died-1958</p> <p>Qualls Eddie, Sr. Mt. Olive Baptist (Ridgeway) Born-1922 Died-1971 SSN Index Born-August 27, 1922 Died-March 1971</p> <p>Qualls Emma B Mt. Olive Baptist (Ridgeway) Born-1898 Died-1962</p> <p>Qualls Eric M Mt. Olive Baptist (Ridgeway) Born-1970 Died-1989</p> <p>Qualls Etta Donzala Evergreen Memorial Born-September 9, 1955 Died-August 30, 2004 SSN Index Born-September 9, 1955 Died-August 30, 2004</p> <p>Qualls Frank Mt. Olive Baptist (Ridgeway) Born-1943 Died-1999</p> <p>Qualls Henrietta J. Mt. Olive Baptist (Ridgeway) Born-1920 Died-1994</p> <p>Qualls Ida Mt. Olive Baptist (Ridgeway) Born-1891 Died-1962</p> <p>Qualls James Death Certificate Fairfield County-15881 Born-August 16, 1911-Fairfield County Died-August 16, 1915 Father-John Qualls-Fairfield County Mother-Ida Robertson-Fairfield County Buried at Mt. Alay</p> <p>Qualls James L. Mt. Olive Baptist (Ridgeway) Born-1926 Died-1988 North Carolina Death Certificate Born-December 16, 1926 Died-March 31, 1988 Father-David Qualls Mother-Emma Brunson Buried in Ridgeway</p> <p>Qualls John, Jr. Mt. Olive Baptist (Ridgeway) Born-1910 Died-1963</p> <p>Qualls John, Sr. Mt. Olive Baptist (Ridgeway) Born-1880 Died-1963</p> <p>Qualls Kevin B. Mt. Olive Baptist (Ridgeway) Born-April 6, 1970 Died-May 14, 1988</p> <p>Qualls Mim Mt. Olive Baptist (Ridgeway) Born-1903 Died-1993</p> <p>Qualls Robert SSN Index Born-August 29, 1952 Died-April 14, 2009</p> <p>Qualls Sarah I. Macedonia Baptist Church Born-June 15, 1930 Died-June 12, 1993</p> <p>Qualls Westley Mt. Olive Baptist (Ridgeway) Born-November 13, 1917 Died-December 10, 2005 SSN Index Born-November 2, 1917 Died-December 10, 2005</p> <p>Qualls Wilbur Mt. Olive Baptist (Ridgeway) Born-February 6, 1945 Died-May 14, 1995</p> <p>Qualls Wilie J SSN Index Born-October 4, 1953 Died-June 26, 1993</p> <p>Qualls Johnson Death Certificate Fairfield County-8521 Born-February 20, 1821-Mississippi Died-May 25, 1917 Father-Jeff Qualls-S. C. Mother-Unknown Buried at Sutton Branch</p> <p>Quarles Adlee Death Certificate Fairfield County-5837 Born-December 29, 1896-S. C. Died-April 3, 1925-Township # 8 Father-Fletcher Dawson-S. C. Mother-Jane Jones-S. C.</p> <p>Quarles Baley Death Certificate Fairfield County-13175 Born-July 3, 1920-S. C. Died-July 3, 1920-Township # 7 Father-W. S. Quarles-S. C. Mother-Ellen Chatmare-S. C. Buried at Pisgah Church</p> <p>Quarles Bob Newspaper Killed by his brother, Wm. Quarles on Tuesday May 2, 1888 Issue</p> <p>Quarles Ernest Death Certificate Fairfield County-18457 Born-July 15, 1917-S. C. Died-October 30, 1920-Township # 7 Father-A. S. Quarles-S. C. Mother-Ellen Chatman-S. C. Buried at Pisgah Church</p> <p>Quarles John E., Sr. SSN Index Born-January 28, 1951 Died-April 29, 2004</p> <p>Quarles Mary Death Certificate Fairfield County-10610 Born-December 12, 1890-S. C. Died-June 2, 1926-Township 8 Father-Harris Woodward-S. C. Mother-Margaret Melton-S. C. Buried at St. Olive Church</p> <p>Quarles Miss Newspaper Married John Martin Miss Quarles-daughter of Rev. John Quarles Married a few days ago March 4, 1879 Issue</p> <p>Quarles Williams S. Mt. Pisgah Baptist Born-April 13, 1897 <a href="#">Died-February 25, 1936</a></p> <p>Williams Mary Gladden Death Certificate Fairfield County-17439 Born-July 15, 1873-Kershaw County, S. C. Died-December 4, 1939-Township # 7 Wife of Arthur Williams Father-Robert Gladden-S. C. Mother-Emma Qualls-S. C. Buried at White Oak Church</p>
-----------------	---

Valeria Prophet	<p>Sent a list of church cemeteries compiled by Kadena Woodard.</p> <p>This is an obituary in our collection and another is attached above: Amanda Lee W. Able RIDGEWAY - Amanda Lee · Walker Able , 61, died Friday; Oct. 4, 1996 -10/24/1996 Services conducted by = Bishop Eddie Squirewell and the Rev. Anthony ' McNeil were held 'at Bible light Holiness Church on Wednesday, Oct. 9, 1996. Burial followed in church cemetery. Born in Fairfield County on March 31, 1935, Mrs. Able was the daughter of the late Rosetta Qualls and James Walker. She was a member of Praise Temple Church in New Jersey and was on several committees. Survivors include, two daughters, Bernice Murphy of Roselle, N.J. and Ada Kelly of Columbia; six sons, Lyvonne Able , William Able, Michael Able and James A . Able, all of Columbia, Winston Able of Blythewood and Melvin Able of Darlington; two sisters, Cora Miller and Leatha Belton of Ridgeway; two brothers, James Walker of Granite Quarry , N.C. and Ernest Walker of Ridgeway; 15 grandchildren and a host of nieces, nephews and cousins. Russeii-McCutchen Funeral Home was in charge of arrangements.</p> <p>Here is some information on Rodgers:</p> <p>Able Harry Calvary Baptist Church Born-August 17, 1916 Died-August 22, 1997 SSN Index Born-August 15, 1916 Died-August 15, 1997</p> <p>Able Harry, Jr. Calvary Baptist Church Born-1939 Died-October 31, 2004 Newspaper Obituary Son of Harry &amp; Rosa C. Able, Sr. Husband of Eloise Hudson Able Father of: Harry Able, III Anthony Able Vernita A. Walker Rosa A. Jones Ettal Able Rosalind D. Able Step Father of: Vernon Hudson Brother of: Willie C. (Frances) Able Haskell (Loretta) Able Larry Belton James (Carolyn) Belton Bernice Rodgers Armstrong Lucille Robinson Shady Grove AME Born-May 30, 1941 Died-March 9, 2008 Newspaper Obituary Born-May 30, 1941 Died-March 9, 2008 Daughter of Tom &amp; Lucille Hill Robinson Wife of D. Thomas Armstrong Mother of: Michael (Sabrina) Armstong-Columbia. S.C. Renee Armstong (Milton) Curry-Columbia. S. C. Andrenna Armstrong (Cleveland) Smith-Columbia. S. C. Sister of: Elliot Grier-Winnsboro, S. C. Jannie (Sam) Rodgers-Spartanburg, S. C. SSN Index Born-May 31, 1941 Died-March 9, 2008</p> <p>Ridgers Charley Death Certificate Fairfield County-544 Born-Fairfield County Died-January 24, 1933 @ about 56 years-Strother Husband of Hattie Rodgers Father-Ned Rodgers-Fairfield County Mother-Sara Lyles-Fairfield County Buried at Hopewell</p> <p>Rodgers Aaron Antioch Baptist Church Born-1893 Died-1977</p> <p>Rodgers Charlie SSN Index Born-January 2, 1933 Died-December 1968</p> <p>Rodgers Charlie Mt. Pilgrim Baptist Born-November 4, 1952 Died-February 26, 1978</p> <p>Rodgers Charlie Zion Hopewell Baptist Died-January 24, 1933 Aged 81</p> <p>Rodgers Ed Death Certificate Fairfield County-36543 Born-May 4, 1916-S. C. Died-July 1, 1916 Father-Unknown Mother-Sallie Rodgers Buried at Hope Hill</p> <p>Rodgers Edna White Hall AME Died-March 29, 1946</p> <p>Rodgers Emanuel Antioch Baptist Church Born-1863 Died-1937</p> <p>Rodgers Fannie B. Mt. Pilgrim Baptist Born-September 6, 1934 Died-April 8, 1999</p> <p>Rodgers Harriet Zion Hopewell Baptist Died-June 20, 1919 Aged 55</p> <p>Rodgers Henry Mt. Visit AME Zion Born-August 21, 1934 Died-July 6, 1992</p> <p>Rodgers Johnny Mt. Visit AME Zion Born-May 10, 1943 Died-February 27, 1985</p> <p>Rodgers Louise Antioch Baptist Church No Dates</p> <p>Rodgers Margaret B. Antioch Baptist Church Born-1873 Died-1957</p> <p>Rodgers Mary A. SSN Index Born-November 13, 1939 Died-April 22, 2010</p> <p>Rodgers Ozeal W. Mt. Visit AME Zion Born-July 18, 1938 Died-June 20, 2006</p> <p>Rodgers Rosa B. Mt. Visit AME Zion Born-March 3, 1911 Died-June 17, 1995 SSN Index Born-March 22, 1911 Died-June 17, 1995</p> <p>Rodgers Sallie B. SSN Index Born-April 19, 1933 Died-December 12, 2009</p>
-----------------	--



Valeria Prophet	<p>Is this Emma? Roseborough Emma D. Mt. Pisgah Baptist Born-February 12, 1866 Died-January 1, 1995 ? (she would be about 129)</p> <p>There are a lot of very old graves at Mt. Pisgah Baptist, check them out.</p> <p>Here is some Rosboro, Rosborough, Roseboro, Roseborough information:</p> <p>Lyles Daisy Death Certificate Fairfield County-3736 Born-1885-S. C. Died-March 1, 1922-Township # 2 Father-Sam McCamac-S. C. Mother-Mary Norman-S. C. Buried in Rosboro Graveyard</p> <p>McCamac Caline Death Certificate Fairfield County-11184 Born-1835-S. C. Died-June 22, 1915 Father-Unknown Mother-Sarah Norman-S. C. Buried in Rosborough Graveyard</p> <p>McCamic Seam Death Certificate Fairfield County-29569 Born in S. C. Died-December 30, 1918 @ 76 years Father-Mr. McCanic-S. C. Mother-Unknown Buried in Rosborough Cemetery</p> <p>McMulan Eliza Death Certificate Fairfield County-18131 Born-January 3, 1898-Fairfield County, S.C. Died-October 16, 1919-Township # 7 Father-Will Roach-S. C. Mother-Mattie Rosboro-S. C. Buried at Mt. Pisgah</p> <p>Roach Corena Death Certificate Fairfield County-10866 Born-April 1913-Fairfield County, S. C. Died-June 1, 1917 Father-Will Roach-Fairfield County Mother-Mattie Rosboro-Lancaster Buried at Mt. Pisgah</p> <p>Roach Mattie Death Certificate Fairfield County-19769 Born in Lancaster County, S. C. Died-October 9, 1915 Father-Charles Rosboro-Chester County, S. C. Mother-Liza -Lancaster County, S. C. Buried at Mt. Pisgah Church</p> <p>Rosboro Bertha Death Certificate Fairfield County-12872 Born-1897-S. C. Died-July 7, 1917 Father-Al Rosboro-S. C. Mother-Julia Stevenson-S. C. Buried at White Oak</p> <p>Rosboro C. W. New Hope Baptist Church Born-July 21, 1879 Died-February 12, 1954</p> <p>Rosboro Carrie McGriff New Hope Baptist Church Born-December 7, 1878 Died-March 30, 1918 Wife of C. W. Rosboro</p> <p>Rosboro Infant Daughter Death Certificate Fairfield County-22089 Born-February 4, 1917-Columbia, S. C. Died-August 4, 1917 Father-Unknown Mother-Minne Rosboro-Fairfield County Buried at Bethlehem</p> <p>Rosboro Mattie Death Certificate Fairfield County-20259 Born-May 30, 1880-Fairfield County Died-November 19, 1917 Father-Amos Nelson-Fairfield County Mother-Sudkie Nelson-Fairfield County Buried in Alutt Graveyard</p> <p>Rosboro Rosa Ellen Death Certificate Fairfield County-6403 Born-1917-S. C. Died-April 12, 1917 Father-unknown Mother-Clara Rosboro Buried at White Oak</p> <p>Rosborough Abram Death Certificate Fairfield County-8770 Born-July 20, 1857-S. C. Died-June 1, 1932-Township # 7 Husband of Lottie Rosborough Father-Ben Rosborough-S.C. Mother-Unknown Buried at Pisgah Church</p> <p>Rosborough Infant Son Death Certificate Fairfield County-2377 Born-February 4, 1926-S.C. Died-February 4, 1926-Township # 8 Father-Ed Rosborough-S. C. Mother-Beulah Washington-S. C.</p> <p>Rosborough Jim Death Certificate Fairfield County-19048 Born-October 16, 1921-Ridgeway Died-December 31, 1921-Township # 8 Father-Eddie Rosborough-Ridgeway, S. C. Mother-Beulah Rosborough-Ridgeway, S. C.</p> <p>Rosborough Matilda Newspaper Died on Wednesday Aged 81 years Colored, buried in the Methodist Cemetery March 3, 1886 Issue</p> <p>Rosborough Sadie Death Certificate Fairfield County-30542 Born-September 1914-Columbia, S. C. Died-April 24, 1916 Father-Unknown Mother-Sarah Rosborough-Chester, S. C. Buried at Pisgah Church</p> <p>Rosborough Will Death Certificate Fairfield County-18585 Born in Fairfield County Died-October 9, 1917 Father-John Rosborough-Fairfield County Mother-Missotern Austin-Fairfield County</p> <p>Rosborough William Newspaper Died on Tuesday Shot and killed Brother-in-law of Arthur</p>
-----------------	---

Valeria Prophet	<p>Golding December 29, 1900 Issue</p> <p>Roseboro John Death Certificate Richland County-9130 Born-S. C. Died-May 28, 1928 @ 46 years-Columbia Father-Wm. Roseboro-S. C. Mother-Eugenia Rosboro-S. C. Buried in Ridgeway, S. C.</p> <p>Roseboro Tom Death Certificate Fairfield County-16687 Born-September 6, 1917-S.C. Died-September 8, 1917 Father-Rolam Rosborough-S.C. Mother-Mattie GilliaMother-S.C.</p> <p>Thomas Ida Death Certificate Fairfield County-6184 Born-December 24, 1918-Fairfield County Died-March 25, 1919 Father-Willie Thomas-Fairfield County Mother-Sallie Stevenson-Fairfield County Buried in Rosboro Graveyard</p> <p>Watkins Chester Arthur Death Certificate Fairfield County-6985 Born-February 7, 1904-Fairfield County Died-May 11, 1937-Winnsboro Husband of Sara Watkins Father-Sтивен Watkins-Fairfield County Mother-Makaly Rosborough-Fairfield County Buried in Fairfield County</p> <p>Williams Infant Daughter Death Certificate Fairfield County-42291 Born-October 13, 1916-Fairfield County Died-October 13, 1916 Father-Mau WilliaMother-Fairfield County Mother-Silvia Rosborough-Fairfield County Buried at Mt. Olive</p> <p>Young George Death Certificate Fairfield County-4506 Born-January 16, 1895-Fairfield County, S.C. Died-March 23, 1915 Father-Simpson Young-Fairfield County Mother-Janie Rosborough-Fairfield County, S. C. Buried at White Oak</p> <p>Duckett Cora Death Certificate Sullivan County, Tenn.-340 Born-April 14, 1879-S.C. Died-June 7, 1919-Kingsport, Tenn. Father-Jacoby Roseboro-S.C. Mother-Jannie ?-S.C. Buried in Shelton, S.C.</p> <p>Evans Alma Roseboro Weeping Mary Baptist-White Oak Born-August 10, 1923 Died-August 16, 1992 SSN Index Born-August 10, 1923 Died-August 16, 1992</p> <p>Ford Herbert Death Certificate Richland County-14121 Born-1879-S.C. Died-August 15, 1935-Blythewood Father-Young Ford-S.C. Mother-Mary Ann Roseboro-S.C. Buried in Simpson, S.C.</p> <p>Hill Ruby May Death Certificate Fairfield County-22072 Born-1915-S.C. Died-December 10, 1917 Father-Elliott Hill-S.C. Mother-Lucile Roseboro-S.C.</p> <p>Roseboro Alice G. Weeping Mary Baptist-White Oak Born-1874 Died-1953</p> <p>Roseboro Andrew, Jr. Weeping Mary Baptist-White Oak Born-March 5, 1933 Died-January 5,1990</p> <p>Roseboro Andrew, Sr. Weeping Mary Baptist-White Oak Born-March 8, 1905 Died-May 25, 1974</p> <p>Roseboro Carrie Death Certificate Fairfield County-6306 Born-December 7, 1879-Fairfield County Died-March 30, 1918 Father-Peter McGrifFather-Fairfield County Mother-Carrie McGrif Father-Fairfield County Buried at Good Hope</p> <p>Roseboro Davetta Morris Creek Baptist Church Born-August 9, 1970 Died-July 21, 2003</p> <p>Roseboro Ella Davis Weeping Mary Baptist-White Oak Born-April 2, 1902 Died-January 28, 1973 SSN Index Born-April 2, 1902 Died-January 1973</p> <p>Roseboro Frank Weeping Mary Baptist-White Oak Born-July 10, 1937 Died-June 18, 1996</p> <p>Roseboro Helen St. John AME Born-July 26, 1913 Died-February 23, 1992 North Carolina Death Certificate Born-July 26, 1913-Winnsboro Died-February 23, 1992-Charlotte, N.C. Wife of Joseph</p> <p>Roseboro James Quettie Death Certificate Fairfield County-2199 Born-November 22, 1930-Blackstock, S. C. Died-February 16, 1931-Township # 2 Father-Unknown Mother-Janie Parrot-S. C. Buried at Armenia</p> <p>Roseboro Joan Craig Shady Grove AME Born-May 24, 1938 Died-April 28, 1982</p> <p>Roseboro John Death Certificate Richland County-9130 Born-S. C. Died-May 28, 1928 @ 46 years-Columbia Father-Wm. Roseboro-S. C. Mother-Eugenia Rosboro-S. C. Buried in Ridgeway, S. C.</p> <p>Roseboro Joseph T., Sr. St. John AME Born-February 11, 1908 Died-August 30, 2000</p> <p>T. Roseboro Father-George Richmond Mother-Rosetta Mendenhall Buried in Winnsboro</p> <p>Roseboro Junior Death Certificate Fairfield County-2822 Born-near Rockton, S. C. Died-January 12, 1929 @ 8 months-Township # 14 Father-Unknown Mother-Hattie Roseboro-near Rockton, S. C. Buried at St. Mark</p> <p>Roseboro Leroy, Sr. Weeping Mary Baptist-White Oak Born-August 2, 1940 Died-Sept 20, 1997</p>
-----------------	---

## Valeria Prophet

Roseboro Lucile Death Certificate Fairfield County-21375 Born-November 13, 1929-Fairfield County, S.C. Died-December 27, 1929-Township # 3 Father-Andrew Roseboro-Fairfield County, S. C. Mother-Mary Eliza (Jordan) Roseboro-Fairfield County, S. C. Buried at Weeping Mary Church

Roseboro Maggie Death Certificate Fairfield County-4426 Born-Fairfield County Died-March 27, 1928 @ 55 years-Township # 7 Father-Julis DurhaMother-Fairfield County Mother-Unknown Buried at White Oak

Roseboro Mary Janie Nazareth Presbyterian Died-February 9, 1918 Aged 66

Roseboro Mary Jordan Weeping Mary Baptist-White Oak Born-Jan 20, 1913 Died-Jan 17, 2000

Roseboro Mattie Weeping Mary Baptist-White Oak Died-December 28, 1949

Roseboro Phylis Fairfield County-15004 Born-1835-Winnsboro, S. C. Died-August 7, 1920-Township # 14 Father-Unknown Mother-Malenda Woodward-Winnsboro. S.C.

Roseboro Rosetta St. John AME Born-August 23, 1931 Died-December 23, 1934

Roseboro Sam Death Certificate Fairfield County-15691 Born-August 16, 1929-S. C. Died-September 29, 1929-Township # 2 Father-Unknown Mother-Janie Parrot-S.C.

Roseboro Sarah Death Certificate Fairfield County-5526 Born-Fairfield County Died-April 25, 1935 @ 66 years-Ridgeway, S.C. Wife of Calvin Roseboro Father-Unknown Mother-Unknown

Roseboro Tom Old Russell Died-April 2, 1948 Aged 92

Roseboro Walter North Carolina Death Certificate Born-February 1947-South Carolina Died-May 1, 1964-Monroe, N. C. Father-Andrew Roseboro Mother-Daisy Lawhorn Buried in Fairfield County

Roseboro Walter Weeping Mary Baptist-White Oak Born-1870 Died-1937

Roseboro Walter Mae Weeping Mary Baptist-White Oak Born-Sept 3, 1932 Died-March 27, 2001

Roseboro Willie Death Certificate Fairfield County-15960 Born-November 9, 1933-S. C. Died-November 9, 1933-Township # 2 Father-Wardell Roseboro-S. C. D-Odis Smith-S. C. Buried in Gethsemane Cemetery

Roseboro Willie Edward Weeping Mary Baptist-White Oak Born-July 10, 1949 Died-Oct 3, 2003

Roseboro Willie Nelson Weeping Mary Baptist-White Oak Born-April 22, 1920 Died-April 27, 1968

Roseboro Wyatt Mt. Pisgah Baptist Born-June 20, 1877 Died-October 2, 1913

Jefferson Isreal Death Certificate Fairfield County-3854 Born in S. C. Died-March 17, 1925 @ about 60 years-Township # 7 Father-Unknown Mother-Amy Roseborough-S. C.

Johnson Leon Oaklawn Born-September 18, 1946 Died-April 22, 1985 Husband of Joanne Johnson Son of Charity J. Roseborough

Kennedy Izetta Roseborough Good Hope Baptist Church Born-Oct 16, 1924 Died-March 23, 2006 SSN Index Born-October 16, 1924 Died-March 23, 2006

Lane Ellen Roseborough SSN Index Born-July 19, 1958 Died-October 2, 2010

Perry Lila Fairfield County Probate Record File 173, Package 4397 Will: Dated November 15, 1949 Proved October 5, 1953 Recorded October 9, 1953 Died-July 1953 Wife of Jacob Perry-61-Winnsboro Aunt of: Henrietta Stamper-Baltimore, married. Mary Roseborough-Baltimore, married. Virginia McCormick-Baltimore, married. Eddie Lee Roseborough-Baltimore, married. Lundine Roseborough-Baltimore, married.

Perry Lilia B. Greater Mt. Zion Baptist Church Born-1933 Died-2005

Richmond Ruth Death Certificate Fairfield County-12146 Born-1899-Fairfield County Died-August 14, 1937-Township # 12 Wife of Ed Richmond Father-Elick Stewart-Fairfield County, S. C. Mother-Dina Roseborough-Fairfield County, S.C. Buried in Fairfield County

Richmond Ruth Death Certificate Fairfield County-10769 Born-March 1, 1934-Fairfield County Died-July 21, 1934-Fairfield County Father-Edd Richmond-Fairfield County Mother-Ruth Roseborough-Fairfield County Buried at Shady Grove

Roseborough Alex Nazareth Presbyterian Born-February 3, 1873 Died-January 12, 1963

Roseborough Amy Death Certificate Fairfield County-598 Born-Richland County, S.C. Died-January 15, 1931-Winnsboro Wife of Major Roseborough Father-Earer Harts Mother-Holly ????

Valeria Prophet	<p>Buried in Mollow Hill Cemetery</p> <p>Roseborough Anna Red Hill Baptist Born-August 12, 1900 Died-February 9, 1953</p> <p>Roseborough Arthur Nazareth Presbyterian Born-May 23, 1883 Died-June 24, 1958</p> <p>Roseborough Belle St. Mark Baptist Born-July 4, 1873 Died-October 15, 1953</p> <p>Roseborough Beulah Mt. Pisgah Baptist Born-April 1, 1890 Died-February 6, 1952</p> <p>Roseborough Carrie H. Nazareth Presbyterian Born-May 27, 1885 Died-July 7, 1965</p> <p>Roseborough Charity Oaklawn Born-September 9, 1917 Died-June 19, 2000 Funeral Home Marker</p> <p>SSN Index Born-September 9, 1917 Died-June 19, 2000</p> <p>Roseborough Charlie Mt. Pisgah Baptist Died-May 26, 1909 Aged 84</p> <p>Roseborough Dinah Death Certificate Richland County-11865 Born-S. C. Died-July 31, 1923 @ about 45 years-Columbia Father-Abraham Roseborough-S. C. Mother-Caroline Hopkins-S. C. Buried in Ridgeway, S. C.</p> <p>Roseborough Eddie Death Certificate Fairfield County-5256 Born-Fairfield County Died-April 18, 1937 @ 46 years-Township # 7 Husband of Bulah Roseborough Father-Abram Roseborough-Fairfield County Mother-Unknown Buried at Purity</p> <p>Roseborough Eddie Mt. Pisgah Baptist Born-August 1, 1886 Died-April 17, 1937</p> <p>Roseborough Elizabeth Evergreen Memorial Born-August 7, 1916 Died-August 19, 2006</p> <p>Roseborough Emma D. Mt. Pisgah Baptist Born-February 12, 1866 Died-January 1, 1995</p> <p>Roseborough Frank St. Mark Baptist No Dates</p> <p>Roseborough Harold A. Good Hope Baptist Church Born-January 18, 1956 Died-August 2, 1997</p> <p>SSN Index Born-January 18, 1956 Died-August 2, 1997</p> <p>Roseborough Hattie Mt. Pisgah Baptist Died-February 3, 1923</p> <p>Roseborough Hester B. Mt. Pisgah Baptist Born-July 4, 1876 Died-October 7, 1945</p> <p>Roseborough Infant Son Death Certificate Richland County-2354 Born-January 22, 1937-Columbia, S.C. Died-January 26, 1937-Columbia, S.C. Father-Thomas C. Roseborough-Fairfield County Mother-Ruth Williams-Horie (Horry) County, S.C. Buried in Ridgeway, S. C.</p> <p>Roseborough Isabell St. Mark Baptist No Dates</p> <p>Roseborough Jake Death Certificate Fairfield County-16595 Born in Fairfield County Died-September 10, 1919 @ 73 years-Township # 1 Father-Jim Roseborough-Fairfield County Mother-Unknown Buried at Hessian Hill</p> <p>Roseborough John E., Jr Weeping Mary Baptist-White Oak Born-Oct 11, 1965 Died-Mar 10, 2001</p> <p>Roseborough Josephine Good Hope Baptist Church Born-October 3, 1920 Died-March 20, 1988</p> <p>SSN Index Born-October 3, 1920 Died-March 20, 1988</p> <p>Roseborough Laura Shady Grove AME Born-March 11, 1883 Died-February 29, 1976</p> <p>SSN Index Born-March 11, 1883 Died-August 1976</p> <p>Roseborough Lula J. Mt. Pisgah Baptist Born-March 20, 1915 Died-October 13, 1941</p> <p>Roseborough Maggie R. Bible Light Holiness Church Born-August 8, 1932 Died-March 17, 2005</p> <p>SSN Index Born-August 8, 1932 Died-March 17, 2005</p> <p>Roseborough Malord Death Certificate Richland County-10364 Born-S. C. Died-July 12, 1933 @ 17 years-Columbus, S. C. (Columbia) Father-John Roseborough-S. C. Mother-Leitha Smith-S. C. Buried in Ridgeway, S. C.</p> <p>Roseborough Mary Death Certificate Fairfield County-2288 Born-January 6, 1935-Fairfield County, S.C. Died-February 12, 1935-Township # 7 Father-Andrew Roseborough-Fairfield County, S.C. Mother-Mary Lawhorn-Fairfield County, S.C. Buried at Good Hope</p> <p>Roseborough Maser Death Certificate Fairfield County-543 Born-September 15, 1932-Fairfield County Died-January 21, 1933-Township # 24 Father-Caesar Roseborough-Fairfield County Mother-Sylvan Woodward-Fairfield County Buried at St. Mark</p> <p>Roseborough Obe SSN Index Born-September 15, 1883 Died-December 1974</p> <p>Roseborough Preston Mt. Pisgah Baptist Born-June 12, 1870 Died-August 13, 1970</p>
-----------------	--

Valeria Prophet

Roseborough Sylvia St. Mark Baptist Born-1884 Died-1952

Roseborough Walter Death Certificate Fairfield County-3468 Born-Fairfield County Died-March 4, 1937 @ 49 years-White Oak Husband of Alice Roseborough Father-Willie Roseborough-Fairfield County Mother-Martha Young-Fairfield County Buried at White Oak

Roseborough Walter Shiloh First Presbyterian Born-September 1, 1956 Died-June 23, 1984

Roseborough Walter Weeping Mary Baptist-White Oak Born-Dec 10, 1899 Died-July 28, 1967

Roseborough Walter Death Certificate Fairfield County-3782 Born-Fairfield County Died-March

16, 1934 @ about 35 years-Township # 14 Husband of Gussie Roseborough Father-Willis

Roseborough-Fairfield County Mother-Philas McCary-Fairfield County Buried at Missions

Roseborough Walter Oaklawn Born-August 30, 1928 Died-December 23, 1991 On stone with Charity Roseborough

Roseborough Walter J. SSN Index Born-January 3, 1947 Died-September 7, 2008

Roseborough William Death Certificate Fairfield County-3467 Died-March 4, 1937 @ about 75

years-Township # 7 Husband of Phillis Roseborough Father-willis Roseborough Mother-Unknown Buried at Small Chappell

Roseborough William St. Mark Baptist Born-January 1, 1877 Died-July 31, 1946

Roseborough Willie Mt. Pisgah Baptist Born-September 2, 1916 Died-August 12, 1940

Roseborough Willie, Sr. Good Hope Baptist Church Born-March 20, 1920 Died-September 8, 1999

SSN Index Born-March 20, 1920 Died-September 9, 1999

Rosebough Andy Death Certificate Fairfield County-18289 Born-1878-Fairfield County Died-November 27, 1927-Winnsboro Father-Andy Rosebough-Fairfield County Mother-Maey Espeen-Fairfield County Buried in Winnsboro

Rosebough Clarence Albert Death Certificate Fairfield County-8403 Born-December 31, 1923-

Fairfield County Died-May 19, 1924-Township # 14 Father-Arther Rosebough-Fairfield County

Mother-Carrie Homes-Fairfield County Buried at Nazzars Cemetery

Rosebough Walter Death Certificate Fairfield County-20111 Born in S. C. Died-November 20, 1926

@ about 40 years-Ridgeway, S. C. Father-William Rosebough-S. C. Mother-Virginia Marshall-S. C.

Buried in Ridgeway

Sawyer Mose Death Certificate Fairfield County-2196 Born-Fairfield County Died-February 20,

1931 @ 35 years-Winnsboro Father-Luke Sawyer-Fairfield County Mother-Mare Jane

Roseborough-Fairfield County Buried in Winnsboro

Squirewell Infant Daughter Death Certificate Fairfield County-5527 Born-April 13, 1935 Died-April

14, 1935-Township # 7 Father-Abbot R. Squirewell-Fairfield County Mother-Florence

Roseborough-Fairfield County Buried at St. Mark Church

Starks Phil Death Certificate Fairfield County-2295 Born-October 20, 1914-Fairfield County

Died-March 19, 1915 Father-Phil Starks-Fairfield County Mother-Floride Roseborough

Fairfield County Buried in Winnsboro, S. C.

Watkins Andrew Death Certificate Fairfield County-16656 Born-Fairfield County Died-November

24, 1935 @ 43 years-Winnsboro, S. C. Husband of Mary Wopthia Father-Steve Watkins-Fairfield

County Mother-Nahalie Roseborough-Fairfield County Buried at Nazahah

Q.The individuals listed below are not my relatives...I've already completed the research that shows my relatives dating back to 1880 in Fairfield, per the 3-page attachment. Page #3 is a copy of the Township 5, Fairfield County, South Carolina Census from 1880 with my relatives. I have been able to trace our family and the various spellings of their last names and their children's offspring from Fairfield, South Carolina, to Peters Island, Arkansas, and throughout the U.S. to the present day...except for what happened to Robert Qualess??? Initially, Robert went to Arkansas with the family to purchase land but then returned back to South Carolina or to Tennessee with the other set of Qualess. We don't know where he dies, we don't know when he died, or what household he lived in after the 1880 Census??? I am looking for: What specific city or town did

Valeria Prophet	<p>a place where the family lived? What happened to Robert Qualess (Born 1841)?? Any documents</p> <p>A. I was not able to find any additional information for the questions above.</p> <p>The person named Qualis Eliza may possibly be a relative? An Eliza Qualess is listed with the only other Qualess in Fairfield, Township 5, in the 1880 Census, born in 1835. Do you have additional information on Eliza Qualis or Eliza Qualess or others in the household like Jeff, James, Joe, Hetty, or John? <i>Qualis Eliza Newspaper Died on the 6th at the home of her son-in-law, James Martin of Flint Hill February 22, 1888 Issue</i></p> <p>A. I have not been able to find any other information.</p> <p>Q.Can you tell me more about this family listed below?</p> <p><i>Ridgers Charley Death Certificate Fairfield County-544 Born-Fairfield County Died-January 24, 1933 @ about 56 years-Strother Husband of Hattie Rodgers Father-Ned Rodgers-Fairfield County Mother-Sara Lyles-Fairfield County Buried at Hopewell</i></p> <p>A. All of the Rodgers information was sent in a previous email. I was not able to find any information on Ridgers family.</p> <p>Q. Can you tell me where I can find the names of the Plantation Slave Holders in Township 5, Fairfield County, South Carolina in the 1870s - 1880s?</p> <p>Best chance would be the Freedman's Bureau on Ancestry.com We have been very busy lately, I need to give some time to other tasks and members. For one, it is time for 3<sup>rd</sup> Qtr. Newsletter and I have several articles that I supply the newsletter editor. Give me some more time and I will see if I can find this out. We need to locate the plantation owners in Township 5 first. Then we may be able to find information in the plantation owners will information or slave schedules. We have an ancestry.com account and once we know who for sure we are looking for possible find some information from Freedman's Bureau records.</p>
Guerry and Don Taylor	<p>Q. We want to find out information on the Sessions, John and Fanny Coleman Family, as well as Fogg family relations. It is our understanding that the Colemans arrived from Virginia about 1800. Our progenitor Samuel Sessions married Nancy Coleman about this time and in the 1810 census they had 3 boys. Our progenitor Thomas Coleman Sessions was born about 1817-20. Early church affiliations would be the Poplar Springs Church. These families lived in central/eastern Fairfield County, usually near the Kershaw County line. Thomas Coleman Sessions had a plantation (Fair Oaks?) on the county line just inside Kershaw County when Sherman came through. He ultimately made claims against the US Government for reparation but was unsuccessful. Some names we would like to know something about: Wiley Davis Plantation Wiley Coleman Poplar Springs Baptist Church (cemetery survey?) Longtown Cemetery (cemetery survey?)</p> <p>A. The Taylor's visited and we assisted them in obtaining some information with the Coleman, Sessions, Plantation and Church Records, etc.</p>

## Books Donated to the FAIRFIELD COUNTY GENEALOGY SOCIETY

(For Fairfield County Family Resource & Research Library)

- Next 254 books, data sheets & notebooks (more to come) from the "Robert Hill, Sr." Collection donation
- Illustrated Tales of the Civil War** by Norman Shavin
- The South Carolina Magazine of Ancestral Research** by Lawrence K. Wells  
(Volumes IV-VII 1-4, IX-XV 1-4, XX 3-4, XXI 2-3, XXII-XXIV 1-4, XXV-XXVI 1-3, XXVII 3-4)
- Robert and Joseph Hill, Two Sons of Henry Hill of Frederick, Maryland** by L. P. Hill, Jr. and Anne H. Hill
- The New World Book of Hills** by Halberts Family Heritage 1998
- Henry Hill (1695-1773) OF Frederick, Maryland and Two Great-Grandsons Benjamin Shaw Hill (1782-1855) of Bothes Creek, Marion County, WV & Thomas Hill (1782-1846) of McKim Creek, Tyler County WV**  
by Lycurgus Perry Hill, Jr. & Anne H. Hill  
by Rebecca Echols Perry 1983
- Nehemiah Howard and His Family**
- Terry Family Historian 1982-1987**
- Mississippi Terry Records 1810-1860 Census Marriage to 1920** by L. P. Hill, Jr. and Anne H. Hill
- The Hill Family** by American Genealogical Research Institute 1975
- Hill Information** by Shirlene 1991
- Sussex County Virginia Will Books A-F 1754-1806** by William Lindsay Hopkins 1990
- Woodwards of Colonial America Volume I Some Descendants of Lance Lott and Elizabeth (Cocke) Woodward of Busland Parish, New Kent and James City Counties, Virginia** by J. Gary Wooward 1993
- Family Puzzlers 1039 (9/17/87), 1237-1378 (7/4/92-3/18/95), 1380-1382 (4/1/95-4/15/95)**  
by Heritage Papers, Athens, GA
- Fairfield County Cemeteries Volume I (Western Section of County)** by Jon Davis
- Fairfield County Cemeteries Volume II (Eastern Section of County)** by Jon Davis
- Fairfield County Cemeteries Volume III (Abandoned and Family Burial Grounds, Other Church Cemeteries)** by Jon Davis
- AGLL Catalog Volume I & Volume II Fourth Edition Military Records and Ship Passengers Lists**  
by AGLL (American Genealogical Lending Library)
- Richland District South Carolina Land Records 1785-1865** by Tony Draine & John Skinner 1986
- Cemetery Records of Greene County Alabama and Related Areas 1980, The Journal of Mrs. Mary Marshall**  
edited by O'levia Neil Wilson Wiese
- Hill Family Records** by S. A. Perry
- The Hill Family of Jonathon, Thomas 1750-1837 from South Carolina to Tennessee to Kentucky Book Three**  
by James Leslie Hill, Sr. 1990
- Hill & Hill-Moberly Connections of Fairfield County, South Carolina** by George A. Hill 1961
- Woodard Data (Family Group Sheets)** by Robert Hill, Sr.
- Hill Data (Wills)** by Robert Hill, Sr
- Hill Data (Family Group Sheets)** by Robert Hill, Sr
- Hill Data (Misc.)** by Robert Hill, Sr
- Hill Data (Census)** by Robert Hill, Sr
- Hill Data (North Carolina)** by Robert Hill, Sr
- East Goes West (History of Craft-Hill-Harris and Deshazer-Faubion-Douglass-Howlett Families)**  
by Alta Deshazer Craft, assisted by George W. Craft  
by Kentucky Genealogical Society
- Bluegrass Roots Newsletter 1986 1-4** by Robert "Mike" Terry
- The Terry Family Historian Volume 5 Number 4 December 1986** by Chester District Genealogical Society
- The Bulletin 1987 Membership and Surname Book** by Chester District Genealogical Society
- The Bulletin 1989 Vol. XII No. III & IV, 1990 Vol. XIII No. I** by Chester District Genealogical Society
- John Barrett of Hall County, Georgia and His Kin** by James P. Barrett

Next 7 books and Binding Machine and Supplies**Fairfield County, South Carolina Wills 1773-1797****Chester County, South Carolina Will Book A****South Carolina Postcards Volume V Richland County****Legendary Locals of Fairfield County****Columbia & Richland County A South Carolina Community, 1740-1990****History of Fairfield County, South Carolina****The Key Family – Deep Roots In Chesterfield County, South Carolina****Spiral Book Binding Machine and Supplies**

from Kathleen Hart &amp; Jacqueline Broom LaFreniere

by Elizabeth Wood Thomas, C.G. and Sydney Starr Furr

by Elizabeth Wood Thomas, C.G.

by Howard Woody

by Virginia Schafer

by John Hammond Moore

by William Ederington, B. H. Rosson

by Dr. Gene C. Key

Next 172 books**Tidewater Virginia Families A Magazine of History and Genealogy****Volumes 3-12 Numbers 1-4 (1994-2003) (40 books)****Magazine of Virginia Genealogy****Volumes 32-53 Numbers 1-4 (1994-2015) Indexes (1994-1996) Volume 54 Number 1 (2016) (92 books)****The North Carolina Genealogical Society Journal****Volumes 9-28 Numbers 1-4 (1993-2002) (40 books)**

from Ken Baldwin

by Virginia Lee Hutcheson Davis

by Virginia Genealogical Society

by North Carolina Genealogical Society

Next book**The Durhams of Fairfield: An African American Genealogy**

from Pelham Lyles

by Robert I. Uzzel, Ph.D.

Next book**236 Ancestors of the children of Eldon and Florence Hankins**

from Edith Jackson Hankins

by Edith J. Hankins &amp; Roberta Hankins Cowart

Next book**Alexander William Yongue and Mary Ann Ellison of Fairfield County, South Carolina and Marion County, Florida with Related Families**

from Billy Buchanan

by Susan Coleman and Amanda Penn "Mannie" Devore Gibson

Next 6 books**Plantation Tales**

from Loretta Gleaton Killian

by Nancy Rhyne

**Low Country Voices What Coastal Back Roads Folk Told Me of****Ghosts, Sea Captains, and Charleston Jazzmen**

by Nancy Rhyne

**Back of the Big House The Architecture of Plantation Slavery**

by John Michael Vlach

**The 1790-1890 Federal Population Censuses Catalog of National Archives Microfilm**

by National Archives Trust Fund Board

**Your Guide to the Federal Census for genealogists, researchers, and family historians**

by Kathleen W. Hinckley

**Membership Roll for Bullock's Creek Presbyterian Church 1860-1916****Bullock's Creek York County, South Carolina**

by Reverend Jerry L. West



**Maternal Pedigree Chart for Jefferie Ray, daughter of Ethel Anne HARVEY**

**1 Ethel Anne HARVEY**

b: 23 Sep 1909 in Raleigh, W...  
 m: 22 Jun 1946 in San Diego,...  
 d: 24 Sep 2004 in Victorville, S...  
 Also Known As: ; Anne  
 Military Service:  
 Occupation:  
 Cause Of Death: ; Cardio Pulmo...

**2 Walter Alexander HARVEY**

b: 03 Dec 1879 in Pineville, M...  
 m: 07 Jan 1899 in Wake, North...  
 d: 01 Nov 1925 in Raleigh, W...  
 Also Known As:  
 Military Service:  
 Occupation: Bet. 1900-1930 in R...  
 Cause Of Death: ; Post surgical:...

**3 Julia Elvira EATMAN**

b: 17 Jul 1880 in Taylors Township, Wilson, North Carolina  
 d: 04 Jun 1941 in Raleigh, Wake, North Carolina, USA; Buried at Oakwood Cemetery; Raleigh, Wake, North Carolina, USA

Also Known As:  
 Military Service:  
 Occupation:  
 Cause Of Death: ; Cardiac failure

**4 Captain James Mellon HARVEY**

b: Abt. 1834 in Fairfield District,...  
 m:  
 d: 11 Jun 1889 in Clover, York,...  
 Also Known As:  
 Military Service: 1861 ; Civil War:...  
 Occupation: ; Farmer  
 Cause Of Death:

**5 Martha Rebecca STEPHENSON**

b: 14 Feb 1844 in York District, South Carolina, USA  
 d: 21 Oct 1918 in Charlotte, Mecklenburg, North Carolina, USA; Buried at Elmwood Cemetery; Charlotte, Mecklenburg, North Carolina, USA

Also Known As: ; Mattie  
 Military Service:  
 Occupation:  
 Cause Of Death: ; Senile debility with secondary mitral insufficiency.

**6 Woodson C. EATMAN**

b: Abt. 1847 in Nash, North Carolina USA  
 m:  
 d: 27 Oct 1914 in Raleigh, Wake, North Carolina USA;  
 Age: 70  
 Also Known As:  
 Military Service:  
 Occupation: ; Farmer  
 Cause Of Death: ; Paralysis of respiratory center due to cerebral aneurism

**7 Elmira W. THOMPSON**

b: Abt. 1847 in Taylors, Nash, North Carolina USA  
 d: Abt. 1896  
 Also Known As: ; Sallie  
 Military Service:  
 Occupation:  
 Cause Of Death:

**8 Archibald David HARVEY**

b: Abt. 1798 in Fairfield District,...  
 m:  
 d: York, South Carolina or Pine...  
 Also Known As: ; David or Duff  
 Military Service:

**9 Sarah Jane BEAMGUARD**

b: 1810 in Fairfield District, Sout...  
 d: 29 Oct 1862 in Clover, York,...  
 Also Known As:  
 Military Service:  
 Occupation:

**10 David STEPHENSON**

b: 28 Feb 1795 in York District,...  
 m: 10 Dec 1818 in York District,...  
 d: 29 Jan 1881 in Kings Mtn. Y...  
 Also Known As:  
 Military Service: 1812 in South C...

**11 Elizabeth MCCULLOUGH**

b: Abt. 1798 in York District, S...  
 d: 04 Mar 1890 in Kings Mtn. Y...  
 Also Known As:  
 Military Service:  
 Occupation:

**12 Name:**

b:  
 m:  
 d:  
 Also Known As:  
 Military Service:

**13 Name:**

b:  
 d:  
 Also Known As:  
 Military Service:  
 Occupation:

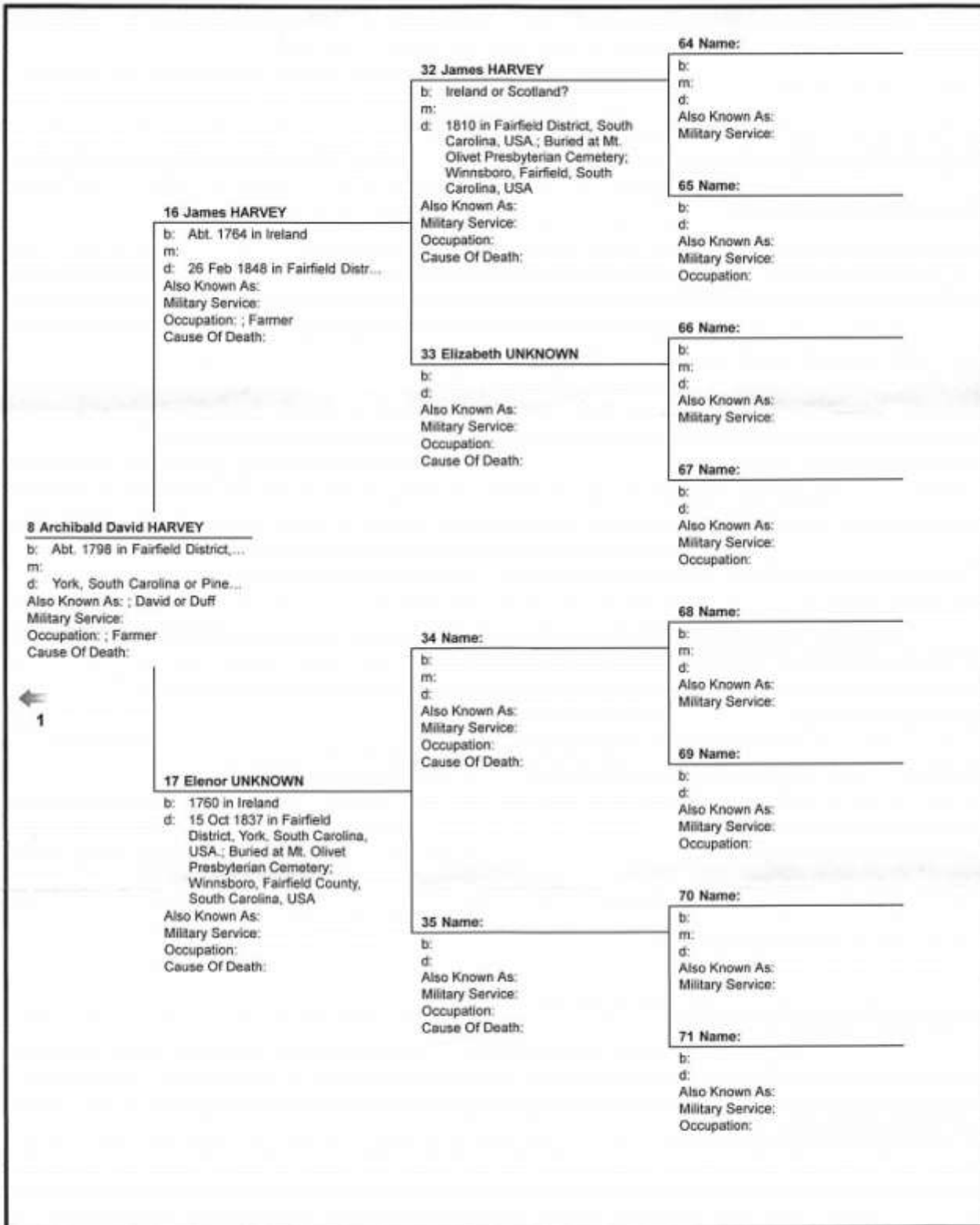
**14 Name:**

b:  
 m:  
 d:  
 Also Known As:  
 Military Service:

**15 Name:**

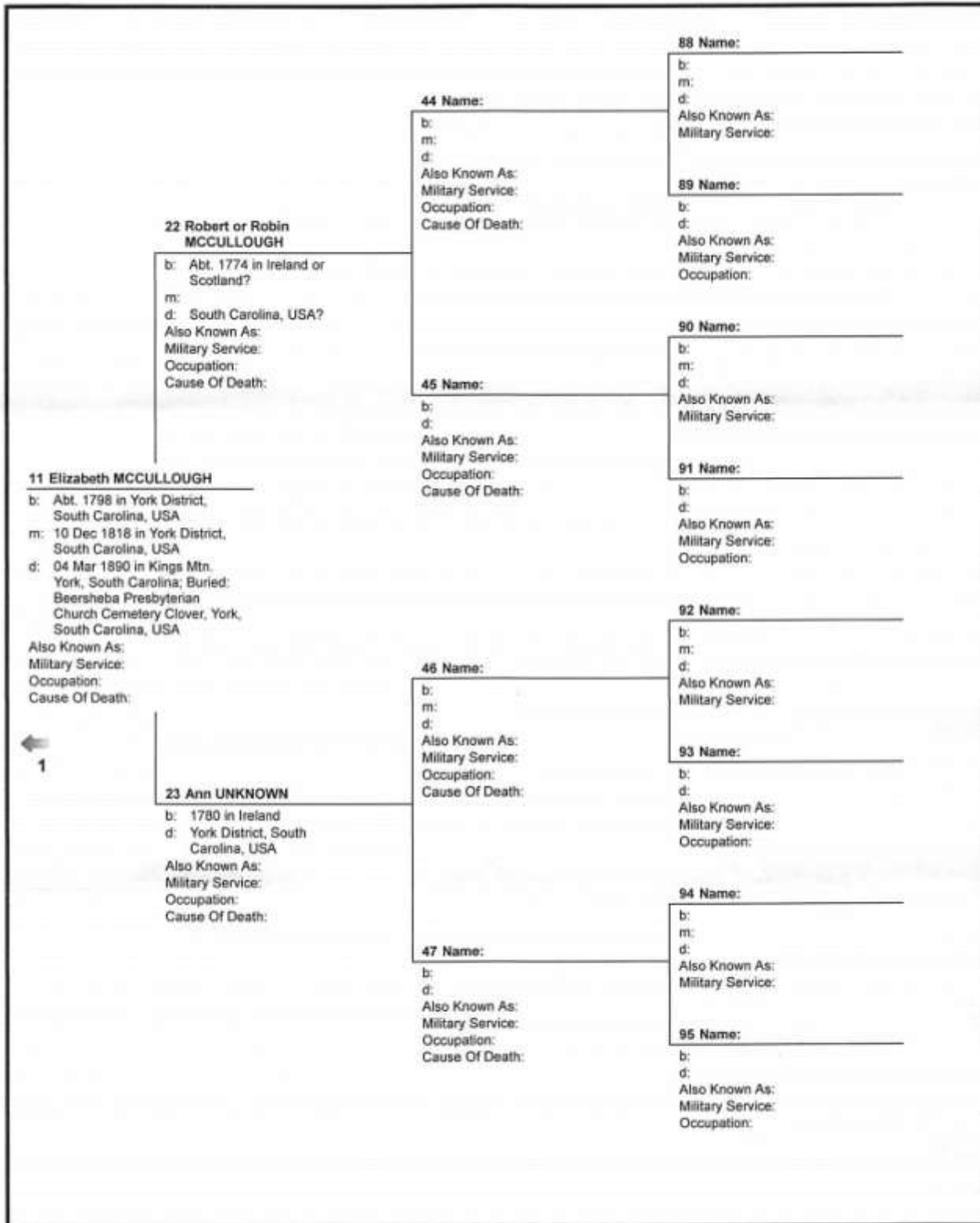
b:  
 d:  
 Also Known As:  
 Military Service:  
 Occupation:

The Eatman-Thompson's are in another Tree.  
 Should you need any other additional information please contact me at gardens4us@bak.rr.com.  
 Created with Family Tree Maker - Wednesday, April 20, 2016



The Eatman-Thompson's are in another Tree.  
 Should you need any other additional information please contact me at gardens4us@bak.rr.com.  
 Created with Family Tree Maker - Wednesday, April 20, 2016

<p><b>18 Godfrey BEAMGUARD</b>                  b: 1784 in Germany                  m: Bet. 1779–1924 in South Carolina                  d: 31 Aug 1839 in York District, South Carolina, USA; Buried at Olde Center Presbyterian Cemetery; York, South Carolina                  Also Known As:                  Military Service:                  Occupation: ; Stone cutter                  Cause Of Death:</p>	<p><b>36 Name:</b>                  b:                  m:                  d:                  Also Known As:                  Military Service:                  Occupation:                  Cause Of Death:</p>	<p><b>72 Name:</b>                  b:                  m:                  d:                  Also Known As:                  Military Service:</p>
<p><b>9 Sarah Jane BEAMGUARD</b>                  b: 1810 in Fairfield District, South Carolina, USA.                  m:                  d: 29 Oct 1862 in Clover, York, South Carolina, USA; Buried at Olde Center Presbyterian Cemetery; York, South Carolina                  Also Known As:                  Military Service:                  Occupation:                  Cause Of Death:</p>	<p><b>37 Name:</b>                  b:                  d:                  Also Known As:                  Military Service:                  Occupation:                  Cause Of Death:</p>	<p><b>73 Name:</b>                  b:                  d:                  Also Known As:                  Military Service:                  Occupation:</p>
<p>←  <b>1</b></p>	<p><b>38 Name:</b>                  b:                  m:                  d:                  Also Known As:                  Military Service:                  Occupation:                  Cause Of Death:</p>	<p><b>74 Name:</b>                  b:                  m:                  d:                  Also Known As:                  Military Service:</p>
<p><b>19 Susannah EDMONDS</b>                  b: 1791 in North Carolina                  d: 05 May 1856 in York District, South Carolina, USA; Buried at Olde Center Presbyterian Cemetery; York, South Carolina                  Also Known As:                  Military Service:                  Occupation:                  Cause Of Death:</p>	<p><b>39 Name:</b>                  b:                  d:                  Also Known As:                  Military Service:                  Occupation:                  Cause Of Death:</p>	<p><b>75 Name:</b>                  b:                  d:                  Also Known As:                  Military Service:                  Occupation:</p>
		<p><b>76 Name:</b>                  b:                  m:                  d:                  Also Known As:                  Military Service:</p>
		<p><b>77 Name:</b>                  b:                  d:                  Also Known As:                  Military Service:                  Occupation:</p>
		<p><b>78 Name:</b>                  b:                  m:                  d:                  Also Known As:                  Military Service:</p>
		<p><b>79 Name:</b>                  b:                  d:                  Also Known As:                  Military Service:                  Occupation:</p>



The Eatman-Thompson's are in another Tree.  
 Should you need any other additional information please contact me at gardens4us@bak.rr.com.  
 Created with Family Tree Maker - Wednesday, April 20, 2015

### MEMBERS AND THEIR SURNAMES

This list is not all inclusive. If you do not see your name or if the surnames for you need to be revised, please contact us so we can update our records. We will include them in the next newsletter. Please let us know if you would like to correspond with one of our members. Thanks!

Aragon	Damien E.	Colvin, Conway, Crosby, Davis, Cornwell, Jagers, Hitchcock
Agnew	Clinton	Agnew
Alston	Lloyd	
Andel	Jo	Arledge, Bell, Cloud, Cobb, Ferguson, Hannah, Delphia wife of Tyrus Bell b. 1799
Anderson	Robert Wayne	Ford, Nichols, Peay, Weir, Robinson, Montgomery, Anderson, Robbins, Gaither, Cloud
Andrews	Bryan Scott	Andrews, McGraw
Andrews	Jack and Mary	Andrews
Aragon	Damien	
Baird	Paula	Hamiter, Turnipseed (Rebasmen), McKinstry (Mckinstree), Wafer, Harrington, Fields, Hamblen, Lake, Norris, Reavis, Kenemore
Bauer	William R.	Elliott, Duesto, Kennedy, Doud/Dowd, Richardson, Cato, Blizzard, Boyd
Banton	Susan	Gibson
Baughman	James H.	Baughman, Corley, Jennings
Bennett	Sandra	Neeley, Ralph Jones
Blackwell	Gloria Douglas	Shedd, Gladney, Rabb, Crosby, Coleman, Brown, Pritchett, McMaster, Montgomery, Grier, Mills, Henry, Bell, Carson, Chappell, Wilkes, Bigham, Mills, Watson
Blair, Jr.	Robert C.	Blair, Coleman, Owens, Jones, Jennings, Wicker
Boyd	Sally Lonerf	Loner, Duncan, Alewine
Branham	Vikki	Branham, Smith, Martin, Watts, Lail, Kelly, McDowell
Brown	Nancy L.	Lyles, Moseley (Kershaw), Blackmon (Kershaw), Irby, Kincaid, McMorries, Watt, Henderson, Eichelberger, Summer, McDonald, Stewart (Lancaster Co.) (nothing on 2016 form)
Bruckner	Jane Austin	Austin (Bartholmew & Elizabeth Austin of Fairfield Co.)
Cain	Mary Hancock	
Campbell	Louis	
Cannon	Bobbie Jean	Wilson(James Robert), Powell (Cader Roy and John)
Carr	Beth Little	Carr
Carroll	Jerolyn	Coleman, Davis, Gibson, Hines, Buchanan
Clark	Ellen B.	Boulware, Coleman, Mobley, Stevenson, Traylor, Wilkes
Clarke	Peter A.	Clarke, Woodward
Cooper	Charlene	Nelson, Turner, Woodward
Cooper	Dorothy Timms	Timms, Young, Yongue
Cornish	Sharon L.	Ballard, Thomas
Courtney Cox	Linda	Winn
Daniels	Deborah	Barker, Price, Franklin
Davis	Jonathan E.	Brown, Roberts, Boyd, McDill, McGraw, King, Poag, Starnes
Delleney, Jr.	F.G. (Greg)	Delleney, Nelson, Woodward
Deroo	Paul W.	Deketeleare, Ranson
Dixon	Martha E.	Bailey, Brasington, Buckner, Caldwell, Coleman, Collins, Crosby, Cunningham, Dancy, Davis, DeLashmette, DeRull, Dixon,

		Douglas, Dye, Gaddish, Gibson, Grayson, Heath, Jackson, Lee, Lifrage, Mabrey, McCross, McDonald, McMeekin, Middleton, Mobley, Moore, Poole, Pritchard, Robertson, Sterling, Stover, Tapley, Thomas, Thorn, Waggoner, Williams, Williamson, Woodward, Wyche
Douglass	Francis "Marion"	Douglass, Shedd, Gladney, Rabb, Crosby, Coleman, Brown, Pritchett, McMaster, Montgomery, Grier, Mills, Henry, Bell, Carson, Chappell, Wilkes, Bigham, Mills, Watson, Chapell
Duke	Julius	Richardson, Simpson, Dunlap, Crossland
Duncan	Judith Dancy	
Elkins	Linda	Aiken, Blair, McConnell
Faile	Pam	Humphries
Ferguson	Alan & Nancy	Culp, Ferguson, Hyatt
Floyd	Margaret Y.	Cureton, Ladd, Yongue
Ford	David & Amanda	Ford
Foster	Marilyn Sue	Barker, Gregory, Liles
Frazier	Linda	Meeks, Sellers, Frazier
Garland	Audrey A.	Ford, Nichols, Keistler, Dye, Robinson, Anderson, Cloud, Gaither, Gladden
Geibner	Green	
Gehring	Joan M.	Gladden, Hollis, Gibson, Morrison
Gibson	Freda	Gibson, Zachariah
Gibson	Marvin	Gibson
Glenn	Mary Martin	Ben Hoyt, Glenn, Cooper, Allen
Graves, III	William H.	Crawford, Crowder, Dye, Stovall
Green, III, James W <b>Terminal Y-SNP</b> Broom R-Z16245, Powell, R-BY2744, Coleman G-CTS11352, Roe, Robinson/Robertson R-YP1211 Banks/Marjoribanks R-A5616, Ragsdale R-Z8, Cameron, Green R-S16701. Mathis I-L205		
Graves, III	William H.	Crawford, Minter, Dye, Crowder, Stovall
Grubbs	Dwight	Grubbs - Enoch/William
Green	Pamala	Duke, Raines, Turner, Wilson
Hesler	Julia Palmer	
Hancock	Patricia Ann	
Henderson	Hattie	Starke, Mickle, Brown, Davis, Broom
Hill, Jr.	Robert Ray	Hill, Woodward
Hobby	Gwen	Blackmon, Campbell, McCullough, Sexton
Hollis	John	Hollis, Hood, Watts, Dowey
Hollis	Mary Ann	Ladd, Hentz, Cromer, Owings, Lemmon, Lauderdale, Bundrick, Closson, Cooper, Corbitt, Halfacre, Hoover, Lake, Sligh, Wicker
Hornsby	Benjamin	<i>Hornsby, Corley, Hayes, Lever, Leitner, Ruff, Pearson, and Raiford</i>
Howell	John J.	Mobley, Shannon, Roberts, Pannell, Wagner, DeLashmette, Lee, Wages
Hoy	Nancy	Hoy
Hughes	Karol	Curlee, Elliott, Gibson, Jennings, Leitner/Leightner, Robinson, Rosborough, Turnipseed
Hunter	William	
Irvin	Faye Kennedy	Alexander Kennedy and associated families

Johnson	Suzanne P.	
Jones	Alice Ball	Cameron, Cockrell, Griffith, Jennings, Mabry, Poole, Yongue
Jones	Janice	McCreight
Killian	Robert E.	Killian, Taylor, Lyles, Mobley, Mabry, Fox, Mathis, Coleman, Poole, Chapman, Roe, Rainey, Perry
Kinard	Glenna	SC - Cobb, Gill, Harrison, Dargan, Higgins, Scott, Rutledge, Beasley, Fetner, Scott, Martin, McCants, Porter, Rawlinson; NC/SC - Baxter, Bryant, Dillard, Eaves, Hampton, Lee, McDade, Tolleson, Wells GA/LA/AK/TN/TX/SC Dismukes, Hubbard, Latta (Branch 28), Jenkins, Harmon, Petty, Garton, Phelps, Poe, Morton, Kinard, Long/Lang, Mauldin, Patton, Thaxton, Vickers, Wilkins, McFadden, Wise, Rogers, Proctor, Andrews, Barnes, Sowersby, Kelly, Lightfoot, Browder, Fisher, Owen
Kinsler	Brenda K.	Kinsler, Howard, Crowell, Adams, Stevenson, Leightner
Kirby	Carol S.	
Laird	Pam	Kennedy
Lewis	Hugh B.	
Lippe	Anne	Robertson, "Coutunier", LeGore
Lyles, III	James M.	Lyles
Lyles	Pelham	Allen, Brown, Boozer, Burr, English, Dunlap, Gantt, Hancock, Harrison, Hay, Lawson, Lyles, Lynisson, McCaw, McGehee, Morris, Pearce, Peay, Pehlman, Russell, Skinner, Shillito, Todd, Tyler, Witherspoon, Wood, Woodward
Mallory	Lauren Scott	DuBard, Ruff, Elkin, Pearson, Raiford, Weston, Hamiter/Hammiler, Turnipseed, Rebsamen, Kinsler/Kuntzler
Matthews	Gregory W.	Mathews/Mathews/Mathis, Owen/Owens, Hutcheson/Hutchinson, Bradford, Cameron, Lewis
Matthews	R. Wayne	
McCorvey	Ann Ragsdale McCormick McCorvey	Ford, Ragsdale
McCully	James	McCully
McKinstry	Jimmy Leroy	McKinstry, Alston, Boyd, Mobley, Bonner, Taliferro
McNabb	Anna Beth	Moore/Moore
Miller	Brenda Cromer	Groce, Mitchell
Milligan	Stephen Lee	Baird, McCreight, Robinson, Bell, Young, Paul
Montgomery	Dave	Brown, Clarke, Cameron, Gladney, Kennedy, Long, McCreight, Watson, Yongue, McClurkin, Mobley, Moore, Murrell, Robertson, Sease, Stevenson
Morgan	Mary F.	Arledge, Bell, Colston, Featherston (e), Ginn, Hancock, Riley, Shumate, Stroud
Nuckolls	Stephen W.	Durphy/Dufphey, Carson, Gamble
Oliver	Mary Anne	Bolick, Burley, Clowney, Crawford
O'Neal	Frances L.	Beam, Lee, Mickle, Roof (Ruff), Pitman, Pittman, Pitmon
Paul	Verna L.	Paul, McNeil, Young
Peay	Celeste	Peay
Perry	Warren	Perry, Jeffers

Petroff	Julie	Fripp, Harden
Pope	Natalie Adams	Carroll, Pope, Porter, Boycl, Adams, Lippard, Morrison
Prophet	Valerie	"Qualls"
Raese	David S.	Yarborough, Sims, Haigood, Steele, Hamilton, Paul, Russell, Gradick, Wirick, Leither, Andrews, McGraw
Ray	Jefferie L.	Harvey, Eatman, Thompson, Stephenson, Beamguard, McCullough, Edmonds
Roberts	William	Clark, Halsell, Hartin, Roberts, Wages
Roseborough	Dr. E. Marie	Roseborough, Douglas, Kennedy, Craig, Cubit, Neil, Bell, Crosby, Rabb, Shedd, McMeekin, Hudson, Banks
Sample		Harden
Sarpas	Delores	
Sears	Randy P.	Young, Curry
Sexton	Sarah T.	Timms, Minton
Sims	Michael & Shamieka	Bairefoot, McMurry, Sims (Michael); Brown, Chapman, Johnson, Yarborough (Shamieka)
Shelton	Kenneth K.	
Stevenson	Lee	Stevenson
Stinson	John H.	
Stowers	Greg	Pollard, Goff, Stowers, Inabinet, Redmon, Burnett
Sung	Carolyn	Aiken, Bankhead, Ford, Gibson, Gladden, Hollis, Wiley/Wylie, Wilson
Taylor	Diahn	Taylor, Ford, Leitner, Sampson, Jones, Gradic
Taylor	Guerey	Sessions, Easler
Taylor	Vicky (Killian)	Chapman, Coleman, Crosby, Fox, Killian, Lyles, Mobley, Mabry, Mathis, Perry, Poole, Roe, Rainey, Taylor
Torres	Danielle	Gaither, Jones, Gibson
Tupper	Carolyn Shuford	Smith, Bookman, Goodwyn, Ashford, Chappell, Lever, Hamiter, Hendrix, Souter
Turbyfill	Lula "Sue"	Loner, Loaner, Duncan, Dunkin, Byerly
Turner	Jesse "Mac"	Beam, Blanton, Carter, "Earl", Ethers, Greene, ardin, Irvin, Linder, Lipsconb, Posey, Pryett, Sealy, Turner
Ulmer	Lawrence H,	
VanSant	Richard & Debby	
Vaughn	Phyllis	Dunbar, Stevenson
Vinnacombe	Mary S.	Ladd, Hentz, Cromer, Owings, Lemmon, Lauderdale, Bundick, Closson, Lake, Sligh, Wicker, Halfacre
Wall	William B.	Glenn, McMeekin, Brooks, Thompson, Montgomery, Tidwell, Myers, Mason
Ward	Jon P.	Cloud, Hogan, Little, McCants, Parker, Team, Walker, Wilson, Wood
Webb	Katherine	
Wester	Janet S.	Liles
Westerfield	Patricia Jackson	
White	Darell	Degraffenreid, Hooper, Pratt
Wiggins	Carolyn (Gladney) Powell	Young, Martin, Roseborough, Harvey, Gladney, Nealy (Neely)
Wilder	Linda	Hollis, Isbell, Kendrick, Knighton, Rich, Wilder
Wilson	Donna	Whorter, Yongue
Wilson	Elizabeth (Betty)	Ferrell, Wilson, Cook
Wilson	Susan Skinner	Wilson, Heins, Skinner, Rembert, Mace, LeGette
Withrow	Scott	Goin/Goings/Gowen/Gowan, Withrow, Collins
Wolforn	Linda C.	Dunlap, Richardson, Duren



Woodard	Atqueenella	Woodard, Gaither, McDaniel, Heath
Woods	Janie P.	Price, Garner, Davis, Woods
Wooll	Bobbie (Marshall)	Marshall, Arnett, Aiken, Aikin, Ritchie
Young	James	Dickerson, Gray, Moody, Wilson
Ziervogle	Gene T.	Douglass, Hicklin, Tidwell

## IT'S NOT TOO LATE TO GET ONE OF THE FAIRFIELD COUNTY GENEALOGY SOCIETY TRIVIA CALENDARS!

Trivia taken from: "The Fairfield Herald" and "Fairfield News and Herald."

Examples of trivia:

- Who was involved in a dual in 1876?
- Who was called "the human adding machine" in 1943?
- What happened in the November 16, 1870 train wreck?
- Who lived to be 104 years old, November 20, 1958?
- Who participated in a horse race on August 26, 1874?

*For answers to these questions and over 700 more interesting facts about Fairfield County: get your copy of the calendar for \$10.00 plus postage. These make wonderful gifts; order yours today!*

### ~~~~~ MEMBERSHIP RENEWAL ~~~~~

For our records, please attach to the application your pedigree chart and share any information you have updated on your family lines. The information will be filed and made available in our family files. This will aide to expedite future requests for research and assist walk-in researchers.

Our membership year runs from January 1, current year until December 31, current year; i.e. calendar year. New members (after October 1 of current year) will have membership until December 31, the following year. If dues have not been paid by March 31, current year, you will no longer receive membership benefits.

We would like to welcome you and share with you some of the benefits of being a member. They include the following with no extra charges:

- Society Quarterly newsletters
- Correspondence about upcoming events of interest
- Priority assistance of your email queries in finding your ancestors
- Free research of your queries during membership year (non-members \$15 / request)
- Priority assistance with in library access to Fairfield County research materials
- Free copies (non-members \$.10 / copy)
- Monthly workshops held throughout the year
- Queries published in the newsletters
- 10% discount on books and published materials
- In-library access to Ancestry, Black Ancestry, Family Tree, Fold 3, Genealogy Bank and other organizations
- Contact with people who share our interests in genealogy and history
- Members Only Website information
- Your support for your society activities and projects

**FAIRFIELD COUNTY GENEALOGY SOCIETY  
2016 MEMBERSHIP APPLICATION/RENEWAL**

**RENEWAL: Please make any updates below / NEW MEMBER: Please fill out membership information**

NAME: \_\_\_\_\_ Publish in Newsletter  
 ADDRESS: \_\_\_\_\_ Yes  / No   
 CITY: \_\_\_\_\_ Yes  / No   
 STATE: \_\_\_\_\_ ZIP \_\_\_\_\_ Yes  / No   
 PHONE: \_\_\_\_\_ Yes  / No   
 EMAIL ADDRESS: \_\_\_\_\_ Yes  / No

**MEMBERSHIP DUES AND DESIGNATIONS**

INDIVIDUAL ( ) \$20.00 Color Newsletter Emailed to you  
 INDIVIDUAL+USPS ( ) \$25.00 ( ) Color Newsletter Emailed ( ) B/W Newsletter USPS mailed ( ) Both  
 PATRON ( ) \$50.00 ( ) Color Newsletter Emailed ( ) B/W Newsletter USPS mailed ( ) Both  
 BENEFACTOR ( ) \$100.00 ( ) Color Newsletter Emailed ( ) B/W Newsletter USPS mailed ( ) Both  
 LIFE TIME ( ) \$300.00 ( ) Color Newsletter Emailed ( ) B/W Newsletter USPS mailed ( ) Both  
 SUBSCRIPTION ( ) \$15.00 Organizations or Libraries Only (Emailed Newsletter)  
 DONATION ( ) \$\_\_\_\_\_ Society is a 501-3(c) and all donations qualify as charitable gifts.  
 TOTAL ENCLOSED \$\_\_\_\_\_ Thank you for your membership and support for (y)our society!

**PATRON / BENEFACTOR / LIFE TIME (MEMORIAL or HONORARIUM or PROJECT SUPPORT DESIGNATION)**

( ) MEMORIAL TO ( ) HONORARIUM TO ( ) PROJECT: \_\_\_\_\_

**SURNAMES OR SURNAMES YOU ARE PLANNING TO RESEARCH AND/OR QUERY**

Type of Research Interested: African ( ) - American Indian ( ) - European ( ) - Other ( ) \_\_\_\_\_  
 SURNAME(S): \_\_\_\_\_  
 \_\_\_\_\_  
 QUERY: \_\_\_\_\_  
 \_\_\_\_\_  
 \_\_\_\_\_

Mail Application and Check to: **FCGS or Fairfield County Genealogy Society**  
 P.O. Box 93  
 Winnsboro, SC 29180-0093

For our records, please attach to the application your pedigree chart and share any information you have updated on your family lines. The information will be filed and made available in our family files. This will aide to expedite future request for research and assist walk-in researchers.

Our membership year runs from January 1st, current year until December 31st, current year; i.e. calendar year. New members (after October 1st, of current year) will have membership until December 31st, the following year. If dues have not been paid by March 31st, current year, you will no longer receive membership benefits.

## QUERIES INDEX

- Able, Amanda Lee Walker, 39  
 Able, Anthony, 39  
 Able, Eloise Hudson, 39  
 Able, Etta, 39  
 Able, Harry III, 39  
 Able, Harry Jr., 39  
 Able, Harry, 39  
 Able, James A., 39  
 Able, Lyvonne, 39  
 Able, Melvin, 39  
 Able, Michael, 39  
 Able, Rosa C., 39  
 Able, Rosalind D., 39  
 Able, William, 39  
 Able, Winston, 39  
 Andrews, Bryan Scott, 30  
 Andrews, Edward, 30  
 Andrews, Enoch, 30  
 Andrews, James, 30  
 Andrews, John, 30  
 Andrews, Mathew, 30  
 Andrews, Owen, 30  
 Andrews, Pateance, 30  
 Andrews, Priscilla, 30  
 Andrews, William, 30  
 Arledge (Aldrich), Isaac, 35  
 Arledge, Clement, 35  
 Arledge, Hannah, 35  
 Armstrong, D. Thomas, 39  
 Armstrong, Michael (Sabrina), 39  
 Austin, Missotern, 40  
 Baird, Paula Hamiter, 32  
 Bell, Peggy Ruth, 38  
 Belton, Leatha Walker, 39  
 Roseborough, Bulah, 43  
 Cannon, Bobbie Jean, 33  
 Church – Poplar Springs Baptist, 45  
 Church – St. Matthews Baptist, 33  
 Coleman, Fanny, 45  
 Coleman, John, 45  
 Coleman, Nancy, 45  
 Coleman, Thomas, 45  
 Coleman, Wiley, 45  
 Curry, Renee Armstrong Milton, 39  
 Dellenny, Catherine Turner, 31  
 Dellenny, Catherine, 31  
 Dellenny, Elizabeth, 31  
 Dellenny, Isabella, 31  
 Dellenny, Jesse Robert, 31  
 Dellenny, John, 31  
 Dellenny, Mary, 31  
 Dellenny, Stark Gaines, 31  
 Dellenny, William, 31  
 Duckett, Cora, 41  
 Durha, Julis, 42  
 Earer Harts, Earer, 42  
 Edd Richmond, Edd, 42  
 Evans, Alma Roseboro, 41  
 Featherston, John Jr., 35  
 Featherston, John Sr., 35  
 Featherston, Lucey, 35  
 Featherston, Willey Colston, 35  
 Ford, Herbert, 41  
 Ford, Young, 41  
 Garland, Audrey A., 36  
 Gillia, Matti, 41  
 Gladden, Emma Qualls, 38  
 Gladden, Robert, 38  
 Godbee, Henry, 33  
 Green, Hattie, 37  
 Grier, Elliot, 39  
 Groce, John (Joseph), 30  
 Harden, William Morrison, 30  
 Hardy, Isabel, 35  
 Roseboro, Hatti, 41  
 Hesler, Julia Palmer, 30, 34  
 Hill, Elizabeth, 31  
 Hill, Elliott, 41  
 Hill, Ruby May, 41  
 Homes, Carrie, 44  
 Hooper, Alex, 32  
 Hooper, Alice Pratt, 32  
 Hooper, Allen, 32  
 Hopkins, Caroline, 43  
 Hudson, Vernon, 39  
 Ida, Thomas, 41  
 Isham, Henry, 31  
 Isreal, Jefferson, 42  
 John Roseborough, 43  
 Johnson, Joanne - 42  
 Johnson, Leon, 42  
 Jones, Rosa Able, 39  
 Josborough, Janie, 41  
 Kelly, Ada Able, 39  
 Kennedy, Izetta Roseborough, 42  
 Killian, Eddie, 33  
 Kinsler, Brenda, 33  
 Lamar, Joseph, 37  
 Lamar, Maggie Hunter, 37  
 Lamar, Mary Qualles, 37  
 Lamar, Tom, 37  
 Lane, Ellen Roseborough, 42  
 Lawhorn, Daisy Roseboro Walter, 42  
 Luke Sawyer, Luke, 44  
 Lyles, Daisy, 40  
 Lyles, Martha, 31  
 Lyles, Sara, 45  
 Lyles, Thomas Minter, 37  
 Macon, Charlotte Woodward, 34  
 Macon, Hamble, 34  
 Macon, Hatwell, 34  
 Macon, John, 34  
 Macon, Thomas Woodward, 34  
 Maey Espeen, Maey, 44  
 Martin, James, 37  
 Martin, John, 37  
 Martin, John, 38  
 Marvin, Lamar James, 37  
 Matthews, Mary Clair Ivey, 36  
 Matthews, Thomas Patrick, 36  
 McCamac, Sam, 40  
 McCamic, Seam, 40  
 McCary, Philas, 44  
 McCormick, Virginia, 42  
 McGraw, Mary Andrews, 30  
 McGraw, Owen, 30  
 McGrif, Carrie, 41  
 McGrif, Peter - 41  
 McMulan, Eliza, 40  
 McNeil, Rev. Anthony, 39  
 Mendenhall, Rosetta, 41  
 Miller, Brenda Cromer, 30  
 Miller, Cora Walker, 39  
 Mitchell, Nimrod, 30  
 Morgan, Mary, 35  
 Morgan, Mary, 36  
 Murphy, Bernice Able, 39  
 Nelson, Amos, 40  
 Nelson, Catherine, 31  
 Nelson, Daniel, 31  
 Nelson, Daniel, 31  
 Nelson, Harriett, 31  
 Nelson, James, 31  
 Nelson, Jesse, 31  
 Nelson, John, 31  
 Nelson, Samuel, 31  
 Nelson, Sudkie, 40  
 Norman, Mary, 40  
 Norman, Sarah, 40  
 Outen, Dicie, 37  
 Parrot, Janie, 42  
 Parrot, Janie Parrot, 41  
 Patrick, Amelia, 36  
 Patrick, David M., 36  
 Patrick, Eliza Jane, 36  
 Patrick, Hannahan Wylie, 36  
 Patrick, Harmon, 36  
 Patrick, John Blair, 36  
 Patrick, John Robert, 36,  
 Patrick, Johnny, 36  
 Patrick, Johnson T., 36  
 Patrick, Michael T., 36  
 Patrick, R.A. II, 36  
 Patrick, R.A., 36  
 Patrick, Robert Alexander, 36  
 Patrick, Robert E. Jr., 36  
 Patrick, Robert Erskine, 36  
 Patrick, Samuel Ross, 36  
 Patrick, Sarah Sally, 36  
 Patrick, T.G., 36

- Patrick, Thomas C., 36  
 Patrick, Thomas Gilfilling, 36  
 Patrick, William Banks, 36  
 Patrick, William Minter, 36  
 Patrick, William Wylie, 36  
 Peay, Austin Ford, 37  
 Peay, Austin, 37  
 Peay, Eliza, 37  
 Peay, Elizabeth, Cumingham, 37  
 Peay, Jennie May Brawley, 37  
 Peay, Ken, 37  
 Peay, William Cunningham, 37  
 Perry, Jacob, 42  
 Perry, Lila, 42  
 Perry, Lilia B., 42  
 Phillips, H.G. Jr., 36  
 Phillips, Hannah Matthews, 36  
 Plantation – Flint Hill, 37  
 Plantation – Malvern Hall, 37  
 Plantation – Melrose, 37  
 Plantation, Wiley Davis - 45  
 Powell, John, 33  
 Powell, Mina Royal, 33  
 Prophet, Valeria, 37  
 Quails, Charles, 37  
 Quails, Elizabeth, 37  
 Quales, Mary G., 37  
 Quales, Robert, 37,45  
 Qualis, Eliza, 45  
 Qualls, Alonzo, 37  
 Qualls, Chester E., 37  
 Qualls, Dank, 37  
 Qualls, David, 38  
 Qualls, Eddie Sr., 38  
 Qualls, Emma Brunson, 38  
 Qualls, Eric M., 38  
 Qualls, Etta Donzala, 38  
 Qualls, Frank, 38  
 Qualls, Henrietta J., 38  
 Qualls, Ida Robertson, 38  
 Qualls, James L., 38  
 Qualls, Jane, 37  
 Qualls, John Jr., 38  
 Qualls, John Sr., 38  
 Qualls, Kevin B., 38  
 Qualls, Mim, 38  
 Qualls, Robert, 38  
 Qualls, Sarah I., 38  
 Qualls, Westley, 38  
 Qualls, Wilbur, 38  
 Qualls, Wylie J., 38  
 Qualls, Johnson, 38  
 Quarles, A. S., 38  
 Quarles, Adlee, 38  
 Quarles, Baley, 38  
 Quarles, Bob, 38  
 Quarles, Ellen Chatmare, 38  
 Quarles, Ernest, 38  
 Quarles, Fletcher Dawson, 38  
 Quarles, George, 37  
 Quarles, Harris Woodward, 38  
 Quarles, Jane Jones, 38  
 Quarles, Jeff, 37  
 Quarles, John E. Sr., 38  
 Quarles, Johnson Lena, 37  
 Quarles, K., 37  
 Quarles, Margaret Melton, 38  
 Quarles, Mary J., 37  
 Quarles, Mary, 38  
 Quarles, Rev. John, 37, 38  
 Quarles, Rev. John, 38  
 Quarles, Robert, 37  
 Quarles, W.S., 38  
 Quarles, William S., 38  
 Quarles, William, 38  
 Quettie, Joseph Roseboro James, 41  
 Richmond, Ed, 42  
 Richmond, Ruth, 42  
 Richmond, George, 41  
 Ridgers Charley, 39  
 Ridgers, Charley, 45  
 Ridgers, Hattie Rodgers, 39  
 Roach, Corena, 40  
 Roach, Mattie, 40  
 Roach, Will, 40  
 Robinson, Lucille Hill, 39  
 Robinson, Tom, 39  
 Rodgers Aaron, 39  
 Rodgers Charlie, 39  
 Rodgers Ed, 39  
 Rodgers Edna, 39  
 Rodgers Emanuel, 39  
 Rodgers Fannie B., 39  
 Rodgers Harriet, 39  
 Rodgers Henry, 39  
 Rodgers Johnny, 39  
 Rodgers Louise, 39  
 Rodgers Margaret B., 39  
 Rodgers Mary A., 39  
 Rodgers Ozeal W., 39  
 Rodgers Rosa B., 39  
 Rodgers Sallie B., 39  
 Rodgers, Emma, 37  
 Rodgers, Hattie - 45  
 Rodgers, Jannie (Sam), 39  
 Rodgers, Ned - 45  
 Rodgers, Ned, 39  
 Rodgers, Sallie, 39  
 Rodgers, Sara Lyles, 39  
 Rosboro, Al, 40  
 Rosboro, C. W., 40  
 Rosboro, Carrie McGriff, 40  
 Rosboro, Charles, 40  
 Rosboro, Clara Rosboro, 40  
 Rosboro, Eugenia, 41  
 Rosboro, Infant, 40  
 Rosboro, Jacoby Roseboro, 41  
 Rosboro, Mattie, 40  
 Rosboro, Minne Rosboro, 40  
 Rosboro, Rosa Ellen, 40  
 Rosborough – Eddie, 40  
 Rosborough, Sadie - 40  
 Rosborough, Abram, 40  
 Rosborough, Ben, 40  
 Rosborough, Beulah, 40  
 Rosborough, Ed, 40  
 Rosborough, Infant, 40  
 Rosborough, Jim, 40  
 Rosborough, John, 40  
 Rosborough, Lottie, 40  
 Rosborough, Makaly, 41  
 Rosborough, Matilda, 40  
 Rosborough, Rolam, 41  
 Rosborough, Sarah, 41  
 Rosborough, Silvia, 41  
 Rosborough, Will, 40  
 Rosborough, William - 40  
 Roseboro Leroy, Sr., 41  
 Roseboro, Alice G., 41  
 Roseboro, Andrew, 42  
 Roseboro, Andrew, Jr., 41  
 Roseboro, Andrew, Sr., - 41  
 Roseboro, Calvin, 42  
 Roseboro, Carrie, 41  
 Roseboro, Davetta, 41  
 Roseboro, Ella Davis, 41  
 Roseboro, Frank, 41  
 Roseboro, Helen, 41  
 Roseboro, Joan Craig, 41  
 Roseboro, John, 41  
 Roseboro, Joseph T., Sr., 41  
 Roseboro, Junior, 41  
 Roseboro, Lucile, 41  
 Roseboro, Maggie, 42  
 Roseboro, Mary Ann, 41  
 Roseboro, Mary Eliza (Jordan), 42  
 Roseboro, Mary Janie, 42  
 Roseboro, Mary Jordan, 42  
 Roseboro, Mattie, 42  
 Roseboro, Phylis, 42  
 Roseboro, Rosetta, 42  
 Roseboro, Sam, 42  
 Roseboro, Sarah, 42  
 Roseboro, T, 41  
 Roseboro, Tom, 42  
 Roseboro, Walter, 42  
 Roseboro, Wardel, 42  
 Roseboro, Willie, 42  
 Roseboro, Willie Edward, 42  
 Roseboro, Willie Nelson, 42  
 Roseboro, Wm., 41  
 Roseboro, Wm. Roseboro, 41  
 Roseboro, Wyatt, 42  
 Roseborough, Arthur, 43

Roseborough, Belle, 43  
 Roseborough, Beulah, 43  
 Roseborough, Carrie H., 43  
 Roseborough, Charity, 43  
 Roseborough, Charlie, 43  
 Roseborough, Dinah, 43  
 Roseborough, Frank, 43  
 Roseborough, Obe, 43  
 Roseborough Preston, 43  
 Roseborough, Sylvia, 45  
 Roseborough William, 44  
 Roseborough Willie, 44  
 Roseborough Willie, Sr., 44  
 Roseborough, Amy, 42  
 Roseborough, Anna, 43  
 Roseborough, Abraham, 43  
 Roseborough, Abram, 43  
 Roseborough, Alex, 42  
 Roseborough, Alice, 44  
 Roseborough, Amy, 42  
 Roseborough, Andrew, 43  
 Roseborough, Charity, 44  
 Roseborough, Charity J., 42  
 Roseborough, Dina, 42  
 Roseborough, Eddie, 43  
 Roseborough, Elizabeth , 43  
 Roseborough, Emma, 37, 40, 43  
 Roseborough, Florence, 44  
 Roseborough, Floride, 44  
 Roseborough, Gussie, 44  
 Roseborough, Harold A., 43  
 Roseborough, Hattie, 43  
 Roseborough, Hester B. , 43  
 Roseborough, Infant Son , 43  
 Roseborough, Isabell, 43  
 Roseborough, Jake, 43  
 Roseborough, Jim, 43  
 Roseborough, John E., Jr., 43  
 Roseborough, Josephine, 43  
 Roseborough, Laura, 43  
 Roseborough, Lula J. , 43  
 Roseborough, Maggie R., 43  
 Roseborough, Major, 42

Roseborough, Malord, 43  
 Roseborough, Mary, 42  
 Roseborough, Nahalie, 44  
 Roseborough, Ruth, 42  
 Roseborough, Thomas C., 43  
 Roseborough, Walter, 44  
 Roseborough, William, 44  
 Roseborough, Willie, 44  
 Roseborough, Willis, 44  
 Roseborough, Eddie Lee, 42  
 Roseborough, Phillis, 44  
 Roseborough, Lundine, 42  
 Roseborough, Mare Jane, 44  
 Rosebough Andy, 44  
 Rosebough, Arther, 44  
 Rosebough, Clarence, 44  
 Rosebrough, Caesar, 43  
 Rosebury, Emma, 37  
 Royal, Augustus Ann, 33  
 Royal, Charles, 33  
 Royal, Eliza Broxton, 33  
 Royal, Esther Williams, 33  
 Royal, Moses, 33  
 Royal, Samuel Jr., 33  
 Royal, Samuel Sr., 33  
 Royal, Sarah Powell, 33  
 Royal, Thomas, 33  
 Royal, Isabel Hardy, 33  
 Royal, Verlinda Godbee, 33  
 Sanders, Ezekiel, 34  
 Sawyer, Mose, 44  
 Shedd, William, 31  
 Smith, Andrenna Armstrong Cleveland, 39  
 Smith, Leitha, 43  
 Squirewell Infant Daughter  
 Squirewell, Abbot R., 44  
 Squirewell, Bishop Eddie, 39  
 Stamper, Henrietta, 42  
 Starks, Phil , 44  
 Stephenson, Ivor Matthews, 36  
 Stephenson, James W., 36  
 Stevenson, Julia - 40  
 Stevenson, Sallie – 41

Stewart, Elick, 42  
 Stokes, Elizabeth, 31  
 Store – J. H. Kennedy, 33  
 Taylor, Diane, 33  
 Taylor, Don, 45  
 Taylor, Guerry, 45  
 Thomas, Willie, 41  
 Turner, Margaret Daniel, 31, 34  
 Turner, William, 34  
 Ulmer, Marsha, 36  
 Valereia Prophet, 40  
 Vaughan, Phyllis, 30  
 Walker, Ernest, 39  
 Walker, James, 39  
 Walker, Rosetta Qualls, 39  
 Walker, Vernita Able, 39  
 Ward, Capt. Benjamin, 31  
 Ward, Lucy, 31  
 Washington, Beulah, 40  
 Watkins, Allan, 33  
 Watkins, Andrew, 44  
 Watkins, Chester Arthur, 41  
 Watkins, Sara, 41  
 Watkins, Steven, 41  
 Watkinsk Steve, 44  
 White, Darell, 32  
 Williams Infant Daughter, 41  
 Williams, Arthur, 38  
 Williams, Mary Gladden, 38  
 Williams, Ruth, 43  
 Willis Roseborough, 44  
 Woodard, Kadena, 39  
 Woodward, Malenda, 42  
 Woodward, Margaret, 31  
 Woodward, Sylvan, 43  
 Woodward, Thomas, 31  
 Woodward, William, 34  
 Wopthia, Mary, 44  
 Young, George, 41  
 Young, Martha, 44  
 Young, Simpson, 41



**Genealogy Everyone Matters!**

**INDEX**

- Anderson, Webster (Sgt.), 17  
 Baldwin, Ken, 3  
 Barnwell, Jarvis, 23  
 Baur, Bill, 23  
 Beatty, J.M., 18  
 Beckham, R.B. (Deputy Sheriff), 16  
 Blizzard, Arthur, 23  
 Blizzard, Elizabeth, 23  
 Blizzard, John, 23  
 Blizzard, Voluntine, 23  
 Bolick, Sara, 26  
 Boulware, Rawley, 16  
 Brown, Geo., 23  
 Buchanan, Judge Thomas, 12  
 Carolina Furniture Company, 18  
 Cathcart, Charles, 20  
 Cathcart, John, 12  
 Cemetery - Barber, 23  
 Cemetery - Kiernahan, 23  
 Cemetery - Blizzard, 23  
 Cemetery - First United Methodist Church, 21  
 Cemetery - James Ashford, 22  
 Cemetery - Jesse Havis, 22  
 Cemetery - Oaklawn, 24  
 Cemetery - Bethel ARP, 21  
 Clark, E.S., 16  
 Coleman, Frank R., 29  
 Dewing, Capt. W.F., 11  
 Dewing, Captain W.T., 12  
 Estes, M.D., Dr. Amos C., 14  
 Fridy, E.G., 16  
 G.L. Kennedy & Co., 18  
 Gaston, Jean (John), 5  
 Gates, Ed, 18  
 Gibson, J.H. (Coroner), 13  
 Gladden, Bertha Boulware, 25  
 Gladden, Mary Jane, 23  
 Gladden, Nicklos, 23  
 Graveyard - Alston and McKinstry, 23  
 Green, III, James Walker, 3, 27  
 Harden, J.M., 18  
 Harman, L.A., 16  
 Harrison, Reuben, 19  
 Hart, Kathleen, 3  
 Havis, Jesse, 21  
 Hill, Robert, 3  
 Hill, Sr., Robert, 3  
 Hood, Adam D. (Sheriff), 16  
 Hornsby, Ben, 17  
 Hoy, Nancy, 27  
 Eisenhower, Clyde, 16  
 Jennings, Robt., 12  
 Johnson, Representative, 12  
 Jones, J.M., 16  
 Kelly, R.L. (Deputy Sheriff), 16  
 Kennedy Mercantile and Banking Company, 18  
 Kennedy, George L., 18  
 Killian, "Pop" Claude Tresvan, 25  
 Killian, Eddie, 25  
 Kinsler, Brenda, 16  
 Kinsler, John Herman, 16  
 Knox, III, James Gill, 28  
 Kreutzer, Jr., Fritz Max, 13  
 Kreutzer, Maggie Smith, 13  
 Kreutzer, Sgt. Fritz Max, 13  
 Kruetzer, Vivian LaBorde Smith, 16  
 LaFreniere, Jacqueline Broom, 3  
 Leitner, Fred, 13  
 Leitner, Walker, 13  
 Mann, T.W., 16  
 Marshall, Robert George, 17  
 Mason, Washington, 12  
 McCarthy, Jeremiah, 12  
 McCreight, James, 30  
 McCreight, Mrs. D.B., 30  
 McGraw, John Bunyan, 11  
 McGraw, Rev. Marshall, 11  
 McMeekin, Hayne, 11  
 M'Creight, D.B., 19  
 Means, Robert H., 24  
 Mitchell, Captain James (tombstone), 24  
 Morrison, Rev., 16  
 Mt. Zion Institute, 30  
 Pinner, Dr. Carroll A., 30  
 Porter, Jimmy, 29  
 Prophet, Valeria, 25  
 Pulliam, Col. A.J., 12  
 Reid, Don, 29  
 Robert C. Hill, Sr. Collection, 3  
 Safford, Merle Woodard, 2  
 Sara Bolick Scrapbook Collection, 3  
 Shelton, Ken, 3, 26  
 Shelton's Shiver Springs, 18  
 Shivar Springs Company, 18  
 Shivar, Nathaniel Frank, 18  
 Smith, Charles W., 13  
 Smith, Charlie, 23  
 Smith, D.F., 16  
 Smith, Jules, 16  
 Steele, Marcus, 29  
 Stevenson, Earl (Deputy Sheriff), 16  
 Stevenson, Isabel Ernestine, 17  
 Taylor, Charlie E., 25  
 Taylor, Gen Edward, 25  
 Thomas, Issac C., 18  
 Thompson, Betty Carol, 3  
 Vann, E.H., 16  
 Woods, Janie Price, 25  
 Woodward, Major W.T., 12  
 Wylie, Jno., 19