



Fairfield County Genealogy Society

3rd Quarter NEWSLETTER

TABLE OF CONTENTS

TABLE OF CONTENTS.....1

MESSAGE FROM THE PRESIDENT.....2

BRYMER ASSOCIATES, LLC THANK YOU.....2

MISSION STATEMENT.....3

VOLUNTEERS ALWAYS NEEDED3

CONTACT INFORMATION.....3

HISTORY OF BROWN-HAWTHORNE HOUSE & ITS FURMAN INSTITUTE STRUCTURAL COMPONENTS.....4

INFORMATION ABOUT HINCHIA MABRY SUBMITTED BY ROXANA WILLIAMS.....7

INFORMATION ABOUT CHARLIE ROBINSON SUBMITTED BY BRYAN GREER.....8

CEMETERY COMMITTEE REPORT SUBMITTED BY JON DAVIS.....13

MEMBERSHIP QUERY/ANSWER ANY HELP FOR THESE MEMBERS FROM THE NEWLETTER READERS?...15

YEARBOOKS OF FAIRFIELD COUNTY, SC SUBMITTED BY LARRY ULMER.....25

CONFERENCES, WORKSHOPS, SEMINARS, INFORMATIONAL WEBSITE LINKS.....27

MEMBERS AND THEIR SURNAMES.....32

REGISTERED IN BOOKCAT NEW ACQUISITIONS/DELETIONS TO/FROM LIBRARY COLLECTION.....43

MEMBERSHIP RENEWAL.....34

MEMBERSHIP APPLICATION.....35

INDEX.....36

Disclaimer: All newsletters that are being made available for your viewing and use are not copyrighted. However, the information is intended for your personal use and not to be copied or reprinted for monetary purposes. Our use of any original work submittals contained within these newsletters such as articles, compiling, photographs or graphics, are given by permission, have become the property of the (FCGS) Fairfield County Genealogy Society to be disseminated freely to the public and conform to Fair Use Doctrine & Copyright guidelines.

Message From The President



Robert "Eddie" Edward Killian, Jr.

Hello everyone,

Sorry it has taken so long to get the 3rd Quarter Newsletter out to you. I know if some of you lived much closer, you would be glad to assist in putting the newsletter together. Thanks for your patience and support as you know we are still in search of a newsletter editor.

It has been a long summer, I hope everyone has fared well. The last few months, the reunion and festival season kicked in and it has not lightened the load any. However, we all appreciate your support and encouragement to keep pressing on! Just like the thank you letter we received recently. This is all a good thing, but we have been running about twice the walk-in researchers and twice the research requests the last several months.

I am going to keep this message short and get back to the grind stone, so to speak. Please take care of yourselves and contribute to your newsletter. Please stay safe and I hope y'all have a great Thanksgiving Holiday!

Eddie Killian

Brymer
ASSOCIATES
LLC
Image Branding for Success
1223 Morning Shore Drive
Suite 200
Lexington, SC 29072-7401
(803) 360-9314
gbrymer@windstream.net

Wednesday, 05 September, 2018

Ms. Pelham Lyles, Director
Fairfield County Museum
Post Office Box 6
Winnsboro, SC 29180

Just want to thank you, Ms. Lyles...

for your generous hospitality recently when Rosalind, Marie, Charlie and I visited with you, Eddie, John and Betty. All of you were extremely helpful and we are grateful for your help in finding information on the John Cork families. True southern hospitality.

We did attempt to locate the Cork cabin but were unsuccessful. Rosalind and I will probably return to make another attempt soon. We followed your instructions but could not find the cabin just as the pavement ended. I know you explained that it was through the woods, but we ran out of time as we had an appointment with our grandson who was returning to USC that day.

Just want you to know that we have sent membership applications to Eddie at the Fairfield Count Genealogy Society and to Ed Gates at Fairfield County Historical Society.

We wish for all of you a pleasant Fall and look forward to seeing you again before too long.

Respectfully,

N. Eugene Brymer

MISSION STATEMENT

The mission of the Fairfield County Genealogy Society is to:

- Promote genealogy through education of its members and the general public;
- Improve access to genealogical information in Fairfield County by maintaining an educational research center;
- Foster collaboration among members;
- Assist those researching their Fairfield County ancestors;
- Conduct periodic educational programs and conferences to explore cultural, genealogical, and historical topics;
- Disseminate cultural, genealogical, historical and biographical information to members and to the general public.

Volunteers always needed

All volunteers are trained and spend on-the-job time with a trained volunteer. The research rooms are small, comfortable and easily accessible. If you can give even three hours a month, please let us know!

Opportunities still open

Newsletter Editors needed to assist with quarterly newsletters

Family Research & Resource Library Needs:

- greeters for researchers;
- get Family Files, Wills, Books out for them to start their research;
- research emails or mailed in research request;
- help clean up and maintain a professional appearance for the library;
- re-shelf or re-file Family Files, Family Wills, Family Books, or other materials back into their proper place;
- examine Book shelves and make sure books are in the proper place;
- examine Books on shelves and remove duplicate books;
- ensure all Books on shelves are in BookCat;
- ensure all Books on shelves have Catalog Label;
- give us your ideas.....

CONTACT INFORMATION

Mail: Fairfield County Genealogy Society
P. O. Box 93
Winnsboro, SC 29180

Location: Fairfield County Museum (2nd Floor)
231 S. Congress St.
Winnsboro, SC 29180

Email: fairfieldgenealogy@truvista.net

Website: www.fairfieldgenealogysociety.org

Phone: (803) 635-9811

Fax: (803) 815-9811

FACEBOOK: [Fairfield County Genealogy Society](https://www.facebook.com/FairfieldCountyGenealogySociety)

Library Hours: Monday thru Friday: 10:00 AM – 5:00 PM Closed Lunch (usually Noon – 1:00 PM)
Saturday's 10:00 AM – 2:00 PM or by Appointment Only, Closed Sunday
Volunteer staffed, please call ahead, and verify assistance available

History of the Brown-Hawthorne House and its Furman Institute Structural Components

The facts about Furman Institute's 14 year operation in Fairfield County (February, 1837 to February 1851) are taken here from a document that was copied from the Furman University Library in Greenville and given to me for our document files here in the Fairfield County Museum. Unfortunately, the volunteer failed to copy the title page containing the author and date of publication. The typewritten paper is called "Furman's Fairfield Days." The bibliography for the paper lists these sources: Records in the Fairfield County Courthouse; Minutes of the Furman Board of Trustees, 1825-1851; Minutes of the Executive Committee, Furman Board of Trustees during the Fairfield period (incomplete); Minutes of the Furman Faculty Meetings during the Fairfield period (incomplete); The Baptist Encyclopedia, William Cathcart, Everts, 1883; Baptist Beginnings in Education, W. J. McGlothlin, Sunday School Board, 1926; The Life Work of James Clement Furman, H. T. Cook, Alester G. Furman, 1926; Lest We Forget, J. S. Dill, Broadman Press, 1938; Centennial issue, The Baptist Courier, December 8, 1921; History of Fairfield County, Fitz Hugh McMaster, State Pub., 1947; Two Centuries of the First Baptist Church of South Carolina, H. A. Tupper, Woodward and Co., 1889; and "interviews."

The background for development of the Baptist congregations in early Fairfield County history began as early as the 1760s when Philip Mulkey established a nearby church called Congaree, the first Baptist church in the up-country of SC. It was Mulkey's follower Joseph Reese who baptized Richard Furman for whom Furman Institute, later University, was named. In 1833 Furman's son James Clement Furman married Harriet Davis, the daughter of Rev. Jonathan Davis, whose Fairfield County plantation establishment was located in Monticello. In 1820 Rev. Davis had organized Fairfield Church near the spot where Furman Institute would be located in 1831.

In 1825, The State Convention of the Baptist Denomination in SC incorporated the establishment of an academic and theological seminary which opened first in the village of Edgefield. After it failed to thrive, Furman Institute was moved to High Hills of the Santee (present day Stateburg). After five years, the school had failed again, and by 1835, under the influence of Nicholas Hodges, it was decided to move the school to Fairfield. Rev. Jonathan Davis was elected president of Furman's Board of Trustees and obtained 557 acres near Fairfield Baptist Church for the campus. Fairfield County Deed Book MM, p. 502 shows a plat for the deed (signed March 8, 1836). Fairfield Church is shown in the north central area of the plat just east of the old road from Monticello to Winnsboro. The road and its straightened-out modern representative SC State Highway #213 divides the Furman campus about in half. It shows the easternmost placement of the Faculty Residence, a brick two-story building which still stands and is occupied presently by Herman Mattox. Across the road on the west is located the school structure on a high hill. The first Institute building was a frame structure 120 feet long by 30 to 40 feet wide, and it housed the students, class-rooms, and library. At its opening in February of 1837, there were 50 boarders and 13 local students. Each student was required to work 2½ hours per day in the fields under the direction of a farmer and the teachers were expected to go with them to the field.

The principal of the English and Classical School was Professor W. E. Bailey. Leader of the Manual Labor feature was William Davis, assisted by N. W. Hodges. The theological division was started the following year.

Tragically, on May 1, 1837, a fire destroyed the building along with its entire contents, taking the life of a student. Undaunted by this, plans were made to rebuild. By January of 1838 a dozen small one and two-room cabins were erected on the hill in a semi-circle to house the students. They were paid for by individuals and erected around the burned site. A new three storied brick classroom building, assumed to be fire proof, was constructed on the site of the previous building. A quarter of a mile east of this arrangement the brick "teacherage" was built, and it was in this home that the first Mrs. James C. Furman died in 1849. In January of 1838, the theological department was opened with Dr. Hooper in charge and Rev. J. S. McGinnis split his teaching duties between the Classical and Theological departments.

The author of this paper has inserted a crude drawing of a single dormitory cabin, "reconstructed from the description in minutes of the Board of Trustees and that of local citizens who remember seeing them." This single cabin was described as being 18 feet long, 16 feet wide with 9 ft. ceilings. The structures sat one foot above ground (on stone piers), had one door, two windows, and one chimney. The author's drawing suggests that clapboard siding covered the frame buildings.

Following the story, it appears that problems had begun to affect the school already. The manual labor department was plagued with rebellious students who shirked their work. The school operated at a loss, and in 1839 the trustees authorized the sale of all property such as horses, stock, provisions, and all movables except two mules and an ox cart and oxen. This marked the beginning of the abandonment of the classical school and the manual labor feature. Local liquor shops were contributing to the demoralization of older students and there were complaints about the boarding prices charged for students. In 1844 several neighbors petitioned for fences to be repaired and insinuated that the school steward had killed some of their cattle. There was a rapid turn-over of faculty members and administrators, and James Furman was offered \$400 a year to divide his teaching time with preaching at nearby Fairfield Baptist Church. Another nineteenth century writer claimed that there was general complaint among the teachers that the boys of Fairfield were only interested in running barefoot and tending to farm animals, and that they were generally "unteachable." By 1841 there was discussion about moving the school to another place in a more "salubrious climate where there was a larger proportion of white people, cheaper living conditions, and a denser Baptist population." The failure of the Columbia to Charlotte railroad to locate a segment or spur closer to Furman and a strained relationship with Mt. Zion Institute in Winnsboro are also given as possible reasons for the decision to close the Institute in Fairfield. By 1850, plans were being made to move to Greenville. Preparations were made for the immediate removal of the school as the expense of moving was only a "little more than \$500 since there was not much to move---the library, the furniture, the household goods of the professors, and little besides." By January of 1852, the move was complete.

In 1851 the State Convention of the Baptist Denomination sold to John R. Shurley of Fairfield District 317 acres of land on which the school building and cabins were located. Shurley had been operating another boarding school named Shurley Institute in the area and perhaps may have contemplated expanding with the acquisition of the Furman facility. However, more controversy erupted with the Fairfield Baptist congregation around arguments about some of the institute property. Rev. Jonathan Davis died in 1855 and the quarrels increased until his death until someone burned down the church, destroying all the church records. Members organized the First Baptist Church and moved to Winnsboro. Fairfield Church went virtually out of existence. It appears that the neighborhood had "gone to pot", all in the advancing wake of the difficult war years to come.

Brown-Hawthorne House Addition



The author of this paper writes that "people of the community bought up the cabins and some claim today that the sills of their present homes are laid on material taken from the cabins." Sometime after Furman Institute's departure in January, 1852, it is said that a descendant of Adam or James Hawthorne dismantled one or more of these dormitory barracks and attached a longitudinal addition to a log house that still stands less than $\frac{3}{4}$ of a mile west of the Furman campus. The log cabin had been built on a 100-acre tract granted to James H. Adams in 1770 by South Carolina's Royal Governor Greville Montague.

Furman barracks addition to Hawthorne log house (in shade on the right).

The property was sold to James Hawthorne in 1771 and shortly afterwards, according to Hawthorne family tradition, a "bounty log house" was built in the typical frontier cabin configuration of two rooms and an above sleeping loft. The 18-foot by 25-foot building housed Hawthorne descendants until it was sold in 1877 to Robert Brown, the ancestor of

the present owner. Sometime after Furman Institute abandoned the campus in 1852, the Furman barracks addition was attached to the west end of the Hawthorne house.

The above document quotes that the Furman wood frame dormitories or barracks on the campus measured 18 feet long, 16 feet wide with 9 ft. ceilings. The frame barracks addition to the Hawthorne log house measures 18 feet wide and 33 feet long and has two rooms and a sleeping loft or garret under the high pitch of its roof. This second floor room is accessed by a steep staircase and had its own fireplace for heating. The attic lofts of both sections of the house are accessible through a door connecting the two structural components. Each component has its own steep stairwell.



West end on left (Furman barracks). East end below shows clapboarding over log and deteriorated rear shed room and kitchen wall in far right.

Detail of log notching on front of Hawthorne house visible under collapsed front porch



Brick Furman teacher age nearby, now used as a home.

Additional Historical Facts of Importance to our Community and State:

The Hawthorne structure continued to house several generations of family members from the eighteenth through nineteenth centuries. Reverend Eli Alston Wilkes, Jr., a Methodist minister, was raised in this house. The Alston Wilkes Society was founded in 1962 as a non-profit organization dedicated to providing rehabilitative services to adults released from correctional facilities and is the largest statewide agency of its kind providing direct services in the United States. In 1910 Eli Wilkes wrote an autobiography called Echos and Etchings. The first chapter in his book details his boyhood

when General Sherman's Union Army marched through Fairfield County in February of 1865. His mother, Mrs. Elizabeth Hawthorne Wilkes, whose husband had died after Gettysburg in 1863, attempted to take her young son to a safer place with relatives in western Fairfield, but the king pin on the carriage broke when they tried to leave. They tried to hide the horse, but the "bummers" of Sherman's army soldiers confiscated it. Later, a soldier set a fire in the middle of the living room, but Mrs. Wilkes gave the Mason's sign of distress and an officer extinguished the fire.

In 1877, Robert Brown bought the property from the Hawthorne heirs and the present landowner, Bobby Brown is his descendant. He was raised by his widowed mother in the house until she moved out into a newer nearby structure a dozen years ago. The house has been vacant ever since and Mrs. Brown died last year.

Member Newsletter Submission

Information about Hinchia Mabry

Submitted by Roxana Williams

The will of a Hinchia Mabry, Jr., dated 2 Apr 1755, probated 27 May 1755, is recorded in Brunswick Co., Va., Will Book 3, p. 160. His devisees were his sons Evans, Seth, and Hinchia, daughter Hannah, father, Hinchia Mabry, brother, Joel Mabry, and Richard Hill of Surry Co., whom he appointed "to have care of my daughter Hannah."

The children of Hinchia and Celia (Evans) Mabry, except their oldest son Evans, appear to have been minors in 1755 when Hinchia Mabry made his will. His son, Seth, chose the latter's brother, Evans, as guardian, and his son, Hinchia, chose Nathaniel Evans as guardian. (Brunswick Co., Order Book 11, pp. 31-32)

The will of William Evans, probated 1752, in Surry Co., names wife, Priscilla, son, William, and daughter, Celia Mabry. She was probably wife of "Hinchia Mabry Jr." and mother of the Hinchia Mabry who married Dolly Clack.

"Hinchia Mabry, the Elder and Anne, his wife," 1 Jan 1752, for 150 pounds, conveyed to Clack Courtney, 57 acres of land granted the fifth day of July last to "said Anne then by the name of Courtney."

(Brunswick Co., Deed Book 5, p. 143)

This "Hinchia Mabry the Elder" who appears to have married in 1751, the widow, Mrs. Anne Courtney, was probably the father, by a former wife, of "Hinchia Mabry, Jr." and grandfather of the Hinchia Mabry who married Dolly Clack. "Hinchia Mabry the Elder" probably survived his son "Hinchia Mabry Jr." and was probably the "Hinchy Mabry" the inventory of whose estate, dated 27 Apr 1762, is recorded in Will Book 4, p. 287, Brunswick Co.

The will, 1712, of "Francis Maybury" is recorded in Surry Co., also the will, 6 Jun 1713 probated 15 Feb 1715 in Southwark Parish, Surry Co., of his widow, Elizabeth Maybury, whose devisees were her sons, John and Francis West, Francis Maybury, Hinchaw Maybury, George Maybury, Charles Maybury and daughters, Ann Peoples, Mary Fox, Judith Maybury, and Elizabeth Paine, widow, and brothers, John and Hinshaw Guillian. The widow, Elizabeth Maybury, is said to have been daughter of John and Margery Guillian and to have married, first, John West, second, William Bevan, and third, Francis Maybury. (Mrs. Pleasants)

Her son, "Hinchaw Maybury," was probably the "Hinchia Mabry the Elder" of Brunswick Co. who married, lastly, the widow, Anne Courtney. He is said to have married also Frances Parham, daughter of Ephraim and Frances (Green) Parham and granddaughter of Matthew Parham, son of James Parham and of Lewis Green, son of Peter Green, and by her to have had son "Hinchia Mabry, Jr." who married Celia Evans and had son, Hinchia, who married Dolly Clack. (Mrs. Pleasants)

The will of another Francis Maybury was probated 19 Feb 1738 in Surry Co. He was probably the son of Francis and Elizabeth Maybury mentioned in her will.

MT. ZION ALUM CHARLIE ROBINSON BEATS GAMECOCKS IN BACK TO BACK YEAR

Information about Charlie Robinson

Submitted by Bryan Greer, York, South Carolina

I started asking around 11 years ago if anyone knew who these Robinson's are/were. I was curious if any of their descendants remained in Fairfield. This is what I have finally discovered, most all this week after pressing on the issue.

Dr. William Robinson (1796-1965) and Marie Ann Earle (1807-1869) were the parents of John William Robinson. He was born in the Greenville District of South Carolina and the family later moved to Anderson, South Carolina. On 1 June 1858 by Rev W. E. Walters, John William Robinson married Rebecca Elizabeth Watt (born 1833 in Fairfield County, South Carolina). Their children were: Warren K. Robinson (11 Jul 1859–25 Jun 1862, buried at Old Brick Church, Fairfield County, South Carolina); Vinro K. Robinson (1 May 1865–15 Sep 1874, buried at Old Brick Church); Charles Alexander Robinson Sr (next paragraph); Annie L. Robinson (7 Feb 1871-23 Dec 1923, buried at Old Brick Church); Nancy Jane Robinson (17 Aug 1878-31 Dec 1961, buried Carolina.



John William Robinson

Birth: 24 Dec 1828

Death: 13 May 1881 (age 52)

Burial: Old Brick Church Cemetery

Monticello, Fairfield County, South Carolina

Rebecca E. Watt Robinson

Birth: 18 May 1833

Death: 18 Jan 1902 ((age 68)

Burial: Old Brick Church Cemetery

Monticello, Fairfield County, South Carolina

OBITUARY: Mrs. Rebecca E. Robinson died on January 18th. She was the daughter of John and Nancy K. Watt. She married Mr. J. W. Robinson on June 15, 1858. She was buried at the Brick (Ebenezer) Church beside her husband who died 21 years ago. She leaves three children, Mr. C. A. Robinson, Miss Anna Robinson and Mrs. G. A. Robinson. She also leaves two brothers and one sister, Mr. T. C. Watt and Mrs. Mary F. Irby of Fairfield and Mr. A. K. Watt of Benita, La. The News and Herald, February 12, 1902 Issue

Charles Alexander Robinson Sr was born 24 June, 1867 in Fairfield County, South Carolina and died 29 January, 1949 in York County, South Carolina and he was interred at Old Brick Church, Fairfield County, South Carolina. He married Louisa Loughlin "Loulie" Ashford born 12 December, 1869 in South Carolina

and died 20 July, 1958 in Winnsboro, Fairfield County, South Carolina, buried Sion Presbyterian in Winnsboro.

Their children are: Annie Laurie Robinson (28 Mar 1892-27 Jul 1892, buried Old Brick Church); Iva Rebecca Robinson (26 Jul 1893 Winnsboro, Fairfield County, South Carolina-11 Jan 1974 Chatham County, Georgia); William Ashford Robinson (2 Nov 1895 Winnsboro-19 Feb 1984 Winnsboro); Strobie Kincaid Robinson (29 Oct 1900 Winnsboro-21 Apr 1992 Presbyterian Home, Clinton, South Carolina); Charles Alexander Robinson Jr (next paragraph); Loulie Loughlin Robinson (24 May 1905 Winnsboro-8 Oct 1907 Winnsboro, buried Sion Presbyterian); Ruth Matilda Robinson (19 Oct 1909 Winnsboro-26 Dec 2008). There are numerous articles in The News and Herald newspaper referring to him as mayor of Winnsboro. Clerk of Court for Fairfield County, Winnsboro, S. C., November 15th, 1922 AN ORDINANCE Providing that all Property Holders owning property abutting on Congress and Evans Streets, make Water and Sewerage Connections. Whereas the Town of Winnsboro having resolved to pave Congress and Evans Streets of said Town, and whereas, it will be greatly inconvenient and expensive to tear up and remove said pavement for the purpose of making water and sewerage connections: Now, Therefore be it enacted and ordained by the Town Council of the Town of Winnsboro: Section 1. That all property holders owning property abutting on Congress Street and Evans Street of the Town of Winnsboro, (whether the said property be occupied or vacant) are hereby required to make water and sewerage connections with the water and Sewer mains on said Congress and Evans Streets, within the period of thirty days from the publication of this ordinance. Section 2. That after the lapse of thirty days from the passage of this ordinance, no removal of street pavement shall be permitted for the purpose of making water and sewerage connections within the period of ten years; Done in Council this 8th., day of November, A. D. 1922, and with the Corporate seal of the said Town affixed. C. A. Robinson, Mayor H. E. Ketchin, Clerk. The News and Herald, November 30, 1922, Page EIGHT, Image 8. He also had a store on Main Street. The following two advertisements were placed in The News and Herald newspaper for his store. The News and Herald (Winnsboro, S.C.) 1901-1982, September 30, 1921, Image 8 states: I take this means to inform you that I am now carrying the largest assortment of Fancy Groceries that I have ever had in stock. They were bought right and I can save you money. I also wish to thank you for your past patronage and assure you that I will take care of all your future needs if you will trust it to me. Beginning the first of October, I have adopted a few rules that have become necessary in my business and which I hope you will observe so that there will be, no embarrassment to anyone. 1. We will require payment the first of every month. 2. Place your orders early in the morning or afternoon. 3. We cannot send a loaf of bread or a yeast cake alone, unless we are passing that way with the delivery. 4. Don't give hurried orders; remember there are a dozen others who are doing the same thing in a different direction. 5. Anticipate your wants early; by so doing you lessen our work and cost to you as well as to our selves. 6. Remember we guarantee everything we sell. 'If it is not right we make it right', and you can rest assured, that you will always receive that same polite and courteous attention when trading with us that has made our store famous. Come to our store; send the boys, send the girls, send the small children. Let's get better acquainted, let's CO-OPERATE, Yours for honesty and square dealing, C A. ROBINSON. The News and Herald (Winnsboro, S.C.) 1901-1982, October 20, 1922, Image 5 states: Seasonable Groceries WE ARE READY TO SERVE WITH THE FOLLOWING BEST CHEESE AND MACARONI BEST HAMS AND BREAKFAST BACON BEST BUCKWHEAT AND PANCAKE FLOUR BEST CANE AND MAPLE SYRUP BEST BREAD AND CAKES BEST CITRON, ORANGE AND LEMON PEEL BEST FRESH NUTS, RAISINS AND CANDIES BEST FRESH CELERY, LETTUCE, BEANS, CABBAGE AND FRUITS FRESH OYSTERS EVERY WEEK - Quarts, 75c. Pints, 40c. IN FACT, ANYTHING THAT CAN BE FOUND IN A FIRST-CLASS FANCY GROCERY, WE HAVE IT. Our business grows daily, therefore we ask that you give your orders early in the morning and afternoon in, order that they may get to you in time. If you are not a customer try us for honest, courteous service. * OUR MOTTO: "PLEASE OUR PATRONS." C. A. Robinsons. He was also in the

South Carolina House of Representatives District including Fairfield County. The News and Herald (Winnsboro, S.C.) 1901-1982, June 30, 1922, Image 6 states: FOR HOUSE OF REPRESENTATIVES We wish to present to the voters of Fairfield county a candidate for the legislature who is well-known to everyone in the county, a man who is everybody's friend and who possesses unusual qualifications for the office, and one who will exert every effort to further the interests of the county in a progressive way; and sincerely hope he will consent to make the campaign. We present the name of Mr. C. A. Robinson. FRIENDS.



Charles Alexander Robinson, Sr.

Birth 24 Jun 1867

Death 29 Jan 1949 (aged 81)

Burial Old Brick Church Cemetery
Monticello, Fairfield County, South Carolina



Loulie Ashford Robinson

Birth 12 Dec 1869

Death 20 Jul 1958

Burial Sion Presbyterian Church Cemetery
Winnsboro, Fairfield County, South Carolina

Charles A. Robinson Jr. was born 5 JULY 1903 in Winnsboro and died 1 December 1973 in York County, South Carolina, buried at Laurelwood Cemetery, Rock Hill, York County, South Carolina. He was alumnus of Mt. Zion who excelled at Clemson more so in track than football. However, Charlie still managed to produce winning kicks in back to back years (1922-23) for Clemson football against South Carolina despite being an offensive back. Clemson College also had 3 other Mt. Zion alums on their 1922 football team Boyd "Dutch" Tennant, Stewart Harvey, and Andrew "Gilly" Cathcart. Anyone know who they were or know any descendants of these 3?



1922 Clemson Football Team

Charles Robinson, Jr., and Boyd Tennant left last week to enter Clemson College. The News and Herald, September 09, 1921, Image 5. Charles Robinson and Boyd Tennant, who are both members of the Clemson football squad, will return to College on Friday. The News and Herald (Winnsboro, S.C. 1901-1982), September 01, 1922, Image 5 WINNSBORO BOYS TO BE-IN (CLEMSON LINE-UP THURSDAY When Clemson and Carolina line up on the gridiron at the State Fair Thursday, two Winnsboro boys will be in the Clemson line up. Tennant, a former Mount Zion star will be at right guard. He is considered one of the best linemen that Clemson has this year and will be hard to stop from breaking through the line and downing the Carolina backs. Robinson, another old Mt. Zion star, will start the game at left half back. "Hump" is a good man in the back field. He is fast and is a good open field runner. It can be expected of him to give a good account of himself. Harvey, who will play center for the Tigers, is a Fairfield boy. He hails from Woodward. This young fellow played a good game against Center, three weeks ago and everybody is looking for great things from him Thursday. From all indications there will be big crowd on hand at the game from here to see these native sons play. The News and Herald, October 27, 192, Image 5.

November 3rd, 1922 edition of the Winnsboro News & Herald newspaper below.

CHARLIE ROBINSON STARS IN ANNUAL FAIR WEEK GAME

In the annual fair week game of foot-ball, Clemson defeated Carolinas by the score of 3 to 0.

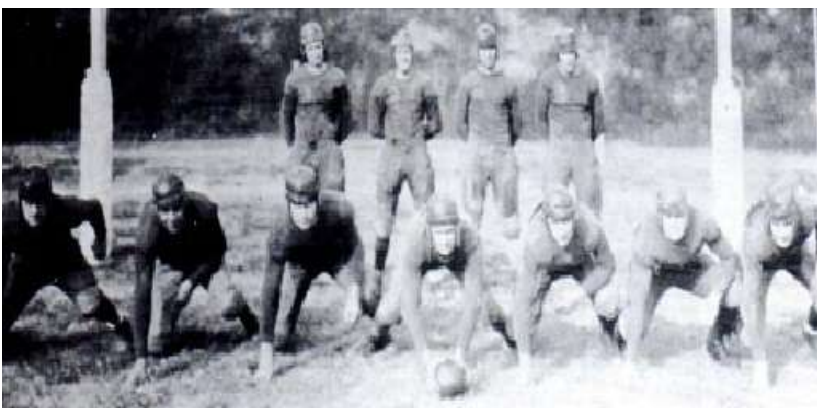
On the Clemson team were three men from Fairfield county, who played the entire game, Charlie Robinson, Dutch Tennant, and Harvey. It can be said of Charlie that he won the game by his drop kick in the last few minutes of the fourth quarter. This former Mount Zion star tried one kick but it was blocked and the ball was recovered by him, and on the next attempt he placed the ball squarely between the bars for the only score of the game. He not only kicked this drop kick, but he punted as well if not better than Snipes, the Carolina punter, during the whole game. He also made several pretty tackles during the game.

Tennant, the husky guard, played an unusually good game. He was right there when it came to breaking up line plunges. He seemed to have put "pep" in the team as he was seen several times to slap the players on the back and also talk to them.

Harvey, the young fellow who hails from Woodward, played a hard and steady game. He is one of the best players on the Tiger team and can stand a lot of punishment, as he showed in this game.

On the sidelines was another old Mount Zion star, who was ready and rearing to get in the game, and that was Andrew Cathcart, better known as "Gilly". From all reports it seems that "Gilly" will be a regular next year.

Winnsboro and Fairfield are proud of these sons and they will be watched with interest in the remaining games of their college career.



1923 Clemson Football Offensive Team

In above picture: Linemen (L-R) C. C. Garrison, Butch Holohan, Stonewall I B. Wertz, Dutch Tennant, Frank Strother, Gary Finklea; Backs (L-R) Charles Robinson, E. G. Dotterer, Bratton Williams, & Pat Harmon



1924 Clemson Tigers

In Charlie's senior year, he was named captain of Clemson's 1924 football team. He was also a track teammate of J. Strom Thurmond at Clemson.

Charlie was married to Sara Jones born in York County, South Carolina about 1905. Their children are: Rev. Charles Alexander Robinson III (next paragraph); John L. Robinson and William A. Robinson living sons living in Rock Hill.



Charles Alexander Robinson, Jr

Birth 5 Jul 1903

Death 1 Dec 1973 (aged 70)

Laurelwood Cemetery

Burial Rock Hill, York County, South Carolina

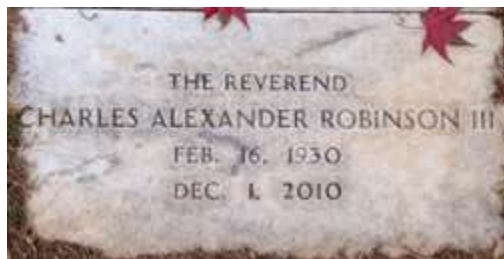


Captain Charlie Robinson whose magic toe beat USC in both 1922 and '23.

Rev. Charles Alexander Robinson III born 16 Feb 1930 and died 1 Dec 2010 (age 80) in Atlanta, buried Unity Cemetery, Ft. Mill, York County, South Carolina. His wife was Elizabeth Grimbball born 24 Sep 1931 and died 9 Mar 2013 (age 81), buried Unity Cemetery.

Obituary

-- ATLANTA - The Rev. Charles Alexander Robinson III, 80, died Wednesday, Dec. 1, 2010, at his home in Atlanta, Ga. Before moving to Atlanta, he was the rector of St. Andrew's Episcopal Church in Fort Valley, Ga., for 27 years. Charles is survived by his wife, Elizabeth Grimbball Robinson; his children, Charles Alexander Robinson IV and wife, Mary Ann, Elizabeth Robinson Ledbetter and husband, Victor, and Sarah Robinson Topfl and husband, Ludek; and five grandchildren. He is also survived by one sister, Laura Robinson Wygant of Silver City, N.M.; and two brothers, William Ashford Robinson and John Lambert Robinson, both of Rock Hill, S.C. He was predeceased by a brother, Edward Jones Robinson. The funeral service will be held at 2 p.m. Friday, Dec. 3, 2010, at the Mikell Chapel at the Cathedral of St. Philip in Atlanta. A graveside service will be 2:30 p.m. Sunday, Dec. 5, 2010, at Unity Cemetery in Fort Mill, S.C. In lieu of flowers, the family requests donations be made to St. Andrew's Episcopal Church, 309 Central Ave., Fort Valley, GA, 31030. Castellaw Funeral Home, Smyrna, Ga., is in charge of arrangements.



Rev Charles Alexander Robinson, III

Birth 16 Feb 1930

Death 1 Dec 2010 (aged 80)
Atlanta, Fulton County, Georgia, USA

Burial Unity Cemetery
Fort Mill, York County, South Carolina



Elizabeth Ardrey "Betty" Grimbball Robinson

Birth 24 Sep 1931

Death 9 Mar 2013 (aged 81)

Burial Unity Cemetery
Fort Mill, York County, South Carolina

Cemetery Committee Report

Sometimes you can find information such as parents, spouses, where they came from, when they immigrated and other interesting facts on a tombstone. Here are some examples.



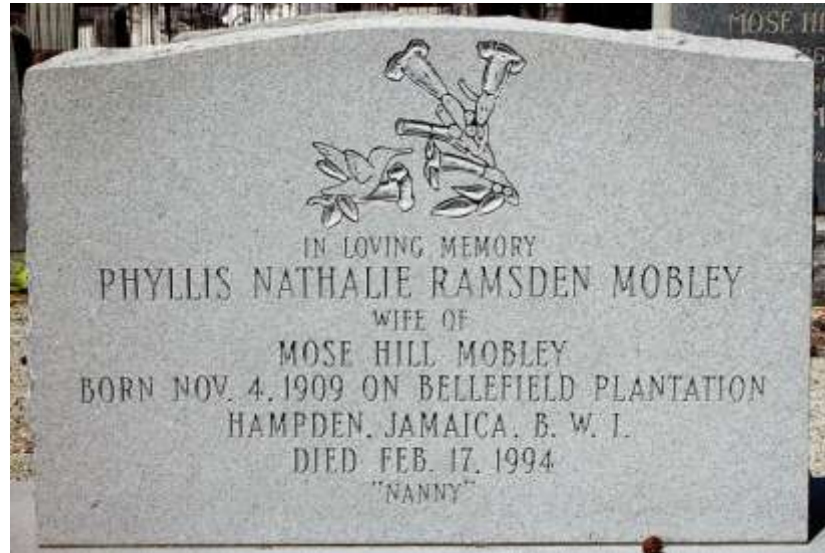
James and his wife, Mary, are buried in the Bethel ARP Church Cemetery in Winnsboro.



John Davis is buried in the Little River Baptist Church.



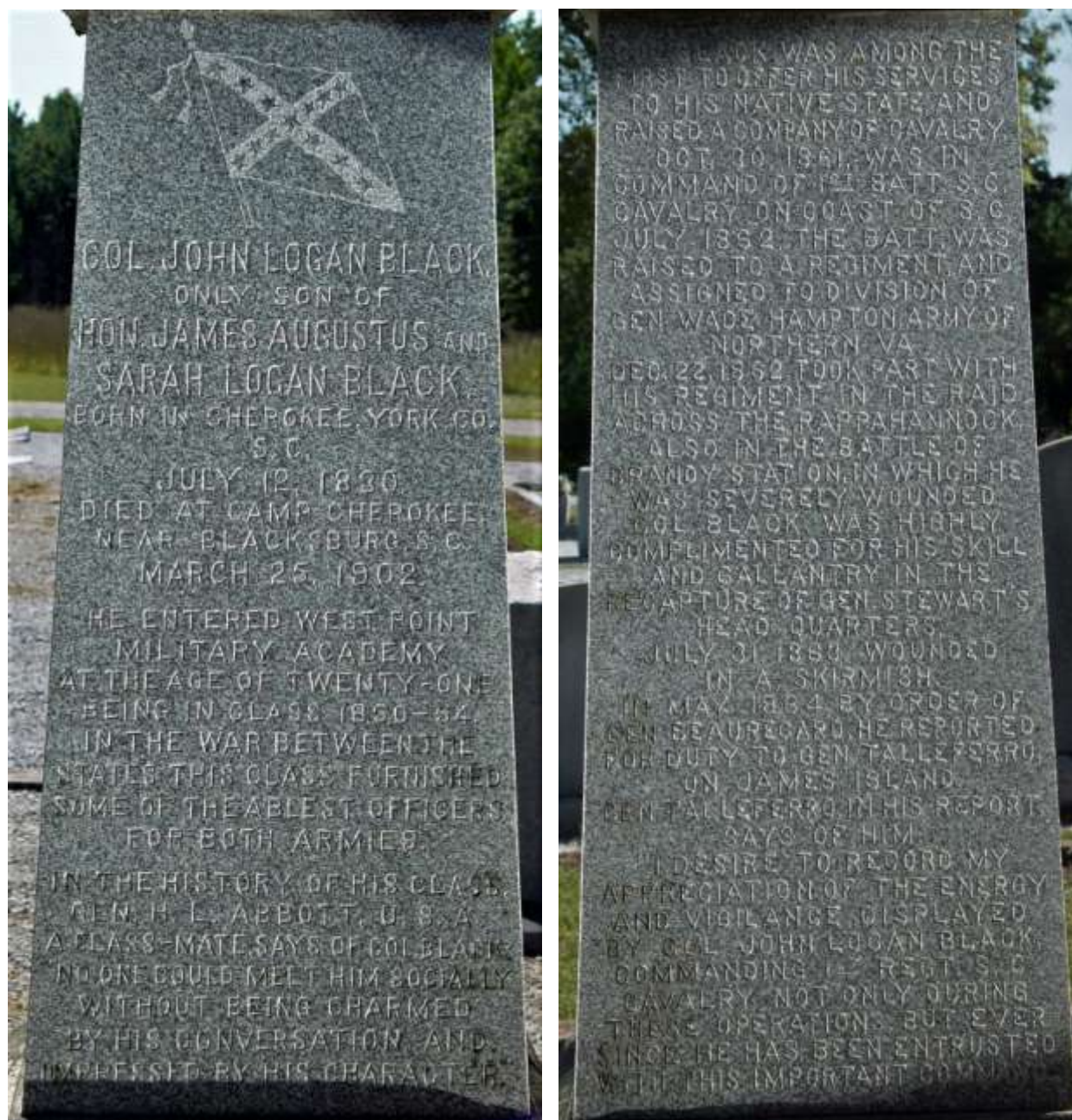
Robert is buried in Zion Presbyterian.



John is buried at Mt. Olivet Presbyterian Church. Phyllis Mobley is buried in Mt. Olivet Cemetery.



Both David Doe and Hugh Milling are buried in the Jackson Creek (Old Lebanon) Presbyterian Cemetery.



John Black is buried in the Aimwell Presbyterian Church Cemetery in Ridgeway.

Membership Query / Answer

Any help for these members from the newsletter readers?

Diahn Taylor Q. I am requesting you to upload the FORD surname information ahead of schedule.

A. I have uploaded the family information and tombstone pictures for the Ford family.

Please, let me know if you find anything wrong with the links; have not completed a thorough QA.

From our website members only pages, choose Families, then Choose Ford or this line will take you straight there: http://fairfieldgenealogysociety.org/Members_Only/Families/Ford/Ford.htm

Leslie Cheu Q. Requested a copy of the WEIR surname information in our collection.

A. I have uploaded the family information and tombstone pictures for the Weir family. Please, let me know if you find anything wrong with the links; have not completed a thorough QA. From our website members only pages, choose Families, then Choose Weir or this line will take you straight there:
http://fairfieldgenealogysociety.org/Members_Only/Families/Weir/Weir.htm

Blaine Walker Q. I am creating source citation for Jonathan Davis and other works but need more information to be accurate. Can you provide what you use for: Death Notices from Winnsboro Newspapers 1866-1916 by Jonathan E. Davis (with index); Marriage Notices from Winnsboro Newspapers 1866-1916 by Jonathan E. Davis (with index); Wedding from Old Newspapers; Obituaries from Old Newspapers 1827 - 1982; ...or publication dates and author/creator for the last two? About Jonathan Davis's works...do you know what year he produced them? You had said that a PDF version was available, I did not find, the typescript, "*North of The Broad River, The Land and the People*", by Buford S. Chappell, M.D.

A. In 2013, Death & Marriage Notices came from the microfilm of Winnsboro newspapers at the Fairfield County Library Palmetto Room. Marriage & Wedding Notices come from Winnsboro newspaper clippings in two scrapbooks by Genealogy Library volunteers located in the Genealogy Library in the Fairfield County Museum. The "*North of The Broad River, The Land and the People*", by Buford S. Chappell, M.D. are behind the members only pages, in books. Here is a direct link for you:
http://fairfieldgenealogysociety.org/Members_Only/Books.htm.

Keith Duncan Q. I am researching my Duncan family history. I have traced back to Perry C. Duncan aka P.C. Duncan. I know his wife was named Advill.

Perry C. or P.C. Duncan

-Born about 1815 in Union County, SC

-One family tree on Ancestry claims married in 1835 but there is no source.

-1840 US Census showed family lived in Union County, SC w/ 1 female under age 30 years old, 1 male under 5 years old and 1 female under 5 years old

-1850 US Census showed family still in Union County, SC w/ wife listed as Adrill age 40, Robert (son) age 12, Mary (daughter) age 10, Joseph (son) age 9 and Rufus (son) age 3.

-1860 US Census showed the family living in Union County, Mississippi. Wife is listed as Advill, Robert, Joseph and Rufus (sons).

-1880 US Census showed the family in Pontotoc, Mississippi. Wife again listed as Advill and grandson Robert F. living with them. He is the son of Robert H. Duncan who died on 4 Dec 1862 in a hospital in Atlanta due to illness while serving in the 41st Regiment of the Mississippi Volunteers.

Adrill Duncan (wife)

-Born about 1810

-One Family tree on Ancestry says her name was Mary F. Advill Hill born in Malboro County, South Carolina about 1810. There is no sourcing on this information.

-Her father according to this family tree is Elisha Hill born in 1780 and died 26 Dec 1856 in Fayette C (no other part of site shown)

I have a question for you since you have much more experience than me at this. Perry C. Duncan's youngest son was Rufus H. Duncan. I was looking at the 1870 Federal Census to source his family members. Listed in his household were his wife and 2 children. In the household listed right above them is a Decater Duncan and his wife Alice. Decater Duncan was listed as 52 years old, so he would have been born about 1918. He is also listed as having been born in South Carolina. Perry C. Duncan was born about 1815. What are the odds that Perry and Decater are brothers?

A. A PDF file with interesting articles in the Greenville, South Carolina early newspapers is attached.

More to come, found some articles in the Southern Christian Advocate newspapers as well. The above attachments contain all of the Duncan information from newspapers. I noticed several of the Duncan's you are looking for in your research. Please let me know if the newspaper articles are enough proof. I have updated our Family Files section of the Members Only web pages to add Duncan information from our collection. The Duncan information is at the following link:

http://fairfieldgenealogysociety.org/Members_Only/Families/Duncan/Duncan.htm.

Please let me know if this information will provide the proof you are looking for; especially the newspaper articles.

Julia P. Hesler Q. In the Robert Hill notes (or a probate record document I found based on his notes) Thomas W. Macon witnessed a signature for a land sale to William Turner in 1823. We only have an approximate date of birth for Thomas, so it occurred to me that for him to witness this deed, he must have reached the age required for that at that time. Do you happen to know, or know where I can find out, what the required age would've been in order to witness a signature during that time period? 16? 18? 21?

A. Times have really changed, but I am pretty certain that you could do this at 16. I will ask around and see if I can find out anything more definitive for you. What we have found so far; is that minors had to be under a guardian until they come of age, 21. Have not found an exact document but it is implied by guardian records that one was not considered an adult until 21. You would have had to be an adult, 21 to own and/or witness business transactions. Still looking..... I concur with Eddie that in all my research into deeds, plats and equity court records, you had to be 21, Jon.

Very interesting! That significantly changes the possibilities for birth year for Thomas W. Macon. (since 1823 - 21 = 1802!) We knew he was born before Charlotte Woodward's children by her subsequent marriage to William Turner, and assumed it was after her marriage to John Macon in 1803. Based on census records, his derived birth year was 1811. If we've been that far off, *no wonder* we haven't been able to find anything on him! Thank you for the letting me know that you support Eddie's answer on that. Update: Apparently one can specify in their will even younger ages, at least in Colonial Virginia. I found a will for Thomas Goodwyn of Southwark Parrish, Surry County, Virginia, of Colonial America: Item. Devises to son William dye before he comes to the age of nineteen years, then my will is that the land and negroes return to my son Francis and his heirs forever, and please God they both should dye before they come to the age of nineteen years, that then my will is that my grandson Thomas Goodwyn shall possess the land and negroes, he and his heirs forever. Source: [Genealogies of Virginia Families from the William and Mary College Quarterly. Vol. II. Cobb-Hay](#), The Goodwin Families in America, Page 725.

Mercy James Q. Since the Nuclear Power Plant is in chaos and closing, will the cemeteries on the site be available for the researchers to eventually get to and catalog? Another question is either of those on the plant property African American Cemeteries? My husband (whose family on mothers and fathers sides are from Fairfield County) and I have visited the following cemeteries where relatives are buried in Fairfield County - Owens, Rock Hill AME, Mt. Moriah, Lebanon Presbyterian, White Hall, Cedar Creek Baptist and White Oak Baptist Cemeteries and an unknown cemetery in Alston, SC (those are the ones we know of). On another note, we are fascinated by Camp Welfare, and were wondering if there is information about the original owners of the small houses in the camp. My understanding is that they were passed down through families. That is the only brush camp we know of in Fairfield County.

A. The Pearson and Mayo Family Cemeteries (both attached) are the only two that we are aware of that you still have to obtain permission to visit. Generally, someone with the Nuclear Power Plant will guide you there and back. All of the other graves/tombstones that would have been under the lake have been moved to one of the following cemeteries: Shiloh Methodist; Monticello Methodist; Little River Baptist;

and Salem Presbyterian. These church cemeteries have been photographed by our FCGS Cemetery Committee and put on FindAGrave.com. African American Cemeteries on Nuclear Power Plant property are not known at this time. Bertha Boulware Gladden still owns a small house at Camp Welfare and may be able to give you more information on Camp Welfare. Pelham is going to answer you about your additional questions and has Bertha's contact information.

Roxana Williams Q. I've just about given up on Thomas Willard until more people do DNA, but I was shocked to find another great-great?? grand-father who was born in Fairfield County, South Carolina. James Rowe was born 1802 in Kentucky; died in 1898, Fairfield Co, SC. His son, Edward Rowe, born 1827 Fairfield Co., SC, died 1910 in Oklahoma. Are you familiar with that surname? Do you have any records of where Edward might be buried? Also found my husband's great-great grandmother being born in Fairfield County! Lucinda Margaret Hiser.

A. Here is what we were able to find about the Rowe Families in our records. James Rowe left a will dated January 9, 1839 Children: Jane – married a Smith, John, David, William, Joseph, Patsey married a Peay, Lewis, Doctor Kerney, Henford McKinney, Mansell, Harriott Millesey. David Rowe left a will dated October 7, 1930 Heirs: Anna – wife – married a Griffin after David's death Children: Mahala – deceased – wife of David Rowe, Jr., Osmond, David Jackson, George Washington, Green Harrison, Thomas LaFayette, John, Sally – wife of Jesse Tidwell, Jemima – wife of Joseph Rowe, Rose, Jenny, Secney. From Fairfield County Equity Court Records the additional info on the above families. James' daughter Jane married Robert W. Smith and Patsy married George C. Peay. David died on February 20, 1837, Sally D. married Jesse Tidwell, Mahala had died and was the wife of David Rowe, Jr. who was living in Georgia, Osmund died on September 9, 1842, Green Harrison died on November 2, 1836, John died on August 26, 1842, Jemima married Joseph Rowe, Seceny died on October 20, 1842. Here is a list of old Rowe tombstones we know about in the county. Buried at the First Methodist Church Cemetery in Winnsboro Caroline Rowe – died August 15, 1890 at 70, wife of Mansel Rowe, Mansel Rowe – died November 14, 1891 at 88, husband of Caroline Rowe, Buried at Mt. Olivet Presbyterian Church Cemetery Jane C. Johnston – January 30, 1836-May 16. 1921 – wife of William Thomas Rowe, John Washington Rowe – died September 10, 1864 at 6 years, 3 months and 10 days – son of William and Jane C. Rowe, Margaret Rosannah Rowe – died September 6, 1864 at 8 years, 1 months and 12 days – daughter of William and Jane C. Rowe, Sarah Elizabeth Rowe – died July 9, 1864 at 10 months and 26 days – daughter of William T. and Jane C. Rowe, William Thomas Rowe – died October 6, 1893 at 37 years and 24 days, The only Edward Rowe that we found is an Ed Rowe – 1888-1992 – buried in Old Sawney's Creek Baptist Church Cemetery. There are several Rowe's buried in this cemetery but they all died in the middle to late 1900's. There are two Rowe's buried in New Sawney's Creek Baptist Church Cemetery, however they died in the 2000's. I did find an Edward Row who died on April 12, 1910 and is buried in Tecemseh Cemetery in Tecumseh, Oklahoma. This could be your Edward and they spelled his name Row. I did not find any info on James, who was born in Kentucky or on his son Edward in our Fairfield County records.

Linda Young Q. I am John Daniel Yongue. My Father was Henry Lee Yongue. My grandfather was Neil Malone Yongue. They are buried in Fort Lawn, SC. We never knew much more than my great-great grandfather was John Lee Yongue and his wife was Annie Elizabeth Goza Yongue. Recently, through ancestry.com, we have discovered that John Lee Yongue is buried in Evergreen Cemetery in Chester. (I have not seen the tombstones, but have seen pictures) Having said all that, my problem is trying to "see" the tombstones of prior descendants. The genealogy I have seen and assume is correct is as follows: Hugh Yongue I was born in Belfast Ireland and married Agnes Sittlington. At some time they were in Larne, Antrim County, Ireland. Eventually, they died and were buried in Augusta County, Virginia. They had Hugh Yongue II in Larne, Ireland on 1 March 1732. Hugh Yongue II married Margaret Campbell in Ireland and moved circa 1770 to Fairfield or Chester County. They are buried in the "Yongue Graveyard" that is supposed to be near Woodward in Fairfield County, SC. They had James Yongue in

Larne, Ireland in 1757. After they moved to Fairfield County, he married Agnes Mae Lee of Granville NC (?) in 1780. James died 7 Dec 1796 Agnes remarried and moved to Tennessee. (No burial site for James.) They had at least 4 children, one of whom was James Yongue Jr born 1793 in Blackstock, SC. James Yongue Jr and his consort Elsie Ford had 10 children. One of whom was John N Yongue. (N may be for Neil.) James Jr and Elsie are supposed to be buried in the Yongue Graveyard, Woodward, Fairfield County, SC. John N Yongue was born in 1812 and married Savilla Price. John N died in 1860. No burial site noted. They had 8 Children, one of whom was John Lee Yongue who married Annie Elizabeth Goza. I would love to know where my ancestors are buried. I am hoping you know much more about the "Yongue Graveyard". I found a reference to a Yongue Grave yard just off Wagers Road in Chester County near Blackstock. It was a very small grave yard with only 5 - 10 graves and only 3 -4 grave stones. All seem to be some of the children of James Yongue Jr. I saw the graves of Sarah Yongue and Dr William B (P?) Yongue. Any info you have about these and other grave sites would be greatly appreciated. I plan to visit and see who of mine is buried in Evergreen in Chester and may go back to rub the stones I saw off Wagers Road. Until recently the only fact I knew was that my grandfather was Neil Malone Yongue and Sally Bertha Kirkpatrick was my Grandmother. I know a lot about all my Kirkpatricks and that my great grandfather was John Lee Yongue and my great grandmother was Anne Goza Yongue and they are buried in Evergreen Cemetery in Chester. I have attached a Word document explaining other things I believe are correct that I recently learned through Ancestry.Com. This is my starting point. I have seen the cemetery in Chester County on Wagers Road that should be the Cemetery for James Yongue Sr. I was unable to find the gravestone shown in Find My Grave.Com.

Word Document Attached: Dear Yongue's Jean is a member of ancestry.com. She was recently notified that there were some census records she might want to look at. From those records she has ascertained and provided me with the following info. First, I want to caution all that this is our interpretations of the census records. Also, the census takers wrote in cursive that can be hard to read and they each recorded the info differently and in different order. And of course, sometimes they liked 'YOUNG, YOUNGUE OR YONGUE". Having added all the caveats, this is what we learned.

Hugh Yongue was born 1 March 1732 in the town of Larne, Antrim County, Ireland. This town is NNE of Belfast, Northern Ireland. I know nothing about his heritage or parents. Hugh Yongue married Margaret Campbell. Margaret Campbell was born in Antrim County sometime in 1733. They had at least one child whose name was James Yongue who was born in 1757. Census records say that he was born in County Antrim, Ireland. This family shows up in Fairfield county sometime in 1760-1780. Hugh Yongue died 13 Feb 1805, Margaret died in 1778.

James Yongue was born in 1757 in Larne, Antrim County, Ireland. He married Agnes Mae Lee in 1780. Agnes was born in 1762 in Granville, NC(?). Agnes was the daughter of John Lee. James and Agnes had at least four children. James died 7 Dec 1796 and Agnes remarried, died in either Oct 1827 or Nov 1831. Gravestone says Nov 1831. Other records show the 1827 date. Agnes also had children with her second husband for Tennessee.

The children of James and Agnes:

Mary Jane (Polly) Yongue born in 1780 in Chester county. Died in 1847 or 1850 in Gibson, TN

John Lee Yongue was born 6 Mar 1787 in Fairfield County, SC. John Lee died 15 June 1861 in Fairfield Co, Woodward.

James Yongue Jr was born in 1793 and died in 1866, buried in the Yongue Graveyard.

Elizabeth Yongue had unknown birth or death dates.

James Yongue Jr was born in 1793 in Blackstock and had a consort named Elsey Ford. (Married ???)

Elsie Ford was born in 1795. They had 10 children. James Jr died in 1866 and Elsey Ford died 23 Feb 1852. Both are buried in Yongue Graveyard, Woodward, Fairfield County, SC

The Children of James Jr and Elsie:

John N Yongue was born in 1812 and died in 1860

Jesse W Yongue was born 1 Feb 1813 and died 12 Mar 1816 Probably James W. Yongue Dec 1815 – 12 Mar 1816

Osmond Yongue was born 13 Oct 1821 and died 19 Aug 1857

Sarah Yongue was born 1823 and died 24 Dec 1845

James Lee Yongue was born 1825 and died 13 Jun 1854

Agnes J Yongue was born in 1827 and died unknown

William P Yongue was born 1829 and died 5 Sept 1857

Nancy Yongue was born 1n 1830 and died 12 Jul 1859

Martha Ann was born in 1838 and died unknown

Mary Acina was born 1838 and died 27 May 1926 in Robstown, Nueces County, TX

John N Yongue was born in 1812. He married Savilla Price. Savilla was born 20 Aug 1812, the daughter of William Price (Born:1789, Died 1833). John N and Savilla had eight children, John N died 1860 and no death date is known for Savilla. (N = Neil ????)

The children of John N and Savilla

John Lee Yongue was born 10 Oct 1837 and died 8 Oct 1900

William P Yongue was born 1839 death unknown

Mary Yongue was born 1846 death unknown

Louisa J Yongue was born 1848 death unknown

Jefferson Yongue was born 1850 death unknown (This is maybe 29 Dec 1851 – 25 May 1908)

Osmond Yongue was born 1853 death unknown

Sarah Yongue was born 1857 death unknown

Henry Yongue was born 1859 death unknown (This is probably Henry Coleman Yongue 03 Feb 1859 – 06 August 1884)

John Lee Yongue was born 10 Oct 1837 and married Annie Elizabeth Goza. Annie E Goza was born 16 Apr 1845 and was the daughter of John Michael (Born: 17 Mar 1802, died 13 Mar 1855) and Margaret Susannah Walker. Annie was one of 3 children: Robert Goza born 1842, John Goza born 1840, Annie E Goza born 1845). John Lee and Annie E had 8 children. John L died 8 Oct 1900 and Annie died 11 Nov 1911.

Children of John Lee and Annie Elizabeth Yongue

Letha Lee 26 Nov 1866 – 15 May 1937

Lucy – 29 Mar 1864 – 09 Nov 1889

Mattie W

L.G. – Lillie Goza Yongue 02 Jan 1871 – 31 Dec 1887

A.P.

C.C. – Charles Clarence Yongue – 13 Aug 1875 – 01 Oct 1952

P.G. – Paul G. Yongue 11 Dec 1878 – 24 Dec 1938. Married Susan M. Yongue

Neil Malone

Observations: Our ancestors seem to be all from the Blackstock, Woodward area of Fairfield County. I hope that aunt Nancy and I can locate graves and get details of Birth, Death and location of graves.

Our ancestors repeated the name of their ancestors. That is why I believe John N was John Neil. We know that Henry Lee, Neil Malone, Hattie Elizabeth, Letha Louise, James Neil, Paul Gladney, John Kirkpatrick and James Neil are all repeats of our ancestors.

Q. Can you please tell me where the “James Yongue” Cemetery is? Is it the one on Wagers road in Chester County? **A.** Yes

A. Here are locations of Yongue Graves that we have been able to document.

James Yongue – died on December 7, 1796 is buried in the James Yongue Cemetery.

Agness Yongue Delashmet – died November 10, 1827, wife of James Yongue and later married Elijah Delashmet, she is buried in the James Yongue Cemetery, is on the same stone as James.

Elsey Yongue – died February 23, 1852, consort of James Yongue in buried in the James Yongue Cemetery. We did not find a stone for James.

Also buried in the James Yongue Cemetery are:

James W. Yongue – died in 1816 at 3 years and 1 month

Sarah Yongue – died on December 24, 1849 at 26, daughter of James Yongue

Dr. Wm. B. Yongue – died on September 5, 1852 at 24

Zephaniah W. Yongue – infant son of James Yongue, unable to read dates

Nancy Grissom – died July 17, 1850 as 29, no relationship noted

Sarah C. Grissom – died January 22, 1853 at 2, no relationship noted

There are some old Yongue graves in several other locations:

Concord Presbyterian Church:

C. D. Yongue – died January 6, 1876 at 49 years and 6 months

H. W. Yongue – died August 20, 1866 at 46 years

Harriet M. Yongue – March 5, 1833-March 15, 1848-daughter of John L. & Margaret Yongue

John C. C. Yongue – born August 3, 1830-died January 30, 1960-son of John L. & Margaret Yongue

John L. Yongue – March 7, 1787-June 16, 1861

John L. Yongue – died January 2, 1880 at 35 years, 10 months and 11 days

Margaret Yongue – died March 7, 1851 at 60, consort of John L. Yongue

Yongue Cemetery:

Chaney Isabella Yongue – March 17, 1846-December 5, 1848-daughter of Wm. M. & Savilla E. Yongue

Robert Lee Yongue – February 14, 1845-December 5, 1848-son of Wm. M. & Savilla E. Yongue

Henry C. Yongue – February 3, 1859-August 6, 1884-son of Wm. M. & Savilla E. Yongue

Hester H. Yongue – December 5, 1800-June 23, 1852

Malisha J. Yongue – March 8, 1833-April 17, 1858

Martha Linn Yongue – April 25, 1836-November 20, 1836-daughter of Robert & Hester H. Yongue

Pierce M. Butler Yongue – February 23, 1854-September 30, 1856-son of Wm. M. & Savilla E. Yongue

Robert Yongue – 1780-June 30, 1848

Savilla E. Yongue – August 20, 1825-January 19, 1877-wife of W. M. Yongue

Wm. M. Yongue – died May 23, 1884 at 59 years, 8 months and 12 days-husband of Savilla E. Yongue

Salem Presbyterian Church:

Andrew Yongue – 1815-1867-husband of Nancy

Andrew E. Yongue – 1821-1825-son of J. W. & F. Yongue

Andrew L. Yongue – died November 17, 1859 at 31 years, 5 months and 5 days

Clara Maria Yongue – 1856-1857-daughter of J. W. & F. Yongue

Daisy Yongue – died June 18, 1885 at 1 year, 3 months and 13 days-daughter of J. M. & L. C. Yongue

Frances Cornelia Yongue – 1830-1899-wife of Jas. W. Yongue

James R. Yongue – 1853-1880

James Walter Yongue – March 22, 1818-December 26, 1876

John L. Yongue – 1863-1867-son of J. W. & F. Yongue

Julia Yongue – 1790-1874-wife of Martin Yongue

Martin Yongue – 1784-1867

Mary Laura Yongue – 1860-1862

Nancy Crosby Yongue – 1818-1895-wife of Andrew Yongue

Nancy Malinda Yongue – died 1847-daughter of J. W. & F. Yongue

Robert G. C. Yongue – 1856-1859-son of Andrew and Nancy Yongue

Walter Crosby Yongue – January 6, 1866-December 4, 1885-son of Jas. W. & F. C. Young

William C. Yongue – 1839-1885-son of Andrew & Nancy Yongue

Jane Young – October 14, 1825-June 2, 1898

Broom Cemetery

Jane Amey Broom Yongue – died December 24, 1848 at 24 years, 8 months and 10 days-consort of J. W. Yongue

Bethel ARP Church

Thomas Leslie Yongue – March 2, 1831-February 15, 1858-born near Mount Hamilton, County Antrim, Ireland and died in Winnsboro, server in Co. G. of the Palmetto Regiment

Jackson Creek Presbyterian Church

Osmon W. Yongue – October 13, 1826-August 19, 1857

Samuel Whorter Yongue – died November 8, 1830 at 67-native of Maryland

William Yongue Cemetery – we have not been able to locate this cemetery.

Elizabeth Lamey Yongue – died January 19, 1844 at 42-wife of William Yongue

William Yongue – 1765-1842-son of Samuel & Sarah Ann Martin Yongue

Gene Ziervogel Q. Do you have a list of Department of Mental Health death and/or burial records? I am looking for Odom's that may have died in the state Department of Mental Health Hospital.

A. Yes, we have an MSWord and a PDF version of a listing of the Department of Mental Health Hospital death and burial records. Below are the Odom's listed.

Last Name	First	Middle	Date of Death	Cemetery	Grave #	County of Birth	Gender	Race	Cause of Death 1	Age at Death
Odom	Dixiana		15-Nov-1914	Elmwood or Canal		Darlington	Female	White	Pellagra	
Odom	Della		23-Aug-1920	Geiger Street	576		Female	White		
Odom	Bettie		26-May-1937	Geiger Street	1110		Female	White		
Odom	Mary	Nicy	13-Jun-1967	Morris Village	2076		Female			
Odom	Howley		03-14-1898	Elmwood or Canal			Male	White	Senile Exhaustion	
Odum	M.	A.	3-Dec-1910	Elmwood or Canal			Female	White	Pneumonia	

The full PDF version is on our Members Only Pages.

Stephan Wallace Q. I'm looking for information on the family and ancestors of **Thomas Ira Cook**, who was born in Fairfield District, South Carolina, sometime between 1791 and 1794 (based on information in the federal census records). He is listed in the 1820 and 1830 census records for Fairfield District, South Carolina as Thomas I. Cook, although later transcriptions wrote the middle initial as J rather than I. Thomas and his brother **Burrell B. Cook** signed a petition dated October 24, 1824 seeking incorporation and financial aid on behalf of the Fairfield Broad River Academy (Fitz Hugh McMaster, *History of Fairfield County, South Carolina*, p. 64). The legislature granted the request for incorporation and the act names both Cook brothers among the initial Trustees of the Fairfield Broad River Academy (David J. McCord (ed.), *The Statutes at Large of South Carolina*, Volume 8. Acts Relating to Corporations, p. 336). Sometime after 1830, Thomas Cook moved to Troup County, Georgia, where he is listed in the 1840 census as a resident of District 655 (LaGrange). Thomas I. Cook also is listed as Troup County Inferior Court Judge for the period 1837-1841 (Georgia Genealogy-HISTORY OF THE COURTS OF TROUP COUNTY GEORGIA, <https://georgiagenealogy.org/troup/courts.htm>). I have been unable to find any information on Thomas Cook after 1841, including his date and place of death. According to John Bennett Boddie's *Southside Virginia Families*, Vol. I, Thomas Ira Cook was the son of **Burwell "Burrell" Cook**, who came to Fairfield District with his father **John Cook(e)** from Brunswick County, Virginia. Boddie also claims that Thomas' mother was Mary Pope, daughter of Solomon Pope of Edgefield County, South Carolina. However, another source states that Solomon Pope's daughter Mary was the wife of Nathan Cook (George Leland Summer, *Newberry County, South Carolina: Historical and*

Genealogical Annals, 1950, p. 265) so I'm not sure which is correct. Thomas' father Burrell Cook died in Fairfield District, South Carolina sometime between 1800 and 1803. After his death, Thomas and his brother Burrell B. Cook appeared in court 16 November 1803 and voluntarily chose their uncles **Nathaniel Cook** and **George McCrellis** as guardians. Thomas Ira Cook married **Harriett Rabb**, daughter of **Robert Rabb** and **Nancy Ann (Woodward) Rabb** of Fairview District, South Carolina. I have been unable to find birth or death dates for Harriett Rabb. She and Thomas witnessed the will of her father Robert Rabb, which was proved 13 February 1816 (the transcription lists the names as Thomas J. Cook and Marriet Cook, but the original is clearly signed Harriett). Thomas and Harriett (Rabb) Cook had at least three children: **Burrell B. Cook**, b. about 1828 in Fairfield District, South Carolina, d. unknown. He appears in the 1850 Federal Census for Troup County, Georgia as an overseer on the estate of Mrs. Nancy Swanner and her sons Nathan and James Swanner. In 1857, he was named as one of 12 firefighters chartered by the General Assembly of Georgia for LaGrange and organized under the name "The Diligent Firemen" (LaGrange, Troup County Georgia History, https://georgiagenealogy.org/troup/lagrange_history.htm). He enlisted as 3rd Sergeant in Company B, Georgia 4th Infantry Regiment in April 1861 and was mustered out in July 1862 (Ancestry - U.S., Civil War Soldier Records and Profiles, 1861-1865). **Mary Cook**, b. 6 February 1829 in Fairfield District, South Carolina, d. 10 March 1868 in Perry County, Alabama. Married Stanhope Lamar Wallace 12 December 1848 in Perry County, Alabama. Their children were named Burrell M, Margaret Caroline, Harriet Rabb, and George. **Harriett Cook**, b. abt 1835 in either South Carolina or Georgia, d. 23 November 1896 in Perry County, Alabama. Married 1. John Lee 5 March 1855 in Perry County, Alabama. 2. John Harris Johnson 25 March 1875 in Perry County, Alabama. Thomas' daughters Mary and Harriett Cook moved from LaGrange, Georgia to Perry County, Alabama sometime in the 1840s, possibly with their mother, whose sister **Martha (Rabb) Goree**, wife of James Lyles Goree of Newberry District, South Carolina, had moved to Perry County with her husband sometime before 1820. The Gorees' daughter, Mary Ann Goree, married Andrew Barry Moore, who later became the 16th Governor of Alabama. James L. Goree owned property in west Perry County adjacent to lands owned by the Wallace and Lee families. Information I am seeking: 1. Information about Thomas Ira Cook, his brother Burrell B. Cook, and their parents and grandparents in Fairfield County. 2. Information about Thomas' wife Harriett Rabb, in particular her birth and death dates and her father Robert Rabb's parents. 3. Information about Thomas and Burrell's court-appointed guardians Nathaniel Cook and George McCrellis. 4. The identities of the N. Cook, T. Cook, and R. Rabb who appear on the 1820 map of Fairfield District surveyed by John Allen Tharp and published in Mills Atlas 1825 (the Cooks are in the southwest near present-day Jenkinsville, between the Broad and Little Rivers; R. Rabb also is in the southwest, but closer to the center of the District, between Mill Creek and Morris' Creek). I would greatly appreciate any information you may have on file and hope that some of the information I have provided on this family may be useful to others.

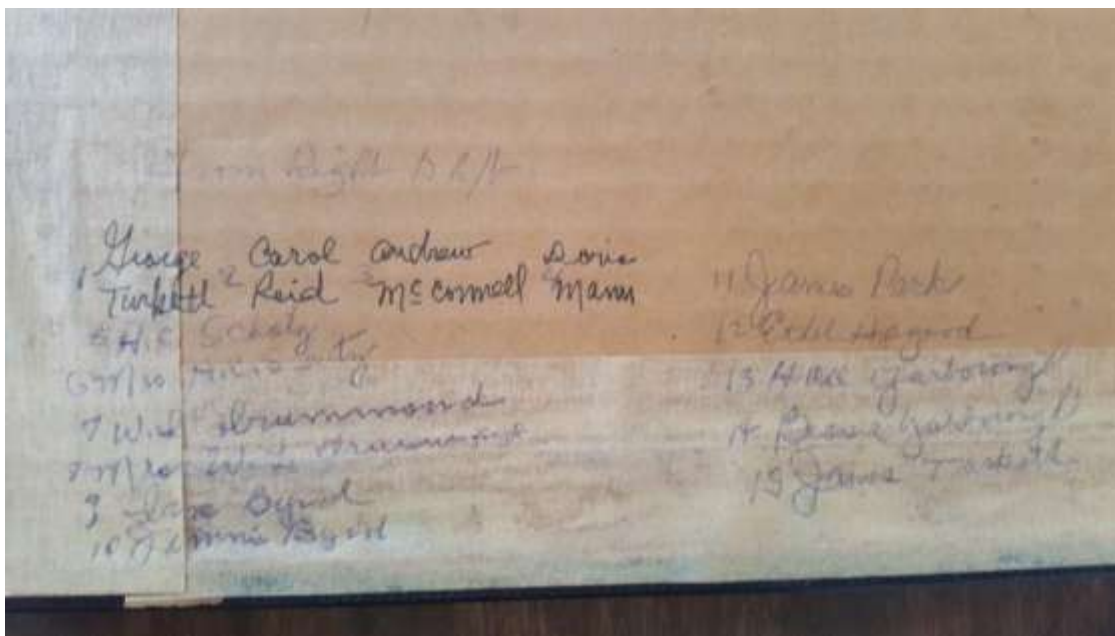
A. Question # 1 See the info below on what we found about Thomas and Burrell's parents. Question # 2 We have not been able to find Harriet's birth and death date, one source says that she was born about 1790. Possible parents for Robert are: based on Equity Court Records: in Bill 1826 # 3: a William Rabb had died, his wife was Elizabeth and it lists the following sons-Robert, Alexander and Charles. Question # 3 From the info found in the family files, it appears that Nathaniel Cook and George McCrellis were their uncles. Burrell's sister Elizabeth married George. Question # 4 This would only be a guess, N. Cook is probably Nathaniel Cook, T. Cook would be Thomas and I did not come across a Cook with the first name that states with a R. This is some info from the family files: This is from a copy of a family bible: Burrell Brown Cook married Mary Honoria Kirkland in October 1818. Burrell B. Cook was born on November 15, 1794, son of John Cook and Mary Pope, she was the daughter of Solomon Pope. Mary Honoria Cook was born February 24, 1800, she was the daughter of William Kirkland and Lucretia Pearson. William Thomas Cook was born on October 24, 1819, son of Burrell Brown and Mary Honoria

Cook. John Wylie Cook was born on October 3, 1821 and died in 1894, son of Burrell and Mary Honoria Cook. Mary Elizabeth Cook was born on February 4 and died October 1824, daughter of Burrell and Mary Honoria Cook. Frances Harriett Cook was born on July 19, 1826, daughter of Burrell and Mary Honoria Cook. Joseph Kirkland Cook was born on November 3, 1828, son of Burrell and Mary Honoria Cook. Nathan Milton Cook was born on September 13, 1830, son of Burrell and Mary Honoria Cook. Martha Kirkland Cook was born on December 12, 1832, daughter of Burrell and Mary Honoria Cook. James Alston Cook was born on June 3, 1835, son of Burrell and Mary Honoria Cook. Rebecca Susanah Cook was born on August 11, 1838, daughter of Burrell and Mary Honoria Cook. Emma Honoria Cook was born on June 7, 1842, daughter of Burrell and Mary Honoria Cook. Emma Honoria Cook Kirkland died on August 3, 1916, buried beside her husband J. Murray Kirkland in the Monticello Methodist Church. William Thomas Cook died on October 12, 1820 James Alston Cook died on October 5, 1862 in Virginia from wounds received at the Battle of Manassas. Burrell B. Cook died on March 29, 1872. M. Honoria Cook died on May 20, 1883 F. H. Cook died on August 2, 1895. In the family files found some research papers that has the following, is written on Family Group Sheets, cannot verify. Capt. John Cook was born in Virginia, son of Henry and Elizabeth Cook. His first wife was Mary Brown and his second wife was Martha Pearson. They had the following children: Nathaniel – born in 1760 and died in 1848-married (1) Susannah E. Pope (2) Christina Chappell Elizabeth who married George McCrelles Mary who married Thomas Hutchinson Burrell who married Mary Pope A daughter who married a Grendist A daughter who married a Bellamy A daughter who married John Harbert A daughter who married a Battle John, Henry, Isaac, Phillip, Burrell Cook married Mary Pope Children: Burrell Brown Cook, married Mary Honoria Kirkland Thomas Ira Cook Nathan P. Cook Here is a list of the location of where some early Cooks are buried. Buried in Shiloh Methodist Church in Jenkinsville – these graves were moved there when Lake Monticello was constructed. John Cook – 1730-1700-South Carolina, Captain, Lt. Col. Goodwyn's Bn., Rev. War. Martha Cook – November 7, 1754-1796-wife of Capt. John Cook Burrell Cooke – 1760-1800-South Carolina, Pvt., Ross' Regt., Rev. War Cook #1 Cemetery B. B. Cook – November 15, 1794-March 29, 1872 Fannie H. Cook – July 19, 1826-August 1895 J. K. Cook – November 3, 1828-October 8, 1897 Jas. Alston Cook – June 3, 1935 at 27 years, 4 months and 2 days-died of wounds received at the Battle of Manassas, Va. Martha P. Hutcherson Cook – May 6, 1824-January 17, 1892-wife of J. K. Cook Mary H. Cook – died May 20, 1883 at 83 years and 3 months-wife of Burrell B. Cook Cook #2 Cemetery-none of the stones have dates on them. Mary Cook, N. H. Cook, Nancy Cook, S. E. Cook, Sarah R. Cook, Susannah E, Cook, Susannah Cook, Ths. H. Cook Cook # 3 Cemetery – only a single grave William Thos. Cook – died October 12, 1820 at 11 months and 19 days-son of Burrell B. and Mary Honoria Cook Bethel Methodist Church Phillip D. Cook – 1800-1872-1st Sgt. Cav. Bn., Holcombe's S. C. Legion, CSA Emma M, Cook – September 2, 1845-January 13, 1913 Infant Son – June 12, 1880-June 14, 1880-son of W. A. & E. M. Cook James L. Cook – February 5, 1875-February 8, 1875-son of W. A. & E. M. Cook John M. R. Cook – April 6, 1876-July 8, 1876-son of W. A. & E. M. Cook Nathan R. Cook – July 22, 1877-May 23, 1906-husband of Mary A. Cook William A. Cook – August 22, 1849-April 24, 1910 Here is some info found in Equity Court Records: Emma M. Cook married Capt. John M. Kirkland on November 25, 1868, she was the youngest daughter of B. B. Cook – in December 9, 1868 issue of the paper. In Equity Court Record Bill 1848 #15 – Esther Cook was the wife of Nathan M. Cook, he died on June 7. 1847, and was the mother of M. H., Julia and Henry Cook. In Equity Court Records, Petition 1853 #1 – J. Lawrence Cook, died in February 1852, married Rebecca Ashford, she died in November 1852. They were the parents of Susannah E. Cook-born about 1846, Martha M. Cook-born about 1848 and William A. Cook-born about 1850. In Equity Court Record Bill 1827 #6 and Bill 1850 #9 – Jemima A. Williamson Cook, she was the daughter of Roland & Ailcey Williamson, she married Philip Cook, and was the mother of Lucy A. Cook, Susanna P. Cook and Sally Cook. In Equity Court Record Petitions 1822 #1, 1822 #9 and 1823 #5 – John P. Cook, married Mary Willingham Cook who died in July 1821, father of John W. Cook. In Equity Court Record Petition 1856 #6 – John P. Cook married Sarah S.

Owens, the widow of Jesse Owens who died in July 1850. From his obit - John R. Cook died on October 18, 1885 in Marshallville, Ga. at the age of 65, he married Mrs. Harmon in 1847, she died in 1851, he then married Mrs. Sarah S. Owens, the daughter of Osmund Woodward. From Equity Court Record Bill 1857 #21 – he married Sarah on December 18, 1854 who was the widow of Jesse T. Owens. In Equity Court Record Bill 1855 #3 – Martha Matilda Cook was the daughter of James Lawrence and Rebecca Ashford Cook and granddaughter of Nathan Cook who died on August 7, 1854, she was the sister of Susannah E. Cook and William A. Cook and the niece of Joel W. Ashford. In Equity Court Record Bill 1845 #30 – Mary Kennedy Cook was the daughter of William & Polly Kennedy and married Thomas Cook.

YEARBOOKS of FAIRFIELD COUNTY, SC
Lawrence H. Ulmer

1937 Jenkinsville High School Trip to Mt. Vernon, Virginia



As future years come and go, I hope this recording of old Yearbooks will prove a source of happy memories for us, our parents, and all who have had a part in helping make these Yearbooks a reality.

During the process of recording, the information was entered into a Microsoft Excel 2016 Spreadsheet and the Spell checker was used many times to check for keying errors. After entering the data, the spreadsheet was printed and manually rechecked for spelling and omission errors. Just in case I missed one, please let me know.

To view pictures of the Schools in Fairfield County during 1935 - 1950 which are in the South Carolina Archives & History Database, go to the Fairfield County Genealogy website.

NOTE: All books are Searchable. To search hit Ctrl/F and enter information in the Find Box

This is a work in process. The following yearbooks are needed:

Greenbrier High need all except 1952; Jenkinsville High need all except 1956 thru 1960; McCrorey-Liston High need all except 1981 and 1983; Monticello High need 1934 thru 1948, 1953 thru 1955; Richard Winn Academy no longer need any; Ridgeway High need 1953, 1954 and 1955; Winnsboro High 1965, 1966, 1967, 1970, 1971, 1978 thru 1985, 1987 thru 1991

The Fairfield County Genealogy Society is located on the second floor of the Fairfield County Museum. If you have yearbooks that we can borrow to digitize, please let us know. These will be digitized and returned to you as soon as possible.

Old Schools in Fairfield County and nearby surrounding counties:

Rosenwald History in 1912 Julius Rosenwald gave Booker T. Washington permission to use some of the money he had donated to the Tuskegee Institute for the construction of six small schools in rural Alabama, which were constructed and opened in 1913 and 1914. Rosenwald was pleased with the results so he agreed to fund a larger program for schoolhouse construction based at Tuskegee. The program ended in 1932, producing 4,977 new schools, 217 teachers' homes, and 163 shop buildings constructed at a total cost of \$28,408,520 to serve 663,615 students in 883 counties of 15 states. **Rosenwald Schools in Fairfield County** had a total of 10 Rosenwald Schools: Centerville School; Nazareth School; New Hope School; New Zion School; Rock Hill School; Shiloh School; St. Peters School; Sweet Prospect School; White Hall School; Winnsboro School (Fairfield County Colored Training School).

Other Schools in Fairfield County:

Aimwell School (Stover); Bethel School (Rion); Bethlehem School (Winnsboro); Black Jack School (Rion); Broad River School (Blair); Calvary School (Winnsboro Mills); Elizabeth School (Blair); Everett (Winnsboro Mills); Fairview School (Rion); Feasterville Male & Female Academy (Carlisle SE, around 1840 an academy was established at this site by John Feaster, a noted landowner of this area, for the education of female and male students. By 1842, both academy building and a boarding house (dormitory) had been erected. Mr. Feaster, appointed as trustees his sons, Andrew, Jacob, and John M. Feaster.); Gethsemane School (Salem Crossroads); Gladden Grove School (Stover); Greenbrier School (Winnsboro Mills); Gritts School (Winnsboro); Hessian Hill (Salem Crossroads); Hope Station (Carlisle SE); Langford School (Irmo NE); Leitner Grove School (Richtex); Mathis School (Jenkinsville); Mitford School (Great Falls); Monticello High School (Salem Crossroads); Mount Olive School (Carlisle SE); Mount Olivet School (Winnsboro); Mount Pilgrim School (Carlisle SE); Mount Visit School (Salem Crossroads); Mount Zion College (Winnsboro); Mount Zion Institute (Winnsboro); Mount Zion School (Rion); New Zion School (Flint Hill); Oak Grove School (Ridgeway); Piney Grove School (Flint Hill); Piney Grove School (Irmo NE); Purity School (Carlisle SE); Rock Creek School (Salem Crossroads); Saint Barnabas (Jenkinsville); Saint Holiness (Jenkinsville); Saint John School (Winnsboro); Saint Mark School (Winnsboro Mills); Saint Matthews School (Winnsboro); Shady Grove School (Lebanon); Thorn School (Liberty Hill); Thorntree School (Longtown); Turner School (Longtown); Union School (Rion); Wallaceville School (Richtex); White Oak School (Flint Hill); Winnsboro High School (Winnsboro Mills); Woodward School (Black Stock).

**RULES FOR 1915
SCHOOLTEACHERS**

Truly, the life-style of a schoolteacher has changed radically in the last 50 or 60 years. For example, a 1915 teachers' magazine listed the following rules of conduct for teachers of that day:

- You will not marry during the term of your contract.
- You are not to keep company with men.
- You must be home between the hours of 8 p.m. and 6 a.m. unless attending a school function.
- You may not loiter downtown in any of the ice cream stores.
- You may not travel beyond the city limits unless you have the permission of the chairman of the board.
- You may not ride in a carriage or automobile with any man unless he is your father or brother.
- You may not smoke cigarettes.
- You may not dress in bright colors.
- You may under no circumstances dye your hair.
- You must wear at least two petticoats.
- Your dresses must not be any shorter than two inches above your ankle.
- To keep the schoolroom neat and clean, you must: sweep the floor at least once daily; scrub the floor at least once a week with hot, soapy water; clean the blackboards at least once a day; and start the fire at 7 a.m. so the room will be warm by 8 a.m. Thomas R. McDaniel

Conferences, Workshops, Seminars, Informational Website Links

[Announcements](#) & [Past Announcements](#), [Conferences & Workshops](#), [REUNIONS](#)

Let us know about your Family Association and/or Family Reunion, we will be glad to post your association and/or reunion information for you on our web site. **Don't forget to put on your calendar the Christmas Gala (Open House), Sunday, December 2, 3:00pm-6:00pm at the Fairfield County Museum, Jointly sponsored by the Fairfield County Genealogy Society Fairfield County Historical Society & Museum and the Winnsboro Garden Club.**

Welcome new and renewal members since last publication.

MEMBERS AND THEIR SURNAMES

This list is not all inclusive. If you do not see your name or if the surnames for you need to be revised, please contact us so we can update our records. Please let us know if you would like to correspond with one of our members. Thanks! Names in blue are new members.

LIFETIME MEMBERS

Alston	Lloyd	
Blackwell	Gloria Douglas	Bell, Bigham, Brown, Carson, Chappell, Coleman, Crosby, Gladney, Grier, Henry, Mills, McMaster, Montgomery, Pritchett, Rabb, Shedd, Watson, Wilkes
Coleman	Susan	Buchanan, Coleman, Meador/Meadow, McGraw, Moberly, Yongue
Cooper	Dorothy T.	Timms, Young, Yongue
Delleney, Jr.	F.G. (Greg)	Delleney, Nelson, Woodward
Scott	Dix	
Haywood	Frances Owens	Boyce, Brown, Cranford, Dillard, Duncan, Epps, Owens, Prather, Quiller, Raiford, Ray, Turner
Hill, Jr.	Robert Ray	Hill, Woodward
Hollis	John	Dowey, Hollis, Hood, Watts
Hollis	Mary Ann	Bundrick, Closson, Cooper, Corbitt, Cromer, Halfacre, Hentz, Hoover, Ladd, Lake, Lauderdale, Lemmon, Owings, Sligh, Wicker
Hopper	William D. (Bill)	Mayben/Maybin, Mobley
Hunter	William C.	Ferguson, Henderson, Hunter
Killian, Jr.	Robert Edward "Eddie"	Coleman, Chapman, Fox, Killian, Lyles, Mabry, Mathis, Mobley, Perry, Poole, Rainey, Roe, Taylor
Lowry, III	John & Tracy	Lowry, Strong
Lyles	James	Lyles
Mallory	Lauren	
McCormac	Mary C.	
McKinstry	Jimmy Leroy	Alston, Bonner, Boyd, McKinstry, Mobley, Taliferro
Means, Jr.	Robert T.	Means
Pope	Natalie	Adams, Boycl, Carroll, Lippard, Morrison, Pope, Porter
Shelton	Kenneth A.	
Turbyfill	Sue	Byerly, Duncan, Dunkin, Loaner, Loner

Vinnacombe	Mary S.	Bundrick, Closson, Cromer, Halfacre, Hentz, Ladd, Lake, Lauderdale, Lemmon, Owings, Sligh, Wicker
White	Russell S.	
Williams	Otis & Carmen	Knight, Parrao, Williams
Ziervogel	Gene T.	Douglass, Hicklin, Tidwell

BENEFACTOR MEMBERS

Susan Dickson - \$100.00 donation given in honor of John and Kay Hollis, Chapin, SC

Dickson	Susan	Dickson, Hollis
Sung	Carolyn Hoover	Aiken, Ford, Gibson, Wylie
Tupper	Carolyn	Ashford, Bookman, Chappell, Goodwyn, Hamiter, Hendrix, Lever, Smith, Souter
Wiggins	Carolyn (Gladney) Powell	Gladney, Harvey, Martin, Neely, Roseborough, Young

PATRON MEMBERS

Nancy B. Callaway - \$50.00 donation given in honor & memory of "The Buchanans of Fairfield County"

Baird	Paula Hamiter	Alston, Boss, Edwards, Fields, Hamiter, Harrington, Hamblen, Kenemore, Lake, McKinstry, Reavis, Rebsamen, Turnipseed
Callaway	Nancy B.	Callaway, Buchanan
Krull	Janice	
Rabb	Michael	
Wallace	Stephan	

FAMILY MEMBERS

Banton	Susan	Anderson, Douglass, Gibson
Bassett	John & Patricia Jean	
Branham	Wallace	Branham, Christiansen, Christiansun, Parker, Smith, Marthers, Medlin
Brymer	Gene & Rosalind	
Clarke	Mimi	
Culpepper	Susan	Glazier, Long, Mason, Yarbrough
Discher	Michelle Lamb	
Donohoe	Monica Crosby	Butler, Crosby, Donohoe, Janes, Kent, Knowles, Mancil, Nelson, Ryals
Drake	Robert D. & Patricia K.	Drake, Lyles, Watson, Wishon
Hobby	Gwen	Anderson, Blackmon, McCullough, Sexton
Howell	Steve & Yvonne	Howell
James	Johnny C. & Mercy L.	Adams, Guinyard, James, Martin, Lakin
Kinard	David W. & Glenna	Winn, Cason, Coleman, Feaster, Grisson, Lewis, McCants, Porter
Laird	Donnie R. & Pamela D.	DeLoach, Kennedy
Long, II	William H.	
McCully	James	Dickey, McCully, McCullough, McCammon

Misenheimer, III	John Ferguson	Blalock, Ferguson, Fink, Haves, Havs, Henderson, Hough, Misenheimer
Morgan	Mary F.	Arledge, Bell, Colston, Featherston (e), Ginn, Hancock, Riley, Shumate, Stroud
Morton	Jeff & Marena	Anderson, Dominey, Robinson, Raines, Roberts, Stephenson
Oliver	Mary Anne	Allen, Bolick, Burley, Clowney, Cooper, Crawford, Hogan, Lemon, Martin, Sprat, Stevenson, Weir
O'Neill	Stephen	
Polk	Sandra	Barkley, Rosser
Price, Jr	James J.	
Ray	Jefferie L.	Beamguard, Eatman, Edmonds, Harvey, McCullough, Stephenson, Thompson
Robinson	Dean	Shed/Shedd
Rosborough	Dr. Edna Marie	Banks, Bell, Craig, Crosby, Cubit, Douglas, Hudson, Kennedy, McMeekin, Neil, Rabb, Rosborough, Shedd
Shaw	James L.	Haynes, Miller, Shaw
Stutts	Cathy	
Truitt	David & Paula	Cooper, Fite, Floyd, Ford, Garner, High, Holland, Irvin, Jordan, Matthews, Miller, Pevy, Pope, Robinson, Roper, Truitt
Turner	Jesse "Mac"	Beam, Blanton, Carter, Earl, Etters, Hardin, Irvin, Linder, Lipscomb, Posey, Pruett, Rives, Sealy, Turner
Womack	Linda Eaker	
Yongue	John	

INDIVIDUAL MEMBERS

Abraham	Anes Wiley	Erby/Irby, Lyles, Peay, Vanfield
Aiken	Paige	Aiken
Aragon	Damien	Colvin, Conway, Cornwell, Crosby, Davis, Juggers, Hitchcock
Branham	Vikki	Branham, Smith, Martin, Watts, Lail, Kelly, McDowell
Brown	Nancy L.	Blackmon (Kershaw), Eichelberger, Henderson, Irby, Kincaid, Lyles, McDonald, McMorries, Moseley (Kershaw), Stewart (Lancaster Co.), Summer, Watt
Burleson	Earl & Caroline Jeffers	
Burns	Max	
Carter	Gloria	
Clark	Ellen B.	Boulware, Coleman, Mobley, Stevenson, Traylor
Cole	Curtis	Davis, Mason, Pipkin, Tuttle, Wirick
Collier	George	Burney, Martin, Milling, Montgomery, Rogers, Thompson
Colon	Lashawna Neal	
Cornish	Sharon	Ballard, Thomas
Cothran	Clifton V.	Cothran, Gillespie, McNeer, Pearson
Cousar	Sanita Savage	Chisholm, Coleman, Feaster
Davis	Jonathan E.	Boyd, Brown, King, McDill, McGraw, Powell, Roberts, Starnes

Davis	Ken	Tolliver
DeLacretaz	Cheryl	Douglas, Ederington, Hollingsworth, McGraw, Miles, O'Neal, Powell, Stearns
Dietel	Elizabeth N.	Irwin (Ervin), Whitaker
Dixon	Martha E.	Bailey, Brasington, Buckner, Caldwell, Coleman, Collins, Crosby, Cunningham, Dancy, Davis, DeLashmette, DeRull, Dixon, Douglas, Dye, Gaddish, Gibson, Grayson, Heath, Jackson, Lee, Lifrage, Mabrey, McCross, McDonald, McMeekin, Middleton, Mobley, Moore, Poole, Pritchard, Robertson, Sterling, Stover, Tapley, Thomas, Thorn, Waggoner, Williams, Williamson, Woodward, Wyche
Duke	Julius Z.	Crossland, Dunlap, Richardson, Simpson
Duncan	Keith	
Evans	Arthur	
Finley	Alyce R.	Bell, Hamilton, Nason, Montgomery, Reynolds, Scott
Floyd	Margaret	Cureton, Ladd, Yongue
Ford	David	Belton, Chalk, English, Ford, Jourdan, Mickle, Page, Peay, Stark, Tinman
Frazier	Linda	Clark, Frazier, Hayes, Meeks, Sellers
Garland	Audrey A.	Anderson, Cloud, Dye, Ford, Gaither, Gladden, Keistler, Nichols, Robinson
Gibson	Terrica M.	Adams, Aldrich/Aldredge/Aldridge/Alfred/Alredge/Arledge Bishop, Boulware, Clark, Davis, Dibble, Easter, Gibson, Hines, Jenkins, Richardson, Rolfe, Squirewell, Tankersley, Tarrent/Tarrant, Tidwell, Tilles/Tills/Tolle
Giebner	Green H.	
Glenn	Mary Martin	Allen, Cooper, Glenn, Martin
Godsey	Glenda	
Green, III	James W	Terminal Y-SNP Broom R-Z16245, Powell, R-BY2744, Coleman G-CTS11352, Roe, Robinson/Robertson R-YP1211 Banks/Marjoribanks R-A5616, Ragsdale R-Z8, Cameron, Green R-S16701. Mathis I-L205. Surnames: Brown, Powell, Coleman, Banks, Marjoribanks, Ragsdale, Roe, Robinson/Robertson, Cameron
Gregory	Ray G.	Adams, Gregory, Hawks, Hunter, Miller, Ledford, Vaughn, Welch
Grinnell	Linda	
Hall	Jack	
Hall, Jr	Joe W.	
Heath	Heather Hennessee	Albert, Bass, Bowen, Branham, Dove, Hennessee, Marthers, Rabon, Wilson
Hesler	Julia Palmer	
Hodges	Richard B.	Hodges
Howell-Osborne	Ruthie	Erby/Irby, Lyles, Moore/Harris, Peay, Vanfield
Hoy	Nancy	

Hutson	Karen M.	James Dolan Brown
Irvin	Faye Kennedy	Alexander, Kennedy and associated families
Johnson	Suzanne P.	
Jolly	Frances R.	Boney, Hood, Loner, Neeley, Raines, Reid
Joyner	Herbert Eugene	Collins, Hollis, Joyner
Killian	Patrick "Rick" Lee	Coleman, Chapman, Fox, Killian, Lyles, Mabry, Mathis, Mobley, Perry, Poole, Rainey, Roe, Taylor
Kinsler	Brenda K.	Kinsler, Howard, Crowell, Adams, Stevenson, Leightner
Lance	Austin	Casper Culp, John Lentz, Peter Lentz, Thomas Lentz
Leathers	Clara	Boyd, Mack, Taylor
Luffman	Betty Carol	
Lutz	Paulette Kelly	Brewer, Huntley, Robert James Kelly, Watts
Maass	Vicki L.	Maass, Vanderstett
Maechtle	Greydon P.	
Mattern	Lisa H.	
Matthews	Gregory W.	Bradford, Cameron, Hutchison, Lemmon, Matthews
Matthews	R. Wayne	Bradford, Cameron, Hutchison, Matthews
McCorvey	Ann Dale McCorvey	Ford, Hall, McCormick, Ragsdale
McLane	Susan Lyles	Blackmon (Kershaw), DeLoach, Eichelberger, Henderson, Irby, Kincaid, Lyles, McDonald, McLane, McMorries, Moseley (Kershaw), Peay, Stewart (Lancaster Co.), Summer, Watt, Valentine
Milligan	Stephen L.	Baird, Bell, Bolt, Hamilton, McCreight, Paul, Robinson
Moreland	Claudette	
Nuckolls	Stephen W.	Carson, Durphy/Dufphey, Gamble
Nunnally	Terry	Cameron, Doster, Lewis, Robinson, Stewart, Wages
Oldenetel	Leslie	
O'Neal	Frances L.	Beam, Lee, Mickle, Roof (Ruff), Pitman, Pittman, Pitmon
Payne	Karen M.	
Peake	Pinkey D.	Bolin, Dickey, Drew, Earnhardt, Jenkins, Morgan, Spence, Wright
Peays	Ben	
Popplewell	Cathrine	
Porter	L. Virgil	Carter, Cox, Killingsworth, Peake, Sawyers, Shumpert, Smith, Turbeville, Walker
Price	Cindy	Gladney, Gregg
Price-Woods	Janie	Davis, Garner, Price, Woods
Roberts	William F.	
Roe	Chuck	
Sandow	William	Busby, Decker, Flory, Henry, Jack, Kemp, McKean, Minnick Sandow
Schafer	Virginia	
Sears	Randy P.	Curry, Miller, Boyd, Wallace, Tennant, Young, Peay, Bankhead, McGarity, Roddey, Love, McWatters, Cameron, Stephenson, Wages, Jourdan, Smith, Carroll, Hall, Farmer,

		Roach, Helms, Soloman, Stewart, Houghpaugh, Burgess
Sexton	Sarah	Minton, Timms
Shoultes	Terrell W.	
Smith	Marion C.	Carter, Marthers, Smith, Walker
Taylor	Diahn	Ford, Gradic, Jones, Leitner, Sampson Taylor
Teall	Martha	
Ulmer	Lawrence H.	
Verret	Daniel	Rhodes, Rhodus, Simmons, Tarver, Tyler
Walker	Diane	Boyd (Susan Lowry, d of William Lowry and Agnes Strong), Walker, Lowery, Mann, Manning, Gwin
Walker	Blaine	
Ward	Jon P.	Cloud, Crumpton, Hogan, Parker, Price Walker, Wilson
Williams	JoAnn	Broome, Edwards
Williams	Roxana	Newman, Powell, Williams
Williams	Susan G.	
Winn	David	
Winn	Wesley	Atwood, Wesley, Winn
Wright	Shirley	Wright

SUBSCRIPTION MEMBERS

Allen County Public Library	
Cary Area Library	
Commache Public Library	
Crawford County Public Library	
Fairfax Regional Library	
Seattle Genealogical Society Library	
Warren-Trumbull County Library	
Western Kentucky University Library	Kentucky Library Research Collections Kentucky Building
York County Library	

Registered in BookCat New Acquisitions/Deletions to/from Library Collection

Book Author Donation(s)

O'Levia Neil Wilson Wiese

The Woodville Republican (Volumes 1-7)
Cemetery Records of Greene County, Alabama and
Related Areas (The Journal of Mrs. Mary Marshall)
A.F. Carl Wiese Descendants

Compiled by O'Levia Neil Wilson Wiese
Edited by O'Levia Neil Wilson Wiese

Wiese, O'Levia Neil Wilson

Library Re-home Program Deletion(s)

We have been asked by our book contributors to re-home any duplicate books we have to an area historical or genealogical resource library.

The following books have been re-homed (donated) to the Blythewood Historical Society Research Library:

Columbia & Richland County
Historic Camden Volume I

Moore, John Hammond
Kirkland & Kennedy

Union County Heritage	Union County Heritage Committee
Chester County, S.C. History	Chester County Heritage History Committee
Tombstone Records of Chester County, South Carolina	Crowder, Louise Kelly Vicinity Volume I
The Revolutionary Soldiers of Catholic Presbyterian Church	Chester County Historical Committee
Kershaw County Legacy	Kershaw County Historical Society
A Driving Tour of Historic Marion County	Marion County Museum
Kershaw County, S C Cemetery Survey Volumes I-3	Kershaw County Historical Society
Newberry County South Carolina Cemeteries Vol I & 2	The Dutch Fork Chapter of SC Genealogical Society
Marion County	Marion County Historical Society
A Walking Tour of Historic Chester, SC	Chester County Historical Society
York County Marriages 1770-1869 Implied York County	Langdon, Barbara R.
S.C. Probate Records	
Edgefield County Marriages 1769-1880 Implied in	Langdon, Barbara R.
Edgefield County, S.C. Probate Records	
Cemetery Records of Greene County Alabama and	Wiese, O'Levia Neil Wilson
Related Areas (The Journal of Mrs. Mary Marshall)	

For our records, please attach to the application your pedigree chart and share any information you have updated on your family lines. The information will be filed and made available in our family files. This will aide future requests for research and assist walk-in researchers.

Our membership year runs from January 1, current year, until December 31, current year; i.e. calendar year. New members (after October 1 of current year) will have membership until December 31, the following year. If dues have not been paid by March 31, current year, you will no longer receive membership benefits.

We are a 501-C3 non-profit organization. All donations will be acknowledged and will be tax deductible.

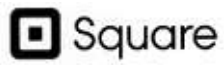
If you would like to give your support monetarily in helping us meet our mission, there are several ways: Send a check to FCGS, PO Box 93, Winnsboro, SC 29180-0093; or donate online by way of our [Square Online Store](#). Some other areas of support are contributions to the Resource & Research Library Collection: Any Family Information, Family Books or Scrapbooks. **We appreciate your support!**

We would like to welcome you and share with you some of the benefits of being a member. They include the following with no extra charges:

- Society Quarterly newsletters
- Correspondence about upcoming events of interest
- Priority assistance with your email queries in finding your ancestors
- Free research of your queries during membership year (non-members \$15 / request)
- Priority assistance with in-library access to Fairfield County research materials
- Free copies (non-members \$.10 / copy)
- Monthly workshops held throughout the year
- Queries published in the newsletters
- 10% discount on books and published materials
- In-library access to Ancestry, Black Ancestry, Family Tree, Fold 3, Genealogy Bank and other organizations
- Contact with people who share our interests in genealogy and history
- Members Only Website information
- Support for your society activities and projects
- Members & Children, Grandchildren & Guardians of Members are eligible for FCGS Scholarship Award

***** NEW MEMBERSHIP OR MEMBERSHIP RENEWAL *****

Please note that if you choose to receive newsletters by USPS vs. email, that the rate is \$25.00/year. Your dues and gift donations are tax deductible public charity contributions.



If viewing online, [click here](#) to pay dues and make donations online.



For Information
Fairfield County Genealogy Society
Federal Employer Identification Number: 47-2246425
Public Charity Status: 170(b) (1) (A) (vi)
Contribution Deductible: Yes



For ALL of your support this past year!

From all of the [BOARD OF DIRECTORS, OFFICERS AND SUPPORT PERSONNEL](#) to ALL of you!



2018 MEMBERSHIP APPLICATION NEW () / RENEWAL ()

NEW MEMBER: Please fill out membership information below / RENEWAL: Please make any updates below

HIS/HER NAME: _____ (NAME + SURNAME(S) Published in Newsletter) OK to
Give for Inquiries ↓

ADDRESS: _____ Yes / No

CITY: _____ Yes / No

STATE: _____ ZIP _____ Yes / No

PHONE: _____ Yes / No

HIS/HER EMAIL: _____ Yes / No

MEMBERSHIP DUES AND DESIGNATIONS

INDIVIDUAL () \$20.00 Color Newsletter Emailed only

INDIVIDUAL+USPS () \$25.00 Color Newsletter Emailed () B/W Newsletter mailed USPS () Both ()

FAMILY () \$25.00 Color Newsletter Emailed () B/W Newsletter mailed USPS () Both ()

PATRON () \$50.00 Color Newsletter Emailed () B/W Newsletter mailed USPS () Both ()

BENEFACTOR () \$100.00 Color Newsletter Emailed () B/W Newsletter mailed USPS () Both ()

LIFE TIME () \$300.00 Color Newsletter Emailed () B/W Newsletter mailed USPS () Both ()

SUBSCRIPTION () \$15.00 Organizations or Libraries (Color Newsletter Emailed only)

SCHOLARSHIP () \$_____ Toward Annual FCGS College/Tech School Scholarship Award

DONATION () \$_____ Society is a 501-3(c) and all donations qualify as charitable gifts

TOTAL CONTRIBUTION \$_____ Thank you for your membership and support for (y)our society!

PATRON / BENEFACTOR / LIFE TIME (MEMORIAL/HONORARIUM/PROJECT/SCHOLARSHIP ANCESTOR DESIGNATION)

() MEMORIAL () HONORARIUM () PROJECT () SCHOLARSHIP:

SURNAMES OR SURNAMES YOU ARE PLANNING TO RESEARCH AND/OR QUERY

Type of Research Interested: African () - American Indian () - European () - Other ()

SURNAME(S): _____

QUERY: _____

If viewing online, [click here](#), to pay dues and donations online.
 Mail Application and/or Check to:
 FCGS or Fairfield County Genealogy Society
 P.O. Box 93, Winnsboro, SC 29180-0093
 Email: fairfieldgenealogy@truvista.net

For our records, please attach to the application your pedigree chart and share any information you have updated on your family lines. The information will be filed and made available in our family files. This will aid future requests for research and assist walk-in researchers.
 Website: www.fairfieldgenealogysociety.org

**2018 MEMBERSHIP APPLICATION NEW () /
RENEWAL, 27**

Adrill Duncan, 16
 Agnes J Yongue, 20
 Agnes Mae Lee, 19
 Agnes Sittlington, 18
 Agness Yongue Delashmet, 20
 Alester G. Furman, 4
 Andrew Barry Moore, 23
 Andrew E. Yongue, 21
 Andrew L. Yongue, 21
 Andrew Yongue, 21
 Ann Peoples, 7
 Anne Goza Yongue, 19
 Annie E Goza, 20
 Annie Elizabeth Goza, 20
 Annie Elizabeth Goza Yongue, 18
 Annie L. Robinson, 8
 Annie Laurie Robinson, 9
 B. B. Cook, 24
BENEFACTOR MEMBERS, 27
 Bertha Boulware Gladden, 18
 Blaine Walker, 16
 Bobby Brown, 7
 Book Author Donation(s), 27
 Boyd Tennant, 11
 Bratton Williams, 11
BRYAN GREER, 1, 8
 Brymer Associates, LLC Thank you, 1
 Buford S. Chappell, M.D., 16
 Burrel Cooke, 24
 Burrell B. Cook, 22
 Burrell Brown, 23
 Burrell Brown Cook, 23
 Butch Holohan, 11
C A. ROBINSON, 9
 C. A. Robinson, 9, 10
 C. A. Robinsons, 9
 C. C. Garrison, 11
 C. D. Yongue, 21
 Capt. John Cook, 24
 Capt. John M. Kirkland, 24
 Caroline Rowe, 18
 Cathcart, Andrew "Gilly", 10

Celia (Evans) Mabry, 7
 Celia Mabry, 7
 Cemetery committee report, 1
 Cemetery Committee Report, 13
 Chaney Isabella Yongue, 21
 Charles A. Robinson Jr, 10
 Charles Alexander Robinson Jr, 9
 Charles Alexander Robinson Sr, 8
 Charles Clarence Yongue, 20
 Charles Maybury, 7
 Charles Robinson, 11
 Charles Robinson, Jr., 11
CHARLIE ROBINSON, 8
 Christina Chappell Elizabeth, 24
 Clara Maria Yongue, 21
 Conferences, Workshops, Seminars,
 Informational Website Links, 1, 27
CONTACT INFORMATION, 3
 Daisy Yongue, 21
 David Doe, 14
 David J. McCord, 22
 David Jackson, 18
 David Rowe, 18
 David Rowe, Jr., 18
 Decater Duncan, 16
 Diahn Taylor, 15
 Doctor Kerney, 18
 Dolly Clack, 7
 Dr William B (P?) Yongue, 19
 Dr. Hooper, 4
 Dr. William Robinson, 8
 Dr. Wm. B. Yongue, 21
 Dutch Tennant, 11
 E. G. Dotterer, 11
 Ed Rowe, 18
 Edward Row, 18
 Edward Rowe, 18
 Elijah Delashmet, 20
 Elisha Hill, 16
 Elizabeth Grimbball, 12
 Elizabeth Lamey Yongue, 22
 Elizabeth Maybury, 7
 Elizabeth Paine, 7
 Elsey Ford, 19

- Elsey Yongue, 21
 Elsie Ford, 19
 Emma Honoria Cook, 24
 Emma M, Cook, 24
 Emma M. Cook, 24
 Ephraim and Frances (Green) Parham, 8
 Esther Cook, 24
 FAMILY MEMBERS, 27
 Fannie H. Cook, 24
 Fitz Hugh McMaster, 4, 22
 Ford family, 15
 Frances Parham, 8
 Frances Cornelia Yongue, 21
 Frances Harriett Cook, 24
 Francis Maybury, 7
 Frank Strother, 11
 Furman Institute Structural Components, 4
 Gary Finklea Finklea, 11
 Gene Ziervogel, 22
 George C. Peay, 18
 George Leland Summer, 22
 George Maybury, 7
 George McCrelles, 24
 George McCrellis, 23
 George Washington, 18
 Green Harrison, 18
 H. A. Tupper, 4
 H. T. Cook, 4
 H. W. Yongue, 21
 Harriet Davis, 4
 Harriet M. Yongue, 21
 Harriett Cook, 23
 Harriett Rabb, 23
 Harriott Millesey, 18
 Harvey, Stewart, 10
 Henford McKinney, 18
 Henry C. Yongue, 21
 Henry Coleman Yongue, 20
 Henry Lee Yongue, 18
 Henry Yongue, 20
 Herman Mattox, 4
 Hester H. Yongue, 21
 Hinchaw Maybury, 7
 Hinchia Mabry, 7
 Hinchia Mabry, Jr., 7
 History of the Brown-Hawthorne House, 1, 4
 Hugh Milling, 14
 Hugh Yongue, 19
 Hugh Yongue I, 18
 Hugh Yongue II, 18
 INDEX, 1
 INDIVIDUAL MEMBERS, 27
 INFORMATION ABOUT CHARLIE ROBINSON, 1
 Information about Hinchia Mabry, 1
 its Furman Institute Structural Components, 1
 Iva Rebecca Robinson, 9
 J. K. Cook, 24
 J. Lawrence Cook, 24
 J. Murray Kirkland, 24
 J. S. Dill, 4
 James Alston Cook, 24
 James Clement Furman, 4
 James Hawthorne, 5
 James L. Cook, 24
 James L. Goree, 23
 James Lee Yongue, 20
 James Lyles Goree, 23
 James Parham, 8
 James R. Yongue, 21
 James Rowe, 18
 James Swanner, 23
 James W. Yongue, 21
 James Walter Yongue, 21
 James Yongue, 18, 19, 20, 21
 James Yongue Jr, 19
 James Yongue Jr., 19
 Jane Amey Broom Yongue, 22
 Jane C. Johnston, 18
 Jane C. Rowe, 18
 Jane Young, 21
 Jas. Alston Cook, 24
 Jefferson Yongue, 20
 Jemima A. Williamson, 24
 Jesse Owens, 25
 Jesse Tidwell, 18
 Jesse W Yongue, 20

Joel Mabry, 7
John and Francis West, 7
John and Hinshaw Guillian, 7
John and Margery Guillian, 7
John Bennett Boddie, 22
John Black, 15
John C. C. Yongue, 21
John Cook, 24
John Cook(e), 22
John Daniel Yongue, 18
John Davis, 13
John Goza, 20
John Harbert, 24
John Harris Johnson, 23
John L. Yongue, 21
John Lee, 19, 23
John Lee Yongue, 18, 19, 20
John M. R. Cook, 24
John Macon, 17
John Michael Goza, 20
John N Yongue, 19, 20
John P. Cook, 24
John R. Shurley, 5
John W. Cook, 24
John Washington Rowe, 18
John William Robinson, 8
John Wylie Cook, 24
Jon davis, 1
Jonathan E. Davis, 16
Joseph Kirkland Cook, 24
Joseph Reese, 4
Joseph Rowe, 18
Judith Maybury, 7
Julia P. Hesler, 17
Julia Yongue, 21
Keith Duncan, 16
Killian Eddie, 2
Larry Ulmer, 1
Lawrence H. Ulmer, 25
Leslie Cheu, 16
Lewis Green, 8
Library Re-home Program Deletion(s), 27
LIFETIME MEMBERS, 27
Lillie Goza Yongue, 20
Linda Young, 18
Louisa J Yongue, 20
Louisa Loughlin "Loulie" Ashford, 8
Loulie Loughlin Robinson, 9
Lucinda Margaret Hiser, 18
Lucretia Pearson, 23
Lucy A. Cook, 24
Malisha J. Yongue, 21
Mansel Rowe, 18
Margaret Campbell, 18, 19
Margaret Rosannah Rowe, 18
Margaret Susannah Walker, 20
Margaret Yongue, 21
Martha (Rabb) Goree, 23
Martha Ann, 20
Martha Cook, 24
Martha Kirkland Cook, 24
Martha Linn Yongue, 21
Martha M. Cook, 24
Martha Matilda Cook, 25
Martha P. Hutcherson Cook, 24
Martha Pearson, 24
Martin Yongue, 21
Mary Acina, 20
Mary Ann Goree, 23
Mary Brown, 24
Mary Cook, 23, 24
Mary Elizabeth Cook, 24
Mary F. Advill Hill, 16
Mary Fox, 7
Mary H. Cook, 24
Mary Honoria, 23
Mary Honoria Kirkland, 23
Mary Jane (Polly) Yongue, 19
Mary Kennedy Cook, 25
Mary Laura Yongue, 21
Mary Pope, 22
Mary Willingham Cook, 24
Mary Yongue, 20
Matthew Parham, 8
Member Newsletter Submission, 7
MEMBERS AND THEIR SURNAMERS, 1, 27
MEMBERSHIP APPLICATION, 1
Membership Query / Answer, 1, 15
MEMBERSHIP RENEWAL, 1
Mercy James, 17

Message From The President, 1, 2	Phyllis Mobley, 14
Mission Statement, 1	Pierce M. Butler Yongue, 21
MISSION STATEMENT, 3	Rebecca Ashford, 24
Mrs. Anne Courtney, 7	Rebecca Elizabeth Watt, 8
Mrs. Elizabeth Hawthorne Wilkes, 7	Rebecca Susanah Cook, 24
Mrs. Harmon, 25	Registered in BookCat New Acquisitions to Library Collection, 27
Mrs. Nancy Swanner, 23	REGISTERED IN BOOKCAT NEW ACQUISITIONS/DELETIONS TO/FROM LIBRARY COLLECTION, 1
Mrs. Pleasants, 7	Rev W. E. Walters, 8
MT. ZION ALUM CHARLIE ROBINSON BEATS GAMECOCKS, 8	Rev. Charles Alexander Robinson III, 12
N. H. Cook, 24	Rev. J. S. McGinnis, 4
Nancy Ann (Woodward) Rabb, 23	Rev. Jonathan Davis, 4, 5
Nancy B. Callaway, 27	Reverend Eli Alston Wilkes, Jr, 6
Nancy Cook, 24	Richard Furman, 4
Nancy Crosby Yongue, 21	Richard Hill, 7
Nancy Grissom, 21	Robert "Eddie" Edward Killian, Jr., 2
Nancy Jane Robinson, 8	Robert Brown, 5, 7
Nancy Malinda Yongue, 21	Robert G. C. Yongue, 21
Nancy Yongue, 20	Robert Goza, 20
Nathan Cook, 22	Robert H. Duncan, 16
Nathan M. Cook, 24	Robert Hill, 17
Nathan Milton Cook, 24	Robert Lee Yongue, 21
Nathan P. Cook, 24	Robert Rabb, 23
Nathan R. Cook, 24	Robert W. Smith, 18
Nathaniel Cook, 23	Robert Yongue, 21
Nathaniel Evans, 7	Robinson, John L., 12
<u>Neil Malone</u>, 20	Robinson, Jr., Charles A., 8
Neil Malone Yongue, 18, 19	Robinson, William A., 12
NEW MEMBERSHIP OR MEMBERSHIP RENEWAL, 27	Roland & Ailcey Williamson, 24
Nicholas Hodges, 4	Roxana Williams, 1, 7, 18
O'Levia Neil Wilson Wiese, 27	Rufus H. Duncan, 16
Odom, 22	Ruth Matilda Robinson, 9
Osmon W. Yongue, 22	S. E. Cook, 24
Osmond Yongue, 20	Sally Bertha Kirkpatrick, 19
Osmund Woodward, 25	Sally Cook, 24
Pat Harmon, 11	Samuel Whorter Yongue, 22
PATRON MEMBERS, 27	Sarah Ann Martin Yongue, 22
Paul G. Yongue, 20	Sarah C. Grissom, 21
Pearson and Mayo Family, 17	Sarah Elizabeth Rowe, 18
Perry C. Duncan, 16	Sarah R. Cook, 24
Peter Green, 8	Sarah S. Owens, 25
Philip Cook, 24	Sarah Yongue, 19, 20, 21
Philip Mulkey, 4	Savilla E. Yongue, 21
Phillip D. Cook, 24	

Savilla Price, 19, 20	Vinro K. Robinson, 8
Solomon Pope, 22	Volunteers always needed, 1, 3
Stanhope Lamar Wallace, 23	W. E. Bailey, 4
Stephan Wallace, 22	W. J. McGlothlin, 4
Stonewall I B. Wertz, 11	Walter Crosby Yongue, 21
Strobie Kincaid Robinson, 9	Warren K. Robinson, 8
SUBSCRIPTION MEMBERS, 27	Weir family, 16
Susan Dickson, 27	William & Polly Kennedy, 25
Susan M. Yongue, 20	William A. Cook, 24
Susanna P. Cook, 24	William Ashford Robinson, 9
Susannah Cook, 24	William Bevan, 7
Susannah E, Cook, 24	William C. Yongue, 21
Susannah E. Cook, 24	William Cathcart, Everts, 4
Susannah E. Pope, 24	William Davis, 4
TABLE OF CONTENTS, 1	William Evans, 7
Tennant, Boyd Dutch, 10	William Kirkland, 23
Thomas Cook, 25	William P Yongue, 20
Thomas Goodwyn, 17	William Price, 20
Thomas Hutchinson Burrell, 24	William Rabb, 23
Thomas Ira Cook, 22, 24	William Thomas Rowe, 18
Thomas LaFayette, 18	William Thos. Cook, 24
Thomas Leslie Yongue, 22	William Turner, 17
Thomas W. Macon, 17	William Yongue, 22
Thomas Willard, 18	Wm. M. Yongue, 21
Ths. H. Cook, 24	YEARBOOKS of FAIRFIELD COUNTY, SC, 25
Thurmon, J. Strom, 12	Zephaniah W. Yongue, 21